

# Review Article: Towards Strongly-coupled Ensemble Data Assimilation with Additional Improvements from Machine Learning

Eugenia Kalnay<sup>1,2</sup>, Travis Sluka<sup>3</sup>, Takuma Yoshida<sup>4</sup>, Cheng Da<sup>5,6</sup>, and Safa Mote<sup>1,2</sup>

5 <sup>1</sup> Department of Atmospheric and Oceanic Science, University of Maryland, College Park, College Park, Maryland

<sup>2</sup> Institute for Physical Science and Technology, University of Maryland, College Park, College Park, Maryland

<sup>3</sup> Joint Center for Satellite Data Assimilation, University Corporation for Atmospheric Research, Boulder, Colorado

<sup>4</sup> Numerical Prediction Development Center, Japan Meteorological Agency, Japan

<sup>5</sup> Earth System Science Interdisciplinary Center, University of Maryland, College Park, College Park, Maryland

10 <sup>6</sup> Global Modeling and Assimilation Office, [Goddard Space Flight Center](#), Greenbelt, Maryland

Correspondence to: Eugenia Kalnay ([ekalnay@umd.edu](mailto:ekalnay@umd.edu)), Cheng Da ([cda@umd.edu](mailto:cda@umd.edu)), Safa Mote ([ssm@umd.edu](mailto:ssm@umd.edu))

Deleted: NASA

Deleted: (GMAO)

**Abstract.** We assessed different coupled data assimilation strategies with a hierarchy of coupled models, ranging from a simple coupled Lorenz model to the state-of-the-art coupled general circulation model CFSv2. With the coupled Lorenz model, we assessed the analysis accuracy by strongly-coupled Ensemble Kalman Filter (EnKF) and 4D-Variational (4D-Var) methods with varying assimilation window lengths. The analysis accuracy of the strongly-coupled EnKF with a short assimilation window is comparable to that of 4D-Var with a long assimilation window. For 4D-Var, the strongly-coupled approach with the coupled model produces more accurate ocean analysis than the ECCO-like approach using the uncoupled ocean model. Experiments with the coupled quasi-geostrophic model conclude that the strongly-coupled approach outperforms the weakly-coupled and uncoupled approaches for both the full-rank EnKF and 4D-Var, with the strongly-coupled EnKF and 4D-Var showing a similar level of accuracy higher than other coupled data assimilation approaches such as the outer loop coupling. A strongly-coupled EnKF software framework is developed and applied to the intermediate-complexity coupled model SPEEDY-NEMO and the state-of-the-art operational coupled model CFSv2. Experiments assimilating synthetic or real atmospheric observations into the ocean through strongly-coupled EnKF show that the strongly-coupled approach improves the analysis of the atmosphere and upper ocean, but degrades observation fits in the deep ocean, probably due to the unreliable error correlation estimated by a small ensemble. The correlation-cutoff method is developed to reduce the unreliable error correlations between physically irrelevant model states and observations. Experiments with the coupled Lorenz model demonstrate that strongly-coupled EnKF informed by the correlation-cutoff method produces more accurate coupled analyses than the weakly-coupled and plain strongly-coupled EnKF regardless of the ensemble size. To extend the correlation-cutoff method to operational coupled models, a neural network approach is proposed to systematically acquire the observation localization functions for all pairs between the model state and

observation types. The following strongly-coupled EnKF experiments with an intermediate-complexity coupled model show promising results with this method.

35

## 1 Introduction

Coupled data assimilation (CDA) has drawn tremendous attention recently among the weather and climate modeling community [Penny et al., 2017]. It has been recognized as one of the most active research areas for data assimilation from now to the future [Carrassi et al., 2018]. Among the many benefits of exploring CDA [Penny et al., 2017, Penny and Hamill, 2017; Zhang et al., 2020], one primary motivation is the need to initialize the coupled models with the coupled analyses. Many operational centers have plans to make seamless weather–climate prediction using coupled general circulation models [CGCM, Palmer et al., 2008; Hoskins, 2013], of which initialization requires analyses of different earth components (e.g., atmosphere, ocean, land, and ice). Different CDA strategies have been developed and summarized in Penny et al. [2017]. Past studies [Mulholland et al., 2015] show that the *uncoupled data assimilation (UCDA)* approach, which obtains independent analyses of different Earth system components based on the forecasts from uncoupled models, fails to produce balanced and physically consistent coupled analyses. The forecasts initialized from these uncoupled analyses suffer from severe initialization shocks. Zhang et al. [2007] adopted the *weakly coupled data assimilation (WCDA)* approach by creating separate analyses of the atmosphere and oceans, assimilating their domain observations based on the forecasts initialized from a coupled model. They found that the WCDA approach could produce balanced coupled analyses that correctly reconstruct the variability and trends of the ocean in the 20th century. Through experiments with an intermediate-complexity atmosphere–ocean coupled model and a state-of-the-art coupled model, Sluka et al. [2016; 2018] found that the *strongly-coupled data assimilation (SCDA)* approach, which creates coupled analyses by assimilating the same set of the all-domain observations into different Earth system components, outperforms the WCDA approach in terms of the analysis accuracy and observation departures.

55 Given the benefits of CDA, most operational centers are transitioning from UCDA to CDA [Penny and Hamill, 2017]. The National Center for Environmental Prediction (NCEP) pioneered producing the coupled analyses using a WCDA system that integrates the CGCM Climate Forecast System [CFS, Saha et al., 2006, 2010] and generates separate 3D-Var analyses for the atmosphere and oceans. Sugiura et al. [2008] implemented the full adjoint of a coupled general circulation model and used it to develop a 4D-Var SCDA system, with the initial ocean states and the bulk adjustment factors of surface 60 fluxes as its analyzed variables. This approach is superior to the WCDA approach since it can directly update the coupled states with cross-domain observations through the backward integration of the adjoint for the fully-coupled model. However, this approach has not been widely adopted due to the technical challenge of developing and maintaining the adjoint of a CGCM. Instead, most operational centers producing variational analyses adopted the WCDA approach, allowing them to reuse their existing separate atmosphere and ocean analysis systems [Lea et al., 2015; Browne et al., 2019]. The European

65 Centre for Medium-Range Weather Forecasts (ECMWF) implemented the “outer loop coupling”, where the incremental 4D-  
Var atmospheric and 3D-Var with the First Guess at the Appropriate Time (3D-FGAT, Lee et al., [2004]; Lawless [2010])  
oceanic analyses share the same outer loops so that their updated analyses will be used together to acquire the new model  
trajectory for the next round [Laloyaux et al., 2016; 2018]. Though cross-domain observations are not directly assimilated  
into separate earth components, separate earth component analysis benefit from a more coherent coupled-state through the  
70 dynamical coupling at the data assimilation step. Based on Penny et al. [2017], outer loop coupling belongs to the Quasi-  
SCDA methods. Fujii et al. [2020] recently developed a Quasi-SCDA system MRI-CDA1 which applied different  
assimilation window lengths to produce atmospheric and oceanic analyses. Besides model development activities of  
variational CDA systems at operational centers, Smith et al. [2015, 2017, 2018, 2020] comprehensively examined the  
advantages of SC 4D-Var over other variational CDA approaches by using a single-column coupled model.

75 For the EnKF-based CDA systems for complex coupled models, Zhang et al. [2005, 2007] pioneered the  
development of an online EnKF-based CDA system for the Geophysical Fluid Dynamics Laboratory (GFDL) second-  
generation Coupled Model (CM2), and demonstrated that this WC EnKF could reconstruct the variability and trends of the  
ocean correctly in the 20th century. Lu et al. [2015a; 2015b] proposed to assimilate the lagged averaged high-frequency  
atmospheric observations into the ocean to increase the signal-to-noise ratio for the coupled analyses. They proved the  
80 effectiveness of this method for improved coupled analyses with an intermediate-complexity CGCM. Sluka et al. [2016]  
implemented offline WC and SC Local Ensemble Transform Kalman Filters (LETKFs) for an intermediate-complexity  
atmosphere–ocean coupled model and conducted identical twin experiments by assimilating synthetic atmospheric  
observations into the ocean through SC LETKF. Their results show that SCDA with the LETKF produces more accurate  
ocean and atmosphere analyses than WCDA. Sluka [2018] developed a prototype offline CDA system CFSv2-LETKF for  
85 the state-of-the-art coupled model CFSv2 that can be configured in either the WCDA or SCDA mode. The actual  
observation experiments with 50-member CFSv2-LETKF showed that SCDA improves the observation fits for the lower  
atmosphere and upper ocean but degrades the fits in the deep ocean. Karspeck et al. [2018] implemented an offline WC  
Ensemble Adjustment Kalman Filter (EAKF) system for the Community Earth System Model (CESM) and used this system  
to create a 12-year coupled reanalyses from 1970 to mid 1982. Besides the efforts to develop the EnKF-based CDA systems  
90 for complex coupled models, many challenges related to CDA have been recognized using low-order coupled models, which  
are summarized by Penny et al. [2017] and Zhang et al. [2020].

This paper reviews our efforts in exploring the benefits of SCDA over other CDA strategies using a wide range of  
coupled models with increasing complexities. We focus on model state estimations and impact of atmosphere-ocean CDA on  
coupled analysis and short-range weather forecast. Besides model state estimation, Zhang et al. [2020] recently reviewed  
95 parameter estimations and other important applications of CDA. We identified one issue of SC EnKF that can significantly  
degrade SC EnKF analyses and proposed a solution. In Section 2, we start our discussion with a coupled Lorenz model [Peña  
and Kalnay, 2004], investigating the capability of SCDA to constrain the slow and fast modes of a coupled system for both  
ensemble and variational methods simultaneously. In Section 3, we contrast the performance of SC 4D-Var and ECCO-like

4D-Var for ocean analysis in the coupled Lorenz system. Section 4 compares the analysis accuracy of ensemble and variational CDA methods with different CDA strategies by using a coupled Quasi-Geostrophic model. In Sections 5 and 6, we focus on developing EnKF-based CDA systems for complex coupled models (i.e., SPEEDY-NEMO and CFSv2) and comparing the performance of SCDA and WCDA in producing coupled analyses. In Section 7, we review the correlation-cutoff method that significantly improves the SC EnKF analysis when using a small ensemble, and discuss the experimental results with the coupled Lorenz model. Section 8 shows how to take advantage of neural networks to extend the correlation-off method to an intermediate-complexity CGCM. Section 9 gives the summary and discussion.

## 2. CDA Experiments with the coupled Lorenz model

In this section, we discuss results obtained by Singleton [2011] who evaluated the capability of 4D-Var and EnKF in producing coupled analyses with a multi-scale coupled Lorenz system [Peña and Kalnay, 2004]. Different approaches are proposed to enhance those two types of assimilation methods for CDA.

For the CDA experiments, Singleton [2011] adopted the 9-variable coupled Lorenz system developed by Peña and Kalany [2004], of which equations are written as,

$$x_e = \sigma(y_e - x_e) - c_e(Sx_t + k_1) \quad (1)$$

$$y_e = rx_e - y_e - x_e z_e + c_e(Sy_t + k_1) \quad (2)$$

$$z_e = x_e y_e - bz_e \quad (3)$$

$$x_t = \sigma(y_t - x_t) - c(SX + k_2) - c_e(Sx_e + k_1) \quad (4)$$

$$y_t = rx_t - y_t - x_t z_t + c(SY + k_2) + c_e(Sy_e + k_1) \quad (5)$$

$$z_t = x_t y_t - bz_t + c_z Z \quad (6)$$

$$X = \tau\sigma(Y - X) - c(x_t + k_2) \quad (7)$$

$$Y = \tau r X - \tau Y - \tau S X Z + c(y_t + k_2) \quad (8)$$

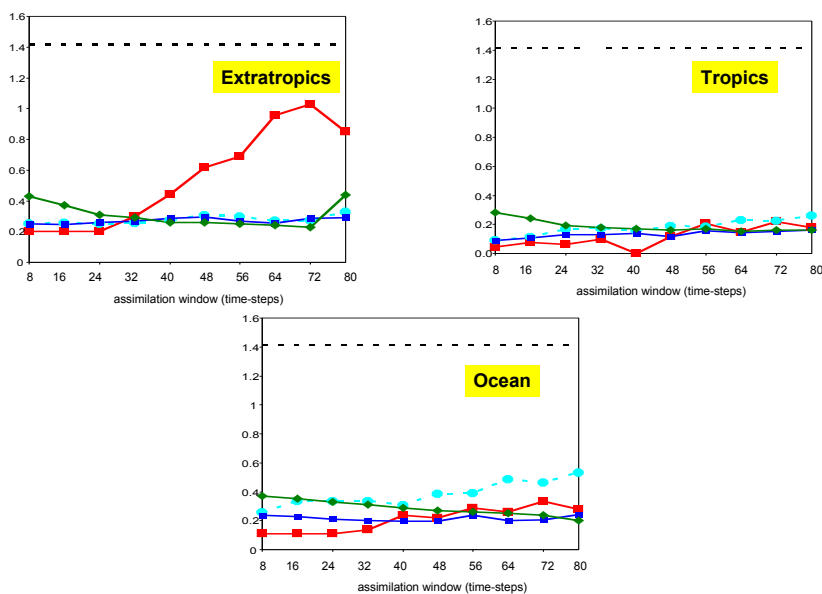
$$Z = \tau S X Y - \tau b Z - c_z z_t \quad (9)$$

where  $[x_e, y_e, z_e]^T$ ,  $[x_t, y_t, z_t]^T$ , and  $[X, Y, Z]^T$  are the state vectors of the extratropical atmosphere, tropical atmosphere, and tropical ocean, respectively. For this system, the tropical atmosphere is strongly coupled with the tropical ocean ( $c=c_z=1$ ) but weakly coupled with the extratropical atmosphere ( $c_e=0.08$ ). Meanwhile, no direct coupling occurs between the extratropical atmosphere and the tropical ocean. Other parameters of this model are  $(\sigma, r, b, \tau, S, k_1, k_2) = (10, 28, \frac{8}{3}, 0.1, 1, 10, -11)$ .

Though simple, this coupled Lorenz system presents multi-scale dynamics and can reproduce “ENSO-like” oscillations for its tropical atmosphere and ocean, making it an ideal testbed for studying predictability and developing data assimilation strategies for CDA [Peña and Kalnay, 2004; Norwood et al., 2013; Norwood et al. 2015; Yoshida and Kalnay, 2018; Yoshida 2019]. Singleton [2011] obtained the nature run by integrating the model using the 4th-order Runge-Kutta method with a time step  $\Delta t = 0.01$ . The analyzed variables in the data assimilation experiments are the full 9-element state vector. Observations are generated every 8 time-steps by adding to the true 9-variable model states the uncorrelated Gaussian errors

with zero mean and a standard deviation of  $\sqrt{2}$ . Besides, assimilation experiments with the Ensemble Transform Kalman Filter (ETKF) in this section use 9 members.

Singleton [2011] found that SC ETKF has the smallest analysis Root Mean Square Error (RMSE) when adopting an  
 135 assimilation interval of 8 time-steps, which is the smallest assimilation interval used in the study. Using longer assimilation  
 intervals for the SC ETKF degrades the coupled analyses and causes the filter divergence eventually, consistent with the  
 finding by Kalnay et al. [2007] that the EnKF prefers short assimilation intervals. Adopting 4D-ETKF [Hunt et al., 2004] or  
 Quasi-Outer Loop [ETKF-QOL, Yang et al., 2012] allows the SC ETKF to utilize long assimilation intervals and improve  
 the coupled analyses (Figure 1). Separate ETKF analyses for the fast (i.e., extratropical and tropical atmosphere) and slow  
 140 modes (e.g., tropical ocean, corresponding to the “Atmospheric coupling” pattern in Yoshida and Kalnay [2018]) show lower  
 analysis error than the SC ETKF, especially when adopting longer assimilation intervals. Among all ETKF-based methods,  
 SC ETKF-QOL using a short assimilation interval of 8 time-steps gives the most accurate analysis.



145 **Figure 1:** Time-averaged Analysis RMSE for SC 4D-Var (green), SC ETKF-QOL (red), SC ETKF with the “atmos-coupling” (Figure 2 of Yoshida and Kalnay [2018]) as the localization pattern (cyan) and its 4D extension (blue) for

the extratropical atmosphere (top left), tropical atmosphere (top right), and ocean (bottom). Adapted from Singleton [2011].

150

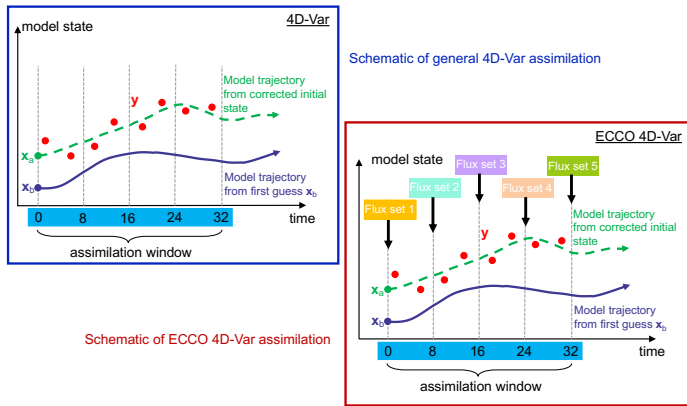
Figure 1 also presents the analysis errors for SC 4D-Var that adopts varying assimilation window lengths. Unlike ETKF, SC 4D-Var analyses with longer assimilation window length generally show lower analysis errors, consistent with the findings by Kalnay et al. [2007]. However, the optimal assimilation window lengths for different Lorenz subsystems are different: the 4D-Var analysis error for the extratropical atmosphere starts to increase if the assimilation window length exceeds 72 time-steps. Singleton [2011] found that such degradation caused by long assimilation window length is due to the multiple minima during the minimization procedure. Implementing the Quasi-Static Variational Data Assimilation [QVA, Pires et al., 1996; Kalnay et al., 2007] to SC 4D-Var avoid such degradation and allows the 4D-Var to utilize an even longer assimilation window to improve the coupled analyses.

155

160 **3. Comparison of the SC and the ECCO-like 4D-Var**

Unlike ordinary 4D-Var that uses the initial model states as the analyzed variables, the ocean analysis Estimating the Circulation and Climate of the Ocean [ECCO; Stammer et al., 2004; Forget et al. 2015; Fukumori et al. 2017] includes additional surface forcing fields and mixing parameters as the analyzed variables in the 4D-Var cost function (Figure 2). The approach allows ECCO to use an extremely long assimilation window of 10 years [Stammer et al., 2004], during which the ocean analysis is guaranteed to conserve momentum, heat and salinity.

165



Deleted: ¶

**Figure 2:** Schematics for the conventional 4D-Var with the initial model states as the control vector, and the ECCO-like 4D-Var with both the initial model states and the external surface fluxes within the assimilation window as the control vector. Adapted from Singleton [2011].

Singleton [2011] conducted one experiment to compare the ocean analyses from the SC 4D-Var using the coupled model, and the ECCO-like 4D-Var using the ocean model forced by the atmosphere. The forced ocean model for the ECCO-like 4D-Var is revised from the coupled Lorenz model [Peña and Kalnay, 2004], which now the ocean is forced by the external surface flux,

$$X = \tau\sigma(Y - X) + f_X \quad (10)$$

$$Y = \tau r X - \tau Y - \tau S X Z + f_Y \quad (11)$$

$$Z = \tau S X Y - \tau b Z + f_Z \quad (12)$$

$$f_X = 0 \quad (13)$$

$$f_Y = 0 \quad (14)$$

$$f_Z = 0 \quad (15)$$

The ECCO-like 4D-Var obtained its analysis  $x_0^a$  by minimizing the cost function

$$J(x_0) = \frac{1}{2} [x_0 - x_0^b]^T B_0^{-1} [x_0 - x_0^b] + \frac{1}{2} \sum_{t=1}^n [H(M_{0,t}(x_0)) - y_t^o]^T R_t^{-1} [H(M_{0,t}(x_0)) - y_t^o] \quad (16)$$

where the control variable  $x_0 = [X_0, Y_0, Z_0, f_{X,1}, f_{Y,1}, f_{Z,1}, f_{X,2}, f_{Y,2}, f_{Z,2}, \dots, f_{X,n}, f_{Y,n}, f_{Z,n}]^T$  in ECCO-like 4D-Var includes both the initial ocean states  $[X_0, Y_0, Z_0]^T$ , and the constant surface fluxes  $[f_{X,i}, f_{Y,i}, f_{Z,i}]$  that force the ocean model for time-steps  $1 + n \times (i - 1)$  to  $n \times i$  for the  $i$ -th assimilation window. Here,  $x_0^b$  represents the initial background state,  $n$  is the length of an assimilation window,  $H$  is an observation operator,  $M_{0,t}$  is a forward operator from time 0 to  $t$ ,  $y_t^o$  is an observation vector at time  $t$ , and  $R_t$  is an observation error covariance matrix. The background error covariance matrix  $B_0$  is defined as

$$B_0 = \begin{bmatrix} B_{x,0} & 0 \\ 0 & B_f \end{bmatrix} \quad (17)$$

Where  $B_{x,0}$  is the background error covariance of the initial ocean states estimated by the National Meteorological Center (NMC) method [Parrish and Derber, 1992].  $B_f$  is the background error covariance for all the surface fluxes, which is assumed diagonal in our experiment, with its diagonal elements representing the time-averaged variance of the flux estimates.

Running the ECCO-like 4D-Var requires the background of both initial ocean states and the surface fluxes (e.g.,  $f_{X,i}^b, f_{Y,i}^b, f_{Z,i}^b, k = 1, \dots, n$ ) at all the time-steps. The real ECCO analysis system uses surface flux estimated from the NCEP Atmospheric Reanalysis [Kalnay et al., 1996] generated by an uncoupled atmospheric model forced by sea surface

200 temperature. To get NCEP-like surface fluxes for our simple model, Singleton [2011] first replaced the active tropical ocean with observations that are created from the true coupled trajectory in the coupled Peña and Kalnay [2004] model. Then the tropical atmosphere is forced by the ocean observations every 8 time-steps while it keeps a weak coupling with the extratropical atmosphere. A 10-member ETKF then produces the analyses for tropical and extratropical atmosphere every 8 time-steps. The final NCEP-like surface fluxes are calculated from the ensemble analysis mean of the tropical atmosphere  
 205 (i.e.,  $[\bar{x}_t^a, \bar{y}_t^a, \bar{z}_t^a]$ ) through

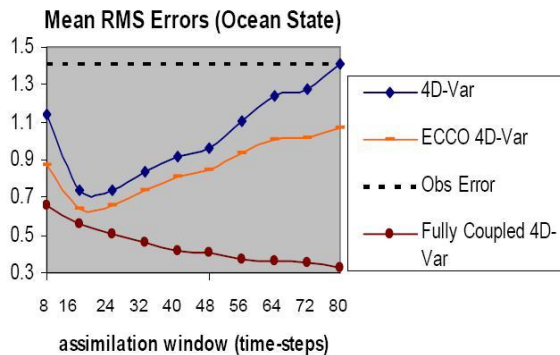
$$f_x = -c(\bar{x}_t^a + k_2) \quad (18)$$

$$f_y = c(\bar{y}_t^a + k_2) \quad (19)$$

$$f_z = -c_z \bar{z}_t^a \quad (20)$$

For the assimilation experiment, ECCO-like 4D-Var integrates the ocean model forced by the constant NCEP-like surface fluxes every 8 time-steps. As the control experiment, Singleton [2011] includes one additional experiment which shares the same setting as the ECCO-like 4D-Var, except that its analyzed variables only include initial ocean states.  
 210

Figure 3 contrasts the performances of different 4D-Var approaches. For the forced ocean model, the ECCO-like 4D-Var approach that simultaneously estimates the ocean states and surface fluxes brings substantial improvements over the ordinary 4D-Var approach that only estimates the initial ocean states, with more significant improvement when utilizing a longer assimilation window. Both of these two 4D-Var analyses have the smallest error when adopting an assimilation window of 16 time-steps. However, the SC 4D-Var approach using the coupled model produces more accurate ocean analysis than the ECCO-like approach using the forced ocean model in terms of analysis RMSE. Besides, the error of SC 4D-Var ocean analyses keeps decreasing with longer assimilation window length up to 80 time-steps.  
 215



220 **Figure 3:** Time averaged analysis RMSE for conventional 4D-Var (blue) and the ECCO-like 4D-Var (orange) using the forced ocean model, and the SC 4D-Var (brown) using the fully coupled model. Adapted from Singleton [2011].



225 **4. Comparisons of 3/4D-Var and EnKF in a coupled QG Model**

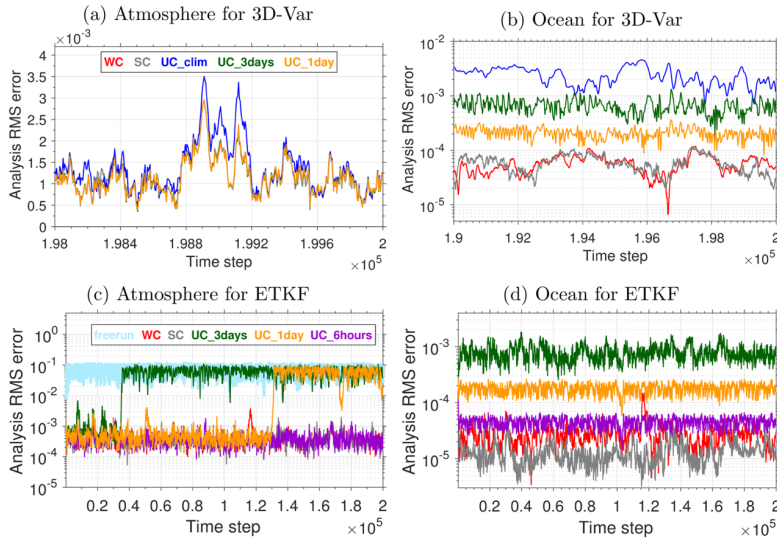
We now discuss results by Penny et al. [2019] and Da [2022] who developed a CDA test bed using the coupled quasi-geostrophic (QG) atmosphere–ocean model MAOOAM (De Cruz et al., 2016), and compared the performance of 3/4D-Var and EnKF with different CDA strategies (i.e., UCDA, WCDA, quasi-SCDA, and SCDA). The MAOOAM model consists of a two-layer atmosphere and a single-layer ocean. It also includes Ekman dynamics at the atmosphere–ocean interface and  
230 simplified radiation parameterizations. The analyzed variables are the 36 nondimensionalized coefficients of spectral modes for the atmosphere ( $N_a=20$ ) and ocean ( $N_o=16$ ). To avoid interpretation complexity due to the inflation schemes in the EnKF, we set the ensemble size as 40, greater than the total dimension of the model states (36), to avoid filter divergence without applying the inflation schemes in the experiment.

Figure 4 (a)-(b) compares the atmosphere and ocean analyses by 3D-Var under three CDA strategies. Each  
235 experiment assimilates the synthetic observations of the full state vector. Figure 4 (b) shows that the WC and SC 3D-Var are more accurate than UC 3D-Var for ocean analyses. Increasing the frequency of surface forcing exchange in UC 3D-Var reduces the ocean analysis error. However, the analysis error with a 1-day forcing update is still one order of magnitude greater than the ocean analyses obtained from the coupled models. For the last ~11 model years, the WC 3D-Var achieves an averaged analysis RMSE of  $1.160 \times 10^{-3}$  for the atmosphere and  $5.516 \times 10^{-5}$  for the ocean. For the SC 3D-Var, the corresponding analysis RMSE is  $1.159 \times 10^{-3}$  for the atmosphere and  $4.915 \times 10^{-5}$  for the ocean, both smaller than the error from the WC 3D-Var. Among all three CDA configurations, SCDA analyses are the most accurate for the coupled states. Besides, the SC 3D-Var shows lower RMSE than the WC 3D-Var for the ocean during the spin-up period, and the SC 3D-Var also experiences a shorter spin-up period (Figure not shown).  
240

Similar to Figure 4 (a)-(b), Figure 4 (c)-(d) extends comparison to the ETKF. UC ETKF with forcing updated less  
245 frequently than every 6 hours has filter divergence for the atmosphere, while such filter divergence does not occur for the WC and SC ETKF that integrate the coupled models. This demonstrates the necessity of using coupled models for the ensemble CDA systems. Similar to 3D-Var, switching from WC to SC ETKF reduces the analysis error for the coupled states. Besides, SC ETKF produces more accurate ocean analyses than the WC ETKF consistently, a feature not seen in the 3D-Var experiments. The improved ocean analyses by SC ETKF demonstrate one advantage of adopting an ensemble SCDA  
250 system.

Formatted: Font: Times New Roman

Formatted: Superscript

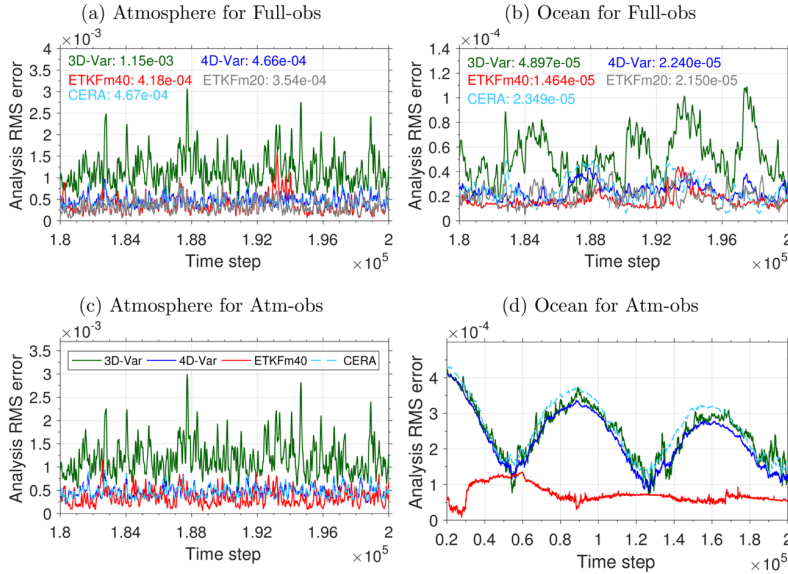


**Figure 4:** Panels (a)-(b): The analysis RMSE of the atmosphere and ocean for 3D-Var analysis with different CDA strategies for the last 100 days for the atmosphere and last 500 days for the ocean. Panels (c)-(d) are similar to (a)-(b) except for the ETKF during the whole experiment period ( $\sim 27.4$  year). Adapted from Penny et al. [2019] and Da [2022].

255

Since comparisons of different CDA strategies show that the SCDA approach shows the most accurate analyses for both 3D-Var and ETKF, we now focus on evaluating the performance of SCDA under different observing networks and extending the comparison to 4D-Var and CERA-like variational analyses [Lalouaux et al., 2016]. The CERA-like variational system integrates the coupled model and generates incremental 4D-Var analysis for the atmosphere and 3D-FGAT analysis for the ocean using the outer loop coupling approach. Both 4D-Var and CERA adopt two outer loops in our experiments. For the ETKF, the 40-member experiment uses no inflation, and the 20-member experiment uses multiplicative background error inflation of 1.01. Besides, all the assimilation methods adopt a 6-hour DA cycle.

260



265

**Figure 5:** Panels (a)-(b): The analysis RMSE under full-coverage observing network for the atmosphere (left) and ocean (right) with the SC 3D-Var (green), 4D-Var (blue), 4D-Var/3DFGAT CERA (cyan dash), 40-member ETKF (red), and 20-member ETKF (gray) for the last 1,000 days. Time averaged analysis RMSE for the last 13.7 years for all methods are shown in the figure. Panels (c)-(d) are similar to (a)-(b) except for only assimilating atmosphere observations. Adapted from Penny et al. [2019] and Da [2022].

270

Figure 5 (a)-(b) shows that when observing both the atmosphere and ocean, the SC 40-member ETKF and 4D-Var have similar accuracies for the atmosphere and ocean analyses, higher than SC 3D-Var. The 20-member ETKF with inflation performs similarly to the 40-member ETKF without inflation. For 4D-Var, applying more outer loops (i.e., 3 and 4) and longer assimilation window lengths (i.e., 12 hours) further reduces the analysis error (figures not shown here), consistent with the findings by Kalany et al. [2007] and Yang et al. [2012]. The CERA-like system with the outer loop coupling shows comparable performance as the SC 4D-Var and 40-member ETKF in this scenario.

Figure 5 (c)-(d) compares the performance of different SCDA methods when only observing the atmosphere. For the atmosphere, ETKF, SC 4D-Var, and CERA present similar analysis accuracies higher than SC 3D-Var. For the ocean, the SC ETKF stabilizes its analysis error after 10 years, while all variational data assimilation methods fail to stabilize the

280

analysis error within the experiment period (~27.4 years). Interestingly, the CERA shows larger analysis errors among all variational methods than the SC 3D-Var and 4D-Var, which utilize a coupled state background error in their formulations. This indicates that the outer loop coupling is insufficient to replace the role of a coupled-state background error covariance for variational CDA.

285        Though the CDA experiments with the coupled QG model indicate that the SC EnKF produces more accurate coupled analyses than the WC EnKF when the ensemble size is sufficient, it is unclear whether this conclusion still holds for the real-observation experiments where the ensemble size is far less than the model dimension. Besides, the QG model mainly describes the midlatitude dynamics, while tropic dynamics is contributed significantly by convection, a mechanism not included in the QG model. Past studies [Kalnay et al., 1986; Peña et al. 2013; Ruiz-Barradas et al., 2017; Bach et al., 290 2019] have shown that the main driving force for the coupled atmosphere-ocean system differs in these two regions, with the ocean driving the atmosphere over tropics, and the atmosphere driving the ocean in mid-latitudes. It is necessary to examine whether the conclusions drawn from the QG model can be applied to the Tropics.

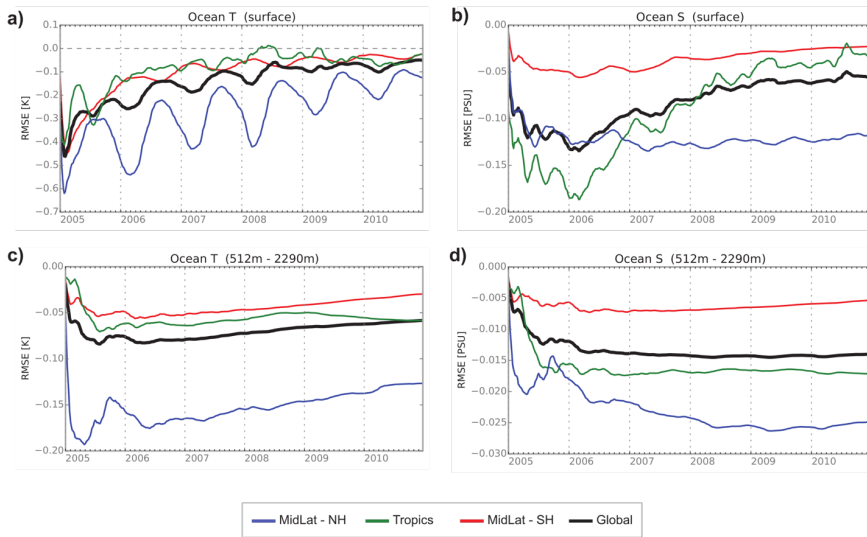
#### 5. SC EnKF with an intermediate complexity CGCM

295        In this section, we compared the performance of the SC and WC EnKF by conducting identical-twin experiments with an intermediate complexity CGCM, SPEEDY-NEMO [Sluka et al., 2016]. The CGCM SPEEDY-NEMO [Kucharski et al., 2016] couples the atmospheric model Simplified Parameterizations, primitive-Equation Dynamics (SPEEDY) version 41 [Molteni, 2003; Kucharski et al., 2006], with the ocean model Nucleus for European Modeling of the Ocean (NEMO) version 3. The atmospheric model SPEEDY version 41 is a hydrostatic spectral model that solves primitive equations at a 300 resolution of T30/L8. The ocean model NEMO adopts 30 vertical levels with z-coordinates and 2° tripolar grids that increase the resolution to 0.25° at the equator.

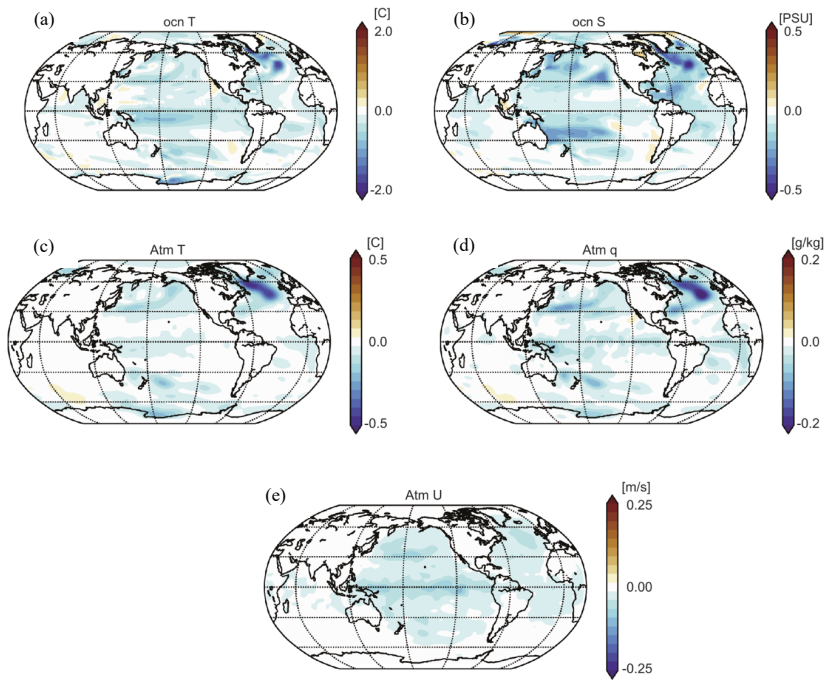
      Sluka et al. [2016] implemented WC and SC EnKF systems for SPEEDY-NEMO by utilizing the existing separate EnKF systems SPEEDY-LETKF [Miyoshi, 2005] and Ocean-LETKF [Penny et al., 2011; 2013]. A 6-year perfect model Observation System Simulation Experiment (OSSE) is then conducted to compare the coupled-state analyses of the WC/SC 305 EnKF. Both experiments use 40 members and adopt a 6-hour assimilation cycle for the atmosphere and oceans. Synthetic atmosphere observations (i.e., surface pressure, vertical profile of temperature, humidity, zonal and meridional winds) are assimilated into the atmosphere in both experiments. Besides, the SCDA experiment assimilates those atmospheric observations into the ocean while the WCDA experiment assimilates nothing into the ocean.

      Figure 6 demonstrates that SC EnKF produces more accurate analyses of sea surface temperature and salinity than 310 WC EnKF over the globe during the whole experiment period, with the most significant improvement in the midlatitude in the Northern Hemisphere. This analysis error reduction for the ocean temperature and salinity brought by SCDA also extends to the deep ocean layer (512m-2290m). Figure 7 examines the global map of analysis error reduction by SCDA for the atmosphere and ocean. Overall, SCDA improves the analysis of the upper ocean temperature and salinity most significantly over the Tropics and the Northern Hemisphere. Interestingly, with no ocean observations assimilated into the

315 atmosphere, the atmosphere analysis in the SCDA experiment still improves thanks to the more accurate ocean analysis through the coupled model integration. Longer model integration is needed to evaluate the performance of SC and WC EnKF after the ocean surface temperature and salinity finishes spin-up.



320 **Figure 6:** Spatially averaged difference of analysis RMSE with SCDA and WCDA for the ocean temperature and salinity at the surface (panels a-b), and at deep ocean (512m-2290m, panels c-d) in the Northern Hemisphere midlatitudes (blue), tropics (green), and Southern Hemisphere midlatitudes (red), and globe (black). Negative values mean RMSE reduction by adopting SCDA. Adapted from Sluka et al. [2016] and Sluka [2018].



325 **Figure 7:** Time-averaged difference of analysis RMSE with SCDA and WCDA for the ocean surface temperature and salinity (panels (a)-(b)), atmospheric temperature, humidity at the lowest atmospheric model level (panels (c-d)),  
 330 and the zonal wind speed throughout the troposphere (panel (e)) for the final 5 years (2006-2010) of the identical twin experiment. Adapted from Sluka et al. [2016] and Sluka [2018].

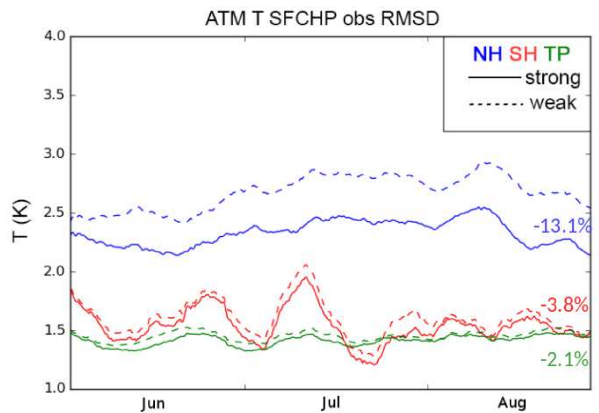
### 6. SC EnKF with the state-of-the-art coupled model CFSv2

335 Sluka [2018] implemented a prototype WC and SC LETKF system CFSv2-LETKF for the operational coupled model Climate Forecast System version 2 [CFSv2, Saha et al., 2006; 2014]. The atmospheric model Global Forecast System (GFS) within the CFSv2-LETKF is a hydrostatic spectral model with hybrid pressure-sigma coordinates. It is configured with a resolution of T62/L64 (~2 degrees). The ocean model GFDL Modular Ocean Model (MOM) version 4 is configured with 40 vertical levels using  $z^*$  coordinates and tripolar horizontal grids of  $0.5^\circ$  that increase to  $0.25^\circ$  at the equator. The CFSv2 LETKF system was built upon the GFS-LETKF [Lien et al., 2016a; 2016b] and the MOM-LETKF [Penny et al., 2011;

2013], with many modules refactored so that the underlying software framework can be reused to implement WC and SC EnKF systems for other coupled models. The CFSv2-LETKF is publicly available at <https://github.com/UMD-AOSC/CFSv2-LETKF>.

With the 50-member CFSv2-LETKF, Sluka [2018] conducted 3-month Observing System Experiments (OSEs) from June to August in 2015 to evaluate the benefits of SCDA over WCDA using real observations. The atmospheric model assimilates the same set of observations for both experiments (Table 3.1 in Sluka [2018]), while additional marine surface reports are assimilated into the ocean model in the SCDA experiment. Unlike the SPEEDY-NEMO experiment, CFSv2-LETKF adopts a 6-hour assimilation cycle for the atmosphere and a 24-hour assimilation cycle for oceans to minimize the initial shock due to the frequent analysis update for the ocean.

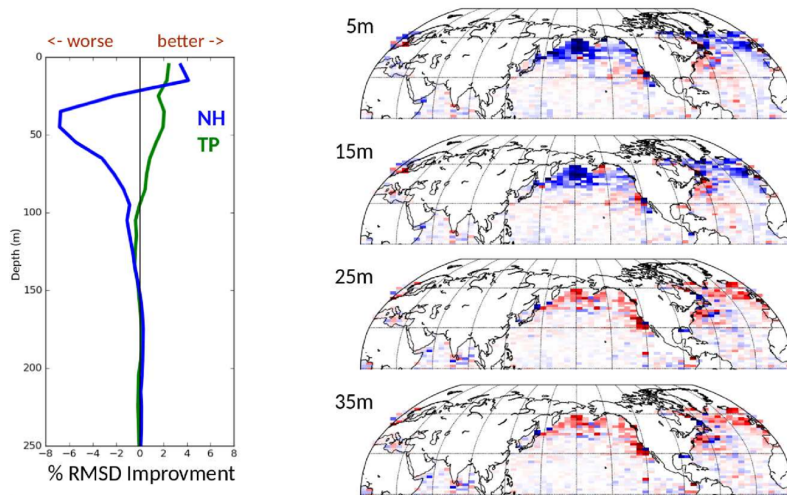
Figure 8 shows that SCDA leads to reduced observation departures for the surface temperature observations than WCDA globally. Substantially improved observation fits is found in the Northern Hemisphere, with a misfit reduction of 13.1%, which is probably contributed by the dense marine surface reports in the Northern Hemisphere. In the Southern Hemisphere and over the Tropics, SCDA reduces the observation misfit by 3.8% and 2.1%, compared to WCDA.



**Figure 8:** RMSD of observation minus 6-hour forecast (O-F) for atmospheric surface temperature observations with the SC (solid) and WC (dashed) CFSv2-LETKF over the Northern Hemisphere (NH), tropics (TR), and southern Hemisphere (SH). Adapted from Sluka et al. [2016] and Sluka [2018].

Figure 9 verifies the model ocean temperature against independent ocean temperature profiles. SCDA shows better observation fitting than WCDA for the 100-m upper layers of tropical oceans. In the Northern Hemisphere, SCDA improves the fitting for the 25-m upper layer but degrades the fitting below this depth. Since no vertical localization is applied in the

ocean LETKF update, the degradation below 25-m depth is probably due to the sampling error caused by the small ensemble size. With no vertical localization, the long-distance error correlations between observations and analyzed variables cannot be reliably estimated by the small ensemble, especially for the weak correlation from those physically “irrelevant” cross-domain state-observations pairs that appears more frequently in the SCDA.



**Figure 9:** RMSD reduction of observation minus 6-hour forecast (O-F) for ocean temperature by switching from WC to SC CFSv2-LETKF. The left panel shows the spatially averaged RMSD change (improvements with positive value, and degradation with negative value) that varies with the ocean depth over the Northern Hemisphere (NH, blue) and tropics (TR, green). The right panel shows the spatial distribution of the RMSD by switching from WC to SC (improvements in blue, and degradation in red) at selected ocean depth. Adapted from Sluka et al. [2016] and Sluka [2018].

370

### 7. Correlation-cutoff method for the SC EnKF

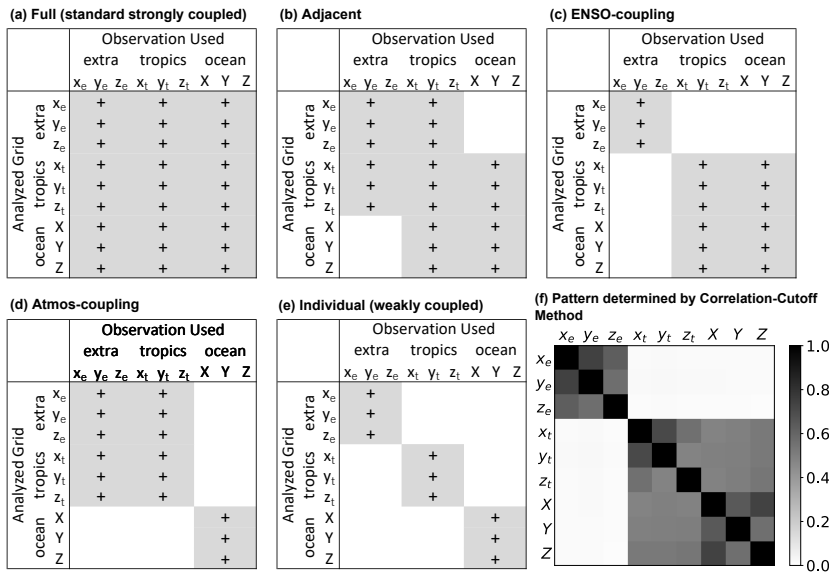
Yoshida and Kalnay [2018] proposed the correlation-cutoff method, which can reduce the spurious error correlations among different state-observation pairs, thus improving the performance of the SC EnKF with a small ensemble size. Through the analysis of the Kalman Filter equations, Yoshida and Kalnay [2018] showed that the analysis increment due to the assimilation of each observation is proportional to the square of the error correlations between the analyzed model state and the observation simulations. In the correlation-cutoff method [Yoshida and Kalnay, 2018], only observations that show

375



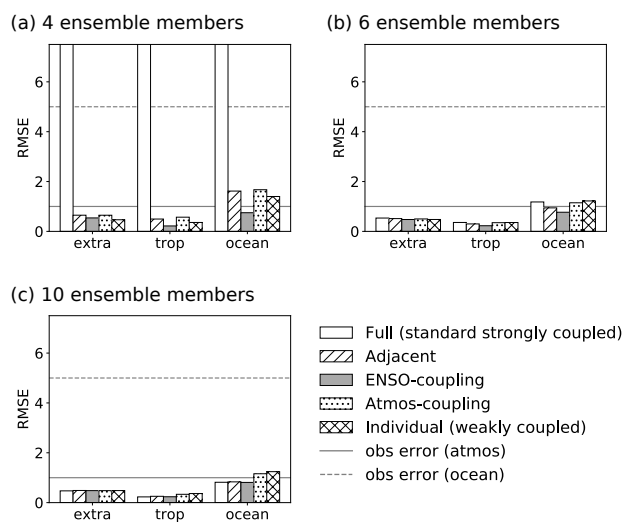
strong time-averaged squared background error correlation with the model states are assimilated by the SC EnKF, since a small ensemble cannot reliably estimate the weak error correlations for “irrelevant” state-observation pairs.

The underlying idea of the correlation-cutoff method is similar to the “variable localization” technique for the coupled atmosphere-carbon assimilation [Kang et al., 2011], in which the error correlation between physically irrelevant variables (e.g., carbon flux and the specific humidity) are manually zeroed out for the EnKF. However, unlike the “variable localization” that removes the nonzero error correlation empirically, the correlation-cutoff method automates this process based on the time-averaged squared background error correlation using data acquired from offline assimilation experiments, which is desirable for CDA since it is nontrivial to determine whether the error correlation between cross-domain observation-state pairs should be zeroed out.



**Figure 10:** (a-e) Covariance localization patterns tested in the assimilation experiments of Yoshida and Kalnay [2018], and (f) the time-averaged squared background error correlation for different pairs of model state and observation types obtained from the independent offline LETKF experiments. Adapted from Yoshida and Kalnay [2018] and Yoshida [2019].

Yoshida and Kalnay [2018] then examined the effectiveness of the correlation-cutoff method on SC EnKF using the coupled Lorenz system [Pena and Kalnay, 2004]. Figure 10 (f) shows that the localization pattern determined by the correlation-cutoff method is like ENSO-coupling (Figure 10): with strong error correlation ( $\overline{cov\sigma\sigma^2} \sim 0.5$ ) between the tropical atmosphere and the tropical ocean, and weak correlation ( $\overline{cov\sigma\sigma^2} < 0.03$ ) between the extra-tropical atmosphere and the other two components. This squared correlation map suggests assimilating the extra-tropical observations into the extra-tropical atmosphere, and tropical observations into the tropical atmosphere and ocean.



400 **Figure 11:** Time-averaged analysis RMSE with different localization patterns. Horizontal lines show the observation errors for the atmosphere (solid) and ocean (dashed). Note that the filter diverged in the 4-member *Full* experiment. Adapted from Yoshida and Kalnay [2018] and Yoshida [2019].

405 Figure 11 compares the analysis accuracy of the SCDA informed by the correlation-cutoff of the EnKF with five different localization patterns (Figure 10), including WCDA, SCDA, and SCDA guided by the correlation-cutoff method. All experiments are repeated with three different ensemble sizes of 4, 6, and 10. Figure 11 shows that SCDA (“Full” experiment in the figure) is less accurate than WCDA (“Individual”) or even experiences filter divergence with an insufficient ensemble size of 4 or 6, while SCDA is more accurate than WCDA with a sufficient ensemble size of 10. 410 Meanwhile, SCDA guided by the correlation-cutoff method (“ENSO-coupling”) generates the most accurate analysis

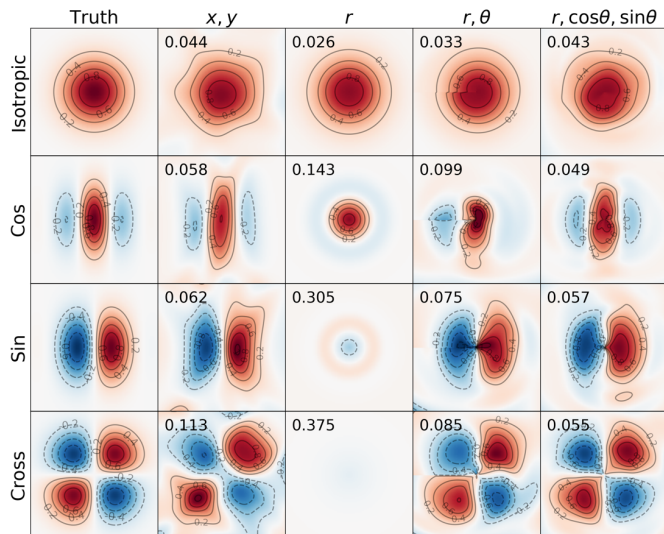
regardless of the ensemble size, demonstrating the necessity to ignore the weak error correlation for improved SC EnKF analyses.

#### 415 **8. Emulate the localization functions with the neural networks**

In this section, we discuss the results by Yoshida [2019] who applied the correlation-cutoff method to the more realistic models by using neural networks (NNs). Extending the correlation-cutoff method to a more realistic model is challenging because it requires functions that can predict the squared error correlations for each pair of observation and model state types and change values based on their spatial separation distance. For the operational SCDA application, this function must also  
420 be computationally cheap and fast since it is evaluated for all the observations within an influence radius around the analysis grid. Yoshida [2019] proposed to train one neural network (NN) for each pair of observation and model state type that predicts the squared error correlation based on the attributes of the model state (e.g., geophysical location, time information) and observations (e.g., geophysical location and viewing geometry). Once trained, the NN can make fast predictions with low computational costs.

425 Yoshida [2019] first demonstrated the effectiveness of the NN in predicting the error correlation and its square by using the NN to emulate the error correlations of four toy error correlation models under geostrophic balance. Predicting the error correlations instead of their squares is more challenging since the error correlation changes sign at different quadrants for error correlations of winds. The trained NNs will predict the error correlation with varying combinations of explanatory variables (up to 3) as inputs. The NN for each error correlation model is a two-layer feedforward NN with 10 hidden units,  
430 with the hyperbolic tangent chosen as the activation function. The training dataset is created by adding Gaussian error with a standard deviation of 0.2 to the true error correlation. The trained NN is then obtained by minimizing the squared regression error with 1000 samples of the training datasets. Figure 12 shows that with proper explanatory variables (from the 2nd to the last columns) as the input, the NN can effectively predict the signs and values of the true error correlation (1st column). The other experiment that directly predicts the squared error correlation with the NNs shares similar results.

435 Yoshida [2019] then utilized the NN to predict vertical error correlations of the zonal wind for the intermediate CGCM Fast Ocean Atmosphere Model (FOAM, Jacob [1997]). In this case, the NN is a two-layer feedforward NN with 30 hidden units, and it uses only 4 explanatory variables as its inputs: the distance between the analysis grid and the observation, the latitude of the analysis grid, and the vertical coordinate of the analysis grids and its counterpart for the observation. The NN is trained with the analysis ensemble from an offline 64-member WC ETKF experiment. Figure 13  
440 shows that the error correlations predicted by the NN shares similar structures as those acquired using the NMC method, confirming that the NN can predict the error correlation for different state-observations pairs.



**Figure 12:** The true error correlations modeled by 4 toy correlation models (1<sup>st</sup> column) and the emulated ones with the neural network by adopting different sets of explanatory variables (columns 2-5). The RMS regression errors verified against independent validation datasets are shown in each panel. Adapted from Yoshida [2019].

445

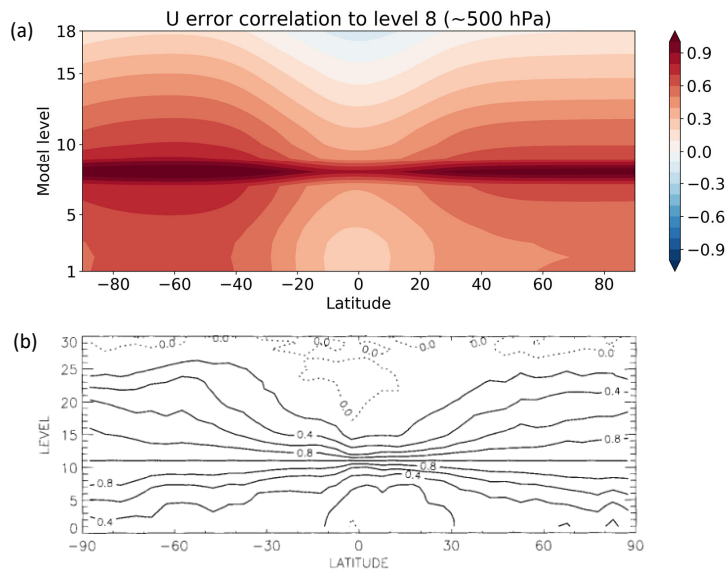
With the error correlation square predicted by the NNs, the final localization value  $\rho$  informed by the correlation-cutoff method is calculated as

$$\rho = g(c) = \begin{cases} 0, & c^2 \leq c_{cutoff}^2 \\ 1 - \left( \frac{1-c^2}{1-c_{cutoff}^2} \right)^2, & c_{cutoff}^2 < c^2 \leq 1 \\ 1, & c^2 > 1 \end{cases} \quad (19)$$

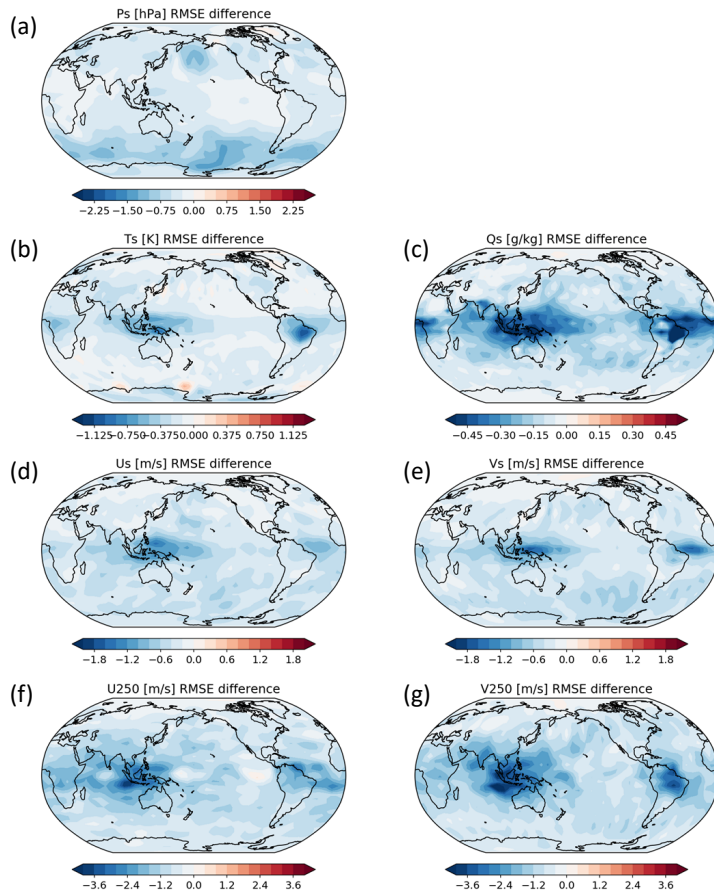
450 where  $c^2$  is the squared error correlation predicted by the NN, and  $c_{cutoff}^2$  is a predefined cutoff parameter. A reasonable  $c_{cutoff}^2$  should be at least greater than  $1/(\text{ensemble size}-1)$  since any correlation under this value is unreliable [Pitman, 1937]. For the later assimilation experiments, the cutoff parameter of 0.1 is selected.

455 Yoshida [2019] then conducted a 1-year OSSE with the coupled model FOAM to compare the performance of SC EnKF with the traditional localization functions and the localization function informed by the correlation-cutoff method with the NN. Figure 14 shows that the correlation-cutoff method with the NN improves the 24-hour forecast for different surface atmospheric variables (i.e., surface pressure, temperature, humidity, and winds) almost everywhere, except at high latitudes

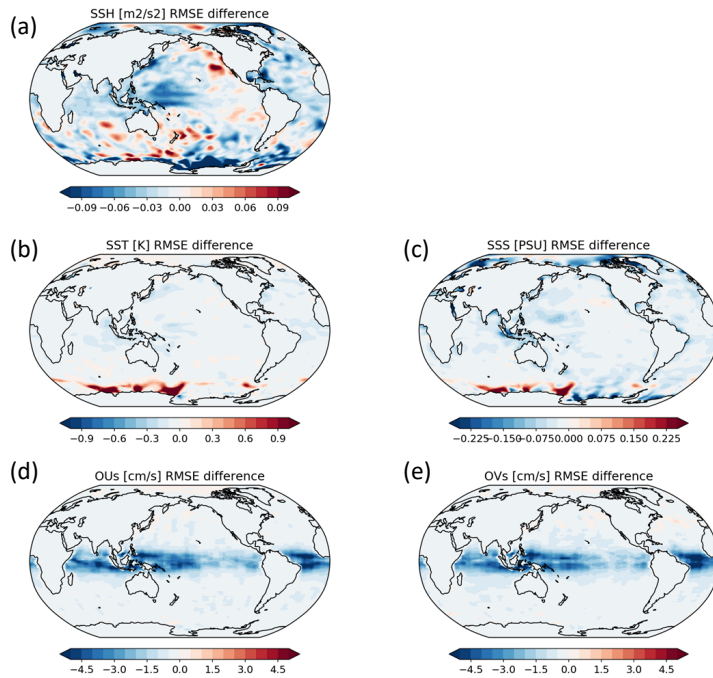
in the Northern Hemisphere, with the most significant improvements over the tropics. This improvement also extends to the upper atmosphere up to 250hPa. For oceans (Figure 15), the correlation-cutoff method improves the 24-hour forecast of sea surface temperature and salinity globally except at high latitudes in the Southern Hemisphere. Besides, the correlation-cutoff method also reduces the forecast error of ocean currents except at high latitudes in the Northern Hemisphere. Overall, the correlation-cutoff method with the NN improves the analyses and forecasts of the SC EnKF.



**Figure 13:** The vertical background ensemble auto-correlation of zonal winds to the model level of approximately 500hPa (a) emulated by the neural network for the model FOAM, and (b) calculated with the NMC method for the operational model by Ingleby in [2001]. Adapted from Yoshida [2019].



470 **Figure 14:** Difference of background (24-hour forecast) RMSEs between the correlation-cutoff with neural network and standard strongly coupled EnKF OSSEs. Blue (red) colors show smaller (larger) errors in the correlation-cutoff experiment. Errors are for atmospheric variables. Adapted from Yoshida [2019].



475

**Figure 15:** Same as Figure 14 but for oceanic variables. Adapted from Yoshida [2019].

### 9. Summary and discussion

We have reviewed our research progress about CDA by using a hierarchy of coupled models with increasing complexities, ranging from the simple coupled Lorenz model to the state-of-the-art operational coupled model CFSv2. With the Lorenz model, we proved that SC EnKF and 4D-Var could constrain the fast and slow modes of the coupled model simultaneously. EnKF produces the most accurate coupled analyses with a short assimilation window length. Applying 4D-extension or the Quasi-outer-loop allows the EnKF to utilize longer assimilation windows to improve the coupled analyses. Unlike EnKF, SC 4D-Var prefers long assimilation windows, consistent with the findings by Kalnay et al. [2007]. It is shown that the SC EnKF with a sufficient ensemble size and SC 4D-Var have similar accuracies if using their optimal assimilation window lengths. Compared to the ECCO-like 4D-Var with the forced ocean model, the SC 4D-Var using the coupled model can

produce more accurate ocean analysis, demonstrating the benefits of adopting the SCDA approach even for producing single-domain analysis.

490 Experiments with a coupled QG model show that SCDA produces more accurate analyses than WCDA and UCDA for both variational and ensemble methods. Besides, SC ETKF shows persistent smaller ocean analysis errors than WC ETKF, a phenomenon not observed for 3D-Var. Comparison of SCDA approaches under a full observing network shows that EnKF and 4D-Var reach similar analysis accuracy higher than 3D-Var. The CERA-like approach using the “outer-loop coupling” shows comparable performance as the SC 4D-Var and ETKF. If only assimilating atmosphere observations, all variational assimilation methods using the static background error fail to stabilize their analyses for the experiment period, 495 with the CERA-like system showing the worst performance, indicating that the outer-loop coupling approach alone cannot replace the role of the full-coupled background error covariance for the variational systems.

Given the similar performance of the SC 4D-Var and EnKF confirmed by the experiments with low-order models and the simple structure of the EnKF, we focused on developing EnKF-based CDA systems to which underlying software framework can be applied to the complex CGCM. Sluka et al. [2016] and Sluka [2018] developed a flexible LETKF-based 500 CDA software framework and applied it to an intermediate-complexity coupled model SPEEDY-NEMO and the state-of-the-art operational coupled model CFSv2. Through assimilation experiments by assimilating synthetic or real atmospheric observations into the ocean through the SC EnKF with a small ensemble size, we found that SCDA produces more accurate lower atmosphere and upper ocean analyses than WCDA. However, we noticed that SCDA with the CFSv2-LETKF degrades the observation fits for the deep ocean layers, probably due to the suboptimal analysis update arising from the 505 spurious error correlation estimated by the small ensemble used by the SCDA system.

Yoshida and Kalnay [2018] developed the correlation-cutoff method to alleviate the spurious error correlation problem in the SCDA. In the correlation-cutoff method, only those cross-domain observations that show strong ensemble correlations with the updated model variables are assimilated in the SCDA systems. Experiments with the coupled Lorenz model show that SCDA informed by the correlation-cutoff method outperforms the SCDA and WCDA regardless of 510 ensemble size. To apply the correlation-cutoff method to complex CGCMs, Yoshida [2019] utilized the neural networks to acquire observation localization functions for different state-observation pairs systematically. The perfect model experiments with a CGCM showed promising results using this method.

As the computing resources increase, we expect SCDA with the EnKF to play a more critical role in producing coupled analyses. For now, the tremendous computational resources (i.e., long CPU runtime and related queue time, and 515 high demand for disk storage) required by the EnKF-based SCDA systems prohibits the wide adoption of the EnKF-based CDA approaches. Efforts shall be made to reduce the computational resources related to CDA. For example, the online assimilation approach by Zhang et al. [2005, 2007] is an admirable attempt to alleviate this issue. Since their EnKF is implemented as a subroutine within the CGCM, all CDA procedures are conducted rapidly in the memory by avoiding frequent I/O of restart files. Other promising solutions include running the CGCM and its CDA package with reduced 520 precisions [Vána et al., 2017; Lang et al., 2021], and developing emulators for the CGCM using machine learning and



Artificial Intelligence techniques [Pathak et al., 2022; Lam et al., 2022]. Besides computational resource challenges, extending the SCDA approach to more coupled earth system components is also desirable. While our study has focused on coupled atmosphere-ocean analyses, the SCDA approach has shown its superiority to other CDA methods for other coupled components, such as coupled land-atmosphere DA [Lin and Pu, 2018; 2020].

525 Another potential future application for CDA is for coupled Earth–Human Systems, where Earth system components are coupled with Human System components using bidirectional feedbacks [e.g., Motesharrei et al. 2014]. Dynamical models of the Human System are not yet broadly developed, leading to uncertainties when making projections using coupled models. CDA will be a crucial method to quantify and constrain these uncertainties [Motesharrei et al., 2016]. Furthermore, there are certain parameters of the Human System that could be reliably estimated from observations but there remain many uncertain parameters, especially coupling parameters. CDA can significantly contribute to estimation of these 530 parameters [e.g., Liu et al., 2014], especially when combined with Machine Learning algorithms. These advancements can help determine the Carrying Capacity of coupled human–natural systems and guide policymakers to keep these systems within their sustainable boundaries [Mote et al., 2020].

#### 535 **Author Contributions**

EK supervised all the research by Tamara Singleton, TS, TY, and CD. TS, TY, and CD conducted the CDA experiments and performed the analysis. SM and EK conducted research about the coupled Earth–Human Systems. All authors drafted and revised this manuscript together.

#### 540 **Competing Interests**

The contact author has declared that none of the authors has any competing interests.

#### **Code Availability**

545 The source codes of the CFSv2-LETKF are available at <https://github.com/UMD-AOSC/CFSv2-LETKF> under GNU General Public License v2.0 (Last access: January 4, 2023).

#### **Acknowledgment**

550 CD was supported by the NASA Headquarters under the NASA Earth and Space Science Fellowship Program 80NSSC18K1403. CD also acknowledges support from NASA NNH20ZDA001N-MAP. TS was supported by the Monsoon Mission Directorate (grant MMSERPUnivMaryland). TY was supported by the Japanese Government Long-term Overseas Fellowship Program. EK and SM were supported by the Monsoon Mission II funding for this work (Grant IITMMIIUNIVMARYLANDUSA2018INT1) provided by the Ministry of Earth Science, Government of India. EK and SM were also supported by the CISESS grant "Advanced EFSO-Based QC Methods for Operational Use and Agile

Implementation of New Observing Systems", as a subaward from the National Oceanic and Atmospheric Administration  
555 NOAA master grant NA14NES4320003. EK's group is also supported by a subaward from NASA IRET-QRS-22-0001.

## References

- Bach, E., Motesharrei, S., Kalnay, E., and Ruiz-Barradas, A.: Local Atmosphere–Ocean Predictability: Dynamical Origins,  
560 Lead Times, and Seasonality, *Journal of Climate*, 32, 7507–7519, <https://doi.org/10.1175/JCLI-D-18-0817.1>, 2019.
- Browne, P. A., de Rosnay, P., Zuo, H., Bennett, A., and Dawson, A.: Weakly Coupled Ocean–Atmosphere Data  
Assimilation in the ECMWF NWP System, *Remote Sensing*, 11, <https://doi.org/10.3390/rs11030234>, 2019.
- Carrassi, A., Bocquet, M., Bertino, L., and Evensen, G.: Data assimilation in the geosciences: An overview of methods,  
issues, and perspectives, *WIREs Climate Change*, 9, e535, <https://doi.org/10.1002/wcc.535>, 2018.
- 565 Da, C.: Assimilation of Precipitation and Nonlocal Observations in the LETKF, and Comparison of Coupled Data  
Assimilation Strategies with a Coupled Quasi-geostrophic Atmosphere-Ocean Model, PhD Thesis, University of  
Maryland, 185 pp., 2022.
- De Cruz, L., Demaeyer, J., and Vannitsem, S.: The Modular Arbitrary-Order Ocean-Atmosphere Model: MAOOAM v1.0,  
*Geosci. Model Dev.*, 9, 2793–2808, <https://doi.org/10.5194/gmd-9-2793-2016>, 2016.
- 570 Forget, G., Campin, J.-M., Heimbach, P., Hill, C. N., Ponte, R. M., and Wunsch, C.: ECCO version 4: an integrated  
framework for non-linear inverse modeling and global ocean state estimation, *Geoscientific Model Development*, 8,  
3071–3104, <https://doi.org/10.5194/gmd-8-3071-2015>, 2015.
- Fujii, Y., Ishibashi, T., Yasuda, T., Takaya, Y., Kobayashi, C., and Ishikawa, I.: Improvements in tropical precipitation and  
sea surface air temperature fields in a coupled atmosphere–ocean data assimilation system, *Quarterly Journal of the*  
575 *Royal Meteorological Society*, 147, 1317–1343, <https://doi.org/10.1002/qj.3973>, 2021.
- Fukumori, I., Wang, O., Fenty, I., Forget, G., Heimbach, P., and Ponte, R. M.: ECCO version 4 release 3,  
<https://doi.org/doi:1721.1/110380>, 2017.
- Hackert, E., Kovach, R. M., Molod, A., Vernieres, G., Borovikov, A., Marshak, J., and Chang, Y.: Satellite Sea Surface  
Salinity Observations Impact on El Niño/Southern Oscillation Predictions: Case Studies From the NASA GEOS  
580 Seasonal Forecast System, *Journal of Geophysical Research: Oceans*, 125, e2019JC015788,  
<https://doi.org/10.1029/2019JC015788>, 2020.

- Hoskins, B.: The potential for skill across the range of the seamless weather-climate prediction problem: a stimulus for our science, *Quarterly Journal of the Royal Meteorological Society*, 139, 573–584, <https://doi.org/10.1002/qj.1991>, 2013.
- 585 Hunt, B. R., Kalnay, E., Kostelich, E. J., Ott, E., Patil, D. J., Sauer, T., Szunyogh, I., Yorke, J. A., and Zimin, A. V.: Four-dimensional ensemble Kalman filtering, *Tellus A: Dynamic Meteorology and Oceanography*, 56, 273–277, <https://doi.org/10.3402/tellusa.v56i4.14424>, 2004.
- Ingleby, N. B.: The statistical structure of forecast errors and its representation in The Met. Office Global 3-D Variational Data Assimilation Scheme, *Quarterly Journal of the Royal Meteorological Society*, 127, 209–231, 590 <https://doi.org/10.1002/qj.49712757112>, 2001.
- Jacob, R. L.: Low frequency variability in a simulated atmosphere-ocean system, PhD Thesis, The University of Wisconsin-Madison, 1997.
- Kalnay, E., Mo, K. C., and Paegle, J.: Large-Amplitude, Short-Scale Stationary Rossby Waves in the Southern Hemisphere: Observations and Mechanistic Experiments to Determine their Origin, *Journal of Atmospheric Sciences*, 43, 252–595 275, [https://doi.org/10.1175/1520-0469\(1986\)043<0252:LASSSR>2.0.CO;2](https://doi.org/10.1175/1520-0469(1986)043<0252:LASSSR>2.0.CO;2), 1986.
- Kalnay, E., Kanamitsu, M., Kistler, R., Collins, W., Deaven, D., Gandin, L., Iredell, M., Saha, S., White, G., Woollen, J., Zhu, Y., Chelliah, M., Ebisuzaki, W., Higgins, W., Janowiak, J., Mo, K. C., Ropelewski, C., Wang, J., Leetmaa, A., Reynolds, R., Jenne, R., and Joseph, D.: The NCEP/NCAR 40-Year Reanalysis Project, *Bulletin of the American Meteorological Society*, 77, 437–472, [https://doi.org/10.1175/1520-0477\(1996\)077<0437:TNYRP>2.0.CO;2](https://doi.org/10.1175/1520-0477(1996)077<0437:TNYRP>2.0.CO;2), 1996.
- 600 Kalnay, E., LI, H., MIYOSHI, T., YANG, S.-C., and BALLABRERA-POY, J.: 4-D-Var or ensemble Kalman filter?, *Tellus A*, 59, 758–773, <https://doi.org/10.1111/j.1600-0870.2007.00261.x>, 2007.
- Kang, J.-S., Kalnay, E., Liu, J., Fung, I., Miyoshi, T., and Ide, K.: “Variable localization” in an ensemble Kalman filter: Application to the carbon cycle data assimilation, *Journal of Geophysical Research: Atmospheres*, 116, <https://doi.org/10.1029/2010JD014673>, 2011.
- 605 Karspeck, A. R., Danabasoglu, G., Anderson, J., Karol, S., Collins, N., Vertenstein, M., Raeder, K., Hoar, T., Neale, R., Edwards, J., and Craig, A.: A global coupled ensemble data assimilation system using the Community Earth System Model and the Data Assimilation Research Testbed, *Quarterly Journal of the Royal Meteorological Society*, 144, 2404–2430, <https://doi.org/10.1002/qj.3308>, 2018.
- Kucharski, F., Molteni, F., and Bracco, A.: Decadal interactions between the western tropical Pacific and the North Atlantic Oscillation, *Climate Dynamics*, 26, 79–91, <https://doi.org/10.1007/s00382-005-0085-5>, 2006.
- 610

- Kucharski, F., Ikram, F., Molteni, F., Farneti, R., Kang, I.-S., No, H.-H., King, M. P., Giuliani, G., and Mogensen, K.: Atlantic forcing of Pacific decadal variability, *Climate Dynamics*, 46, 2337–2351, <https://doi.org/10.1007/s00382-015-2705-z>, 2016.
- 615 Laloyaux, P., Balmaseda, M., Dee, D., Mogensen, K., and Janssen, P.: A coupled data assimilation system for climate reanalysis, *Quarterly Journal of the Royal Meteorological Society*, 142, 65–78, <https://doi.org/10.1002/qj.2629>, 2016.
- Laloyaux, P., de Boisseson, E., Balmaseda, M., Bidlot, J.-R., Broennimann, S., Buizza, R., Dalhgren, P., Dee, D., Haimberger, L., Hersbach, H., Kosaka, Y., Martin, M., Poli, P., Rayner, N., Rustemeier, E., and Schepers, D.: CERA-20C: A Coupled Reanalysis of the Twentieth Century, *Journal of Advances in Modeling Earth Systems*, 10, 1172–1195, <https://doi.org/10.1029/2018MS001273>, 2018.
- 620 Lam, R., Sanchez-Gonzalez, A., Willson, M., Wirthberger, P., Fortunato, M., Pritzel, A., Ravuri, S., Ewalds, T., Alet, F., Eaton-Rosen, Z., Hu, W., Merose, A., Hoyer, S., Holland, G., Stott, J., Vinyals, O., Mohamed, S., and Battaglia, P.: GraphCast: Learning skillful medium-range global weather forecasting, <https://doi.org/10.48550/ARXIV.2212.12794>, 2022.
- 625 Lang, S. T. K., Dawson, A., Diamantakis, M., Dueben, P., Hatfield, S., Leutbecher, M., Palmer, T., Prates, F., Roberts, C. D., Sandu, I., and Wedi, N.: More accuracy with less precision, *Quarterly Journal of the Royal Meteorological Society*, 147, 4358–4370, <https://doi.org/10.1002/qj.4181>, 2021.
- Lawless A. S.: A note on the analysis error associated with 3D-FGAT. *Q. J. R. Meteorol. Soc.* **136**: 1094–1098, doi: 10.1002/qj.619. 2010.
- 630 Lea, D. J., Mirouze, I., Martin, M. J., King, R. R., Hines, A., Walters, D., and Thurlow, M.: Assessing a New Coupled Data Assimilation System Based on the Met Office Coupled Atmosphere–Land–Ocean–Sea Ice Model, *Monthly Weather Review*, 143, 4678–4694, <https://doi.org/10.1175/MWR-D-15-0174.1>, 2015.
- Lee, M.-S. D. Barker, W. Huang, and Y.-H. Kuo: First guess at appropriate time (FGAT) with WRF 3DVAR. *WRF/MM5 Users Workshop*, pp. 22-25. 2004.
- 635 Lien, G.-Y., Miyoshi, T., and Kalnay, E.: Assimilation of TRMM Multisatellite Precipitation Analysis with a Low-Resolution NCEP Global Forecast System, *Monthly Weather Review*, 144, 643–661, <https://doi.org/10.1175/MWR-D-15-0149.1>, 2016a.
- Lien, G.-Y., Kalnay, E., Miyoshi, T., and Huffman, G. J.: Statistical Properties of Global Precipitation in the NCEP GFS Model and TMPA Observations for Data Assimilation, *Monthly Weather Review*, 144, 663–679, <https://doi.org/10.1175/MWR-D-15-0150.1>, 2016b.
- 640

- Liu, Y., Z. Liu, S. Zhang, R. Jacob, F. Lu, X. Rong, and S. Wu. 2014. "Ensemble-Based Parameter Estimation in a Coupled General Circulation Model." *Journal of Climate* 27 (18): 7151–62. <https://doi.org/10.1175/JCLI-D-13-00406.1>.
- Lu, F., Liu, Z., Zhang, S., and Liu, Y.: Strongly Coupled Data Assimilation Using Leading Averaged Coupled Covariance (LACC). Part I: Simple Model Study, *Monthly Weather Review*, 143, 3823–3837, <https://doi.org/10.1175/MWR-D-14-00322.1>, 2015a.
- 645
- Lu, F., Liu, Z., Zhang, S., Liu, Y., and Jacob, R.: Strongly Coupled Data Assimilation Using Leading Averaged Coupled Covariance (LACC). Part II: CGCM Experiments, *Monthly Weather Review*, 143, 4645–4659, <https://doi.org/10.1175/MWR-D-15-0088.1>, 2015b.
- Miyoshi, T.: Ensemble Kalman filter experiments with a primitive-equation global model, PhD Thesis, University of Maryland, College Park, MD, USA, 226 pp., 2005.
- 650
- Molteni, F.: Atmospheric simulations using a GCM with simplified physical parametrizations. I: model climatology and variability in multi-decadal experiments, *Climate Dynamics*, 20, 175–191, <https://doi.org/10.1007/s00382-002-0268-2>, 2003.
- 655
- Mote, Safa, Jorge Rivas, and Eugenia Kalnay. 2020. "A Novel Approach to Carrying Capacity: From a Priori Prescription to a Posteriori Derivation Based on Underlying Mechanisms and Dynamics." *Annual Review of Earth and Planetary Sciences* 48 (1): 657–683. <https://doi.org/10.1146/annurev-earth-053018-060428>.
- Motesharrei, Safa, Jorge Rivas, and Eugenia Kalnay. 2014. "Human and Nature Dynamics (HANDY): Modeling Inequality and Use of Resources in the Collapse or Sustainability of Societies." *Ecological Economics* 101 (May): 90–102. <https://doi.org/10.1016/j.ecolecon.2014.02.014>.
- 660
- Motesharrei, Safa, Jorge Rivas, Eugenia Kalnay, Ghassem R. Asrar, Antonio J. Busalacchi, Robert F. Cahalan, Mark A. Cane, et al. 2016. "Modeling Sustainability: Population, Inequality, Consumption, and Bidirectional Coupling of the Earth and Human Systems." *National Science Review* 3 (4): 470–494. <https://doi.org/10.1093/nsr/nww081>.
- Mulholland, D. P., Laloyaux, P., Haines, K., and Balmaseda, M. A.: Origin and Impact of Initialization Shocks in Coupled Atmosphere–Ocean Forecasts, *Monthly Weather Review*, 143, 4631–4644, <https://doi.org/10.1175/MWR-D-15-0076.1>, 2015.
- 665
- Norwood, A.: Bred vectors, singular vectors, and Lyapunov vectors in simple and complex models, PhD Thesis, University of Maryland, 122 pp., 2015.
- Norwood, A., Kalnay, E., Ide, K., Yang, S.-C., and Wolfe, C.: Lyapunov, singular and bred vectors in a multi-scale system: an empirical exploration of vectors related to instabilities, *Journal of Physics A: Mathematical and Theoretical*, 46, 254021, 2013.
- 670

- Parrish, D. F. and Derber J.C.: The National Meteorological Center's spectral statistical interpolation analysis system. *Mon. Weather Rev.*, 120:1747-1763.
- Palmer, T. N., Doblas-Reyes, F. J., Weisheimer, A., and Rodwell, M. J.: Toward Seamless Prediction: Calibration of Climate Change Projections Using Seasonal Forecasts, *Bulletin of the American Meteorological Society*, 89, 459–470, <https://doi.org/10.1175/BAMS-89-4-459>, 2008.
- 675
- Pathak, J., Subramanian, S., Harrington, P., Raja, S., Chattopadhyay, A., Mardani, M., Kurth, T., Hall, D., Li, Z., and Azizzadenesheli, K.: Fourcastnet: A global data-driven high-resolution weather model using adaptive fourier neural operators, arXiv preprint arXiv:2202.11214, 2022.
- Peña, M. and Kalnay, E.: Separating fast and slow modes in coupled chaotic systems, *Nonlin. Processes Geophys.*, 11, 319–327, <https://doi.org/10.5194/npg-11-319-2004>, 2004.
- 680
- Penny, S., Kalnay, E., Carton, J., Hunt, B., Ide, K., Miyoshi, T., and Chepurin, G.: The local ensemble transform Kalman filter and the running-in-place algorithm applied to a global ocean general circulation model, *Nonlinear Processes in Geophysics*, 20, 1031–1046, 2013.
- Penny, S., Akella, S., Alves, O., Bishop, C., Buehner, M., Chevallier, M., Counillon, F., Draper, C., Frolov, S., and Fujii, Y.: Coupled Data Assimilation for Integrated Earth System Analysis and Prediction: Goals, Challenges and Recommendations. *World Meteorological Organization, WWRP 2017-3*, 50, URL [https://www.wmo.int/pages/prog/arep/wwrp/new/documents/Final\\_WWRP\\_2017\\_3\\_27\\_July.pdf](https://www.wmo.int/pages/prog/arep/wwrp/new/documents/Final_WWRP_2017_3_27_July.pdf).
- Penny, S. G.: Data assimilation of the global ocean using the 4D local ensemble transform Kalman Filter (4D-LETKF) and the Modular Ocean Model (MOM2), PhD Thesis, University of Maryland, 153 pp., 2011.
- 690
- Penny, S. G. and Hamill, T. M.: Coupled data assimilation for integrated earth system analysis and prediction, *Bulletin of the American Meteorological Society*, 98, ES169–ES172, 2017.
- Penny, S. G., Bach, E., Bhargava, K., Chang, C.-C., Da, C., Sun, L., and Yoshida, T.: Strongly Coupled Data Assimilation in Multiscale Media: Experiments Using a Quasi-Geostrophic Coupled Model, *Journal of Advances in Modeling Earth Systems*, 11, 1803–1829, <https://doi.org/10.1029/2019MS001652>, 2019.
- 695
- Pires, C., Vautard, R., and Talagrand, O.: On extending the limits of variational assimilation in nonlinear chaotic systems, *Tellus A*, 48, 96–121, <https://doi.org/10.1034/j.1600-0870.1996.00006.x>, 1996.
- Pitman, E. J. G.: Significance tests which may be applied to samples from any populations. II. The correlation coefficient test, *Supplement to the Journal of the Royal Statistical Society*, 4, 225–232, 1937.

- 700 Ruiz-Barradas, A., Kalnay, E., Peña, M., BozorgMagham, A. E., and Motesharrei, S.: Finding the driver of local ocean–  
atmosphere coupling in reanalyses and CMIP5 climate models, *Climate Dynamics*, 48, 2153–2172,  
<https://doi.org/10.1007/s00382-016-3197-1>, 2017.
- Saha, S., Nadiga, S., Thiaw, C., Wang, J., Wang, W., Zhang, Q., Van den Dool, H. M., Pan, H.-L., Moorthi, S., Behringer,  
705 D., Stokes, D., Peña, M., Lord, S., White, G., Ebisuzaki, W., Peng, P., and Xie, P.: The NCEP Climate Forecast  
System, *Journal of Climate*, 19, 3483–3517, <https://doi.org/10.1175/JCLI3812.1>, 2006.
- Saha, S., Moorthi, S., Pan, H.-L., Wu, X., Wang, J., Nadiga, S., Tripp, P., Kistler, R., Woollen, J., Behringer, D., Liu, H.,  
Stokes, D., Grumbine, R., Gayno, G., Wang, J., Hou, Y.-T., Chuang, H., Juang, H.-M. H., Sela, J., Iredell, M.,  
Treadon, R., Kleist, D., Van Delst, P., Keyser, D., Derber, J., Ek, M., Meng, J., Wei, H., Yang, R., Lord, S., van den  
710 Dool, H., Kumar, A., Wang, W., Long, C., Chelliah, M., Xue, Y., Huang, B., Schemm, J.-K., Ebisuzaki, W., Lin,  
R., Xie, P., Chen, M., Zhou, S., Higgins, W., Zou, C.-Z., Liu, Q., Chen, Y., Han, Y., Cucurull, L., Reynolds, R. W.,  
Rutledge, G., and Goldberg, M.: The NCEP Climate Forecast System Reanalysis, *Bulletin of the American  
Meteorological Society*, 91, 1015–1058, <https://doi.org/10.1175/2010AMS3001.1>, 2010.
- Singleton, T.: Data Assimilation Experiments with a Simple Coupled Ocean-Atmosphere Model, PhD Thesis, University of  
Maryland, 128 pp., 2011.
- 715 Sluka, T.: Strongly Coupled Ocean-Atmosphere Data Assimilation with the Local Ensemble Transform Kalman Filter,  
University of Maryland, 152 pp., 2018.
- Sluka, T. C., Penny, S. G., Kalnay, E., and Miyoshi, T.: Assimilating atmospheric observations into the ocean using strongly  
coupled ensemble data assimilation, *Geophysical Research Letters*, 43, 752–759,  
<https://doi.org/10.1002/2015GL067238>, 2016.
- 720 Smith, P. J., Fowler, A. M., and Lawless, A. S.: Exploring strategies for coupled 4D-Var data assimilation using an idealised  
atmosphere–ocean model, *Journal of Geophysical Research*, 120, 27025, <https://doi.org/10.3402/tellusa.v67.27025>, 2015.
- Smith, P. J., Lawless, A. S., and Nichols, N. K.: Estimating Forecast Error Covariances for Strongly Coupled Atmosphere–  
Ocean 4D-Var Data Assimilation, *Monthly Weather Review*, 145, 4011–4035, <https://doi.org/10.1175/MWR-D-16-0284.1>, 2017.
- 725 Smith, P. J., Lawless, A. S., and Nichols, N. K.: Treating Sample Covariances for Use in Strongly Coupled Atmosphere–  
Ocean Data Assimilation, *Geophysical Research Letters*, 45, 445–454, <https://doi.org/10.1002/2017GL075534>,  
2018.
- Smith, P. J., Lawless, A. S., and Nichols, N. K.: The role of cross-domain error correlations in strongly coupled 4D-Var  
atmosphere–ocean data assimilation, *Quarterly Journal of the Royal Meteorological Society*, 146, 2450–2465,  
730 <https://doi.org/10.1002/qj.3802>, 2020.

- Stammer, D., Ueyoshi, K., Köhl, A., Large, W. G., Josey, S. A., and Wunsch, C.: Estimating air-sea fluxes of heat, freshwater, and momentum through global ocean data assimilation, *Journal of Geophysical Research: Oceans*, 109, <https://doi.org/10.1029/2003JC002082>, 2004.
- Váňa, F., Düben, P., Lang, S., Palmer, T., Leutbecher, M., Salmond, D., and Carver, G.: Single Precision in Weather Forecasting Models: An Evaluation with the IFS, *Monthly Weather Review*, 145, 495–502, <https://doi.org/10.1175/MWR-D-16-0228.1>, 2017.
- 735
- Yang, S.-C., Kalnay, E., and Hunt, B.: Handling Nonlinearity in an Ensemble Kalman Filter: Experiments with the Three-Variable Lorenz Model, *Mon. Wea. Rev.*, 140, 2628–2646, <https://doi.org/10.1175/MWR-D-11-00313.1>, 2012.
- Yoshida, T.: Covariance Localization in Strongly Coupled Data Assimilation, PhD Thesis, University of Maryland, 218 pp., 2019.
- 740
- Yoshida, T. and Kalnay, E.: Correlation-Cutoff Method for Covariance Localization in Strongly Coupled Data Assimilation, *Monthly Weather Review*, 146, 2881–2889, <https://doi.org/10.1175/MWR-D-17-0365.1>, 2018.
- Zhang, S., Harrison, M. J., Wittenberg, A. T., Rosati, A., Anderson, J. L., and Balaji, V.: Initialization of an ENSO Forecast System Using a Parallelized Ensemble Filter, *Monthly Weather Review*, 133, 3176–3201, <https://doi.org/10.1175/MWR3024.1>, 2005.
- 745
- Zhang, S., Harrison, M. J., Rosati, A., and Wittenberg, A.: System Design and Evaluation of Coupled Ensemble Data Assimilation for Global Oceanic Climate Studies, *Monthly Weather Review*, 135, 3541–3564, <https://doi.org/10.1175/MWR3466.1>, 2007.
- Zhang, S., Liu, Z., Zhang, X., Wu, X., Han, G., Zhao, Y., Yu, X., Liu, C., Liu, Y., Wu, S., Lu, F., Li, M., and Deng, X.: Coupled data assimilation and parameter estimation in coupled ocean–atmosphere models: a review, *Climate Dynamics*, 54, 5127–5144, <https://doi.org/10.1007/s00382-020-05275-6>, 2020.
- 750