

Estimate of energy loss from internal solitary waves breaking on slopes

Kateryna Terletska¹, Vladimir Maderich¹, and Tatiana Talipova²

¹Institute of Mathematical Machine and System Problems, Glushkov av., 42, Kyiv 03187, Ukraine

²Institute of Applied Physics RAS, Nizhny Novgorod, Russian Federation

Correspondence to: Terletska K. (kterletska@gmail.com)

Abstract.

Internal solitary waves (ISWISWs) emerge in the ocean and seas in different-various forms and break on the shelf zones in a variety of ways. Their-breaking-on-slopes-can-produce-resulting-in intensive mixing that produces-such-process-affects-such processes as biological productivity and sediment transport. Mechanisms-of-As ISW of depression interaction-with-the-slopes related-to-breaking-and-changing-polarity-as-they-shoalpropagates in a two-layer ocean from the deep part onto a shelf two mechanisms are significant. The first is the breaking of internal waves over bottom topography when fluid velocities exceed wave phase speed that causes overturning of the rear face of the wave. The second is changing of polarity at the turning point where the depths of upper and lower layers are equal. We assume that parameters that described the process of interaction of ISW in a two-layer fluid with the idealised shelf-slope are: (i) the non-dimensional wave amplitude α (wave-amplitude, normalized on the upper layer thickness), (ii) the ratio of the height of the bottom layer on the shelf to the incident wave amplitude β and angle γ , and (iii) angle of bottom inclination. Based on a proposed three-dimensional $\alpha\beta\gamma$ -classification diagram-with-classification diagram four types of interaction-with-the-slopes-it-was-discussed: (1)-wave propagation over the slopes are distinguished: ISW propagates over slope without changing polarity and wave breaking; (2)-ISW changes polarity over slope without breaking; (3)-ISW breaks over slope without changing polarity; (4)-ISW both breaks and change-changes polarity over the slope. Relations-between-the-parameters α, β, γ for each regime were obtained using the empirical condition for wave breaking and weakly nonlinear theory for the criterion of changing the polarity of the wave. In the present paper the α, β, γ diagram was validated for idealised real-scale topography configurations. Results of the numerical experiments that were carried out in the present paper and results of field and laboratory experiments from other papers are in good agreement with proposed classification and estimations. Based-on-The energy loss during ISW transformation over slopes with a various angles was estimated using the results of 85 numerical experiments ISWs energy loss during interaction with slope topography with $0.5^\circ < \gamma < 90^\circ$ was estimated. “Hot spots” zones of high levels of energy loss were shown for idealized highlighted for idealized bottom configuration that mimics continental shelf at Lufeng Region SCS in the South China Sea.

Keywords. Internal solitary waves of depression, wave shoaling, energy loss

1 Introduction

One of the mechanisms of generation of the Observations demonstrate the evidence of internal solitary waves (ISWs) in the seas and oceans is the tidal flows over ridges and steep topography, where they transform quickly into coastal oceans and seas (Apel et al., 1995). It is generally accepted that one of the main causes for the occurrence of internal solitary waves during their propagation. The first mode internal solitary waves are most energetic and usually such waves propagating as waves of depressions when is barotropic tide interacting with the bottom topography (Maxworthy, 1979; Gerkema and Zimmerman, 1995)

Generated by tides ISWs of depression (the upper layer thickness is usually much less than the depth of the ocean. Generated by tides ISWs of depression) are the most energetic and can propagate thousands of kilometers from the origin (Kunze et al. (2012)) (Kunze et al., 2012). As the result, ISWs transport the energy far from the place location of their generation. Like surface waves, internal waves break in-at the coastal zone of the ocean. Such waves are an important components-component of mixing and energy dissipation (Liu et al. (1998), Davis et al. (2020)). Depending on the characteristics of the traveling ISW, ocean stratification and characteristics of in the ocean (Liu et al., 1998; Davis et al., 2020). The breaking of ISWs upon sloping boundaries in the coastal region also plays an important role in the diapycnal mixing (StLaurent et al., 2012), the continental slope wave on the shelf could be shoaling in different forms. ISW often reach extreme amplitudes, for example in the South China Sea (SCS) (Klymak et al. (2006)). They are well-known contributors to material transport, nutrient supply (Wang et al. (2007)). ISWs in SCS are generated by the interaction of internal tides and the system of two quasi-parallel ridges in the Luzon Strait (Alford et al. (2015)). Such waves could propagate at vast distances toward Dongsha Atoll mainly in the form of mode-1 internal solitary waves where they shoal and dissipate at the shallow continental shelf (Liu et al. (1998)). biological enhancement (Sangra et al., 2001; Wang et al., 2007), resuspension of bottom deposits (Pomar et al., 2012; Boegman and Stastna

During wave shoaling two mechanisms were expected to be essential The ISW's interaction behavior depends on the steepness of the topography and the characteristics of the solitary waves (Garrett and Kunze, 2007). If the slopes are smooth much of the energy scatters upslope onto a continental shelf where it will dissipate but for steeper slopes energy will reflect and return into the deep ocean (Klymak et al., 2010). It is important to understand the mechanisms of transformation of the ISWs at continental slopes and identify "hot spots" of wave energy dissipation. Two shoaling mechanisms can be important: (i) wave breaking resulting in mixing and (ii) changing of the polarity of the initial wave of depression over the slope into a wave of elevation on the shallow zone. The the conversion of the internal wave ISWs of depression into elevation waves in a two-layer stratification is expected if. When the thickness of the upper mixed layer is greater than one-half the total water depth (Helfrich and Melville (1986), Cheng et al. (2011)). (Helfrich and Melville, 1986; Cheng et al., 2011; Bai et al., 2021).

(ii) ISW breaking on the slope occurs when fluid velocities in the wave exceed wave phase speed. Leading to the overturning of the rear face of the wave, shear instability, and intensive mixing. Different types of the breaking locations breaking are commonly distinguished by slope inclination, water column stratification, and wave characteristics (Vlasenko and Hutter (2002) , Aghsaee et al. (2010), Boegman et al. (2005)). Assuming analogy with surface waves the breaking regimes of ISW in a two-layer fluid over slope were classified (Aghsaee et al., 2010; Boegman et al., 2005) into surging, plunging, collapsing, and fission. In these studies, classification of breaking is based on the Iribarren number a ratio of the slope to the square root

of the wave steepness (amplitude divided on the wavelength). This criterion was modified by (Nakayama et al., 2019) for collapsing and plunging breakers using of a new wave Reynolds number that takes into account nonlinear wave steepening. A simple three-dimensional $\alpha\beta\gamma$ classification diagram was proposed by (Terletska et al. (2020)) Terletska et al. (2020) to distinguish different regimes of transformation of ISW over the shelf-slope topography. It interactions of ISW with the slope-shelf topography. The classification is based on three parameters: the slope angle γ , the non-dimensional wave amplitude α (wave amplitude normalized on the upper layer thickness), and the blocking parameter β that is the ratio of the height of the bottom layer on the shelf to the incident wave amplitude.

ISWs breaking over slopes were observed in many coastal locations over the globe (New and Pingree, 1990; Alford et al., 2015; Vlasenko, 2016). Observational studies have shown that amplitudes of depression ISWs in the South China Sea (SCS) could reach extreme values up to two hundred and more meters (Huang et al., 2016; Ramp et al., 2010; Klymak et al., 2010). Based on the analysis of satellite images (Wang et al., 2013; Jackson, 2004) it was found that in the northeastern South China Sea most internal waves are generated at the Luzon Strait. Further, solitary waves propagate westward and then they diffracted around the Dongsha Islands. In the shallow water regions of the northern SCS, changes in water depth may cause polarity conversion, leading to the transformation of depression ISW to elevation ISWs (Liu et al., 1998). Orr and Mignerey (2003) showed that the kinetic energy of ISWs decreased three times, after changing polarity, Zhang et al. (2018) showed that the seasonal variations in stratification cause these seasonal variations in polarity. The present study focused on the ISWs transformation over an idealised shelf-slope topography with a two-layer stratification. The objectives are to: (1) compare $\alpha\beta\gamma$ to compare $\alpha\beta\gamma$ classification with the results of numerical modelling, laboratory studies, and field observations, (2) find to identify high energy dissipation zones of ISWs passed over the shelf-slope topography based on regimes classification that includes such parameters as wave amplitude, stratification and slope, using the $\alpha\beta\gamma$ classification (3) for to apply $\alpha\beta\gamma$ classification carry out numerical modeling for idealized configuration that mimics to the results of numerical modelling that mimics ISW transformation over a continental shelf at Lufeng Region SCS, (4) and to determine energy loss in result of the transformation of ISWs with over the shelf-slope topography.

Information about polarity change criteria and criteria of breaking in $\alpha\beta\gamma$ classification of regimes of ISWs transformation over shelf topography is presented in the corresponding Section - Section 2. The overview of field and laboratory measurement data and their comparison with the numerical modelling data are in Section "Data and methods", given in Section 3. Dissipation of energy of ISWs breaking over shelf topography discussed in Section "Estimate of energy loss in internal waves breaking on slopes". is considered in Section 4. The results are summarized in the Conclusions.

2 Regimes of ISW transformation over slope-shelf topography

The A two-layer approximation is a simple model of the stably stratified oceans and lakes. In this model, we approximated stratification by the two continuous layers of depths h_1 (upper layer) and h_2 (lower layer) with relatively thin pycnocline. In the case when $h_1 > h_2$ internal solitary waves propagate in the form of elevation ISW, and if $h_1 < h_2$ they propagate in the form of the waves of depression. In this study we will, we consider ISW of depression (with amplitude a_{in}) propagating

over an idealized slope-shelf with a slope γ and the minimum depth of the lower layer over the shelf h_{2+} . Idealised shelf-slope topography is shown in Fig. 1 b, ~~and whereas~~ the idealised configuration that mimics continental shelf at Lufeng Region (Fig. 1 a) SCS is shown in Fig. 1 c .

~~Sketch of transformation of depression ISW over a slope-shelf. (a) — Idealised topography at Lufeng Region (SCS), (b)~~
5 ~~sketch of breaking and changing the polarity of ISW of depression after passing through a turning point.~~

~~It could be assumed that transformation on~~ It was assumed that ISW transformation over a slope is controlled by stratification, slope inclination and amplitudes (wavelength) of the incident wave (Terletska et al. (2020)). ~~They determine two~~ Two possibilities that could occur with the wave during shoaling were determined: (i) ISW breaking, ~~that is which was~~ associated with gravitational instability due to ~~shear instability and the~~ wave overturning and shear instability, and (ii) ~~depression-type~~
10 ~~ISW changing the~~ changing ISW polarity on the slope. ~~There are different breakers behaviour of ISW in a two-layer fluid over slope were classified by (Aghsaee et al. (2010), Boegman et al. (2005)) into four types: surging, plunging, collapsing, and fission. Classification is based on the ratio of the wave slope and the bottom slope, and was modified for collapsing and plunging breakers with the use of new wave Reynolds number that taking into account nonlinear wave steepening Nakayama et al. (2019)~~

~~—~~
15 ~~According the (Terletska et al. (2020)) three~~
Three parameters α β γ can be important for behaviour of the incident wave on slope-shelf (fig. 1 b,c):

1. ~~slope~~ Slope inclination γ (measured as an angle);
2. ~~blocking~~ Blocking parameter β that is the ratio of the height of the minimum depth of the lower layer over the shelf h_{2+} (Fig. 1 b,c) to the incident wave amplitude a_{in}

$$20 \quad \beta = h_{2+}/|a_{in}|. \quad (1)$$

~~This idea~~

3. Nonlinearity parameter that is the ratio of the incident wave amplitude to the depth of upper layer:

$$\alpha = |a_{in}|/h_1. \quad (2)$$

The idea for blocking parameter β comes from numerical and laboratory experiments as the "degree of blocking" ~~that, which~~
25 is an important parameter that ~~controls~~ controlling the loss of energy into transmitted and reflected waves passing the obstacle (Vlasenko and Hutter (2002), Wessels and Hutter (1996)). ~~Parameter β was modified in (Talipova et al. (2013)) where considered~~ (Vlasenko and Hutter, 2002; Wessels and Hutter, 1996). Parameter β was modified by Talipova et al. (2013) where ISWs (as depression and elevation type) passing over underwater step ($\gamma = 90^\circ$) were considered. It was shown that for the ~~case of~~ ISW of depression ~~for values $\beta > 3$ the ISW~~ transformation over underwater step is weak for values $\beta > 3$
30 (when the dynamics of ISW could be described by weakly nonlinear theory), for $2 < \beta < 3$ interaction is moderate (when the main mechanism for ISW breaking over bottom step produce shear instability), ~~for~~. For $0.4 < \beta < 2$ the interaction is strong

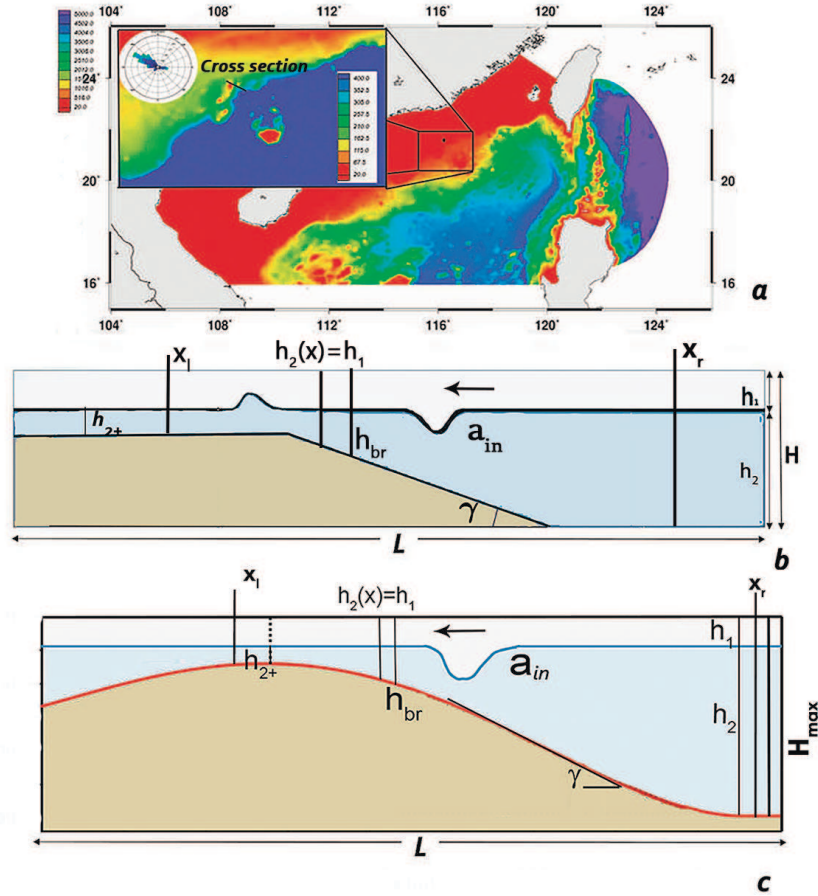


Figure 1. Sketch of transformation of depression ISW over a slope-shelf. (a) - SCS with Lufeng Region, (b) sketch of breaking and changing the polarity of ISW of depression after passing through a turning point, (c) - Idealised topography at Lufeng Region (SCS).

with maximal energy loss (when ISW produced the flow that results in a jets and vortices). The interaction in the range $-0.9 < \beta < 0.4$ so-called was called 'transitional regime' when the step height between strong interaction and full reflection from the step and whereas for $\beta < -0.9$ full reflection from the underwater step. nonlinearity parameter that is the ratio of the incident wave amplitude to the depth of upper layer:-

5 $\alpha = |a_{in}|/h_1.$

takes place.

Internal waves in a framework of weakly nonlinear theory change their polarity in the point where the upper and lower layers are equal (Grimshaw et al. (2004))(Grimshaw et al., 2004). Notice that numerical experiments using full Naiver-Stokes equations (Maderich et al. (2010))(Maderich et al., 2010) confirm the applicability of the Gardner equation to predict turning

Table 1. Parameters α β γ of ISW in numerical, laboratory experiments and field observations

Location	zone	α	β	γ
Celtic Sea(Vlasenko et al., 2014)	3	0.8 – 3.3	1.4	3°
Bay of Biscay(New and Pingree, 1990)	1, 3	1 – 2	0.8 – 1.5	4.5°
Andaman Sea(Osborn et al., 1980)	0.75 – 1	0.16	1	0.33° – 1.5°
Oregon shelf(Moum et al., 2003)	1	0.85	4.3	0.3°
South China Sea(Orr and Mignerey, 2003)	1	0.8, 1.55	1.1	1°
South China Sea (Dongsha Atoll)(Fu et al., 2016)	4	1.25	0.2	3°
Huntington Beach(Nam and Send, 2010)	1, 3, 4	0.83	1.28	0.23°
East sea(Navrotsky et al., 2004)	2	0.5	1	0.1°
St. Lawrence Estuary(Bourgault et al., 2007)	4	1	0	3°
Laboratory(Helfrich and Melville, 1986)	1, 4	0.12 – 0.18	0.2 – 5	4°
Laboratory(Chen, 2007)	2, 4	0.2 – 0.7	0.4	14°
Numerical experiments(Talipova et al., 2013)	1 – 4	0.2 – 2.2	–2 – 8	90°
Numerical experiments(Aghsaee et al., 2010)	4	0.2 – 2	0	0.5° – 17°
Numerical experiments(Terletska et al., 2020)	1 – 4	0.25 – 1.5	0 – 2.5	0.5° – 90°

point $h_1 = h_2$ even for the wave of large amplitude. This relation for turning point can be expressed through parameters and using

$$\beta = 1/\alpha. \quad (3)$$

For breaking point criteria was taken criterion ~~from proposed by~~ Vlasenko and Hutter (2002). It was ~~build-built~~ based on the 5 ~~Naiver~~Navier–Stokes numerical model simulations data. It was found that the ratio of the amplitude of the incident wave a_{in} into the value of the undisturbed thickness of the lower layer in point where the wave breaking takes place h_{br} (Fig. 1 b,c), is the function of the slope γ :

$$\frac{|a_{in}|}{h_{br}} = \frac{0.8^\circ}{\gamma} + 0.4. \quad (4)$$

For each slope angle γ the blocking parameter value β_{br} that divide zone of ~~the~~ non-breaking regime for $\beta > \beta_{br}$ and 10 breaking regime for $\beta < \beta_{br}$ can be found from (3) and (4) at $h_{2+} = h_{br}$ that

$$\beta_{br} = \gamma / (0.8^\circ + 0.4\gamma). \quad (5)$$

We can also obtain value α_{br} that divide zone 4 on breaking regime when ISW first breaks $\alpha > \alpha_{br}$ and when wave first ~~change~~changes polarity and then breaks $\alpha < \alpha_{br}$. It can be found from(3) using (5) that yields

$$\alpha_{br} = (0.8^\circ + 0.4\gamma)/\gamma. \quad (6)$$

Thus four different scenarios of internal solitary wave interaction ~~of~~ with a shelf-slope topography in a ~~two-layer~~two-layer approximation can be realized: (1) ~~breaking regime over the slope shelf; non-breaking regime without changing polarity~~, (2) ~~non-breaking regime over the slope shelf~~with changing polarity, (3) ~~polarity change regime and breaking regime without changing polarity~~, (4) ~~regime of non-polarity change~~- breaking regime with changing polarity.

Analysing equations (3) (5) we conclude that parameters α, β, γ control the processes ~~as for both~~ the wave breaking ~~as and~~ the wave polarity change. A three-dimensional diagram with the dependence on parameters α, β, γ ($\alpha\beta\gamma$ diagram) is ~~introduced~~ given in Fig. 2 ~~with showing~~ four zones: (zone 1) ISWs transform without changing polarity and wave breaking; (zone 2) ISWs transform with changing polarity without breaking; (zone 3) ISWs break without changing polarity; (zone 4) ISWs break with changing polarity. In the space of α, β, γ these regimes are separated by the surfaces (3) and (5).

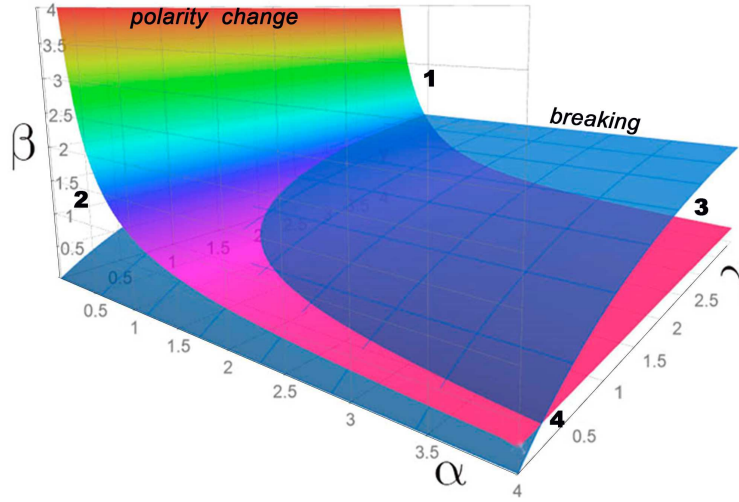


Figure 2. ~~3D~~Three-dimensional α, β, γ diagram of regimes (zone 1) without changing polarity and wave breaking, (zone 2) - changing polarity without breaking, (zone 3) regime of wave breaking without changing polarity, (zone 4) - breaking with changing polarity.

To compare the $\alpha\beta\gamma$ diagram versus the data from field observations, the results of laboratory measurements and numerical simulations were analysed by (~~Terletska et al. (2020)~~) for different slopes $\gamma = 1^\circ, 1.5^\circ, 3, 14^\circ, 60^\circ, 90^\circ$. Terletska et al. (2020).
15 They are presented in Table 1.

~~In~~ (~~Terletska et al. (2020)~~) ~~was shown~~ Terletska et al. (2020) showed that results of field observations (~~Moum et al. (2003); Osborn et al. (1980); Orr and Mignerey (2003); Nam and Send (2010); Fu et al. (2016)~~), laboratory experiments (~~Helfrich and Melville (19~~

Table 2. Parameters of ISW in numerical experiments for idealised Lufeng Region in SCS

$ a_{in} (\text{m})$	<i>zone</i>	α	β	γ
20	<u>2,4</u>	0.4	1	$1^\circ, 3^\circ, 5^\circ$
50	<u>4</u>	1	0.4	$1^\circ, 3^\circ, 5^\circ$
100	<u>3,4</u>	2	0.2	$1^\circ, 3^\circ, 5^\circ$

~~Cheng et al. (2011)~~ (Moum et al., 2003; Vlasenko et al., 2014; New and Pingree, 1990; Navrotsky et al., 2004; Osborn et al., 1980; Orr et al., 2003; Talipova et al., 2013; Terletska et al., 2020) laboratory experiments (Helfrich and Melville, 1986; Cheng et al., 2011) and numerical experiments that simulate ISW transformation in laboratory scales (~~Talipova et al. (2013), Terletska et al. (2020)~~) (Talipova et al., 2013; Terletska et al., 2020) are in good agreement with the proposed classification. All data were identified as ~~belonged to~~ belonging to the corresponding diagram domain.

3 Data and methods

Let us consider the transformation of the ISWs in the case of idealised topography and stratification that approximately follows ~~cross section in~~ cross-section in the Lufeng Region in SCS. ~~Position of the cross-section~~ The position of the cross-section is shown in Fig. 1 a. Data indicates (~~Ramp et al. (2010)~~) (Ramp et al., 2010; Wang et al., 2013; Jackson, 2004) that internal waves from the Luzon strait propagate westward to Dongsha Islands and further to Lufeng Region, and the measured current in waves is about 1.5 – 2.0 m/s. Wave amplitudes obtained using SAR images (during May after strong thermocline developing in April) ~~on the depth at the depth of~~ about 300 m vary from 10 to 50 m with the depth of thermocline about 40 – 65 m (~~?~~) (Meng and Zhang, 2003). For numerical modeling of the idealised case that mimics Lufeng Region computational domain with the length $L = 18$ km, and maximal depth $H_{max} = 300$ m was considered (Fig. 1 a). We approximated stratification in the Lufeng Region by the two-layer density profile. The densities of the layers are ρ_1 and ρ_2 (depths h_1 and h_2 and $H = h_1 + h_2$.) and the pycnocline layer thickness dh :

$$\rho(z) = \frac{\rho_1 + \rho_2}{2} - \frac{\rho_1 - \rho_2}{2} \tanh\left(\frac{z - h_1}{dh}\right). \quad (7)$$

In numerical experiments we vary waves amplitudes $|a_{in}|$: $|a_{in}| = 20$ m, $|a_{in}| = 50$ m, $|a_{in}| = 100$ and slopes γ : $\gamma = 1^\circ$, $\gamma = 3^\circ$, $\gamma = 5^\circ$. Slope inclination γ for smooth curvilinear slope is measured as the maximal slope value. Corresponding values of α, β, γ are given in the table ~~1-2~~ 2. Density $\rho_1 = 1021.5$ and $\rho_2 = 1025.5$ (kg/m^3) and the pycnocline layer thickness $dh = 15$ m. The flux of salinity through the flume boundaries is also set to zero. Density profile from measurements from SCS (May) (Orr and Mignerey (2003)) and initial density profile (7) are shown in Fig. 3. Depths layers are $h_1 = 50$ m and $h_2 = 250$ m for all runs.

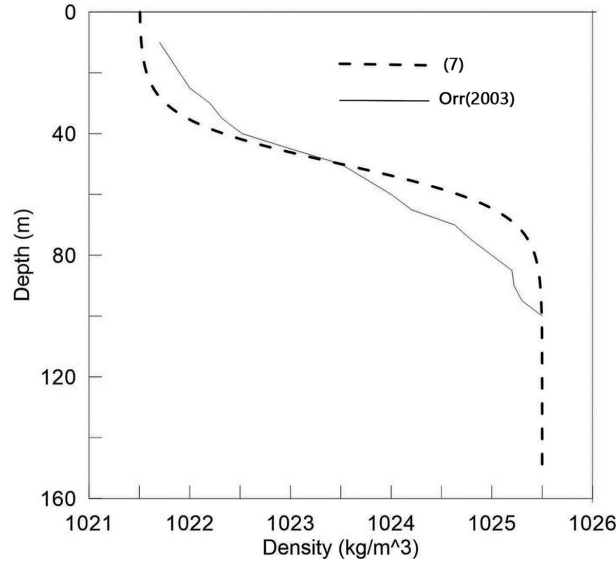


Figure 3. Density profile from measurements from SCS (May) (Orr and Mignerey (2003)) and initial density profile (7) used for numerical calculations

The numerical simulations were carried out using the free-surface non-hydrostatic numerical model [Kanarska and Maderich \(2003\)](#), [Maderich et al. \(2012\)](#) as a nonhydrostatic extension of the Princeton Ocean Model (POM) ([Kanarska and Maderich, 2003](#); [Maderich et al.](#)). The Smagorinsky model extended for the stratified fluid ([Siegel and Domaradzki \(1994\)](#)) ([Siegel and Domaradzki, 1994](#)) was used to explicitly describe the small-scale turbulent mixing and dissipation effects in the ocean scale [NLSWISW](#). Totally 9 (three γ and three α) runs ~~with resolution of the computational domain 42002504~~ were carried out for all cases. Spatial resolution was 4.31.21.2 m for all cases. Bottom following, the sigma coordinate vertical system was used in the present modeling. The quasi-two-dimensional model with a resolution of 4 nodes across the wave tank [with the resolution 4200250 nodes](#) was used for present calculations. No-slip boundary conditions were applied at the bottom and two end walls. The free-slip conditions were applied at the side walls. Mode-splitting technique and decomposition of pressure and velocity fields on hydrostatic and nonhydrostatic components were used in the numerical method and it is described in detail in ~~(Maderich et al. (2012))~~ ([Maderich et al., 2012](#)).

The model was initialized using iterative solution the Dubreil-Jacotin-Long (DJL) (~~Dubreil-Jacotin (1932))~~ ([Dubreil-Jacotin, 1932](#)) equation with the initial guess obtained from a weakly nonlinear theory. The DJLES spectral solver from the MATLAB package <https://github.com/mdunphy/DJLES/> was used. ~~In Fig. 4 is shown~~ The transformation of ISW with initial amplitude $|a_{in}| = 50$ m ~~is shown in Fig. 4.~~ The minimum depth of the lower layer over the shelf is $h_{2+} = 20$ m and the slope is $\gamma = 1^\circ$. The parameters are $\alpha = 1$, $\beta = 0.4$, $\gamma = 1^\circ$, that corresponds to regime of breaking with changing polarity. ISW's propagation velocity is about 1.2 m/s that is typical for Lufeng Region in SCS ~~(?)~~ ([Meng and Zhang, 2003](#)). From (3) and (4) we could ~~found find~~ the location on the slope where ISW will change polarity $h_{2+} = h_1 = 50$ m and ISW breaking at the place where $h_{br} \approx 40$ m.

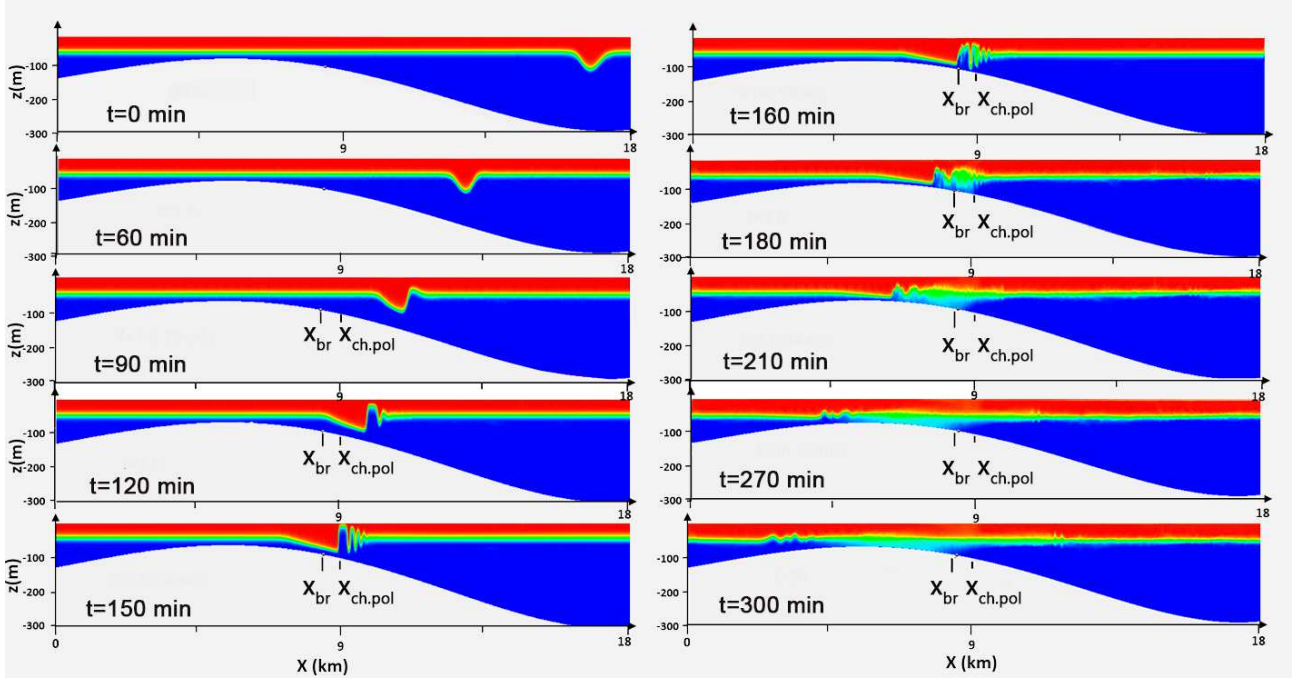


Figure 4. The evolution of the ISW with $|a_{in}| = 50$ m in cross-sections at time $t = 0; 60; 90; 120; 150; 160; 180; 210; 270; 300$ min ($\gamma = 1^\circ$, $\alpha = 1$, $\beta = 0.4$). x_{br} and $x_{ch.pol}$ - are the points of breaking and changing polarity.

It could be seen from Fig. 4 that ISW $|a_{in}| = 50$ m at first changes its polarity at time $t = 2$ h 30 min and then breaks at the slope at $t = 2$ h 40 min.

In Fig. 5-4 a 3D diagram of regimes with the cross-section $\alpha\beta$ for $\gamma = 1^\circ$ is shown. In the Fig. 5 b red line corresponds to the polarity change criterion (3) whereas the black line corresponds to the breaking criterion (5). Three experiments exp.1: $\alpha = 0.4, \beta = 1, \gamma = 1^\circ$; exp.2: $\alpha = 1, \beta = 0.4, \gamma = 1^\circ$; exp.3.: $\alpha = 2, \beta = 0.2, \gamma = 1^\circ$ are marked. The first one exp.1 represents the cases of interaction of ISW ($|a_{in}| = 50$ m) with polarity change but without breaking. Exp.2 represents the case when the first ISW changes its polarity from depression to elevation types and then breaks 4. Exp.3 is the case when ISW brakes-breaks on the slope before it pass the changing polarity point.

4 Estimate of energy loss in internal waves breaking on slopes

- 10 An important characteristic of the wave-slope interaction is the loss of kinetic and available potential energy during the transformation. Energy transformation due to mixing leads to the transition energy to background potential energy and to the energy dissipation. It can be estimated based on the budget of the wave energy before and after the transformation.

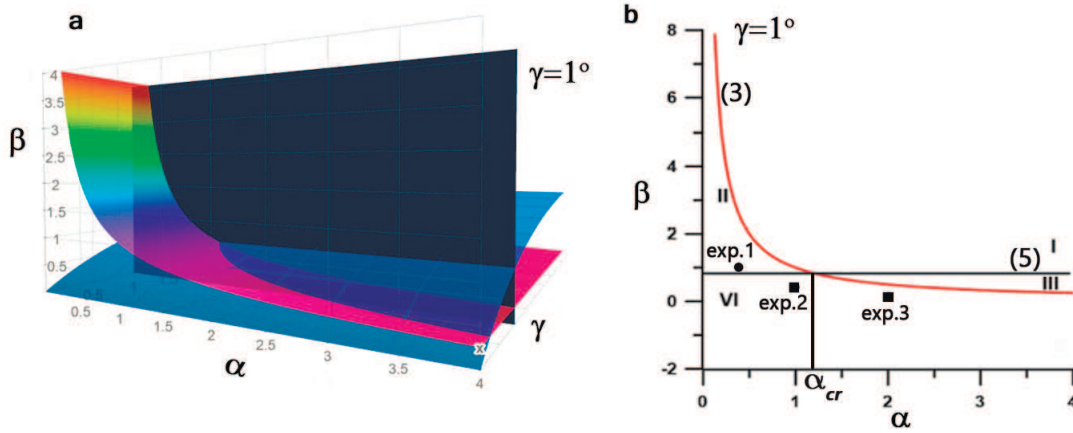


Figure 5. 3D diagram of regimes with the cross-section $\alpha\beta$ for $\gamma = 1^\circ$. The red line corresponds to polarity change criterion (3), black line corresponds to breaking criterion (5). The circles are changing polarity without breaking cases, squares mark cases of changing polarity with breaking.

It was carried out calculating of energy dissipation for two configurations - for ~~real-scale~~ real-scale experiment for idealised Lufeng Region in SCS and ~~laboratory-scale~~ laboratory-scale experiment with the trapezoid shelf-slope configurations (~~Terletska et al. (2020)~~) (Terletska et al., 2020). Parameters of ISW in numerical experiments of ~~laboratory-scale experiments~~ (~~from (Terletska et al. (2020))~~) laboratory-scale experiments by Terletska et al. (2020) are given in ~~table 2~~ Table 3.

- 5 The characteristics of the incoming and reflected wave were recorded in the cross-sections x_r , which are located near the foot of the slope, and the wave passing on the shelf, in the cross-section x_l (Fig. 1 b,c). ~~The~~

Energy loss by breaking waves was estimated following Lamb (2007) and Maderich et al. (2010) from the budget of depth-integrated pseudoenergy. To find the balance of the total energy we have calculated the total energy of the incident, reflected, and transmitted waves before slope and on the plateau by using the depth-integrated pseudoenergy flux $F(x, t)$

$$10 \quad F(x, t) = \int_{-H}^0 (E_{PSE} + p) U dz, \quad (8)$$

where p is pressure disturbance due to passing wave and U is the horizontal velocities. Where E_{PSE} is the pseudoenergy density, which is a sum of kinetic energy density E_k and available potential ~~that is the pseudoenergy energy was calculated by integration in time of the energy fluxes of these waves at the sections x_l (of transmitted waves) x_r (of incident and reflected waves).~~ The detailed method of estimation of available potential energy was discussed in (Talipova et al. (2013)).

- 15 ~~The~~ density E_a (part of the potential energy available for conversion into kinetic energy). For calculation of E_a we used reference density profile that was obtained by an adiabatic rearranging of the density field. Then volume integration of these

Table 3. Parameters of ISW in numerical experiments of laboratory scale [Terletska et al. (2020)].

$ a_{in} (\text{m})$	<u>zones</u>	α	β	γ
0.02	<u>2,4</u>	0.25	0,1,2.5	$0.5^\circ, 1.5^\circ, 60^\circ, 90^\circ$
0.08	<u>1,3,4</u>	1	0.3, 1.1, 2.2	$0.5^\circ, 1.5^\circ, 60^\circ, 90^\circ$
0.15	<u>1,3,4</u>	1.5	0,1.5,2.5	$0.5^\circ, 1.5^\circ, 60^\circ, 90^\circ$
0.15	<u>1,4</u>	1.5	0.58,0.8,1.41	1.5°

flows outside the mixing zone allows us to estimate the energy of the incoming PSE_{in} , reflected PSE_{ref} , and transmitted on the plateau PSE_{tr} waves, where

$$\begin{aligned} PSE_{in} &= \int_{x_r}^L \int_{-H}^0 E_{PSE} dz dx = - \int_{t_1}^{t_2} F(x_r, t) dt, \\ PSE_{tr} &= \int_0^{x_l} \int_{-H}^0 E_{PSE} dz dx = - \int_{t_3}^{t_4} F(x_l, t) dt, \\ PSE_{ref} &= \int_{x_l}^L \int_{-H}^0 E_{PSE} dz dx = \int_{t_5}^{t_6} F(x_r, t) dt, \end{aligned} \quad (9)$$

where $t_1, t_2, t_3, t_4, t_5, t_6$ are time intervals when incoming, reflected, and transmitted waves passe the given cross-section.

5 Then the relative estimation of the energy loss δE_{loss} is given by

$$\delta E_{loss} = (PSE_{in} - PSE_{tr} - PSE_{ref}) / PSE_{in}. \quad (10)$$

where PSE_{in} - is pseudoenergy of the incident wave, PSE_{tr} and PSE_{ref} - is pseudoenergy of transmitted and incident ones respectively. The energy loss for mixing during the interaction of the wave with the slope of $\delta E_{loss}(\%)$ from the blocking parameter β is shown in fig. 6 a. This field of values $\gamma\beta$ is built by 39 numerical experiments described in table 23, 37 numerical experiments from (Talipova et al. (2013)) Talipova et al. (2013) for $\gamma = 90^\circ$ and 9 experiments from the present study. δE_{loss} was estimated for the wide the range of slopes $0.5^\circ < \gamma < 90^\circ$ and blocking parameters $-2 < \beta < 8$. ISW energy loss for limiting case of underwater step when $\gamma = 90^\circ$ was compared with the results of laboratory experiments (Wessels and Hutter (1996)) and (Chen (2007)) 6 b by Wessels and Hutter (1996) and Chen (2007) (fig. 6 b). It can be seen that interaction-wave transformation in zone 4 is the most dissipative. With this type of interaction transformation, energy losses reach up to 55%. For slopes from $5^\circ < \gamma < 90^\circ$ dependence of the energy dissipation from the blocking parameter β has almost the same pick shape as in the limiting case $\gamma = 90^\circ$. For mild slopes γ we will expect expect an increase of dissipation for all range of blocking parameter values β .

We can compare the energy dissipation for real scale experiment with the laboratory scale experiment with a close values of α and β for slope $\gamma \approx 1$. Consider the cases with $\alpha = 1$ and $\beta = 0.4$ for slope $\gamma = 1^\circ$ (real scale from table 42) and $\alpha = 1$ and $\beta = 0.3$ for slope $\gamma = 1.5^\circ$ (laboratory scale experiments table 23) (zone 4 - wave breaking regime with polarity change). For strong mixing the difference is about 5% $\delta E_{loss_{rs}} = 62\%$, $\delta E_{loss_{ls}} = 57\%$.

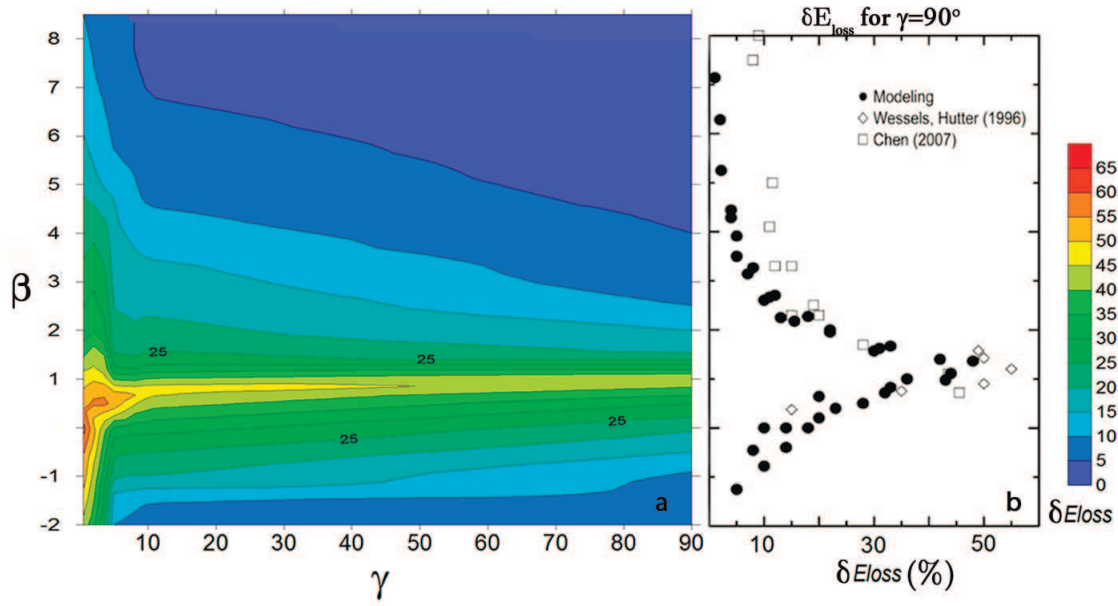


Figure 6. Energy loss δE_{loss} in internal waves breaking on slopes for γ from 0.5° to 90° . For limiting case $\gamma = 90^\circ$ it corresponds to the numerical experiments Talipova et al. (2013) and the results of laboratory experiments Wessels and Hutter (1996) and Chen (2007) with steep obstacles.

To build a zone map for the shelf zone the direction of propagation of internal waves ~~is necessary. It,~~ amplitude of incoming wave and stratification should be defined. They could be found using the approach for estimating the geographic location of high-frequency nonlinear internal waves from ~~(Jackson et al. (2012))~~ (Jackson et al., 2012), amplitudes of the incoming internal waves, the depth of the mixed layer. Fig. 7 shows an example of a map with zones corresponding to the different regimes of interaction described above. These maps were constructed for the case of internal waves with an amplitude of $a_{in} = 50$ m and a mixed layer depth $h_1 = 50$ ~~(?)~~ (Meng and Zhang, 2003). On this map the black line ~~—~~ is isobath 120 m (shelf), the violet line is polarity change curve $h_1 = h_2$ and the red area ~~—~~ is the zone of internal wave breaking where $h_1 + h_{br} > H$.

5 Conclusions

A three-dimensional $\alpha\beta\gamma$ classification diagram ~~with describing~~ four types of interaction of ISWs with the slopes ~~was is~~ discussed. Relations between the parameters α, β, γ for each regime were obtained using the empirical ~~condition~~ relation for wave breaking condition and weakly nonlinear theory for the criterion of changing the polarity of the wave. The distinguished regimes are: (1) ISW propagates over slope without changing polarity and wave breaking; (2) ISW changes polarity over slope without breaking; (3) ISW breaks over slope but without changing polarity; (4) ISW both breaks and change polarity over a slope. The diagram ~~was is~~ validated for realistic topography configurations. Numerical modeling of the idealized configuration

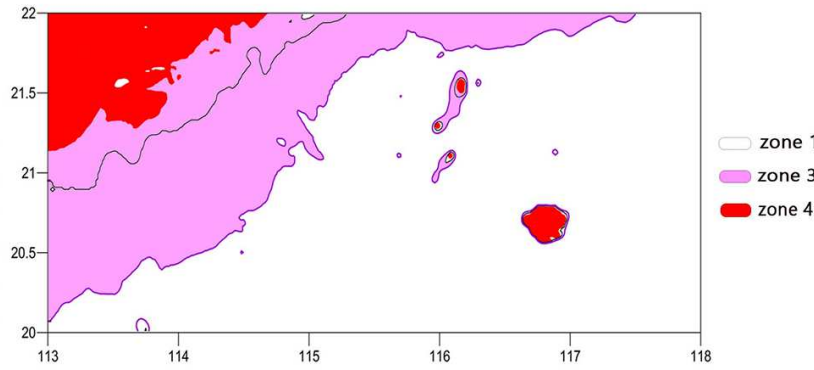


Figure 7. Zone map for internal waves transformation over South China Sea shelf with an initial amplitude of 50 m and a depth of the mixed layer ~~50~~50 m.

that mimics the continental shelf at Lufeng Region SCS ~~was~~is carried out. Results numerical experiments that ~~were~~are carried out in the present paper and other laboratory experiments are in good agreement with the proposed classification and estimations. Based on present numerical experiments internal solitary loss of wave energy from ~~interaction with~~transformation over the slope topography ~~was~~is estimated. We concluded that the results of field, laboratory, and numerical experiments are in good agreement with the proposed classification which can be used for the identification of ‘hot spots’ of energy dissipation in the ocean.

Code and data availability. The output files for all numerical experiments reported in the paper are available from the corresponding author.

Author contributions. KT and VM conceived the idea, KT carried out numerical simulations, contributed to the design of figures and participated in the writing of the manuscript. TT commented on the writing of the manuscript contributed large parts of the manuscript organization and interpretation of the results. VM contributed to writing the manuscript and interpretation the results.

Competing interests. The authors declare that they have no conflict of interest.

Acknowledgements. This work ~~was partially supported Russian Foundation~~is partially supported for TT by the Russian Science Foundation (grant No 19-12-00253, Section 2, discussion and interpretation results) and the Russian Foundation of Basic Research (grant No 19-05-00161)~~(TF)~~, total edition

References

- Apel, J. R., Ostrovsky, L. A., Stepanyants, Y. A.: Internal solitons in the ocean, *The Journal of the Acoustical Society of America*, 98, 2863, doi:<https://doi.org/10.1121/1.414338>, 1995.
- Maxworthy, T.: A note on the internal solitary waves produced by tidal flow over a three-dimensional ridge, *Journal of Geophysical Research* 5, 84, 0148-0227, doi: 10.1029/JC084iC01p00338, 1979.
- Gerkema, T. and Zimmerman, J. T. F.: Generation of Nonlinear Internal Tides and Solitary Waves, *The Journal of Physical Oceanography*, 25 (6), 1081–1094 , [https://doi.org/10.1175/1520-0485\(1995\)025<1081:GONITA>2.0.CO;2](https://doi.org/10.1175/1520-0485(1995)025<1081:GONITA>2.0.CO;2), 1995.
- Kunze, E., MacKay, C., McPhee-Shaw, E. E., Morrice, K., Girton, J. B., and Terker, S. R.: Turbulent mixing and exchange with interior waters on sloping boundaries, *The Journal of Physical Oceanography*, 42(12), 910–927 , doi: 10.1175/JPO-D-11-075.1, 2012.
- 10 Liu, A. K., Chang, S. Y., Hsu, M.-K. and Liang, N. K.: Evolution of nonlinear internal waves in the East and South China Seas, *Journal of Geophysical Research*, 103, 7995-8008, 1998.
- Davis, K.A., Arthur, R.S., Reid, E.C., Rogers, J.S., Fringer, O. B. , DeCarlo, T. M., Cohen, A.L.: Fate of Internal Waves on a Shallow Shelf, *Journal of Geophysical Research*, 521, 65-69, <https://doi.org/10.1029/2019JC015377>, 2020.
- St. Laurent, L.C., Garabato, A.C.N., Ledwell, J.R., Thurnherr, A.M., Toole, J.M., Watson, A.J.: Turbulence and diapycnal mixing in Drake 15 Passage, *The Journal of Physical Oceanography*, 42(12), 2143–2152 , <https://doi.org/10.1175/JPO-D-12-027.1>, 2012.
- Sangrà, P., Basterretxea, G., Pelegrí, J. L., Aristegui, J.: Chlorophyll increase due to internal waves in the shelf-break of Gran Canaria Island (Canary Islands), *Scientia Marina*, 65(S1), DOI: 10.3989/scimar.2001.65s189, 2001.
- Wang, Y. H., Dai, C. F., Chen, Y. Y.: Physical and ecological processes of internal waves on an isolated reef ecosystem in the South China Sea, *Geophysical Research Letters*, 34, 1–7, 2007.
- 20 Pomar, L. Morsilli, M., Hallock, P., Badenas, B.: Internal waves, an under-explored source of turbulence events in the sedimentary record , *Earth-Science Reviews*, 111 (1-2), 56-81 , <https://doi.org/10.1016/j.earscirev.2011.12.005>, 2012.
- Boegman, L. and Stastna, M.: Sediment Resuspension and Transport by Internal Solitary Waves, *Annual Review of Fluid Mechanics* 51:129-154, <https://doi.org/10.1146/annurev-fluid-122316-045049>, 2019.
- Garrett, C. and Kunze, E.: Internal Tide Generation in the Deep Ocean, *Annual Review of Fluid Mechanics*, 39:57-87, 25 <https://doi.org/10.1146/annurev.fluid.39.050905.110227>, 2007.
- Klymak, J.M., Legg, S. Pinkel, R.: A simple parameterization of turbulent tidal mixing near supercritical topography, *Journal of physical oceanography*, 40 (9), 2059-2074, <https://doi.org/10.1175/2010JPO4396.1>, 2010.
- Helfrich, K. R., Melville, W. K.: On long nonlinear internal waves over slope-shelf topography, *Journal of Fluid Mechanics*, 167, 285-308, 1986.
- 30 Chen, C.-Y.: An experimental study of stratified mixing caused by internal solitary waves in a two-layered fluid system over variable seabed topography, *Ocean Engineering*, 34 1995–2008, DOI: 10.1016/j.oceaneng.2007.02.014, 2007.
- Bai, X., Lamb, K., Xu, J., Liu, Zh: On Tidal Modulation of the Evolution of Internal Solitary-Like Waves Passing Through a Critical Point, *Journal of physical oceanography*, V.51 (8), 2533 – 2552. DOI: <https://doi.org/10.1175/JPO-D-20-0167.1>, 2021
- Aghsaee, P., Boegman, L., Lamb, K.G.: Breaking of shoaling internal solitary waves, *Journal of Fluid Mechanics*, 659, 289–317, 35 <https://doi.org/10.1017/S002211201000248X>, 2010.
- Boegman, L. Ivey, G. N., Imberger, J.: The degeneration of internal waves in lakes with sloping topography, *Limnology and Oceanography*, 50 , 1620–1637, <https://doi.org/10.4319/lo.2005.50.5.1620>, 2005.

- Nakayama, K., Sato, T., Shimizu, K., and Boegman, L.: Classification of internal solitary wave breaking over a slope, *Physical Review Fluids*, 4, 014801, <https://doi.org/10.1103/PhysRevFluids.4.014801>, 2019.
- Terletska, K., Choi, B. H., Maderich, V., and Talipova, T.: Classification of internal waves shoaling over slope-shelf topography, *Russian Journal of Earth Sciences*, 20, doi:10.2205/2020ES000730, 2020.
- 5 New, A. L. and Pingree, R. D.: Large amplitude internal soliton wave packets in the Bay of Biscay. *Deep-Sea Research* ,37, 513–524, 1990.
- Alford, M.N., Peacock, T., Mackinnon, J.A. Tang, D.: The formation and fate of internal waves in the South China Sea, *Nature*, 521,65-69, 2015.
- Vlasenko, V., Stashchuk, N., Inall, M., Hopkins, J.E: Tidal energy conversion in a global hot spot: On the 3D dynamics of baroclinic tides at the Celtic Sea shelf break. *Journal of Geophysical Research: Oceans*, 119 (6), 3249-3265, 2014.
- 10 Osborn, A., Burch, T., Butman, B., Pineda, J: Internal solitons in the Andaman Sea, *Science*, 208, 4443,451–460, doi:10.1029/2008JC00472,1980.
- Nam, S. H. and Send, U.: Direct evidence of deep water intrusions onto the continental shelf via surging internal tides, *Journal of Geophysical Research*, 116, doi:10.1029/2010JC00669, 2010.
- Fu, K.-H., Wang, Y.-H, Lee, C.P., Lee, I. H.: The deformation of shoaling internal waves observed at the Dongsha Atoll in the northern South China Sea, *Coastal Engineering Journal*, 58, 1650001, 10.1142/S0578563416500017, 2016.
- 15 Orr, M.H. and Mignerey, P.C.: Nonlinear internal waves in the South China Sea: observation of the conversion of depression internal waves to elevation internal waves, *Journal of Geophysical Research*, 108(C3), 3064-2010, 2003.
- Klymak, J.M., Pinkel, R., Liu, C.T., Liu, A.K., David, L.: Prototypical solitons in the South China Sea, *Geophysical Research Letters* , 33 , L11607, doi:10.1029/ 2006GL025932,2006.
- 20 Huang, X., Chen, Z., Zhao, W., Zhang, Z., Zhou, C., Yang, Q. and Tian, J.: An extreme internal solitary wave event observed in the northern South China Sea, *Scientific Reports*, 6, 30041, <https://doi.org/10.1038/srep30041>, 2016.
- Ramp, S.R., Yang, Y.-J., Bahr, F.L.: Characterizing the nonlinear internal wave climate in the northeastern South China Sea, *Nonlinear Processes in Geophysics*, 17(5), DOI:10.5194/npg-17-481-2010, 2010.
- Wang, J., Huang, W., Yang, J., Zhang, H., Zheng, G.: Study of the propagation direction of the internal waves in the South China Sea using satellite images. *Acta Oceanologica Sinica*, 32, 42–50, <https://doi.org/10.1007/s13131-013-0312-6>, 2013.
- 25 Jackson, C.R.: *An Atlas of Internal Solitary-like Waves and Their Properties*, 2nd ed. Global Ocean Associates, Alexandria, VA, 560 pp. <http://www.internalwaveatlas.com> (accessed May 26, 2012), 2012.
- Zhang, X., Huang, X.,Zhang, Z., Zhou, C., Tian, J. and Zhao, W.: Polarity Variations of Internal Solitary Waves over the Continental Shelf of the Northern South China Sea: Impacts of Seasonal Stratification, Mesoscale Eddies, and Internal Tides *Journal of Physical Oceanography*, 48(6), 1349–1365, DOI:<https://doi.org/10.1175/JPO-D-17-0069.1>, 2018.
- 30 Vlasenko, V.I. and Hutter, K.: Numerical experiments on the breaking of solitary internal waves over a slope shelf topography, *The Journal of Physical Oceanography*, 32, 1779-1793, 2002.
- Wessels, F. and Hutter, K.: Interaction of internal waves with a topographic sill in a two-layered fluid, *Journal of Physical Oceanography*, 26(2), 5–20, 1996.
- 35 Talipova, T., Terletska, K., Maderich, V., Brovchenko, I., Pelinovsky, E., Jung, K.T., Grimshaw, R.: Solitary wave transformation on the underwater step: Asymptotic theory and numerical experiments, *Physics of Fluids*, 25 , doi: 10.1063/1.4797455, 2013.
- Grimshaw, R., Pelinovsky, E., Talipova, T, Kurkin, A.: Simulation of the transformation of internal solitary wave on oceanic shelves, *Journal of Physical Oceanography*, 34,2774–2791,2004.

- Maderich, V., Talipova, T., Grimshaw, R., Terletska, K., Brovchenko, I., Pelinovsky, E., Choi, B.H.: Interaction of a large amplitude interfacial solitary wave of depression with a bottom step, *Physics of Fluids*, 22, DOI: 10.1063/1.3455984, 2010.
- Moum, J.N., Farmer, D.M., Smyth, W.D., Armi, L., Vagle, S.: Structure and generation of turbulence at interfaces strained by internal solitary waves propagating shoreward over the continental shelf, *Journal of Physical Oceanography*, 33, 2093-2112, 2003.
- 5 Navrotsky, V.V. , Lozovatsky, I.D., Pavlova, E.P., Fernando, H.J.S.: Observations of internal waves and thermocline splitting near a shelf break of the Sea of Japan (East Sea), *Continental Shelf Research*, 24(12) 1375-1395, DOI: 10.1016/j.csr.2004.03.008, 2004.
- Bourgault, D., Blokhina, M. D., Mirshak, R. Kelley, D. E.: Evolution of a shoaling internal solitary wavetrain, *Geophysical research letters*, 34, L03601, <https://doi.org/10.1029/2006GL028462>, 2007.
- Cheng, M.H, Hsu, J.R.C., Chen, C.Y.: Laboratory experiments on waveform inversion of an internal solitary wave over a slope-shelf, *Environmental Fluid Mechanics*, 11, 353 – 384, 2011.
- 10 Meng, J., Zhang, J.: An Experiment of Internal Waves Observation by Synthetic Aperture Radar, *Proceedings of ACRS*, 1343-1345, 2003.
- Kanarska, Y., Maderich, V.: A non-hydrostatic numerical model for calculating free-surface stratified flows, *Ocean Dynamics*, 53, 176-185, 2003.
- Siegel, D.A., Domaradzki, J.A.: Large-eddy simulation of decaying stably stratified turbulence, *Journal of Physical Oceanography*, 24, 2353–2386, 1994.
- 15 Maderich, V., Brovchenko, I., Terletska, K., Hutter, K.: Numerical simulations of the nonhydrostatic transformation of basin-scale internal gravity waves and wave-enhanced meromixis in lakes Ch. 4 in Hutter K. (Ed.) *Nonlinear internal waves in lakes*, Springer. Series: *Advances in Geophysical and Environmental Mechanics*, 193-276 ,2012.
- Dubreil-Jacotin, L.: Sur les ondes type permanent dans les liquides heterogenes, *Atti R. Accad. Naz. Lincei, Mem. Cl. Sci.Fis., Mat. Nat.*, 15, 44-72, 1932.
- 20 Lamb, K.: Energy and pseudoenergy flux in the internal wave field generated by tidal flow over topography, *Cont. Shelf Res, Continental Shelf Research* 27(9) 1208-1232. DOI: 10.1016/j.csr.2007.01.020, 2007.
- Jackson, C.R., J.C.B. da Silva, and Jeans, G.: The generation of nonlinear internal waves, *Oceanography*, 25(2), 108–123,2012.