



Ensemble-based statistical interpolation with Gaussian anamorphosis for the spatial analysis of precipitation

Cristian Lussana, Thomas N. Nipen, Ivar A. Seierstad, and Christoffer A. Elo

Norwegian Meteorological Institute, Oslo, Norway [TS1](#)

Correspondence: Cristian Lussana (cristianl@met.no)

Received: 10 June 2020 – Discussion started: 19 June 2020

Revised: 10 November 2020 – Accepted: 27 November 2020 – Published:

Abstract. [TS2](#) [CE1](#) Hourly precipitation over a region is often simultaneously simulated by numerical models and observed by multiple data sources. An accurate precipitation representation based on all available information is a valuable result for numerous applications and a critical aspect of climate monitoring. The inverse problem theory offers an ideal framework for the combination of observations with a numerical model background. In particular, we have considered a modified ensemble optimal interpolation scheme. The deviations between background and observations are used to adjust for deficiencies in the ensemble. A data transformation based on Gaussian anamorphosis has been used to optimally exploit the potential of the spatial analysis, given that precipitation is approximated with a gamma distribution and the spatial analysis requires normally distributed variables. For each point, the spatial analysis returns the shape and rate parameters of its gamma distribution. The ensemble-based statistical interpolation scheme with Gaussian anamorphosis for precipitation (EnSI-GAP) is implemented in a way that the covariance matrices are local and stationary, and the background error covariance matrix undergoes a localization process. Concepts and methods that are usually found in data assimilation are here applied to spatial analysis, where they have been adapted in an original way to represent precipitation at finer spatial scales than those resolved by the background, at least where the observational network is dense enough. The EnSI-GAP setup requires the specification of a restricted number of parameters, and specifically, the explicit values of the error variances are not needed, since they are inferred from the available data. The examples of applications presented over Norway provide a better understanding of EnSI-GAP. The data sources considered are those typically used at national meteorological services, such as local

area models, weather radars, and in situ observations. For this last data source, measurements from both traditional and opportunistic sensors have been considered.

1 Introduction

Precipitation amounts are measured or estimated simultaneously by multiple observing systems, such as networks of automated weather stations and remote sensing instruments. At the same time, sophisticated numerical models simulating the evolution of the atmospheric state provide a realistic precipitation representation over regular grids with the spacing of a few kilometers. An unprecedented amount of rainfall data is available nowadays at very short sampling rates of 1 h or less. Nevertheless, it is a common experience within national meteorological services that the exact amount of precipitation, to some extent, eludes our knowledge. There may be numerous reasons for this uncertainty. For example, a thunderstorm triggering a landslide may have occurred in a region of complex topography where in situ observations are available but not exactly at the landslide spot; thus, weather radars may cover the region in a patchy way because of obstacles blocking the beam, and numerical weather prediction forecasts are likely to misplace precipitation maxima. Another typical situation is when an intense and localized summer thunderstorm hits a city. In this case, several observation systems are measuring the event and more than one numerical model may provide precipitation totals. From this plurality of data, a detailed reconstruction of the event is possible, provided that the data agree both in terms of the event intensity and on its spatial features. This is not always the case,

and sometimes meteorologists and hydrologists are left with a number of slightly different but plausible scenarios.

The objective of our study is the precipitation reconstruction through a combination of numerical model output with observations from multiple data sources. The aim is that the combined fields will provide a more skillful representation than any of the original data sources. As remarked above, any improvement in the accuracy and precision of precipitation can be of great help for monitoring the weather, but it is not only that. Snow- and hydrological- modeling will benefit from improvements in the quality of precipitation, which is one of the atmospheric forcing variables (Magnusson et al., 2019; Huang et al., 2019). Climate applications that make use of reanalysis (e.g., Hersbach et al., 2020; Jerme-
 10
 15
 20
 25
 30
 35
 40
 45
 50
 55

me- and Renshaw, 2016) or observational gridded data sets (e.g., Lussana et al., 2018), such as, for instance, the evaluation of a regional climate model (Kotlarski et al., 2017) or the calculation of climate indices (Vicente-Serrano et al., 2015), may also benefit from data sets combining model output and observations, as shown by Fortin et al. (2018). Besides, the intensity–duration–frequency curve (IDF curve) derived from precipitation data sets are widely used in civil engineering for determining design values, and the quality of the reconstruction of extremes has a strong influence on IDF curves (Dyrddal et al., 2015).

The data sources considered in our study are precipitation ensemble forecasts, observations from in situ measurement stations, and estimates derived from weather radars. Numerical model fields are available everywhere, and the quality of their output is constantly increasing over the years. The weather-dependent uncertainty is often delivered in the form of an ensemble. At present, assessments using hydrological models have shown that input from numerical models “may be comparable or preferable compared to gauge observations to drive a hydrologic and/or snow model in complex terrain”, as stated by Lundquist et al. (2019), based on their review of recent research. One of the key messages by Lundquist et al. (2019) is that numerical models represent precipitation fields at ungauged sites in a realistic and convincing way, as it is demonstrated by the accuracy of their total annual rain and snowfall estimates, notwithstanding that daily or subdaily aggregated precipitation fields may misrepresents individual precipitation events, such as storms. In the work by Crespi et al. (2019), it has been demonstrated that the combination of numerical model outputs and in situ observations improve the representation of monthly precipitation climatologies over Norway, if compared to similar products based on in situ observations only. Lussana et al. (2019b) have successfully used monthly precipitation climatologies to improve the performances of statistical interpolation methods in complex terrain over Norway. However, because model fields represent areal averages, the characteristics of simulated precipitation depend significantly on the model resolution, as remarked for global and regional reanalyses over the Alps by Isotta et al. (2019). In particu-

lar, Jerme- and Renshaw (2016) demonstrates that increasing resolution via downscaling improves precipitation representation, though they also point out that assimilating observations at a high resolution in numerical models is important for reconstructing high-threshold/small-scale events. The sources of model errors and their treatments in data assimilation (DA) schemes have been studied extensively. For instance, in the introduction of the paper by Raanes et al. (2015), a list of model errors is reported, together with several references to other studies addressing them. Regarding precipitation forecasts, model errors often encountered in applications are (Müller et al., 2017) systematic under- or overestimations of amounts, spatial errors in the placement of events, and underestimations of uncertainty. With reference to spatial analysis, we consider observed precipitation data to be more accurate than model estimates. In fact, model outputs are evaluated in terms of their ability to reconstruct observed values. The most important disadvantage of observational networks is that often they do not cover the region under consideration; moreover, observations may be irregularly distributed in space and present missing data over time. Each observational data source has its own characteristics that have been extensively studied in the literature that we will address here only superficially, since our objective is the combination of information. For example, rain gauges are possibly the most accurate precipitation measurement available at present (CIMO, 2014), apart from when the observations are affected by gross measurement errors, as defined by Gandin (1988). There are multiple sources of uncertainty for gauge measurements (Zahumensky, 2004), such as catching and counting (Pollock et al., 2014). The undercatch of solid precipitation due to wind (Wolff et al., 2015) is a significant problem in cold climates. Radar-derived estimates are affected by several issues such as blocking and nonuniform attenuation of the radar beam due to obstacles along the path, especially in a complex terrain. A statement in the introduction of the book by Germann and Joss (2004) is illuminating in this sense. “To put a weather radar in a mountainous region is like pitching a tent in a snowstorm: the practical use is obvious and large – but so are the problems” (Germann and Joss, 2004). In addition, weather radars do not directly measure precipitation; instead, they measure reflectivity, which is then transformed into a precipitation rate. The transformation itself contributes to increasing the uncertainty of the final estimates. Another important aspect of observational data that will be treated only marginally here is data quality control. In this work we will consider only quality-controlled observations. To sum up, in situ data are the more accurate observations of precipitation that we will consider. Thus, radar estimates, which are calibrated using gauges as references, are less accurate than in situ data. They are spatially correlated with the actual precipitation, and they are affected by less uncertainty than the simulations carried out by numerical models. Numerical model output is the basic information

available everywhere and the one we consider more uncertain.

Inverse problem theory (Tarantola, 2005) provides the ideal framework for the combination of observations with a numerical model background. The marginal distribution of the precipitation analysis is assumed to be a gamma distribution, and we aim at estimating its shape and rate parameters for each grid point. The gamma distribution is appropriate for representing precipitation data, as reported, for example, by Wilks (2019). The formulation of the statistical interpolation method presented is similar to the analysis step of the ensemble Kalman filter (Evensen, 2006) or the ensemble optimal interpolation (EnOI; Evensen, 2003), with the important difference that EnOI uses a time-lagged ensemble, while the ensemble considered in our method is made of members of a single numerical weather prediction (NWP) model run. The hourly precipitation over the grid is regarded as the realization of a transformed Gaussian random field (Frei and Isotta, 2019). The Gaussian anamorphosis (Bertino et al., 2003) transforms data such that precipitation better complies with the assumptions of normality that are required by the analysis procedure. The nonstationary covariance matrices are approximated with local stationary matrices, as in the paper by Kuusela and Stein (2018). In addition, the background error covariance matrix includes a static (i.e., not flow-dependent) scale matrix that accounts for deficiencies in the background ensemble, as in hybrid ensemble optimal interpolation (Carrassi et al., 2018). The term scale matrix has been used by Bocquet et al. (2015). In the following, the ensemble-based statistical interpolation with Gaussian anamorphosis for the spatial analysis of precipitation is referred to as EnSI-GAP. From the point of view of geostatistics, EnSI-GAP can be thought of as performing a kriging (Wackernagel, 2003) of the Gaussian-transformed ensemble mean and then retrieving the probability distribution of precipitation at every location using a predefined gamma distribution.

The innovative part of the presented approach to statistical interpolation is in the application to spatial analysis of concepts that are usually encountered in DA. The formulation of the problem is adapted to our aim, which is improving precipitation representation instead of providing initial conditions for a physical model, as it is for DA. In the literature, there are a number of articles describing similar approaches applied to precipitation analysis, such as Mahfouf et al. (2007); Soci et al. (2016); Lespinas et al. (2015). However, our statistical interpolation is the first one, to our knowledge, in which the background error covariance matrix is derived from numerical model ensemble and where Gaussian anamorphosis is applied directly to precipitation data. An additionally innovative part of the method is that EnSI-GAP does not require the explicit specification of error variances for the background or observations, as in the case of most of the other methods (Soci et al., 2016). In fact, those error variances are often difficult to estimate in a way that is general enough to cover a wide range of cases. Our approach

is to specify the reliability of the background, with respect to observations, in such a way that error variances can vary both in time and space. An additionally innovative part of our research is that we consider opportunistic sensing networks of the type described by de Vos et al. (2020) within the examples of the applications proposed. Citizen weather stations are rapidly increasing in prevalence and are becoming an emerging source of weather information, as described by Nipen et al. (2020). Thanks to those networks, for some regions we can rely on an extremely dense spatial distribution of in situ observations.

The remainder of the paper is organized as follows. Section 2 describes the EnSI-GAP method in a general way, without references to specific data sources. Section 3 presents the results of EnSI-GAP applied to three different problems, namely an idealized experiment and then two examples in which the method is applied to real data.

2 Methods: ensemble-based statistical interpolation with Gaussian anamorphosis for precipitation (EnSI-GAP)

We assume that the marginal probability density function (PDF) for the hourly precipitation at a point in time follows a gamma distribution (Wilks, 2019). This marginal PDF is characterized through the estimation of the gamma shape and rate for each point and hour.

Precipitation fields are regarded as realizations of local, stationary, and transformed Gaussian random fields, where each hour is considered independently from the others. The time sequence of EnSI-GAP simulated precipitation fields shows temporal continuity because this is present in both observations and background fields. Transformed Gaussian random fields are used for the production of observational precipitation gridded data sets by Frei and Isotta (2019). A random field is said to be stationary if the covariance between a pair of points depends only on how far apart they are located from each other. Precipitation totals are nonstationary random fields because of the nonstationarity of weather phenomena or, simply, the influence of topography. In our method, precipitation is locally modeled as a stationary random field. The covariance parameter estimation and spatial analysis are carried out in a moving window fashion around each grid point. A similar approach is described by Kuusela and Stein (2018), and the elaboration over the grid can be carried out in parallel for several grid points simultaneously.

An implementation of EnSI-GAP is reported in Algorithm 1. The mathematical notation and the symbols used are described in two tables, namely Table 1, for global variables, and Table 2, for local variables, which are those variables that vary from point to point. As in the paper by Sakov and Bertino (2011), upper accents have been used to denote local variables; so, for example, $\overset{i}{\mathbf{X}}$ is the local version of matrix \mathbf{X} . If \mathbf{X} is a matrix `TS3`, $\overset{i}{\mathbf{X}}$ is its i th column (column vector),

Algorithm 1 EnSI-GAP – ensemble-based statistical interpolation scheme with Gaussian anamorphosis for precipitation. In this implementation, Gaussian functions have been used for correlation (and correlation-like) matrices. The symbols are listed in Tables 1 and 2.

Require: forecast ensemble $\tilde{\mathbf{X}}^f$ and ensemble mean \mathbf{x}^f ; observations $\tilde{\mathbf{y}}^o$; parameters ε^2 , ν , \mathbf{L} , \mathbf{D}

Gaussian anamorphosis: estimation of α_D and β_D , then $\mathbf{X}^f = g(\tilde{\mathbf{X}}^f)$; $\mathbf{y}^o = g(\tilde{\mathbf{y}}^o)$

Define additional global variables: $\mathbf{x}^b = \mathbf{x}^f$; \mathbf{A}^f : $\mathbf{A}_{i,:}^f = \mathbf{X}_i^f - \mathbf{x}^f$

for all grid points $\{i = 1, \dots, m\}$ **do**

select the closest p_i observations $\tilde{\mathbf{y}}^o$ and obtain $\tilde{\mathbf{y}}^b = \mathbf{H}\tilde{\mathbf{x}}^b$

{Dynamical background error covariance matrices, $\tilde{\mathbf{S}}^f \approx (k-1)^{-1}(\tilde{\mathbf{H}}\tilde{\mathbf{H}}^T) \circ [(\tilde{\mathbf{H}}\mathbf{A}^f)(\tilde{\mathbf{H}}\mathbf{A}^f)^T]$ }

$\tilde{\mathbf{Z}}^f$: $\tilde{\mathbf{Z}}_{jl}^f = \exp\{-0.5[d(\mathbf{r}_j, \mathbf{r}_l)/L_i]^2\}$, $j = 1, \dots, p_i$ and $l = 1, \dots, p_i$; $d()$ horizontal distance

$\tilde{\mathbf{S}}_{jl}^f \approx (k-1)^{-1}\tilde{\mathbf{Z}}_{jl}^f[(\tilde{\mathbf{H}}\mathbf{A}^f)_{j,:}(\tilde{\mathbf{H}}\mathbf{A}^f)_{l,:}]$, $j = 1, \dots, p_i$ and $l = 1, \dots, p_i$

{ $\tilde{\mathbf{G}}_{i,:}^f \approx (k-1)^{-1}(\tilde{\mathbf{H}}\tilde{\mathbf{H}}^T)_{i,:} \circ [\mathbf{A}_{i,:}^f(\tilde{\mathbf{H}}\mathbf{A}^f)^T]$ }

$\tilde{\mathbf{V}}_{i,:}^f$: $\tilde{\mathbf{V}}_{il}^f = \exp\{-0.5[d(\mathbf{r}_i, \mathbf{r}_l)/L_i]^2\}$, $l = 1, \dots, p_i$

$\tilde{\mathbf{G}}_{i,l}^f \approx (k-1)^{-1}\tilde{\mathbf{V}}_{il}^f[\mathbf{A}_{i,:}^f(\tilde{\mathbf{H}}\mathbf{A}^f)_{l,:}]$, $l = 1, \dots, p_i$

{Background error covariance matrices}

definition of $\langle \dots \rangle$: $\langle \mathbf{c} \rangle = \sum_{l=1}^{p_i}(\tilde{\mathbf{V}}_{il}\mathbf{c}_l) / \sum_{l=1}^{p_i}(\tilde{\mathbf{V}}_{il})$, where \mathbf{c} is a generic p_i vector

$\tilde{\sigma}_f^2 = \nu(\text{diag}(\tilde{\mathbf{S}}^f))$; $\tilde{\sigma}_{ob}^2 = \nu(\langle \tilde{\mathbf{y}}^o - \tilde{\mathbf{y}}^b \rangle^2)$

if $(\tilde{\sigma}_{ob}^2 = 0)$ and $(\tilde{\sigma}_f^2 = 0)$ **then**

$\tilde{\mathbf{x}}_i^a = \tilde{\mathbf{x}}_i^b$, then apply the inverse data transformation $\tilde{\mathbf{x}}_i^a = g^{-1}(\tilde{\mathbf{x}}_i^b)$ and STOP

else if $[\tilde{\sigma}_{ob}^2 / (1 + \varepsilon^2)] \leq \tilde{\sigma}_f^2$ **then**

$\tilde{\sigma}_u^2 = 0$; $\tilde{\mathbf{S}}^b = \tilde{\mathbf{S}}^f$; $\tilde{\mathbf{G}}_{i,:}^b = \tilde{\mathbf{G}}_{i,:}^f$;

else

$\tilde{\sigma}_u^2 = \tilde{\sigma}_{ob}^2 / (1 + \varepsilon^2) - \tilde{\sigma}_f^2$

{add the scale matrix $\tilde{\sigma}_u^2 \tilde{\mathbf{I}}^u$ to the background error covariance matrices}

$\tilde{\mathbf{S}}^b$: $\tilde{\mathbf{S}}_{jl}^b = \tilde{\mathbf{S}}_{jl}^f + \tilde{\sigma}_u^2 \exp\{-0.5[d(\mathbf{r}_j, \mathbf{r}_l)/D_i]^2\}$, $j = 1, \dots, p_i$ and $l = 1, \dots, p_i$

$\tilde{\mathbf{G}}_{i,:}^b$: $\tilde{\mathbf{G}}_{il}^b = \tilde{\mathbf{G}}_{il}^f + \tilde{\sigma}_u^2 \exp\{-0.5[d(\mathbf{r}_i, \mathbf{r}_l)/D_i]^2\}$, $l = 1, \dots, p_i$

end if

Observation error covariance matrix: first $\tilde{\sigma}_b^2 = \tilde{\sigma}_f^2 + \tilde{\sigma}_u^2$, then $\text{diag}(\tilde{\mathbf{R}}) = \varepsilon^2 \tilde{\sigma}_b^2$

{Analysis}

$\tilde{\mathbf{x}}_i^a = \tilde{\mathbf{x}}_i^b + \tilde{\mathbf{G}}_{i,:}^b (\tilde{\mathbf{S}}^b + \tilde{\mathbf{R}})^{-1} (\tilde{\mathbf{y}}^o - \tilde{\mathbf{y}}^b)$

$(\sigma^2)_i^a = \mathbf{P}_{i,i}^f + \tilde{\sigma}_u^2 - \tilde{\mathbf{G}}_{i,:}^b (\tilde{\mathbf{S}}^b + \tilde{\mathbf{R}})^{-1} (\tilde{\mathbf{G}}_{i,:}^b)^T$

{Data back transformation}

inverse transformation g^{-1} of 400 quantiles of the distribution $N(\tilde{\mathbf{x}}_i^a, (\sigma^2)_i^a)$

α_i^a and β_i^a are obtained by optimizing the fitting of a gamma distribution to the 400 quantiles through a least squares fitting method

end for

and $\mathbf{X}_{i,:}$ is its i th row (row vector). The Bayesian statistical method used in our spatial analysis is optimal for Gaussian random fields. Then, a data transformation is applied as a preprocessing step before the spatial analysis. The introduction of a data transformation compels us to inverse transform the predictions of the spatial analysis into the original space of precipitation values.

The data transformation chosen is a Gaussian anamorphosis (Bertino et al., 2003) that transforms a random variable, following a gamma distribution, into a standard Gaussian. In the implementation presented, constant values of the gamma parameters' shape and rate are used in the data transformation over the whole domain. The same values are used for the

inverse transformation as well. The constant (in space) values are reestimated every hour. It is worth remarking that the gamma parameters used in the data transformations must not be confused with those that define the gamma distribution of the hourly precipitation at each grid point and that are the objective of our spatial analysis. The analysis procedure returns a different Gaussian PDF for each grid point, which is transformed into a gamma distribution by means of the constant shape and rate estimated for the data transformation. However, since the inverse transformation at each grid point is applied to a Gaussian PDF that differs from those of the surrounding points, the gamma distribution of hourly precipitation will also vary from one grid point to the other. The

Table 1. Overview of variables and notation for global variables. All the vectors are column vectors unless otherwise specified. If \mathbf{X} is a matrix, \mathbf{X}_i is its i th column (column vector), and $X_{i,:}$ is its i th row (row vector). Note: PDF – probability density function [CE2](#).

| Symbol | Description | Space | Dimension |
|------------------------------|---|-------------|---------------------|
| m | Number of grid points | – | Scalar |
| p | Number of observations | – | Scalar |
| k | Number of forecast ensemble members | – | Scalar |
| $\tilde{\mathbf{X}}^f$ | Forecast ensemble | Original | $m \times k$ matrix |
| \mathbf{X}^f | Forecast ensemble | Transformed | $m \times k$ matrix |
| \mathbf{x}^f | Forecast ensemble mean | Transformed | p vector |
| \mathbf{A}^f | Forecast perturbations | Transformed | $m \times k$ matrix |
| \mathbf{P}^f | Forecast covariance matrix | Transformed | $m \times m$ matrix |
| $\tilde{\mathbf{y}}^o$ | Observations | Original | p vector |
| \mathbf{y}^o | Observations | Transformed | p vector |
| $\tilde{\mathbf{x}}^t$ | Truth | Original | m vector |
| \mathbf{x}^t | Truth | Transformed | m vector |
| $\tilde{\mathbf{x}}^a$ | Analysis | Original | m vector |
| \mathbf{x}^a | Analysis | Transformed | m vector |
| $\boldsymbol{\eta}^a$ | Analysis error | Transformed | m vector |
| \mathbf{P}^a | Analysis error covariance matrix | Transformed | $m \times m$ matrix |
| $\boldsymbol{\sigma}^a$ | Analysis error standard deviation, $\sqrt{\text{diag}(\mathbf{P}^a)}$ | Transformed | m vector |
| \mathbf{x}^b | Background | Transformed | m vector |
| $\boldsymbol{\eta}^b$ | Background error | Transformed | m vector |
| \mathbf{P}^b | Background error covariance matrix | Transformed | $m \times m$ matrix |
| $\boldsymbol{\varepsilon}^o$ | Observation error | Transformed | p vector |
| \mathbf{H} | Observation operator | Transformed | $p \times m$ matrix |
| \mathbf{L} | Reference length scales for localization | Transformed | m vector |
| \mathbf{D} | Reference length scales of the scale matrix | Transformed | m vector |
| ε^2 | Relative quality of the background with regards to observations | Transformed | Scalar |
| ν | Inflation factor | Transformed | Scalar |
| ξ | Small constant | Original | Scalar |
| α_D | Shape of the gamma PDF used in the data transformation | Original | Scalar |
| β_D | Rate of the gamma PDF used in the data transformation | Original | Scalar |
| $\boldsymbol{\alpha}^a$ | Shape of the analysis gamma PDF | Original | m vector |
| $\boldsymbol{\beta}^a$ | Rate of the analysis gamma PDF | Original | m vector |

gamma shape and rate parameters used in the data transformation are denoted as the scalar values α_D and β_D , respectively, while the spatially dependent gamma analysis parameters are denoted with the m column vectors $\boldsymbol{\alpha}^a$ and $\boldsymbol{\beta}^a$.

Algorithm 1 can be divided into the following three parts that are described in the next sections: the data transformation in Sect. 2.1, the Bayesian spatial analysis in Sect. 2.2, and the inverse transformation in Sect. 2.3.

2.1 Data transformation via Gaussian anamorphosis

The Gaussian anamorphosis maps a gamma distribution into a standard Gaussian. Bertino et al. (2003) introduced the concept of Gaussian anamorphosis from geostatistics to data assimilation. A general reference on Gaussian anamorphosis in geostatistics is the book by Chiles and Delfiner (2012), chap. 6. This preprocessing strategy has been used in several studies in the past (e.g., Amezcua and Leeuwen, 2014; Lien et al., 2013). A visual representation of the transformation

process can be found in Fig. 1 of the paper by Lien et al. (2013) and in this article in Sect. 3.2.2.

The hourly precipitation background and observations, $\tilde{\mathbf{X}}^f$ and $\tilde{\mathbf{y}}^o$, respectively, are transformed into those used in the spatial analysis by means of the Gaussian anamorphosis $g()$ as follows [CE3](#):

$$\mathbf{X}^f = g(\tilde{\mathbf{X}}^f) \tag{1}$$

$$\mathbf{y}^o = g(\tilde{\mathbf{y}}^o). \tag{2}$$

As indicated in Table 1, the Gaussian variables are \mathbf{X}^f and \mathbf{y}^o , while the variables with the original hourly precipitation values, $\tilde{\mathbf{X}}^f$ and $\tilde{\mathbf{y}}^o$, follow a gamma distribution. The gamma shape and rate, α_D and β_D , respectively, of this gamma distribution are derived from the background precipitation values by a fitting procedure based on maximum likelihood.

In this paragraph, the procedure used in Sect. 3 is described. For an arbitrary hour, two different solutions are adopted, depending on the weather conditions. We are in the presence of dry weather conditions when at least one of the

Please note the remarks at the end of the manuscript.

Table 2. Overview of variables and notation for local variables. All variables are specified in the transformed space. All the vectors are column vectors unless otherwise specified. If \mathbf{X} is a matrix, X_i is its i th column (column vector), and $X_{i,:}$ is its i th row (row vector).

| Symbol | Description | Dimension |
|---------------------|--|-------------------------|
| p_i | Number of observations in the surroundings of the i th grid point | Scalar |
| \mathbf{H}^i | Observation operator | $p_i \times m$ matrix |
| \mathbf{R}^i | Observation error covariance matrix | $p_i \times p_i$ matrix |
| $\mathbf{\Gamma}^o$ | Observation error correlation matrix | $p_i \times p_i$ matrix |
| \mathbf{y}^b | Background at observation locations | p_i vector |
| \mathbf{P}^b | Background error covariance matrix | $m \times m$ matrix |
| $\mathbf{\Gamma}$ | Localization matrix | $m \times m$ matrix |
| \mathbf{V}^i | Localization between grid points and observation locations | $m \times p_i$ matrix |
| \mathbf{Z}^i | Localization between observation locations | $p_i \times p_i$ matrix |
| $\mathbf{\Gamma}^u$ | Scale correlation matrix | $m \times m$ matrix |
| \mathbf{G}^b | Background error covariances between grid points and observation locations | $m \times p_i$ matrix |
| \mathbf{S}^b | Background error covariances between observation locations | $p_i \times p_i$ matrix |
| \mathbf{G}^f | Forecast error covariances between grid points and observation locations | $m \times p_i$ matrix |
| \mathbf{S}^f | Forecast error covariances between observation locations | $p_i \times p_i$ matrix |
| σ_o^2 | Observation error variance | Scalar |
| σ_b^2 | Average background error variance | Scalar |
| $\sigma_{b'}^2$ | Empirical estimate of σ_b^2 | Scalar |
| σ_f^2 | Average forecast error variance | Scalar |
| σ_u^2 | Error variance for the scale matrix | Scalar |
| σ_{ob}^2 | Sum of error variances (Eq. 11) | Scalar |

ensemble members reports precipitation in less than 10 % of the grid points; otherwise, we have wet weather. In the case of wet conditions, ensemble members are considered separately, and for each of them, we derive a single value of shape and a single value of rate – both are kept as constants over the whole domain. The values of shape and rate are the maximum likelihood estimators calculated iteratively by means of the Newton–Raphson method as described by Wilks (2019), Sect. 4.6.2. Then, α_D and β_D are the averages of all the values of shape (one value for each ensemble member) and rate (one value for each ensemble member). In the case of dry weather, α_D and β_D are set to typical values obtained as the averages of all the available cases.

In Gaussian anamorphosis, zero precipitation values must be treated as special cases, as explained by Lien et al. (2013). The solution we adopted is to first add a very small amount to zero precipitation values, $\xi = 0.0001$ mm, and then to apply the transformation $g()$ to all values. The same small amount is then subtracted after the inverse transformation. This is a simple but effective solution for spatial analysis, as shown

in the example of Sect. 3.1. In principle, the statistical interpolation is sensitive to the small amount ξ chosen, such that using 0.01 mm instead of 0.0001 mm will return slightly different analysis values in the transition between precipitation and no precipitation. In practice, we have tested it, and we found negligible differences when values smaller than, for example, 0.05 mm (half of the precision of a standard rain gauge measurement) have been used.

The transformation function $g(x)$, applied to the generic scalar value x , used in Eqs. (1) and (2) is as follows:

$$g(x) = Q_{\text{Norm}}(\text{Gamma}(x + \xi; \alpha_D, \beta_D)), \quad (3)$$

where $\text{Gamma}(x + \xi; \alpha_D, \beta_D)$ is the gamma cumulative distribution function when the shape is equal to α_D and the rate is equal to β_D . Q_{Norm} is the quantile function (or inverse cumulative distribution function) for the standard Gaussian distribution. An example of an application of the procedure described above is given in Sect. 3.2.2.

For the presented implementation of EnSI-GAP, the Gaussian anamorphosis is based on the constant parameters of α_D

and β_D over the whole domain. This assumption might be too restrictive for very large domains, such as for all of Europe, for instance. In this case, different solutions may be explored, such as slowly varying the gamma parameters in space or time, based on the climatology.

2.2 Spatial analysis

The spatial analysis in Algorithm 1 has been divided into three parts. In Sect. 2.2.1, global variables have been defined. Then, as stated in the introduction of Sect. 2, the analysis procedure is performed on a grid point by grid point basis. In Sects. 2.2.2 and 2.2.3, the procedure applied at the generic i th grid point is described. In Sect. 2.2.2, the specification of the local error covariance matrices is described. In Sect. 2.2.3, the standard analysis procedure is presented together with the treatment of a special case.

2.2.1 Definitions

In Bayesian statistics, according to Savage (1972), a state is “a description of the world, which is the object with which we are concerned, leaving no relevant aspect undescribed”, and “the true state is the state that does in fact obtain”. The mathematical notation used is reported in Tables 1 and 2, and it is similar to that suggested by Ide et al. (1997). The object of our study is the hourly precipitation field, $x(\cdot)$, that is the hourly total precipitation amount over a continuous surface covering a spatial domain in terrain-following coordinates, \mathbf{r} . Our state is the discretization over a regular grid of this continuous field. The true state (our truth; \mathbf{x}^t) at the i th grid point is the areal average as follows:

$$\mathbf{x}_i^t = \int_{V_i} x(\mathbf{r}) \, d\mathbf{r}, \quad (4)$$

where V_i is a region surrounding the i th grid point. The size of V_i determines the effective resolution of \mathbf{x}^t at the i th grid point. Our aim is to represent the truth with the smallest possible V_i . The effective resolution of the truth will inevitably vary across the domain. In observation-void regions, the effective resolution will be the same as that of the numerical model used as the background, which is approximately $o(10\text{--}100 \text{ km}^2)$ for high-resolution local area models (Müller et al., 2017). In observation-dense regions, the effective resolution should be comparable to the average distance between observation locations, with the model resolution as the upper bound.

The analysis is the best estimate of the truth, in the sense that it is the linear, unbiased estimator with the minimum error variance. The analysis is defined as $\mathbf{x}^a = \mathbf{x}^t + \boldsymbol{\eta}^a$, where the column vector of the analysis error at grid points is a random variable following a multivariate normal distribution $\boldsymbol{\eta}^a \sim \mathcal{N}(\mathbf{0}, \mathbf{P}^a)$. The marginal distribution of the analysis at

the i th grid point is a normal random variable, and our statistical interpolation scheme returns its mean value \mathbf{x}_i^a and its standard deviation $\sigma_i^a = \sqrt{\mathbf{P}_{ii}^a}$.

As for linear filtering theory (Jazwinski, 2007), the analysis is obtained as a linear combination of the background (a priori information) and the observations. The background is written as $\mathbf{x}^b = \mathbf{x}^t + \boldsymbol{\eta}^b$, where the background error is a random variable $\boldsymbol{\eta}^b \sim \mathcal{N}(\mathbf{0}, \mathbf{P}^b)$. The background PDF is determined mostly, but not exclusively, by the forecast ensemble, as described in Sect. 2.2.1. The forecast ensemble mean is $\mathbf{x}^f = k^{-1} \mathbf{X}^f \mathbf{1}$, where $\mathbf{1}$ is the m vector, with all elements equal to 1. The background expected value is set to the forecast ensemble mean, $\mathbf{x}^b = \mathbf{x}^f$. The forecast perturbations are \mathbf{A}^f , where the i th perturbation is $\mathbf{A}_i^f = \mathbf{X}_i^f - \mathbf{x}^f$. The covariance matrix is as follows:

$$\mathbf{P}^f = (k - 1)^{-1} \mathbf{A}^f (\mathbf{A}^f)^T, \quad \text{TS4} \quad (5)$$

and plays a role in the determination of \mathbf{P}^b , as defined in Sect. 2.2.2.

The p observations are written as $\mathbf{y}^o = \mathbf{H} \mathbf{x}^t + \boldsymbol{\varepsilon}^o$, where the observation error $\boldsymbol{\varepsilon}^o \sim \mathcal{N}(\mathbf{0}, \mathbf{R})$ is the observation operator that we consider as a linear function that maps \mathbb{R}^m onto \mathbb{R}^p .

2.2.2 Specification of the observation and background error covariance matrices

Our definitions of the error covariance matrices follow from a few general principles that we have formulated. For P1 (i.e., general principle 1; hereinafter the same definition applies for other references to P), background and observation uncertainties are weather and location dependent. For P2, the background is more uncertain, where either the forecast is more uncertain or observations and forecasts disagree the most. For P3, observations are a more accurate estimate of the true state than the background. We want to specify how much more we trust the observations than the background in a simple way, such as, for example, “we trust the observations twice as much as the background”. For P4, the local observation density must be used optimally to ensure a higher effective resolution, as it has been defined in Sect. 2.2.1 where more observations are available. For P5, the spatial analysis at a particular hour does not require the explicit knowledge of observations and forecasts at any other hour. However, constants in the covariance matrices can be set, depending on the history of deviations between observations and forecasts. P5 makes the procedure more robust and easier to implement in real-time operational applications.

P1 and P4 led to our choice of implementing Algorithm 1 by means of a loop over grid points. P2 will lead us to the identification of the regions in which the uncertainty on the input data is greatest. P3 will be used to define the observational uncertainty with respect to that of the background.

A distinctive feature of our spatial analysis method is that the background error covariance matrix \mathbf{P}^b is specified as the

sum of two parts, namely a dynamical component and a static component. This choice is consistent with P1 and P2. The dynamical part introduces nonstationarity, while the static part describes covariance stationary random variables. This choice follows from P1, and it has been inspired by hybrid data assimilation methods (Carrassi et al., 2018). The dynamical component of the background error covariance matrix is obtained from the forecast ensemble. Because the ensemble has a limited size, and often the number of members is quite small (order of tens of members), a straightforward calculation of the background covariance matrix will include spurious correlations between distant points. Localization is a technique applied in DA to fix this issue (Greybush et al., 2011). The static component has also been introduced to remedy the shortcomings of using numerical weather prediction as the background. There are deviations between observations and forecasts that cannot be explained by the forecast ensemble. A typical example is when all the ensemble members predict no precipitation but rainfall is observed. In those cases, we trust observations, as stated through P3. Then, the static component adds noise to the model-derived background error, as in the paper by Raanes et al. (2015). In Bocquet et al. (2015), the static component is referred to as a scale matrix, since it is used to scale the noise component of the model error, and we adopt the same term here. In scale matrix, the term scale is not associated with the concept of spatial scales; instead, it refers to a scaling (amplification or reduction) of the uncertainty. We will also refer to this matrix, and its related quantities, with the letter u to emphasize that this component of the background error is unexplained by the forecast.

\mathbf{P}^b is written as follows:

$$\mathbf{P}^b = \mathbf{\Gamma} \circ \mathbf{P}^f + \sigma_u^2 \mathbf{\Gamma}^u. \quad (6)$$

The first component on the right-hand side of Eq. (6) is the dynamical part. \mathbf{P}^f is the forecast uncertainty of Eq. (5), $\mathbf{\Gamma}$ is the localization matrix, and \circ is the Schur product symbol. The localization technique we apply is a combination of local analysis and covariance localization, as defined by Sakov and Bertino (2011). In the local analysis, only the closest observations are used, and we have implemented it by considering only observations within a predefined spatial window surrounding each grid point, up to a preset maximum number of p_{mx} . The covariance localization is implemented through the element-wise multiplication of \mathbf{P}^f by $\mathbf{\Gamma}$, which has the form of a correlation matrix that depends on distances and is used to suppress long-range correlations. The second component on the right-hand side of Eq. (6) is the static part. The scale matrix is expressed through a constant variance σ_u^2 , which modulates the noise, and the correlation matrix $\mathbf{\Gamma}^u$, which defines the spatial structure of that noise. In the examples of applications presented in Sect. 3, both

$\mathbf{\Gamma}$ and $\mathbf{\Gamma}^u$ are obtained as analytical functions of the spatial coordinates. In Algorithm 1, $\mathbf{\Gamma}$ and $\mathbf{\Gamma}^u$ have been specified through Gaussian functions; other possibilities for correlation functions have been described, for instance, by Gaspari and Cohn (1999). We have chosen not to inflate or deflate \mathbf{P}^f directly and to modulate the amplitude of background covariances only through the terms of Eq. (6). In this way, we reduce the number of parameters that need to be specified. As a matter of fact, for the combination of observations and background in the analysis procedure, the m by m covariance matrices are never directly used. Instead, the matrices used are the covariances between grid points and observation locations, $\mathbf{G}^b = \mathbf{P}^b \mathbf{H}^T$ (specifically only the i th row of this matrix is used), and the covariances between observation locations $\mathbf{S}^b = \mathbf{H} \mathbf{P}^b \mathbf{H}^T$. \mathbf{H} is the local observation operator, which is a linear function, i.e., $\mathbb{R}^m \rightarrow \mathbb{R}^{p_i}$.

The local observation error covariance matrix \mathbf{R} is written as the constant observation error variance σ_o^2 multiplying the correlation matrix $\mathbf{\Gamma}^o$ as follows:

$$\mathbf{R} = \sigma_o^2 \mathbf{\Gamma}^o. \quad (7)$$

$\mathbf{\Gamma}^o$ is often the identity, but other choices are possible. For instance, if some observations are known to be more accurate than the average of the others, then the corresponding diagonal elements of $\mathbf{\Gamma}^o$ can be set to values smaller than 1. The observation uncertainty can vary in time and space, according to P1; however, its spatial structure is fixed and depends on the analytical function chosen for $\mathbf{\Gamma}^o$. Note that the observation error is not only determined by the instrumental error, but it also includes the representativeness error (Lussana et al., 2010; Lorenc, 1986), which is often the largest component of the observation error. The representative error is a consequence of the mismatch between the spatial supports of the areal averages reconstructed by the background and the almost point-like observations.

The spatial structures of the error covariance matrices are determined through the matrices in Eqs. (6) and (7). At this point, we need to set σ_u^2 and σ_o^2 to scale the magnitude of the covariances. In the process described below, we will see that the two variances are completely determined by two scalars, ε^2 and ν , also defined below, that we assume to be known before running the spatial analysis. This prior knowledge defines the constraints that the solution has to satisfy and allows us to choose one particular solution among all the possibilities. σ_u^2 and σ_o^2 characterize the region around the i th grid point as a whole, without distinguishing between the individual observations. We introduce two relationships linking σ_u^2 and σ_o^2 through two additional variances, both expressing the

uncertainty of a quantity over the same region around the i th grid point. σ_b^2 is the average background error variance, and σ_f^2 is the average forecast error variance. The two relationships are as follows:

$$\varepsilon^2 = \sigma_o^2 / \sigma_b^2 \tag{8}$$

$$\sigma_b^2 = \sigma_f^2 + \sigma_u^2. \tag{9}$$

ε^2 is a global variable, and it is the relative precision of the observations with respect to the background. Equation (8) implements P3, and ε^2 should be set to a value smaller than 1. For example, $\varepsilon^2 = 0.1$ means that we believe the observations to be 10 times more precise an estimate of the true value than the background. Equation (9) is an adaptation from Eq. (6). The next two relationships we introduce have the objective of estimating σ_f^2 and the empirical (i.e., based on data, not on theories) estimate of σ_{ob}^2 , which is the sum of σ_o^2 plus σ_b^2 , taken directly from the forecasts and the observed values. σ_{ob}^2 is used to obtain a reference value to judge if the ensemble spread is adequate. The equations are (the averaging operator $\langle \dots \rangle$ is defined as in Algorithm 1) as follows:

$$\sigma_f^2 = \nu \left\langle \text{diag} \left(\mathbf{S}^f \right) \right\rangle \tag{10}$$

$$\sigma_{ob}^2 = \nu \left\langle \left(\mathbf{y}^o - \mathbf{y}^b \right)^2 \right\rangle. \tag{11}$$

ν is an inflation factor that can be used to obtain better results (e.g., via the optimization of cross-validation scores or other verification metrics). In addition, ν is introduced because Eq. (11) is sensitive to misbehavior in the data when it is applied using data from one single time step. Proper estimates of σ_f^2 and σ_{ob}^2 would require more than just one case, and the ideal situation would be to consider numerous situations characterized by similar weather conditions. Instead, we prefer to stick to P5. The estimation of σ_{ob}^2 is not resistant in the sense defined by Lanzante (1996). A few outliers in Eq. (11) may have a significant impact on σ_{ob}^2 . The introduction of ν makes the estimation procedure more resilient in the presence of outliers and other nonstandard behavior. Equation (11) is used for diagnostics in data assimilation (Desroziers et al., 2005), and it is consistent with P2. The combination of Eqs. (8) and (11) returns a rough empirical estimate of σ_b^2 that is as follows:

$$\sigma_{br}^2 = \nu \frac{\left\langle \left(\mathbf{y}^o - \mathbf{y}^b \right)^2 \right\rangle}{1 + \varepsilon^2}. \tag{12}$$

As a final step, to set σ_u^2 and σ_o^2 , we distinguish between three situations. The first situation is when the ensemble spread is likely to underestimate the actual uncertainty because the background is missing an event or the spread is too narrow. The test condition is $\sigma_f^2 < \sigma_{br}^2$. We will refer to this situation as the ensemble being overconfident or underdispersive. This is the case when a positive σ_u^2 is needed in Eq. (6), and we set its value such that σ_b^2 in Eq. (9) is equal to σ_{br}^2 in Eq. (12) in the following:

$$\begin{aligned} \sigma_u^2 &= \sigma_{br}^2 - \sigma_f^2 \\ &= \nu \left[\left\langle \left(\mathbf{y}^o - \mathbf{y}^b \right)^2 \right\rangle / (1 + \varepsilon^2) - \text{diag} \left(\mathbf{S}^f \right) \right] \end{aligned} \tag{13}$$

$$\sigma_b^2 = \nu \left\langle \left(\mathbf{y}^o - \mathbf{y}^b \right)^2 \right\rangle / (1 + \varepsilon^2) \tag{14}$$

$$\sigma_o^2 = \varepsilon^2 \nu \left\langle \left(\mathbf{y}^o - \mathbf{y}^b \right)^2 \right\rangle / (1 + \varepsilon^2). \tag{15}$$

The second situation is when the ensemble spread is consistent with the empirical estimate of σ_b^2 . The test condition is $\sigma_f^2 \geq \sigma_{br}^2$ and $\sigma_f^2 > 0$. We will refer to this situation as the ensemble spread being adequate. In this case, the background information is given by the ensemble, without adjustments, and is as follows:

$$\sigma_u^2 = 0 \tag{16}$$

$$\sigma_b^2 = \sigma_f^2 = \nu \left\langle \text{diag} \left(\mathbf{S}^f \right) \right\rangle \tag{17}$$

$$\sigma_o^2 = \varepsilon^2 \sigma_f^2 = \varepsilon^2 \nu \left\langle \text{diag} \left(\mathbf{S}^f \right) \right\rangle. \tag{18}$$

Equations (13)–(18) have been written with many details, in a somewhat pedantic way, to emphasize the differences between those two situations. When the ensemble is underdispersive, the sum $\sigma_o^2 + \sigma_b^2$ is bounded by the upper limit σ_{ob}^2 . This is not the case when the ensemble is adequate. It is worth remarking that the test conditions are independent of ν . In fact, for instance, the test condition for the first situation can be equivalently written as $\left\langle \left(\mathbf{y}^o - \mathbf{y}^b \right)^2 \right\rangle > [(1 + \varepsilon^2) \text{diag} \left(\mathbf{S}^f \right)]$.

The third situation is the special case in which the background is deemed as perfect; that is, when all the observed values and all the forecasts, at all observation locations, have the same value. In practice, this occurs in the case of no precipitation. In this case, $\sigma_f^2 = 0$ and $\sigma_{br}^2 = 0$. Errors are not Gaussian in this case, so then Eqs. (6) and (7) are not needed anymore, as discussed in the next section (Sect. 2.2.3).

With reference to the working assumptions stated at the beginning of this section, they can now be reformulated in

Please note the remarks at the end of the manuscript.

more precise mathematical terms by referring to the above definitions and equations. P1 led us to Eqs. (6) and (7) and supported our choice of a grid point by grid point implementation of the algorithm. P2 led us to Eq. (11) and subsequent equations, including the term σ_{ob}^2 . P3 led us to the introduction of ε^2 in Eq. (8). P4 is also a key reason for having an algorithm that can be optimized as a function of the grid point under consideration. Other than that, P4 has not been used explicitly in this section, since it will, in general, affect the specification of Γ^u in Eq. (6). In this section, we do not postulate any formulation of Γ^u as being preferable to another; this depends on the application. P4 led us to the specification of Γ^u in Algorithm 1 as a location-dependent matrix through D_i , which is the length scale determining the decrease rate of the background error unexplained by the forecasts. This length scale is set in both Algorithm 1 and Sect. 3 as a function of the observational network density in the surrounding of the i th grid point. In this sense, D_i is dependent on the characteristics of precipitation as they can be observed by our network. This point is discussed further in Sect. 3.1.6. As far as we know, and as stated in the introduction, this is an innovative part of our interpolation scheme since most of the other schemes do postulate that a single analytical correlation function or semi-variogram is valid for the whole spatial domain considered. P5 led us to the introduction of ν in Eqs. (10) and (11).

2.2.3 Analysis procedure

The expressions for the analysis and its error variance are direct results of the linear filter theory (Jazwinski, 2007), and they are derived in several books based on different formulations (e.g., Tarantola, 2005; Kalnay, 2003; Carrassi et al., 2018). The analysis at the i th grid point is equal to the background plus a weighted average of the p innovations, while the analysis error variance is derived from the error covariance matrices as follows:

$$\mathbf{x}_i^a = \mathbf{x}_i^b + \mathbf{G}_{i,:}^b \left(\mathbf{S}^b + \mathbf{R} \right)^{-1} \left(\mathbf{y}^o - \mathbf{y}^b \right) \quad (19)$$

$$\left(\sigma^2 \right)_i^a = \mathbf{P}_{ii}^b - \mathbf{G}_{i,:}^b \left(\mathbf{S}^b + \mathbf{R} \right)^{-1} \left(\mathbf{G}_{i,:}^b \right)^T \quad (20)$$

Equations (19) and (20) are also typical of optimal interpolation, and the formulation used is similar to the one adopted by Uboldi et al. (2008), which follows from Ide et al. (1997). It is worth remarking that the background used in Eq. (19) is the ensemble mean, since we have assumed $\mathbf{x}^b = \mathbf{x}^f$ in Sect. 2.2.1. The ensemble members are used to determine the background error covariance matrices. The method is a modified version of EnOI (Evensen, 2003), where an ensemble of synchronous realizations is considered instead of a time-lagged ensemble approach. As an additional difference be-

tween EnSI-GAP and other methods, it should be noted that the grid point by grid point implementation makes it possible to modify the interpolation settings to adapt them to the different regions in the domain, as discussed in Sect. 3.1.6.

The special case of a perfect background, as introduced in Sect. 2.2.2, leads to a perfect analysis of $\mathbf{x}_i^a = \mathbf{x}_i^b$. Because all the information available shows an exceptional level of agreement, we have chosen to set the analysis error variance to zero (i.e., background is the truth), such that for those points the analysis probability distribution functions (PDFs) are Dirac's delta functions, and this has consequences for the inverse transformation, as discussed in Sect. 2.3.

2.3 Data inverse transformation

The inverse transformation g^{-1} of g , described in Sect. 2.1 and reported in Eq. (3) for a scalar value of x , is the following:

$$g^{-1}(x) = Q_{\text{Gamma}}(\text{Norm}(x); \alpha_D, \beta_D) - \xi, \quad (21)$$

where $\text{Norm}(x)$ is the Gaussian cumulative distribution function. $Q_{\text{Gamma}}(\dots; \alpha_D, \beta_D)$ is the quantile function for the gamma distribution with shape α_D and rate β_D , which are obtained as described in Sect. 2.1. ξ is a constant. If x is a vector instead of a scalar value, then we apply Eq. (21) to its components.

The inverse transformation at the i th grid point is written as follows:

$$\tilde{\mathbf{x}}_i^a = g^{-1}(\mathbf{x}_i^a). \quad (22)$$

However, we need to back-transform a Gaussian PDF and not a scalar value. Equation (22) returns the median of the gamma distribution associated to the i th grid point. Our goal is to obtain the m vectors of the gamma shape and rate, namely α^a and β^a , respectively. To achieve that, the inverse transformation g^{-1} is applied to 400 quantiles of the (univariate) Gaussian PDF defined by $\tilde{\mathbf{x}}_i^a$ and $(\sigma^2)_i^a$; a similar approach is used by Erdin et al. (2012). Then, a least mean square optimization procedure is used to obtain the optimal shape and rate that better fits the back-transformed quantiles. In the special case of a perfect analysis, the analysis PDF in the original space of hourly precipitation values is a Dirac's delta function, and the analysis is the scalar obtained as in Eq. (21) when $x = \mathbf{x}_i^a$.

Given α^a and β^a , it is possible to obtain the statistics that better represent the distribution for a specific application (e.g., median, 99th percentile, and so on). In Sect. 3, the analysis value chosen is often the mean as it is the value that minimizes the spread of the variance. However, other choices may be more convenient, depending on the applications, as discussed by Fletcher and Zupanski (2006), where, for instance, the mode was chosen as the best estimate. In Sect. 3, we will also consider selected quantiles of the gamma distribution to represent analysis uncertainty.

3 Results

The aim of this section is to provide guidance on the implementation of EnSI-GAP for some applications that we consider important or useful for understanding how it works.

In Sect. 3.1, EnSI-GAP is applied over a one-dimensional grid and in a controlled environment, using synthetic data specifically generated for testing EnSI-GAP on precipitation.

In Sect. 3.2, a second, more realistic, example of application for EnSI-GAP is reported, where the spatial analysis is performed for a case study of convective precipitation over southern Norway. The case study cannot be strictly considered an evaluation of the method since all the available observations are used in the spatial analysis, and it is not possible to validate the predictions where no observations are available. It is an example intended to show the potential of EnSI-GAP for (automatic) weather forecasting or civil protection purposes.

Section 3.3 describes the results of cross-validation experiments over southern Norway. EnSI-GAP performances are evaluated for a period of 5 months centered over summer 2019, i.e., from May to September. The verification scores considered are commonly used in forecast verification and described by several books, such as, for example, Jolliffe and Stephenson (2012). A further useful reference for the scores is the website of the World Meteorological Organization, available at <https://www.wmo.int/pages/prog/arep/wwrp/new/jwgfvr.html> (last access: 13 May 2020).

3.1 One-dimensional simulations

The aim of this section is to show how EnSI-GAP works and to assess its performances with different configurations under idealized conditions. The impacts of Gaussian anamorphosis and different specifications of background error covariances are also investigated. The functioning of the algorithm is shown with the example application to a single simulation. The conclusions on the EnSI-GAP pros and cons are based on the statistics collected over 100 simulations.

3.1.1 Simulation setup

A one-dimensional grid with 400 points and a spacing of 1 spatial unit, or 1 u, is considered. The domain covers the region from 0.5 to 400.5 u, and the generic i th grid point is placed at the coordinate i u. A simulation begins with the creation of a true state, and then observations and ensemble background are derived from it.

The simulation presented here is shown in Fig. 1a. For each grid point, the true value (black line) is generated by a random extraction from the gamma distribution, with the shape and rate set to 0.2 and 0.1, respectively. To ensure spatial continuity of the truth, an anamorphosis is used to link a 400-dimensional multivariate normal (MVN) vector with the gamma distribution. The samples from the MVN

distribution, with a prescribed continuous spatial structure, are obtained from the descriptions by Wilks (2019) in chap. 12.4. The MVN mean is a vector with 400 components all set to zero, and the covariance matrix is determined using a Gaussian covariance function with 10 u as the reference length used for scaling distances. The effective resolution (Sect. 2.2.1) of the truth is then 10 u.

The ensemble background (gray lines in Fig. 1a) on the grid, with 10 members, is obtained by perturbing the truth. The background values at the observation locations are obtained from the members using nearest-neighbor interpolations. For each member, the truth is perturbed by shifting it along the grid by a random number between -10 and $+10$ u, thus simulating the misplacement of precipitation events. Then, the effective resolution of the member is set to be coarser than that of the truth. The true values are multiplied by coefficients derived from a uniform distribution, with values between 0.05 and 2 and a spatial structure function given by a MVN with a Gaussian covariance function, with a reference length extracted from a Gaussian distribution with a mean of 50 u and a standard deviation of 5 u. Two special regions are considered, and they are shown with the bright shading in Fig. 1. In region R1, between 50 and 150 u, each background member follows an alternative truth (i.e., it is literally being derived from a different truth) that is everywhere different from 0 mm. In R1, the background is neither accurate nor precise, and this leads to the occurrence of misses and false alarms. In region R2, between 200 and 300 u, none of the ensemble members simulate precipitation while the true state reports precipitation. In this region, the background is precise but not accurate since the ensemble is missing, or poorly representing, an event which is otherwise well covered by observations. Because we had to ensure the continuity of the background, we have enforced smooth transitions between the two regions and their surroundings. For example, R2 is actually beginning a bit after 200 u and ending a bit before 300 u.

The number of observations (blue dots in Fig. 1a) is set to 40. The observed value at a location is obtained as the true value of the nearest grid point, plus a random noise that is determined as a random number between -0.02 and 0.02 that multiplies the true value. The procedure is consistent with the fact that observation precipitation errors should follow a multiplicative model (Tian et al., 2013). The observation locations are randomly chosen. There are five between 1 and 100 u, 30 between 101 and 300 u, and five between the 301 and 400 u. The distribution is denser in the central part of the domain and sparser closer to the borders.

The effect of the Gaussian anamorphosis is shown in Fig. 1b. The transformed precipitation varies within a smaller range than the original precipitation, thus effectively shortening the tail of the distribution, reducing its skewness, and making it more similar to a Gaussian distribution.

An example application of EnSI-GAP is presented in Algorithm 1. The choices that are kept fixed and that will not

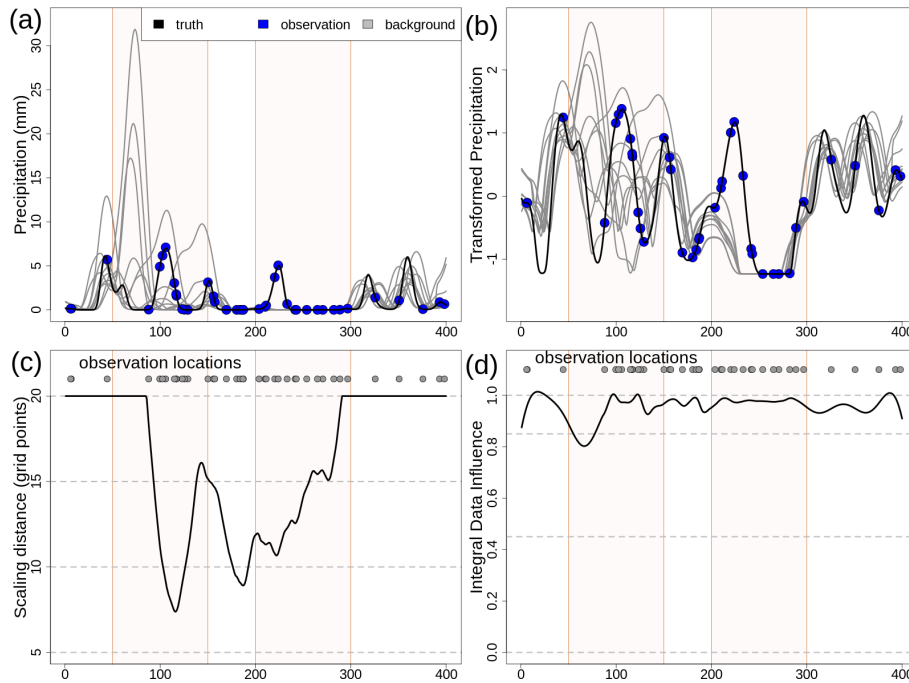


Figure 1. One-dimensional simulation. (a) Precipitation (in millimeters) – truth (black line), observations (blue dots), and background (gray lines). (b) Transformed values. (c) Reference length scale for the scale matrix D_i (units u, as defined in Sect. 3.1). D_i is bounded within 3 and 20 u. (d) Integral data influence (IDI) based on D_i from (c). The two regions, R1 and R2, have been highlighted with different shading in the background of each panel.

vary for the whole Sect. 3.1.1 are described in this paragraph. The localization matrix $\mathbf{\Gamma}^i$ of Eq. (6) is specified using Gaussian functions, taking the form of those used in Algorithm 1 for \mathbf{Z} and \mathbf{V} , with $L_i = 25$ u for all the grid points. The sensitivity of the results to variations in the specification of the scale matrix will be investigated in Sect. 3.1.3; nonetheless, the strategy for determining D_i will always be the same whether we choose to use a Gaussian function, as in Algorithm 1, or an exponential function. D_i is determined adaptively at each grid point, as shown in Fig. 1c, as the distance between the i th grid point and its third-closest observation location. In addition, D_i has been constrained to vary between 5 and 20 u. The tool used to quantify the impact of the spatial distribution of the observations on the analysis is the integral data influence (IDI; Uboldi et al., 2008); this is a parameter that stays close to 1 for observation-dense regions, while it is exactly equal to 0 in observation-void regions. In practice, the IDI at the i th grid point is computed here as the analysis in Eq. (19), when all the observations are set to 1 and the background is set to 0. IDI has been adapted to EnSI-GAP in the sense that only the scale matrix is considered in the calculation of \mathbf{P}^b in Eq. (6) because the part of \mathbf{P}^b , taking into account the atmospheric dynamics, does not depend on the observational network. Where the IDI is close to zero, the analysis is as good as the background. Figure 1d shows

the IDI when D_i is set as the distance between the i th grid point and its third-closest observation location. EnSI-GAP is very sensitive to the tuning of D_i , and its estimation is further discussed in Sect. 3.1.6.

3.1.2 Evaluation scores

The evaluation of analysis versus truth at grid points are evaluated using two scores that are applied over precipitation values. The mean squared error skill score (MSESS) quantifies the agreement between the analysis expected value $\overline{\text{CES}}$ and the truth. The continuous ranked probability score (CRPS) is a much used measure of performance for probabilistic forecasts. The definitions of both scores can be found, for example, in Wilks (2019). The MSESS has been used for studies on precipitation by, for example, Isotta et al. (2019), while applications of CRPS to precipitation can be found, for example, in the paper by Hersbach (2000). The definitions adapted to our case are reported here, in the following:

$$\text{MSESS} = 1 - \frac{\frac{1}{m} \sum_{i=1}^m (\tilde{\mathbf{x}}_i^a - \tilde{\mathbf{x}}_i^t)^2}{\frac{1}{m} \sum_{i=1}^m (\tilde{\mathbf{x}}_i^t - c)^2}; c = \frac{1}{m} \sum_{i=1}^m \tilde{\mathbf{x}}_i^t. \quad (23)$$

$$\overline{\text{CRPS}} = \frac{1}{m} \sum_{i=1}^m \int_0^\infty [F_a(\alpha_i^a, \beta_i^a; y) - F_t(\tilde{\mathbf{x}}_i^t; y)]^2 dy. \quad (24)$$

Please note the remarks at the end of the manuscript.

CRPS is the CRPS averaged over all the grid points. The squared difference is between the continuous cumulative distribution functions (CDFs), namely $F_a(\alpha_i^a, \beta_i^a; y)$, which is the gamma analysis CDF at point i , with the indicated shape and rate parameters, evaluated at the value y ; $F_t(\mathbf{x}_i^t; y)$ is the Heaviside function, which is equal to 0 when $y < \mathbf{x}_i^t$ and equal to 1 when $y \geq \mathbf{x}_i^t$.

3.1.3 Sensitivity analysis on the scaling parameters

A sensitivity analysis on variations in the scaling parameters ν , ε^2 , and in the correlation function defining Γ^u is presented. At the same time, the operation of EnSI-GAP is shown step by step.

The sensitivity study considers three situations which are also used in Figs. 2–6. A reference setup is defined with $\nu = 0.5$ and $\varepsilon^2 = 0.5$. Then, we consider a perturbed situation in which $\varepsilon^2 = 0.1$ and the observations are assumed to be 10 times more precise than the background. Finally, a situation is considered with $\nu = 0.1$, where only a small part of the ensemble spread determines σ_b^2 . In addition, two different functions are used for the specification of the scale matrix Γ^u , namely a Gaussian function and an exponential function. In the scientific literature, both functions have been used to specify correlations for spatial analysis of precipitation. For instance, the Gaussian function is used by (Lussana et al., 2009; Erdin, 2009) and the exponential function by Mahfouf et al. (2007); Lespinas et al. (2015); Soci et al. (2016).

The scaling of the covariances, which in turn determines the weights used in the analysis, is determined by σ_o^2 (Eq. 7) and σ_u^2 (Eq. 6), which are related to σ_b^2 and σ_f^2 . In Fig. 2, the variances are shown, and their values do not depend on the correlation functions; they depend only on ν and ε^2 . In the reference situation, Fig. 2a, the ensemble spread is adequate ($\sigma_u^2 = 0$) for 58 % of the grid points, and it is overconfident between points 160 and 300u; most of these points are in R2. σ_b^2 and σ_o^2 are larger in R1 and R2 than outside those two special regions, as expected, and in R2 σ_b^2 is almost equal to σ_u^2 because the ensemble is missing the precipitation event. On average, $\sigma_b^2 = 0.15$ and $\sigma_o^2 = 0.07$. In the case of $\varepsilon^2 = 0.1$ in Fig. 2b, the percentage of points in which the spread is adequate decreases to 27 %, such that the scale matrix is used more than in the reference situation. The mean values become $\sigma_b^2 = 0.19$ and $\sigma_o^2 = 0.02$. In the case of $\nu = 0.1$ in Fig. 2c, the reduction in σ_b^2 is evident and, on average, $\sigma_b^2 = 0.03$ and $\sigma_o^2 = 0.015$. The percentage of points for which the spread is adequate is determined by ε^2 , then, in Fig. 2c, it is the same as in the reference situation.

The transformed precipitation analysis is shown in Fig. 3, and the analysis in the original precipitation space, after the

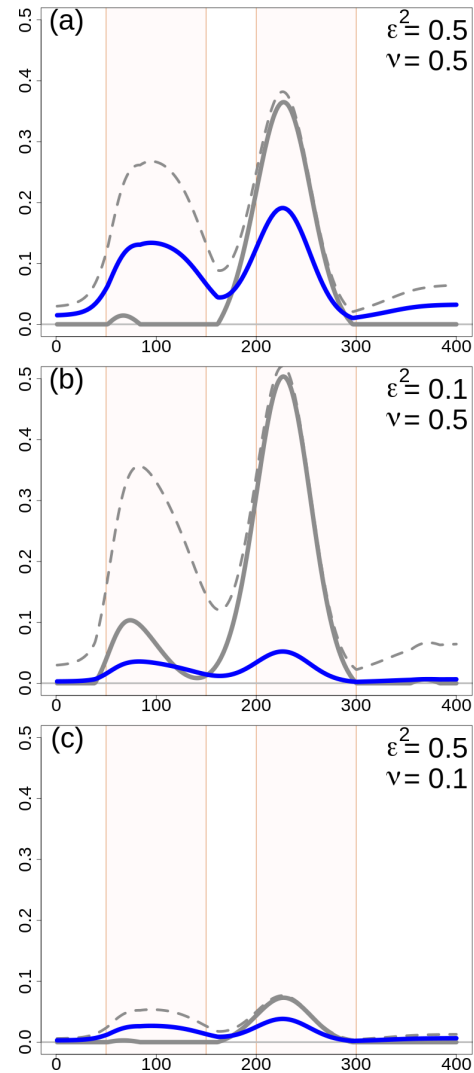


Figure 2. One-dimensional simulation. Error variances (dimensionless quantities) for different configurations of the scaling parameters. The variances shown are σ_u^2 (thick gray line), σ_b^2 (dashed gray line), and $\sigma_o^2 (= \varepsilon^2 \sigma_b^2)$ (blue line). σ_f^2 is the difference between σ_b^2 and σ_u^2 . For all panels, $L = 25u$ in Γ^i and the error variances do not depend on choices on Γ^i or Γ^u . (a) $\varepsilon^2 = 0.5$ and $\nu = 0.5$. (b) $\varepsilon^2 = 0.1$ and $\nu = 0.5$. (c) $\varepsilon^2 = 0.5$ and $\nu = 0.1$. The two regions, R1 and R2, have been highlighted with different shading in the background of each panel.

inverse transformation, is shown in Fig. 4. The layout of the figures is organized such that each row corresponds to the same row in Fig. 2. In the left column a Gaussian function has been used in Γ^u , and in the right column an exponential function has been used.

By comparing Figs. 3 and 4 with Fig. 2, it is possible to study the impact of different choices on the analysis in

Please note the remarks at the end of the manuscript.

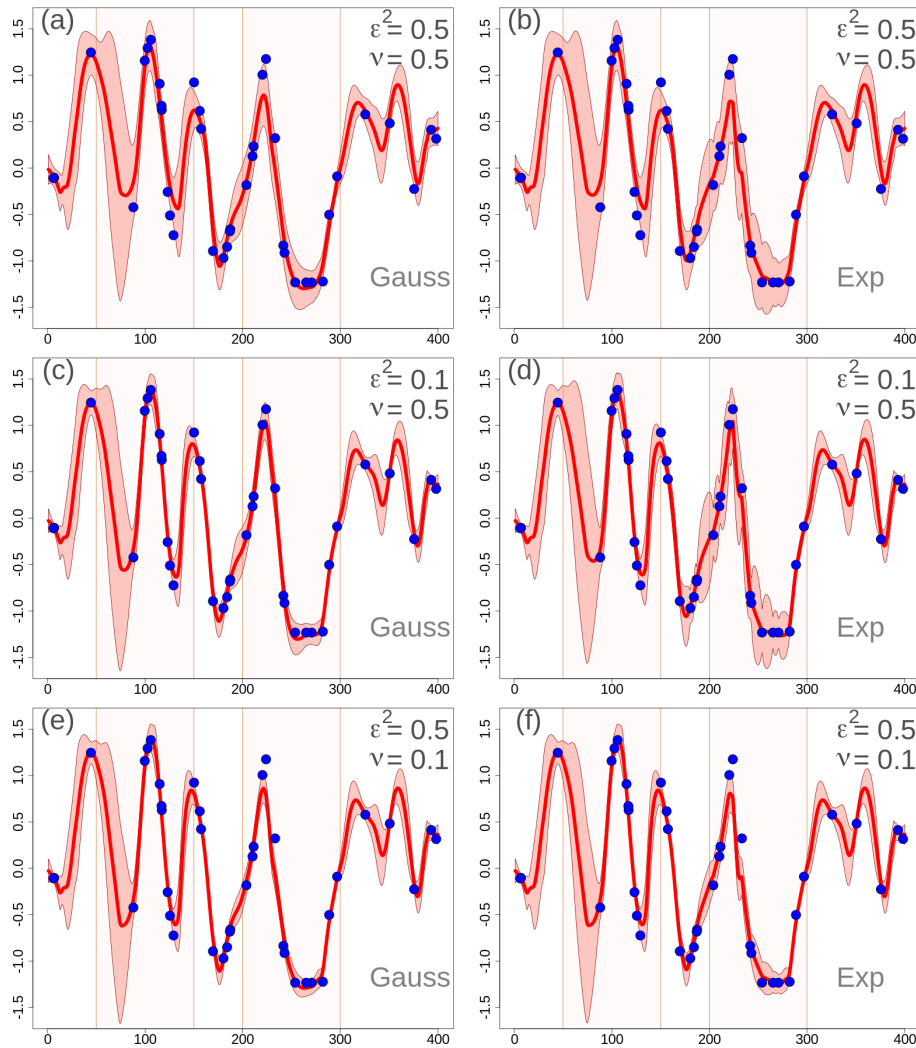


Figure 3. One-dimensional simulation in the transformed precipitation space. Analyses at grid points with different EnSI-GAP configurations. For all panels, $L = 25u$. The values of ν and ε^2 are reported in the panels. Specification of the scale matrix Γ^i – (a), (c), and (e) ^{TS6} have been obtained with a Gaussian function, while (b), (d), and (f) have been obtained with an exponential function. For each panel, the red line is the analysis (expected value), the pink shading shows the interval between the 90th and the 10th percentiles, and the blue dots are the observations as in Fig. 1b. The two regions, R1 and R2, have been highlighted with different shading in the background of each panel.

the transformed space. By increasing (decreasing) the error variances, the analysis spread increases (decreases) too. The comparison between Gaussian versus exponential correlation function shows that, given the same values of ν and ε^2 , the exponential function shows a larger analysis spread. The analysis expected values does not vary significantly among panels that are on the same row, thus indicating that the expected value is not that sensitive to the correlation function chosen. For instance, the MSESS for Fig. 4c is 0.78, while for Fig. 4d it is 0.77. The $\overline{\text{CRPS}}$ for Fig. 4c is 0.43, while for Fig. 4d it is 0.44. For the other panels of Fig. 4, the MSESS and $\overline{\text{CRPS}}$ have lower values. The comparison to the reference situations of Fig. 4a and b show that the analysis expected values in Fig. 4c and d fit the observations better, and

the analysis spread is more likely to include the true values. The situation is the opposite in Fig. 4e and f, where the reference setup performs better.

The analysis of over 100 simulations confirms the considerations we have made above on the basis of a single simulation. If we consider 100 simulations, the results are shown in Table 3 in the EnSI-GAP column. The configuration leading to the best results, in terms of both MSESS and $\overline{\text{CRPS}}$, is the one shown in Fig. 4c. The worst results were obtained when $\nu = 0.1$.

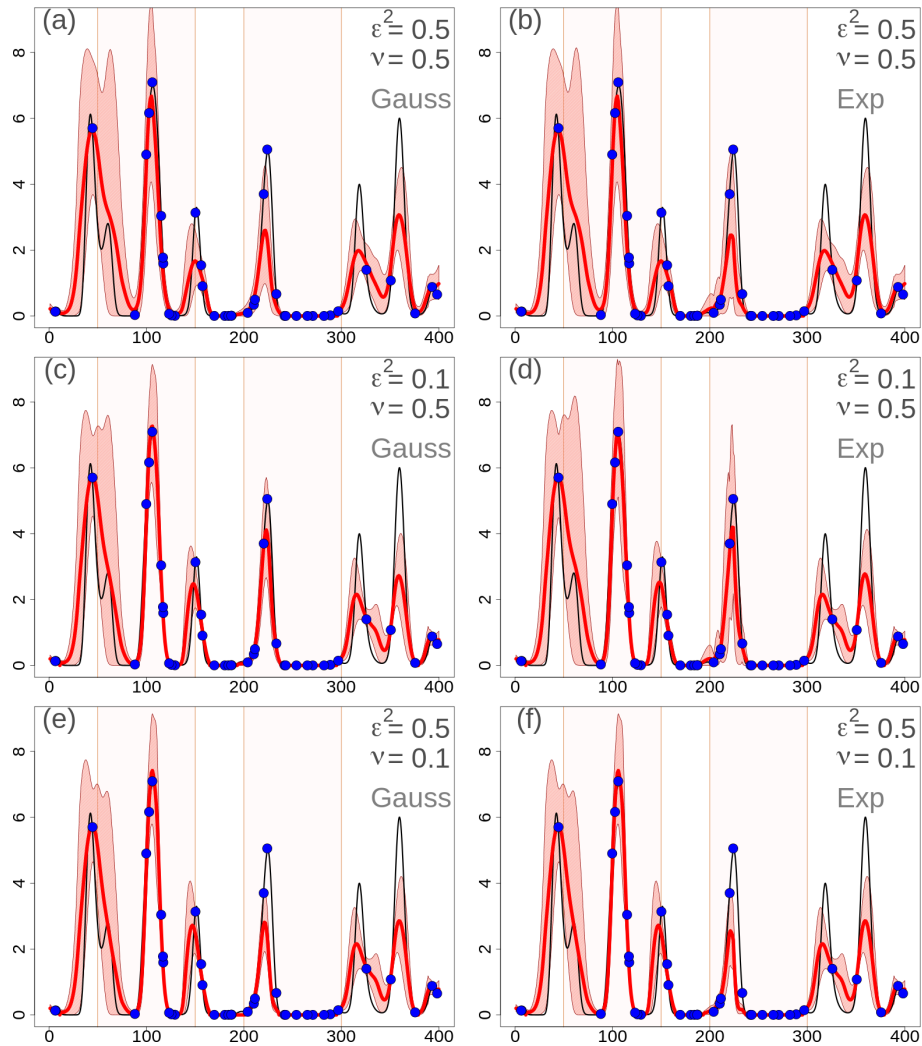


Figure 4. One-dimensional simulation in the original precipitation space (in millimeters). Analyses at grid points with different EnSI-GAP configurations. The layout is the same as in Fig. 3.

Table 3. Summary statistics on the evaluation of the 100 one-dimensional simulations. Results are presented for three modes, namely EnSI-GAP, no transformation, which is EnSI-GAP without applying the Gaussian anamorphosis, and no ensemble, which is EnSI-GAP where the background is the ensemble mean, and the background error covariance matrix is determined solely by the scale matrix. The configurations listed are the same as those that have been used in Figs. 3–6, and the abbreviations have the same meanings (e.g., with reference to Fig. 3, the first row corresponds to (a), the second to (b), and so on). The mean squared error skill score (MSESS; Eq. 23) is positively oriented, with a perfect score being one. The continuous ranked probability score ($\overline{\text{CRPS}}$; Eq. 24) is negatively oriented, with a perfect score being zero. For each configuration and score, the best values are marked in bold. Note: exp – exponential function.

| Mode | EnSI-GAP | | No transformation | | No ensemble | |
|--|-------------|--------------------------|-------------------|--------------------------|-------------|--------------------------|
| | MSESS | $\overline{\text{CRPS}}$ | MSESS | $\overline{\text{CRPS}}$ | MSESS | $\overline{\text{CRPS}}$ |
| $\varepsilon^2 = 0.5, \nu = 0.5$; Gauss | 0.66 | 0.80 | 0.66 | 0.91 | 0.63 | 0.95 |
| $\varepsilon^2 = 0.5, \nu = 0.5$; exp | 0.65 | 0.78 | 0.68 | 0.85 | 0.65 | 0.81 |
| $\varepsilon^2 = 0.1, \nu = 0.5$; Gauss | 0.70 | 0.79 | 0.68 | 0.95 | 0.65 | 1.01 |
| $\varepsilon^2 = 0.1, \nu = 0.5$; exp | 0.71 | 0.72 | 0.71 | 0.80 | 0.73 | 0.71 |
| $\varepsilon^2 = 0.5, \nu = 0.1$; Gauss | 0.66 | 0.92 | 0.67 | 1.04 | 0.61 | 1.33 |
| $\varepsilon^2 = 0.5, \nu = 0.1$; exp | 0.63 | 0.92 | 0.68 | 0.98 | 0.61 | 1.14 |

3.1.4 Considerations on the data transformation

In Fig. 5, the EnSI-GAP results are shown for the same settings used in Sect. 3.1.3, without applying data transformations and just interpolating the original precipitation values.

The layout of Fig. 5 is the same as in Fig. 4. The best results are found in the configurations of Fig. 5c and d, as in Fig. 4. The agreement between analysis expected values and true values is similar to those shown in Fig. 4 in that the differences are small. For instance, the MESS of Fig. 5c is 0.76. The most evident difference is in the spike in analysis spread between 50 and 100 u, which is present in Fig. 5 and absent in Fig. 4. This may indicate that, without data transformation, it is more likely for one to obtain unrealistically large analysis spread.

The comparison of the analysis spread between Figs. 5 and 4 shows also that, without data transformation, it is more likely that the true values fall outside the analysis spread shown in the figure. For example, in Fig. 4d the analysis spread includes the true values for 75 % of the grid points when precipitation is higher than 1 mm; with respect to Fig. 5d, that percentage is 53 %. The CRPS for Fig. 5c is 0.59, while for Fig. 5d is 0.56.

If we consider 100 simulations, the results are reported in the column “no transformation” of Table 3. The MESS is often comparable or even slightly higher than using EnSI-GAP, which confirms that the analysis expected value provides a good fit of the truth – even without data transformation. The benefits of the data transformation are in the better representation of the analysis PDF, as can be seen by comparing the CRPS, because the analysis with the data transformation performs better for all configurations.

3.1.5 Considerations on the use of an ensemble

In Fig. 6, the results are shown when the ensemble background is not considered; instead, a single member or the ensemble mean are considered. In this case, in Eq. (6), \mathbf{P}^f is not considered, and \mathbf{P}^b is determined only by $\mathbf{\Gamma}^u$. Note that, in R2, the differences between Figs. 6 and 4 are very small, since in R2 \mathbf{P}^b is almost equal to $\mathbf{\Gamma}^u$ anyway. In the figure, $\mathbf{\Gamma}^u$ is specified only through an exponential function, which shows better results than the Gaussian function as in the previous two sections. In the left column, the results are shown when the best ensemble member is chosen as the background. The best member is defined as the one that fits the observations better in terms of minimizing the squared deviations between the background and observed values. In the right column, the ensemble mean is chosen as the background.

When comparing the three different configurations, the general considerations are the same as in Sects. 3.1.3 and 3.1.4. The best results have been obtained with $\varepsilon^2 = 0.1$ and

$\nu = 0.5$, in Fig. 6c and d. In particular, the analyses based on the ensemble mean perform better than with the best member, which may sometimes deviate significantly from the truth as it happens between 50 and 100 u. The scores support this conclusion. For Fig. 6c, $\text{MESS} = 0.64$ and $\text{CRPS} = 0.54$. For Fig. 6d, $\text{MESS} = 0.72$ and $\text{CRPS} = 0.50$.

If we consider 100 simulations, the results are reported in the column labeled no ensemble in Table 3, and this is only for the case when the ensemble mean is considered as the background. EnSI-GAP performs better than in the case of a deterministic background for almost all configurations. Only in the cases of $\varepsilon^2 = 0.1$, $\nu = 0.5$, and $\mathbf{\Gamma}^u$ defined through an exponential function, does the analysis performs better without considering the ensemble. In fact, the MESS and CRPS mark this configuration as the one returning the best results among all configurations.

3.1.6 Discussion

If we consider the 100 simulations on the one-dimensional grid, the comparison of results in Table 3 between the different implementation modes (EnSI-GAP, no transformation, and no ensemble) brings us to the following conclusions on the benefits of EnSI-GAP. The use of Gaussian anamorphosis ensures a more accurate probabilistic analysis than without any data transformation, as demonstrated by the fact that EnSI-GAP shows the best CRPS for almost all the configurations. The use of an ensemble in the definition of \mathbf{P}^b allows the analysis to be more resistant to misbehavior in the background, as shown by the better scores obtained by EnSI-GAP for most of the configurations.

The comparison between exponential and Gaussian correlation functions in $\mathbf{\Gamma}^u$ favors the exponential function. From geostatistics, we know that a Gaussian variogram model is infinitely differentiable at the origin (Wackernagel, 2003). This imposes unrealistic smoothness constraints on the analysis and, as a side effect, causes an overconfidence in the analysis, leading to an underestimation of the analysis uncertainty and a tendency to produce high and low values outside the range of observations. Those effects are more evident in places where the observational network is sparse and the spatial analysis scheme is less constrained by the observations. The risks related to the use of a Gaussian covariance are described by Diamond and Armstrong (1984).

The EnSI-GAP implementation in Algorithm 1 requires the specification of four parameters, namely D , L , ν , and ε^2 . In the previous sections, the last two parameters are considered in the sensitivity study. In the last paragraph of this section, some general considerations on the setup of D and L are presented. The optimization of D_i is an important part of EnSI-GAP, as remarked in Sect. 3.1.1. There are classical methods for estimating the statistical structure of background errors as a function of observation location separation

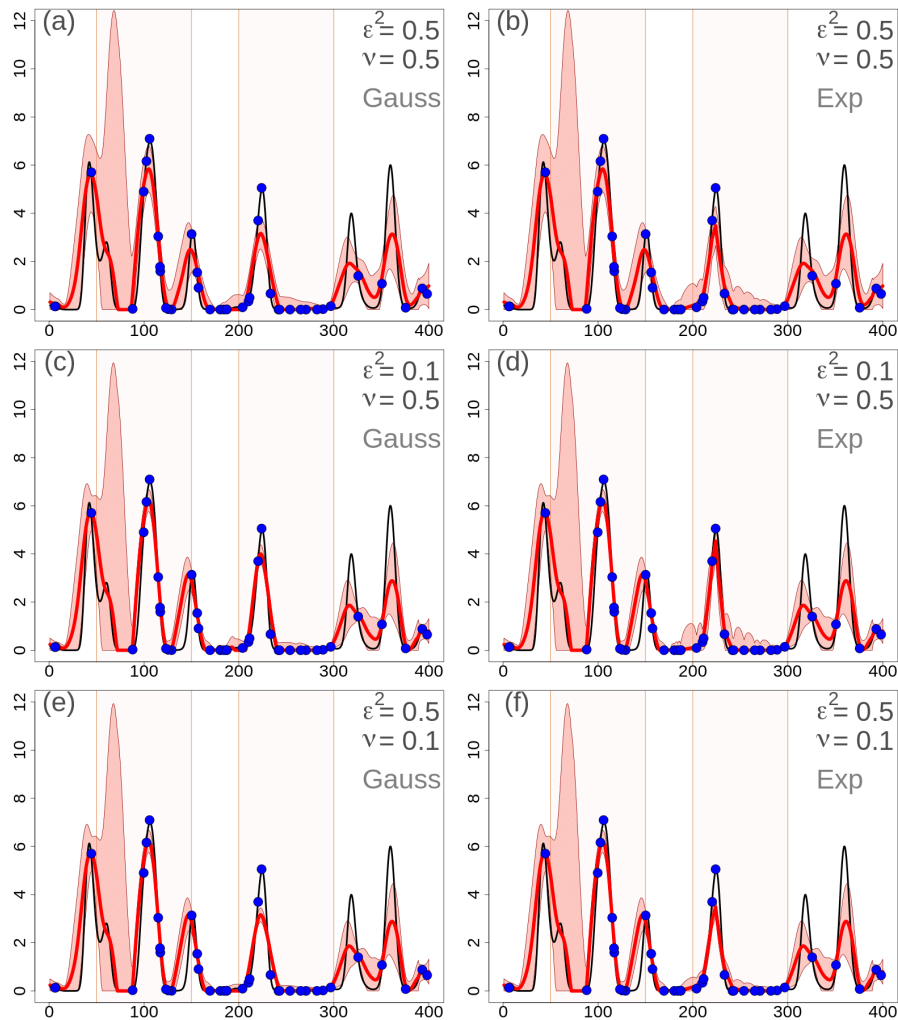


Figure 5. One-dimensional simulation in the original precipitation space (in millimeters). Analyses at grid points with different EnSI-GAP configurations, without applying the data transformation. The layout is the same as in Fig. 3.

ration (Lönnberg and Hollingsworth, 1986), based on minimizing the deviations between theoretical structure functions and empirical estimates from data. When the variation is bounded, the covariance function is equivalent to a variogram, which is used in geostatistics (Wackernagel, 2003). Often, one single value of D_i is considered valid for the whole domain, as, for instance, by Uboldi et al. (2008). In accordance with P4 of Sect. 2.2.2, we want D_i to be dependent on the spatial location. The blending of different variograms, using regional weights, has been done for temperature by Frei (2014); Hiebl and Frei (2016). For precipitation, the method described by Hiebl and Frei (2018) adapts the estimation of variograms for daily precipitation anomaly fields to the density of the observational network. In this document, we follow a simple procedure in which each time step is considered independently from the others (P5; Sect. 2.2.2), and we take advantage of the choice to implement the algorithm based on a grid point by grid point elaboration. The observa-

tions and background are combined into the analysis because we want some observations, not just one observation, to have an impact on the analysis in the surrounding of a point. In Sect. 3.1.1, the IDI has been introduced, and it is shown in Fig 1d. We have configured the simulation such that the IDI is almost always larger than 0.8, which can be roughly interpreted as having at least one observation, or possibly a few, significantly influencing the analysis everywhere over the domain. The procedure we suggest for setting D_i is the following. **CE6** Have the objective of your investigation clear in your mind. Choose a functional form of the scale matrix that suits your objective. Test different strategies for the determination of D_i , based on an inspection of the IDI, showing the regions of the domain that would be more influenced by the observations. Select the range of values for D_i that may lead to acceptable results in the spatial analysis. Refine the optimization of D_i by evaluating EnSI-GAP performances on the basis of skill scores that serve your goals.

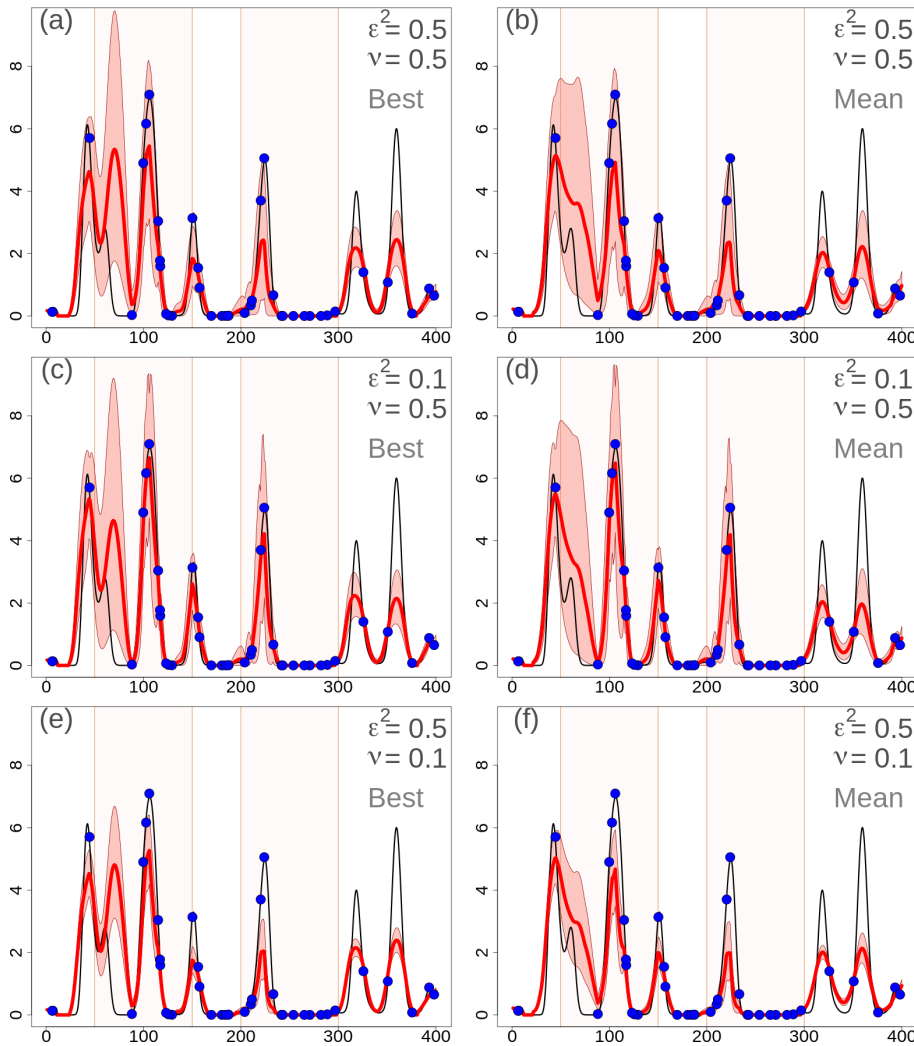


Figure 6. One-dimensional simulation in the original precipitation space (in millimeters). Analyses at grid points with different EnSI-GAP configurations, without considering the whole ensemble. Specification of the scale matrix Γ^i through an exponential function. Γ^f is not used. The layout is similar to Fig. 3, except that here (a), (c), and (e) show the results obtained when considering the background as the best member of the ensemble, while for (b), (d), and (f) the background is the ensemble mean. TS7

L_i depends on the characteristics of the background used, and it should reflect the size of typical precipitation events occurring in a region. If we assume that it is reasonable to use the observational network to refine the effective resolution of the background, then we can imagine that L_i should be set to values larger than D_i .

3.2 Intense precipitation case over southern Norway

The data used in this section are those used in the operational daily routine at the Norwegian Meteorological Institute (MET Norway). The forecasts are from the Met-CoOp Ensemble Prediction System (MEPS; Frogner et al., 2019). MEPS has been running operationally four times a day (00:00, 06:00, 12:00, and 18:00 universal coordinated

time – UTC) since November 2016, and its ensemble consists of 10 members. The hourly precipitation fields are available over a regular grid of 2.5 km. In the articles by Frogner et al. (2019) and Müller et al. (2017), the performances of MEPS in simulating precipitation fields are discussed in detail. MEPS adds more value over deterministic forecasts for summer precipitation events than for winter. The smaller spatial scales (e.g., smaller than ≈ 50 km) have some predictability for up to a 6 h forecast lead time. One of the main findings of the study by Frogner et al. (2019) was that, “with limited predictability of small scales, post-processing should be an integrated part of any system”. The observational data set of hourly precipitation is composed of the following two data sources: precipitation estimates derived from the composite of MET Norway’s weather radar and meteorological

weather stations equipped with ombrometers, such as rain gauges or other devices. The hourly precipitation in situ observations have been retrieved from MET Norway's climate database at <https://frost.met.no/> (last access: 13 May 2020).

In addition to MET Norway's official weather stations, the database includes data collected by several Norwegian public institutions such as, for example, universities (e.g., the Norwegian Institute of Bioeconomy Research – Nibio), the Norwegian Water Resources and Energy Directorate (NVE), the Norwegian Public Roads Administration (Statens vegvesen). As described in the recent paper by Nipen et al. (2020), MET Norway is successfully integrating amateur weather stations temperature data into its operational routine. The method applied is described by Lussana et al. (2019a). Integrating citizen observations into operational systems comes with a number of challenges. The operational systems must be robust and, therefore, rely on strict quality control procedures, such as those described by Båserud et al. (2020). In this study, hourly precipitation observations from the same network of opportunistic sensors are considered and used both in Sect. 3.2 and in Sect. 3.3. The majority of data measured by stations managed by citizens have been collected thanks to the collaboration between MET Norway and Netatmo, a manufacturer of private weather stations. The observations used in Sect. 3.2 and in Sect. 3.3 have been quality controlled by MET Norway; therefore, they are considered as being correct data.

A mass of moist air from the ocean, moving towards the Norwegian mountains, originated from several intense showers over western Norway on 30 July 2019. Southern Norway, the domain considered, is shown in Fig. 7; it measures 373 km in the meridional and 500 km in the zonal directions. The measurements from MET Norway's weather stations show values with more than 20 mm h^{-1} , which is extremely intense given the climatology of the region. In addition, thousands of lightning strikes have been recorded (not shown here), thus confirming the convective nature of the precipitation. Intense events have been observed in the afternoon along the coast and over the nearby mountains, especially in Sogn og Fjordane. This region is shown as the black box in Fig. 7; it extends for 80 km in both meridional and zonal directions. Point A is well covered by observations, and it corresponds to the center of a grid box where a maximum of precipitation has been observed. Point B is the center of a grid box that is not covered by observations and where a maximum of precipitation has been reconstructed by the analysis. The distance between points A and B is 14 km, and their elevations above mean sea level (a.m.s.l.) are 198 m and 911 m at A and B, respectively. In Sogn og Fjordane, damages have been reported (Agersten et al., 2019); they were caused by the heavy rain that also triggered a series of landslides. One of them caused a fatality when a driver was caught in the debris flow.

The two domains of southern Norway and Sogn og Fjordane have been chosen to showcase two typical situations

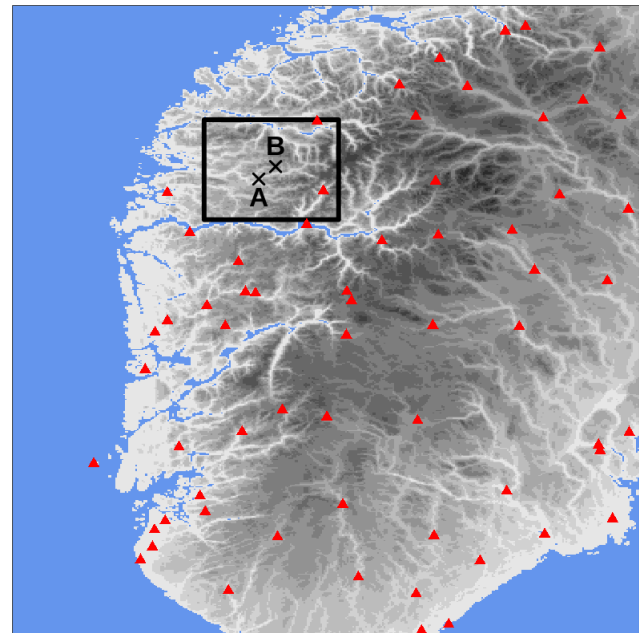


Figure 7. Southern Norway domain used in the simulations of Sects. 3.2 and 3.3. The red triangles mark station locations used for cross-validation in Sect. 3.3. The gray shading indicates the altitude (from lighter gray at 0 m to darker gray at approximately 2400 m above mean sea level – a.m.s.l.). The blue shading indicates the sea. The black box delimits the Sogn og Fjordane domain shown in Figs. 11 and 12; the crosses mark the two points, A and B, referred to in the following.

that can be found in an operations center. In both domains, the focus is on the representation of hourly precipitation patterns at the mesoscale, as defined by Thunis and Bornstein (1996); Stull (1988), though we will focus on different parts of the mesoscale over different domains. Southern Norway is used to show that the variability in the fields represented by the forecast ensemble members mostly involves the meso- β part of the mesoscale (i.e., spatial scales from 20 to 200 km). Weather forecasters are used to making decisions on the basis of information at such scales. Sogn og Fjordane is a domain where high-resolution information is needed to support fine-scale analysis by, for example, civil protection authorities. In this case, we will study precipitation patterns at the meso- γ scale (i.e., from 2 to 20 km).

3.2.1 EnSI-GAP setup

Algorithm 1 has been used over a grid with 2.5 km of spacing, which is the resolution of the MEPS grid (see Sect. 3). The parameters are $\varepsilon^2 = 0.1$, $\nu = 0.1$, $p_{\text{mx}} = 200$, and $L_i = 50 \text{ km}$ constant. A Gaussian function has been used in \mathbf{I}^u . D_i is estimated adaptively on the grid as the distance between the grid point and the 10th closest observation location with upper and lower bounds of 3 and 10 km, respectively. The

settings are such that the analyses would stay much closer to the observations than to the forecasts, where observations are available. The analysis uncertainty will reflect, locally, both the forecast ensemble spread and the averaged innovation. The two parameters of p_{mx} and D_i are used to limit the number of observations that can influence the analysis at a grid point. The localization parameter, L_i , is set to a rather large value, such that the dynamics of the forecasts ensemble are evident in the results. The observation error covariance matrix of Eq. (7) is defined with a diagonal $\mathbf{\Gamma}^o$, which is a situation where radar-derived and in situ observations are assumed to have the same precision; moreover, we are ignoring the spatial correlation of radar-derived observation errors. An investigation of spatially correlated radar-derived observation errors is outside the scope of this study. Note that those settings are useful for the illustration of the method, while for operational applications other settings may be more appropriate, such as a smaller value of L_i or a more sophisticated characterization of the observation errors, for example.

3.2.2 Data transformation

As an example of application, the Gaussian anamorphosis described in Sect. 2.1 is applied here to the transformation of hourly precipitation over Sogn og Fjordane on 30 July 2019 at 15:00 UTC. The procedure is sketched in Fig. 8. In Fig. 8a, the distribution of values for an arbitrary ensemble member is shown. In Fig. 8b, the empirical CDFs of the 10 ensemble members are shown as gray dots, and the pink lines represent the gamma CDFs that better approximate each empirical CDF. The values of the gamma shape and rate are then averaged to obtain α_D and β_D , which are reported in the figure. Figure 8c displays the CDF for the standard normal, which is the target CDF in our transformation scheme. Finally, Fig. 8d shows the distribution of the transformed values for the background ensemble mean, which is used as the background for the analysis in Eq. (19). In Fig. 8a and d, the distribution of values for the observations is also shown, though the values are not used for the estimation of the gamma parameters. The effects of the Gaussian anamorphosis in adjusting the distribution of values into a bell-shaped distribution are clearly evident.

The four different steps of the data transformation for an arbitrary value, at approximately 2 mm h^{-1} , are also highlighted with circles to guide the reader in the order of the application of each step.

3.2.3 Southern Norway

Figure 9 shows the hourly precipitation data for 30 July 2019 at 15:00 UTC over southern Norway. The observational data are shown in Fig. 9a. For each grid box, the average of the radar-derived precipitation and in situ measurements within that box is shown. Note that the box-averaged observations are used only for illustration because the analysis is using

each observation. Grid points that are not covered by observations are marked in gray. In Fig. 9b, the background ensemble mean derived from a 10-member ensemble forecast is shown, while six of the 10 ensemble members are shown in Fig. 10. The 10-member ensemble shows realistic precipitation fields; moreover, they are rather similar, at least in terms of the weather situation at the meso- β scale. Weather forecasters can be quite confident in stating that heavy precipitation is likely to occur over western and southern Norway, while is less likely over eastern Norway. The forecast uncertainty is large enough that it is difficult to predict exactly which subregion will be affected by the most intense showers. The observations confirm that showers occur along the coast of western Norway, and that the most intense precipitation event is located in Sogn og Fjordane (the black box in Fig. 7; note that approximately half of the box is not covered by observations). Figure 9c shows the analysis, specifically the analysis mean at each grid point. In this case, the spatial analysis acts almost as a gap filling procedure to fill in empty spaces in between observations with the most likely precipitation values. The analysis of precipitation is consistent with the impacts of the intense weather event described in the report by Agersten et al. (2019). As prescribed by our EnSI-GAP settings, the analyses over observation-dense regions are not that different from the observed values.

3.2.4 Sogn og Fjordane

One of the main innovations of EnSI-GAP, compared to traditional spatial analysis methods (Hofstra et al., 2008), is the specification of anisotropic background error covariances between grid points through nonstationary covariance matrices. Two visual representations of the correlations associated with those covariances are shown in Fig 11 for points A and B. With reference to \mathbf{P}^b , the background error correlations between the generic i th grid point and the other grid points, evaluated at the i th grid point, are the i th row (or column) of the correlation matrix $\mathbf{\Gamma}^b$, which is obtained as follows:

$$\mathbf{\Gamma}^b_{i,:} = \frac{\mathbf{P}^b_{i,:}}{\sqrt{\mathbf{P}^b_{i,i}} \sqrt{\text{diag}(\mathbf{P}^b)}}. \quad (25)$$

The correlations are shown instead of the covariances because we are interested in the shape of the covariance patterns, and correlation is a quantity which is then more correct to compare between the two points. For visualization purposes, in Fig 11 the correlations have been downscaled over a finer-resolution grid to highlight asymmetries. The closest 200 observations are shown with different symbols, depending on rain occurrence. The two maps in Fig. 11 are rather different. For point A, the correlation extends more to the west than to the east. The point is located in a valley floor, which is rather sheltered from the main atmospheric

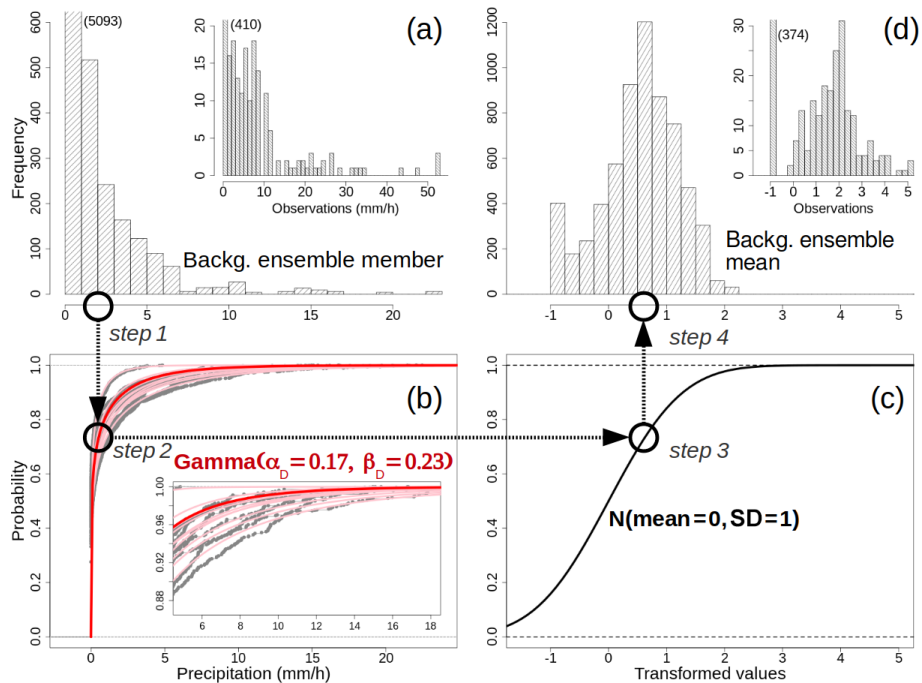


Figure 8. Data transformation procedure. Example for 30 July 2019, 15:00 UTC, hourly precipitation totals over Sogn og Fjordane (see Fig. 7). **(a)** The histograms with the frequencies of occurrence for one member of the ensemble forecast and the observed values. The numbers in parentheses indicate the values of the truncated bins. **(b)** The cumulative distribution functions (CDFs) for the 10 forecast ensemble members – the empirical CDFs are shown as gray dots, and the best-fitting Gamma CDFs are shown as pink lines. The final Gamma CDF used in the Gaussian anamorphosis is shown with the red line, and the parameters are reported. The inset at the bottom right shows a magnified section of the main graph. **(c)** The standard Gaussian CDF. **(d)** The distributions of transformed values for the background ensemble mean and the observations. The four different steps of the data transformation for an arbitrary value of precipitation (approximately 2 mm h^{-1}) are indicated by circles and arrows.

flow, and this seems to be represented in its correlation pattern which rapidly decays as we move upwards. The area where the correlation is higher than 0.6 is confined within approximately 5 km in any direction from point A. At point B, the situation is different, and the correlation extends more to the east than to the west. The point is located on a plateau at 911 m and the correlation pattern follows the main atmospheric flow from west to east. The no precipitation observations 20 km northeast of point B have correlations that are comparable to those of observations at 10 km west of B.

The evolution in time of the hourly precipitation fields is shown in Fig. 12 for observations, background, and analysis at three different times, namely 14:00, 15:00, and 17:00 UTC. It is worth noticing that the example used to illustrate the data transformation process in Fig. 8 refers to the Sogn og Fjordane domain at 15:00 UTC. The background is smoother than the observed field and shows scattered showers for 14:00 and 15:00 UTC; then, a wider precipitation cell over point B is shown at 17:00 UTC. The observed fields show a large variability over short distances, and the difference between two adjacent points can be as large as 30 mm h^{-1} . According to P4 of Sect. 2.2.2, in data-dense areas we would like the analysis to stay closer to the observed

value than in data-sparse areas. Point A is in a densely observed area, while point B is almost in the middle of the observation-void region, and the closest observations are located at a distance of approximately 10 km. D_i at point A is closer to 3 km, while at point B it is closer to 10 km. This ensures a higher effective resolution at point A than at point B. At 14:00 UTC, the observed value at point A (from radar-derived estimates) is over 30 mm h^{-1} , and a sharp gradient from southwest to northeast is evident. The gradient is so intense that the nearby points southwest of point A, only 3 km apart, show almost no precipitation. The background indicates that a maximum of the field can occur between point A and B. The analysis matches the observations, smoothing out their spatial variability, such that at point A the analysis value is less than 10 mm h^{-1} . A precipitation maximum of more than 30 mm h^{-1} has been reconstructed in the analysis between points A and B, which is consistent with the gradient in the observations and the pattern in the background. At 15:00 UTC, the radar-estimated precipitation at point A is again over 30 mm h^{-1} , but there are several points in its surroundings with similar values, such that the local gradient of the field is less steep, and it shows a decrease in precipitation east of point A. The background also shows that

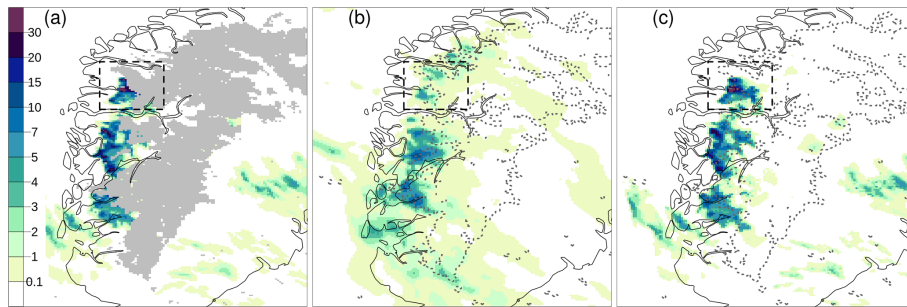


Figure 9. Hourly precipitation totals for 30 July 2019, 15:00 UTC (mm h^{-1}), over southern Norway (see Fig. 7). Observations are shown in (a) over the same grid as the analysis. For each grid cell, the average of the observed values within the cell is shown. Grid points that are not covered by observations are marked in gray in (a), and the dashed gray lines in (b) and (c) delineate the boundary of the gray area shown in (a). The background ensemble mean is shown in (b). The analysis expected value is shown in (c). The color scale is the same for all panels. The Sogn og Fjordane domain of Fig. 7 is shown as the dashed box.

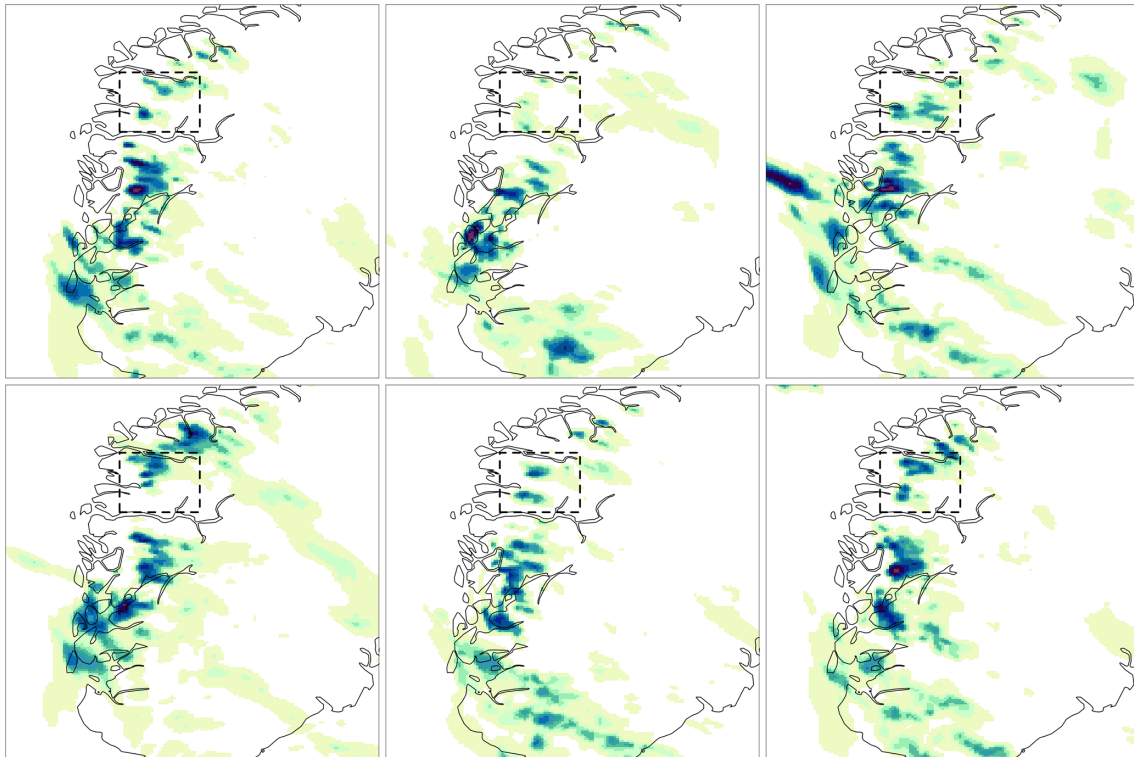


Figure 10. Hourly precipitation totals for 30 July 2019, 15:00 UTC (mm h^{-1}), over southern Norway (see Fig. 7) for six of the 10 background ensemble members. The color scale is the same as in Fig. 9. The Sogn og Fjordane domain of Fig. 7 is shown as the dashed box.

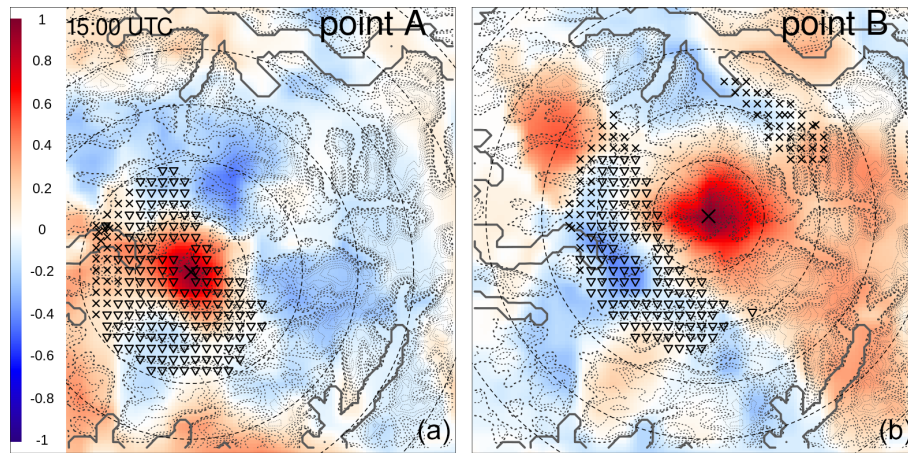


Figure 11. Background error correlations for 30 July 2019, 15:00 UTC, $\Gamma_{i,:}^b$ of Eq. (25) used for spatial analysis of hourly precipitation totals over Sogn og Fjordane (see Fig. 7). The blue–red shading shows the background error correlations. With reference to Fig. 7, (a) shows the background error correlations between point A and the grid points. For point B, the correlations are shown in (b). The symbols show the closest 200 observations, and the triangles are observations of precipitation, while the crosses are observations of no precipitation. The concentric circles have their common center at either point A or B, and they are distance isolines at 10, 20, 30, 40, and 50 km. The thick dark gray lines delimit the fjords. The dashed lines are the contour lines for elevation; the thickest mark the 500 m isoline, and the others have a gradually smaller thickness for 600, 700, 900, 1000, 1100, 1200, 1300, 1400, and 1500 m.

it is more likely to find intense precipitation immediately to the west of point A than to the east. A second precipitation maximum is found in the background, north of point B. The analysis ignores this second precipitation maximum, since it is not supported by observations. The analysis around point A closely matches both the observed values and the gradient, such that the field in the observational-void area does not show significant local extremes. The shape of the area with precipitation rate higher than 30 mm h^{-1} around point A is similar to the pattern of point A correlations higher than 0.6 in Fig. 11. At 17:00 UTC, all the observations report values smaller than 20 mm h^{-1} , and the analysis reconstruct a maximum of over 30 mm h^{-1} at point B. In this case, the observations and background precipitation yes/no patterns are similar, and they both show a southeast to northwest gradient. The analysis estimates a narrow band of precipitation around point B, where values of more than 20 and up to 30 mm h^{-1} are extrapolated. The extrapolated values are consistent with the effects of the extreme event reported by MET Norway (Agersten et al., 2019).

The time series of hourly precipitation at points A and B are shown in Fig. 13. At point A, the graphs show the time series of the (aggregated) observation, background, and analysis, together with the estimated uncertainties. Note that the observation is used in the analysis at point A. At point B, observations are not available. For the background, the percentiles are derived from the 10-member forecast ensemble through a linear interpolation of the empirical cumulative distribution function. For the analysis, the percentiles are derived from the estimated parameters of the gamma distribution representing the marginal probability density function

(PDF) of the analysis at the points. In general, EnSI-GAP forces the analysis to follow the observations more closely than the background, and the analysis uncertainty is smaller than that of the background. As a consequence, the timing of the precipitation onset is also better represented in the analysis. At point A, the PDF of the precipitation analysis, between 10:00 and 13:00 UTC, indicates with certainty that it is not raining. From 14:00 UTC onward, the analysis PDF is a gamma. From 14:00 to 23:00 UTC, the observed values are within the analysis envelopes shown in Fig. 13 for 50 % of the hours, which is a consistent improvement compared to the background. For the other 50 % of the hours, the observed values lie outside the envelopes, and 14:00 and 19:00 UTC are the 2 h for which the deviations between observations and analyses are the most evident. For those 2 h, the local variability in the precipitation field is extremely large, as shown in Fig. 12 for 14:00 UTC, and the observed values at point A are outliers, if compared to their neighbors. With respect to the precipitation yes/no distinction, from 14:00 to 23:00 UTC, the analysis clearly shows that precipitation is occurring at the point, while the background is more uncertain. At point B, the analysis uncertainties between 10:00 and 12:00 UTC are so small that the analysis is exactly 0 mm h^{-1} , despite there are no observations exactly located at that point. From 13:00 UTC onward, the analysis follows a gamma PDF and the spread is wider at point B than at point A. The increased analysis spread reflects the increase in the uncertainty in predicting the tails of the PDF where no observations are available. It is perhaps remarkable that, even for observationally dense regions such as at point A, the analysis spread remains quite large.

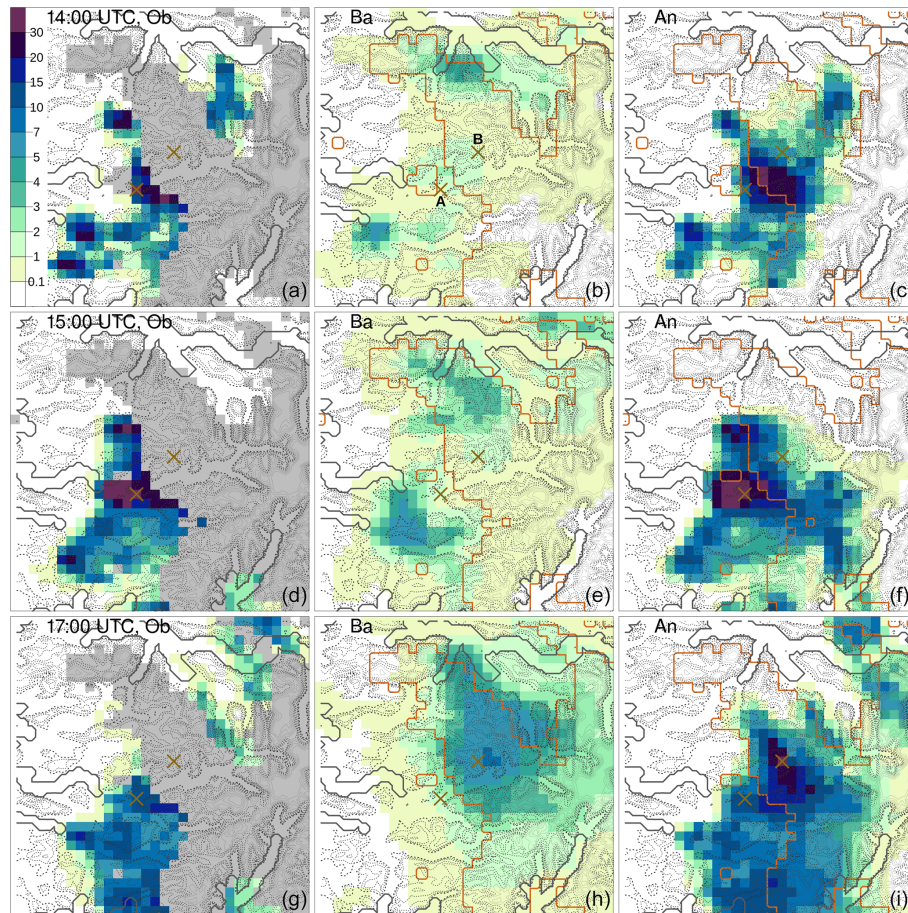


Figure 12. Hourly precipitation totals (in mmh^{-1}) over Sogn og Fjordane (see Fig. 7) for 30 July 2019 at 14:00 UTC (a–c), 15:00 UTC (d–f), and 17:00 UTC (g–i). The panels labeled with Ob (a, d, and g) show the aggregated observed values, as in Fig. 9. The panels with Ba (b, e, and h) show the background ensemble mean. The panels with An (c, f, and i) show the analysis expected value. The crosses mark the A and B points of Fig. 7, which are also shown in (b). The dark orange lines in the panels for Ba and An delineate the boundary of the gray area shown in the panels for Ob. The color scale is the same for all panels. The thick lines and the dashed lines have the same meaning as in Fig. 11.

3.2.5 Discussion

EnSI-GAP can support weather forecasters and civil protection by filling in the empty spaces in the observational networks. The analysis seamlessly merges the high-resolution NWP models with observations, and it remains closer to the observed values where they are available. The predicted fields are easy to interpret by experienced staff that are aware of the spatial distribution of the observations and the characteristics of the NWP considered. The analysis is more precise and accurate than the background where observations are available, as at point A in Sect. 3.2.4, and also for the onset of precipitation. Uncertainty on the estimate at a point increases as the number of nearby observations decreases. The analysis procedure also modifies the field where observations are not available in a credible way, as at point B in Sect. 3.2.4. The uncertainty estimates can be used to have an idea of the extreme values that may occur in a region, which

is useful information both for the nowcasting of an event and in the subsequent reporting phase.

In Sect. 3.2.4, the observed values show strong gradients over small distances. The spatial analysis finds the best estimates of true values, which are areal averages, as discussed in Sect. 2.2.1 and defined in Eq. (4), with spatial supports determined by the EnSI-GAP settings. In Fig. 13, at 14:00 and 19:00 UTC, the representativeness errors of the observations at point A are particularly large with respect to the spatial supports of the true values, such that the corresponding observations are filtered out as outliers by the analysis, and their values are unlikely to occur according to the analysis PDF. If the ensemble is overconfident, according to the definition of Sect. 2.2.2, it is, in principle, possible to modify the analysis PDF by reducing D_i such that the analysis spread would become larger, which in this case would correspond to a reduction in the spatial support for the true values, and the analysis envelope would be more likely to include the ob-

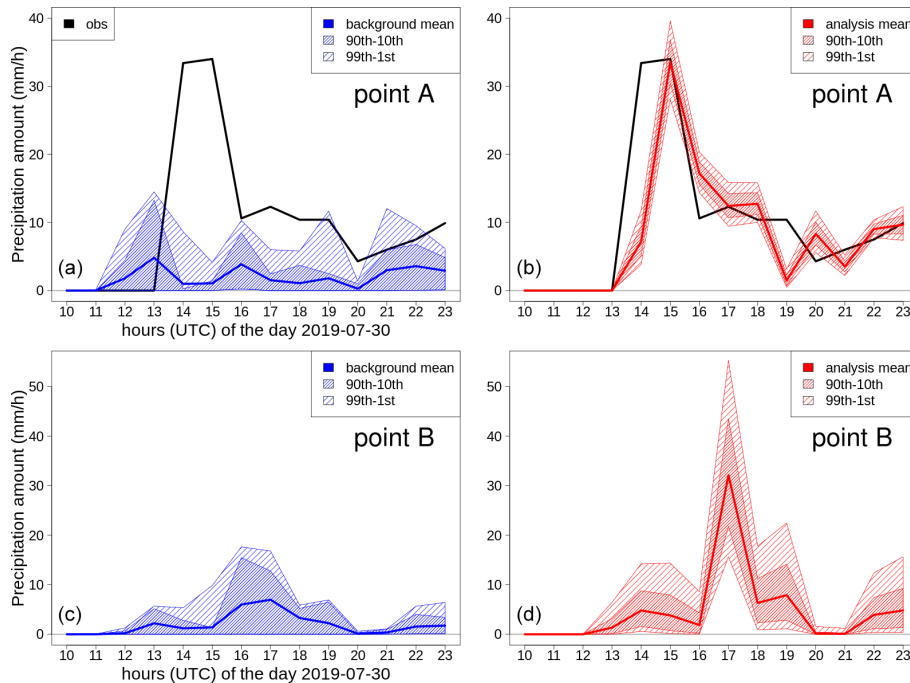


Figure 13. Time series of hourly precipitation totals for the period 30 July 2019, 10:00 to 23:00 UTC, at points A (a, b) and B (c, d) in Fig. 7. Panels (a) and (c) show the background (blue). Panels (b) and (d) show the analysis (red). The blue (red) line shows the background (analysis) mean, the region with densely shaded lines is the difference between the 90th and the 10th percentiles, and the region with sparsely shaded lines is the difference between the 99th and the first percentiles. For point A, the closest observation, which is a radar-derived estimate, is shown (black line). Point B is in a region for which observations are not available.

servations. However, when a single observation is an outlier with respect the neighboring observations, as in Fig. 13 at 14:00 and 19:00 UTC, the tuning of D_i to include the observation in the analysis PDF may lead to unrealistic discontinuous patterns in the analysis due to the sudden jump in the spatial supports used in the definition of true values. In general, a very dense observational network, with observations that are closer than the effective resolution of the background, has the following two effects on the analysis where precipitation varies significantly over small distances: (i) it forces the analysis expected value to stay close to the areal average of the observations, and (ii) it increases the observations and background error variances because of the increased value of the term $\left\langle \left(\mathbf{y}^o - \mathbf{y}^b \right)^2 \right\rangle$ in Eqs. (11)–(18); this will, in turn, increase the analysis uncertainty in Eq. (20). The trade-off between the accuracy and precision of the analysis at a point ultimately depends on the objective of an application.

3.3 Validation over southern Norway through cross-validation experiments

The cross-validation experiments have been conducted over the southern Norway domain shown in Fig. 7. The data sources and grid settings of the experiments are the same as for the case study of the intense precipitation in Sect. 3.2.

The time period considered is from the 1 May to 30 September 2019. The observations from MET Norway’s stations have not been used in the spatial analysis. Instead, because of the expected better quality of those measurements, they have been reserved as independent observations for verification. This cross-validation strategy is widely used in atmospheric sciences (Wilks, 2019). The locations of the 57 weather stations directly managed by MET Norway are shown in Fig. 7 as red triangles. They are distributed all over the domain, and the station network density is higher along the coast and sparser on the mountains because of the inherent difficulties in operating weather stations there.

3.3.1 EnSI-GAP setup

The EnSI-GAP Algorithm 1 has been used. The spatial analysis predicts values at those station locations used for cross-validation. The fixed parameters in this implementation are $p_{\text{mx}} = 200$ and $L_i = 50$ km. A Gaussian function has been used in Γ^u . D_i is estimated adaptively at each location as the distance between that point and the 10th closest observation location, with upper and lower bounds of 3 and 10 km, respectively.

The parameters that are allowed to vary and that are the objective of the sensitivity analysis that follows are ε^2 and ν .

There is an important difference here with respect to Sect. 3.2; in this example, the radar-derived estimates are assumed to be less precise than the in situ observations but more precise than the background. The in situ observations are assumed to be 10 times more precise than the background; thus, ε^2 is set to 0.1, as in Sect. 3.2. However, the radar-derived observations are assumed to be only two times more precise than the background, or, in other words they are five times less precise than the in situ observations, and the elements of the diagonal matrix $\mathbf{\Gamma}^0$ corresponding to radar observations are set to five, instead of one as for the in situ observations. The background ensemble and analysis PDF values considered are those extracted at the locations of stations used for the cross-validation.

3.3.2 Cross-validation statistics

Figure 14 shows the distribution of values for selected percentiles of the background ensemble and analysis PDF as a function of the independent observations. The distribution of the observed values has been divided into intervals; they are (units of mm h^{-1}) 0–0.1, 0.1–0.5, 0.5–1, 1–2, 2–3, 3–5, 5–10, and 10–35. The number of samples within each interval is shown in Fig. 14a. Note the logarithmic scale on the y axis. Most of the observations are smaller than 1 mm h^{-1} ; nonetheless, there are still more than 1000 values that are greater than 1 mm h^{-1} . Considering an arbitrary observation interval for each probabilistic prediction, either for background or analysis, we have computed the following percentiles: 10th, 25th, 50th, 75th, and 90th. The black line in Fig. 14 shows the average median within each interval, while the regions between the 90th and the 10th percentiles and the 75th and the 25th percentiles are shown with gray shading. The diagonal (1 : 1) ideal line is shown as a dashed line. The background is shown in Fig. 14a. The background envelope deviates significantly from the diagonal, especially for values greater than $2\text{--}3 \text{ mm h}^{-1}$. The analysis PDFs are shown in the other panels for different EnSI-GAP configurations that are clearly indicated within each panel. The angular coefficients of the regression lines that better fit the analysis medians are reported in Fig. 14b–d. In all cases, the medians are closer to the diagonal for the analyses than for the background. The analysis biases that are conditional to the observations are always smaller than that of the background. As expected, by giving more weight to the observations, with $\nu = 1$ and $\varepsilon^2 = 0.1$, the analysis bias conditional to the observations decreases. If we compare different analysis configurations, the medians vary less than the other percentiles, and this indicates that variations in the EnSI-GAP configuration impact on the spread of the analysis PDF (i.e., analysis uncertainty) more than on its central moment. Figure 14b and c show the two extreme situations, while Fig. 14d displays an intermediate situation. The uncertainty is more sensitive to variations over ν than over ε^2 . In the case of $\nu = 0.1$ and

$\varepsilon^2 = 0.1$, the angular coefficient of the regression line approximating the analysis median reaches its the best value; however, the analysis spread is small, and the independent observations fall above the 90th percentile. In the case of $\nu = 0.1$ and $\varepsilon^2 = 0.1$, the angular coefficient of the regression line has the best value. For the two cases with $\nu = 1$, the independent observations fall into or around the 90th percentile of the analysis. Once again, it is the specific application that would determine the best combination of parameters to use.

Figure 15 shows the equitable threat score (ETS) for the background and analysis means. A total of four different analysis configurations are shown. The independent observations are used to judge if events have occurred. The condition defining the “yes” event for either observation or prediction is that the corresponding value must be higher than the precipitation threshold specified on the x axis. For all predictions, it is more likely that a predicted “yes” event corresponds to an observed “yes” event for smaller thresholds than for the higher ones. The added value of the analysis over the background is evident for all configurations. The two configurations with $\nu = 1$ present similar ETS curves, though the one with $\varepsilon^2 = 0.1$ performs better. The same holds true when $\nu = 0.1$, though, in this case, the ETS is more sensitive to variations in ε^2 , and the analysis performance decreases faster with the increase in ε^2 .

4 Conclusions

The ensemble-based statistical interpolation with Gaussian anamorphosis (EnSI-GAP) applies the inverse problem theory to the spatial analysis of hourly precipitation. Numerical model output provides the prior information, and specifically, we have considered ensemble forecasts that have been combined with radar-derived estimates and in situ observations. EnSI-GAP has been applied on data sets that are typically available within national meteorological services. In addition, opportunistic sensing networks based on citizen observations have been considered. The precipitation representation is a synthesis of all the data available. Thanks to the diffusion of open data policies, the same data sets are nowadays also available in real time to the general public. For instance, MET Norway provides free access to the weather forecasts and the radar data used in this article via <https://thredds.met.no/TS9>, while in situ observations, except for the citizen observations, are available via <https://frost.met.no/TS10>.

EnSI-GAP assumes the precipitation fields to be local, stationary, and transformed Gaussian random fields. The marginal distribution of precipitation at a point is a gamma distribution, which is different for each point. Gaussian anamorphosis is used to preprocess data in order to better comply with the requirements of linear filtering. A special case is considered where uncertainties are so small that

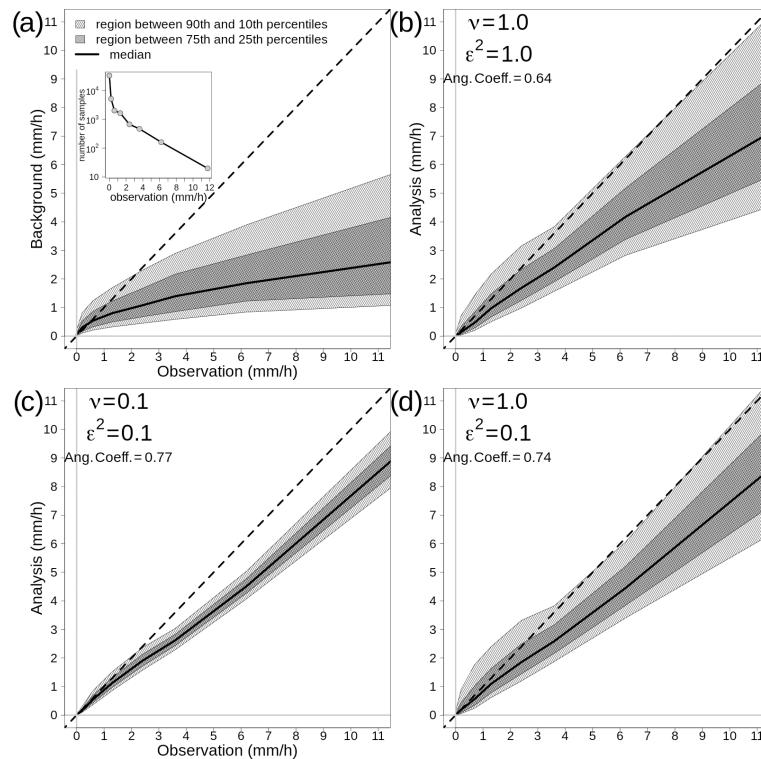


Figure 14. Summer 2019 hourly precipitation statistics for the cross-validation experiments. **(a)** Background versus observations. **(b)** Analysis $\varepsilon^2 = 1$ $\nu = 1$ versus observations. **(c)** Analysis $\varepsilon^2 = 0.1$ $\nu = 0.1$ versus observations. **(d)** Analysis $\varepsilon^2 = 1.0$ $\nu = 0.1$ versus observations. The independent observations have been divided into classes, and the number of samples within each class is shown in the inset of **(a)**. Within each class and for each probabilistic prediction, several percentiles have been computed. The regions between the average of the 90th and the 10th percentiles are shown with the light gray shading. The regions between the average of the 75th and the 25th percentiles are shown by the dark gray shading. The thick black line indicates the average of the medians. The dashed black line is the diagonal (1 : 1) line. The angular coefficients of the best-fitting lines passing through the origins and better approximations of the averages of the medians are shown; for the background in **(a)**, it is 0.26 (not shown in the panel).

the returned analysis values have delta functions as their marginal distributions.

EnSI-GAP considers each hour independently, and it requires the specification of four parameters that can vary across the domain. The implementation is designed to run in parallel on a grid point by grid point basis. Despite the small number of parameters to optimize, the spatial analysis scheme is flexible enough that it can also be applied when the background ensemble is not representing the truth satisfactorily. An important case is when, in a region, all the ensemble members show no precipitation, while the observations report precipitation. By adding a scale matrix to the flow-dependent background error covariance matrix, the analysis can predict precipitation – even where the background is sure that it is not occurring.

The examples of the applications presented allow for a better understanding of the characteristics of EnSI-GAP, and they show how the statistical interpolation can be adapted to meet specific requirements. It can be used to fill in the gaps between observation-rich regions to obtain a continuous precipitation field. The analysis expected value is available ev-

erywhere, as it is the background, and in observation-dense regions it can be as accurate as the observations. Thanks to the data transformation, the spread of the analysis PDF is less likely to become unrealistically large either because of large model errors or large variability in observed small-scale precipitation. Within certain limits determined by the spatial distribution of the observational network, the analysis envelope at a point can be tuned such that it is representative of the distribution of precipitation values determined by atmospheric processes occurring at smaller spatial scales than those resolved by the background. For instance, in an observation-void region, the EnSI-GAP analysis PDF at a point provides a better estimate than the background for the probability of precipitation exceeding a threshold by an observation hypothetically placed at that point. This is an important result, especially when high-impact weather is involved.

Data availability. Some of the data sets used in Sects. 3.2 and 3.3 are freely available online [TS11](https://doi.org/10.5194/tsg-2020-10). MET Norway provides free access to the weather forecasts at <https://thredds.met.no/thredds/catalog/>

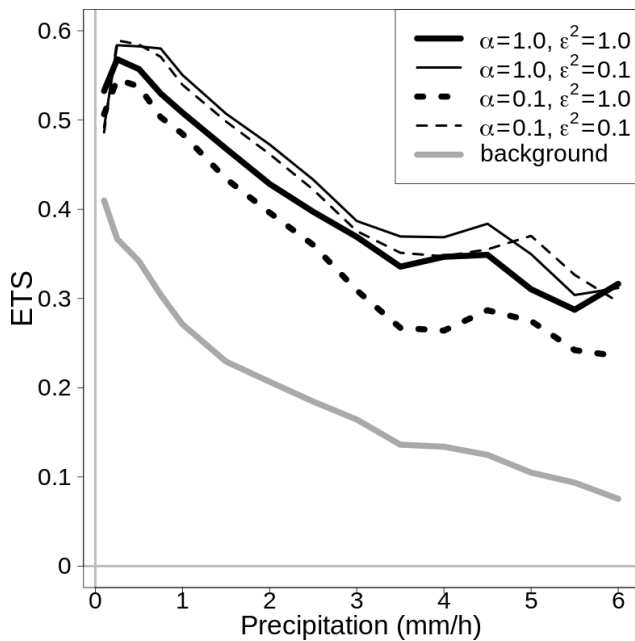


Figure 15. Equitable threat score (ETS) for summer 2019 hourly precipitation, as obtained through the cross-validation experiments. The black lines are the ETS curves for the analysis mean values, as indicated in the legend. The ETS curve for the background is the gray line. The precipitation thresholds defining the “yes” events are reported on the x axis.

meps25epsarchive/catalog.html (Norwegian Meteorological Institute, 2021a) [TS12](#); the hourly precipitation derived from the Norwegian composite of weather radars can be found at <https://thredds.met.no/thredds/catalog/remotesensingradaraccr/catalog.html> (Norwegian Meteorological Institute, 2021b) [TS13](#); and the archive of Norwegian historical weather and climate in situ observations is available at <https://frost.met.no/> [TS14](#). Due to distribution restrictions imposed by some of the providers, opportunistic sensing networks, such as citizen observations, are not freely available online.

Author contributions. CL developed EnSI-GAP, tested it on the case studies, and prepared the paper with contributions from all coauthors. TNN and IAS configured EnSI-GAP to work with MET Norway’s data sets, collected in situ observations from opportunistic sensing networks, and quality controlled them. CAE prepared the radar data.

Competing interests. The authors declare that they have no conflict of interest.

Acknowledgements. This research was partially supported by RADPRO (Radar for Improving Precipitation Forecast and Hydropower Energy Production), an innovative industry project funded by the Research Council of Norway (NFR) and partnering hydropower industries. The collaboration between MET Nor-

way and “The Norwegian Water Resources and Energy Directorate” (NVE) within the national project of “Felles aktiviteter NVE-MET 2019–2020 tilknyttet nasjonal flom- og skredvarslingstjeneste” also helped fund this research.

Financial support. [TS15](#)

Review statement. This paper was edited by Alberto Carrassi and reviewed by two anonymous referees.

References

- Agersten, S., Håvelsrud Andersen, A. S., Berger, A. C., Verpe Dyrddal, A., Køltzow, M., and Tunheim, K.: Intense byger med store konsekvenser i Sogn og Fjordane 30 juli 2019, available at: <https://www.met.no/publikasjoner/met-info/met-info-2019> [TS16](#), 2019.
- Amezcuca, J. and Leeuwen, P. J. V.: Gaussian anamorphosis in the analysis step of the EnKF: a joint state-variable/observation approach, *Tellus A*, 66, 23493, <https://doi.org/10.3402/tellusa.v66.23493>, 2014.
- Båserud, L., Lussana, C., Nipen, T. N., Seierstad, I. A., Oram, L., and Aspelien, T.: TITAN automatic spatial quality control of meteorological in-situ observations, *Adv. Sci. Res.*, 17, 153–163, <https://doi.org/10.5194/asr-17-153-2020>, 2020.
- Bertino, L., Evensen, G., and Wackernagel, H.: Sequential Data Assimilation Techniques in Oceanography, *Int. Stat. Rev.*, 71, 223–241, <https://doi.org/10.1111/j.1751-5823.2003.tb00194.x>, 2003.
- Bocquet, M., Raanes, P. N., and Hannart, A.: Expanding the validity of the ensemble Kalman filter without the intrinsic need for inflation, *Nonlin. Processes Geophys.*, 22, 645–662, <https://doi.org/10.5194/npg-22-645-2015>, 2015.
- Carrassi, A., Bocquet, M., Bertino, L., and Evensen, G.: Data assimilation in the geosciences: an overview of methods, issues, and perspectives, *Wiley Interdiscip. Rev. Clim. Change*, 9, e535, <https://doi.org/10.1002/wcc.535>, 2018.
- Chiles, J.-P. and Delfiner, P.: *Geostatistics: Modeling Spatial Uncertainty*, Wiley Ser. Probab. Statist., <https://doi.org/10.1002/9781118136188>, 2012.
- CIMO: WMO Guide to Meteorological Instruments and Methods of Observation, Tech. Rep., World Meteorological Organization, 2014. [TS18](#)
- Crespi, A., Lussana, C., Brunetti, M., Dobler, A., Maugeri, M., and Tveito, O. E.: High-resolution monthly precipitation climatologies over Norway (1981–2010): Joining numerical model data sets and in situ observations, *Int. J. Climatol.*, 39, 2057–2070, <https://doi.org/10.1002/joc.5933>, 2019.
- Desroziers, G., Berre, L., Chapnik, B., and Poli, P.: Diagnosis of observation, background and analysis-error statistics in observation space, *Q. J. R. Meteorol. Soc.*, 131, 3385–3396, <https://doi.org/10.1256/qj.05.108>, 2005.
- de Vos, L. W., Droste, A. M., Zander, M. J., Overeem, A., Leijnse, H., Heusinkveld, B. G., Steeneveld, G. J., and Uijlenhoet, R.: Hydrometeorological Monitoring Using Opportunistic Sensing Networks in the Amsterdam Metropolitan Area, *B. Am. Mete-*

- orol. Soc., 101, E167–E185, <https://doi.org/10.1175/BAMS-D-19-0091.1>, 2020.
- Diamond, P. and Armstrong, M.: Robustness of variograms and conditioning of kriging matrices, *Math. Geol.*, 16, 809–822, <https://doi.org/10.1007/BF01036706>, 1984.
- Dyrddal, A. V., Lenkoski, A., Thorarinsdottir, T. L., and Stordal, F.: Bayesian hierarchical modeling of extreme hourly precipitation in Norway, *Environmetrics*, 26, 89–106, <https://doi.org/10.1002/env.2301>, 2015.
- Erdin, R.: Combining rain gauge and radar measurements of a heavy precipitation event over Switzerland: Comparison of geostatistical methods and investigation of important influencing factors, PhD thesis, Bundesamt für Meteorologie und Klimatologie, MeteoSchweiz, [TS19](https://doi.org/10.1002/qj.3803) 2009.
- Erdin, R., Frei, C., and Künsch, H. R.: Data transformation and uncertainty in geostatistical combination of radar and rain gauges, *J. Hydrometeorol.*, 13, 1332–1346, 2012.
- Evensen, G.: The Ensemble Kalman Filter: theoretical formulation and practical implementation, *Ocean Dyn.*, 53, 343–367, <https://doi.org/10.1007/s10236-003-0036-9>, 2003.
- Evensen, G.: The ensemble Kalman filter, Springer, [TS20](https://doi.org/10.1007/978-1-4020-2554-3) 2006.
- Fletcher, S. J. and Zupanski, M.: A data assimilation method for log-normally distributed observational errors, *Q. J. R. Meteorol. Soc.*, 132, 2505–2519, <https://doi.org/10.1256/qj.05.222>, 2006.
- Fortin, V., Roy, G., Stadnyk, T., Koenig, K., Gasset, N., and Mahidjiba, A.: Ten Years of Science Based on the Canadian Precipitation Analysis: A CaPA System Overview and Literature Review, *Atmosphere-Ocean*, 56, 178–196, <https://doi.org/10.1080/07055900.2018.1474728>, 2018.
- Frei, C.: Interpolation of temperature in a mountainous region using nonlinear profiles and non-Euclidean distances, *Int. J. Climatol.*, 34, 1585–1605, <https://doi.org/10.1002/joc.3786>, 2014.
- Frei, C. and Isotta, F. A.: Ensemble spatial precipitation analysis from rain gauge data: Methodology and application in the European Alps, *J. Geophys. Res.-Atmos.*, 124, 5757–5778, <https://doi.org/10.1029/2018JD030004>, 2019.
- Frogner, I.-L., Singleton, A. T., Køltzow, M. Ø, and Andrae, U.: Convection-permitting ensembles: Challenges related to their design and use, *Q. J. R. Meteorol. Soc.*, 145 (Suppl. 1), 90–106, <https://doi.org/10.1002/qj.3525>, 2019.
- Gandin, L. S.: Complex Quality Control of Meteorological Observations, *Mon. Weather Rev.*, 116, 1137–1156, [https://doi.org/10.1175/1520-0493\(1988\)116<1137:CQCOMO>2.0.CO;2](https://doi.org/10.1175/1520-0493(1988)116<1137:CQCOMO>2.0.CO;2), 1988.
- Gaspari, G. and Cohn, S. E.: Construction of correlation functions in two and three dimensions, *Q. J. R. Meteorol. Soc.*, 125, 723–757, 1999.
- Germann, U. and Joss, J.: Operational Measurement of Precipitation in Mountainous Terrain, 52–77, Springer Berlin Heidelberg, Berlin, Heidelberg, https://doi.org/10.1007/978-3-662-05202-0_2, 2004.
- Greybush, S. J., Kalnay, E., Miyoshi, T., Ide, K., and Hunt, B. R.: Balance and ensemble Kalman filter localization techniques, *Mon. Weather Rev.*, 139, 511–522, 2011.
- Hersbach, H.: Decomposition of the Continuous Ranked Probability Score for Ensemble Prediction Systems, *Weather and Forecasting*, 15, 559–570, [https://doi.org/10.1175/1520-0434\(2000\)015<0559:DOTCRP>2.0.CO;2](https://doi.org/10.1175/1520-0434(2000)015<0559:DOTCRP>2.0.CO;2), 2000.
- Hersbach, H., Bell, B., Berrisford, P., Hirahara, S., Horányi, A., Muñoz-Sabater, J., Nicolas, J., Peubey, C., Radu, R., Schepers, D., Simmons, A., Soci, C., Abdalla, S., Abellan, X., Balsamo, G., Bechtold, P., Biavati, G., Bidlot, J., Bonavita, M., De Chiara, G., Dahlgren, P., Dee, D., Diamantakis, M., Dragani, R., Flemming, J., Forbes, R., Fuentes, M., Geer, A., Haimberger, L., Healy, S., Hogan, R. J., Hólm, E., Janisková, M., Keeley, S., Laloyaux, P., Lopez, P., Lupu, C., Radnoti, G., de Rosnay, P., Rozum, I., Vamborg, F., Villaume, S., and Thépaut, J.-N.: The ERA5 Global Reanalysis, *Q. J. R. Meteorol. Soc.*, 149, 1999–2049, [TS21](https://doi.org/10.1002/qj.3803) <https://doi.org/10.1002/qj.3803>, 2020.
- Hiebl, J. and Frei, C.: Daily temperature grids for Austria since 1961: concept, creation and applicability, *Theor. Appl. Climatol.*, 124, 161–178, <https://doi.org/10.1007/s00704-015-1411-4>, 2016.
- Hiebl, J. and Frei, C.: Daily precipitation grids for Austria since 1961—development and evaluation of a spatial dataset for hydroclimatic monitoring and modelling, *Theor. Appl. Climatol.*, 132, 327–345, <https://doi.org/10.1007/s00704-017-2093-x>, 2018.
- Hofstra, N., Haylock, M., New, M., Jones, P., and Frei, C.: Comparison of six methods for the interpolation of daily, European climate data, *J. Geophys. Res.-Atmos.*, 113, [TS22](https://doi.org/10.1029/2008JD011300) 2008.
- Huang, S., Eisner, S., Magnusson, J. O., Lussana, C., Yang, X., and Beldring, S.: Improvements of the spatially distributed hydrological modelling using the HBV model at 1 km resolution for Norway, *J. Hydrol.*, 577, 123585, <https://doi.org/10.1016/j.jhydrol.2019.03.051>, 2019.
- Ide, K., Courtier, P., Ghil, M., and Lorenc, A.: Unified notation for data assimilation: operational, sequential and variational, *Practice*, 75, 181–189, 1997.
- Isotta, F. A., Begert, M., and Frei, C.: Long-Term Consistent Monthly Temperature and Precipitation Grid Data Sets for Switzerland Over the Past 150 Years, *J. Geophys. Res.-Atmos.*, 124, 3783–3799, <https://doi.org/10.1029/2018JD029910>, 2019.
- Jazwinski, A. H.: Stochastic processes and filtering theory, Courier Dover Publications, [TS23](https://doi.org/10.1002/qj.3525) 2007.
- Jermey, P. and Renshaw, R.: Precipitation representation over a two-year period in regional reanalysis, *Q. J. R. Meteorol. Soc.*, [TS24](https://doi.org/10.1002/qj.3525) 2016.
- Jolliffe, I. T. and Stephenson, D. B.: Forecast verification, Wiley Oxford, [TS25](https://doi.org/10.1002/qj.3525) 2012.
- Kalnay, E.: Atmospheric modeling, data assimilation and predictability, Cambridge University Press, [TS26](https://doi.org/10.1002/qj.3525) 2003.
- Kotlarski, S., Szabó, P., Herrera, S., Rätty, O., Keuler, K., Soares, P. M., Cardoso, R. M., Bosshard, T., Pagé, C., Boberg, F., Gutiérrez, J. M., Isotta, F. A., Jaczewski, A., Kreienkamp, F., Liniger, M. A., Lussana, C., and Pianko-Kluczyńska, K.: Observational uncertainty and regional climate model evaluation: A pan-European perspective, *Int. J. Climatol.*, 39, 3730–3749, [TS27](https://doi.org/10.1002/joc.5249) <https://doi.org/10.1002/joc.5249>, 2017.
- Kuusela, M. and Stein, M. L.: Locally stationary spatio-temporal interpolation of Argo profiling float data, *Proc. Math. Phys. Eng. Sci.*, 474, 20180400, <https://doi.org/10.1098/rspa.2018.0400>, 2018.
- Lanzante, J. R.: Resistant, robust and non-parametric techniques for the analysis of climate data: theory and examples, including applications to historical radiosonde station data, *Int. J. Climatol.*, 16, 1197–1226, 1996.

- Lespinas, F., Fortin, V., Roy, G., Rasmussen, P., and Stednyk, T.: Performance Evaluation of the Canadian Precipitation Analysis (CaPA), *J. Hydrometeorol.*, 16, 2045–2064, <https://doi.org/10.1175/JHM-D-14-0191.1>, 2015.
- Lien, G.-Y., Kalnay, E., and Miyoshi, T.: Effective assimilation of global precipitation: simulation experiments, *Tellus A*, 65, [TS28](https://doi.org/10.1175/JHM-D-14-0191.1), 2013.
- Lönnerberg, P. and Hollingsworth, A.: The statistical structure of short-range forecast errors as determined from radiosonde data Part II: The covariance of height and wind errors, *Tellus A*, 38A, 137–161, <https://doi.org/10.1111/j.1600-0870.1986.tb00461.x>, 1986.
- Lorenc, A. C.: Analysis methods for numerical weather prediction, *Q. J. R. Meteorol. Soc.*, 112, 1177–1194, <https://doi.org/10.1002/qj.49711247414>, 1986.
- Lundquist, J., Hughes, M., Gutmann, E., and Kapnick, S.: Our skill in modeling mountain rain and snow is bypassing the skill of our observational networks, *B. Am. Meteorol. Soc.*, 100, 2473–2490, <https://doi.org/10.1175/BAMS-D-19-0001.1>, 2019.
- Lussana, C., Salvati, M. R., Pellegrini, U., and Uboldi, F.: Efficient high-resolution 3-D interpolation of meteorological variables for operational use, *Adv. Sci. Res.*, 3, 105–112, <https://doi.org/10.5194/asr-3-105-2009>, 2009.
- Lussana, C., Uboldi, F., and Salvati, M. R.: A spatial consistency test for surface observations from mesoscale meteorological networks, *Q. J. R. Meteorol. Soc.*, 136, 1075–1088, 2010.
- Lussana, C., Saloranta, T., Skaugen, T., Magnusson, J., Tveito, O. E., and Andersen, J.: seNorge2 daily precipitation, an observational gridded dataset over Norway from 1957 to the present day, *Earth Syst. Sci. Data*, 10, 235–249, <https://doi.org/10.5194/essd-10-235-2018>, 2018.
- Lussana, C., Seierstad, I. A., Nipen, T. N., and Cantarello, L.: Spatial interpolation of two-metre temperature over Norway based on the combination of numerical weather prediction ensembles and in situ observations, *Q. J. R. Meteorol. Soc.*, 145, 3626–3643, <https://doi.org/10.1002/qj.3646>, 2019.
- Lussana, C., Tveito, O. E., Dobler, A., and Tunheim, K.: seNorge_2018, daily precipitation, and temperature datasets over Norway, *Earth Syst. Sci. Data*, 11, 1531–1551, <https://doi.org/10.5194/essd-11-1531-2019>, 2019.
- Magnusson, J., Eisner, S., Huang, S., Lussana, C., Mazzotti, G., Essery, R., Saloranta, T., and Beldring, S.: Influence of Spatial Resolution on Snow Cover Dynamics for a Coastal and Mountainous Region at High Latitudes (Norway), *Water Resour. Res.*, 55, 5612–5630, <https://doi.org/10.1029/2019WR024925>, 2019.
- Mahfouf, J.-F., Brasnett, B., and Gagnon, S.: A Canadian precipitation analysis (CaPA) project: description and preliminary results, *Atmos.-Ocean*, 45, 1–17, [TS29](https://doi.org/10.1080/07178740701431111), 2007.
- Müller, M., Homleid, M., Ivarsson, K.-I., Køltzow, M. A., Lindskog, M., Midtbø, K. H., Andrae, U., Aspelien, T., Berggren, L., Bjørge, D., et al. [TS30](https://doi.org/10.1175/JHM-D-14-0191.1): AROME-MetCoOp: a nordic convective-scale operational weather prediction model, *Weather Forecast.*, 32, 609–627, 2017.
- Nipen, T. N., Seierstad, I. A., Lussana, C., Kristiansen, J., and Hov, Ø.: Adopting Citizen Observations in Operational Weather Prediction, *B. Am. Meteorol. Soc.*, 101, E43–E57, <https://doi.org/10.1175/BAMS-D-18-0237.1>, 2020.
- Norwegian Meteorological Institute: MEPS Archive, MET Norway Thredds Service, available at: <https://thredds.met.no/thredds/catalog/meps25epsarchive/catalog.html> [TS31](https://doi.org/10.1175/JHM-D-14-0191.1), 2021a. [TS32](https://doi.org/10.1175/JHM-D-14-0191.1)
- Norwegian Meteorological Institute: Radar accr archive (Norway), MET Norway Thredds Service, available at: <https://thredds.met.no/thredds/catalog/meps25epsarchive/catalog.html> [TS33](https://doi.org/10.1175/JHM-D-14-0191.1), 2021b. [TS34](https://doi.org/10.1175/JHM-D-14-0191.1)
- Pollock, M., Dutton, M., Quinn, P., O’connell, P., Wilkinson, M., and Colli, M.: Accurate rainfall measurement: The Neglected Achilles Heel of hydro-meteorology, in: WMO technical conference on meteorological and environmental instruments and methods of observation, [TS35](https://doi.org/10.1175/JHM-D-14-0191.1) pp. 7–9, 2014.
- Raanes, P. N., Carrassi, A., and Bertino, L.: Extending the Square Root Method to Account for Additive Forecast Noise in Ensemble Methods, *Mon. Weather Rev.*, 143, 3857–3873, <https://doi.org/10.1175/MWR-D-14-00375.1>, 2015.
- Sakov, P. and Bertino, L.: Relation between two common localisation methods for the EnKF, *Comput. Geosci.*, 15, 225–237, 2011.
- Savage, L. J.: The foundations of statistics, Courier Corporation, [TS36](https://doi.org/10.1175/JHM-D-14-0191.1), 1972.
- Soci, C., Bazile, E., Besson, F., and Landelius, T.: High-resolution precipitation re-analysis system for climatological purposes, *Tellus A*, 68, 29879, <https://doi.org/10.3402/tellusa.v68.29879>, 2016.
- Stull, R. B.: An Introduction to Boundary Layer Meteorology, Springer, [TS37](https://doi.org/10.1007/978-94-009-3027-8), <https://doi.org/10.1007/978-94-009-3027-8>, 1988.
- Tarantola, A.: Inverse Problem Theory and methods for model parameter estimation, SIAM, Philadelphia, 2005. [TS38](https://doi.org/10.1175/JHM-D-14-0191.1)
- Thunis, P. and Bornstein, R.: Hierarchy of mesoscale flow assumptions and equations, *J. Atmos. Sci.*, 53, 380–397, 1996.
- Tian, Y., Huffman, G. J., Adler, R. F., Tang, L., Sapiano, M., Maggioni, V., and Wu, H.: Modeling errors in daily precipitation measurements: Additive or multiplicative?, *Geophys. Res. Lett.*, 40, 2060–2065, 2013.
- Uboldi, F., Lussana, C., and Salvati, M.: Three-dimensional spatial interpolation of surface meteorological observations from high-resolution local networks, *Meteorol. Appl.*, 15, 331–345, 2008.
- Vicente-Serrano, S. M., Van der Schrier, G., Begueria, S., Azorin-Molina, C., and Lopez-Moreno, J.-I.: Contribution of precipitation and reference evapotranspiration to drought indices under different climates, *J. Hydrol.*, 526, 42–54, <https://doi.org/10.1016/j.jhydrol.2014.11.025>, 2015.
- Wackernagel, H.: Multivariate Geostatistics, An Introduction with Applications, Springer, [TS39](https://doi.org/10.1007/978-3-662-05294-5) <https://doi.org/10.1007/978-3-662-05294-5>, 2003.
- Wilks, D. S.: Statistical methods in the atmospheric sciences (Fourth Edition), Elsevier, [TS40](https://doi.org/10.1016/B978-0-12-815823-4.00009-2) <https://doi.org/10.1016/B978-0-12-815823-4.00009-2>, 2019.
- Wolff, M. A., Isaksen, K., Petersen-Øverleir, A., Ødemark, K., Reitan, T., and Brækkan, R.: Derivation of a new continuous adjustment function for correcting wind-induced loss of solid precipitation: results of a Norwegian field study, *Hydrol. Earth Syst. Sci.*, 19, 951–967, <https://doi.org/10.5194/hess-19-951-2015>, 2015.
- Zahumensky, I.: World Guidelines on Quality Control Procedures for Data from Automatic Weather Stations, World Meteorological Organization, [TS41](https://doi.org/10.1175/JHM-D-14-0191.1), 2004.

Remarks from the language copy-editor

- CE1** Please note that this manuscript has undergone copy-editing according to the standards of American English.
- CE2** Please check this addition.
- CE3** Please note that I have added the construction “as follows” or “in the following” or variations thereof before each of the equations in this paper (where applicable). This is in alignment with our house standard. However, if you wish to rework the phrase from “as follows” to read “in the following” or something similar in some instances in order to reflect a more accurate meaning of your text, please let me know, and I will gladly accommodate you.
- CE4** What is being obtained? It seems as if there is an object/noun missing from this quotation.
- CE5** Should this be “analysis (expected) value” here and throughout the text? Or do you mean “analysis-expected value”? Apologies for my ignorance; I am completely unfamiliar with this term and therefore not sure of its construction and/or use.
- CE6** Should the five points hereafter be reformatted into an itemized list?

Remarks from the typesetter

- TS1** Please provide department, if possible.
- TS2** The composition of Figs. 8 and 11–15 has been adjusted to our standards. This includes language adjustments to Algorithm 1 and Fig. 8.
- TS3** Please check throughout the text that all vectors are denoted by bold italics and matrices by bold roman.
- TS4** Please check throughout the document. Standard notation for a transposed matrix is with italicised T ; parentheses inserted.
- TS5** Please confirm Eq. 18.
- TS6** Changed to match our standards.
- TS7** Please confirm figure labels.
- TS8** Please confirm standardization.
- TS9** Please provide last access date.
- TS10** Please provide last access date.
- TS11** Please check if all data sets and the respective URLs are included in this section.
- TS12** Please confirm.
- TS13** Please confirm.
- TS14** Please provide a direct link to the data set and, if possible, a DOI instead of a URL. In any case, please provide a reference list entry including creators, title, and date of last access.
- TS15** Please note that there is funding information given in the acknowledgements, but you did not indicate any funding upon manuscript registration. Therefore, we were not able to complete the financial support statement. Please provide the missing information and double-check your acknowledgements to see whether repeated information can be removed from the acknowledgements. Thanks.
- TS16** Please provide last access date.
- TS17** Please provide volume number and page range.
- TS18** Please provide further information (authors, article number).
- TS19** Please provide place of publication.
- TS20** Please provide place of publication.
- TS21** Volume number and pagerange added. Please check.
- TS22** Please provide page range or article number with DOI.
- TS23** Please provide place of publication.
- TS24** Please provide volume number and page range (or article ID and DOI).
- TS25** Please provide place of publication.
- TS26** Please provide place of publication.
- TS27** Volume number and page range added. Please check.
- TS28** Please provide page range.
- TS29** Please check page range.
- TS30** Please provide all author names.
- TS31** Please provide last access date.
- TS32** Please confirm reference list entry for the data set in the data availability section.
- TS33** Please provide last access date.

- TS34** Please confirm reference list entry for the data set in the data availability section.
- TS35** Please provide place of publication and publisher.
- TS36** Please provide place of publication.
- TS37** Please provide place of publication and edition.
- TS38** Please provide more information.
- TS39** Please provide place of publication.
- TS40** Please provide place of publication.
- TS41** Please provide place of publication.