

Figure1. The change of function under different parameters

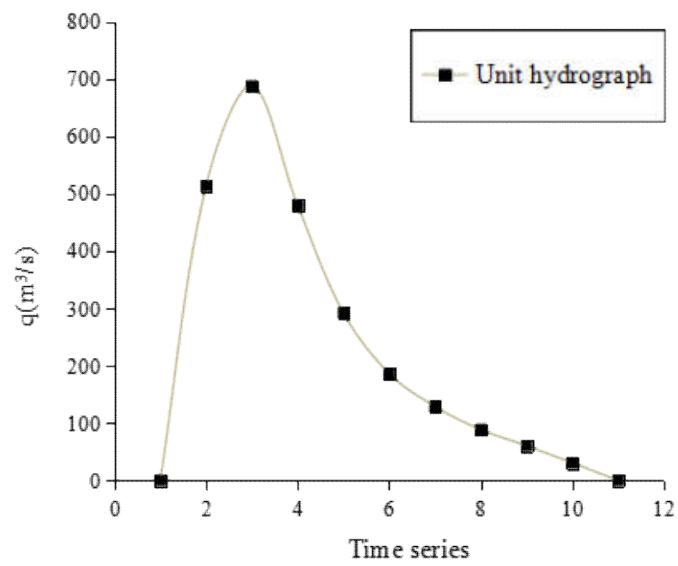


Figure2. Unit hydrograph  $q_i$

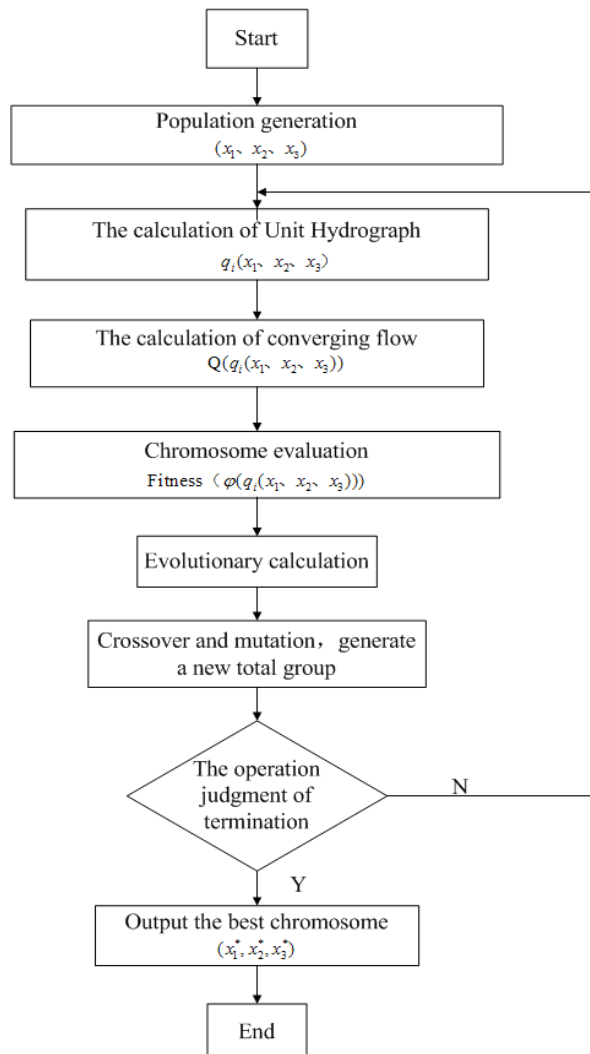


Figure3. The processes map that was used the genetic algorithm to optimize the parameters

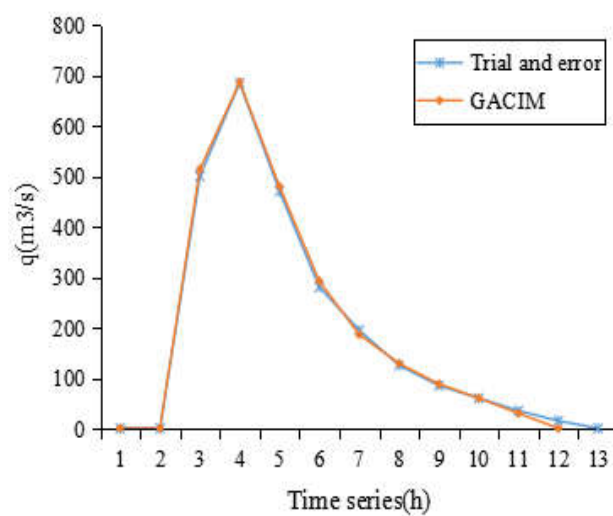


Figure4. Example1: Unit hydrographs ascertained by two methods

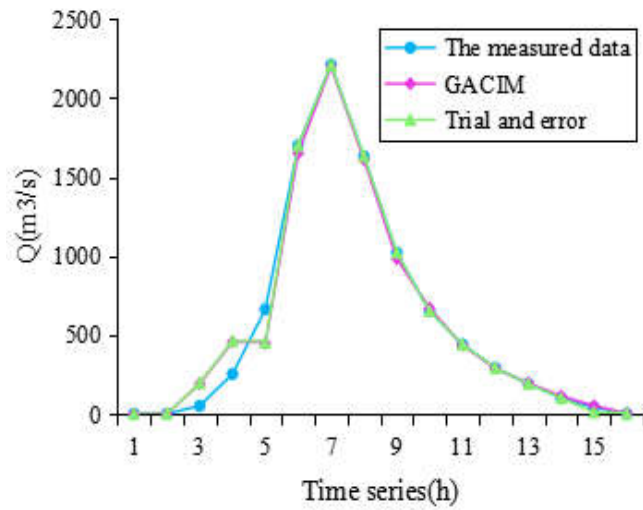


Figure5. Example1: The flow process of outlet section

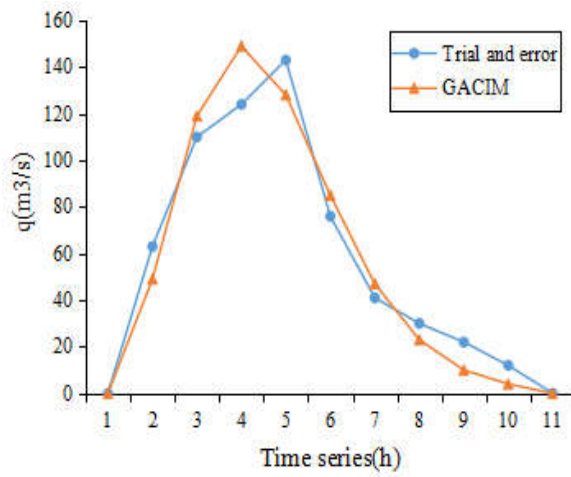


Figure6. Example2: Unit hydrographs ascertained by two methods

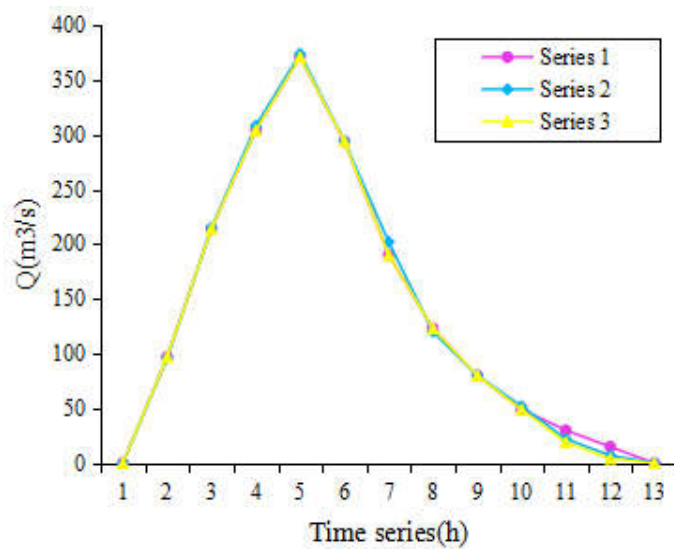


Figure7. Example2: The flow process of outlet section

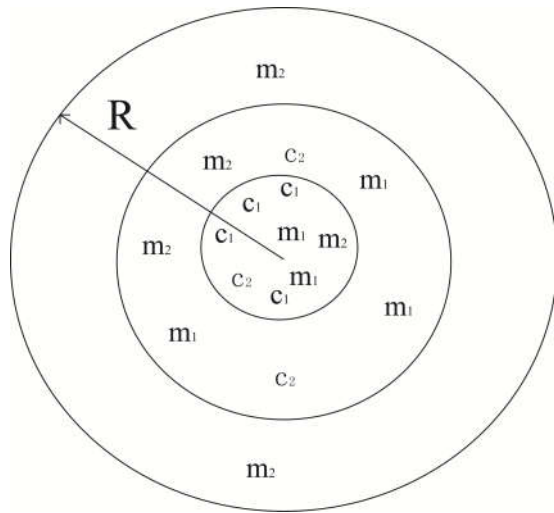


Figure8. The sketch map of the continuation of parameters value space