

Author Comments to Editors Decision

See author comments in green colour

Comments to the Author:

The manuscript has been revised thoroughly according to the reviewers' comments. In the present form, this paper provides a comprehensible overview of post-processing routines run operationally at DWD, which is definitely relevant to the audience of this NPG special issue. Hence, I think the paper will be ready for publication subject to a very minor revision addressing the following issues:

- L50: EMOS does not necessary rely on Gaussian distributions (e.g. EMOS for precipitation based on shifted GEV or shifted Gamma distributions). So I would either call the method NGR (non-homogenous Gaussian regression) here, or rephrase the sentence in order emphasize that depending on the variable of interest EMOS methods relying on different parametric distribution families exist.

Thanks for the clarification. Method called NGR and sentence is rephrased appropriately.

- Equation (1): Why is a subscript k attached to predictand y . This notation is somewhat unusual and needs to be clarified.

The predictand is y .

\hat{y}_k is the estimation using a number of k predictors. The explicit labelling with k is used in the prescription of the stepwise regression in the paragraph after Eq. 7, lines 277ff-

Sentence is rephrased for clarification.

- L193: is this still the case (considering the developments in statistical post-processing over the last decade)?

Actually, I think it is.

Nevertheless, statement changed to „a classical approach“.

- L213: What do you mean by variable here? NWP output?

Yes. „independent variables“ removed since redundant here.

Some typos (list probably not exhaustive):

all corrected, thanks

- L48: forecast errors
- L63/64: use of calibrated ensembles
- L89: thunderstorms?
- L137: Too many observations
- L157: Bougeault et al. (2009); Swinbank et al. (2016)
- L479 : ranked probability score

Attached is an output of latexdiff to track the manuscript changes. Some minor corrections are included in addition. The References of Bougeault and Swinbank are correct in the manuscript, but fail to show up in the difference.

Marked-up difference:

Statistical Postprocessing of Ensemble Forecasts for Severe Weather at Deutscher Wetterdienst

Reinhold Hess

Deutscher Wetterdienst

Correspondence: Reinhold Hess (reinhold.hess@dwd.de)

Abstract. Forecasts of the ensemble systems COSMO-D2-EPS and ECMWF-ENS are statistically optimised and calibrated by Ensemble-MOS with a focus on severe weather in order to support the warning decision management at Deutscher Wetterdienst (DWD). Ensemble mean and spread are used as predictors for linear and logistic multiple regressions to correct for conditional biases. The predictands are derived from synoptic observations and include temperature, precipitation amounts, wind gusts and 5 many more, and are statistically estimated in a comprehensive model output statistics (MOS) approach.

This paper gives an overview of DWD's postprocessing system called Ensemble-MOS together with its motivation and the design consequences for probabilistic forecasts of extreme events based on ensemble data. Long time series and collections of stations are used as training data that capture a sufficient number of observed events, as required for robust statistical modelling.

Logistic regressions are applied to probabilities that predefined meteorological events occur. Details of the implementation 10 including the selection of predictors with testing for significance are presented. For probabilities of severe wind gusts global logistic parameterisations are developed that depend on local estimations of wind speed. In this way, robust probability forecasts for extreme events are obtained while local characteristics are preserved.

Caveats of Ensemble-MOS, such as model changes and requirements for consistency, are addressed that are experienced with DWD's operational MOS systems. Evaluation results are focused on wind gusts.

15 *Copyright statement.* will be included by Copernicus

1 Introduction

Ensemble forecasting rose with the understanding of the limited predictability of weather. This limitation is caused by sparse and imperfect observations, approximating numerical data assimilation and modelling and by the chaotic physical nature of the atmosphere. The basic idea of ensemble forecasting is to vary observations, initial and boundary conditions, and physical 20 parameterisations within their assumed scale of uncertainty, and rerun the forecast model with these changes.

The obtained ensemble of forecasts expresses the distribution of possible weather scenarios to be expected. Probabilistic forecasts can be derived from the ensemble, like forecast errors, probabilities for special weather events, quantiles of the distribution or even estimations of the full distribution. The ensemble spread is often used as estimation for forecast errors.

In a perfect ensemble system the spread is statistically consistent with the forecast error of the ensemble mean against observations

25 (Wilks, 2011, e.g.), however, is experienced often too small, especially for near surface weather elements and short lead times.

Typically, an optimal spread-skill relationship close to 1 and its involved forecast reliability is much easier obtained for atmospheric variables in higher vertical layers, as e.g. 500hPa geopotential height, than for screen level variables like 2m temperature, 10m wind speed or precipitation (Buizza et al., 2005; Gebhardt et al., 2011; Buizza, 2018, e.g.); see also Sec. 4.

In order to make best use of the probabilistic information contained in the ensembles, e.g. by relating probabilities for harmful
30 weather events with ecological value in cost-loss evaluations (Wilks, 2001; Ben Bouallègue et al., 2015, e.g.), the ensemble forecasts should be calibrated to observed relative frequencies as motivated by Buizza (2018). Also warning thresholds, that define the level of probability at which meteorological warnings are to be issued, may be tailored to the public depending on categorical scores such as probability of detection (POD) and false alarm ratio (FAR). Statistical reliability of forecast probabilities is considered essential for qualified threshold definitions and for automated warning guidances.

35 Statistical calibration of ensembles is an application for postprocessing systems additionally to statistical optimisation and interpretation of deterministic forecasts. Calibration should be done with respect to maximise forecast sharpness (Gneiting et al., 2007, e.g.) in order to provide maximal information (the climate mean is calibrated too, however it has no sharpness and is useless as a forecast). Nevertheless, optimisation is still an issue for ensemble forecasts, as in general, the systematic errors of the underlying numerical model are retained in the ensemble mean. Only the random errors are reduced by rerunning the
40 model and by averaging the resulting ensemble forecast.

Due to its utmost importance in probabilistic forecasting an abundance of postprocessing methods for various ensemble systems and also for multimodel ensembles exist. In general, they differ in purpose of application, they are multivariate or specific to a certain forecast element and they use various approaches of statistical modelling. Length of training data generally depends on the statistical method and application, however, the availability of data is also often a serious limitation. Some

45 systems perform individual training for different locations in order to account for local characteristics, whilst others apply the same statistical model to collections of stations or grid points. Global modelling improves statistical sampling to the costs of orographic and climatologic disparities.

Classical MOS systems tend to underestimate ~~forecasts~~ forecast errors if corrections are applied to each ensemble member individually. In order to maintain forecast variability, Vannitsem (2009) suggests considering observation errors. Gneiting et al. 50 (2005) proposes ~~an ensemble postprocessing method named EMOS, which non-homogeneous~~ Gaussian regression (NGR) that relies on Gaussian distributions, ~~whose mean is a weighted average~~. Their means are weighted averages of the ensemble members and the ~~variance is a linear function~~ variances are linear functions of the ensemble spread. Weights and coefficients of the univariate method are trained by minimising the continuous ranked probability score (CRPS). In Bayesian model averaging

(BMA) (Raftery et al., 2005; Möller et al., 2013, e.g.) distributions of already bias corrected forecasts are combined as weighted averages using kernel functions.

Many special systems for individual forecast elements exist, only some are mentioned here. For 24-hourly precipitation Hamill (2012) presents a multimodel ensemble postprocessing based on extended logistic regression and eight years of training data. Hamill et al. (2017) describe a method to blend high-resolution multimodel ensembles by quantile mapping with short training periods of about two months for 6 and 12-hourly precipitations. Systems specialising in wind speed also exist, e.g. Slughter et al. (2013) uses BMA in combination with Gamma distributions. An overview of conventional univariate postprocessing approaches is given in Wilks (2018).

Other approaches create a calibrated ensemble, from which arbitrary calibrated statistical products can be derived in a straightforward way, including area related probabilities. Schefzik et al. (2013); Schefzik and Möller (2018) use ensemble copula coupling (ECC) and Schaake shuffle-based approaches for temperature, precipitation and wind. The use of α -calibrated ensembles provides high flexibility in product generation to the constraint that all ensemble data is accessible.

Fewer methods focus on extreme events of precipitation and wind gusts that are essential for automated warning support. Friederichs et al. (2018) use the tails of generalised extreme-value distributions in order to estimate conditional probabilities of extreme events. As extreme meteorological events are (fortunately) rare, long time series are required to capture a sufficiently large number of occurred events in order to derive statistically significant estimations. For example, strong precipitation events with rain amounts of more than 15mm per hour are captured only about once a year at each rain gauge within Germany. Extreme events with more than 40mm and 50mm rarely appear, nevertheless warnings are essential when they do.

With long time series, a significant portion of the data consists of calm weather without relevance for warnings. It is problematic, however, to restrict or focus training data on severe events. In doing so, predictors might be selected that are highly correlated to the selected series of severe events, but accidentally also to calm scenarios that are not contained in the training data. In order to exclude these spurious predictors and to derive skillful statistical models, more general training data need to be used, since otherwise overforecasting presumably results and frequency bias (FB) and FAR increase. This basically corresponds to the idea of the *forecaster's dilemma*, see Lerch et al. (2017), that states that overforecasting is a promising strategy when forecasts are evaluated mainly for extreme events.

The usage of probabilistic forecasts for warnings of severe weather also impacts influences the way the forecasts need to be evaluated. Also for verification, long time periods are required to capture enough extreme and rare events to derive statistically significant results. Verification scores like root mean square error (RMSE) or CRPS (Hersbach, 2000; Gneiting et al., 2005, e.g.) are highly dominated by the overwhelming majority of cases when no event occurred. Excellent but irrelevant forecasts of calm weather can pretend good verification results, although the few relevant extreme cases might not be forecasted well. Categorical scores like POD and FAR are considered more relevant for rare and extreme cases, along with other more complex

85 scores like Heidke Skill Score (HSS) or equitable threat score (ETS). Also scatter diagrams reveal outliers and are sensitive to extreme values.

Here we present a MOS approach that has been tailored to postprocessing ensemble forecasts for extreme and rare events. It is named Ensemble-MOS and has been set up at DWD in order to support warning management with probabilistic forecasts of potentially harmful weather events within AutoWARN, see Reichert et al. (2015); Reichert (2016, 2017).

Altogether 37

90 different warning elements exist at DWD, including heavy rain and strong wind gusts, both at several levels of intensity, ~~thunderstorm~~thunderstorms, snowfall, fog, limited visibility, frost and others. Currently the ensemble systems COSMO-D2EPS and ECMWF-ENS are optimised and calibrated, but Ensemble-MOS is applicable to other ensembles in general.

At DWD, statistically postprocessed forecasts of the ensemble systems COSMO-D2-EPS and ECMWF-ENS and also of the deterministic models ICON and ECMWF-IFS are combined in a second step in order to provide a consistent data set and a 95 seamless transition from very ~~short-term~~short-term to medium range forecasts. This combined product provides a single voice basis for the generation of warning proposals, see Reichert et al. (2015). The combination is based on a second MOS approach similar to the system described here; it uses the individual statistical forecasts of the numerical models as predictors. As a linear combination of calibrated forecasts not necessarily preserves calibration (Ranjan and Gneiting, 2010, e.g.), additional constant predictors are added to the MOS-equations as a remedy. Primo (2016); Reichert (2017) state that automated warnings of wind

100 gusts based on the combined product achieve a performance that is comparable to that of human forecasters, which is indicated in Fig. 1.

The further outline of the paper is as follows: After the introduction, the used observations and ensemble systems are introduced in Sec. 2. Thereafter, Sec. 3 describes the conceptual design of Ensemble-MOS with the definition of predictands and predictors and provides technical details of the ~~the~~stepwise linear and logistic regressions. Especially for extreme wind gusts,

105 a global logistic regression is presented that use statistical forecasts of the speed of wind gusts as predictors for probabilities of strong events. General caveats of MOS like model changes and forecast consistency are addressed at the end of that section. Results are focused on wind gusts and are provided in Sec. 4. Finally, Sec. 5 provides a summary and conclusions.

2 Observations and ensemble data

Synoptic observations and model data from the ensemble systems COSMO-D2-EPS and ECMWF-ENS are used as training 110 data and for current statistical forecasts. Time series of eight years of observations and model data have been gathered for training at the time of writing. The used data are introduced in the following.

2.1 Synoptic observations

Observations of more than 320 synoptic stations within Germany and its surroundings are used as part of the training data. For short time forecasts the latest available observations at run time are used also as predictors for the statistical modelling, which is described in more detail in Sec. 3.1.

The synoptic observations include measurements of temperature, dew point, precipitation amounts, wind speed and direction, speed of wind gusts, surface pressure, global radiation, visibility, cloud coverage at several height levels, past and present weather and many more. Past and present weather also contain observations of thunderstorm, kind of precipitation and fog amongst others. Ensemble-MOS derives all predictands that are relevant for weather warnings based on synoptic measurements

in a comprehensive approach in order to provide the corresponding statistical forecasts. In this paper, we focus on the speeds of wind gusts and on probabilities for severe storms.

2.2 COSMO-D2-EPS and upscaled precipitation probabilities

The ensemble system COSMO-D2-EPS of DWD consists of 20 members of the numerical model COSMO-D2. It provides ~~short-term~~ short-term weather forecasts for Germany with runs every three hours (i.e. 00UTC, ..., 21UTC) with forecast steps of 1h up to 27h ahead (up to 45h for 03UTC). COSMO-D2 was upgraded from its predecessor model COSMO-DE on 15 May 2018, together with its ensemble system COSMO-D2-EPS; the upgrade included an increase in horizontal resolution from 2.8km to 2.2km and an adapted orography. Detailed descriptions of COSMO-DE and its ensemble system COSMO-DE-EPS are provided in Baldauf et al. (2011) and Gebhardt et al. (2011); Peralta et al. (2012), respectively. For the ensemble system initial and boundary conditions as well as physical parameterisations are varied according to their assumed levels of 130 uncertainty.

For the postprocessing of COSMO-D2-EPS, eight years of data have been gathered including data from the predecessor system COSMO-DE-EPS, which has been available since 8 December 2010. Thus, a number of model changes and updates are included in the data; impacts on statistical forecasting are addressed later in Sec. 3.4. Each run of Ensemble-MOS starts two hours after the corresponding run of COSMO-D2-EPS to assure that the ensemble system has finished and the data are available.

Forecast probabilities of meteorological events can be estimated as the relative frequency of the ensemble members that show the event of interest. If the relative frequencies are evaluated grid point by grid point, the probability estimations correspond to areas of the resolution of the COSMO-D2 of $2.2 \times 2.2 \text{ km}^2$. For near surface elements and short lead times the COSMO-D2-

EPS is often underdispersive and underestimates forecast errors. Figure 2 shows a rank histogram for 1-hourly precipitation amounts of COSMO-DE-EPS. Too many ~~observation~~ observations have either less or more precipitation than all members of the ensemble. Using these relative frequencies as estimations of event probabilities statistically results in too many probabilities with values 0 and 1.

Because of the high spatial variability of precipitation, also upscaled precipitation products are derived from COSMO-D2-EPS, which are relative frequencies of precipitation events within areas of 10×10 grid points (i.e. 22×22km²). A meteorological event (e.g. that the precipitation rate exceeds a certain threshold) is considered to occur within an area, if the event occurs at any one of its grid points. Area probabilities are therefore estimated straightforward as the relative number of ensemble members with the area event, whereby it is not required that the event takes place at exactly the same grid point for all ensemble members.

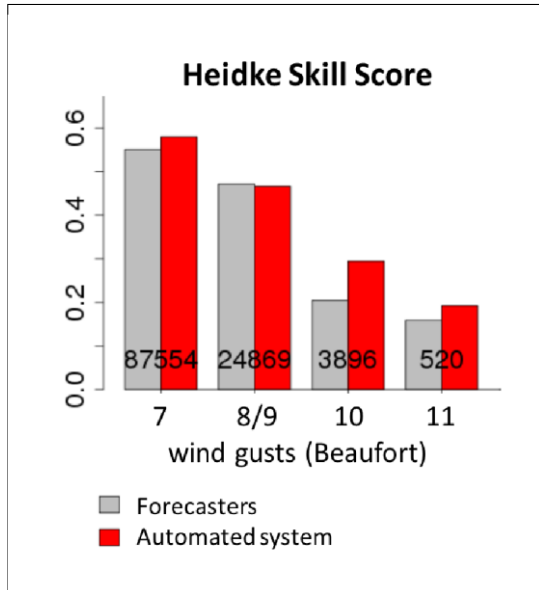
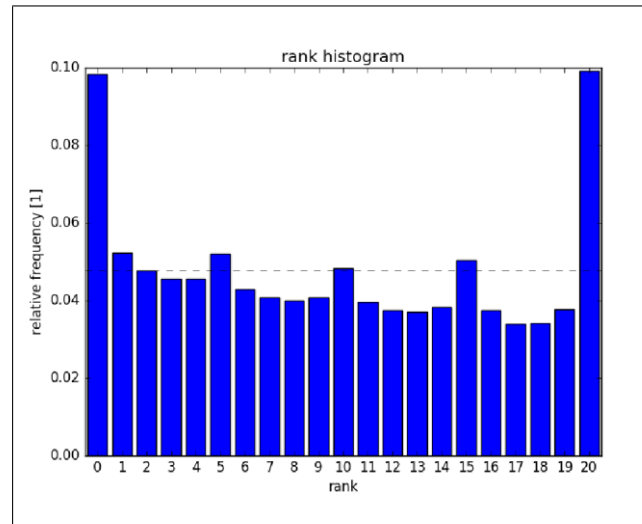


Figure 1. HSS of automated warn proposals (red) and warnings issued by the Forecaster (grey) for hourly verifications with similar lead times, see Reichert (2017). Verification is based on 220 stations in



Germany with time period from October 2016 to March 2017.

Figure 2. Rank/Talagrand histogram for 1-hourly precipitation amounts of COSMO-DE-EPS, forecast lead time 3h, data for : 18 stations from 2011 to 2017

Certainly, also these raw ensemble based estimates are affected by systematic errors of the numerical model COSMO-D2. Hess et al. (2018) observed a bias of -6.2 percentage points for the upscaled precipitation product of COSMO-DE-EPS for the probability that hourly precipitation rate exceeds 0.1mm. Verification has been done against gauge adjusted radar observations, which is a suitable observation system for areas.

2.3 ECMWF-ENS and TIGGE-data

The ECMWF-ENS is a global ensemble system based on the Integrated Forecasting System (IFS) of the European Centre for Medium-Range Weather Forecasting (ECMWF). It consists of 50 perturbed members plus one control run and is computed twice a day for 00UTC and 12UTC up to 15 days ahead (and even further with reduced resolution). Postprocessing of Ensemble-MOS at DWD is based on the 00UTC-run with forecast lead times up to 10 days in steps of three hours. Forecasts

of ECMWF-ENS are interpolated from their genuine spectral resolution to a regular grid with 28km (0.25°) mesh size. Data have been gathered according to the availability of COSMO-DE/2-EPS since 8 December 2010.

160 TIGGE-data from 2002 to 2013, see [Swinbank, R. et al. \(2016\)](#); [Bougeault et al. \(2010\)](#); [Swinbank et al. \(2016\)](#) of ECMWF-

ENS were used in a study to demonstrate the benefits of Ensemble-MOS prior to unarchiving and downloading the gridded ensemble data mentioned above. This study was restricted to the available set of model variables of TIGGE (2m temperature, mean wind, cloud coverage and 24h precipitation); results are given in Sec. 4.2.

3 Postprocessing by Ensemble-MOS

165 The Ensemble-MOS of DWD is a model output statistics (MOS) system specialised to postprocess the probabilistic information of NWP-ensembles. Besides calibrating probabilistic forecasts, Ensemble-MOS simultaneously optimises also continuous variables, as e.g. precipitation amounts and the speeds of wind gusts. Moreover, also statistical interpretations exist for meteorological elements that are not available from numerical forecasts (e.g. thunderstorm, fog or range of visibility). In principle, all meteorological parameters and events that are regularly observed can be forecasted statistically. This includes temperature,

170 dew point, wind speed and direction, wind gusts, surface pressure, global radiation, visibility, cloud coverage at several height levels as well as the synoptic weather with events of thunderstorm, special kinds of precipitation, fog and more.

The basic concept of Ensemble-MOS is to use ensemble mean, spread, and other ensemble products as predictors in multiple linear and logistic regressions. The use of ensemble products as predictors instead of processing each ensemble member individually prevents difficulties with underdispersive statistical results and underestimated errors especially on longer forecast

175 times. Since MOS systems usually tend to converge towards climatology due to the fading accuracy of numerical models and the limited predictability of meteorological events (Vannitsem, 2009, e.g.), individually processed members converge accordingly. Moreover, if the same postprocessing is applied to the ensemble members, the conditional corrections ~~are based on basically~~ ~~base on~~ ~~essentially~~ the same conditions, since the same selection of predictors is used.

Ensemble-MOS is based on a MOS system originally set up for postprocessing deterministic forecasts of the former global 180 numerical model GME of DWD and of the deterministic, high resolution IFS of ECMWF, see Knüpfper (1996). Using the ensemble mean and spread as model predictors allows ~~to apply~~ ~~applying~~ the original MOS-approach for deterministic NWPmodels to ensembles in a straightforward way.

For continuous variables, such as temperature, precipitation amount, wind speed and for estimations of their errors, multiple linear regressions are applied. The MOS-equation ~~for~~ ~~of~~ a statistical estimation \hat{y}_k ~~of a continuous predictand y is~~

$$185 \hat{y}_k = c_0 + c_1 x_1 + \dots + c_k x_k$$

with k predictors x_1, \dots, x_k and $k+1$ coefficients c_0, \dots, c_k of a continuous predictand y .

$$\hat{y}_k = c_0 + c_1 x_1 + \dots + c_k x_k. \quad (1)$$

Multiple logistic regressions are used for probabilities such that meteorological events like thunderstorms occur or that continuous variables like precipitation amount or wind speed exceed predefined thresholds. For logistic regression an estimation

190

$$\hat{y}_k = \frac{1}{1 + e^{-(c_0 + c_1 x_1 + \dots + c_k x_k)}} \quad (2)$$

of the predictand y is determined using a maximum likelihood approach. The predictand y now is a binary variable that is 1 in case the event was observed and 0 if not, whereas the estimation \hat{y}_k is considered a probability that takes values from 0 to 1.

Logistic regression (Hosmer et al., 2013, e.g.) is regarded as state-of-the-art for operational a classical approach for probabilistic 195 postprocessing.

Details of the implementation of linear and logistic regression are presented in Sec. 3.1 and 3.2, respectively. Especially for probabilities of strong and extreme wind gusts a global regression is applied that is presented in Sec. 3.3. For an introduction to MOS in general we refer to Glahn and Lowry (1972); Wilks (2011); Vannitsem et al. (2018).

3.1 Optimisation and interpretation by linear regression

200 Ensemble-MOS derives altogether some 150 predictands from synoptic observations (for precipitation also gauge adjusted radar products can be used) for statistical modelling. For the speeds of wind gusts and for precipitation amounts individual predictands for various reference periods (e.g. 1-hourly, 3-hourly, 6-hourly and longer) are defined. These predictands are used in subsequent logistic regressions as predictors for probabilistic forecasts with these time references.

In order to estimate the error of the current forecast, an error predictand

$$205 y^e = |\hat{y}_k - y| \quad (3)$$

is defined as the absolute value of the residuum. The corresponding estimation \hat{y}_k^e is defined according to Eq. 4:(1). This error predictand can be evaluated as soon as the corresponding estimation \hat{y}_k is available. The absolute value is preferred over the root mean square (RMS) of the residuum, since it shows higher correlations to many predictors and a better linear fitting. For

Gaussian distributions with density ϕ_{μ,σ^2} the absolute error e (or mean absolute deviation) of the distribution can be estimated
 210 from the standard deviation σ as

$$e = \int_{-\infty}^{\infty} |x - \mu| \varphi_{\mu,\sigma^2}(x) dx = 2 \int_0^{\infty} x \frac{1}{\sqrt{2\pi}\sigma} e^{-\frac{x^2}{2\sigma^2}} dx = \sqrt{\frac{2}{\pi}} \sigma \approx 0.8\sigma \quad (4)$$

For each predictand the most relevant predictors are selected from a predefined set of independent variables by stepwise regression. Statistical modelling is performed for each predictand, station, season, forecast run and forecast time individually in general. For rare events, however, nine zones with similar climatology are defined (e.g. coastal strip, north German plain, 215 various height zones in southern Germany, high mountain areas, etc.) and the stations are clustered together in order to increase the number of observed events and the statistical significance of the training data. All stations of a cluster are modelled together for those events.

Most ~~independent variables and~~ potential predictors are based on forecasts of the ensemble system, which are interpolated to the locations of the observation sites. Additional to the model values at the nearest grid point, also mean and standard
 220 deviation of the 6×6 and 11×11 surrounding grid points are evaluated and provided as medium and ~~large-scale~~.....large-scale predictors, respectively. Moreover, also extra variables are derived from the NWP-model fields to be used as predictors, as e.g. potential temperature, various atmospheric layer thicknesses, rotation and divergence of wind velocity, dew-point spread and even special parameters, such as convective available potential energy (CAPE) and severe weather threat index (SWEAT). These variables are computed from the ensemble means of the required fields.

225 ~~Also statistical~~.....Statistical.....forecasts of the same variable of the last forecast step and also of other variables of the current forecast step can be used as.....well. For example, forecasts of 2m temperature may use statistical forecasts of precipitation amounts of the same time step as predictors. The order of the statistical modelling and of the forecasting is relevant in such cases to make sure the required data is available.

Further predictors are derived from the latest observations that are available at the time when the statistical forecast is
 230 computed. Generally, the latest observation is an excellent projection for ~~short term~~.....short-term.....forecasts up to about four to six hours, which is therefore added to the set of available predictors. Special care has to be taken to process these predictors for training, however. Only those observations can be used that are available at run time of the forecast. In case forecasts are computed for arbitrary locations apart from observation and training sites, these observations or persistency predictors have to be processed in exactly the same way in training and forecasting. At locations other than observation sites, the required values

235 need to be interpolated from the surrounding stations. As interpolation generally is a weighted average based on horizontal and vertical distance, it introduces smoothing and, with it, a systematic statistical change in the use of the observations. If the

training is performed using observations at the stations and the forecasting is using interpolation, the statistical forecasts can be affected. As a remedy, Ensemble-MOS uses observations as persistence predictors for training that are interpolated from up to five surrounding stations in exactly the same way as when computing the forecast at arbitrary locations, even if an observation 240 at the correct location was available.

Also special orographic predictors exist, like height of station or height difference between station and model at this location.

In order to address model changes also indicators or binary variables are **defined**.....**provided** (see Sec. 3.4 for details). Altogether more than 300 independent variables are defined, from which up to ten predictors are selected for each predictand during multiple regression.

245 During stepwise regression, the predictor with the highest correlation with the predictand is selected first from the set of available independent variables. Next, the linear regression with the previously chosen set of predictors is computed and the next predictor with the highest correlation with the residuum is selected, and so on. Selection stops, if no further predictor exists with a statistically significant correlation according to a Student’s t-test. The level of significance of the test is 0.18 divided by the number of available independent variables. This division is used because of the high number of potential predictors. With a

250 type I error of e.g. 0.05 and a number of 300 available predictors, 15 predictors in average would be selected randomly without providing significant information. The value 0.18 is found to be a good compromise in order to select a meaningful number of predictors and to prevent overfitting in this scenario.

Table 1 lists the most important predictors for statistical forecasts of the maximal speed of wind gusts within 1h. The relative weights are aggregated over 5472 equations, one for each cluster, season, forecast run, and forecast lead time. Note, 255 that predictors that are highly correlated usually exclude each other to appear within one equation. Only the predictor with the highest correlation with the predictand is selected and supplants other correlated predictors that do not provide enough additional information according to the t-test.

Table 1. Predictors for statistical forecasts of the maximal speed of wind gusts within 1h that have relative weights higher than 1%. The relative weights are aggregated for all stations, seasons, forecast runs, and forecast lead times. The ensemble mean of COSMO-D2-EPS is denoted by DMO (direct model output). Parentheses within the predictor names denote time shifts. For a time shift of -30min, denoted as (-0:30), the predictors are interpolated based on values for the previous and the current forecast hour. The required statistical forecasts have to be evaluated in advance.

predictor name	rel. weight [%]	description
FF(-0:30)StF	35.7	statistical forecast of mean wind speed in 10m height
FX1(-1)StF	12.1	statistical forecast of speed of wind gusts of the previous hour
VMAX_10M_LS	8.9	DMO of speed of wind gusts for a large surrounding area (mean of 11×11 grid points)
VMAX_10M	8.6	DMO of speed of wind gusts for next model grid point

FF_850(-0:30)	4.8	DMO of wind speed in 800hPa height
VMAX_10M_MS	4.1	DMO of speed of wind gusts for a medium surrounding area (mean of 6×6 grid points)
Oa_D_0.5	3.2	latest observation of the speed of wind gusts
FF_10m(-0:30)	2.8	DMO of mean wind speed in 10m height
StFT2m_T950	1.9	statistical forecast of temperature difference between 2m and 950hPa height (stability index)
Location-height	1.6	height of station
FF_1000(-0:30)	1.1	DMO of wind speed in 1000hPa height

The MOS-equations are determined by stepwise regression for individual locations and, in case of rare events, for clusters. In order to compute statistical forecasts on a regular grid, these equations need to be evaluated for locations apart from the 260 training and observation sites. In case of rare events and cluster equations the appropriate cluster is determined for each grid points and the equation of that cluster is used. The equations for individual locations are interpolated to the required grid point by linear interpolation of their coefficients. In all cases, the required values of the numerical model for these equations are evaluated for the exact location. Observations that are used as persistency predictors are interpolated from surrounding sites. In this way gridded forecast maps can be obtained as displayed in Fig. 3 for wind gust probabilities (see Sec. 3.2 for 265 probabilistic forecasts). For computational efficiency the forecasts are initially computed on a regular grid of 20km resolution and are downscaled thereafter to 1km while taking into account the various height zones in southern Germany. The details of the downscaling are beyond the scope of the paper.

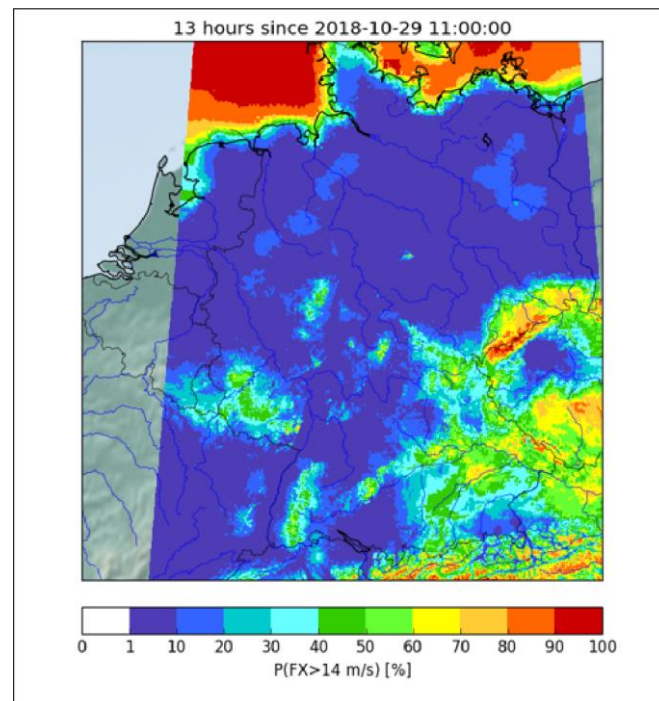


Figure 3. Probabilities for wind gusts higher than 14ms^{-1} on a regular 1km grid over Germany, 13h forecast lead time from EnsembleMOS for COSMO-DE-EPS from 29 October 2018

3.2 Calibration of probabilistic forecasts by logistic regression

Event probabilities are calibrated using logistic regression. Equation 2.2 is solved using a maximum likelihood approach.

270 The likelihood function

$$P(y, c_0, \dots, c_k) = \prod_{i=1}^n (\hat{y}_k^i)^{y^i} (1 - \hat{y}_k^i)^{1-y^i} \quad (5)$$

expresses the probability that the predictand y is realised given the estimation \hat{y}_k via the coefficients c_0, \dots, c_k (and by now with fixed predictors x_1, \dots, x_k), with n being the time dimension (sample size) and i the time index. The predictand y of an event probability is binomially distributed, its time-series values are defined as 1 in case the event was observed and 0 if not, 275 whereby conditional independence is assumed in Eq. 5(5):

It is mathematically equivalent and computationally more efficient to maximise the logarithm of the likelihood function

$$\ln(P(y, c_0, \dots, c_k)) = \sum_{i=1}^n (y^i \ln(\hat{y}_k^i) + (1 - y^i) \ln(1 - \hat{y}_k^i)) \quad (6)$$

This maximisation is implemented by calling the Routine G02GBF of the NAG-Library in FORTRAN 90, see Numerical Algorithms Group (1990). The resulting fit of the estimation \hat{y}_k can be evaluated by the deviance

$$280 D_k = -2 \ln(P(y, c_0, \dots, c_k)), \quad (7)$$

which is a measure analogous to the squared sum of residua in linear regression.

The selection of predictors is again performed stepwise. Initially, the coefficient c_0 of the null model $\bar{y} = \frac{1}{1 + e^{-c_0}}$ that fits the mean of the predictand is determined and the null deviance $D_0 = -2 \ln(P(y, c_0))$ is computed. The coefficient c_0 is often called the intercept. Starting from the null model the predictor that is selected first is that one that shows the smallest
285 deviance $D_1 = -2 \ln(P(y, c_0, c_1))$. The difference $D_1 - D_0$ is χ_1^2 -distributed with 1 degree of freedom and is used to check the statistical significance of the predictor. This check replaces the t-test in linear regression and uses the same statistical level. If the predictor shows a significant contribution, it is accepted and further predictors are tested based on the new model in the same way. Otherwise, the predictor is rejected and the previous fitting \hat{y}_{k-1} is accepted as the final statistical model.

As a rule of thumb, for each selected predictor in the statistical model at least ten events need to be captured within the
290 observation data (*one in ten rule*) to find stable coefficients. For example, with only 30 events in the training set, the number of predictors should be restricted to three. This rule is critical especially for rare events such as extreme wind gusts or heavy precipitation.

Since testing all candidate predictors from the set of about 300 variables by computing their deviances is very costly, however, the score test (Lagrange multiplier test) is actually applied to Ensemble-MOS. Given a fitted logistic regression with 295 $k-1$ selected predictors, the predictor is chosen next as x_k , that shows the steepest gradient of the log-likelihood function Eq. (6) in an absolute sense when introduced, normalised by its standard deviation σ_{x_k} , i.e.

$$\frac{1}{\sigma_{x_k}} \left| \frac{\partial \ln(P(y, c_0, \dots, c_k))}{\partial c_k} \right|_{c_k=0} = \left| \sum_{i=1}^n (y^i - \hat{y}_{k-1}^i) \frac{x_k^i}{\sigma_{x_k}} \right| \quad (8)$$

This [equations.....equation](#) results from basic calculus including the identity $\frac{\partial \hat{y}_k}{\partial c_k} = \hat{y}_k(1-\hat{y}_k) x_k$. The right hand side of Eq. (8) is basically the correlation of the current residuum to the new predictor. The score test thus results in the same selection criterion

300 as applied to stepwise linear regression. Once the predictor x_k is selected, the coefficients c_0, \dots, c_k are updated to maximise Eq. (6).

3.3 Global logistic regression of wind gust probabilities

For extreme events, the number of observed occurrences can still be too small to derive stable MOS-equations, although time series of several years have been gathered and the stations are clustered within climatologic zones in Germany. The eight

305 warning thresholds of DWD for wind gusts range from 12.9ms^{-1} (25.0kn, proper wind gusts) up to 38.6ms^{-1} (75.0kn, extreme gales), whereas the maximal observed speed of wind gusts in the training data for a cluster in the northern German plains is only 25.4ms^{-1} . Especially for probabilities of extreme wind gusts global logistic regressions are developed, that use events at the coastal strip or at mountains in southern Germany and allow for meaningful statistical forecasts of extreme events also in climatologically calm areas. The statistical forecasts of the continuous speed of wind gusts are used for these logistic 310 regressions as the only predictors. They are modelled by stepwise linear regression for each station individually, as described in Sec. 3.1. In this way, rare occurrences of extreme events are gathered globally, while concurrently a certain degree of locality is maintained.

The locally optimised and unbiased forecasts of wind gust speeds are excellent predictors for wind gust probabilities. The logistic regressions according to Eq. [2....\(2\)](#) with $k = 1$ fit the distributions of observed wind gusts as shown in Fig. 4 for threshold 315 $t = 13.9\text{ms}^{-1}$ (27.0kn) and forecast lead times of 1h and 7h, respectively.

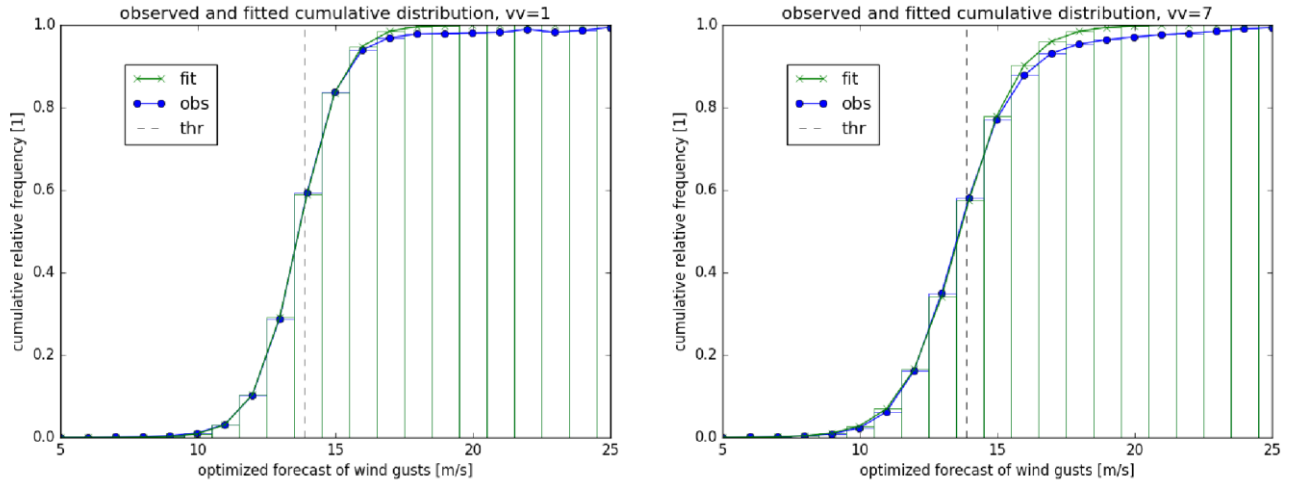


Figure 4. Observed cumulative distributions of wind gusts exceeding threshold 13.9ms^{-1} (blue) and fit of logistic distribution (green) depending on statistically optimised forecasts of wind gusts for forecast lead times 1h (left) and 7h (right). The threshold is dashed.

The statistical modelling of wind gust probabilities is performed for each threshold t individually and is described in the following. The logistic regressions represent logistic distributions with mean $\mu_t = -\frac{c_0}{c_1}$ and variance $\sigma_t^2 = \frac{\pi^2}{3c_1^2}$, which are computed for various lead times h and are listed in Tab. 2. The expectations μ_t are slightly smaller than the threshold $t = 13.9\text{ms}^{-1}$, almost independently of lead time. The reason is that for given statistical forecasts of wind gusts the distribution of observations is almost Gaussian, see Fig. 5, albeit a little left skewed with a small number of very slow wind observations. The standard deviations σ_t increases with forecast lead time reflecting the loss of accuracy of the statistical forecasts. As a consequence, the graph of the cumulative distribution function in Fig. 4 is more tilted for a forecast lead time of 7h than for 1h.

Figure 6 shows fitted variances σ_t^2 of the eight individual forecast runs of Ensemble-MOS for COSMO-DE-EPS and their 325 mean depending on lead time. In order to reduce the number of coefficients and to increase consistency and robustness of the

Table 2. Parameters of fitted logistic distributions as shown in Fig. 4 for various forecast lead times h , with coefficients of logistic regressions c_0 and c_1 and resulting means μ_t and standard deviations σ_t for threshold $t = 13.9\text{ms}^{-1}$

h	c_1	c_0	μ_t	σ_t
1	-17.7	1.30	13.7	1.40
4	-13.8	1.01	13.7	1.72
7	-13.3	0.98	13.7	1.86
10	-13.0	0.95	13.7	1.91
16	-12.5	0.92	13.6	1.97

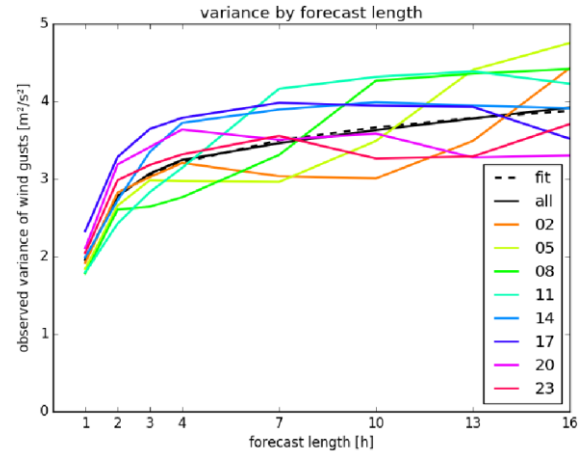
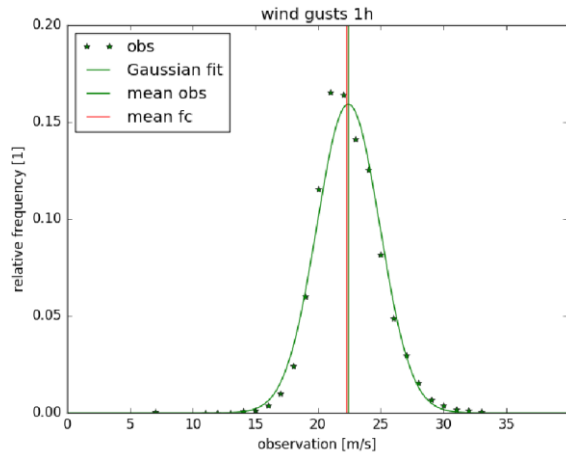


Figure 5. Distribution of wind gust observations from 2011 to 2016 for 178 synoptic stations for cases where statistical forecast

Figure 6. Variances σ_t^2 of logistic distributions fitted to cumulative distributions of observed wind gusts for threshold $t =$

(fitted for that period) is between 21ms⁻¹ and 25ms⁻¹. Lead

13.9ms depending on forecast lead time. Individual runs of

time is 1h. Gaussian fit and mean of observations (green), mean of forecasts (red)

Ensemble-MOS for COSMO-DE-EPS-MOS starting at 02UTC, 05UTC, ..., 23UTC in colours, mean of all runs in black, fitted

parameterisation of variances dashed in black

forecasts, the variance σ_t^2 is parameterised depending on forecast lead time h by fitting the function

$$\sigma_t^2(h) = c_t \log(a_t h + b_t) \quad (9)$$

with its parameters a_t , b_t , and c_t for threshold t .

The fitted expectations and variances show weak dependencies on the time of the day and are neglected. The logistic regressions of wind gust probabilities thus can be expressed for each threshold t by the mean μ_t and σ_t for all start times of the forecasts in the same way.

Even for very rare gales of 38.6ms⁻¹ more than 130 events are captured using six years of training data when modelling all stations and forecast runs together, which is sufficient for logistic regression. Training for these extreme events is based mainly on coastal and mountain stations, but the statistical regressions are applied to less exposed locations in calmer regions as well. Small threshold probabilities will be predicted for those locations in general. However, meaningful estimations will be generated once the statistical forecasts of local wind speed rises when induced by the numerical model.

3.4 Specific issues and caveats of MOS

Ensemble-MOS optimises and calibrates ensemble forecasts with the use of synoptic observations. As with any other statistical method, it is vulnerable to systematic changes in input data, since it assumes that errors and characteristics of the past persist in

340 future. An important part of the input are observations, whose measurement instruments sometimes change. It is recommended to use ~~quality-checked~~.....~~quality-checked~~ observations in order to avoid the use of defective values for training. Especially observation sites that are ~~automised~~-~~automatised~~..... need to be screened. Furthermore, numerical models change with new versions and updates that can affect statistical postprocessing, as further discussed in Sec. 3.4.1.

Although statistical forecasts generally improve the model output when verified against observations, the results are not
345 always consistent in time, space and between the forecast variables (e.g. between temperature and dew point), if they are optimised individually. This issue is addressed in Sec. 3.4.2.

3.4.1 Model changes

Statistical methods like Ensemble-MOS detect systematic errors and deficiencies of NWP-models during a past training period in order to improve topical operational forecasts. Implicitly it is assumed, that the systematic characteristics of the NWP-
350 models persist. Note ~~r~~ that multiple regressions not only correct for model bias, but also for conditional biases that depend on other meteorological variables. Multiple regressions are more vulnerable to model changes than simple regressions, therefore. Systematic changes in NWP-models can affect statistical forecasts, even if the NWP-forecasts are objectively improved as confirmed by verification. Given that the statistical modelling provides unbiased estimations, any systematic change in NWPmodel predictors will reflect in biases in the statistical forecasts. The resulting biases depend on the magnitudes of the changes 355 of the predictors and on their weights in the MOS-equations.

One remedy for jumps in input data is the use of indicator (binary) predictors. These predictors are related to the date of the change of the NWP-model and are defined as 1 before and 0 after. When they are selected during stepwise regression, they account for sudden jumps in the training data and can prevent the introduction of unconditional biases in the statistical forecasts. Conditional biases depending on other forecast variables, however, are not corrected.

360 In order to process extreme and very rare events for weather warnings, long time series of seven years of data for COSMOD2-EPS have been gathered at the time of writing, while a number of model changes have taken place. A significant model upgrade from COSMO-DE to COSMO-D2, including an increase of horizontal resolution from 2.8km to 2.2km and an update of orography, took place in May 2018. Since reforecasting of COSMO-D2-EPS for more than one year was technically not possible, the existing COSMO-DE-EPS database was used further and extended with reforecasts of COSMO-D2-EPS of the
365 year before operational introduction. However, statistical experiments using these reforecasts of COSMO-D2-EPS (and the use of binary predictors, see above) revealed only small improvements compared to training with data of COSMO-DE-EPS only. For rare events, longer time series are considered more important than the use of unaltered model versions.

3.4.2 Forecast consistency

As weather warnings are issued for a certain period of time and a specified region, continuity of probabilistic forecasts in time and space is important. It should be accepted, however, that maps of statistical forecasts do not comply with deterministic runs of numerical models, as probabilistic forecasts are smoothed according to forecast uncertainty. For example, there are hardly convective cells in probabilistic forecasts, but rather areas exist where convection might occur with a certain probability within a given time period.

The statistical modelling of Ensemble-MOS is carried out for each forecast variable, forecast lead time and location independently and individual MOS-equations are derived. For rare meteorological events clusters of stations are grouped together that are similar in climatology in order to derive individual cluster equations. This local and individual fitting results in optimal forecasts for the specific time, location and variable as measured with the RMSE compared to observations. However, it does not guarantee that forecast fields are consistent in space, time or between variables.

In forecast time, spurious jumps can appear and variables with different reference periods usually do not match. For example, the sum of twelve successive one-hourly precipitation amounts would not equal the corresponding 12-hourly amount, if the latter is modelled as an individual predictand. Forecasts of temperature cannot be guaranteed to exceed those of dew point. Forecast maps show high variability from station to station and unwanted anomalies in case of cluster equations. Cluster edges turn up and it may appear that there are higher wind gusts in a valley than on a mountain nearby, in cases where the locations are arranged in different clusters, for example. For consistency in time and space the situation can be improved by using the

same equations for several lead times and for larger clusters or by elaborate subsequent smoothing. However, forecast quality for a given space and time will be degraded ~~as a consequence~~ consequently. For consistency between all forecast variables multivariate regressions are required that model the relevant predictands simultaneously.

From the point of view of probabilistic forecasting, however, statistical forecasts are random variables with statistical distributions, although commonly only their expectations are considered as *the* statistical forecast. In case forecast consistency is violated from a deterministic point of view, this is not the case if statistical errors are taken into account. The statistical forecasts remain valid as long as the probability distributions of the variables overlap. As this is a mathematical point of view, the question remains, how to communicate this nature of probabilistic forecasts to the public or traditional meteorologists in terms of useful and accepted products.

4 Results

Evaluation of Ensemble-MOS for COSMO-DE-EPS and ECMWF-ENS is provided in the following. Although EnsembleMOS of DWD provides statistical forecasts of many forecast variables that are relevant for warnings, evaluation is focused on wind gusts for COSMO-DE-EPS and on temperature for ECMWF-ENS in order to limit the scope of the paper.

4.1 Evaluation of Ensemble-MOS for COSMO-DE-EPS

Verifications of the continuous speed of wind gusts are presented in Fig. 7 by various scatter diagrams including forecast 400 means (solid line) and their standard errors (dashed lines). Figures 7a (right) and 7b (right) show the statistical fit of the speed of wind gusts against synoptic observations during a training period of six years of Ensemble-MOS for COSMO-DE-EPS for lead times of 1h and 6h, respectively. The fit is almost unbiased for all forecast speed levels. The raw ensemble means show overforecasting for high wind gusts (same Figs., left) and the standard errors are considerably larger. If no overfitting occurs, free forecasts are expected to behave accordingly, which is verified in Fig. 7c (right) for a test period of three months (at least 405 for wind gusts up to about 20ms^{-1}).

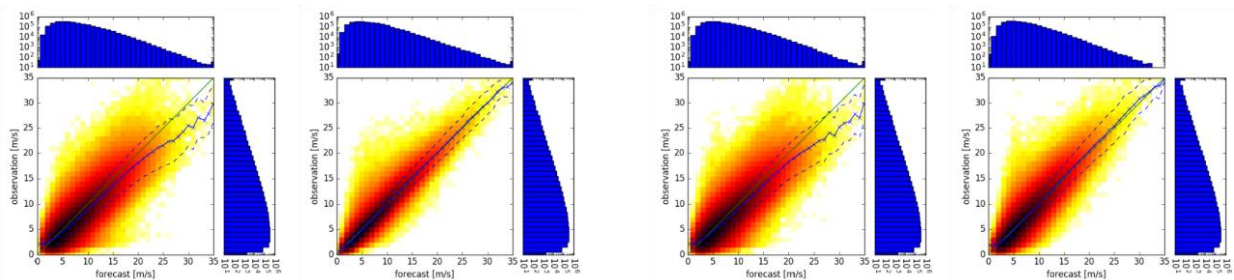
Ensemble-MOS can predict its own current forecast errors by using error predictands according to Eq. 3.3. Forecasts of the absolute errors of the speeds of wind gusts are related to observed errors in Fig. 7d (right). The biases are small, although individual observed errors are much larger than their predictions. The absolute errors of the ensemble mean versus ensemble spread (normalised to absolute error) strongly underestimate the observed errors of the ensemble mean, see Fig. 7d (left). This is another example for underestimated dispersion of COSMO-DE-EPS as shown in Fig. 2 for precipitation.

The statistical forecasts of the speeds of the wind gusts are excellent predictors for the probabilities that certain warning thresholds are exceeded. This is demonstrated by the fits of the observed distributions by logistic regression as shown in Fig. 4.

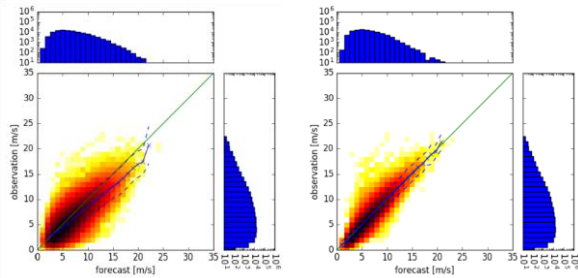
The global logistic regression presented in Sec. 3.3 is prepared for extreme and rare events, nevertheless it is applicable to lower thresholds as well. The reliability diagram Fig. 8 shows well-calibrated probabilities for wind gusts exceeding 7.7ms^{-1} for a zone in the northern German plains with calmer winds in climatology. The COSMO-DE-EPS shows strong overforecasting in these situations.

4.2 Evaluation of Ensemble-MOS for ECMWF-ENS

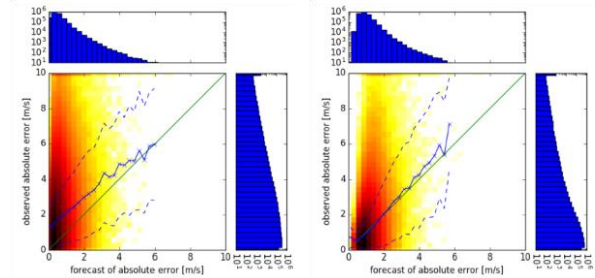
In order to motivate the use of Ensemble-MOS for ECMWF-ENS a study has been carried out with a restricted set of model variables of TIGGE, see 2.3. Training is based on ensemble data and corresponding observations from 2002 - 2012, whereas statistical forecasting and verification is performed for 2013, see Hess et al. (2015) for details.



(a) Ensemble means of 3h forecasts of COSMO-DE-EPS (left) and statistical fits of 1h forecasts of Ensemble-MOS based on the same ensemble data (right), 6 years of data (2011-2016)



(b) As Fig. 7a, but for 8h and 6h forecasts of COSMO-DE-EPS (left) and Ensemble-MOS (right), respectively



(c) As Fig. 7a, but for three months of data (May-July 2016) and (d) 3h forecasts of the absolute errors of COSMO-DE-EPS (estimated as ensemble standard deviations*0.8) versus observed absolute errors of the ensemble means (left) and corresponding 1h error forecasts of Ensemble-MOS versus observed absolute errors of Ensemble-MOS (statistical fit of training period, right), 6 years of data (2011-2016)

(d) 3h forecasts of the absolute errors of COSMO-DE-EPS (estimated as ensemble standard deviations*0.8) versus observed absolute errors of the ensemble means (left) and corresponding 1h error forecasts of Ensemble-MOS versus observed absolute errors of Ensemble-MOS (statistical fit of training period, right), 6 years of data (2011-2016)

Figure 7. Scatter plots of COSMO-DE-EPS and statistical optimisations of Ensemble-MOS of the speeds of wind gusts versus observations, including means (solid) and confidence intervals (means +/- standard deviations, dashed); number of cases are given by histograms.

Results for 2m temperature forecasts are shown in Fig. 9, which illustrates essential improvements of postprocessed forecasts of Ensemble-MOS compared to raw ensemble output. The statistical forecast (blue) not only improves the raw ensemble mean (red), it also outperforms the high resolution ECMWF-IFS (this data has not been used for training). Also the statistical estimation of Ensemble-MOS of its own errors (pink), see Sec. 3.1, is more realistic over the first few days than the estimate of

425 the ensemble mean errors by the ensemble spread (yellow). Improvements of ECMWF-ENS with Ensemble-MOS were also obtained for 24h precipitation and cloud coverage.

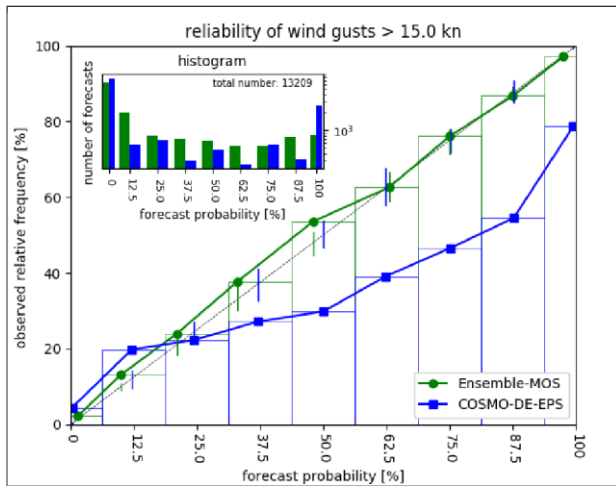


Figure 8. Reliability diagram for probabilities of wind gusts exceeding 7.7ms^{-1} (15.0kn). Probabilistic forecasts of Ensemble-MOS with lead time of 6h (green) and corresponding relative frequencies of COSMO-DE-EPS with lead time of 8h (blue). Verification is done for three months of data (May-July 2016) and 18 stations in Germany at about $N52^\circ$ latitude including Berlin for example. Vertical lines are 5%-95% consistency bars according to Bröcker and Smith (2006).

5 Conclusions

This paper describes the Ensemble-MOS system of DWD, which is set up to postprocess the ensemble systems COSMO-D2-EPS and ECMWF-ENS with respect to severe weather to support warning management. MOS in general is a mature and sound method and in combination with logistic regression, it can provide optimised and calibrated statistical forecasts. Stepwise multiple regression allows to reduce conditional biases that depend on the meteorological situation, which is defined by the selected predictors. The setup of Ensemble-MOS to use ensemble mean and spread as predictors is computationally efficient and simplifies forecasting of calibrated event probabilities and error estimates on longer forecast lead times. Ensemble-MOS is operationally applicable with regard to its robustness and computational costs and runs in trial mode in order to support warning management at DWD.

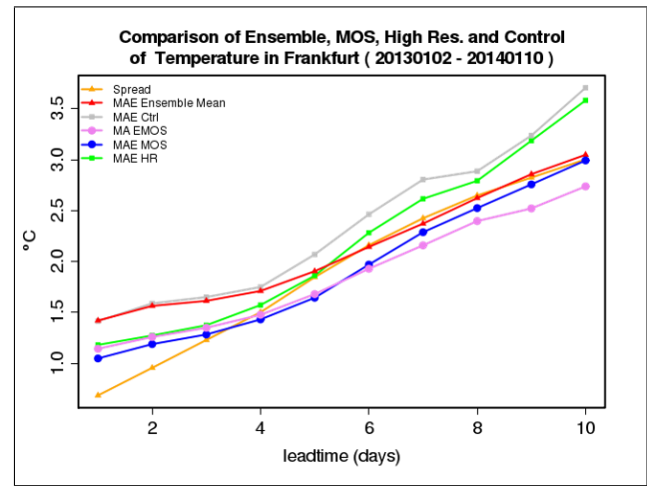


Figure 9. Mean absolute error (MAE) of 2m temperature forecast and error estimations depending on forecast lead time. Spread (yellow): spread of ECMWF-ENS (normalised to MAE); MAE Ensemble Mean (red): MAE of mean of ECMWF-ENS; MAE Ctrl (grey): MAE of ECMWF-ENS control run; MA EMOS (pink): Ensemble-MOS forecast of its own absolute errors (see Eq. (3): estimations of MAE EMOS, blue); MAE MOS (blue): MAE of Ensemble-MOS for ECMWF-ENS; MAE HR (green): MAE of high resolution ECMWF-IFS

The ensemble spread is less often detected as an important predictor as might be expected, however. One reason is that the spread actually carries less information about forecast accuracy as originally intended. It is often too small and too steady to account for current forecast errors. Another reason is that some forecast variables correlate with their own forecast errors (e.g. precipitation and wind gusts). If the ensemble spread does not provide enough independent information, it is not selected additionally to the ensemble mean during stepwise regression. Currently, only ensemble mean and spread are provided as predictors for Ensemble-MOS. The implementation of various ensemble quantiles as additional predictors is technically straightforward and could improve the exploitation of the probabilistic information of the ensemble.

Statistical forecasts of the speed of the wind gusts are excellent predictors for probabilities that given thresholds are exceeded and are used as predictors within logistic regressions. The same approach could be advantageous for probabilities of heavy precipitation as well, where estimated precipitation amounts would be used as predictors.

An important further step in probabilistic forecasting is the estimation of complete (calibrated) distributions of forecast variables rather than forecasting only discrete threshold probabilities. For wind gusts with Gaussian conditional errors as shown in Fig. 5 this seems possible but certainly requires additional research.

With its inherent linearity (also in the case of logistic regressions there are linear combinations of predictors only) MOS has its restrictions in modelling, but supports traceability and robustness, which are important features in operational weather forecasting. Therefore, MOS is considered a possible baseline for future statistical approaches based on neural networks and artificial intelligence that allow for more general statistical modelling. Many of the statistical problems will remain however, such as finding suitable reactions to changes in the NWP-models, (deterministic) consistency and the definition of useful probabilistic products (see Sec. 3.4.2) and the verification of rare events. In all cases, training data is considered of utmost importance, including the NWP-model output, as well as quality-checked historic observations.

Author contributions. Conceptual design of Ensemble-MOS, enhancement of software for probabilistic forecasting of ensembles (including logistic regression), processing of forecasts, verification and writing was done by the author.

Competing interests. The author declares that he has no conflicts of interest.

Acknowledgements. The author thanks ~~to~~ two anonymous reviewers for their constructive comments, which helped to improve the structure and clarity of the manuscript.

References

Baldauf, M., Seifert, A., Förstner, J., Majewski, D., Raschendorfer, M., and Reinhardt, T.: Operational convective-scale numerical weather prediction with the COSMO model: description and sensitivities, *Mon. Weather Rev.*, 139, 3887–3905, 2011.

- Ben Bouallègue, Z., Pinson, P., and Friederichs, P.: Quantile forecast discrimination ability and value, *Q. J. R. Meteorol. Soc.*, 141, 3415–465 3424, 2015.
- Bröcker, J. and Smith, L. A.: Increasing the Reliability of Reliability Diagrams, *Weather and Forecasting*, 22, 651–661, 2006.
- Buizza, R.: Ensemble forecasting and the need for calibration, in: *Statistical Postprocessing of Ensemble Forecasts*, edited by Vannitsem, S., Wilks, D. S., and Messner, J. W., chap. 2, pp. 15–48, Elsevier, Amsterdam, 2018.
- Buizza, R., Houtekamer, P. L., Toth, Z., Pellerin, G., Wei, M., and Zhu, Y.: A comparison of the ECMWF, MSC, and NCEP global ensemble 470 prediction systems, *Mon. Weather Rev.*, 133, 1076–1097, 2005.
- Friederichs, P., Wahl, S., and Buschow, S.: Postprocessing for Extreme Events, in: *Statistical Postprocessing of Ensemble Forecasts*, edited by Vannitsem, S., Wilks, D. S., and Messner, J. W., chap. 5, pp. 128–154, Elsevier, Amsterdam, 2018.
- Gebhardt, C., Theis, S. E., Paulat, M., and Ben Bouallègue, Z.: Uncertainties in COSMO-DE precipitation forecasts introduced by model perturbations and variation of lateral boundaries, *Atmos. Res.*, 100, 168–177, 2011.
- 475 Glahn, H. R. and Lowry, D. A.: The use of model output statistics (MOS) in objective weather forecasting, *J. Appl. Meteorol.*, 11, 1203–1211, 1972.
- Gneiting, T., Raftery, A. E., Westveld, A. H., and Goldman, T.: Calibrated probabilistic forecasting using ensemble model output statistics and minimum CRPS estimation, *Mon. Weather Rev.*, 133, 1098–1118, 2005.
- Gneiting, T., Balabdaoui, F., and Raftery, A. E.: Probabilistic forecasts, calibration and sharpness, *J. R. Statist. Soc. B*, 69, 243–268, 2007.
- 480 Hamill, T.: Verification of TIGGE multimodel and ECMWF reforecast-calibrated probabilistic precipitation forecasts over the conterminous United States, *Mon. Weather Rev.*, 140, 2232–2252, 2012.
- Hamill, T. M., Engle, E., Myrick, D., Peroutka, M., Finan, C., and Scheuerer, M.: The U.S. national blend of models for statistical postprocessing of probability of precipitation and deterministic precipitation amount, *Mon. Weather Rev.*, 145, 3441–3463, 2017.
- Hersbach, H.: Decomposition of the continuous ranked probability score for ensemble prediction systems, *Wea. Forecasting*, 15, 559–570, 485 2000.
- Hess, R., Glashoff, J., and Reichert, B. K.: The Ensemble-MOS of Deutscher Wetterdienst, in: *EMS Annual Meeting Abstracts*, 12, Sofia, 2015.
- Hess, R., Kriesche, B., Schaumann, P., Reichert, B. K., and Schmidt, V.: Area precipitation probabilities derived from point forecasts for operational weather and warning service applications, *Q. J. R. Meteorol. Soc.*, 144, 2392–2403, 2018.
- 490 Hosmer, D. W., Lemeshow, S., and Sturdivant, R. X.: *Applied Logistic Regression*, Wiley Series in Probability and Statistics, Wiley, New Jersey, 3rd edn., 2013.
- Knüpfper, K.: Methodical and predictability aspects of MOS systems, in: *Proceedings of the 13th Conference on Probability and Statistics in the Atmospheric Sciences*, pp. 190–197, San Francisco, 1996.
- Lerch, S., Thorarinsdottir, T. L., Ravazzolo, F., and Gneiting, T.: Forecaster’s dilemma: Extreme events and forecast evaluation, *Statistical Science*, 32, 106–127, 2017.
- Möller, A., Lenkoski, A., and Thorarinsdottir, T. L.: Multivariate probabilistic forecasting using ensemble Bayesian model averaging and copulas, *Q. J. R. Meteorol. Soc.*, 139, 982–991, 2013.
- Numerical Algorithms Group: *The NAG Library*, Oxford, UK, www.nag.com, 1990.
- Peralta, C., Ben Bouallègue, Z., Theis, S. E., Gebhardt, C., and Buchhold, M.: Accounting for initial condition uncertainties in COSMO-DE500 EPS, *J. Geophys. Res.*, 117, 2012.
- Primo, C.: Wind gust warning verification, *Adv. Sci. Res.*, 13, 113–120, 2016.

- Raftery, A. E., Gneiting, T., Balabdaoui, F., and Polakowski, M.: Using Bayesian model averaging to calibrate forecast ensembles, *Mon. Weather Rev.*, 133, 1155–1174, 2005.
- Ranjan, R. and Gneiting, T.: Combining probability forecasts, *Journal of the Royal Statistical Society Series B*, 72, 71–91, 2010.
- 505 Reichert, B. K.: The operational warning decision support system AutoWARN at DWD, in: 27th Meeting of the European Working Group on Operational Meteorological Workstation Systems (EGOWS), Helsinki, 2016.
- Reichert, B. K.: Forecasting and Nowcasting Severe Weather Using the Operational Warning Decision Support System AutoWARN at DWD, in: 9th Europ. Conf. on Severe Storms ECSS, Pula, Croatia, 2017.
- Reichert, B. K., Glashoff, J., Hess, R., Hirsch, T., James, P., Lenhart, C., Paller, J., Primo, C., Raatz, W., Schleinzer, T., and Schröder, G.: 510 The decision support system AutoWARN for the weather warning service at DWD, in: EMS Annual Meeting Abstracts, 12, Sofia, 2015.
- Schefzik, R. and Möller, A.: Ensemble postprocessing methods incorporating dependence structures, in: *Statistical Postprocessing of Ensemble Forecasts*, edited by Vannitsem, S., Wilks, D. S., and Messner, J. W., chap. 4, pp. 91–125, Elsevier, Amsterdam, 2018.
- Schefzik, R., Thorarinsdottir, T. L., and Gneiting, T.: Uncertainty quantification in complex simulation models using ensemble copula coupling, *Statist. Sci.*, 28, 616–640, 2013.
- 515 Slughter, J. M., Gneiting, T., and Raftery, A. E.: Probabilistic wind vector forecasting using ensembles and Bayesian model averaging, *Mon. Weather Rev.*, 141, 2107–2119, 2013.
- Swinbank, R. et al.: The TIGGE project and its achievements, *Bulletin of the AMS*, 97, 49–67, 2016.
- Vannitsem, S.: A unified linear Model Output Statistics scheme for both deterministic and ensemble forecasts, *Q. J. R. Meteorol. Soc.*, 135, 1801–1815, 2009.
- 520 Vannitsem, S., Wilks, D. S., and Messner, J. W., eds.: *Statistical Postprocessing of Ensemble Forecasts*, Elsevier, Amsterdam, Oxford, Cambridge, 2018.
- Wilks, D. S.: A skill score based on economic value for probability forecasts, *Meteorol. Appl.*, 8, 209–219, 2001.
- Wilks, D. S.: *Statistical Methods in the Atmospheric Sciences*, Academic Press, San Diego, 3rd edn., 2011.
- Wilks, D. S.: Univariate ensemble postprocessing, in: *Statistical Postprocessing of Ensemble Forecasts*, edited by Vannitsem, S., Wilks, D. S., 525 and Messner, J. W., chap. 3, pp. 49–89, Elsevier, Amsterdam, 2018.