

## Response to Comments

Journal: NPG

Title: Technique for solving for microseismic source location parameters based on adaptive particle swarm optimization

Author(s): Hong-Mei Sun et al.

MS No.: npg-2019-11

MS Type: Research article

Corresponding author: Dr. Rui-Sheng Jia

E-mail: jrs716@163.com

Dear Editors and Reviewers,

On behalf of my co-authors, we thank you very much for giving us an opportunity to revise our manuscript, we appreciate editor and reviewers very much for their positive and constructive comments and suggestions on our manuscript.

We have studied comments carefully and have made correction which we hope meet with approval. Attached please find the revised version, which we would like to submit for your kind consideration.

We would like to express our great appreciation to you and reviewers for comments on our paper. Looking forward to hearing from you.

Thank you and best regards !

Yours sincerely,

Rui-Sheng Jia

E-mail: jrs716@163.com

### **Referee #1:**

**Comments from Referees:** My issues mainly concern the necessity of clarifying in a more detailed way some concepts and analyses: - Some terms in the equations are not defined; - Confusion in discrimination between dimension of particle space and number of particles in

theswarm; - It is not explained how the initial values in the Geiger's method were chosen;-  
The analysis about the influence of lack of knowledge on velocity model has to be described  
more thoroughly;

In addition, it is very important to cite other works that could be easily found and read by the  
scientific community. Actually, many works cited in the introduction which could help to  
better contextualize the problem are very difficult to find.

I also noticed some typos in the manuscript. Since I am not English mother tongue, I suggest  
a potential revision of the manuscript with the support of Editorial office. Anyway, I provide  
you a line-by-line commented pdf version of the manuscript with some suggestions for  
improving it. Best regards.

Please also note the supplement to this comment: <https://www.nonlin-processes-geophys-discuss.net/npg-2019-11/npg-2019-11-RC1-supplement.pdf>

**Author's response:** Thank you for your careful review and good suggestions.

**Author's changes in manuscript:** We answered the questions one by one and revised the  
paper in accordance with comments pdf. We tried our best to improve the manuscript and  
made some changes in the manuscript. These changes will not influence the content and  
framework of the paper, and here we did not list the changes but marked in red in revised  
paper.

Once again, thank you very much for your comments and suggestions.

**Referee #2:**

**Q1:** Title: "Technique for solving for microseismic source location parameters based on  
adaptive particle swarm optimization" Suggested title: "The adaptive particle swarm  
optimization technique for solving microseismic source location parameters" (this is optional)

**Author's response:** Thank you for your good advice.

**Author's changes in manuscript:** We have revised the title according to your suggestion.

**Q2:** Page#2 Line#2: Please correct this reference "Lomax et al., 2011" with correct one  
"Lomax et al., 2001".

**Author's response:** We are very sorry for our incorrect writing.

**Author's changes in manuscript:** We have corrected the relevant errors according to your prompt.

**Q3:** Abstract OK (clear and concise (coherent) presentation, international standard write)  
1.Introduction - OK. Overview well described with references. 2.Microseismic source location principle - OK, concise, and clear. 3. Adaptive PSO algorithm for solving location parameters - OK 4. Simulation and case study - OK (more attention on errors techniques, because it builds conclusion #3) 5. Conclusions - OK (check conclusion #3, according precision) References - OK, written correct, clear, unique format. No skipped references in text or missing articles in the reference section according to the text. Tables and Figures are OK.

**Author's response:** Thank you for giving us credit for our manuscript!

**Author's changes in manuscript:** No modification.

**Q4:** Remarque for location accuracy: According to the conclusion #3, less errors on the location computations are provided by PSO method than LSM. Here, I would like to ask authors for completing following: 1. Case study 4.2: Blast's points A and B have precision on XYZ coordinates  $d_{XYZ}=0.1m$ , by default or for some measurement reasons ? (This is first question, which need to be answered with more details on coordinate positioning errors / GPS, or other).

**Author's response:** The XYZ coordinates and accuracy of the blasting point are given by mine surveyors, who use conventional mine survey methods to determine the blasting point without using GPS measurement.

**Author's changes in manuscript:** No modification.

**Q5:** 2. The finite dimension of Blast point: depends what you have used in mines (dynamite, or other..) it should have some volume in space. This gives some uncertainties on wave propagation, because still have no idea through which side of this cube/cylinder/or sphere, the wave goes out and made shock source. This is unknown, and this is the real source errors on locations, here. (My second question is how big was the real source ? - the volume, which can

gives you real dXYZ=?)

**Author's response:** This is really a very professional problem. Our experiment was carried out in the advance roadway of the coal mine working face. The diameter of the borehole is 42 mm, the depth of the hole is 1.2 m, and the length of the filled explosive is 1/4 of the hole depth. We approximate the blasting point to a spherical blasting point without considering the error you mentioned. However, your suggestions are very valuable for fine research on microseismic source location, and we will do further research according to your ideas.

**Author's changes in manuscript:** No modification

**Q6:** 3. The above 2 answers give the real positioning of source. Here, need to check the computed errors from their computing formula (for location parameters of the source) by each method and compare it with real errors. Then compare between and say can you distinguish (according the existing precision) which ones gives more appropriate results with real location ? Are really PSO better than LSM ? From my point of view, this question is still open, and need attention for completing.

**Author's response:** Yes.

**Author's changes in manuscript:** Limited to the length of the paper, we did not write these error analysis into the manuscript, but in part 4.2, we added relevant instructions. For details, please refer to P14, L3-L5(1<sup>st</sup>-Revised manuscript(Marked with red).pdf).

We tried our best to improve the manuscript and made some changes in the manuscript. These changes will not influence the content and framework of the paper. And here we did not list the changes but marked in red in revised paper.

# The adaptive particle swarm optimization technique for solving microseismic source location parameters~~Technique for solving for microseismic source location parameters based on adaptive particle swarm optimization~~

5 Hong-Mei Sun<sup>1,2</sup>, Jian-Zhi Yu<sup>1,2</sup>, Xing-Li Zhang<sup>1,2</sup>, Bin-Guo Wang<sup>1,2</sup>, Rui-Sheng Jia<sup>1,2</sup>

<sup>1</sup>College of Computer Science and Engineering, Shandong University of Science and Technology, Qingdao 266590, China

<sup>2</sup>Shandong Province Key Laboratory of Wisdom Mine Information Technology, Shandong University of Science and Technology, Qingdao 266590, China

*Correspondence to:* Rui-Sheng Jia (jrs716@163.com)

10 **Abstract.** An intelligent method is presented for locating microseismic source based on particle swarm optimization (PSO) concept. It eliminates microseismic source locating errors caused by inaccurate velocity model of the earth medium. The method uses as the target of PSO a global minimum of the sum of squared discrepancies between modeled arrival times and measured arrival times. The discrepancies are calculated for all pairs of detectors of a seismic monitoring system, Then, the adaptive PSO algorithm is applied to locate the microseismic source and obtain optimal value of the P-wave velocity. The

15 PSO algorithm adjusts inertia weight, accelerating constants, the maximum flight velocity of particles, and other parameters to avoid the PSO algorithm trapping by local optima during the solution process. The origin time of the microseismic event is estimated by minimizing the sum of squared discrepancies between the modeled arrival times and the measured arrival times. This sum is calculated using the obtained estimates of the microseismic source coordinates and P-wave velocity. The effectiveness of the PSO algorithm was verified through inversion of a theoretical model and two analyses of actual data

20 from mine blasts in different locations. Compared with the classic least squares method, the PSO algorithm displays faster convergence and higher accuracy of microseismic source locating. Moreover, there is no need to measure the microseismic wave velocity in advance: the PSO algorithm eliminates the adverse effects caused by error in the P-wave velocity when locating a microseismic source using traditional methods.

## 1. Introduction

25 Microseismic monitoring technology can be used for effective locating rock ruptures caused by rock burst, coal and gas outburst, water inrush, and other coal mine disasters. In recent years it was also used in early warning systems (Li et al., 2016; Pastán et al., 2015; Jia et al., 2015). The spatial coordinates of monitoring stations and the arrival times of the first seismic wave are used to determine the coordinates of the microseismic source, origin time, and other attributes. The accuracy of microseismic source location has been an important research topic in microseismic monitoring technology for a long time.

30 Current microseismic source location methods mostly come from seismology. Now they are widely used in

microseismic monitoring (Sun et al., 2016; Xue et al., 2015; Anikiev et al., 2014; Dong and Li, 2013). The earthquake source location method, based on time-difference principles was proposed (Geiger, 1912). Based on this work, Lienert et al. (1986) developed an improved algorithm called HYPOCENTER (Lienert et al., 1986). Since then, Nelson and Vidale (1990) presented the QUAKE3D method for 3-D velocity modeling (Nelson and Vidale, 1990). Lomax et al. (2000; 2001) worked out a nonlinear mode for locating global earthquakes in 3-D media and developed NonLinLoc software (Lomax et al., 2000; Lomax et al., 2011). Waldhauser and Ellsworth (2000) presented earthquake location algorithm based on a double time differences and developed HypoDD software (Waldhauser and Ellsworth, 2000). After occurrence of characteristics of the coal mine overburden layers and abscission zones, Gong et al. (2012) proposed a microseismic detecting algorithm for isotropic velocity model along mine length; the algorithm decreases source location errors (Gong et al., 2012). Dong et al. (2017) proposed mathematical algorithms of microseismic source location where there is no need to predict velocity in advance (Dong et al., 2011). The algorithms overcome location errors caused by errors of velocity measurement inherent in traditional location methods. Lin et al. (2010) analyzed the characteristics of linear location method and Geiger method and proposed a joint method to address the problem of low precision in estimation of source coordinates inherent in linear location method (Lin et al., 2010). Chen-Feng et al. (2015) proposed stratified methods for microseismic source location based on particle swarm optimization to obtain correlations among the source position, origin time, and microseismic propagation speed for a non-unique solution (Chen et al., 2009).

In conclusion we note that the microseismic source location accuracy is influenced by many factors such as the location method, the layout of the microseismic network, the velocity model, and the accuracy of the arrival time measurement (Dong and Li, 2013). Among these, the key factor influencing the stability of the location algorithm and the location accuracy is precision of the velocity model (Prange et al., 2015; Li et al., 2014; Usher et al., 2013). In this paper, an adaptive particle swarm optimization algorithm is proposed for microseismic source location which is based on average flying velocity of the particles. It uses as the PSO target function the ~~known in the mathematical statistic~~ "least square sum" of measured arrival time differences for all pairs of seismic sensors and uses the PSO algorithm to identify the source coordinates and microseismic wave velocity. Then, the origin time of the microseismic event is calculated according to the just determined source location and the wave velocity. Parameters of the PSO algorithm such as the inertia weight, the acceleration constants and the flight velocities of particles are adaptively adjusted to avoid the algorithm failure caused by the improper selection of these parameters. Careful dynamic adjusting PSO parameters improves the robustness of the PSO algorithm, reduces number of iteration and improves estimation of the microseismic source coordinates and the seismic wave velocity.

## 2. Microseismic source location principle

Suppose, that there are  $n$  geophones in the microseismic monitoring system. Assign the microseismic source location point

as  $r_0 = (x_0, y_0, z_0)$ , the coordinates of each geophone as  $r_i = (x_i, y_i, z_i), (i = 1, \dots, n)$ . Assuming that the rock layers between the microseismic sources and the geophone are uniform (i.e. uniform velocity model), the equivalent-average propagation velocity of the P-wave in the medium as  $V$ , the time of the source P-wave arrival to  $i$ -th geophone of the microseismic monitoring system as  $t_i$ , and the origin time of the microseismic event as  $t_0$ . Then, the theoretical (regression) arrival time differences for  $i$  and  $j$  geophones are

$$\Delta t_{i,j} = t_i - t_j = \frac{l_i - l_j}{V}, i, j = (1, \dots, n), \quad (1)$$

where

$$\begin{cases} l_i = \sqrt{(x_i - x_0)^2 + (y_i - y_0)^2 + (z_i - z_0)^2} \\ l_j = \sqrt{(x_j - x_0)^2 + (y_j - y_0)^2 + (z_j - z_0)^2} \end{cases}$$

The differences  ~~$\Delta t_{i,j}(r_0)$~~  between the difference of the regression arrival times  $\Delta t_{i,j}(r_0)$  and the difference of the measured arrival times  $\Delta t'_{i,j}$  is analogous to double-difference concept introduced by Waldhauser and Ellsworth (2000). ~~and~~ The sum of their squares reflect the degree of discrepancies between regression and observed arrival times. The equation for estimation of the microseismic source position has the form:

$$Q(r_0, V) = \sum_{i,j=1}^n \left( \Delta t'_{i,j} - \frac{l_i(r_0) - l_j(r_0)}{V} \right)^2 = \min_{r_0, V}. \quad (2)$$

The estimates of microseismic source coordinates  $\hat{r}_0 = (\hat{x}_0, \hat{y}_0, \hat{z}_0)$  and equivalent P-wave velocity in the medium  $\hat{V}$  correspond to those values of  $r_0 = (x_0, y_0, z_0)$  and  $V$  in equation (1), (2) for which the function  $Q(r_0, V)$  reaches a global minimum in the ranges of possible values of the microseismic source coordinates and medium equivalent velocity.

According to time difference location principles, the equation for calculation of the source origin time  $t_0$  has the following form

$$\min_{t_0} F(t_0) = \min_{t_0} \sum_{i=1}^n \left( \hat{t}_i - t_0 - \frac{l_i(\hat{r}_0)}{\hat{V}} \right)^2 \quad (3)$$

In the equation,  $\hat{t}_i$  denotes the measured travel times: For a case where signal-to-noise ratios in observed signals from microseismic source are sufficiently high and earth medium between the source and geophones are homogeneous  $\min_{t_0} F(t_0) \approx 0$  and estimate of the microseism origin time can be calculated as:

$$\hat{t}_0 \approx \frac{1}{n} \sum_{i=1}^n \left( \hat{t}_i - \frac{l_i(\hat{r}_0)}{\hat{V}} \right). \quad (4)$$

In solving for the seismic source location and origin time, the estimates of source coordinates  $\hat{r}_0 = (\hat{x}_0, \hat{y}_0, \hat{z}_0)$  and the equivalent wave velocity  $\hat{V}$  are obtained first according to equation (2). Then, the estimate of the origin time is determined by substituting the estimated values  $\hat{r}_0$  and  $\hat{V}$  into equation (3) (or in equation (4) for the case where

$\min_{t_0} F(t_0) \approx 0$ ). Because equation (2) is a nonnegative function of  $(x_0, y_0, z_0)$  and  $V$ , a minimum  $\min_{r_0, V} Q(r_0, V)$  a always

exists and can be found by the nonlinear fitting methods. The classic method is the "minimum least square solution" .

However, in this solution the source location estimate  $\hat{r}_0$  e c correlates with the origin time estimate  $\hat{t}_0$ , and the algorithm has a slow convergence for the velocity  $V$ . It is easy also to get a non-unique solution (Chen et al., 2009). To overcome these problems, this paper introduces an adaptive PSO algorithm to optimize the solution process.

Source location based on time difference principle is a multi-extremum non-linear problem. The most popular method is the classical method proposed by Geiger ~~in (1912)~~ and various improvements thereafter (~~Geiger, 1912~~). This kind of method is a solution method in the linear category. That is to say, according to Taylor's formula, the non-linear problem is transformed into a linear problem, and then different strategies are adopted to solve the linear equation system. In many cases, such as second order or more will appear. Problems such as in appropriate omitting of terms, unreasonable selection of initial values, and trapping solutions into local minima , etewill occur (Lee and Stewart, 1981). The Particle Swarm Optimization (PSO) method is simple to operate, easy to use, and easy to get the global optimal solution for multi-extremum non-linear problems. Therefore, the improved PSO method is introduced to solve the above problems.

### 3. Adaptive PSO algorithm for solving location parameters

#### 3.1 PSO principle

The PSO is an evolutionary computation technique developed by Eberhart and Kennedy ~~in 1995 year (Eberhart and Kennedy, 1995)(1995)~~. It is an evolutionary algorithm similar to a simulated annealing optimization algorithm for a problem of iterative improving a candidate for the solution with regard to a given measure of quality. PSO is an intelligent computational algorithm for analyzing the dynamic behavior of a swarm of ~~partieles~~ particles. In comparison with other similar algorithms PSO has such advantages as simple implementation, high accuracy and fast convergence. It has been ~~suecess fully~~ successfully applied in the field of optimization in recent years (Fong et al. , 2016; Renaudineau et al., 2015; Sudheer et al., 2014). The basic PSO principles are as follows: PSO randomly initializes a set of particles in the solution space. Each particle flies through the solution space with a certain speed by following the current optimum particle and the optimal solution is found through the search in successive generations. In each generation, the particles update themselves by tracking two types of extreme values: local optimums and global optimum. First extreme values are the optimal values for every particle itself in a set of positions of this particle in the sequence of already existing generations. They are denoted as



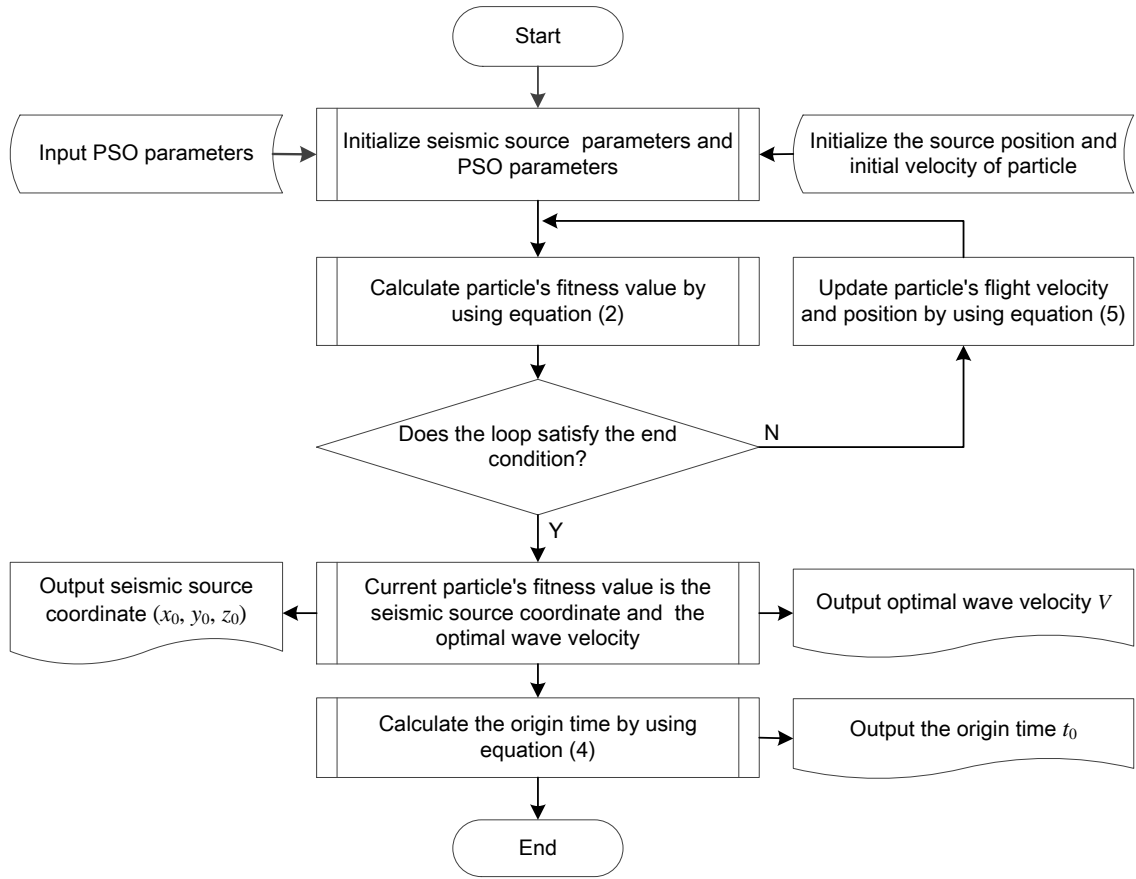
$pBest$ . Second optimum is the optimal value found in the all existing generations of the whole swarm of particles. It is denoted as  $gBest$ . After the two sorts of the optimal values are found, the particles update their speed and positions according to equation (5):

$$\begin{cases} v_{i,d}^{(k+1)} = w^{(k)}v_{i,d}^{(k)} + c_1^{(k)}r_1(p_{i,d}^{(k)} - x_{i,d}^{(k)}) + c_2^{(k)}r_2(p_{g,d}^{(k)} - x_{i,d}^{(k)}) \\ x_{i,d}^{(k+1)} = x_{i,d}^{(k)} + v_{i,d}^{(k+1)}, i = (1, \dots, n), d = (1, \dots, m) \end{cases}, \quad (5)$$

5 where  $m$  ~~is the dimension of the particle space~~ ~~is a number of particles in the swarm~~;  $n$  ~~is a number of particles in the swarm~~ ~~is the dimension of the particle space~~;  $k$  is a number of the current evolutionary particle generation;  $r_1$  and  $r_2$  are independent random values within  $[0, 1]$ ;  $w^{(k)}$  is the inertia weight at the  $k$ -th particle generation;  $c_1^{(k)}$  and  $c_2^{(k)}$  are acceleration constants at the  $k$ -th particle generation;  $v_{i,d}^{(k)}$  is the current flight speed for  $d$ -th component of  $i$ -th particle at the  $k$ -th generation;  $x_{i,d}^{(k)}$  is the  $d$ -th component of  $i$ -th particle current location at the  $k$ -th generation;  $p_{i,d}^{(k)}$  is the  $d$ -th coordinate of current optimal value for  $i$ -th particle itself at the  $k$ -th generation;  $p_{g,d}^{(k)}$  is the  $d$ -th component of current optimal value for total particle population up to the  $k$ -th generation.

### 3.2 The algorithm for solving source location parameters

15 The equation (2) concerns a ~~nonlinear optimization problems with multiple local extremums~~ ~~multi-extremum nonlinear optimization problem~~. The PSO algorithm was developed for solving such problems and can be applied to search for the optimal value in four-dimensional solution space composed of  $(x, y, z, v)$ , that is, to solve for the source location and the equivalent seismic velocity. The flowchart for the PSO algorithm is shown in Fig. 1.



**Fig. 1 Flowchart for the microseismic source location algorithm based on adaptive particle swarm optimization**

The procedure for the source location parameter evaluation based on the PSO algorithm is described as follows:

- 5 Step1: Initialize the model parameters for microseismic source location and the PSO parameters. Randomly initialize the source position and wave velocity of PSO algorithm. Initialization of the PSO parameters mainly includes the population size  $m$ , acceleration constants  $c_1$  and  $c_2$ , inertia weight  $w$ , calculation-computational accuracy  $\varepsilon$ , largest number of evolutionary generation  $T_{\max}$ , initial velocity and positions of the particles, and maximum particles flight speed  $v_{\max}$ . Then, initialize the iterative counter  $k$ .
- 10 Step2: Calculate particle's (microseismic source coordinate and velocity model) fitness value by using equation (2). The calculated values here are the source's 3-dimensional coordinates  $(x_0^{(k)}, y_0^{(k)}, z_0^{(k)})$  and equivalent velocity  $V^{(k)}$ , where  $k$  is the evolutionary generation number.
- Step3: Judge whether the current parameters of the particles meets the presupposed flight times and positioning accuracy or not. If it does, then go to Step 5; otherwise, go to Step 4.
- Step4: Update the flight velocity and particle positions according to equation (5), and then, goback to Step 2.
- 15 Step5: Output the estimated source's 3-dimensional coordinates  $(\hat{x}_0, \hat{y}_0, \hat{z}_0)$  and equivalent wave velocity  $\hat{V}$ .
- Step6: Calculate and output the origin time estimate  $\hat{t}_0$  by substituting estimated values of the source coordinates

$(\hat{x}_0, \hat{y}_0, \hat{z}_0)$  and equivalent velocity  $\hat{V}$  into equation (4). When the solution for the source coordinates and the origin time are obtained, the algorithm is over.

### 3.3 Discussion of PSO algorithm parameters

The parameter values for the PSO algorithm are the keys to influence the algorithm performance and efficiency. This paper proposes guiding principles for adjusting parameters of the PSO algorithm based on the practical approach to solving for the seismic source parameters.

(1) Inertia weight  $w^{(k)}$ :

Generally, optimization problems are divided into local optimum and global optimum. Local optimum is to find the minimum in a finite area of function value space, while global optimum is to find the minimum in the whole area of function value space. For an optimization problem, if a decision is better than any decision to solve the problem, it can be called the global optimization; Different from the global optimization, the local optimization is not the best in all decisions, but the decision is better than partial decision to solve the problem. As early as 1998, Shi and Eberhart (1998) et al. found that when the value of inertia weight  $w$  is relatively large, the global optimization ability of the PSO algorithm is strong, while the local optimization ability is weak (Shi and Eberhart, 1998). On the other hand, when the value of inertia weight  $w$  is relatively small, the local optimization ability of the PSO algorithm is strong, while the global optimization ability is weak. To avoid particles being stuck in a local optimum untimely or missing the global optimal solution, this study uses the strategy of self-adaptive inertia weight to determine the proper value of  $w$  (Zhang and Liao, 2009). The strategy is the following:

In order to enhance the exploring competence of the PSO algorithm, the population average velocity should be maintained rather high at the initial stages of evolution, while in the late stage of evolution a smaller population average velocity should be maintained in order to strengthen the development capabilities of the algorithm. We assume that evolution of the average particle flying velocity with changing number of generations  $k$  should be close to function defined by formula equation (6).

$$\bar{v}_{avg}^{(k)} = v_e^{(k)} = v_0 e^{-\left(\frac{2k}{T_{max} - T_1}\right)^2} \quad (6)$$

where  $v_0$  represents the initial average velocity of initial average rate population evolutionary velocity;  $T_{max}$  is the largest number of evolutionary generations;  $T_1$  is the initial value of evolutionary generations number of evolved generations.

We will call  $v_e^{(k)}$  as expected value of the average flying velocity for a particle population at  $k$ -th generation. The actual average velocity of the particle swarm at  $k$ -th generation is given by the formula equation (7):

$$v_{avg}^{(k)} = \frac{1}{m} \sum_{i=1}^m \sqrt{\sum_{d=1}^4 (v_{i,d}^{(k)})^2} \quad (7)$$

Where  $v_{i,d}^{(k)}$  represents the velocity of  $d$ -th component of the  $i$ -th particle at  $k$ -th generation.

Assign the initial inertia weight as  $w$ . Designate  $w^{(k)}$  inertia weight for the  $k$ -th particle generation. Then the inertia weight  $w^{(k+1)}$  for  $(k+1)$ -th generation is determined by [formula equation \(8\)](#):

$$\begin{cases} \text{if } v_{avg}^{(k)} > v_e^{(k)} \text{ then } w(k+1) = w(k) / p, \\ \text{if } v_{avg}^{(k)} < v_e^{(k)} \text{ then } w(k+1) = w(k) \cdot p, \\ \text{if } v_{avg}^{(k)} = v_e^{(k)} \text{ then } w(k+1) = w(k), \\ \text{if } w(k+1) > w_{max} \text{ then } w(k+1) = w_{max}, \\ \text{if } w(k+1) < w_{min} \text{ then } w(k+1) = w_{min}, \end{cases} \quad (8)$$

5 where  $p$  is a some constant. Practice has proved that the best value of  $p$  is 1.05 (Zhang and Liao, 2009).

Substitution of  $w^{(k)}$  given by equation (8) into equation (5) ensures that average velocity  $v_{avg}^{(k)}$  will reduce to zero in the process of population evolution.

(2) Acceleration constants  $c_1^{(k)}$  and  $c_2^{(k)}$ :

10 Gao and Liao noted that the position  $x_{i,d}^{(k)}$  of each particle in the population eventually converges to  $(c_1 P_{i,d} + c_2 P_{g,d}) / (c_1 + c_2)$  (Gao and Liao, 2012), This means that the position of the particles for large  $k$  will stay close to

the lines that connect the global optimum point with the local optimum point. [Therefore, in the first stage of particle swarm optimization, the optimum value of the particle itself is an important parameter to make all particles converge to global optimum. So, the optimal value of the particle themselves are very important at the first phase of particle swarm optimization to make all the particles converge to the global optimum.](#)

15 However, if  $c_1^{(k)}$  would be high for all  $k$  then the optimum position of the particle swarm would, generally, not coincide with the global optimum of the target function (2). Therefore, at the first stage of PSO,  $c_1^{(k)}$  should take a larger value, while  $c_2^{(k)}$  should take a smaller value to promote the local optimization speed. When particle swarm optimization is near to its end, the role of the global optimal value should be highlighted. At this stage,  $c_1^{(k)}$  should take a smaller value, while  $c_2^{(k)}$  should take a larger value to help the particle swarm converge to the global optimum. Therefore, the acceleration

20 constants  $c_1^{(k)}$  and  $c_2^{(k)}$  should be designed based on the average velocity of the particle swarm:

$$c_1^{(k)} = C \frac{v_{avg}^{(k)}}{v_{max}}, c_2^{(k)} = C \left( 1 - \frac{v_{avg}^{(k)}}{v_{max}} \right). \quad (9)$$

[C is a positive integer, usually in the range \[2,5\].](#)

(3) The maximum flight velocity of particles  $v_{max}$ :

The selection and analysis of the maximum flight velocity of particles should proceed as follows: if  $v_{max}$  is too small,

then the particle movement will be restricted. In this situation, the algorithm cannot converge fast enough and may not even be able to achieve the optimal solution. On the other hand, if  $v_{\max}$  is too large, then the optimal solution may be missed (Eslami et al., 2014; Abido 2002). Therefore, it is very important to dynamically adjust the  $v_{\max}$  value. In this study, the  $v_{\max}$  value is obtained as follows:

$$v_{\max,d} = \frac{x_{\max,d} - x_{\min,d}}{N} \quad (10)$$

Where  $x_{\max,d}$  and  $x_{\min,d}$ , respectively, stand for the largest and smallest values in the  $d$ -th dimension of the possible particle positions, and  $N$  is the number of intervals in each space dimension  $N$  are selected as 1.0 and 10 respectively.

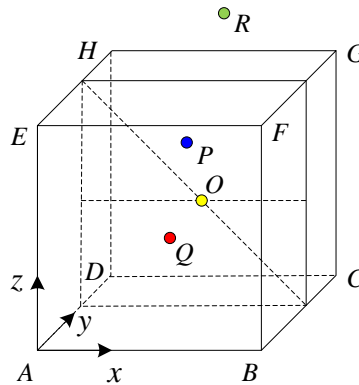
#### 4. Simulation and case study

##### 4.1. Simulation analysis and discussion

For the simulation, eight sensors comprising a microseismic localization system are located on the eight vertices of a cube. Four microseismic sources, O, P, Q, R, etc., are located inside the cube, and S-R is located outside the cube. The coordinates of the geophones and the microseismic sources are shown in Table 1, and the relative locations of the geophones and microseismic sources are shown in Fig. 2.

**Table 1 Coordinates of sensors and microseismic sources**

Geophone coordinates (m)	Microseismic source coordinates (m)
A(0,0,0)	O(400,400,400)
B(800,0,0)	P(300,600,700)
C(800,800,0)	Q(300,200,300)
D(0,800,0)	R(500,600,1200)
E(0,0,800)	
F(800,0,800)	
G(800,800,800)	
H(0,800,800)	



**Fig. 2 The locations of geophones and microseismic sources**

~~The principle of microseismic location simulation: Firstly, the travel time and monitoring arrival time of~~

microseismic theory are calculated by formula (1) according to the position of sensors, source location and wave velocity; then, the location of microseismic source, the time of occurrence and the velocity model of microseismic wave propagating in medium are determined by formula (3) and formula (4) as true values.

It is assumed that the velocity of wave propagation ( $v$ ) in the medium is unknown. According to the coordinates of geophones and microseismic sources shown in Table 1, the travel time  $t$  and origin time  $t_0$  can be calculated. Then,  $t$  and  $t_0$  are substituted into equations (2), (3) and (4), and inversion is carried out values are obtained by inversion using the least squares method (Dong et al., 2011) and the PSO proposed in this paper. The microseismic source location, equivalent wave velocity, and origin time are obtained. Then, the results calculated using the two different methods are compared using error analysis, the algorithm execution time, and the number of iterations.

Suppose a microseismic velocity  $v=5.60\text{m/ms}$ , and suppose the microseismic source's origin time is 08:00:00:000 on a certain day. According to the coordinate information in Table 1, the trigger time of the microseismic waves recorded by the geophones triggered can be calculated, as shown in Table 2. For the convenience of discussion, we abbreviate the least square method as LSM. Take the method of Geiger source location using the least squares method as the LSM algorithm, and the method in this paper is the PSO algorithm. The computational accuracy of the LSM algorithm is  $\varepsilon=1.0\times 10^{-10}$ . The parameters for the PSO algorithm are as follows: population size  $m=50$ ,  $w_0=1$  and  $T_{max}=3000$ . The inertia weight  $w$ , acceleration constants  $c_1$  and  $c_2$  and particles' maximum flight velocity of particles  $v_{avg}$  are determined by equations (6), (9) and (10). MATLAB programming was used to implement the LSM and PSO algorithms to obtain solutions at four points O, P, Q and R. The calculated results are shown in Table 3.

**Table 2 Travel time of a microseismic wave**

Geophones	Travel time(ms)/ms			
	O	P	Q	R
A	123.72	173.13	83.76	255.68
B	123.72	187.29	110.08	245.50
C	123.72	157.71	149.40	223.75
D	123.72	140.61	131.22	234.87
E	123.72	121.11	110.08	156.70
F	123.72	140.61	131.22	139.47
G	123.72	97.81	165.60	96.16
H	123.72	66.82	149.40	119.79

**Table 3 Comparison of the LSM and PSO algorithms**

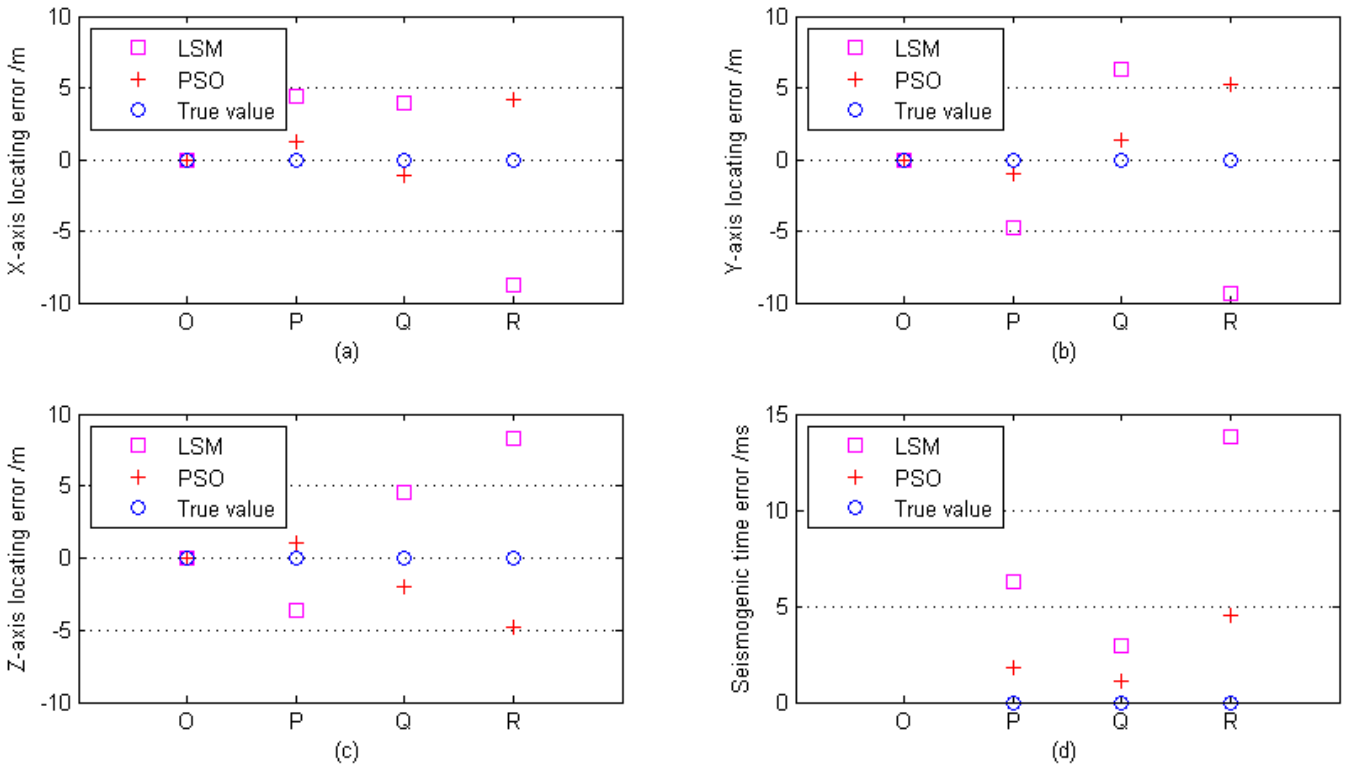
Algorithm		Microseismic source O				
		$x(m)/m$	$y(m)/m$	$z(m)/m$	$t_0(ms)/ms$	$v(m/ms)(m/ms)$
LSM	Initial value	350.00	350.00	350.00	0.00	1.00
	Calculated value	400.00	400.00	400.00	-	-
PSO	Initial value	0~800	0~800	0~800	-	0~10
	Calculated value	400.00	400.00	400.00	-	-

True value		400.00	400.00	400.00	0.00	5.60
Algorithm		Microseismic source P				
		$x(m)$	$y(m)$	$z(m)$	$t_0(ms)$	$v(m/ms)$
LSM	Initial value	100.00	400.00	500.00	0.00	1.00
	Calculatedvalue	304.37	295.22	703.63	6.27	5.85
PSO	Initial value	0~800	0~800	0~800		0~10
	Calculatedvalue	301.23	298.95	701.02	1.81	5.67
True value		300.00	300.00	700.00	0.00	5.60
Algorithm		Microseismic source Q				
		$x(m)$	$y(m)$	$z(m)$	$t_0(ms)$	$v(m/ms)$
LSM	Initial value	100.00	100.00	100.00	0.00	1.00
	Calculatedvalue	263.98	206.33	304.59	2.92	5.81
PSO	Initial value	0~800	0~800	0~800		0~10
	Calculatedvalue	258.84	201.35	298.01	1.11	5.68
True value		260.00	200.00	300.00	0.00	5.60
Algorithm		Microseismic source R				
		$x(m)$	$y(m)$	$z(m)$	$t_0(ms)$	$v(m/ms)$
LSM	Initial value	300.00	400.00	1000.00	0.00	1.00
	Calculatedvalue	491.28	590.68	1208.32	13.82	5.92
PSO	Initial value	0~800	0~800	0~800		0~10
	Calculatedvalue	504.21	605.23	1195.25	4.48	5.70
True value		500.00	600.00	1200.00	0.00	5.60

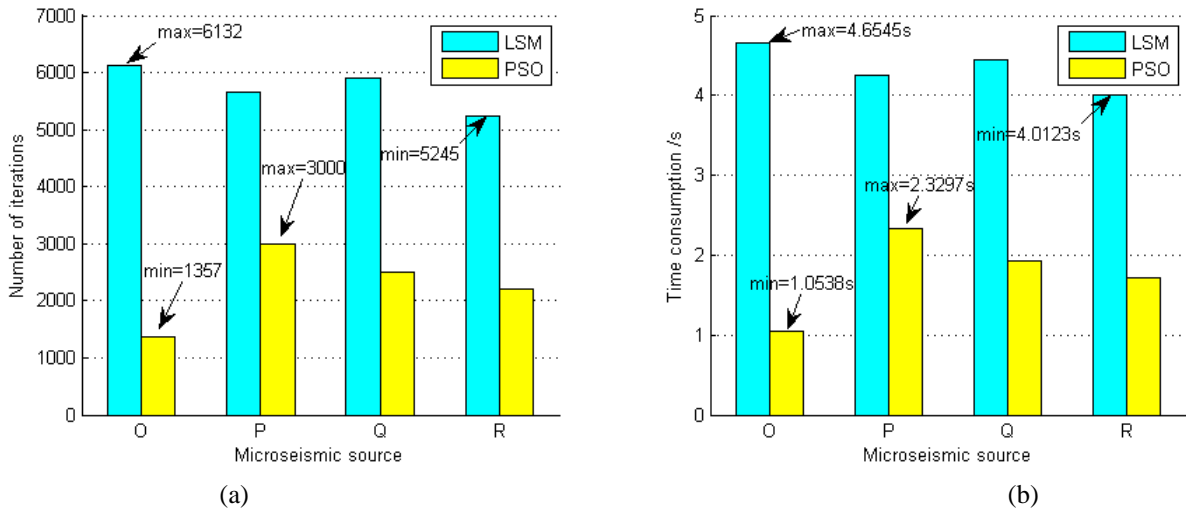
Notes: “-” means that the value cannot be obtained directly; the calculatedvaluefrom the PSO is the average value obtained after running the PSO algorithm twenty times.

Based on the results shown in Table 3, the LSM algorithm has different convergent results for different initial values. When the initial value is far from the true value, the required calculation accuracy  $\varepsilon$  can be met, but the result does not approach the true value. In some cases, there are multi-group results, so the initial values need to be repeatedly adjusted in order to make the LSM algorithm approach the true value. For the PSO algorithm, a wide range of initial values was used for the microseismic source location parameters. The only variables that need to be solved for are the 3-dimensional coordinates of the arbitrary point inside the space surrounded by the seismic detection equipment. Thus, the calculated results can better approach the true value, and the solution is unique. This occurs because by improving the parameter selection rules, the condition that particles are trapped in local optima or fly over the global optimum during the process of searching is avoided; thus, the optimization ability of the PSO algorithm is improved.

Comparisons of the errors in the microseismic source location parameters obtained using the LSM and PSO algorithms are shown in Fig.3, and the comparison of iterations between the two algorithms is shown in Fig.4.



**Fig. 3 Comparisons of the errors in the source location parameters between the LSM and PSO algorithms: (a) Comparisons of the x-axis locating error; (b) Comparisons of the y-axis locating error; (c) Comparisons of the z-axis locating error; (d) Comparisons of the errors in the origin time estimation/seismogenic time error.**



**Fig. 4 (a) Comparison of the number of iterations between the LSM and PSO algorithms, where the max and min markers are highlighting the max and min number of iterations for each algorithm; (b) Comparison of the computing time between the LSM and PSO algorithms, where the max and min markers are highlighting the max and min amount of computing time for each algorithm.**

10 The selection of initial values for parameters in the LSM algorithm is comparatively complex, so the basic principle of parameter selection is to approach the desired value as near as possible. The selection of different initial values for parameters in the LSM algorithm has a greater influence on the accuracy of the solution location compared to PSO and results in a large difference in the number of iterations between the two methods. The improved PSO algorithm only needs to be provided a value range for the initial parameters. Then, it automatically selects parameter values to iterate, and the



algorithm runs for a maximum number of 3000 iterations. As is shown in Table 3, Fig.3, and Fig.4, compared with the LSM algorithm, the PSO algorithm not only improves the computational accuracy of the desired value of microseismic source parameters but also increases the computational efficiency and determines the microseismic source's real-time location.

The following is a discussion of some special conditions. 1) Since source O is located at the cube's center of gravity, the distance between O and each geophone is the same. As a result, both the LSM and PSO algorithms can converge to the true value when solving for the seismic source coordinates  $(x_0, y_0, z_0)$  but cannot solve the origin time  $t_0$  because regardless of which value of wave velocity  $v$  is selected, the value of Q in equation (2) tends to be zero. Because of the randomness of the wave velocity, the origin time  $t_0$  cannot be solved according to equation (3), ~~so when positioning the geophones, the same distance between the microseismic source and each geophone should be avoided.~~ 2) Since source R is located outside the cube, ~~The average distance from this point to each sensor is larger than that from other points in the cube, such as P and Q points, to each sensor. the average distance between R and each geophone is greater than the average distance from R to other points (such as P and Q).~~ The error in the equivalent wave velocity, which is solved by iteration, causes greater location error for R than for other points in the cube, so the layout of the seismic detection equipment should ensure that the microseismic source is within the detection array.

#### 4.2 Case study

Because rock burst occurs frequently at a mine in central China, a Paladin 24-bit, multi-channel microseismic monitoring system of the ESG Company in Canada was installed. In total, 18 seismic detection devices are installed in different positions at the mine, 9 seismic detection devices are installed at the -520 level and 9 at the -840 level. A blasting operation with known position was conducted in order to verify the validity of the PSO algorithm. Ten seismic detection devices detected microseismic signals during the blasting operation. Pre-treatments of the data, such as denoising and filtering, were performed on the detected signals in order to obtain a high SNR. Then, two blast points that showed an obvious rising waveform trend, making it easy to capture the trigger time, were selected and analyzed. The position coordinates of the two points are A(1495.60, 998.50, -685.10) and B(1298.70, 855.30, -576.20). The coordinates of the 10 seismic detection devices and the trigger times detected are shown in Table 4. The relative position of the 10 geophones and the 2 burst points is shown in Fig. 5.

**Table 4 Geophone coordinates and travel time from the burst point**

Geophone No.	Geophone Coordinates <del>(m)</del>			Travel time <del>(ms)</del>	
	$x$	$y$	$z$	Burst point A	Burst point B
2#	751.26	549.55	-520.51	157.39	112.01
3#	755.40	1302.64	-523.35	146.02	146.02
4#	1752.37	700.70	-519.43	76.08	86.03
6#	2005.65	1298.72	-521.35	109.69	149.34

9#	1512.59	1149.63	-519.15	39.98	65.41
12#	995.87	1305.66	-820.20	107.27	106.07
13#	1248.20	1597.85	-821.95	118.96	140.72
15#	1500.46	550.75	-819.87	82.76	77.72
16#	2254.38	1303.22	-818.35	146.92	192.00
17#	1750.34	998.48	-822.73	52.20	96.23

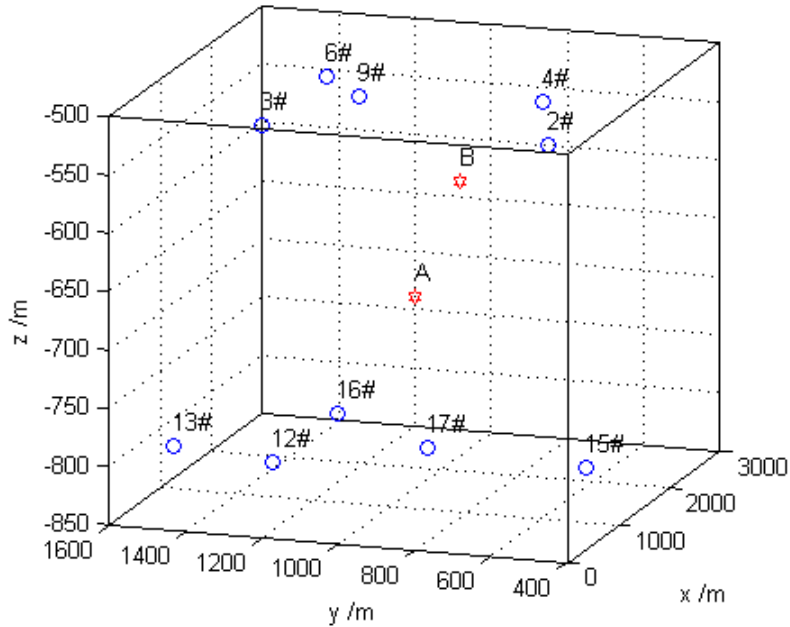


Fig. 5 Schematic diagram of the relative position of the 10 geophones and the 2 burst points

The experiment was carried out in the advance roadway of the coal mine working face. The diameter of the borehole is 42 mm, the depth of the borehole is 1.2 m, and the length of the filled explosive is 1/4 of the borehole depth. We approximate the blasting point to a spherical blasting point without considering the error caused by the assumption. Based on the data presented in Table 4, the PSO algorithm and LSM algorithm were used to solve for the seismic source location parameters and origin time. A comparison of the error is shown in Table 5.

Table 5 Error comparison for the LSM algorithm and PSO algorithm

		$X_{err}(m)$	$Y_{err}(m)$	$Z_{err}(m)$	$T_{err}(ms)$
		ms			
Burst point A	LSM	9.65	10.39	13.05	18.63
	PSO	6.78	5.27	9.79	10.33
Burst point B	LSM	8.28	11.22	12.74	27.24
	PSO	5.96	6.29	8.26	15.95
Error	LSM	8.97	10.81	12.90	22.94
	PSO	6.37	5.78	9.03	13.14

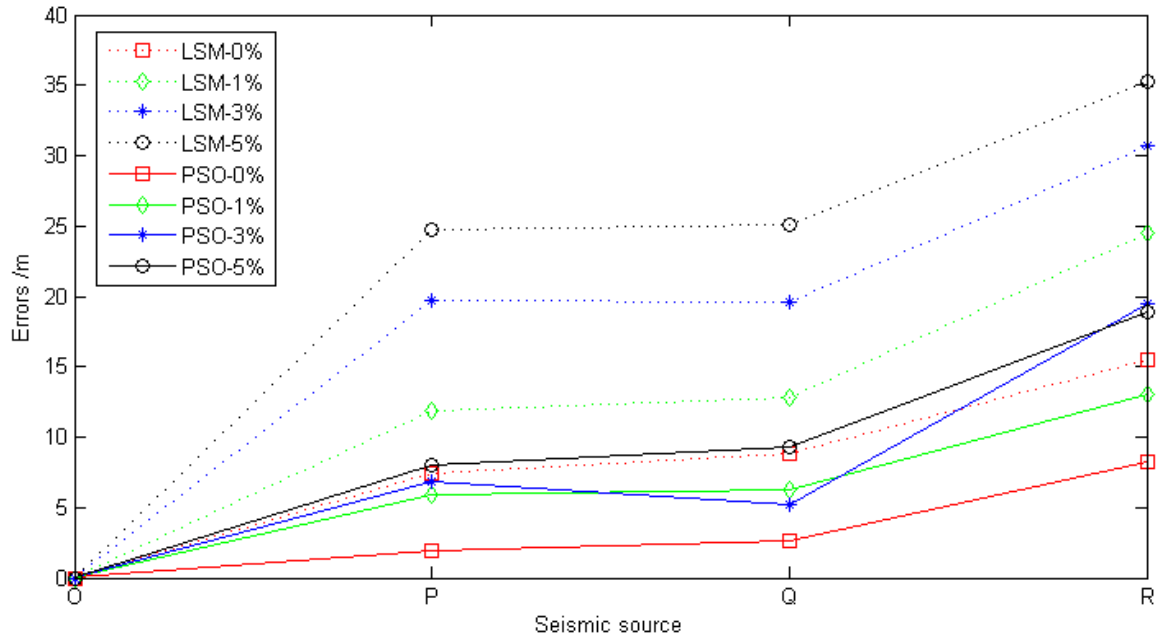
According to Table 5, the accuracy of the LSM algorithm is relatively poor. Its average deviation in the X, Y and Z directions are 8.97m, 10.81m and 12.90m. The results were obtained after repeated adjustment of the initial location parameters for the seismic source and the wave velocity. The PSO algorithm can automatically approach the true values

according to the given initial parameter range. Its average deviation in the X, Y and Z directions are 6.37m, 5.78m and 9.03m, with errors that are less than 5%. Therefore, the PSO can achieve high positioning accuracy in the geophone array range.

The simulation example and blasting experiment discussed above clearly demonstrate that the PSO optimization algorithm is better than LSM when solving for the microseismic positioning parameters and the seismic origin time. The algorithm has high positioning accuracy and fast convergence speed, and it is easy to set the initial parameters. This is because the adaptive PSO algorithm is more accurate in fitting the relationship between each coordinate for the seismic detection equipment and the time difference. It can dynamically adjust the velocity value in an iterative process until the value approximates the optimal average velocity, which can account for the nonlinear relationship between each coordinate of the seismic detection equipment and the time difference and can greatly reduce the impact of the velocity error on the positioning precision.

### 4.3 Discussion

In order to further verify the effectiveness of the proposed method, the experiments in Section 4.1 are compared and analyzed under different wave velocities. The ~~idea of~~ comparative analysis ~~steps are as follows~~ is as follows: (1) Using PSO method and LSM method to locate microseismic source when using real velocity (i.e. error floating 0%); (2) Because it is difficult to measure real wave ~~velocities-velocity~~ in practical engineering, ~~assuming that there are several~~ small errors of 1%, 3% ~~and~~ 5% is given to the PSO method and LSM method respectively, that is, when the wave velocities ~~are~~ 5.544, 5.432 and 5.320m/ms, two methods are used to locate the microseismic source; (3) Steps (1), (2) are used to locate the microseismic source, and the absolute distance error is calculated by comparing the locating results with the real values. ~~The locating results under different conditions are analyzed, and the errors of each coordinate and absolute distance are calculated.~~ The absolute distance errors ~~of calculated by~~ the ~~traditional~~ PSO method and the LSM ~~new~~ method at different wave velocities are plotted in Fig.6.



**Fig. 6 Comparison of locating errors between PSO method and LSM method at different wave velocities**

As we can be seen from Fig. 6, the LSM method will cause large errors in the location system under the disturbance of different wave velocities. The maximum error is up to 25m (Except for the seismic source R), while the PSO method is more stable. The reason is that the PSO method can accurately fit the relationship between the coordinates of each sensor and the time difference, because it does not depend on the velocity value when solving the seismic location parameters. The LSM method needs accurate velocity to solve the seismic location parameters, and the disturbance of velocity has a great influence on the results. That is to say, in the case of wave velocity disturbance, even if there is a small error in the value of wave velocity, there will be a large error in the location result of LSM method. Because of the complexity of rock media, the average velocity of each region is not necessarily the same, and the influence of construction technology, it is very difficult to determine the velocity of anisotropic media, which is the main reason for the low positioning accuracy of LSM method. In addition, when the source is outside the sensor array (Such as seismic source R), the errors of the two methods are very large, but the LSM method has greater locating errors than PSO method, which shows that the sensor arrangement should ensure that the seismic source is within the array as far as possible.

## 5. Conclusions

(1) An adaptive PSO optimization method is proposed based on the average population velocity in order to solve for location parameters of the seismic source in a location model. This method takes the minimum residual sum of squares between the time difference regression values and the time difference measured values for two seismic detection devices, and the PSO algorithm is designed to solve for the seismic source coordinates and the equivalent wave velocity and then solve for the seismic source origin time.

(2) Combined with the actual need to solve for seismic source parameters, the model constraints of inertia weight, accelerating constants, the maximum flight velocity of particles, and other parameters are discussed in order to improve the optimization capacity of the PSO algorithm and avoid being trapped in a local optimum.

(3) Comparative analysis shows that when solving for the seismic source location parameters, compared with the classic least squares method, the adaptive PSO algorithm has high positioning accuracy and fast convergence, and it is easy to set the initial parameter values.

## Acknowledgments

This work was funded by the Key Research and Development Program of Shandong Province (2017GSF20115, 2018GGX109013), the Natural Science Foundation of Shandong Province (ZR2018MEE008) and the Project of Shandong Province High Educational Science and Technology Program (J18KA307).

## References

- Abido M. A. Optimal power flow using particle swarm optimization. *Int. J. Electr. Power Energy Syst.*, 24(7), 563-571, 2002.
- Anikiev D., Valenta J., Staněk F., et al. Joint location and source mechanism inversion of microseismic events: benchmarking on seismicity induced by hydraulic fracturing. *Geophys. J. Int.*, 198(1), 249-258, 2014.
- Feng, G. L., Feng, X. T., Chen, B. R., et al. Sectional velocity model for microseismic source location in tunnels. *Tunn. Undergr. Sp. Tech.*, 45, 73-83, 2015. Chen B., Feng X., Li S. et al. Microseism source location with hierarchical strategy based on particle swarm optimization. *Chin. J. Rock Mech. Eng.*, 28(4), 740-749, 2009.
- Dong L., Li X. A microseismic/acoustic emission source location method using arrival times of ps waves for unknown velocity system. *Int. J. Distrib. Sens. Netw.*, 2013(3), 485-503, 2013.
- Dong, L., Sun, D., Li, X., & Du, K. Theoretical and experimental studies of localization methodology for ae and microseismic sources without pre-measured wave velocity in mines. *IEEE Access*, 99, 16818-16828, 2017. Dong L. J., Li X. B., Tang L. Z., et al. Mathematical functions and parameters for microseismic source location without pre-measuring speed. *Chin. J. Rock Mech. Eng.*, 30(10), 2057-2067, 2011.
- Eberhart R C, Kennedy J. A new optimizer using particle swarm theory. *Proceedings of the Sixth International Symposium on Micro Machine and Human Science*, Nagora, Japan, 39-43, 1995.
- Eslami M., Shareef H., Taha M. R., et al. Adaptive particle swarm optimization for simultaneous design of upfc damping controllers. *Int. J. Electr. Power Energy Syst.*, 57(5), 116-128, 2014.
- Fong S., Wong R., Vasilakos A. Accelerated pso swarm search feature selection for data stream mining big data. *IEEE Trans. Serv. Comput.*, 9(1), 33-45, 2016.
- Gao Z., Liao X. Z. Hybrid adaptive particle swarm optimization based on average velocity. *Control Decis.*, 27(1), 376-381, 2012.
- Geiger L. Probability method for the determination of earthquake epicenters from arrival time only. *Bull. St. Louis. Univ.*, 8, 60-71, 1912.
- Gong S. Y., Dou L. M., Ma X. P., et al. Study on the construction and solution technique of anisotropic velocity model in the location of coal mine tremor. *Chinese J. Geophys.-Chinese Ed.*, 55(5), 1757-1763, 2012.
- Lee W H K, Stewart S W. *Principles and applications of microearthquake networks*. New York: Academic Press, 1981.
- Jia R. S., Liu C., Sun H. M., et al. A situation assessment method for rock burst based on multi-agent information fusion. *Comput. Electr. Eng.*, 45, 22-32, 2015.

- Li N., Wang E., Ge M., et al. A nonlinear microseismic source location method based on simplex method and its residual analysis. *Arab. J. Geosci.*,7(11), 4477-4486, 2014.
- Li X., Wang E., Li Z., Liu, Z., et al. Rock burst monitoring by integrated microseismic and electromagnetic radiation methods. *Rock Mech. Rock Eng.*,49, 1-14, 2016.
- 5 Lienert B R, Berge E, Frazer L.N. Hypocenter: an earthquake location method using centered, scaled, and adaptively damped least squares. *Bull. Seismol. Soc. Amer.*, 6(3), 771-783, 1986.
- Lin F., Li S. L., Xue Y. L., et al. Microseismic sources location methods based on different initial values. *Chin. J. Rock Mech. Eng.*,29(5), 996-1002, 2010.
- 10 Lomax A., J. Virieux, P. Volant and C. Berge, Probabilistic earthquake location in 3D and layered models: Introduction of a Metropolis-Gibbs method and comparison with linear locations, in *Advances in Seismic Event Location* Thurber, C.H., and N. Rabinowitz (eds.), Kluwer, Amsterdam, 101-134, 2000.
- Lomax A., A. Zollo, P. Capuano, and J. Virieux, Precise, absolute earthquake location under Somma-Vesuvius volcano using a new 3D velocity model, *Gephys. J. Int.*, 146,313-331, 2001.
- Nelson G D, Vidale J E. Earthquake locations by 3D finite difference travel times. *Bull. Seismol. Soc. Amer.*, 80(2), 395-410, 15 1990.
- Past  D., Estay R., Comte D., et al. Multifractal analysis in mining microseismicity and its application to seismic hazard in mine. *Int. J. Rock Mech. Min. Sci.*, 78, 74-78, 2015.
- Prange M. D., Bose S., Kodio O., et al. An information-theoretic approach to microseismic source location. *Geophys. J. Int.*,201(1), 193-206, 2015.
- 20 Renaudineau H., Donatantonio F., Fontchastagner J., et al. A pso-based global mppt technique for distributed PV power generation. *IEEE Trans. Ind. Electron.*,62(2), 1047-1058, 2015.
- Shi Y., Eberhart R. C. Parameter selection in particle swarm optimization. *Evolutionary Programming VII*. Springer Berlin Heidelberg, 1998.
- Sudheer C., Maheswaran R., Panigrahi B. K., et al. A hybrid svm-pso model for forecasting monthly streamflow. *Neural Comput. Appl.*,24(6), 1381-1389, 2014.
- 25 Sun H. M., Jia R. S., Du Q. Q., et al. Cross-correlation analysis and time delay estimation of a homologous micro-seismic signal based on the Hilbert-Huang transform. *Comput. Geosci.*, 91, 98-104, 2016.
- Usher P. J., Angus D. A., Verdon J. P. Influence of a velocity model and source frequency on microseismic waveforms: some implications for microseismic locations. *Geophys. Prospect.*, 61, 334–345, 2013.
- 30 Waldhauser F, Ellsworth W L. A double-difference earthquake location algorithm: method and application to the northern Hayward fault, California. *Bull. Seismol. Soc. Amer.*,90(6), 1353-1368, 2000.
- Xue Q., Wang Y., Zhan Y., et al. An efficient gpu implementation for locating micro-seismic sources using 3d elastic wave time-reversal imaging. *Comput. Geosci.*,82, 89-97, 2015.
- Zhang D. X., Liao R. Q. Adaptive particle swarm optimization algorithm based on population velocity. *Control Decis.*,24(8), 35 1257-1246, 2009.



## Technique for solving for microseismic source location parameters based on adaptive particle swarm optimization

Hong-Mei Sun<sup>1,2</sup>, Jian-Zhi Yu<sup>1,2</sup>, Xing-Li Zhang<sup>1,2</sup>, Bing-Guo Wang<sup>1,2</sup>, Rui-Sheng Jia<sup>1,2</sup>

<sup>1</sup>College of Computer Science and Engineering, Shandong University of Science and Technology, Qingdao 266590, China

5 <sup>2</sup>Shandong Province Key Laboratory of Wisdom Mine Information Technology, Shandong University of Science and Technology, Qingdao 266590, China

Correspondence to: Rui-Sheng Jia (jrs716@163.com)

**Abstract.** An intelligent method is presented for locating microseismic source based on particle swarm optimization (PSO) concept. It eliminates microseismic source locating errors caused by inaccurate velocity model of the earth medium. The method uses as the target of PSO a global minimum of the sum of squared discrepancies between modeled arrival times and measured arrival times. The discrepancies are calculated for all pairs of detectors of a seismic monitoring system, Then, the adaptive PSO algorithm is applied to locate the microseismic source and obtain optimal value of the P-wave velocity. The PSO algorithm adjusts inertia weight, accelerating constants, the maximum flight velocity of particles, and other parameters to avoid the PSO algorithm trapping by local optima during the solution process. The origin time of the microseismic event is estimated by minimizing the sum of squared discrepancies between the modeled arrival times and the measured arrival times. This Sum is calculated using the obtained estimates of the microseismic source coordinates and P-wave velocity. The effectiveness of the PSO algorithm was verified through inversion of a theoretical model and two analyses of actual data from mine blasts in different locations. Compared with the classic least squares method, the PSO algorithm displays faster convergence and higher accuracy of microseismic source positioning. Moreover, there is no need to measure the microseismic wave velocity in advance: the PSO algorithm eliminates the adverse effects caused by error in the P-wave velocity when locating a microseismic source using traditional methods.

### 1. Introduction

Microseismic monitoring technology can be used for effective locating rock ruptures caused by rock burst, coal and gas outburst, water inrush, and other coalmine disasters. In recent years it was also used in early warning systems (Li et al., 2016; Past 25 et al., 2015; Jia et al., 2015). The spatial coordinates of monitoring stations and the arrival times of the first seismic wave are used to determine the coordinates of the microseismic source, origin time, and other attributes. The accuracy of microseismic source location has been an important research topic in microseismic monitoring technology for a long time.

Current microseismic source location methods mostly come from earth quake seismology. Now they are widely used in microseismic monitoring (Sun et al., 2016; Xue et al., 2015; Anikiev et al., 2014; Dong and Li, 2013). The earthquake source location method, based on time-difference principles was proposed (Geiger, 1912). Based on this work, Lienert et al. 30






developed an improved algorithm called HYPOCENTER (Lienert et al., 1986). Since then, Nelson and Vidale presented the  
QUAKE3D method for 3-D velocity modeling (Nelson and Vidale, 1990). Lomax et al. worked out a nonlinear mode for  
locating global earthquakes in 3-D media and developed NonLinLoc software (Lomax et al., 2000; Lomax et al., 2011 ).  
Waldhauser and Ellsworth presented earthquake location algorithm based on a double ~~time~~ differences and developed  
5 HypoDD software (Waldhauser and Ellsworth, 2000). After occurrence of characteristics of the coal mine overburden layers  
and abscission zones, Gong et al. proposed a microseismic detecting algorithm for isotropic velocity model along mine  
length; the algorithm decreases source location errors(Gong et al., 2012). Dong et al. proposed mathematical algorithms of  
microseismic source location where there is no need to predict velocity in advance (Dong et al., 2011). The algorithms  
overcome location errors caused by errors of velocity measurement inherent in traditional location methods. Lin et al.  
10 analyzed the characteristics of linear location method and Geiger method and proposed a joint method to address the  
problem of low precision in estimation of source coordinates inherent in linear location method (Lin et al., 2010). Chen et al.  
proposed stratified methods for microseismic source location based on particle swarm optimization to obtain correlations  
among the source position, origin time, and microseismic propagation speed for a non-unique solution (Chen et al., 2009).

In conclusion we note that the microseismic source location accuracy is influenced by many factors such as the location  
15 method, the layout of the microseismic network, the velocity model, and the accuracy of the arrival time measurement (Dong  
and Li, 2013). Among these, the key factor influencing the stability of the location algorithm and the location accuracy is  
precision of the velocity model (Prange et al., 2015; Li et al., 2014; Usher et al., 2013).In this paper, an adaptive particle  
swarm optimization algorithm is proposed for microseismic source location which is based on average flying velocity of the  
particles. It uses as the PSO target function the ~~known in the mathematical statistic~~ "least square sum" of measured arrival  
20 time differences for all pairs of seismic sensors and uses the PSO algorithm to identify the source coordinates and  
microseismic wave velocity. Then, the origin time of the microseismic event is calculated according to the just determined  
source location and the wave velocity. Parameters of the PSO algorithm such as the inertia weight, the acceleration constants  
and the flight velocities of particles are adaptively adjusted to avoid the algorithm failure caused by the improper selection of  
these parameters. Careful dynamic adjusting PSO parameters improves the robustness of the PSO algorithm, reduces number  
25 of iteration and improves estimation of the microseismic source coordinates and the seismic wave velocity.

## 2. Microseismic source location principle

Suppose, that there are  $n$  geophones in the microseismic monitoring system. Assign the microseismic source location point  
as  $r_0 = (x_0, y_0, z_0)$ , the coordinates of each geophone as  $r_i = (x_i, y_i, z_i), (i = 1, \dots, n)$  the  equivalent propagation velocity of  
the P-wave in the medium as  $V$ , the time of the source P-wave arrival to  $i$ -th geophone of the microseismic monitoring  
30 system as  $t_i$ , and the origin time of the microseismic event as  $t_0$ . Then, the theoretical (regression) arrival time differences for  $i$





and  $j$  geophones are

$$t_i - t_j = \frac{l_i - l_j}{V}, i, j = (1, \dots, n), \quad (1)$$

where

$$\begin{cases} l_i = \sqrt{(x_i - x_0)^2 + (y_i - y_0)^2 + (z_i - z_0)^2} \\ l_j = \sqrt{(x_j - x_0)^2 + (y_j - y_0)^2 + (z_j - z_0)^2} \end{cases}$$

- 5 The differences  $\Delta t_{i,j}(r_0)$  between the regression arrival times and the measured arrival times  $\Delta \hat{t}_{i,j}$  and sum of their squares reflect the degree of discrepancies between regression and observed arrival times. The equation for estimation of the microseismic source position has the form:

$$Q(r_0, V) = \sum_{i,j=1}^n \left( \Delta \hat{t}_{i,j} - \frac{l_i(r_0) - l_j(r_0)}{V} \right)^2 = \min_{r_0, V}. \quad (2)$$

- 10 The estimates of microseismic source coordinates  $\hat{r}_0 = (\hat{x}_0, \hat{y}_0, \hat{z}_0)$  and equivalent P-wave velocity in the medium  $\hat{V}$  correspond to those values of  $r_0 = (x_0, y_0, z_0)$  and  $V$  in equation (1), (2) for which the function  $Q(r_0, V)$  reaches a global minimum in the ranges of possible values of the microseismic source coordinates and medium equivalent velocity.

According to time difference location principles, the equation for calculation of the source origin time  $t_0$  has the following form

$$\min_{t_0} F(t_0) = \min_{t_0} \sum_{i=1}^n \left( \hat{t}_i - t_0 - \frac{l_i(\hat{r}_0)}{\hat{V}} \right)^2 \quad (3)$$

- 15 For a case where signal-to-noise ratios in observed signals from microseismic source are sufficiently high and earth medium between the source and geophones is homogeneous  $\min_{t_0} F(t_0) \approx 0$  and estimate of the microseism origin time can be calculated as:

$$\hat{t}_0 \approx \frac{1}{n} \sum_{i=1}^n \left( \hat{t}_i - \frac{l_i(\hat{r}_0)}{\hat{V}} \right). \quad (4)$$

- 20 In solving for the seismic source location and origin time, the estimates of source coordinates  $\hat{r}_0 = (\hat{x}_0, \hat{y}_0, \hat{z}_0)$  and the equivalent wave velocity  $\hat{V}$  are obtained first according to equation (2). Then, the estimate of the origin time  $\hat{t}_0$  is determined by substituting the estimated values  $\hat{r}_0$  and  $\hat{V}$  into equation (3) (or in equation (4) for the case where  $\min_{t_0} F(t_0) \approx 0$ ). Because equation (2) is a nonnegative function of  $(x_0, y_0, z_0)$  and  $V$ , a minimum  $\min_{r_0, V} Q(r_0, V)$  always exists and can be found by the nonlinear fitting methods. The classic method is the "minimum least square solution". However, in



this solution the source location estimate  $\hat{r}_0$  correlates with the origin time estimate  $\hat{t}_0$ , and the algorithm has a slow convergence for the velocity  $V$ . It is easy also to get a non-unique solution (Chen et al., 2009). To overcome these problems, this paper introduces an adaptive PSO algorithm to optimize the solution process.

Source location based on time difference principle is a multi-extremum non-linear problem. The most popular method is the classical method proposed by Geiger in 1912 and various improvements thereafter (Geiger, 1912). This kind of method is a solution method in the linear category. That is to say, according to Taylor's formula, the non-linear problem is transformed into a linear problem, and then different strategies are adopted to solve the linear equation system. In many cases, such as second order or more will appear. Problems such as inappropriate omitting of terms, unreasonable selection of initial values, trapping solutions into local minima, etc (Lee and Stewart, 1981). The Particle Swarm Optimization (PSO) method is simple to operate, easy to use, and easy to get the global optimal solution for multi-extremum non-linear problems. Therefore, the improved PSO method is introduced to solve the above problems.

### 3. Adaptive PSO algorithm for solving location parameters

#### 3.1 PSO principle

The PSO is an evolutionary computation technique developed by Eberhart and Kennedy in 1995 year (Eberhart and Kennedy, 1995). It is an evolutionary algorithm similar to a simulated annealing optimization algorithm for a problem of iterative improving a candidate for the solution with regard to a given measure of quality. PSO is an intelligent computational algorithm for analyzing the dynamic behavior of a swarm of particles. In comparison with other similar algorithms PSO has such advantages as simple implementation, high accuracy and fast convergence. It has been successfully applied in the field of optimization in recent years (Fong et al. , 2016; Renaudineau et al., 2015; Sudheer et al., 2014). The basic PSO principles are as follows: PSO randomly initializes a set of particles in the solution space. Each particle flies through the solution space with a certain speed by following the current optimum particle and the optimal solution is found through the search in successive generations. In each generation, the particles update themselves by tracking two types of extreme values: local optimums and global optimum. First extreme values are the optimal values for every particle itself in a set of positions of this particle in the sequence of already existing generations. They are denoted as  $pBest$ . Second optimum is the optimal value found in the all existing generations of the whole swarm of particles. It is denoted as  $gBest$ . After the two sorts of the optimal values are found, the particles update their speed and positions according to equation (5):

$$\begin{cases} v_{i,d}^{(k+1)} = w^{(k)} v_{i,d}^{(k)} + c_1^{(k)} r_1 (p_{i,d}^{(k)} - x_{i,d}^{(k)}) + c_2^{(k)} r_2 (p_{g,d}^{(k)} - x_{i,d}^{(k)}) \\ x_{i,d}^{(k+1)} = x_{i,d}^{(k)} + v_{i,d}^{(k+1)}, i = (1, \dots, n), d = (1, \dots, m) \end{cases}, \quad (5)$$

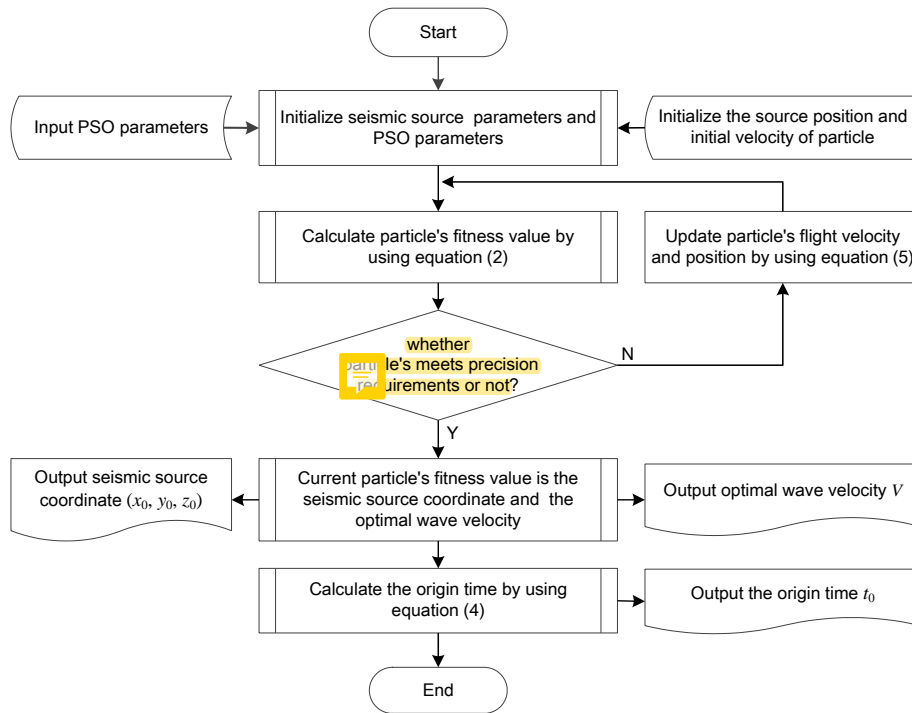
where  $m$  is a number of particles in the swarm;  $n$  is the dimension of the particle space;  $k$  is a number of the current evolutionary particle generation;  $r_1$  and  $r_2$  are independent random values within  $[0, 1]$ ;  $w^{(k)}$  is the inertia weight at the  $k$ -th



particle generation;  $c_1^{(k)}$  and  $c_2^{(k)}$  are acceleration constants at the  $k$ -th particle generation;  $v_{i,d}^{(k)}$  is the current flight speed for  $d$ -th component of  $i$ -th particle at the  $k$ -th generation;  $x_{i,d}^{(k)}$  is the  $d$ -th component of  $i$ -th particle current location at the  $k$ -th generation;  $p_{i,d}^{(k)}$  is the  $d$ -th coordinate of current optimal value for  $i$ -th particle itself at the  $k$ -th generation;  $p_{g,d}^{(k)}$  is the  $d$ -th component of current optimal value for total particle population up to the  $k$ -th generation.

### 5 3.2 The algorithm for solving source location parameters

The equation (2) concerns a multi-extremum nonlinear optimization problem. The PSO algorithm was developed for solving such problems and can be applied to search for the optimal value in four-dimensional solution space composed of  $(x, y, z, v)$ , that is, to solve for the source location and the equivalent seismic velocity. The flowchart for the PSO algorithm is shown in Fig. 1.



10

Fig.1 Flowchart for the microseismic source location algorithm based on adaptive particle swarm optimization

The procedure for the source location parameter evaluation based on the PSO algorithm is described as follows:

Step1: Initialize the model parameters for microseismic source location and the PSO parameters. Randomly initialize the source position and velocity of PSO algorithm. Initialization of the PSO parameters mainly includes the population size  $m$ , acceleration constants  $c_1$  and  $c_2$ , inertia weight  $w$ , calculation accuracy  $\epsilon$ , largest number of evolutionary generation  $T_{max}$ , initial velocity and positions of the particles, and maximum particles flight speed  $v_{max}$ . Then,

15



initialize the iterative counter  $k$ .

Step2: Calculate particle's (microseismic source coordinate and velocity model) fitness value by using equation (2). The calculated values here are the source's 3-dimensional coordinates  $(x_0^{(k)}, y_0^{(k)}, z_0^{(k)})$  and equivalent velocity  $V^{(k)}$ , where  $k$  is the evolutionary generation number.

5 Step3: Judge whether the Current parameters of the particles meets the presupposed flight times and positioning accuracy or not. If it does, then go to Step 5; otherwise, go to Step 4.

Step4: Update the flight velocity and particle positions according to equation (5), and then, go back to Step 2.

Step5: Output the estimated source's 3-dimensional coordinates  $(\hat{x}_0, \hat{y}_0, \hat{z}_0)$  and equivalent wave velocity  $\hat{V}$ .

Step6: Calculate and output the origin time estimate  $\hat{t}_0$  by substituting estimated values of the source coordinates  
10  $(\hat{x}_0, \hat{y}_0, \hat{z}_0)$  and equivalent velocity  $\hat{V}$  into equation (4). When the solution for the source coordinates and the origin time are obtained, the algorithm is over.

### 3.3 Discussion of PSO algorithm parameters

The parameter values for the PSO algorithm are the keys to influence the algorithm performance and efficiency. This paper proposes guiding principles for adjusting parameters of the PSO algorithm based on the practical approach to solving for the  
15 seismic source parameters.

(1) Inertia weight  $w^{(k)}$ :

For an optimization problem, if a decision is better than any decision to solve the problem, it can be called the global optimization; Different from the global optimization, the local optimization is not the best in all decisions, but the decision is better than partial decision to solve the problem. As early as 1998, Shi et al., found that when the value of inertia weight  $w$  is  
20 relatively large, the global optimization ability of the PSO algorithm is strong, while the local optimization ability is weak (Shi and Eberhart, 1998). On the other hand, when the value of inertia weight  $w$  is relatively small, the local optimization ability of the PSO algorithm is strong, while the global optimization ability is weak. To avoid particles being stuck in a local optimum untimely or missing the global optimal solution, this study uses the strategy of self-adaptive inertia weight to determine the proper value of  $w$  (Zhang and Liao, 2009). The strategy is the following:

25 In order to enhance the exploring competence of the PSO algorithm, the population average velocity should be maintained rather high at the initial stages of evolution, while in the late stage of evolution a smaller population average velocity should be maintained in order to strengthen the development capabilities of the algorithm. We assume that evolution of the average particle flying velocity with changing number of generations  $k$  should be close to function defined by the formula



$$v_{avg}^{(k)} = v_e^{(k)} = v_0 e^{\left(\frac{2k}{T_{max}-T_1}\right)^2} \quad (6)$$

where  $v_0$  represents the initial average rate population evolutionary velocity;  $T_{max}$  is the largest number of evolutionary generations;  $T_1$  is the initial number of evolved generations.

We will call  $v_e^{(k)}$  as expected value of the average flying velocity for a particle population at  $k$ -th generation. The actual average velocity of the particle swarm at  $k$ -th generation is given by the formula:

$$v_{avg}^{(k)} = \frac{1}{m} \sum_{i=1}^m \sqrt{\sum_{d=1}^4 (v_{i,d}^{(k)})^2} \quad (7)$$

Where  $v_{i,d}^{(k)}$  represents the velocity of  $d$ -th component of the  $i$ -th particle at  $k$ -th generation.

Assign the initial inertia weight as  $w$ . Designate  $w^{(k)}$  inertia weight for the  $k$ -th particle generation. Then the inertia weight  $w^{(k+1)}$  for  $(k+1)$ -th generation is determined by formula:

$$10 \quad \begin{cases} \text{if } v_{avg}^{(k)} > v_e^{(k)} & \text{then } w(k+1) = w(k) / p, \\ \text{if } v_{avg}^{(k)} < v_e^{(k)} & \text{then } w(k+1) = w(k) \cdot p, \\ \text{if } v_{avg}^{(k)} = v_e^{(k)} & \text{then } w(k+1) = w(k), \\ \text{if } w(k+1) > w_{max} & \text{then } w(k+1) = w_{max}, \\ \text{if } w(k+1) < w_{min} & \text{then } w(k+1) = w_{min}, \end{cases} \quad (8)$$

where  $p$  is a some constant. Practice has proved that the best value of  $p$  is 1.05 (Zhang and Liao, 2009).

Substitution of  $w^{(k)}$  given by equation (8) into equation (5) ensures that average velocity  $v_{avg}^{(k)}$  will reduce to zero in the process of population evolution.

(2) Acceleration constants  $c_1^{(k)}$  and  $c_2^{(k)}$ :

15 Gao and Liao noted that the position  $x_{i,d}^{(k)}$  of each particle in the population eventually converges to  $(c_1 p_{1,d} + c_2 p_{2,d}) / (c_1 + c_2)$  (Gao and Liao, 2012), This means that the position of the particles for large  $k$  will stay close to the lines that connect the global optimum point with the local optimum point. So, the optimal value of the particle themselves are very important at the first phase of particle swarm optimization to make all the particles converge to the global optimum.

20 However, if  $c_1^{(k)}$  would be high for all  $k$  then the optimum position of the particle swarm would, generally, not coincide with the global optimum of the target function (2). Therefore, at the first stage of PSO,  $c_1^{(k)}$  should take a larger value, while  $c_2^{(k)}$  should take a smaller value to promote the local optimization speed. When particle swarm optimization is near to its end, the role of the global optimal value should be highlighted. At this stage,  $c_1^{(k)}$  should take a smaller value, while  $c_2^{(k)}$  should take a larger value to help the particle swarm converge to the global optimum. Therefore, the acceleration



constants  $c_1^{(k)}$  and  $c_2^{(k)}$  should be designed based on the average velocity of the particle swarm:

$$c_1^{(k)} = C \frac{v_{avg}^{(k)}}{v_{max}}, c_2^{(k)} = C \left( 1 - \frac{v_{avg}^{(k)}}{v_{max}} \right). \quad (9)$$

(3) The maximum flight velocity of particles  $v_{max}$ :

The selection and analysis of the maximum flight velocity of particles should proceed as follows: if  $v_{max}$  is too small, then the particle movement will be restricted. In this situation, the algorithm cannot converge fast enough and may not even be able to achieve the optimal solution. On the other hand, if  $v_{max}$  is too large, then the optimal solution may be missed (Eslami et al., 2014; Abido 2002). Therefore, it is very important to dynamically adjust the  $v_{max}$  value. In this study, the  $v_{max}$  value is obtained as follows:

$$v_{max,d} = \frac{x_{max,d} - x_{min,d}}{N} \quad (10)$$

Where  $x_{max,d}$  and  $x_{min,d}$  respectively, stand for the largest and smallest values in the  $d$ -th dimension of the possible particle positions, and  $N$  is the number of intervals on each dimension.

#### 4. Simulation and case study

##### 4.1. Simulation analysis and discussion

For the simulation, eight sensors comprising a microseismic localization system are located on the eight vertices of a cube. Four microseismic sources, O, P, Q, R, etc., are located inside the cube, and S is located outside the cube. The coordinates of the geophones and the microseismic sources are shown in Table 1, and the relative locations of the geophones and microseismic sources are shown in Fig. 2.

**Table 1 Coordinates of sensors and microseismic sources**

Geophone coordinates/m	Microseismic source coordinates/m
A(0,0,0)	O(400,400,400)
B(800,0,0)	P(300,600,700)
C(800,800,0)	Q(300,200,300)
D(0,800,0)	R(500,600,1200)
E(0,0,800)	
F(800,0,800)	
G(800,800,800)	
H(0,800,800)	

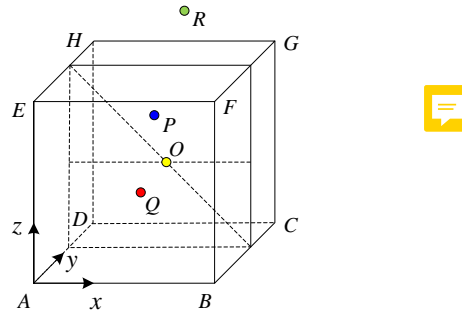


Fig.2 The locations of geophones and microseismic sources

The principle of microseismic location simulation: Firstly, the travel time and monitoring arrival time of microseismic theory are calculated by formula (1) according to the position of sensors, source location and wave velocity; then, the location of microseismic source, the time of occurrence and the velocity model of microseismic wave propagating in medium are determined by formula (3) and formula (4) as true values.

It is assumed that the velocity of wave propagation ( $v$ ) in the medium is unknown. According to the coordinates of geophones and microseismic sources shown in Table 1, the travel time  $t$  and origin time  $t_0$  can be calculated. Then,  $t$  and  $t_0$  are substituted into equations (2), (3) and (4), and values are obtained by inversion using the least squares method (Dong et al., 2011) and the PSO proposed in this paper. The microseismic source location, equivalent wave velocity, and origin time are obtained. Then, the results calculated using the two different methods are compared using error analysis, the algorithm execution time, and the number of iterations.

Suppose a microseismic velocity  $v=5.60\text{m/ms}$ , and suppose the microseismic source's origin time is 08:00:00.000 on a certain day. According to the coordinate information in Table 1, the trigger time of the microseismic waves recorded by the geophones triggered can be calculated, as shown in Table 2. Take the method of Geiger source location using the least squares method as the LSM algorithm, and the method in this paper is the PSO algorithm. The computational accuracy of the LSM algorithm is  $\varepsilon=1.0\times 10^{-10}$ . The parameters for the PSO algorithm are as follows: population size  $m=50$ ,  $w_0=1$  and  $T_{max}=3000$ . The inertia weight  $w$ , acceleration constants  $c_1$  and  $c_2$  and particles' maximum flight velocity  $v_{avg}$  are determined by equations (6), (9) and (10). MATLAB programming was used to implement the LSM and PSO algorithms to obtain solutions at four points O, P, Q and R. The calculated results are shown in Table 3.

Table 2 Travel time of a microseismic wave

Geophones	Travel time/ms			
	O	P	Q	R
A	123.72	173.13	83.76	255.68
B	123.72	187.29	110.08	245.50
C	123.72	157.71	149.40	223.75
D	123.72	140.61	131.22	234.87



E	123.72	121.11	110.08	156.70
F	123.72	140.61	131.22	139.47
G	123.72	97.81	165.60	96.16
H	123.72	66.82	149.40	119.79

**Table 3 Comparison of the LSM and PSO algorithms**

Algorithm		Microseismic source O				
		<i>x/m</i>	<i>y/m</i>	<i>z/m</i>	<i>t<sub>0</sub>/ms</i>	<i>v/m/ms</i>
LSM	Initial value	350.00	350.00	350.00	0.00	1.00
	Calculated value	400.00	400.00	400.00	-	-
PSO	Initial value	0~800	0~800	0~800		0~10
	Calculated value	400.00	400.00	400.00	-	-
True value		400.00	400.00	400.00	0.00	5.60
Algorithm		Microseismic source P				
		<i>x/m</i>	<i>y/m</i>	<i>z/m</i>	<i>t<sub>0</sub>/ms</i>	<i>v/m/ms</i>
LSM	Initial value	100.00	400.00	500.00	0.00	1.00
	Calculated value	304.37	295.22	703.63	6.27	5.85
PSO	Initial value	0~800	0~800	0~800		0~10
	Calculated value	301.23	298.95	701.02	1.81	5.67
True value		300.00	300.00	700.00	0.00	5.60
Algorithm		Microseismic source Q				
		<i>x/m</i>	<i>y/m</i>	<i>z/m</i>	<i>t<sub>0</sub>/ms</i>	<i>v/m/ms</i>
LSM	Initial value	100.00	100.00	100.00	0.00	1.00
	Calculated value	263.98	206.33	304.59	2.92	5.81
PSO	Initial value	0~800	0~800	0~800		0~10
	Calculated value	258.84	201.35	298.01	1.11	5.68
True value		260.00	200.00	300.00	0.00	5.60
Algorithm		Microseismic source R				
		<i>x/m</i>	<i>y/m</i>	<i>z/m</i>	<i>t<sub>0</sub>/ms</i>	<i>v/m/ms</i>
LSM	Initial value	300.00	400.00	1000.00	0.00	1.00
	Calculated value	491.28	590.68	1208.32	13.82	5.92
PSO	Initial value	0~800	0~800	0~800		0~10
	Calculated value	504.21	605.23	1195.25	4.48	5.70
True value		500.00	600.00	1200.00	0.00	5.60

Notes: “-” means that the value cannot be obtained directly; the calculated value from the PSO is the average value obtained after running the PSO algorithm twenty times.

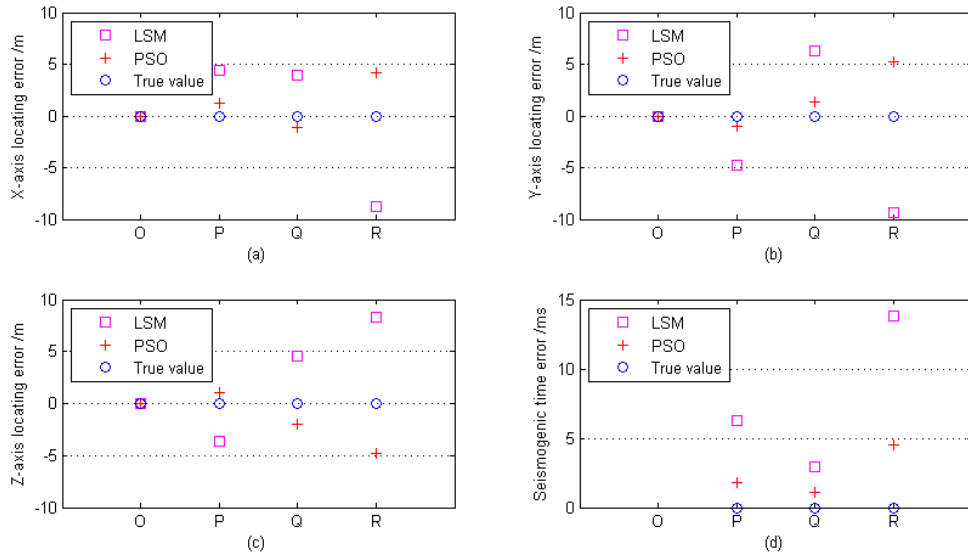
- 5 Based on the results shown in Table 3, the LSM algorithm has different convergent results for different initial values. When the initial value is far from the true value, the required calculation accuracy  $\varepsilon$  can be met, but the result does not approach the true value. In some cases, there are multi-group results, so the initial values need to be repeatedly adjusted in order to make the LSM algorithm approach the true value. For the PSO algorithm, a wide range of initial values was used for the microseismic source location parameters. The only variables that need to be solved for are the 3-dimensional coordinates
- 10 of the arbitrary point inside the space surrounded by the seismic detection equipment. Thus, the calculated results can better



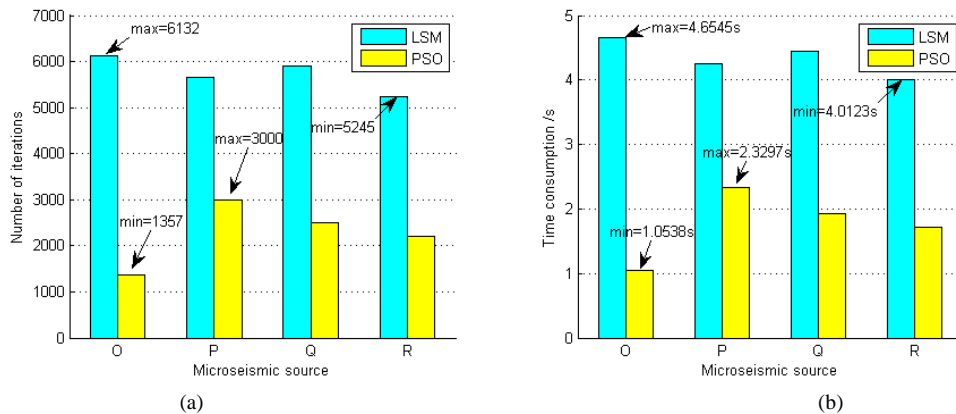


approach the true value, and the solution is unique. This occurs because by improving the parameter selection rules, the condition that particles are trapped in local optima or fly over the global optimum during the process of searching is avoided; thus, the optimization ability of the PSO algorithm is improved.

Comparisons of the errors in the microseismic source location parameters obtained using the LSM and PSO algorithms are shown in Fig.3, and the comparison of iterations between the two algorithms is shown in Fig.4.



**Fig.3** Comparisons of the errors in the source location parameters between the LSM and PSO algorithms: (a)Comparisons of the x-axis locating error;(b)Comparisons of the y-axis locating error;(c)Comparisons of the z-axis locating error;(d) Comparisons of the seismogenic time error.



**Fig.4** (a) Comparison of the number of iterations between the LSM and PSO algorithms, where the max and min markers are highlighting the max and min number of iterations for each algorithm;(b) Comparison of the computing time between the LSM and PSO algorithms, where the max and min markers are highlighting the max and min amount of computing time for each algorithm.

The selection of initial values for parameters in the LSM algorithm is comparatively complex, so the basic principle of parameter selection is to approach the desired value as near as possible. The selection of different initial values for



parameters in the LSM algorithm has a greater influence on the accuracy of the solution location compared to PSO and results in a large difference in the number of iterations between the two methods. The improved PSO algorithm only needs to be provided a value range for the initial parameters. Then, it automatically selects parameter values to iterate, and the algorithm runs for a maximum number of 3000 iterations. As is shown in Table 3, Fig.3, and Fig.4, compared with the LSM algorithm, the PSO algorithm not only improves the computational accuracy of the desired value of microseismic source parameters but also greatly increases the computational efficiency and determines the microseismic source's real-time location.

The following is a discussion of some special conditions. 1) Since source O is located at the cube's center of gravity, the distance between O and each geophone is the same. As a result, both the LSM and PSO algorithms can converge to the true value when solving for the seismic source coordinates  $(x_0, y_0, z_0)$  but cannot solve the origin time  $t_0$  because regardless of which value of wave velocity  $v$  is selected, the value of  $Q$  in equation (2) tends to be zero. Because of the randomness of the wave velocity, the origin time  $t_0$  cannot be solved according to equation (3), so when positioning the geophones, the same distance between the microseismic source and each geophone should be avoided. 2) Since source R is located outside the cube, the average distance between R and each geophone is greater than the average distance from R to other points (such as P and Q). The error in the equivalent wave velocity, which is solved by iteration, causes greater location error for R than for other points in the cube, so the layout of the seismic detection equipment should ensure that the microseismic source is within the detection array.

#### 4.2 Case study

Because rock burst occurs frequently at a mine in central China, a Paladin 24-bit, multi-channel microseismic monitoring system of the ESG Company in Canada was installed. In total, 18 seismic detection devices are installed in different positions at the mine, 9 seismic detection devices are installed at the -520 level and 9 at the -840 level. A blasting operation with known position was conducted in order to verify the validity of the PSO algorithm. Ten seismic detection devices detected microseismic signals during the blasting operation. Pre-treatments of the data, such as denoising and filtering, were performed on the detected signals in order to obtain a high SNR. Then, two blast points that showed an obvious rising waveform trend, making it easy to capture the trigger time, were selected and analyzed. The position coordinates of the two points are A(1495.60, 998.50, -685.10) and B(1298.70, 855.30, -576.20). The coordinates of the 10 seismic detection devices and the trigger times detected are shown in Table 4. The relative position of the 10 geophones and the 2 burst points is shown in Fig. 5.

**Table 4 Geophone coordinates and travel time from the burst point**

Geophone No.	Geophone Coordinates /m			Travel time/ms	
	x	y	z	Burst point A	Burst point



	B				
2#	751.26	549.55	-520.51	157.39	112.01
3#	755.40	1302.64	-523.35	146.02	146.02
4#	1752.37	700.70	-519.43	76.08	86.03
6#	2005.65	1298.72	-521.35	109.69	149.34
9#	1512.59	1149.63	-519.15	39.98	65.41
12#	995.87	1305.66	-820.20	107.27	106.07
13#	1248.20	1597.85	-821.95	118.96	140.72
15#	1500.46	550.75	-819.87	82.76	77.72
16#	2254.38	1303.22	-818.35	146.92	192.00
17#	1750.34	998.48	-822.73	52.20	96.23

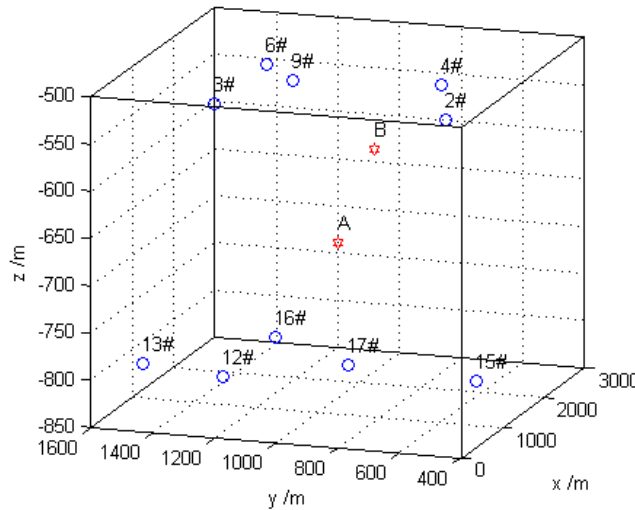


Fig. 5 Schematic diagram of the relative position of the 10 geophones and the 2 burst points

Based on the data presented in Table 4, the PSO algorithm and LSM algorithm were used to solve for the seismic source location parameters and origin time. A comparison of the error is shown in Table 5. In Table 5, the average error is the average number of burst point A and B.

Table 5 Error comparison for the LSM algorithm and PSO algorithm

		$X_{err}/m$	$Y_{err}/m$	$Z_{err}/m$	$T_{err}/ms$
Burst point A	LSM	9.65	10.39	13.05	18.63
	PSO	6.78	5.27	9.79	10.33
Burst point B	LSM	8.28	11.22	12.74	27.24
	PSO	5.96	6.29	8.26	15.95
Average error	LSM	8.97	10.81	12.90	22.94
	PSO	6.37	5.78	9.03	13.14

According to Table 5, the accuracy of the LSM algorithm is relatively poor. Its average deviation in the X, Y and Z directions are 8.97m, 10.81m and 12.90m. The results were obtained after repeated adjustment of the initial location



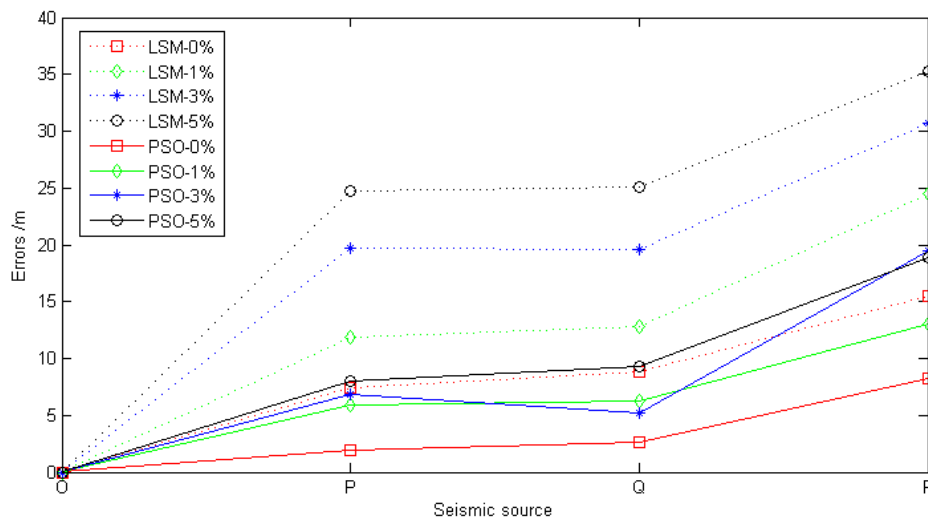
parameters for the seismic source and the wave velocity. The PSO algorithm can automatically approach the true values according to the given initial parameter range. Its average deviation in the X, Y and Z directions are 6.37m, 5.78m and 9.03m, with errors that are less than 5%. Therefore, the PSO can achieve high positioning accuracy in the geophone array range.

5 The simulation example and blasting experiment discussed above clearly demonstrate that the PSO optimization algorithm is better than LSM when solving for the microseismic positioning parameters and the seismic origin time. The algorithm has high positioning accuracy and fast convergence speed, and it is easy to set the initial parameters. This is because the adaptive PSO algorithm is more accurate in fitting the relationship between each coordinate for the seismic detection equipment and the time difference. It can dynamically adjust the velocity value in an iterative process until the  
 10 value approximates the optimal average velocity, which can account for the nonlinear relationship between each coordinate of the seismic detection equipment and the time difference and can greatly reduce the impact of the velocity error on the positioning precision.

### 4.3 Discussion



In order to further verify the effectiveness of the proposed method, the experiments in Section 4.1 are compared and analyzed under different wave velocities. The idea of comparative analysis is as follows: Because it is difficult to measure real wave velocities in practical engineering, assuming that there are several small errors of 1%, 3%, 5%, that is, when the wave velocities are 5.544, 5.432 and 5.320 m/ms. two methods are used to locate the microseismic source. The locating results under different conditions are analyzed, and the errors of each coordinate and absolute distance are calculated. The absolute distance errors of the traditional method and the new method are plotted in Fig.6.



20

Fig. 6 Comparison of locating errors between PSO and LSM method



As we can be seen from Fig. 6, the LSM method will cause large errors in the location system under the disturbance of different wave velocities. The maximum error is up to 25 m (Except for the seismic source R), while the PSO method is more stable. The reason is that the PSO method can accurately fit the relationship between the coordinates of each sensor and the time difference, because it does not depend on the velocity value when solving the seismic location parameters. The LSM method needs accurate velocity to solve the seismic location parameters, and the disturbance of velocity has a great influence on the results. That is to say, in the case of wave velocity disturbance, even if there is a small error in the value of wave velocity, there will be a large error in the location result of LSM method. Because of the complexity of rock media, the average velocity of each region is not necessarily the same, and the influence of construction technology, it is very difficult to determine the velocity of anisotropic media, which is the main reason for the low positioning accuracy of LSM method. In addition, when the source is outside the sensor array (Such as seismic source R), the errors of the two methods are very large, but the LSM method has greater locating errors than PSO method, which shows that the sensor arrangement should ensure that the seismic source is within the array as far as possible.

## 5. Conclusions

- (1) An adaptive PSO optimization method is proposed based on the average population velocity in order to solve for location parameters of the seismic source in a location model. This method takes the minimum residual sum of squares between the time difference regression values and the time difference measured values for two seismic detection devices, and the PSO algorithm is designed to solve for the seismic source coordinates and the equivalent wave velocity and then solve for the seismic source origin time.
- (2) Combined with the actual need to solve for seismic source parameters, the model constraints of inertia weight, accelerating constants, the maximum flight velocity of particles, and other parameters are discussed in order to improve the optimization capacity of the PSO algorithm and avoid being trapped in a local optimum.
- (3) Comparative analysis shows that when solving for the seismic source location parameters, compared with the classic least squares method, the adaptive PSO algorithm has high positioning accuracy and fast convergence, and it is easy to set the initial parameter values.

## 25 Acknowledgments

This work was funded by the Key Research and Development Program of Shandong Province (2017GSF20115, 2018GGX109013), the Natural Science Foundation of Shandong Province (ZR2018MEE008) and the Project of Shandong Province High Educational Science and Technology Program (J18KA307).



## References



- Abido M. A. Optimal power flow using particle swarm optimization. *Int. J. Electr. Power Energy Syst.*, 24(7), 563-571, 2002.
- Anikiev D., Valenta J., Staněk F., et al. Joint location and source mechanism inversion of microseismic events: benchmarking on seismicity induced by hydraulic fracturing. *Geophys. J. Int.*, 198(1), 249-258, 2014.
- 5 Chen B., Feng X., Li S. et al. Microseism source location with hierarchical strategy based on particle swarm optimization. *Chin. J. Rock Mech. Eng.*, 28(4), 740-749, 2009.
- Dong L., Li X. A microseismic/acoustic emission source location method using arrival times of ps waves for unknown velocity system. *Int. J. Distrib. Sens. Netw.*, 2013(3), 485-503, 2013.
- 10 Dong L. J., Li X. B., Tang L. Z., et al. Mathematical functions and parameters for microseismic source location without pre-measuring speed. *Chin. J. Rock Mech. Eng.*, 30(10), 2057-2067, 2011.
- Eberhart R C, Kennedy J. A new optimizer using particle swarm theory. *Proceedings of the Sixth International Symposium on Micro Machine and Human Science*, Nagora, Japan, 39-43, 1995.
- Eslami M., Shareef H., Taha M. R., et al. Adaptive particle swarm optimization for simultaneous design of upfc damping controllers. *Int. J. Electr. Power Energy Syst.*, 57(5), 116-128, 2014.
- 15 Fong S., Wong R., Vasilakos A. Accelerated pso swarm search feature selection for data stream mining big data. *IEEE Trans. Serv. Comput.*, 9(1), 33-45, 2016.
- Gao Z., Liao X. Z. Hybrid adaptive particle swarm optimization based on average velocity. *Control Decis.*, 27(1), 376-381, 2012.
- 20 Geiger L. Probability method for the determination of earthquake epicenters from arrival time only. *Bull. St. Louis. Univ.*, 8, 60-71, 1912.
- Gong S. Y., Dou L. M., Ma X. P., et al. Study on the construction and solution technique of anisotropic velocity model in the location of coal mine tremor. *Chinese J. Geophys.-Chinese Ed.*, 55(5), 1757-1763, 2012.
- Lee W H K, Stewart S W. *Principles and applications of micro earthquake networks*. New York: Academic Press, 1981.
- 25 Jia R. S., Liu C., Sun H. M., et al. A situation assessment method for rock burst based on multi-agent information fusion. *Comput. Electr. Eng.*, 45, 22-32, 2015.
- Li N., Wang E., Ge M., et al. A nonlinear microseismic source location method based on simplex method and its residual analysis. *Arab. J. Geosci.*, 7(11), 4477-4486, 2014.
- Li X., Wang E., Li Z., Liu, Z., et al. Rock burst monitoring by integrated microseismic and electromagnetic radiation methods. *Rock Mech. Rock Eng.*, 49, 1-14, 2016.
- 30 Lienert B R, Berge E, Frazer L.N. Hypocenter: an earthquake location method using centered, scaled, and adaptively damped least squares. *Bull. Seismol. Soc. Amer.*, 6(3), 771-783, 1986.
- Lin F., Li S. L., Xue Y. L., et al. Microseismic sources location methods based on different initial values. *Chin. J. Rock Mech. Eng.*, 29(5), 996-1002, 2010.
- 35 Lomax A., J. Virieux, P. Volant and C. Berge, Probabilistic earthquake location in 3D and layered models: Introduction of a Metropolis-Gibbs method and comparison with linear locations, in *Advances in Seismic Event Location* Thurber, C.H., and N. Rabinowitz (eds.), Kluwer, Amsterdam, 101-134, 2000.
- Lomax A., A. Zollo, P. Capuano, and J. Virieux, Precise, absolute earthquake location under Somma-Vesuvius volcano using a new 3D velocity model, *Gephys. J. Int.*, 146, 313-331, 2001.
- 40 Nelson G D, Vidale J E. Earthquake locations by 3D finite difference travel times. *Bull. Seismol. Soc. Amer.*, 80(2), 395-410, 1990.
- Past ın D., Estay R., Comte D., et al. Multi fractal analysis in mining micro seismicity and its application to seismic hazard in mine. *Int. J. Rock Mech. Min. Sci.*, 78, 74-78, 2015.
- Prange M. D., Bose S., Kodio O., et al. An information-theoretic approach to microseismic source location. *Geophys. J. Int.*, 201(1), 193-206, 2015.
- 45 Renaudineau H., Donatantonio F., Fontchastagner J., et al. A pso-based global mppt technique for distributed PV power



- generation. *IEEE Trans. Ind. Electron.*, 62(2), 1047-1058, 2015.
- Shi Y., Eberhart R. C. Parameter selection in particle swarm optimization. *Evolutionary Programming VII*. Springer Berlin Heidelberg, 1998.
- Sudheer C., Maheswaran R., Panigrahi B. K., et al. A hybrid svm-pso model for forecasting monthly stream flow. *Neural Comput. Appl.*, 24(6), 1381-1389, 2014.
- 5 Sun H. M., Jia R. S., Du Q. Q., et al. Cross-correlation analysis and time delay estimation of a homologous micro-seismic signal based on the Hilbert-Huang transform. *Comput. Geosci.*, 91, 98-104, 2016.
- Usher P. J., Angus D. A., Verdon J. P. Influence of a velocity model and source frequency on microseismic waveforms: some implications for microseismic locations. *Geophys. Prospect.*, 61, 334-345, 2013.
- 10 Waldhauser F, Ellsworth W L. A double-difference earthquake location algorithm: method and application to the northern Hayward fault, California. *Bull. Seismol. Soc. Amer.*, 90(6), 1353-1368, 2000.
- Xue Q., Wang Y., Zhan Y., et al. An efficient gpu implementation for locating micro-seismic sources using 3d elastic wave time-reversal imaging. *Comput. Geosci.*, 82, 89-97, 2015.
- Zhang D. X., Liao R. Q. Adaptive particle swarm optimization algorithm based on population velocity. *Control Decis.*, 24(8), 15 1257-1246, 2009.