

Response to the First Referee.

We thank again the comments by the First Referee. We have attempted to address them all, and detail our responses in the following.

1. **The MS largely summarizes the results from 2 recent papers by the authors using text and 8 figures from these papers. There is only 1 new section and 1 new figure for the magnetic cloud case in the whole MS. Moreover, the originality of the new results is limited by referring to a conference abstract by Muoz et al. (2016). I would suggest to the authors to omit the reference by Muoz et al. (2016), both in the text and References, and devote more text and figures for the magnetic cloud case (Section 5). For instance, they could at least explain what exactly solar wind data they analyze (are they IMF data?) and provide a new figure showing the corresponding solar wind time series. They could also discuss a bit more the details of the MC analysis and elaborate on the importance of their MC findings.**

We have omitted the reference, and have added more explanations in the magnetic cloud section. For instance, we have clarified the location of the ACE spacecraft.

The new text reads:

As a way to illustrate how the ideas described so far could be used to characterize structures in space plasmas, we apply the method to study the time series for the magnetic field during magnetic clouds (?), as found in ACE interplanetary magnetic field data (ACE Science Center, <http://www.srl.caltech.edu/ACE/ASC/index.html>), and measured in the proximity of the L1 Lagrangian point.

We have added the new Fig. 9 to show the magnetic field time series analyzed.

And we have added two paragraphs at the end of the section commenting on the results.

The new text reads:

The results above suggest that, from the point of view of the time series, the level of multifractality is large in the sheath, consistent with its more turbulent nature, intermediate in the solar wind, and that the flux rope magnetic field is essentially monofractal, consistent with the organized, smoother structure of the magnetic field expected in this region. We plan to carry out other multifractal analyses to complement these findings in a future publication.

Also, these results suggest that the fractal approach discussed in this paper may be useful to characterize the various stages of magnetic clouds, and in particular to setup a system automatically identify similar magnetic structures in spacecraft data.

2. **The author should clearly state here that by setting a threshold of -200 nT for the storm events (Figure 2) they focus on intense magnetic storms.**

We have added text to specify this.

The new text reads:

Following ?, we are interested in testing the usefulness of the method by first studying strong, clear events. Thus, we identify “storm states” and “quiet states” by locating Dst peaks, such that $Dst < -220$ nT, which corresponds to intense magnetic storms.

3. **”Similar plots for 5 years of high geomagnetic activity were obtained (Domínguez et al., 2014). In general, storm states are found to have smaller fractal dimension than quiet states immediately before and after them, although there does not seem to be a clear correlation on the value of Dst itself (Domínguez et al., 2014). Thus, our statement on the decrease of the fractal dimension is an argument on its variation, rather than on its actual value.” This result agrees with the decrease in Tsallis entropy of the Dst index time series around intense**

magnetic storms found by Balasis et al. (2008).

We thank the Referee for the additional reference, and we have include text to acknowledge it.

The new text reads:

These results are consistent with ?, where it is shown that the Tsallis entropy of the Dst time series decreases during intense magnetic storms ($Dst < -150$ nT in their case).

We also thank the Referee for all the other remarks. We have corrected all typos and provided definitions for the acronyms before their first use. Regarding some specific remarks:

1. **Page 3, line 16: please provide a link for the Dst index in the parentheses**

Page 9, lines 18-19: please provide a link for ACE data in the parentheses

We have provided the links explicity in the main text for both referenes.

2. **Page 6, line 12: please define the abbreviation "GOY"**

The new text reads:

In this work, we use the MHD shell model proposed by Gledzer, Okhitani and Yamada (GOY shell model)

3. **Equations (2) and (3): please define the meaning of the "*" symbols**

The new text reads:

*The symbol * represents a complex conjugate quantity.*

4. **Page 7, lines 16-17:** "Following the ideas in Domínguez et al. (2014), we focus on the largest peaks in the ... time series". Why? What are these ideas? Please provide more explanations here

We have changed the text to refer to the contents of the section on geomagnetic storms and make it self-consistent.

The new text reads:

Following the ideas in Sec. 3 regarding the size of events considered, we focus only on the largest peaks in the $\epsilon_b(t)$ time series

5. **Figure 9: what is the meaning of "ventana" in x-axis? please provide a proper label**

We have changed the picture. Now the x -axis says "window". We apologize for the mistake.

6. **Page 11, line 5: "variable width (Sec. ??)", please provide the correct number here**

The text refers to three types of time windows, and in the current version needed only to refer to Sec. 3. The text was changed accordingly.

The new text reads:

In the case of the Dst time series this was verified for three different types of time windows: fixed width and stationary, variable width, and moving windows (Sec. 3).

Evolution of fractality in space plasmas of interest to geomagnetic activity

Víctor Muñoz¹, Macarena Domínguez², Juan Alejandro Valdivia^{1,3}, Simon Good⁴, Giuseppina Nigro⁵, and Vincenzo Carbone⁵

¹Departamento de Física, Facultad de Ciencias, Universidad de Chile, Chile

²Departamento de Física, Facultad de Ciencias Físicas y Matemáticas, Universidad de Chile, Chile

³Centro para la Nanociencia y la Nanotecnología, CEDENNA, Chile

⁴The Blackett Laboratory, Imperial College London, UK

⁵Dipartimento di Fisica, Università della Calabria, Italy

Correspondence to: Víctor Muñoz (vmunoz@fisica.ciencias.uchile.cl)

Abstract. We studied the temporal evolution of fractality for geomagnetic activity, by calculating fractal dimensions from Dst data and from ~~an-MHD~~ a magnetohydrodynamic shell model for a turbulent magnetized plasma, which may be a useful model to study geomagnetic activity under solar wind forcing. We show that the shell model is able to reproduce the relationship between the fractal dimension and the occurrence of dissipative events, but only in a certain region of viscosity and resistivity values. We also present preliminary results of the application of these ideas to the study of the magnetic field time series in the solar wind during magnetic clouds, which suggest that it is possible, by means of the fractal dimension, to characterize the complexity of the magnetic cloud structure.

Copyright statement. TEXT

1 Introduction

10 There is a nontrivial magnetic interaction between Sun and Earth, coupled by the solar wind, ~~leads~~ leading to a rich variety of phenomena which has attracted interest to the study of space plasmas for decades, and more recently to the possibility of forecasting ~~of~~ space weather, an issue of large relevance in our increasing technology-dependent society.

15 Various models and techniques have been developed to study the plasma behavior in the Sun-Earth system. Of these, the study of complexity has been of great interest, as it is capable of providing new insights regarding universal behavior related to geomagnetic activity, turbulence in laboratory plasmas or the solar wind, to name a few (Dendy et al., 2007; Klimas et al., 2000; Takalo et al., 1999; Chang and Wu, 2008; Valdivia et al., 1988). In particular, it has been suggested that various magnetized plasma systems are in a self-organized critical state, exhibiting fractal and multifractal features which relate them to a ~~broader~~ broader class of complex systems. This has been the case in studies on the Earth's magnetosphere (Chang, 1999; Valdivia et al., 2005, 2003, 2006, 2013), the solar wind (Macek, 2010), the solar photosphere, and solar corona (Berger and Asgari-Targhi,

2009; Dimitropoulou et al., 2009). Some authors have discussed the relationship between the fractal dimension and physical processes in magnetized plasmas in the Sun-Earth system, including the possibility of forecasting geomagnetic activity (Aschwanden and Aschwanden, 2008; Uritsky et al., 2006; Georgoulis, 2012; McAteer et al., 2005, 2010; Dimitropoulou et al., 2009; Conlon et al., 2008; Chapman et al., 2008; Kiyani et al., 2007).

5 In our work we use the box-counting fractal dimension (Addison, 1997), which is as simple measure of complexity, and with an intuitive meaning. Certainly, a single fractal dimension cannot provide all information on complexity for systems in general. Moreover, most systems of interest also have multifractal features, such as the magnetospheric system (Chang, 1999), models of turbulence (Kadanoff et al., 1995; Pisarenko et al., 1993), and the solar wind (Chapman et al., 2008); but it is interesting to note that it does describe some relevant features of these time series' complexity, as it has been successfully used in previous
10 works relevant to the Sun-Earth system (Osella et al., 1997; Kozelov, 2003; Gallagher et al., 1998; Georgoulis, 2012; Lawrence et al., 1993; Cadavid et al., 1994; McAteer et al., 2005). We will thus use the box-counting as a fast approach and a first step to detect universal features worth of further study. Besides, we will calculate fractal dimensions based on a scatter diagram (see *e.g.* Witte and Witte (2009)), unlike some previous studies, where different methods or data (Kozelov, 2003; Uritsky et al., 2006; Balasis et al., 2006; Dias and Papa, 2010) were used.

15 These ideas were implemented by us in Domínguez et al. (2014) to study the *Dst* time series and solar magnetograms, and the possible correlation between solar and geomagnetic activities as evidenced by the box-counting fractal dimension. Individual events, complete years of high geomagnetic activity, and the full 23rd solar cycle were studied with this technique, successfully finding that the fractal dimension, and more specifically its evolution, has —despite its simplicity— relevant information on the complex behavior of these systems and their eventual correlation.

20 Results above were robust, in the sense that they were observed across a wide range of time scales, which suggests that any model describing the dynamics of geomagnetic activity should reproduce a similar fractal behavior. This is our motivation to study a shell model for ~~MHD~~ magnetohydrodynamic (MHD) turbulence within this framework.

Evidence of turbulence in the Earth's magnetosphere has been found by various spacecraft observations (Nykyri et al., 2006; Sundkvist et al., 2005; Zimbardo et al., 2008), and several authors have studied magnetospheric MHD turbulence (see, *e.g.*,
25 Borovsky (2004); Hwang et al. (2011); El-Alaoui et al. (2012)). However, given the large number of degrees of freedom, simulation of turbulent systems has a large computational cost, which has led to the development of analytical models which, while sharing statistical properties of the systems under study, depend only on a few degrees of freedom (Chapman et al., 1998; Valdivia et al., 2006).

At an intermediate level between these models and first principles approaches we find shell models, consisting of a set
30 of coupled equations which are similar to the spectral Navier-Stokes equation, but which are also low dimensional models. They have been successfully used to describe turbulence in magnetized fluids, being able to deal with large Reynold numbers without the associated computational cost of simulations based on first principles, nonlinear fluid equations (Ditlevsen, 2011), and describing the main statistical properties of ~~magnetohydrodynamic (MHD)~~ MHD turbulence (Chapman et al., 2008).

In fact, it has been shown that dissipative events in shell models can be taken to represent solar flares, and that their dis-
35 tribution follows the same power-law statistics as observed in turbulent magnetized plasmas (Boffetta et al., 1999; Lepreti

et al., 2004; Carbone et al., 2002). As suggested in Lepreti et al. (2004), flares and geomagnetic activity could be the results of dissipation bursts within a turbulent environment.

In a previous work (Domínguez et al., 2017), we have applied the box-counting fractal dimension to study the complexity in an MHD shell model, analyzing the correlation between it and the energy dissipation rate, showing that, for certain values of the viscosity and the magnetic diffusivity, the fractal dimension exhibits correlation with the occurrence of bursts, similar to what had been found with geomagnetic data (Domínguez et al., 2014). This suggests that shell models do not only reproduce the power-law statistics of dissipative events in turbulent plasmas, but also some features of its fractal behavior.

In this manuscript we review our results in this field, where complexity in magnetic field time series is measured by means of the fractal dimension. Thus, we characterize events such as geomagnetic storms by means of analyzing the Dst time series in various time scales (described in Secs. 2–5, and discussed previously in more details in Domínguez et al. (2014)), and the occurrence of dissipative events in an MHD shell model simulation (Sec. 4, see Domínguez et al. (2017) for more details). We also present preliminary results dealing with spacecraft data for the solar wind, related to the appearance of magnetic clouds (Muñoz et al., 2016) (Sec. 5).

2 Fractal dimension

We are interested on estimating the fractal dimension to various time series for magnetic data. We now explain the method, using as an example the hourly Dst time series (World Data Center for Geomagnetism, Kyoto) ([World Data Center for Geomagnetism, http://wdc.kugi.kyoto-u.ac.jp/caplot/index.html](http://wdc.kugi.kyoto-u.ac.jp/caplot/index.html)).

Fractal dimensions can be defined in various ways in general, and for a time series in particular as well (Addison, 1997; Theiler, 1990). In general it can be said that they are numbers, which can be non-integer, measuring the complexity of a data set. In this work, we estimate the fractal dimension using the box-counting method (Addison, 1997) as shown below. First, a scatter diagram is obtained from each Dst time series, by plotting each datum versus the next one (see Fig. 1).

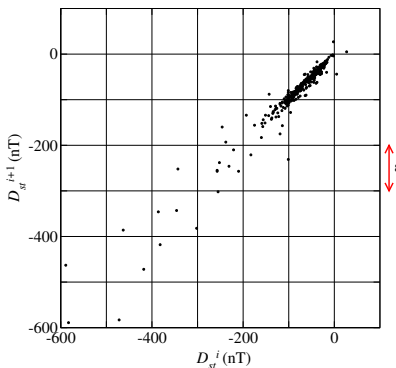


Figure 1. Scatter diagram for Dst time series, using data from 6 to 20 March 1989, containing a large geomagnetic storm. (Taken from Domínguez et al. (2014).)

Then, the scatter diagram is divided into square cells of a certain size ϵ . By decreasing ϵ , we eventually find a region where the number of cells containing points scale as a power law with ϵ :

$$N(\epsilon) \propto \epsilon^{-D}, \tag{1}$$

where D is the scatter plot box-counting dimension. We estimate the error in D through the least squares fit for the slope.

5 Further details and discussion on the method can be found in Domínguez et al. (2014).

The method as stated above was applied to the Dst time series where, given the width of the data windows used (the criterion is discussed in Sec. 3) and the time resolution of the data (one point per hour), it only made sense to build the scatter plot with consecutive data points.

10 However, when resolution is larger, as is the case with simulation and solar wind data, it is possible to consider different time delays. Thus, the scatter plot can be built by plotting the i -th data in the set, versus ~~de~~ the $(i + j)$ -th data, with $j \geq 1$ in general, and then the fractal dimension calculated depends on j , D_j . This was the approach in Domínguez et al. (2017) ~~and Muñoz et al. (2016)~~, and presented here in Secs. 4 and 5.

3 Dst time series

15 Some studies (Balasis et al., 2009; Papa and Sosman, 2008) have suggested that there is a relationship between the intensity and the complexity of the Dst time series. Here, we will first apply the technique discussed in Sec. 2 to investigate whether there is a connection between the level of geomagnetic activity and the fractal dimension of the Dst index.

Following Domínguez et al. (2014), we are interested in testing the usefulness of the method by first studying strong, clear events. Thus, we identify “storm states” and “quiet states” by locating Dst peaks, such that ~~$D_{st} < -220$ nT~~ $Dst < -220$ nT, which corresponds to intense magnetic storms. A “storm state” is defined by a two-week window centered on the minimum Dst value. This is done considering the typical time scale of a geomagnetic storm (Tsurutani and Gonzalez, 1994; Gonzalez et al., 1994). “Quiet states” simply correspond to the time window between consecutive “storm states”. This is illustrated in Fig. 2, corresponding to year 1989, and where four peaks are found.

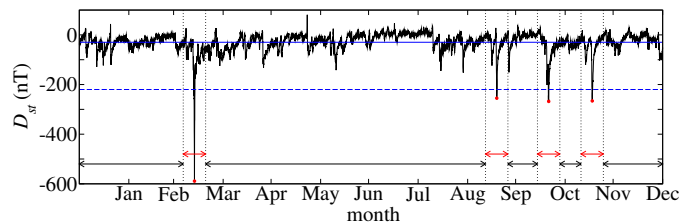


Figure 2. Storm and quiet states in the Dst time series for 1989, also indicating the average value of the Dst index (horizontal line), and the threshold used to identify storms (dashed line). Red (black) arrows indicate storm (quiet) states. (Taken from Domínguez et al. (2014).)

In the following, states within a year are label by integer numbers starting from 1. A fractal dimension is then calculated for each storm and each quiet state in the same year. Results for 1989 are shown in Fig. 3.

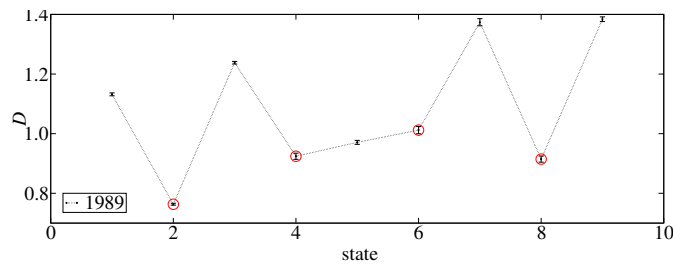


Figure 3. Box-counting dimension D for storm and quiet states for year 1989. Labels in the horizontal axis represent consecutive states as mentioned in Sec. 3. Storm states are marked with red circles, whereas errors are taken from the least squares linear fit. (Taken from Domínguez et al. (2014).)

Similar plots for 5 years of high geomagnetic activity were obtained (Domínguez et al., 2014). In general, storm states are found to have smaller fractal dimension than quiet states immediately before and after them, although there does not seem to be a clear correlation on the value of Dst itself (Domínguez et al., 2014). Thus, our statement on the decrease of the fractal dimension is an argument on its variation, rather than on its actual value. [These results are consistent with Balasis et al. \(2009\), where it is shown that the Tsallis entropy of the \$Dst\$ time series decreases during intense magnetic storms \(\$Dst < -150\$ nT in their case\).](#)

We have also studied variable width windows around a storm and moving windows across storms, and results have been consistent with the findings discussed.

In effect, as a window is widened around a storm, more “quiet” data are considered, and thus the fractal dimension of the data inside the window should increase. This is actually the case, as shown for instance in Fig. 4, where results for four storms are taken, selected because they are isolated enough to allow enlarging of the window around them without overlapping with neighboring storms (Domínguez et al., 2014).

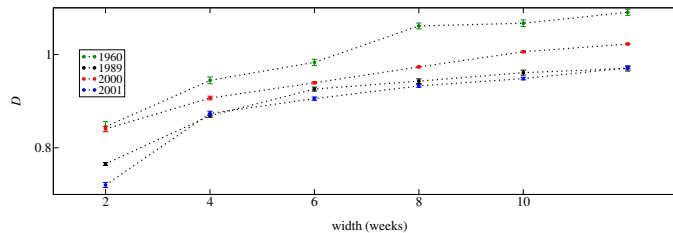


Figure 4. Box-counting dimension D for a storm state, as a function of window width. Lines correspond to storms on 1 April 1960, 13 March 1989, 6 April 2000, and 30 March 2001. (Taken from Domínguez et al. (2014).)

Regarding the moving windows analysis, results are illustrated for the 13 March 1989 storm in Fig. 5, comparing it with the Dst index.

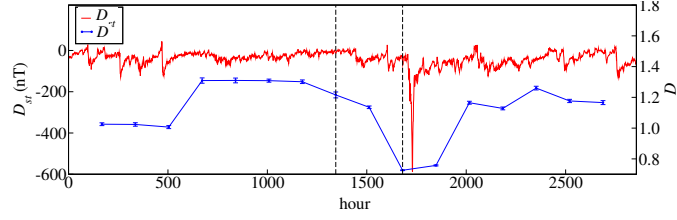


Figure 5. Box-counting dimension D (blue) and Dst index (red) for the 13 March 1989 geomagnetic storm. D decreases before the storm in the windows within the vertical lines. (Taken from Domínguez et al. (2014).)

As shown in Domínguez et al. (2014), the box-counting dimension of the Dst index decreases as the storm approaches for all cases studied. Moreover, this decrease occurs before the window includes the geomagnetic storm, as marked by the vertical lines in Fig. 5. Whether this is relevant for forecasting geomagnetic storm needs further study, as it may simply be due to an increase of the intermittency in the time series, unrelated to the upcoming dissipative event.

- 5 In Domínguez et al. (2014), systematic calculations of cross correlation between Dst and D were performed using year-long data for 1960, 1989, 2000, 2001, and 2003, suggesting that the decrease of the box-counting dimension is a robust feature.

4 MHD Shell Model

Given the intrinsic difficulties in using direct numerical simulations to describe turbulent flows, specially for large Reynolds numbers, shell models have been used for years in order to reproduce the nonlinear dynamics of fluid systems in large dynamical ranges, but with less degrees of freedom (Obukhov, 1971; Gledzer, 1973; Yamada and Ohkitani, 1988). An MHD shell model (Boffetta et al., 1999), in particular, is a dynamical system which aims to reproduce the main features of MHD turbulence. The model corresponds to a simplified version of the Navier-Stokes or MHD equations for turbulence, that conserves some of its invariants in the limit of no dissipation.

15 In this work, we use the MHD [shell model proposed by Gledzer, Okhitani and Yamada](#) (GOY shell model), which describes the dynamics of the energy cascade in MHD turbulence (Lepreti et al., 2004). The model is built up by dividing the wave-vector space (k -space) in N discrete shells of radius $k_n = k_0 2^n$ ($n = 0, 1, \dots, N$). Then, two complex dynamical variables $u_n(t)$ and $b_n(t)$ representing velocity and magnetic field increments on an eddy scale $l \sim k_n^{-1}$, are assigned to each shell.

The model consists of the following set of ordinary differential equations:

$$\frac{du_n}{dt} = -\nu k_n^2 u_n + ik_n (u_{n+1} u_{n+2} - b_{n+1} b_{n+2}) - ik_n \left\{ \frac{1}{4} (u_{n-1} u_{n+1} - b_{n-1} b_{n+1}) + \frac{1}{8} (u_{n-2} b_{n-1} - b_{n-2} u_{n-1}) \right\}^* + f_n, \quad (2)$$

$$20 \quad \frac{db_n}{dt} = -\eta k_n^2 b_n + ik_n \frac{1}{6} (u_{n+1} b_{n+2} - b_{n+1} u_{n+2}) - ik_n \frac{1}{6} \left\{ (u_{n-1} b_{n+1} - b_{n-1} u_{n+1}) + (u_{n-2} b_{n-1} - b_{n-2} u_{n-1}) \right\}^* + g_n, \quad (3)$$

where ν and η are, respectively, the kinematic viscosity and the resistivity; f_n and g_n are external forcing terms acting, respectively, on the velocity and magnetic fluctuations. The [symbol * represents a complex conjugate quantity. The](#) nonlinear terms have been obtained by imposing quadratic nonlinear coupling between neighbouring shells and the conservation of three MHD ideal invariants (Gloaguen et al., 1985; Lepreti et al., 2004).

5 The forcing terms are calculated according to the Langevin equation

$$\frac{d\tilde{f}_n}{dt} = -\frac{\tilde{f}_n}{\tau_0} + \tilde{\mu}, \quad (4)$$

where $\tilde{f}_n = f_n$ or g_n , τ_0 is a characteristic time of the largest shell and $\tilde{\mu}$ is a Gaussian white noise of width σ .

The magnetic energy dissipation rate is defined as

$$\epsilon_b(t) = \eta \sum_{n=1}^N k_n^2 |b_n^2|. \quad (5)$$

10 In our simulation, we set $\sigma = 0.01$, $\tau_0 = 0.25$, take $N = 19$ shells, and force the system on the largest shell ($f_1, g_1 \neq 0$). Similar parameters have been considered in previous studies using this model for modelling of solar flares statistics (Boffetta et al., 1999; Lepreti et al., 2004; Nigro et al., 2004).

We numerically integrate the shell model Eqs. (2)–(3) for various values of ν and η , and then we calculate the magnetic energy dissipation rate $\epsilon_b(t)$ (Eq. (5)).

15 Figure 6 shows a typical time behavior for $\epsilon_b(t)$.

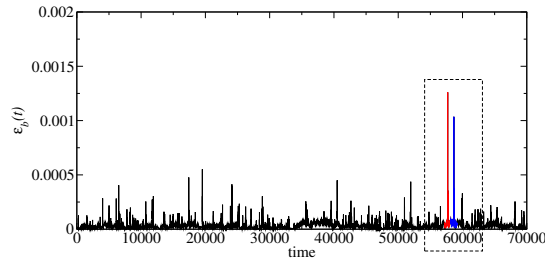


Figure 6. Time series of $\epsilon_b(t)$, Eq. (5), with $\nu = \eta = 10^{-4}$ in the shell model. The red and blue region inside the dashed box corresponds to an active state, as explained later in the text. (Taken from Domínguez et al. (2017).)

Previous works have compared the statistics of bursts in turbulent systems with the statistics of dissipative events in the shell model (Boffetta et al., 1999; Lepreti et al., 2004; Carbone et al., 2002). There, peaks in the $\epsilon_b(t)$ time series have been associated to dissipative events in the magnetized plasma. Following the ideas in [Domínguez et al. \(2014\) Sec. 3 regarding the size of events considered](#), we focus only on the largest peaks in the $\epsilon_b(t)$ time series, specifically, on dissipative events where
 20 the maximum value is larger than $\langle \epsilon_b \rangle + n\tilde{\sigma}$ where $\langle \epsilon_b \rangle$ is the average value of ϵ_b over all simulation time, $\tilde{\sigma}$ is the standard deviation of the ϵ_b time series in that window, and n is a certain integer. In this paper we discuss only results for $n = 10$, but in Domínguez et al. (2017) $n = 5$ was also considered, in order to assess the robustness of the results. Our aim is to study the dependence of the conclusions on ν and η in Eqs. (2) and (3).

We now apply the same techniques used to study the Dst index, as described in Secs. 3–5, to the $\epsilon_b(t)$ time series.

We first notice that, in general, setting parameters ν and η with arbitrary values yields $\epsilon_b(t)$ series which do not have the necessary intermittency level to resemble the Dst time series. Compare, for instance, the different panels in Fig. 16 in Domínguez et al. (2017), which shows that $Pm = 0.2$ leads to a very noisy output, unlike simulations with $Pm = 1.0$ or 2.0 , where individual, large peaks can be easily identified from the background. In fact, previous studies have shown that the statistics of bursts follows a power law for $Pm = 1$ (Boffetta et al., 1999; Lepreti et al., 2004; Carbone et al., 2002), and for this reason we start by taking $Pm = \nu/\eta = 1$.

Now, we need to define “active states” and “quiet states”. For the Dst case (Domínguez et al., 2014) there are natural time scales for which were used to define the occurrence and the duration of a geomagnetic storm. However this is not available for the output of the shell model, and our approach was to inspect the data to gain an intuition on this. As described in detail in Domínguez et al. (2017), we take $Pm = \nu/\eta = 1$ as fixed, and then a wide range of values of ν , in the interval $10^{-12} \leq \nu \leq 10^{-1}$. For each parameter set, we solve the shell model equations using a time step of $dt = 10^{-4}$ and for 7×10^8 iterations. We conclude that $n = 10$ is enough to filter most events, except for the largest ones.

Regarding the width of an active states, Fig. 6 is, among the various simulations we performed, the only case where two clear dissipative events were both close and distinguishable from each other. Thus we take this as a reference run, and since the separation between both peaks is 96 000 time steps, we define an “active state” in the shell model output as a window of 96 000 time steps, centered around a peak in the magnetic energy dissipation. Therefore, Fig. 6 shows two adjacent active states.

We now analyze the output of the simulation for given values of ν and n , identify active and quiet states, and calculate the scatter box-counting dimension for each state for various values of the sampling j . Figure 7 shows the results for $\nu = \eta = 10^{-3}$, $n = 10$. Integer numbers label states across the simulation, as previously explained in Sec. 3. In Fig. 7, active states correspond to labels “2” and “4”. Errors in D_j are calculated from the least squares linear fit.

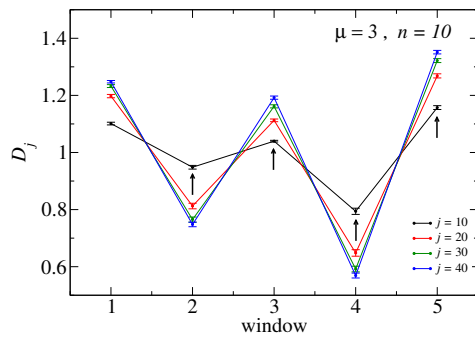


Figure 7. Box counting fractal dimension for $\epsilon_b(t)$ during quiet and active states for $n = 10$, with $\mu = 3$. Active states correspond to states labeled “2” and “4”. (Taken from Domínguez et al. (2017).)

For all values of j , we notice that active states have smaller fractal dimensions than neighbouring quiet ones, although the difference between quiet and active state decreases for lower values of j . In fact, it can be seen that the fractal dimension

depends on the value of the sampling parameter j , which suggests multifractal features of the data (Kadanoff et al., 1995; Pisarenko et al., 1993). We follow this idea by plotting the fractal dimension of each state as a function of j (see Fig. 8).

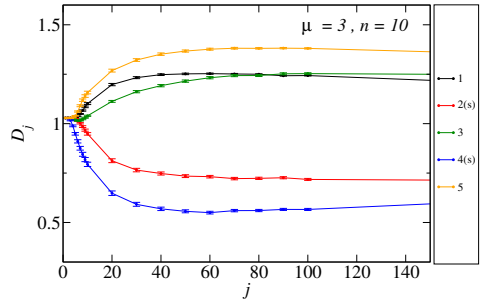


Figure 8. Box counting fractal dimension for quiet and active states, as a function of j , with $\mu = 3$. Numbers for each curve rotulate the states. We added an “(s)” in the legends, in order to highlight the active states. (Taken from Domínguez et al. (2017).)

Notice that for the smallest value of j ($j = 1$), the scatter plot is a straight line, thus its fractal dimension is $D = 1$. On the other hand, as j increases and is larger than the number of data points, $D = 0$, since such a sampling leaves only one point in the curve. Both limits are satisfied for all curves in Fig. 8. The nontrivial dependence of D for intermediate values of j reflects, as mentioned above, a multifractal nature of the $\epsilon_b(t)$ times series, since the fractal dimension depends on the sampling time scale.

As observed in Fig. 7, in Fig. 8 we also find lower fractal dimensions for active state than for quiet states. However, this does not hold for arbitrarily large values of j (see Figs. 6 and 7 in Domínguez et al. (2017)). We only find it for $j > 1$, but not too large, suggesting that it is within this range of values of j where the box counting fractal dimension has statistical information on the dissipative events in the time series. This, in turn, suggests that the findings in Sec. 3 and Domínguez et al. (2014) are not trivial.

In Domínguez et al. (2017) a more detailed analysis is carried out on the shell model results, exploring other simulation parameters (ν , η , magnetic Prandtl number), other ~~eriteron~~ critereon for defining active states ($n = 5$), and a systematic study of the correlations between the fractal dimension and the occurrence of dissipative events by means of the Student’s t -test. Results suggest that the intermittency level of the output time series is relevant, which has led us to perform the analyses for the shell model within a certain range of values of the Prandtl number, as well as of the viscosity and resistivity.

5 Magnetic clouds

As a way to illustrate how the ideas described so far could be used to characterize structures in space plasmas, we apply the method to study the time series for the magnetic field during magnetic clouds (Burlaga et al., 1981), as found in ACE [data \(ACE Science Center\)](http://www.srl.caltech.edu/ACE/ASC/) interplanetary magnetic field data (ACE Science Center, <http://www.srl.caltech.edu/ACE/ASC/>) and measured in the proximity of the L1 Lagrangian point. Magnetic clouds are transient structures ejected from the Sun, characterized by a large and smooth rotation of the magnetic field. Typically, a magnetic cloud event can be identified from single

spacecraft measurements by studying the evolution of the observed fields. During a given event, various stages can be identified: first, observation of solar wind prior to the cloud's arrival, then a sheath of compressed solar wind plasma immediately preceding a flux rope, where the magnetic field varies smoothly, and finally the background solar wind again. Note that slower-moving clouds traveling at speeds comparable to that of the ambient solar wind will not display prominent sheath regions.

5 Two events were selected: an event occurring on 12 July 2012 (MC1) and another on 11 July 2013 (MC2). Resolution for the magnetic field time series for ~~this event~~ these events is 16 seconds, covering a time span of 8 days for MC1 and 6 days for MC2, of which about 2 days correspond to the cloud ~~event itself~~ events themselves.

Figure 9 shows the time series corresponding to the two events analyzed, with the various stages marked.

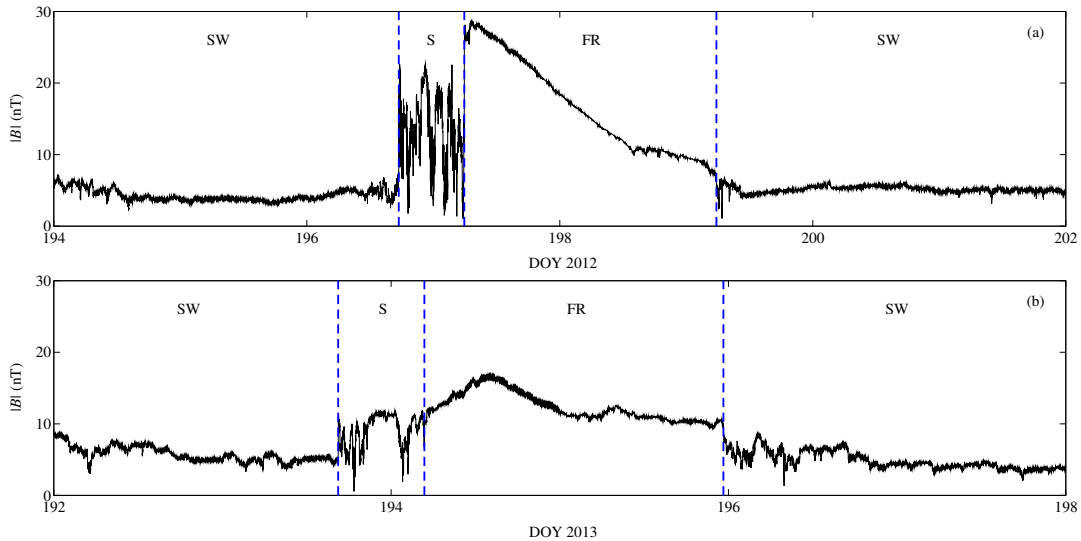


Figure 9. Time series for the magnetic field for the two magnetic cloud events analyzed. The different stages in the data are identified: solar wind (SW), sheath (S), and flux rope (FR). (a) MC1 event: 12 July 2012; (b) MC2 event: 11 July 2013.

10 It is found that the calculated fractal dimension evolves in a distinctive way as the various stages of the event as it passes by the spacecraft (namely surrounding solar wind, sheath, and flux rope). Given the high resolution of the data, it is possible to calculate the box-counting dimension for several delays, given by j , as was shown in Figs. 7 and 8 for the shell model analysis. In Fig. 10 the fractal dimension is calculated for each magnetic cloud stage, and various values of the sampling j are considered.

15 It can be noted that the fractal dimension, as calculated here, is indeed able to characterize magnetic cloud structures. The sheath state has a large dispersion of fractal dimension values as j is varied, consistent with its more turbulent regime; on the other hand, the quieter and more organized flux rope state exhibits a very low variation with j , basically a single fractal dimension at all time scales explored. As for the surrounding solar wind, it shows dispersion of D_j which is between the dispersion of values in the sheath and the flux rope ~~(Muñoz et al., 2016)~~.

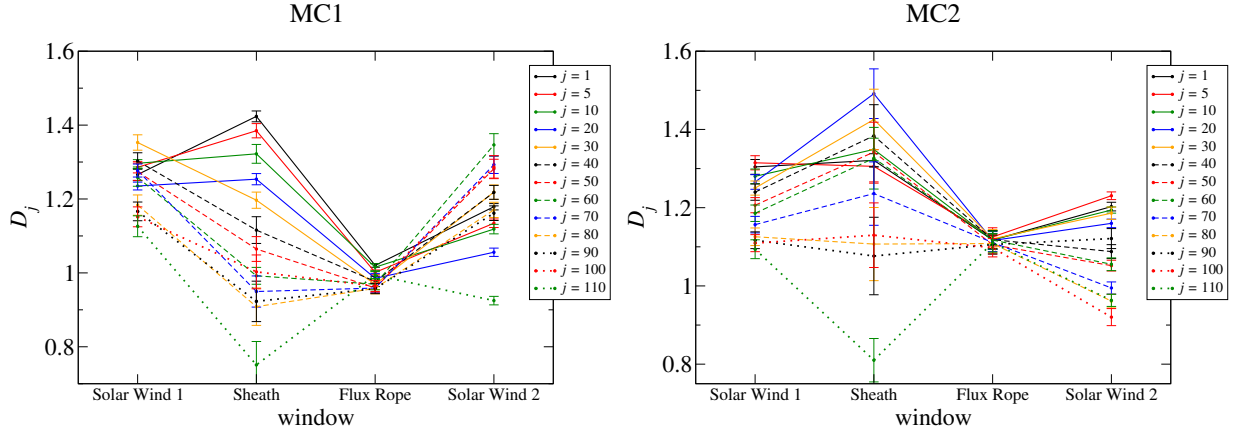


Figure 10. Box counting fractal dimension for two magnetic cloud events during the four stages of the time series: first the solar wind, then the sheath, then the flux rope, and finally the solar wind again. Several values for data sampling j are used.

The results above suggest that, from the point of view of the time series, the level of multifractality is large in the sheath, consistent with its more turbulent nature, intermediate in the solar wind, and that the flux rope magnetic field is essentially monofractal, consistent with the organized, smoother structure of the magnetic field expected in this region. We plan to carry out other multifractal analyses to complement these findings in a future publication.

5 Also, these results suggest that the fractal approach discussed in this paper may be useful to characterize the various stages of magnetic clouds, and in particular to setup a system automatically identify similar magnetic structures in spacecraft data.

6 Conclusions

In this manuscript, we have reviewed recent results obtained by us, regarding the evolution of complexity in magnetized plasmas, as described by geomagnetic data, simulation results for MHD turbulence, and spacecraft data in the solar wind.

10 This has been done by calculating a box-counting fractal dimension for time series of magnetic field data for the Dst geomagnetic index (Domínguez et al., 2014), the GOY shell model (Domínguez et al., 2017), and ACE data for two magnetic cloud events (Muñoz et al., 2016).

In general, it is found that the fractal dimension D decreases during dissipative events. In the case of the Dst time series this was verified for three different types of time windows: fixed width and stationary (Sec. 3), variable width (Sec. ??), and moving
15 windows (Sec. 53). And it was also found across several time scales, namely individual storms, full years, and the complete 23rd solar cycle, as detailed in Domínguez et al. (2014).

A similar behavior is found for the MHD shell model (Sec. 4). Thanks to the larger resolution of the simulation data as compared with the Dst data, several values of the time delay for data sampling could be made, showing that the results found in Domínguez et al. (2014) are nontrivial, in the sense that not all samplings yield similar results. Only intermediate, not too

large, values of the time delay (as represented by the value of j in Sec. 4 are able to clearly distinguish between active and quiet states. But, within the useful range of values for j , the fractal dimension of the active states is consistently smaller than the dimension of quiet states, and is always lower than 1, whereas the active states always have a dimension larger than 1. The dependence on j of the fractal dimension is interesting in itself, as it suggests that data have a multifractal structure, which is
5 consistent with suggestions and finding by other authors for space plasmas (Chapman et al., 2008, 1998; Valdivia et al., 2005).

Also, a more systematic test for the correlation between burst events in the shell model and the decrease in fractal dimension was performed, by means of the Student's t -test, as well as a more detailed exploration of the parameter space for the simulation. These results can be found in Domínguez et al. (2017).

As an application of these ideas, we take two magnetic cloud events in the solar wind, and use the techniques described
10 here to study the corresponding magnetic field time series. Our results, although preliminary, suggest that this method can characterize the various stages of the magnetic cloud structure.

Given the rich and complex dynamics governing the evolution of magnetized plasmas, we would not expect that a single index would be able to capture all their relevant information. In fact, multifractal analysis should be made in order to represent the dynamics of the systems studied more accurately, and such an analysis is currently being prepared for future publication.
15 However, the findings summarized here suggest that some relevant correlations can be observed, and that the dimension used here, although simple, may give some insight on the evolution of complexity of plasmas in the Sun-Earth system and MHD turbulent states.

Competing interests. The authors declare that they have no conflict of interest.

Acknowledgements. This project has been financially supported by FONDECYT under contracts Nos. 1110135, 1110729, and 1130273
20 (J.A.V.); Nos. 1080658, 1121144, and 1161711 (V.M.); and No. 3160305 (M.D.). M.D. also thanks a doctoral fellowship from CONICYT, and a Becas-Chile doctoral stay, contract No. 7513047. We are also thankful for financial support by CEDENNA (J.A.V.), and the US AFOSR Grant FA9550-16-1-0384 (J.A.V. and V.M.). [We thank the ACE/MAG instrument team and the ACE Science Center for providing the ACE data.](#)

References

- ACE Science Center: <http://www.srl.caltech.edu/ACE/ASC/index.html>.
- Addison, P. S.: *Fractals and Chaos, an Illustrated Course*, vol. 1, Institute of Physics Publishing, Bristol and Philadelphia, 2 edn., 1997.
- Aschwanden, M. J. and Aschwanden, P. D.: Solar Flare Geometries. I. The Area Fractal Dimension, *Astrophys. J.*, 674, 530–543, 2008.
- 5 Balasis, G., Daglis, I. A., Kapisiris, P., Manda, M., Vassiliadis, D., and Eftaxias, K.: From Pre-Storm Activity to Magnetic Storms: A Transition Described in Terms of Fractal Dynamics, *Ann. Geophys.*, 24, 3557–3567, 2006.
- Balasis, G., Daglis, I. A., Papadimitriou, C., Kalimeri, M., Anastasiadis, A., and Eftaxias, K.: Investigating Dynamical Complexity in the Magnetosphere using Various Entropy Measures, *J. Geophys. Res.*, 114, A00D06, 2009.
- Berger, M. A. and Asgari-Targhi, M.: Self-Organized Braiding and the Structure of Coronal Loops, *Astrophys. J.*, 705, 347–355, 2009.
- 10 Boffetta, G., Carbone, V., Giuliani, P., Veltri, P., and Vulpiani, A.: Power Laws in Solar Flares: Self-Organized Criticality or Turbulence?, *Phys. Rev. Lett.*, 83, 4662–4665, 1999.
- Borovsky, J. E.: A Model for the MHD Turbulence in the Earth's Plasma Sheet: Building Computer Simulations, in: *Multiscale Processes in the Earth's Magnetosphere: From Interball to Cluster*, edited by Sauvaud, J.-A. and Němeček, Z., vol. 178 of *NATO Science Series. II. Mathematics, Physics and Chemistry*, pp. 217–253, Kluwer Academic Publishers, The Netherlands, 2004.
- 15 Burlaga, L. F., Sittler, E., Mariani, F., and Schwenn, R.: Magnetic Loop Behind and Interplanetary Shock: Voyager, Helios, and IMP 8 Observations, *J. Geophys. Res.*, 86, 6673–6684, 1981.
- Cadavid, A. C., Lawrence, J. K., Ruzmaikin, A. A., and Kayleng-Knight, A.: Multifractal Models of Small-Scale Solar Magnetic Fields, *Astrophys. J.*, 429, 391–399, 1994.
- Carbone, V., Cavazzana, R., Antoni, V., Sorriso-Valvo, L., Spada, E., Regnoli, G., Giuliani, P., Vianello, N., Lepreti, F., Bruno, R., Martines, E., and Veltri, P.: To What Extent Can Dynamical Models Describe Statistical Features of Turbulent Flows?, *Europhys. Lett.*, 58, 349–355, 2002.
- 20 Chang, T.: Self-Organized Criticality, Multi-Fractal Spectra, Sporadic Localized Reconnection and Intermittent Turbulence in the Magnetotail, *Phys. Plasmas*, 6, 4137, 1999.
- Chang, T. and Wu, C. C.: Rank-Ordered Multifractal Spectrum for Intermittent Fluctuations, *Phys. Rev. E*, 77, 045401, 2008.
- 25 Chapman, S. C., Watkins, N. W., Dendy, R. O., Helander, P., and Rowlands, G.: A Simple Avalanche Model as an Analogue for Magnetospheric Activity, *Geophys. Res. Lett.*, 25, 2397–2400, 1998.
- Chapman, S. C., Hnat, B., and Kiyani, K.: Solar Cycle Dependence of Scaling in Solar Wind Fluctuations, *Nonlinear Proc. Geophys.*, 15, 445–455, 2008.
- Conlon, P. A., Gallagher, P. T., McAteer, R. T. J., Ireland, J., Young, C. A., Kestener, P., Hewett, R. J., and Maguire, K.: Multifractal Properties of Evolving Active Regions, *Solar Phys.*, 248, 297–309, 2008.
- 30 Dendy, R. O., Chapman, S. C., and Paczusi, M.: Fusion, Space and Solar Plasmas as Complex Systems, *Plasma Phys. Controlled Fusion*, 49, A95–A108, 2007.
- Dias, V. H. A. and Papa, A. R. R.: Statistical Properties of Global Geomagnetic Indexes as a Potential Forecasting Tool for Strong Perturbations, *J. Atmos. Sol. Terr. Phys.*, 72, 109–114, 2010.
- 35 Dimitropoulou, M., Georgoulis, M., Isliker, H., Vlahos, L., Anastasiadis, A., Strintzi, D., and Moussas, X.: The correlation of fractal structures in the photospheric and the coronal magnetic field, *Astron. Astrophys.*, 505, 1245–1253, 2009.
- Ditlevsen, P. D.: *Turbulence and Shell Models*, Cambridge, 2011.

- Domínguez, M., Muñoz, V., and Valdivia, J. A.: Temporal Evolution of Fractality in the Earth's Magnetosphere and the Solar Photosphere, *J. Geophys. Res.*, 119, 3585–3603, 2014.
- Domínguez, M., Nigro, G., Muñoz, V., and Carbone, V.: Study of Fractal Features of Magnetized Plasma Through an MHD Shell Model, *Phys. Plasmas*, 24, 072308, 2017.
- 5 El-Alaoui, M., Richardd, R. L., Ashour-Abdalla, M., Walker, R. J., and Goldstein, M. L.: Turbulence in a Global Magnetohydrodynamic Simulation of the Earth's Magnetosphere during Northward and Southward Interplanetary Magnetic Field, *Nonlinear Proc. Geophys.*, 19, 165–175, 2012.
- Gallagher, P. T., Phillips, K. J. H., Harra-Murnion, L. K., and Keenan, F. P.: Properties of the Quiet Sun EUV Network, *Astron. Astrophys.*, 335, 733–745, 1998.
- 10 Georgoulis, M. K.: Are Solar Active Regions with Major Flares More Fractal, Multifractal, or Turbulent Than Others?, *Solar Phys.*, 276, 161–181, 2012.
- Gledzer, E. B.: System of Hydrodynamic Type Allowing 2 Quadratic Integrals of Motion, *Sov. Phys. Dokl. SSSR*, 18, 216, 1973.
- Gloaguen, C., Léorat, J., Pouquet, A., and Grappin, R.: A scalar model for MHD turbulence, *Physica D*, 17, 154–182, 1985.
- Gonzalez, W. D., Joselyn, J. A., Kamide, Y., Kroehl, H. W., Rostoker, G., Tsurutani, B. T., and Vasyliunas, V. M.: What Is A Geomagnetic Storm?, *J. Geophys. Res.*, 93, 5771–5792, 1994.
- 15 Hwang, K.-J., Kuznetsova, M. M., Sahraoui, F., Goldstein, M. L., Lee, E., and Parks, G. K.: Kelvin-Helmholtz Waves under Southward Interplanetary Magnetic Field, *J. Geophys. Res.*, 116, 1978–2012, 2011.
- Kadanoff, L., Lohse, D., Wang, J., and Benzi, R.: Scaling and Dissipation in the GOY Shell Model, *Phys. Fluids*, 7, 617–629, 1995.
- Kiyani, K., Chapman, S. C., Hnat, B., and Nicol, R. M.: Self-Similar Signature of the Active Solar Corona within the Inertial Range of Solar-Wind Turbulence, *Phys. Rev. Lett.*, 98, 211101, 2007.
- 20 Klimas, A. J., Valdivia, J. A., Vassiliadis, D., N. Baker, D., Hesse, M., and Takalo, J.: Self-Organized Criticality in the Substorm Phenomenon and its Relation to Localized Reconnection in the Magnetospheric Plasma Sheet, *J. Geophys. Res.*, 105, 18765–18780, 2000.
- Kozelov, B. V.: Fractal Approach to Description of the Auroral Structure, *Ann. Geophys.*, 21, 2011–2023, 2003.
- Lawrence, J. K., Ruzmaikin, A. A., and Cadavid, A. C.: Multifractal Measure of the Solar Magnetic Field, *Astrophys. J.*, 417, 805–811, 1993.
- 25 Lepreti, F., Carbone, V., Giuliani, P., Sorriso-Valvo, L., and Veltri, P.: Statistical Properties of Dissipation Bursts within Turbulence: Solar Flares and Geomagnetic Activity, *Planet. Space Sci.*, 52, 957–962, 2004.
- Macek, W. M.: Chaos and Multifractals in the Solar Wind, *Adv. Space Res.*, 46, 526–531, 2010.
- McAteer, R. J., Gallagher, P. T., and Conlon, P. A.: Turbulence, Complexity, and Solar Flares, *Adv. Space Res.*, 45, 1067–1074, 2010.
- 30 McAteer, R. T. J., Gallagher, P. T., and Ireland, J.: Statistics of Active Region Complexity: A Large-Scale Fractal Dimension Survey, *Astrophys. J.*, 631, 628–635, 2005.
- Muñoz, V., Domínguez, M., and Good, S.: Evolution of fractality in magnetic clouds, in: *Proceedings 18th International Congress on Plasma Physics*, Kaohsiung, Taiwan, 27 June–1 July 2016. Abstract book p. 387., 2016.
- Nigro, G., Malara, F., Carbone, V., and Veltri, P.: Nanoflares and MHD Turbulence in Coronal Loops: A Hybrid Shell Model, *Phys. Rev. Lett.*, 92, 194501, 2004.
- 35 Nykyri, K., Grison, B., Cargill, P. J., Lavraud, B., Lucek, E., Dandouras, I., Balogh, A., Cornilleau-Wehrlin, N., and Rème, H.: Origin of the Turbulent Spectra in the High-Altitude Cusp: Cluster Spacecraft Observations, *Ann. Geophys.*, 24, 1057–1075, 2006.

- Obukhov, A. M.: Some General Properties of Equations Describing The Dynamics of the Atmosphere, *Akad. Nauk. SSSR, Izv. Serria Fiz. Atmos. Okeana*, 7, 695–704, 1971.
- Osella, A., Favetto, A., and Silbergleit, V.: A Fractal Temporal Analysis of Moderate and Intense Magnetic Storms, *J. Atmos. Sol. Terr. Phys.*, 59, 445–451, 1997.
- 5 Papa, A. R. R. and Sosman, L. P.: Statistical Properties of Geomagnetic Measurements as a Potential Forecast Tool for Strong Perturbations, *J. Atmos. Sol. Terr. Phys.*, 70, 1102–1109, 2008.
- Pisarenko, D., Biferale, L., Courvoisier, D., Frisch, U., and Vergassola, M.: Further results on multifractality in shell models, *Phys. Fluids A*, 5, 2533–2538, 1993.
- Sundkvist, D., Krasnoselskikh, V., Shukla, P. K., Vaivads, A., André, M., Buchert, S., and Rème, H.: In Situ Multi-Satellite Detection of
10 Coherent Vortices as a Manifestation of Alfvénic Turbulence, *Nature*, 436, 825–828, 2005.
- Takalo, J., Timonen, J., Klimas, A., Valdivia, J., and Vassiliadis, D.: Nonlinear Energy Dissipation in a Cellular Automaton Magnetotail Field Model, *Geophys. Res. Lett.*, 26, 1813–1816, 1999.
- Theiler, J.: Estimating Fractal Dimension, *J. Opt. Soc. Am. A*, 7, 1055–1073, 1990.
- Tsurutani, B. T. and Gonzalez, W. D.: The Causes of Geomagnetic Storms during Solar Maximum, *EOS, Transactions, American Geophysical
15 Union*, 75, 49–53, 1994.
- Uritsky, V. M., Klimas, A. J., and Vassiliadis, D.: Analysis and Prediction of High-Latitude Geomagnetic Disturbances based on a Self-Organized Criticality Framework, *Adv. Space Res.*, 37, 539–546, 2006.
- Valdivia, J. A., Milikh, G. M., and Papadopoulos, K.: Model of Red Sprites Due to Intracloud Fractal Lightning Discharges, *Radio Science*, 33, 1655–1666, 1988.
- 20 Valdivia, J. A., Klimas, A., Vassiliadis, D., Uritsky, V., and Takalo, J.: Self-Organization in a Current Sheet Model, *Space Sci. Rev.*, 107, 515–522, 2003.
- Valdivia, J. A., Rogan, J., Muñoz, V., Gomberoff, L., Klimas, A., Vassiliadis, D., Uritsky, V., Sharma, S., Toledo, B., and Wastavino, L.: The Magnetosphere as a Complex System, *Adv. Spa. Res.*, 35, 961–971, 2005.
- Valdivia, J. A., Rogan, J., Muñoz, V., and Toledo, B.: Hysteresis Provides Self-Organization in a Plasma Model, *Space Sci. Rev.*, 122,
25 313–320, 2006.
- Valdivia, J. A., Rogan, J., Muñoz, V., Toledo, B., and Stepanova, M.: The Magnetosphere as a Complex System, *Adv. Space Res.*, 51, 1934–1941, <https://doi.org/10.1016/j.asr.2012.04.004>, 2013.
- Witte, R. S. and Witte, J. S.: *Statistics*, chap. 6, Wiley, 9 edn., 2009.
- World Data Center for Geomagnetism, Kyoto: <http://wdc.kugi.kyoto-u.ac.jp/caplot/index.html>.
- 30 Yamada, M. and Ohkitani, K.: Lyapunov Spectrum of a Model of Two-Dimensional Turbulence, *Phys. Rev. Lett.*, 60, 983–986, 1988.
- Zimbardo, G., Greco, A., Veltri, P., Vörös, Z., and Taktakishvili, A. L.: Magnetic Turbulence in and Around the Earth's Magnetosphere, *Astrophys. Space Sci. Trans.*, 4, 35–40, 2008.