

# Reply to Anonymous Referee #1

September 20, 2017

1. With all due respect to the referee the claim that

"Long's equation is a linear form of equation..." is incorrect.

The classical form of Long's (equation 2.23 in the paper) for the stream function  $\psi$  and the perturbation  $\eta$  (eq. 2.28) are BOTH NONLINEAR equations.

In the literature some authors IGNORE the nonlinear terms to obtain eq. 2.47 . However this is a singular limit of the equation and some of the "physical contents" of the solution is lost.(e.g the dependence of  $\psi$  on the height).

2. Solutions of Long equation are used routinely in the experimental analysis of gravity waves. Therefore one can not underestimate the practical importance of this equation (see my bibliography for references). (Many topographical obstacles are of moderate heights)

3. The referee seems to be unaware of my previous paper: "Time Dependent Long's Equation, Nonlin. Processes Geophys., 22, pp. 133-138 (2015)". In which I offered an extension of Long's equation to time dependent flows.

4. The NOVEL part of the current paper consists of a sequence of transformations which "somehow" linearize Long's equation and lead to analytic form of the solution WITHOUT scarifying any of the physical contents of the equation. In the process we find also "solitonic form solutions" of this equation which never appeared in the literature before. The solutions presented also show how the amplitude of the gravity waves depend on the height.

5. The statement that Long's equation requires "particular form of the upstream flow" is incorrect. As was shown in the paper e.g eq 2.44 (as the referee admits).

**Reply to Anonymous Referee #2**

1. The transformations on Long's equation which are introduced in this paper were "inspired" by the transformations which are used to linearize Ricatti and Burger's equations (log-type transformation). From a physical point of view the motivation comes from the desire to replace the nonlinearities due to the derivatives of  $\eta$  in (??) by expressions that correspond to  $\eta$  itself. This replacement will enable us to make approximations which are based on physical insights.

2. As to the figures: They demonstrate the change in the gravity wave amplitude with height and the effect that non-isothermal flow can have on this wave.

I revised the paper to reflect these changes (in red)

**Side Remarks**

1. I added a reference to Dobreil-Jacotin paper.

2. Although the restriction to 2D is obvious I added a remark to this effect in the introduction and added a reference to the paper by Akylas & Davis (2001) (The reference to Yih is already there).

1 Analytic Solutions for Long's Equation and its  
2 Generalization

3 Mayer Humi

Department of Mathematical Sciences

Worcester Polytechnic Institute

100 Institute Road

Worcester, MA 01609

4 **Abstract**

5 Two dimensional, steady state, stratified, isothermal, atmospheric flow over topography  
6 is governed by Long's equation. Numerical solutions of this equation were derived and used  
7 by several authors. In particular these solutions were applied extensively to analyze the  
8 experimental observations of gravity waves. In the first part of this paper we derive an  
9 extension of this equation to non-isothermal flows. Then we devise a transformation that  
10 simplifies this equation. We show that this simplified equation admits solitonic type solutions  
11 in addition to regular gravity waves. These new analytical solutions provide insights about  
12 the propagation and amplitude of gravity waves over topography.

# 14 1 Introduction

15 Two dimensional steady state flow of isothermal, incompressible stratified fluid over topography  
16 is modeled by Long's equation [Long 1953, Long 1954, Long 1955, Long 1959]. A generalization  
17 of this equation to three dimensions flows appeared in the literature (Akilas and Davis 2001).  
18 However in the following we restrict our discussion to two dimensions.

19 Numerical solutions of long's equation for base flow without shear over simple terrain, which  
20 consists of one hill, were derived and analyzed in the literature by several authors.[Drazin 1961,  
21 Yih 1967, Drazin and Moore 1967, Lily and Klemp 1979, Smith 1980, Peltier and Clark 1983,  
22 Smith 1989, Durran 1992,Smith and Kruse 2017].

23 In these studies it was usual to approximate the Brunt-Väisälä frequency by a constant or a step  
24 function. In addition two physical parameters which control the stratification and dispersive effects  
25 of the atmosphere were set to zero. Under these approximations, one of the leading second order  
26 derivatives in Long's equation drop out. Moreover the equation become linear (the nonlinear terms  
27 disappear). In this singular limit Long's equation reduces to that of a linear harmonic oscillator  
28 over the computational domain. The impact of these approximations on the validity of the solution  
29 was analyzed in depth in the literature [Smith 1980, Peltier and Clark 1983, Smith 1989]. These  
30 studies demonstrated that these approximations set limits on the physical applicability of these  
31 solutions.

32 Solutions of Long's equation were used also as a framework for the examination and study of  
33 experimental data on gravity waves. [Shutts et al 1988, Shutts et al 1994, Fritts and Alexander  
34 2003, Jumper et al 2004, Vernin et al 2007, Richter et al 2010, Geller et al 2013]. In all of these  
35 studies it was assumed that the base flow is shearless. However this assumption is incorrect, in  
36 general, and is not justified by the experimental data. (For a comprehensive list of references see  
37 [Yih 1980,Baines 1995,Nappo 2012]).

38 A new method to derive analytic solutions of Long's equation was initiated by the present  
39 author in [Humi 2004, Humi 2007, Humi 2009, Humi 2010 ,Humi 2015]. It was demonstrated that

40 Long's equation can be simplified for shearless base flow with mild assumptions on the nonlinear  
41 terms. In this framework we were able to identify the "slow variable" in Long's equation. This  
42 variable controls the emergence of nonlinear oscillations in this equation. In addition we proved  
43 the existence of self similar solutions and derived a formula for the attenuation of the gravity  
44 waves amplitude with height. These results follow from the general properties of Long's equation  
45 and the nonlinear terms present in this equation.

46 We considered the effect that shear in the base flow has on the generation of gravity waves  
47 and their amplitude in [Humi 2006]. A new form of Long's equation in which the stream function  
48 is replaced by the atmospheric density was derived in [Humi 2007]. Finally a generalization of  
49 Long's equation to time dependent flows appeared in [Humi 2015].

50 It obvious however that atmospheric flows over topography are not isothermal in general (see  
51 [Miglietta and Rotunno 2014, Richter et al 2010, Smith and Kruse,2017] and their bibliography).  
52 With this motivation we derive, in the first part of this paper, an extension of this equation to  
53 include non-isothermal flows with free convection.

54 In the second part of the paper we devise a new transformation on Long's equation (isothermal  
55 or not) that yields new analytic solutions for the perturbation from the base flow (under mild  
56 approximations). In particular we demonstrate that there exist "solitonic type solutions" to this  
57 equation in addition regular gravity waves. We derive also an expression which relates the change  
58 of the amplitude of the gravity waves as a function of height.

59 The plan of the paper is as follows: In the first part of Sec. 2 we presents an overview of  
60 the derivation of the isothermal Long's equation. In the second part we derive the corresponding  
61 Long's equation for flows with free convection. In Sec. 3 we introduce a transformation which  
62 (essentially) linearizes the equation for the perturbation from the base flow. Sec 4 discusses the  
63 application of this transformation to a flow with shear. We summarize with some conclusions in  
64 Section 5.

## 65 2 Derivation of Long's Equation

66 In the first part of this section we provide a short overview of the (classical) isothermal Long's  
 67 equation and in the second part we generalize this equation to include free convection.

### 68 2.1 Isothermal Long's Equation

In two dimensions  $(x, z)$  the flow of a steady isothermal, inviscid and incompressible stratified fluid is modeled by the following equations:

$$u_x + w_z = 0 \quad (2.1)$$

$$u\rho_x + w\rho_z = 0 \quad (2.2)$$

$$\rho(uu_x + ww_z) = -p_x \quad (2.3)$$

$$\rho(uw_x + ww_z) = -p_z - \rho g. \quad (2.4)$$

69 In these equations subscripts denote differentiation with respect to the subscripted variable,  
 70  $\mathbf{u} = (u, w)$  is the fluid velocity,  $p$  denotes the pressure,  $\rho$  denotes the density and  $g$  is the acceler-  
 71 ation of gravity,

To non-dimensionalize (2.1)-(2.4) we introduce the following scaled variables,

$$\begin{aligned} \bar{x} &= \frac{x}{L}, \quad \bar{z} = \frac{N_0}{U_0}z, \quad \bar{u} = \frac{u}{U_0}, \quad \bar{w} = \frac{LN_0}{U_0^2}w \\ \bar{\rho} &= \frac{\rho}{\bar{\rho}_0}, \quad \bar{p} = \frac{N_0}{gU_0\bar{\rho}_0}p, \end{aligned} \quad (2.5)$$

In these equations  $L$  represents a characteristic length, and  $U_0$  is the free stream velocity, and  $\bar{\rho}_0$  is the averaged base density which is considered to be a constant.  $N_0^2$  represents an averaged value of the Brunt-Väisälä frequency which is defined as

$$N^2 = -\frac{g}{\rho_0} \frac{d\rho_0}{dz} \quad (2.6)$$

72 where  $\rho_0(z)$  is the base density.

Using these new variables (2.1)-(2.4) take the following form (the bars were dropped for brevity)

$$u_x + w_z = 0 \quad (2.7)$$

$$u\rho_x + w\rho_z = 0 \quad (2.8)$$

$$\beta\rho(uu_x + ww_z) = -p_x \quad (2.9)$$

$$\beta\rho(uw_x + wz_z) = -\mu^{-2}(p_z + \rho). \quad (2.10)$$

Where,

$$\mu = \frac{U_0}{N_0 L}. \quad (2.11)$$

$$\beta = \frac{N_0 U_0}{g}, \quad (2.12)$$

73 In these equations  $\mu$  is the long wave parameter which controls dispersive effects or equivalently  
 74 the deviation from the hydrostatic approximation. When  $\mu = 0$  the hydrostatic approximation is  
 75 fully satisfied [Smith 1980, Smith 1989]. The coefficient  $\beta$  is the "Boussinesq parameter" [Baines  
 76 1995, Nappo 2012], which controls stratification effects (assuming  $U_0 \neq 0$ )

Equation (2.7) implies that it is possible to introduce a stream function  $\psi$  so that

$$u = \psi_z, \quad w = -\psi_x. \quad (2.13)$$

Using this definition of  $\psi$  it is possible to rewrite (2.8) as

$$J\{\rho, \psi\} = 0. \quad (2.14)$$

The symbol  $J(f, g)$  is defined for any two smooth functions  $f, g$  as

$$J\{f, g\} = \frac{\partial f}{\partial x} \frac{\partial g}{\partial z} - \frac{\partial f}{\partial z} \frac{\partial g}{\partial x} \quad (2.15)$$

77 It is easy to show that when  $J(f, g) = 0$  it is possible to express each of these functions in terms  
 78 of the other [Yih 1980]. It follows then from (2.14) that the functions  $\rho, \psi$  are dependent on each  
 79 other. This means that one can express  $\rho$  as  $\rho(\psi)$  or  $\psi$  as  $\psi(\rho)$ .

Using (2.13) one can rewrite the momentum equations (2.9), (2.10) in terms of  $\psi$ .

$$\beta\rho(\psi_z\psi_{zx} - \psi_x\psi_{zz}) = -p_x \quad (2.16)$$

$$\beta\rho(-\psi_z\psi_{xx} + \psi_x\psi_{xz}) = -\mu^{-2}(p_z + \rho) \quad (2.17)$$

To eliminate  $p$  from (2.16), (2.17) we multiply (2.17) by  $\mu^2$  and then differentiate (2.16), (2.17) with respect to  $z, x$  respectively and subtract. We obtain,

$$\rho_z(\psi_z\psi_{zx} - \psi_x\psi_{zz}) + \rho(\psi_z\psi_{zx} - \psi_x\psi_{zz})_z - \quad (2.18)$$

$$\begin{aligned} & \beta\mu^2\rho_x(-\psi_z\psi_{xx} + \psi_x\psi_{xz}) - \\ & \beta\mu^2\rho(-\psi_z\psi_{xx} + \psi_x\psi_{xz})_x = \rho_x \end{aligned} \quad (2.19)$$

Using (2.14) and the fact that

$$\rho_x = \rho_\psi\psi_x, \quad \rho_z = \rho_\psi\psi_z, \quad (2.20)$$

we can eliminate  $\rho$  from eq. (2.18) and obtain after some algebra

$$\begin{aligned} & J\{\psi_{zz} + \mu^2\psi_{xx}, \psi\} - \\ & N^2(\psi)J\left\{\frac{\beta}{2}(\psi_z^2 + \mu^2\psi_x^2), \psi\right\} = N^2J\{z, \psi\} \end{aligned} \quad (2.21)$$

where

$$N^2(\psi) = -\frac{\rho_\psi}{\beta\rho} \quad (2.22)$$

<sup>80</sup> is the nondimensional Brunt-Väisälä frequency which is (by definition) a function of  $\psi$ .

As a result we obtain the following equation for  $\psi$  [Baines 1995, Nappo 2012].

$$\psi_{zz} + \mu^2\psi_{xx} - N^2(\psi) \left[ z + \frac{\beta}{2}(\psi_z^2 + \mu^2\psi_x^2) \right] = G(\psi) \quad (2.23)$$

<sup>81</sup> Equation (2.23) is referred to in the literature as "Long's equation" but it was derived first by  
<sup>82</sup> Dubril-Jacotin (Dubreil-Jacotin 1935)



83 In (2.23),  $G(\psi)$  is a function that has to be determined from the base flow. To do so we consider  
 84 (2.23) at  $x = -\infty$  and assume that the base flow is a function of  $z$  only. Then express the left  
 85 hand side of (2.23) in terms of  $\psi$  only to determine  $G(\psi)$ . (Here we assumed following [Yih 1967,  
 86 Yih 1980, Baines 1995] that the disturbances from the base flow do not propagate upstream).

For example if we consider a shearless base flow with  $u(-\infty, z) = 1$  then

$$\psi(-\infty, z) = z \quad (2.24)$$

and

$$G(\psi) = -N^2(\psi)\left(\frac{\beta}{2} + \psi\right). \quad (2.25)$$

Equation (2.23) becomes:

$$\begin{aligned} &\psi_{zz} + \mu^2\psi_{xx} - \\ &N^2(\psi) \left[ z - \psi + \frac{\beta}{2} (\psi_z^2 + \mu^2\psi_x^2 - 1) \right] = 0. \end{aligned} \quad (2.26)$$

87 It follows from this example that different base flows at  $x = -\infty$  will yield different functional  
 88 forms of  $G(\psi)$ .

We consider now a perturbation  $\eta$  from a shearless base flow  $u(-\infty, z) = 1$  viz.

$$\eta = \psi - z. \quad (2.27)$$

Substituting this expression in (2.23) leads to

$$\eta_{zz} + \mu^2\eta_{xx} - \frac{N^2\beta}{2}(\eta_z^2 + \mu^2\eta_x^2 + 2\eta_z) + N^2\eta = 0. \quad (2.28)$$

## 89 2.2 Long's Equation with Free Convection

When the flow is not isothermal (2.4) has to be modified as follows

$$\rho(uw_x + ww_z) = -p_z - \gamma T \rho g \quad (2.29)$$

where  $T$  is the temperature and  $\gamma$  is the thermal expansion coefficient of the fluid. Moreover an equation for the temperature has to be added

$$\mathbf{u} \cdot \nabla T = \chi \nabla^2 T, \quad (2.30)$$

where  $\chi$  is its thermometric conductivity. These equations hold under the assumption that

$$\frac{gh}{c^2} \ll \gamma T_0$$

90 where  $h$  is the fluid column height,  $c$  is the velocity of sound in the fluid and  $T_0$  is the characteristic  
91 temperature difference.

We can non-dimensionalize these equations using (2.5) with the addition

$$\bar{T} = \frac{T}{T_0}$$

(as in the previous subsection we drop the bars). Eqs. (2.29), (2.30) become

$$\beta \rho (uw_x + ww_z) = -\mu^{-2} (p_z + \gamma T \rho) \quad (2.31)$$

$$\mathbf{u} \cdot \nabla T = \frac{1}{Pe} \nabla^2 T \quad (2.32)$$

92 where  $Pe = \frac{U_0 L}{\chi}$  is the Peclet number.

Using (2.7) to introduce a stream function  $\psi$ , the momentum equations (2.9), (2.31) become

$$\beta \rho (\psi_z \psi_{zx} - \psi_x \psi_{zz}) = -p_x \quad (2.33)$$

$$\beta \rho (-\psi_z \psi_{xx} + \psi_x \psi_{xz}) = -\mu^{-2} (p_z + \gamma T \rho) \quad (2.34)$$

Using the same strategy as in the previous subsection to eliminate  $p$  from these equations leads to

$$\begin{aligned} & \rho_z (\psi_z \psi_{zx} - \psi_x \psi_{zz}) + \rho (\psi_z \psi_{zx} - \psi_x \psi_{zz})_z - \\ & \mu^2 \rho_x (-\psi_z \psi_{xx} + \psi_x \psi_{xz}) - \\ & \mu^2 \rho (-\psi_z \psi_{xx} + \psi_x \psi_{xz})_x = \frac{\gamma}{\beta} (T \rho)_x. \end{aligned} \quad (2.35)$$

If the diffusion processes in (2.32) can be ignored i.e.  $|\frac{1}{P_e}\nabla^2 T| \ll 1$  then this equation can approximated by

$$J\{T, \psi\} = 0, \quad (2.36)$$

i.e.  $T = T(\psi)$ . Furthermore since  $\rho = \rho(\psi)$  it follows that

$$(T\rho)_x = -J\{z, T\rho\} = -\frac{\partial(T\rho)}{\partial\psi}J\{z, \psi\}, \quad (2.37)$$

Using 2.14), (2.36) and (2.20) we can eliminate  $\rho$  from eq. (2.35) and obtain after some algebra that

$$\begin{aligned} & J\{\psi_{zz} + \mu^2\psi_{xx}, \psi\} - \\ & N^2(\psi)J\{\frac{\beta}{2}(\psi_z^2 + \mu^2\psi_x^2), \psi\} = M^2J\{z, \psi\} \end{aligned} \quad (2.38)$$

where

$$M^2 = -\frac{\gamma}{\beta\rho}(T\rho)_\psi. \quad (2.39)$$

Using these definitions it follows that

$$\psi_{zz} + \mu^2\psi_{xx} - N^2(\psi)\frac{\beta}{2}(\psi_z^2 + \mu^2\psi_x^2) - M^2(\psi)z = G(\psi) \quad (2.40)$$

93 Eq. (2.40) can be considered as a "Generalized form of Long's equation". which include the effects  
 94 of free convection. It contains two parameters  $N^2$ ,  $M^2$ . The additional parameter  $M^2$  controls  
 95 the change of the temperature profile in the flow.

The function  $G(\psi)$  in (2.40) can be determined using the same strategy as before. Thus if  $\psi(-\infty, z)$  is given by (2.24) then

$$G(\psi) = -N^2(\psi)\frac{\beta}{2} - M^2(\psi)\psi \quad (2.41)$$

and eq. (2.40) becomes:

$$\psi_{zz} + \mu^2\psi_{xx} - N^2(\psi)\frac{\beta}{2}(\psi_z^2 + \mu^2\psi_x^2 - 1) - M(\psi)^2(z - \psi) = 0. \quad (2.42)$$

For a perturbation  $\eta = \psi - z$ , from a base flow  $u(-\infty, z) = 1$  we obtain from (2.40)

$$\eta_{zz} + \mu^2\eta_{xx} - \frac{N^2\beta}{2}(\eta_z^2 + \mu^2\eta_x^2 + 2\eta_z) + M^2\eta = 0 \quad (2.43)$$

## 96 2.3 Boundary Conditions and Approximations

We consider here numerical solutions of Long's equation over unbounded domain with a general base flow. The topography of the domain is represented by by a function  $h(x)$  whose maximum height is  $H$ . The boundary conditions that are imposed on the stream function  $\psi$  are

$$\psi(-\infty, z) = \psi_0(z) \tag{2.44}$$

$$\psi(x, \tau h(x)) = \text{constant}, \quad \tau = \frac{HN_0}{U_0} \tag{2.45}$$

97 The constant in (2.45) which represents the value of the stream line over the topography  $h(x)$  is  
 98 (usually) set to zero.

99 To determine the proper boundary condition on  $\psi(\infty, z)$  we note that Long's equation has no  
 100 dissipation terms. Therefore radiation boundary conditions have to be imposed on  $\psi$  in this limit.  
 101 Similarly it is appropriate to impose radiation boundary conditions on  $\psi(x, \infty)$  [Durrant 1992].

When  $|\tau| \ll 1$  the boundary condition (2.45) can be approximated (using (2.27) by

$$\eta(x, 0) = -\tau h(x). \tag{2.46}$$

102 When  $N, M$  are set to a constant, (2.28), (2.43) become invariant with respect to translations  
 103 in  $x, z$ . This implies that these equations admit self-similar solutions in the form  $\eta = f(mx + nz)$   
 104 [Humi 2004]. These solutions represent gravity waves that are generated by the flow over the  
 105 topography.

106 To compute numerical solutions for the perturbation  $\eta$  over topography it has been common  
 107 in the literature to consider (2.28) in the limit  $\mu = 0$  and  $\beta = 0$  [Durrant 1992, Lily and Klemp  
 108 1979]. In addition  $N$  is set to a constant or a step function over the computational domain.

In these limits (2.28) becomes a linear equation

$$\eta_{zz} + N^2\eta = 0. \tag{2.47}$$

109 The limit  $\beta = 0$  can be obtained either by letting  $N_0 \rightarrow 0$  or  $U_0 \rightarrow 0$ . For the stratification to  
 110 persists one has to assume that the limit  $\beta = 0$  is obtained as  $U_0 \rightarrow 0$ .

111 Eq. (2.47) is a singular limit of (2.28). This is due to the fact that one of the leading second  
 112 order derivatives drops when  $\mu = 0$ . Moreover the nonlinear terms in this equation drop out when  
 113  $\beta = 0$ . The approximate solutions that are derived from (2.47) and their physical limitations were  
 114 considered extensively in the literature [Drazin and Moore 1967, Durran 1992, Humi 2004a, Humi  
 115 2006]. It was found that strong restrictions have to be imposed on the validity of these solutions  
 116 even under the assumption that the base flow is shearless. However these approximations and  
 117 the solutions that are derived from (2.47) are used routinely in the analysis of experimental  
 118 atmospheric data [Shutts et al 1988, Baines 1995, Jumper et al 2004, Vernin et al 2007].

The general solution of eq. (2.47) is of the form

$$\eta(x, z) = q(x) \cos(Nz) + p(x) \sin(Nz). \quad (2.48)$$

119 The functions  $p(x)$ ,  $q(x)$  have to satisfy the boundary conditions derived from (2.45) and the  
 120 radiation boundary conditions. To satisfy the radiation boundary conditions  $p(x)$  and  $q(x)$  have  
 121 to satisfy [Baines 1995, Nappo 2012] that  $p(x) = H[q(x)]$ , where  $H[q(x)]$  is the Hilbert transform  
 122 of  $q(x)$ .

To satisfy the boundary condition on the terrain one has to solve the following integral equation  
 [Drazin 1961, Lily and Klemp 1979, Durran 1992]

$$q(x) \cos(\tau N f(x)) + H[q(x)] \sin(\tau N f(x)) = -\tau h(x) . \quad (2.49)$$

### 123 **3 Reductions and Transformations.**

124 To begin with we observe that in (2.23), (2.40), (2.28), and (2.43) one can suppress the appearance  
 125 of the parameter  $\mu^2$  ( $\mu \neq 0$ ) by applying the transformation  $x = \mu \bar{x}$ . Performing this transfor-  
 126 mation and assuming that  $N$ ,  $M$  are constants, these equations become invariant with respect to

127 translations in  $x, z$ . As a result they have solutions of the form  $\eta = f(k\bar{x} + mz)$  [Humi 2004].  
 128 These are gravity waves that are generated by the atmospheric flow over the terrain.

Eq. (2.28) becomes

$$\eta_{zz} + \eta_{xx} - \alpha^2(\eta_z^2 + \eta_x^2 + 2\eta_z) + N^2\eta = 0. \quad (3.50)$$

where

$$\alpha^2 = \frac{N^2\beta}{2}$$

Similarly (2.43) becomes

$$\eta_{zz} + \eta_{xx} - \alpha^2(\eta_z^2 + \eta_x^2 + 2\eta_z) + M^2\eta = 0 \quad (3.51)$$

To these equations we apply the transformation

$$\phi = e^{-\alpha^2\eta} - 1. \quad (3.52)$$

129 **Remark:** The mathematical "inspiration" for this transformation comes from somewhat similar  
 130 transformations which linearize the Riccati and Burger's equations. From a physical point of view  
 131 the motivation comes from the desire to replace the nonlinearities due to the derivatives of  $\eta$   
 132 in (3.51) by expressions that correspond to  $\eta$  itself. This replacement will enable us to make  
 133 approximations which are based on physical insights.

Eqs. (3.50), (3.51) respectively become

$$\nabla^2\phi - 2\alpha^2\frac{\partial\phi}{\partial z} + N^2(1 + \phi)\ln(1 + \phi) = 0 \quad (3.53)$$

$$\nabla^2\phi - 2\alpha^2\frac{\partial\phi}{\partial z} + M^2(1 + \phi)\ln(1 + \phi) = 0 \quad (3.54)$$

Since  $|\alpha^2\eta| \ll 1$  it follows that  $|\phi| \ll 1$  and we can make the approximation  $\ln(1 + \phi) \approx \phi$ .  
 Equations (3.53) and (3.54) become

$$\nabla^2\phi - 2\alpha^2\frac{\partial\phi}{\partial z} + N^2(1 + \phi)\phi = 0 \quad (3.55)$$

$$\nabla^2\phi - 2\alpha^2\frac{\partial\phi}{\partial z} + M^2(1 + \phi)\phi = 0 \quad (3.56)$$

To simplify (3.55) and (3.56) we introduce the transformation

$$\phi = e^{\alpha^2 z} y. \quad (3.57)$$

Equation (3.55) becomes

$$\nabla^2 y + (N^2 - \alpha^4) y + N^2 e^{\alpha^2 z} y^2 = 0. \quad (3.58)$$

If  $|\alpha^2 z| \ll 1$  (in domain of interest) we can approximate this equation by

$$\nabla^2 y + (N^2 - \alpha^4) y + N^2 y^2 = 0. \quad (3.59)$$

This equation has analytic closed form solution

$$y = \frac{3(N^2 - \alpha^4)}{n^2} [\tanh^2(C_1 + C_2 x - i\nu z) - 1] \quad (3.60)$$

where

$$\nu^2 = N^2 - \alpha^4 + 4C_2^2$$

134 and  $C_1, C_2$  are integration constants.

135 Equation (3.60) represents solutions to a nonlinear equation for  $y$  (and hence  $\eta$ ). Since there  
 136 is no superposition principle for these solutions, (3.60) represents therefore new "soliton type  
 137 solution" for  $\eta$  (in 3.50). Using the approximation  $e^{\alpha^2 z} = 1 + \alpha^2 z$  this solution for  $\phi$  (using (3.57))  
 138 satisfies (3.53) up to terms of order  $\alpha^2$ .

139 If  $\alpha^2 z$  is not small one can approximate  $e^{\alpha^2 z}$  by  $1 + \alpha^2 z$  and use a perturbation expansion  
 140  $y = y_0 + \alpha^2 y_1$  to compute  $y_1$  (numerically).

141 Similar treatment can be applied to (3.56).

### 142 **3.1 Linearized Equations and Solutions**

To obtain a real solution for  $\phi$  we neglect the  $\phi^2$  term in (3.55) and (3.56) as being of second order. These approximations linearize (3.53) and (3.54) and yield (respectively)

$$\nabla^2 \phi - 2\alpha^2 \frac{\partial \phi}{\partial z} + N^2 \phi = 0 \quad (3.61)$$

$$\nabla^2 \phi - 2\alpha^2 \frac{\partial \phi}{\partial z} + M^2 \phi = 0 \quad (3.62)$$

143 These equations can be solved using separation of variables. Due to the similarity between (3.61)  
144 and (3.62) we discuss henceforth the solution procedure for (3.61) only.

If we substitute  $\phi = f(x)g(z)$  in (3.61) and perform separation of variables we obtain the following equations for  $f, g$

$$\frac{d^2 f}{dx^2} + \omega^2 f = 0 \quad (3.63)$$

$$\frac{d^2 g}{dz^2} - 2\alpha^2 \frac{dg}{dz} + (N^2 - \omega^2)g = 0 \quad (3.64)$$

Hence

$$f_\omega = A(\omega)e^{i\omega x} + B(\omega)e^{-i\omega x} \quad (3.65)$$

$$g_\omega = e^{\alpha^2 z} (C_1(\omega)e^{i\nu z} + C_2(\omega)e^{-i\nu z}) \quad (3.66)$$

145 where  $C_1, C_2$ , are constants and  $\nu = \sqrt{N^2 - \alpha^4 - \omega^2}$ . Hence for a wave to exist (in the z-direction)  
146 we must have  $N^2 \geq \alpha^4 + \omega^2$ . In addition the wave amplitude increases with height by a factor of  
147  $e^{\alpha^2 z}$ .

Similarly for (3.62) we obtain the same expression for  $f(x)$  and

$$g_\omega = e^{\alpha^2 z} (C_3(\omega)e^{i\lambda z} + C_4(\omega)e^{-i\lambda z}) \quad (3.67)$$

148 where  $\lambda = \sqrt{M^2 - \alpha^4 - \omega^2}$ .

The general solution of (3.61) can be written as

$$\begin{aligned} \phi = & \quad (3.68) \\ & e^{\alpha^2 z} \int [(D_1(\omega)e^{i(\nu z + \omega x)} + D_2(\omega)e^{-i(\nu z + \omega x)}] d\omega + \\ & e^{\alpha^2 z} \int [D_3(\omega)e^{i(\nu z - \omega x)} + D_4(\omega)e^{-i(\nu z - \omega x)}] d\omega \end{aligned}$$

149 Since the exponents multiplying  $D_1$  and  $D_2$  are conjugates it follows that for  $\phi$  to be real we must  
150 have  $\bar{D}_1 = D_2$  (where the bar stands for complex conjugation). Similarly we must have  $\bar{D}_3 = D_4$ .



The radiation boundary condition at  $z \rightarrow \infty$  requires that the group velocity of the outgoing wave is positive. For a hydrostatic flow the dispersion relation is given by

$$\lambda(\omega) = \omega - \frac{\text{sgn}(\nu)N\omega}{\nu}$$

and the group velocity is

$$v_g = \frac{\partial \lambda}{\partial \nu} = \frac{\text{sgn}(\nu)N\omega}{\nu^2}$$

151 Hence  $v_g > 0$  if  $\nu\omega > 0$

152 Since the integration in (3.68) is over positive  $\omega$  it follow then that the last two terms in this  
153 equation must be zero ( $\nu\omega < 0$ ).

To satisfy the boundary condition (2.46) we observe (using (3.52)) that

$$\eta = -\frac{\ln(1 + \phi)}{\alpha^2}. \quad (3.69)$$

Hence the boundary condition (2.46) becomes

$$\phi(x, 0) = e^{\alpha^2 \tau h(x)} - 1 \approx \alpha^2 \tau h(x) \quad (3.70)$$

It follows then from (3.68) that

$$\begin{aligned} & \int 2\text{Re}D_1(\omega) \cos(\omega x) d\omega \\ & - \int 2\text{Im}D_1(\omega) \sin(\omega x) d\omega = \alpha^2 \tau h(x) \end{aligned} \quad (3.71)$$

154 This can be satisfied by standard Fourier integral expansion of  $h(x)$ .

155 The special case  $\mu = 0$  was treated in detail in [Humi 2004] .

## 156 3.2 Application

To examine the application of the formulas derived above we consider the flow over a "witch of Agnesi" hill where the height of the topography is given by

$$h(x) = \frac{a^2}{(a^2 + x^2)}. \quad (3.72)$$

The Fourier integral expansion of  $h(x)$  is

$$h(x) = \int_0^{\infty} A(\omega) \cos(\omega x) d\omega \quad (3.73)$$

where

$$A(\omega) = ae^{-a\omega}.$$

Using (3.71) this implies that  $ImD_1 = 0$  and

$$D_1(\omega) = \frac{\alpha^2 \tau A(\omega)}{2}. \quad (3.74)$$

Substituting this result in (3.68) yields

$$\phi = e^{\alpha^2 z} \left\{ \int [D_1(\omega) e^{i(\nu z + \omega x)} + D_2(\omega) e^{-i(\nu z + \omega x)}] d\omega \right\}. \quad (3.75)$$

Hence,

$$\phi = \alpha^2 \tau e^{\alpha^2 z} \int e^{-a\omega} \cos(\nu z + \omega x) d\omega \quad (3.76)$$

157 From this expression we can compute  $\eta$  using (3.69). Fig. 1 displays the solution for  $\eta$  for  
 158 isothermal flow with  $N = 1.5$ ,  $\beta = 0.01$ ,  $a = 1$ , and  $\tau = 1$ . Fig. 2 displays the solution for  
 159  $\eta$  for non-isothermal flow with the same parameters as in Fig. 1 but with  $M = 2$ . **These plots**  
 160 **demonstrate the dependence of the gravity wave amplitude on the height and the impact that**  
 161 **non-isothermal flow might have on the direction and amplitude of the wave**

## 162 4 Solutions with Shear

We consider here a base flow with  $u = z$  i.e  $\psi(-\infty, z) = z^2$ . Using (2.23) to compute  $G(\psi)$  we find that

$$G(\psi) = 2 - N^2(\psi^{1/2} + 2\beta\psi). \quad (4.77)$$

Long's equation (2.23) (with  $\mu \neq 0$ ) becomes

$$\begin{aligned} \psi_{zz} + \mu^2 \psi_{xx} - N^2(\psi) \left[ z + \frac{\beta}{2} (\psi_z^2 + \mu^2 \psi_x^2) \right] = \\ 2 - N^2(\psi^{1/2} + 2\beta\psi) \end{aligned} \quad (4.78)$$

Applying the transformation  $\bar{x} = \frac{x}{\mu}$  we obtain (after dropping the bars)

$$\begin{aligned} & (\psi_{zz} - \alpha^2 \psi_z^2) + (\psi_{xx} - \alpha^2 \psi_x^2) - N^2 z = \\ & 2 - N^2(\psi^{1/2} + 2\beta\psi). \end{aligned} \quad (4.79)$$

For a perturbation  $\eta$  from the base flow i.e.  $\psi = z^2 + \eta$  we obtain the following equation (where the square root was linearized assuming  $|\eta| \ll 1$ )

$$\begin{aligned} & \eta_{zz} - 4\alpha^2 z \eta_z - \alpha^2 (\eta_z)^2 + \eta_{xx} - \\ & \alpha^2 (\eta_x)^2 + \left(4\alpha^2 + \frac{N^2}{2z}\right) \eta = 0. \end{aligned} \quad (4.80)$$

We introduce now the transformation

$$\phi = e^{-\alpha^2 \eta} - b \quad (4.81)$$

where  $b \neq 0$  is a parameter to be determined latter. Applying this transformation to (4.80) and making the approximation  $\ln(b + \phi) = \ln(b) + \frac{\phi}{b}$  (assuming  $|\phi| \ll b$ ) leads to the following

$$\begin{aligned} & 2bz\phi_{zz} + 2bz\phi_{xx} - 8b\alpha^2 z^2 \phi_z + \\ & (8\alpha^2 z + N^2)[\phi^2 + b(\ln(b) + 1)\phi + b^2 \ln(b)] = 0. \end{aligned} \quad (4.82)$$

Dropping the nonlinear term in  $\phi^2$  and letting  $b = e^{-1}$  (to suppress the term containing  $\phi$ ) (4.82) becomes

$$2z\phi_{zz} + 2z\phi_{xx} - 8\alpha^2 z^2 \phi_z - e^{-1}(8\alpha^2 z + N^2) = 0 \quad (4.83)$$

A particular solution  $\phi_p$  of this (linear) equation is [Abramowitz and Stegun 1974]

$$\begin{aligned} \phi_p = & -\frac{1}{4} \int e^{2\alpha^2 z^2 - 1} [-4\alpha\sqrt{2\pi} \operatorname{erf}(\sqrt{2}\alpha z) + \\ & N^2 \Gamma(0, 2\alpha^2 z^2)] dz \end{aligned} \quad (4.84)$$

The homogeneous part of (4.83) can be solved by separation of variables viz.  $\phi = f(x)g(z)$  where  $f(x)$  satisfies (3.63). The resulting equation for  $g(z)$  has analytic solution in terms of Kummer

functions [Abramowitz M. and Stegun 1974].

$$g(z) = C_1 z \text{Kummer}M\left(\nu_1, \frac{3}{2}, 2\alpha^2 z^2\right) + C_2 z \text{Kummer}U\left(\nu_1, \frac{3}{2}, 2\alpha^2 z^2\right) \quad (4.85)$$

163 where  $\nu_1 = \frac{4\alpha^2 + \omega^2}{8\alpha^2}$ .

For  $\mu = 0$  the equation for the perturbation  $\eta$  is

$$\eta_{zz} - 4\alpha^2 z \eta_z - \alpha^2 (\eta_z)^2 + \eta \left( \frac{N^2}{z} + 4\alpha^2 \right) = 0. \quad (4.86)$$

Applying the transformation (4.81) to (4.86) with  $b = e^{-1}$  and omitting the nonlinear term in  $\phi^2$  we obtain for  $\phi$  the same equation as (4.83) without the derivatives with respect to  $x$ . A particular solution of this equation is given by (4.84) while the solution of the homogeneous equation is

$$\phi(z) = c_1 \text{erf}(i\sqrt{2}\alpha z) + c_2 \quad (4.87)$$

164 where  $c_1, c_2$  are constants.

## 165 5 Summary and Conclusions.

166 Computing numerical solutions for Long's equation has been always a challenge even in some  
 167 (singular) limiting cases. In this paper we introduced a transformation of this equation which  
 168 under mathematically acceptable approximations leads to analytic expressions for the solutions.  
 169 In particular these solutions capture the dependence of the wave amplitude on the height.

170 The paper provides also an extension of Long's equation to the case where the atmospheric  
 171 flow is not isothermal. This new equation can be solved analytically by the same transformation  
 172 that is used for Long's equation.

- 174 [1] Abramowitz M. and Stegun I.: Handbook of Mathematical Functions, Dover Publications,  
175 New York, 1974.
- 176 [2] Akylas T. R. and Davis K.S.: Three-dimensional aspects of nonlinear stratified flow over  
177 topography near the hydrostatic limit, J. Fluid Mech. 428, pp 81-105, 2001
- 178 [3] Baines P.G. : Topographic effects in Stratified flows. Cambridge Univ. Press, New York,  
179 1995.
- 180 [4] Drazin P.G. : On the steady flow of a fluid of variable density past an obstacle. Tellus 13,  
181 239-251, 1961.
- 182 [5] Drazin P.G. and Moore D.W. : Steady two dimensional flow of fluid of variable density  
183 over an obstacle. J. Fluid. Mech. 28, 353-370. 1967
- 184 Dubreil-Jacotin, M. L.:Complement a une note anterrieure sur les ondes de type permanent  
185 dans les liquides hterog'nes, Atti Accad. Lincei, Rend. Cl. Sci. Fis. Mat. Nat. 21, pp 344-  
186 366, 1935
- 187 [6] Durran D.R. : Two-Layer solutions to Long's equation for vertically propagating mountain  
188 waves. Q.J.R. Meteorol. Soc. 118, 415-433, 1992.
- 189 [7] Fritts, D. C., and Alexander M.J.: Gravity wave dynamics and effects in the middle atmo-  
190 sphere, Rev. Geophys., 41(1), 1003, doi:10.1029/2001RG000106, 2003.
- 191 [8] Geller, Marvin A., and Coauthors : A comparison between gravity wave momentum fluxes  
192 in observations and climate models. J. Climate, 26, 6383-6405, 2013
- 193 [9] Humi M : On the Solution of Long's Equation Over Terrain. Il Nuovo Cimento C 27,  
194 219-229, 2004.

- 195 [10] Humi M : On the Solutions of Long's Equation with Shear SIAM J. Appl. Math. 66, No.  
196 6 1839-1852, 2006.
- 197 [11] Humi M : Density Representation of Long's Equation, Nonlin. Processes Geophys, 14,  
198 273-283, 2007.
- 199 [12] Humi M : Long's Equation in Terrain Following Coordinates Nonlin. Processes Geophys.,  
200 16, 533-541, 2009 .
- 201 [13] Humi M : The Effect of Shear on the Generation of Gravity Waves, Nonlin. Processes  
202 Geophys 17, 201-210, 2010.
- 203 [14] Humi M.:Time Dependent Long's Equation, Nonlin. Processes Geophys., 22, pp. 133-138  
204 (2015).
- 205 [15] G.Y. Jumper, E. A. Murphy, A.J.Ratkowski and J. Vernin : Multisensor Campaign to  
206 correlate atmospheric optical turbulence to gravity waves, AIAA paper AIAA-2004-1077,  
207 2004.
- 208 [16] Lily D.K. and Klemp J.B. : The effect of terrain shape on nonlinear hydrostatic mountain  
209 waves. J. Fluid Mech. 95, 241-261, 1979.
- 210 [17] Long R.R. : Some aspects of the flow of stratified fluids I. Theoretical investigation. Tellus  
211 5, 42-57, 1953.
- 212 [18] Long R.R. : Some aspects of the flow of stratified fluids II. Theoretical investigation. Tellus  
213 6, 97-115, 1954.
- 214 [19] Long R.R. : Some aspects of the flow of stratified fluids III.Continuous density gradients.  
215 Tellus 7, 341-357, 1955.
- 216 [20] Long R.R. : The motion of fluids with density stratification. J. Geo Res. 64, 2151-2163,  
217 1959.

- 218 [21] Miglietta M.M. and R. Rotunno R: Numerical Simulations of Sheared Conditionally Un-  
219 stable Flows over a Mountain Ridge, *J. Atmos. Sci.*, 71, 1747-1762, 2014
- 220 [22] Carmen J. Nappo : *Atmospheric Gravity Waves*, 2nd edition, Academic Press, Boston,  
221 2012.
- 222 [23] Peltier W.R. and Clark T.L. : Nonlinear mountain waves in two and three spatial dimen-  
223 sions. *Q.J.R. Meteorol. Soc* 109, 527-548, 1983.
- 224 [24] Richter, J. H., Fabrizio Sassi, Rolando R. Garcia,: Toward a physically based gravity wave  
225 source parameterization in a general circulation model *J. Atmos.Sci.* 67, 136-156, 2010.
- 226 [25] G.J. Shutts, M.Kitchen and P.H. Hoare : A large amplitude gravity wave in the lower  
227 stratosphere detected by radiosonde, *Q.J. R. Meteorological Soc.* 114, 579-594, 1988.
- 228 [26] Shutts, G.J., Healey, P. and Mobbs, S.D.: A multiple sounding technique for the study of  
229 gravity waves, *Q.J.R. Meteorol. Soc.* 120,pp 59-77, 1994
- 230 [27] Smith R.B. : Linear theory of stratified hydrostatic flow past an isolated mountain. *Tellus*  
231 32, 348-364, 1980.
- 232 [28] Smith R.B. : Hydrostatic airflow over mountains. *Advances in Geophysics* 31, 1-41, 1989.
- 233 [29] Smith R.B., and Kruse G.K.: Broad-Spectrum Mountain Waves *J. Atmos. Sci.* 74, 1381-  
234 1402, 2017
- 235 [30] Vernin, J., Trinquet, H., Jumper, G., Murphy, E., Ratkowski, A : OHP02 gravity wave  
236 campaign in relation to optical turbulence, *Journal Environmental Fluid Mechanics*, 7,  
237 371-382, 2007.
- 238 [31] Yih C-S : Equations governing steady two-dimensional large amplitude motion of a strat-  
239 ified fluid. *J. Fluid Mech.* 29, 539-544, 1967.
- 240 [32] Yih C-S : *Stratified flows*. Academic Press, New York, NY, 1980.

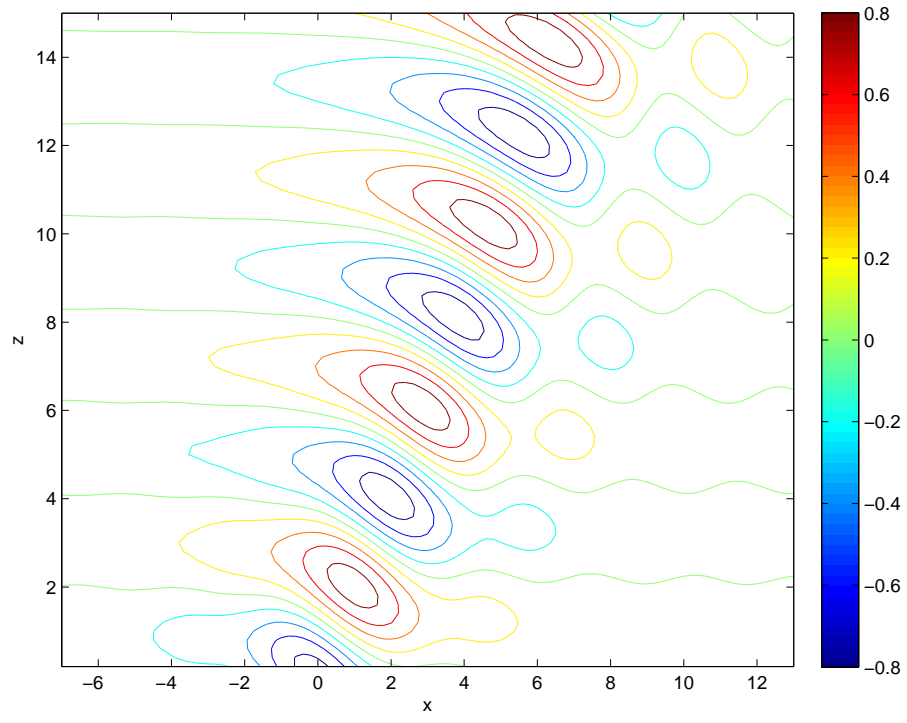


Figure 1: Contour plot of  $\eta$  for isothermal flow over a topography



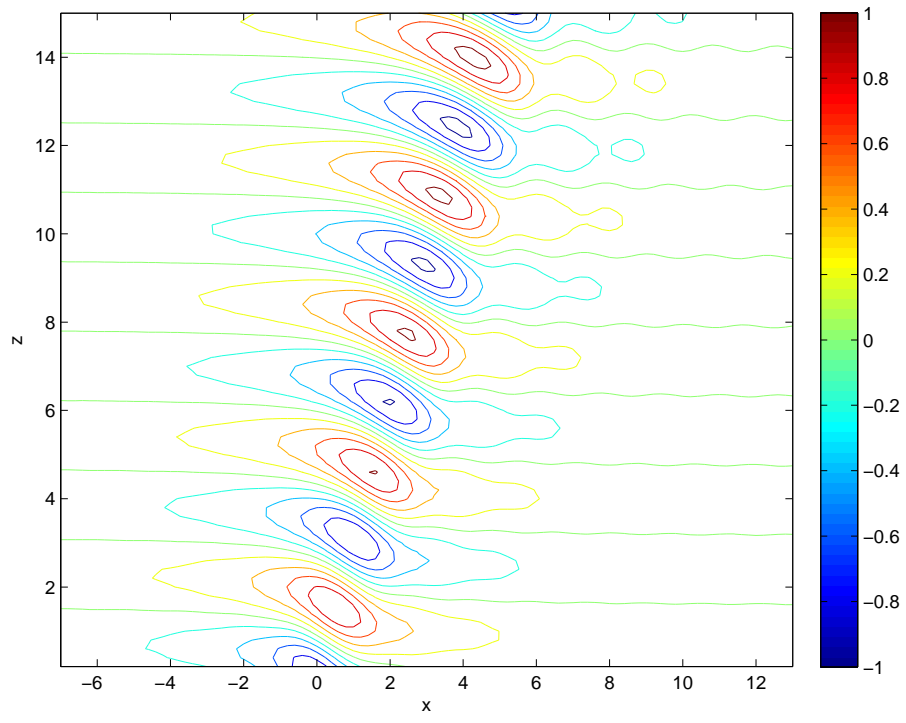


Figure 2: Contour plot of  $\eta$  for non-isothermal flow over a topography