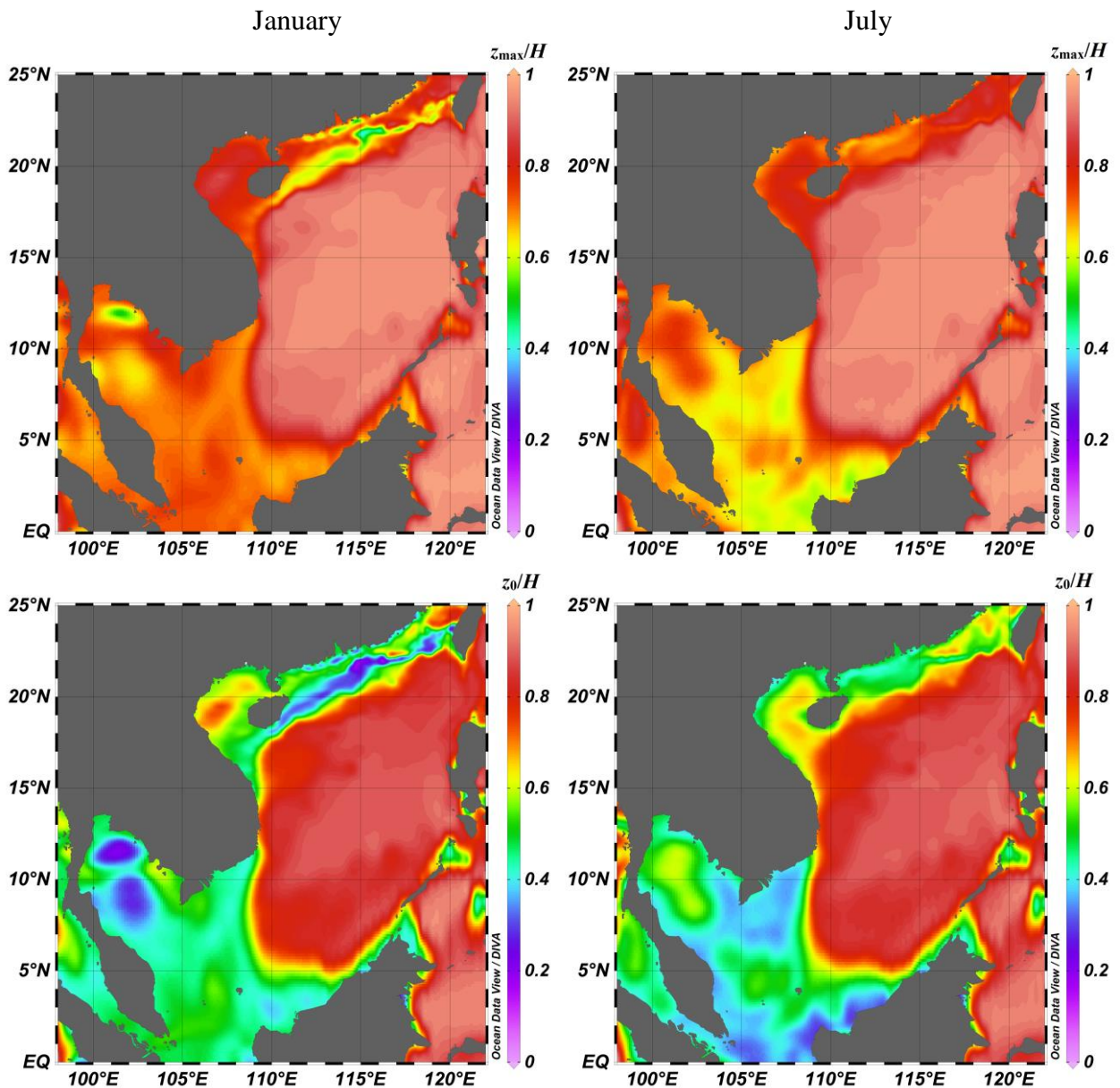


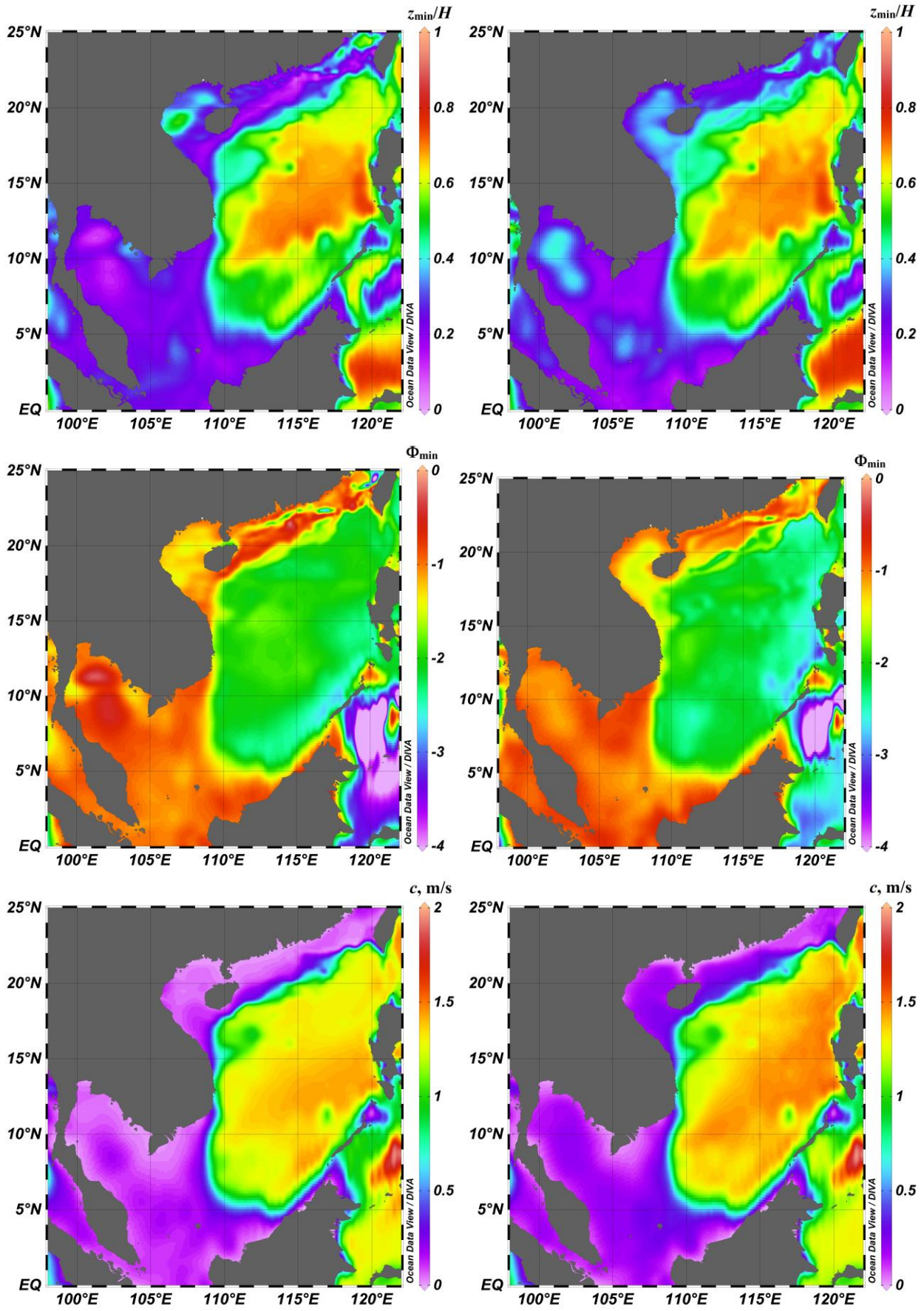
We very much appreciate the overall positive attitude of all referees to our manuscript and thank them for particularly useful comments. The comments, questions and suggestions of the referees are presented in italics.

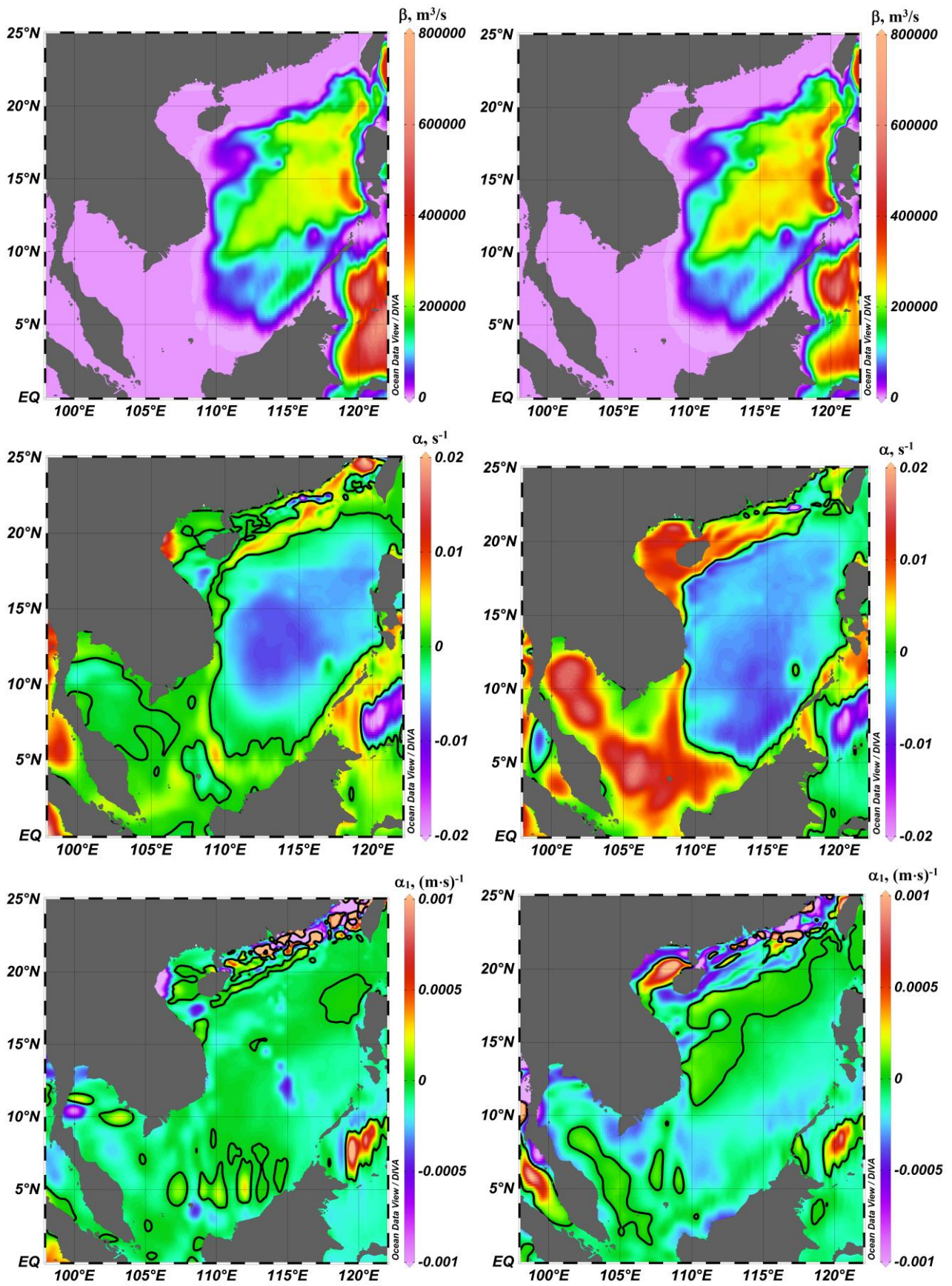
Referee #1

1. *"The authors examined the summer July conditions in the SCS, and I wonder if the authors have also looked into winter conditions?"*

During preparation of the manuscript we constructed maps of the coefficients and parameters of Gardner's equation for both January and July. These maps are mostly qualitatively and quantitatively similar to each other (except for the parameters α and α_1).







Thus, seasonal changes in these parameters are generally fairly small and/or do not have a clear pattern. As the manuscript is already quite long and contains many figures (as stressed also by Referee #2), we decided not to include the maps for winter conditions into the paper. However, we added short comments on seasonality of these parameters into the manuscript (on pages 11 and 20).

“Even though several properties of water masses of the South China Sea exhibit extensive seasonal variations, this feature not necessarily becomes evident in terms of kinematic parameters of internal waves of the second mode. The maps of quantities that express the normalised stratification conditions (z_{\max}/H , z_0/H , z_{\min}/H , Φ_{\min}) and the linear parameters c and β for January (not shown) qualitatively almost coincide with similar maps for July. The match is almost perfect in the deeper area of the basin. The largest quantitative differences (on the order of 20%) occur in shallow areas of this sea. However, both coefficients at the nonlinear terms of Gardner equation have substantial seasonal variations. The values of the coefficient α at the quadratic term change insignificantly from July to January in deeper areas but are instead of very small values in July quite large (around and above 0.01 s^{-1}) in shallow areas. The values of the coefficient α_1 at the cubic nonlinear term vary in a complicated manner between January and July”

2. " *Internal waves in the SCS are not excited by interactions of barotropic tides with the Kuroshio.*" Thank you for highlighting this issue. The wording is changed as follows: (page 1, 25)

"These powerful disturbances are usually excited by tide-topography interaction in the Luzon Strait where Kuroshio serves as a background current that may greatly modify the generating conditions. The resulting internal waves are further modified by numerous islands, seamounts and other bathymetric features in the Luzon Strait (Liu et al., 1998, 2004, 2006; Cai et al., 2002; Rump et al., 2004, 2015)."

3. *P.1 L.10: is 'release of storm surges' a type of 'strong atmospheric disturbances'?*

We mean that internal waves may be generated by storm surges also. We changed the sentence a little bit in order to make sure that we have in mind “indirect and/or delayed impact of such [strong atmospheric] disturbances (e.g., release of storm surges)“.

4. *P.3 L.34: while I admit that it is meaningful to construct such 2D spatial kinematic maps of internal waves in the SCS as the authors have done, I don't think it can be as 'urgently needed'.*

We agree this adjective is too insistent. Thus, we deleted it and say now that these maps are “useful”.

5. *P.4 L22 and elsewhere: Brunt–Väisälä frequency*

Thank you, this notion is correct.

6. *P.9 L6-12: I don't think it correct and necessary to have such a discussion here about the radiation from the sun; suggest remove it.*

We agree that this discussion is not really necessary in this paper, so omitted it and only mention in the revised version that spatial variations of the incoming radiation may have a certain impact on patterns of kinematic parameters of internal waves:

“Even though water depth is one of the most important factors governing the propagation speed of internal waves, stratification of water masses equally contributes to the properties of the propagation of internal waves. Its impact is apparently complemented by variations in the amount of incoming radiation from the Sun. These variations may be one of the reasons of the presence of the meridional pattern of the phase speed of internal waves of the second mode. This meridional pattern is well known for internal waves of the first mode (Talipova and Polukhin, 2001).”

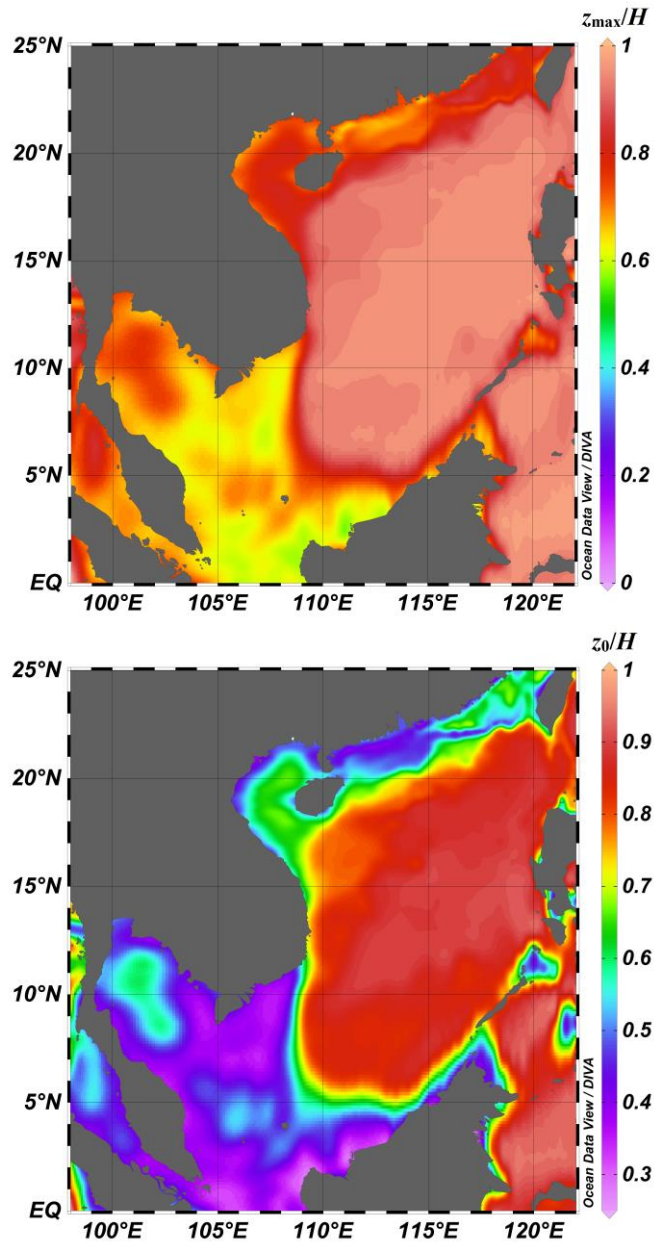
7. *P.12 L.25: 'Data availability' is not about the data that you used during your research, but it is about your own output data in the work*

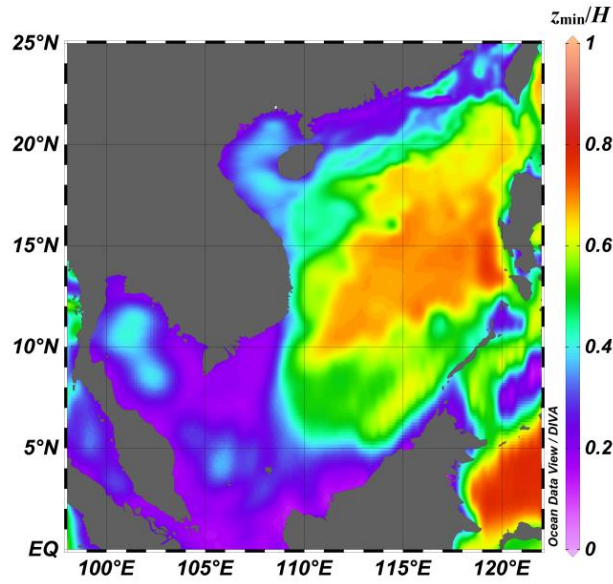
It is changed as follows:

“The derived maps of the parameters as well as underlying data for histograms and scatter plots may be obtained from the authors in digital form via requests by e-mail”

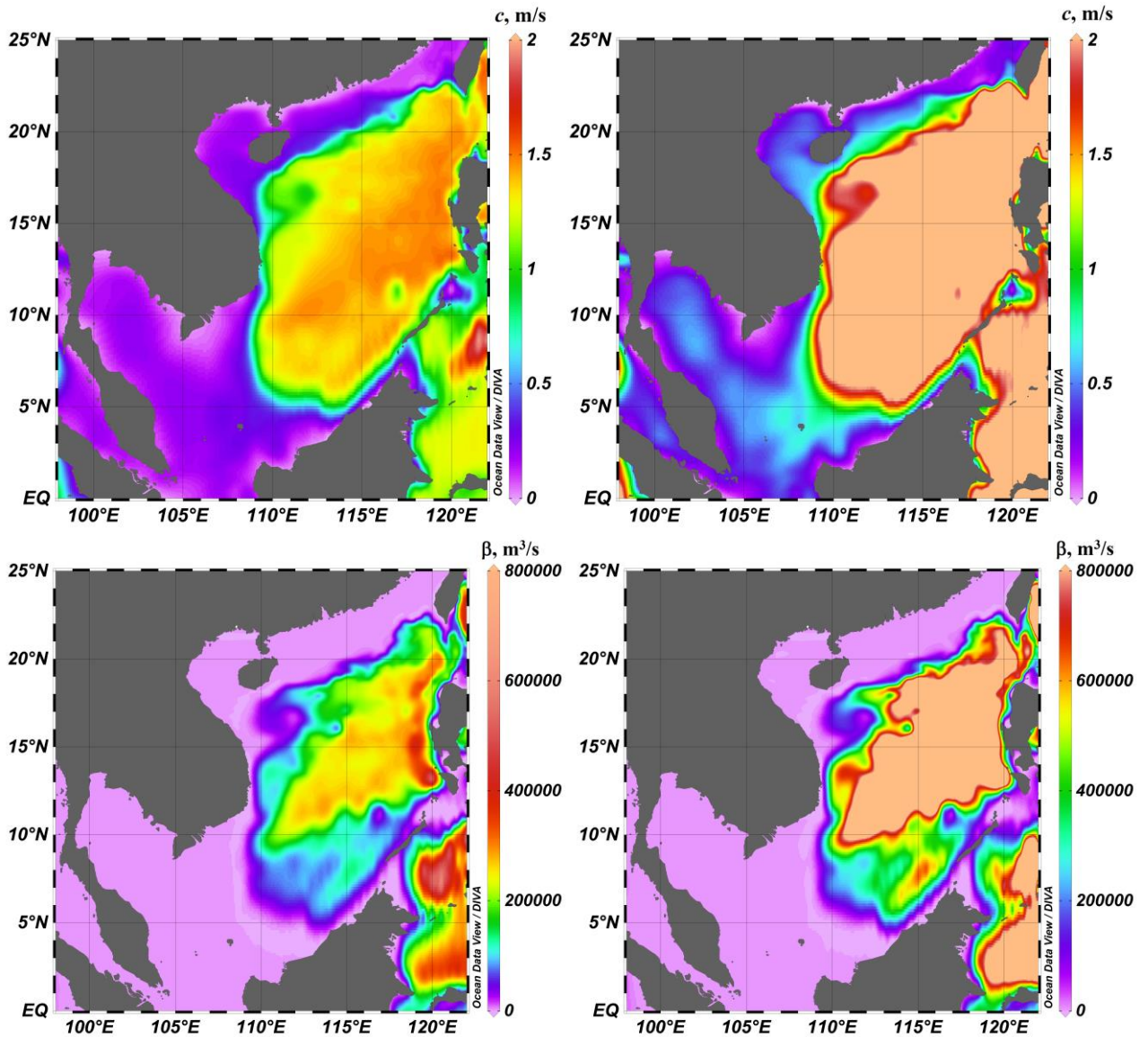
8. Figs. 6-8: please consider using the same colorbar scale in these three figures such that the readers can have a more direct comparison of the three different depths. This also applies to Figs. 11 & 13.

Figs. 6–8. Thank you; we have redrawn the images as recommended by the Referee. The scales have the same range (0,1). Note that they became less informative as fewer colors are used for each quantity due to the narrower range.



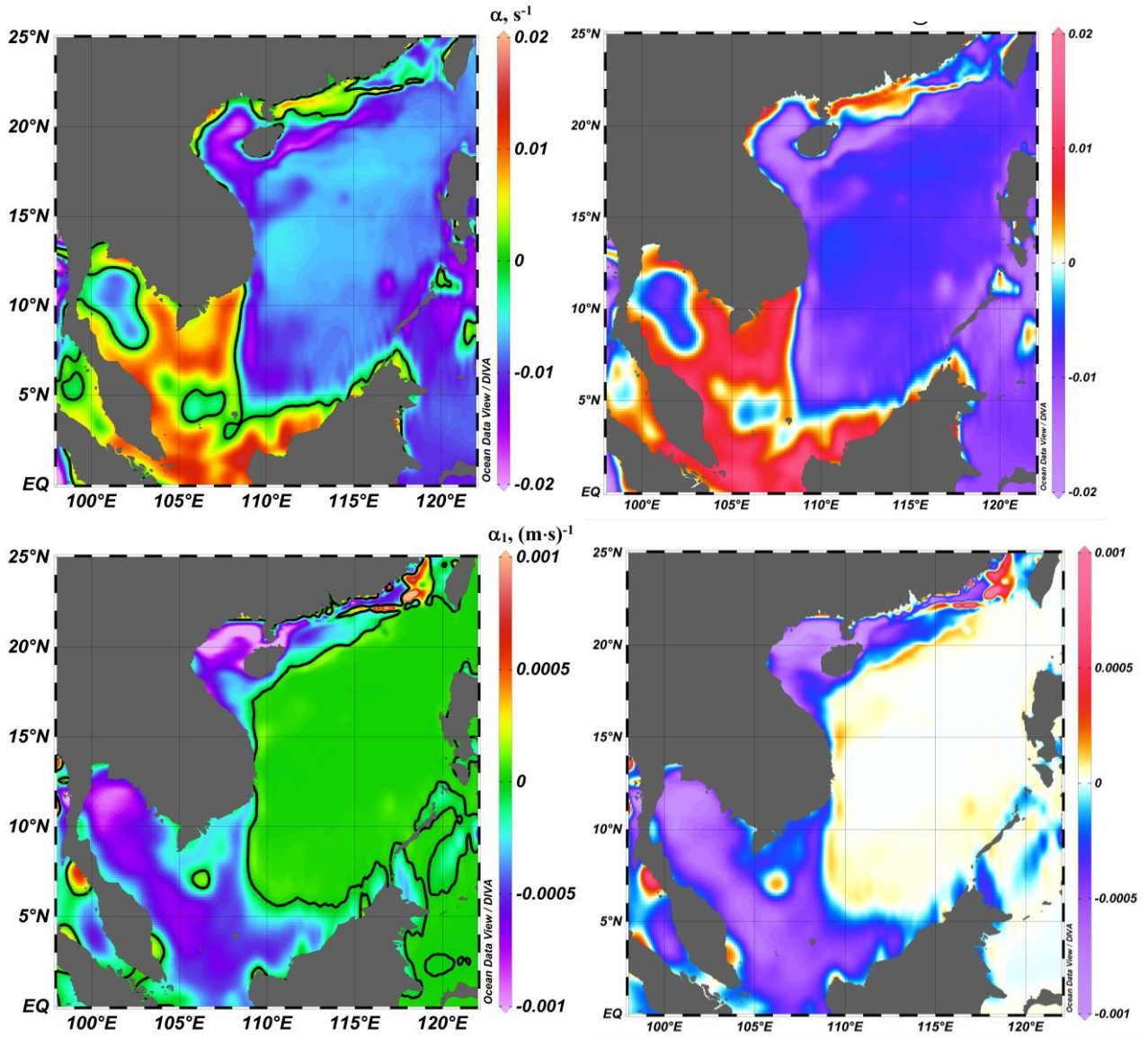


Figs. 11 & 13. The colorbar range is decreased for mode I (right column) to match the scale with the one used for mode II (left column).



9. Figs. 14 and 16: please consider using a white-centered colorbar for a better visualisation of positive and negative values.

Thank you for this suggestion. However, it was not easy for follow. See an example for mode I below, left column. It turned out that white-centered blue-red palette was less effective (having less colours) to present the necessary information. Such white-centered plots are given for comparison, see below, right column. Thus, we chose another way. Namely, for a better visualization of negative and positive values we added the zero contours to the maps of nonlinear parameters (Figs. 14 and 16).



Technical corrections

1) P.2 L.3: text correction: unnecessary word removed 2) P.2 L.5-6: sloppy; please reword: reworded as: **It is likely that higher modes of long internal waves are often generated in the World Ocean.** 3) P.3 L10: Carnes, 2009: Of course, thank you 4) P.6 L.20: quadratic term of Eq. (1)? Should be Eq. (1); thank you 5) P.7 L.19: Kurkina et al. (2017): Corrected 6) P.8L. 7: text correction: unnecessary letters removed 7) P.8 L. 12: text correction. unnecessary word removed 8) P.9 L.24&25: Fig. 13C: Thank you; corrected 9) P.11 L.24: ... solitons are strongly...: reworded as

“such solitary waves are strongly nonlinear“. 10) P.12 L.16: ...are qualitatively similar...: Reworded to make the claim unambiguous 11) Fig. 12 caption: with a power function (8): Thank you; corrected.

Referee #2

1. “The authors briefly discuss applicability of the weakly nonlinear model. But it is not very convincing. If nonlinear corrections to phase velocity reach 50%, it may change the result significantly.

Thank you; we just forgot to describe the estimate of the upper limit of wave amplitudes for which the Gardner equation is suitable in the South China Sea conditions. Thus, we added: “In the light of estimates of Maderich et al (2009, 2010), the presented relationships signal that the Gardner equation is suitable for the description and analysis of properties, propagation and dynamics of internal waves with the amplitude of up to 20 m in the South China Sea conditions.”

I do not understand the 20% estimate for both amplitudes and velocities of solitons: usually of them is taken empirically and the second is calculated based on that.

Sure, we deleted “velocities”

Also how nonlinear corrections to the mode structure affect the GE parameters?”

First of all, it concerns the coefficient at the cubic nonlinear term (Eq. 7). Without such a correction (e.g. within the two-layer model) this coefficient transforms into the expression obtained by Kakutani & Yamasaki, (1978)

$$\alpha_1 = -\frac{3c}{8h_1^2 h_2^2} (h_1^2 + h_2^2 + 6h_1 h_2), \text{ which is negative everywhere.}$$

For more complicate stratifications it may be positive, negative or vanish. Such variations are studied based on several examples of three-layer stratification in (Grimshaw et al, 1997; Kurkina et al., 2015). We feel that it is not really necessary to repeat their arguments and thus decided to add the following remark (P.5, L.20)

“The impact of stratification and mode correction on the value and sign of the coefficient at the cubic term in Gardner equation is analysed in detail in (Grimshaw et al, 1997; Kurkina et al., 2015).”

We also corrected a typo in Eq. (7).

2. “Even more important is that after all the calculations no single comparison with the observed internal waves is given. What kind of nonlinear waves was observed at the second mode? Is there anything more specific in the literature than just box 2 in Fig. 1? If so it would add a justification for the detailed mapping, and vice versa.”

We agree that observations of internal solitary waves of the second mode are scarce in the South China Sea; however, this is the general feature of many seas and oceans. However, we do not fully agree with the critics of Referee #2 as we have discussed examples of solitary waves of concave and convex type that have been observed in the Western South China Sea (Yang et al., 2009, 2010).

As there are, to our knowledge, no more descriptions of observations of this type in the international scientific literature, we are not able to expand this part of the manuscript.

The only one comparison what we can do is to visualize Gardner’s solitons with different amplitudes and coefficients that are calculated maximally close to the point of the above-mentioned observation. After that we may try to compare the shape of the Gardner soliton of the corresponding amplitude with the shape of the observed solitary waves. Such a comparison makes sense if there are simultaneous recordings of temperature and salinity (or density) profiles in the measurement area. The aim of our work was to establish certain average seasonal characteristics of the internal waves of

the second mode and a general analysis of their possible combinations that determine the type, shape, and velocity of localized waves.

3. *“For the deep parts of the SCS: what should be the wavelength of the IW to fit the long-wave approximation? Are the observed waves long enough for that?”*

An internal wave can actually be considered as a long wave when the relation $\beta k^2 \ll c$, which implicitly depends on the sea water density stratification and includes dispersive coefficient β and long linear internal wave phase speed c , is satisfied. Here $k = 2\pi/\lambda$ is the characteristic wavenumber and λ is the characteristic length scale. (In the opposite case the waves are of intermediate length or short waves).

This condition can be much more gentle than just $H \ll \lambda$. For example, solitary waves of the second mode were observed in the shelf region of the South China Sea with the depth of about 300 m (Yang et al., 2009, 2010). The dispersion coefficient there is about $1500 \text{ m}^3/\text{s}$ and the speed of propagation is about 0.5 m/s (Fig.12a). Therefore, waves longer than 350 m can be already considered as long waves in this region. The length of internal solitary wave of the second mode detected in (Yang et al, 2009) is about 350 m and this wave, consequently, can be treated as a long wave.

In deeper parts of the South China Sea internal waves can propagate either as a practically linear (sinusoidal) disturbances or as a steepening baroclinic tide, predominantly of the first mode. There may also exist reflected localized disturbances of the second mode generated on the unevenness of the bottom from the waves of the first mode. When such waves propagate in an inhomogeneous medium, they will undergo slow adiabatic changes or faster transformations. When they propagate into the region of increasing depth, their amplitudes will decrease and their lengths will increase, so they still can be considered as long waves.

As this material is, in essence, classic, we do not feel necessary to reflect it in the manuscript.

4. *“Sorry if I missed that but what stratifications were used for calculation and mapping? It is mentioned about two pycnoclines but only a simple model is shown in Figure 3 (so only the total depth was varied according to the bathymetry?)”*

We used averaged stratifications from GDEM climatology, from which we numerically evaluate the local stratification. We make this clear in the revised version already in the abstract. Fig. 3 is just schematic one to show the types of polarity of second-mode internal waves.

5. *“If alpha is mostly negative, and alpha1 is also negative, what kind of solitons can exist in this area? There is no flat-top solitons in this case. 6. The paper text is short but it is overloaded by figures. In my opinion, figures like 6-10 which show intermediate values are not necessary.”*

Based on the weakly nonlinear theory (Gardner’s equation), if α_1 is negative, the solitary wave may change their amplitude from 0 to the limiting value $A_{\text{lim}} = \alpha/\alpha_1$. The polarity of such solitary wave depends on the sign of the quadratic nonlinear term expressed by α . A solitary wave with an amplitude close to the limiting amplitude is has a shape of the “thick” or “table-top” solitary wave. If $\alpha < 0$, a table-top solitary wave of depression may exist (Pelinovsky et al., 2007).

As for figures, we are in a complicated position because Referee #1 wishes to see some additional images. We feel that Figures 6–10 are still important as they present some flavor of the physical structure of water masses in the study area and carry important information about the frequency of occurrence of the relevant normalized background conditions.

Minor notes: *“solitary wave that interact elastically” -so it is a priori weak, integrable nonlinearity in a 100 m wave?*

This remark is deleted.

How do you know? “highly energetic [?] internal waves of higher modes” -What do you mean by that?

We deleted the words “highly energetic”.

“The coefficients at the quadratic and cubic terms of Gardner equation for internal waves of the second mode are practically independent of water depth.” - How can? Probably you mean the case of a deep lower layer? “are qualitative similar” -better “qualitatively” (this is about the only typo I noticed).

The text is changed as follows: “The coefficients at the quadratic and cubic terms of Gardner’s equation for internal waves of the second mode mainly depend on the stratification and much less on the total water depth.” Also, the typo has been corrected.

Why “Vaisala” rather than “Brunt-Vaisala?”

Replaced to “Brunt-Väisälä” as also recommended by Referee #1.

Referee #3

1. In the Introduction it is stated that "These powerful disturbances are usually excited by interactions of barotropic tidal waves with the Kuroshio Current..." (Minor comment: 'excited' is probably better replaced with 'affected'). This statement seems to be in a direct contradiction with "The field of large-scale currents was ignored" on p. 7. Indeed, the modal equations on p. 4 and 5, and the coefficients of the Gardner equation on p.5 are calculated under the assumption that there is no background shear flow. However, the presence of the flow will change the very parameters calculated and analysed in the paper. Thus, the authors are asked to justify ignoring the currents.

Thank you for highlighting this issue. The wording is changed as follows: (page 1, 25)

"These powerful disturbances are usually excited by tide-topography interaction in the Luzon Strait where Kuroshio serves as a background current that may greatly modify the generating conditions. The resulting internal waves are further modified by numerous islands, seamounts and other bathymetric features in the Luzon Strait (Liu et al., 1998, 2004, 2006; Cai et al., 2002; Rump et al., 2004, 2015)."

"These powerful disturbances are usually excited by tide-topography interaction in the Luzon Strait, and Kuroshio can serve as a background current. They are further modified by numerous islands, seamounts and other bathymetric features in the Luzon Strait (Liu et al., 1998, 2004, 2006; Cai et al., 2002; Rump et al., 2004, 2015)."

We do agree that the Kuroshio Current may affect the wave generation, but it does not explicitly affect the coefficients of the model in the South China Sea. We have added the relevant comment into the text and commented this issue also at the end of the body text.

2. In the discussion of the applicability of the Gardner equation for long internal waves in the South China Sea (section 3.3) the authors provide estimates for the terms in the bracket of the Gardner equation (1). This discussion seems to be incomplete. It would be useful to add estimates (or at least a discussion) for (a) the nonlinear and dispersive terms in (1), (b) the fifth and nonlinear dispersive terms which appear in the derivation of the higher-order KdV equation, but are neglected in this study. The authors are asked to clarify these points.

Gardner’s equation is derived under the assumption that the coefficient at its quadratic term may vanish and change sign. When this coefficient $\alpha = 0$, the cubic nonlinear term is the main nonlinear term and the equation, formally, transforms into the mKdV equation. When this coefficient tends to zero but does not vanish yet, one can write $\alpha = \varepsilon\chi$, where ε is a small parameter. The transformation $X = \sqrt{\varepsilon}x$ $T = \varepsilon\sqrt{\varepsilon}t$ converts then the second order asymptotic equation

$\frac{\partial \eta}{\partial t} + \alpha \eta \frac{\partial \eta}{\partial x} + \beta \frac{\partial^3 \eta}{\partial x^3} + \varepsilon \left(\alpha_1 \eta^2 \frac{\partial \eta}{\partial x} + \gamma_1 \eta \frac{\partial^3 \eta}{\partial x^3} + \gamma_2 \frac{\partial \eta}{\partial x} \frac{\partial^2 \eta}{\partial x^2} + \beta_1 \frac{\partial^5 \eta}{\partial x^5} \right) = 0$, where the cubic term is in the second order, into the equation

$$\frac{\partial \eta}{\partial T} + (\chi \eta + \alpha_1 \eta^2) \frac{\partial \eta}{\partial X} + \beta \frac{\partial^3 \eta}{\partial X^3} + \varepsilon \left(\gamma_1 \eta \frac{\partial^3 \eta}{\partial X^3} + \gamma_2 \frac{\partial \eta}{\partial X} \frac{\partial^2 \eta}{\partial X^2} \right) + \varepsilon^2 \beta_1 \frac{\partial^5 \eta}{\partial X^5} = 0.$$

The quadratic and cubic terms are in the same order in this framework and the other terms are in the next order.

As this procedure is widely used in the theory of weakly nonlinear waves, we do not feel necessary to comment it in the manuscript. A detailed discussion of this procedure and implications can be found in (Pelinovsky E.N., Slunyaev A.V., Polukhina O.E., Talipova T.G. Internal Solitary Waves. In: *Solitary Waves in Fluids* (ed. by R.Grimshaw), WIT Press, Southampton, Boston, 2007, 85–110). We included a reference to this source and tell now: “The case when both nonlinear terms are small is discussed in detail by Pelinovsky et al. (2007).”

3. On p. 3 it is stated that "This feature makes it possible to use these models to isolate and identify principally new features of the dynamics of internal waves even if some details of the system are not reproduced..." The authors are asked to expand this discussion and briefly describe the main advantages and disadvantages of using the weakly nonlinear models of this type, rather than just referring to the literature.

We add the following paragraph:

“For example, a new kind of quasi-steady nonlinear internal waves (so-called breathers) has been predicted using the framework of Gardner’s equation. The possibility of generation of such phenomena by solitary waves of the second mode and the basic properties of its long-term propagation have been obtained in a numerical “wave tank” using Euler’s equations (Lamb et al., 2007; Terletska et al., 2016). Several features of the process of generation of table-top solitary waves were also extracted based on Gardner’s equation (Kurkina et al., 2016). The effect of a change in the polarity of solitary waves predicted by the asymptotic theory has been repeatedly observed in various areas including the South China Sea. It is however inevitable that many specific features and details (e.g. radiation of short waves, properties of strongly nonlinear disturbances or breaking of solitonic structures) cannot be reproduced using equations for weakly nonlinear waves and specific configurations of stratification may require the use of higher-order analysis and equations.”

4. On p. 10 it is stated that "Gardner equation is not applicable in locations where the coefficients at the quadratic term vanishes and one has to employ a modified KdV equation..." This is not clear to me. Gardner equation becomes the mKdV in this case, so, what is meant here?

The text is changed as follows: “Gardner’s equation transforms into the modified KdV equation in locations where the coefficient at the quadratic term vanishes and one has to use this equation in order to properly describe weakly nonlinear dynamics of internal waves in such regions.”

Technical corrections

1. A footnote with the web link to GDEM database would be useful to readers.

We inserted it into the body text:

<https://data.nodc.noaa.gov/cgi-bin/iso?id=gov.noaa.nodc:9600094>

2. p. 1, "...solitons (solitary waves that interact elastically)" The comment in the bracket

is not relevant in the context of this study, remove.

It is deleted as recommended also by Referee #2

3. p. 5, "... are invariant with respect to the particular choice of z^ ..." is better replaced with "... do not depend on the particular choice of z^* ..."*

Yes, this is easier to understand for many readers

4. Figure 4, caption is unclear. Please, check.

Thank you; we reformulated the caption. Also, we unified description of the axes and labels for the two panels of Fig. 4.

5. The list of references is too long for the size of the paper.

We are again in an intricate position as other referees implicitly wished to see even more references. Due to the revision we had to add some references. However, we deleted several sources that are not particularly critical for this manuscript: (Ramp et al., 2004; Talipova et al., 1998; Talipova and Pelinovsky, 2013).

Kinematic parameters of internal waves of the second mode in the South China Sea

Oxana Kurkina¹, Tatyana Talipova^{1,2}, Tarmo Soomere^{3,4}, Ayrat Giniyatullin¹, Andrey Kurkin¹

¹Nizhny Novgorod State Technical University n.a. R.E. Alekseev, Nizhny Novgorod, 603950 Russia

5 ²Institute of Applied Physics, Nizhny Novgorod, 603950 Russia

³Department of Cybernetics, School of Science, Tallinn University of Technology, Tallinn, 12618 Estonia

⁴Estonian Academy of Sciences, Kohtu 6, Tallinn, 10130 Estonia

Correspondence to: Andrey Kurkin (aakurkin@gmail.com)

10 **Abstract.** Spatial distributions of the main properties of the mode function and kinematic and nonlinear parameters of
internal waves of the second mode are derived for the South China Sea for typical summer conditions in July. The
calculations are based on the Generalized Digital Environmental Model (GDEM) climatology of hydrological variables,
from which the local stratification is evaluated. The focus is on the phase speed of long internal waves and the coefficients at
the dispersive, quadratic and cubic terms of the weakly nonlinear Gardner model. Spatial distributions of these parameters,
15 except for the coefficient at the cubic term, are qualitatively similar for waves of both modes. The dispersive term of
Gardner's equation and phase speed for internal waves of the second mode are about a quarter and half, respectively, of
those for waves of the first mode. Similarly to the waves of the first mode, the coefficients at the quadratic and cubic terms
of Gardner's equation are practically independent of water depth. In contrast to the waves of the first mode, for waves of the
second mode the quadratic term is mostly negative. The results can serve as a basis for express estimates of the expected
20 parameters of internal waves for the South China Sea.

Keywords: Internal waves, Long waves, Solitary waves, Gardner's equation, South China Sea

1 Introduction

The South China Sea is an example of shelf seas where highly energetic internal solitary waves often generate up to 100–
25 200 m vertical displacements of water masses. These powerful disturbances are usually excited by tide-topography
interaction in the Luzon Strait where the Kuroshio Current serves as a background current that may greatly modify the
generating conditions but it does not affect the coefficients of the Gardner model in the South China Sea. The resulting
internal waves are further modified by numerous islands, seamounts and other bathymetric features in the Luzon Strait (Liu
et al., 1998, 2004, 2006; Cai et al., 2002; Rump et al., 2004, 2015). Many such structures with amplitudes up to 100 m
30 propagate as solitary waves. Their impact on water masses has been observed in the vicinity of two underwater elevations in

an area of the Luzon Strait where the water depth is only about 300 m (Liu et al. 2006). These waves propagate into deeper regions of the South China Sea, cross this water body and exert conspicuous transformations along the continental shelf at depths of 400–200 m. The associated displacements of isopycnals may reach 100 m. The appearance of such waves often matches well theoretical shapes of internal solitons (Klymak et al., 2006).

5 While most such waves represent internal waves of the first mode, numerous recordings suggest that internal waves of the second and sometimes even third mode are regularly present in the South China Sea (Fig. 1; see also Guo et al., 2006; Yang et al., 2009; Vlasenko et al., 2010; Liu et al., 2013). **It is likely that higher modes of long internal waves are often generated in the World Ocean. They are frequently excited, for example, as result of interaction of nonlinear waves of the first mode with topography** (Ramp et al., 2010, 2015; Shroyer et al., 2010; Vlasenko et al., 2010, 2014; Vlasenko and Stashchuk, 2015).

10 Alternatively, internal waves of any mode may be created in micro-tidal stratified semi-sheltered basins by an intense outflow or inflow (Vlasenko et al., 2009), strong atmospheric disturbances (Ivanov et al., 1987), **indirect and/or delayed impact of such disturbances (e.g., release of storm surges) and** other phenomena.

Most of studies of internal waves focus on waves of the first mode. This approach apparently mirrors the abundance of records of various properties of water masses in the uppermost layers of the ocean compared to profiles of the entire water column. Namely, profiles of motions and other hydrophysical properties of the upper sections of water masses usually do not provide enough information about the full vertical structure of internal waves. Separation of the internal wave field into components representing different modes is extremely complicated in the vicinity of their generation regions and in areas where the waves interact with one another and with the bottom. Such analysis, however, is feasible in regions remote from the generation and interaction areas because small-amplitude internal waves of different modes propagate with different velocities and become separated after some time.

20 Solitary internal waves of the first mode may be waves of elevation or waves of depression. The structure of higher-mode internal solitary waves is more complicated (Fig. 2). For example, vertical displacements of the upper and lower jump layers created by an internal solitary wave of the second mode have different polarities. For this reason the notion of internal waves is based on certain topologic features of the instantaneous appearance of the intermediate layer. Waves that create convex modifications of this layer are said to have positive polarity. Such waves are called convex or positive waves in what follows. Waves that create a concave shape of the intermediate layer are said to have negative polarity and are called concave or negative waves.

25 Internal solitary waves of the second mode with both polarities have been regularly observed on the north-western continental shelf of the South China Sea (Yang et al., 2010; Ramp et al., 2015). Such waves may be generated during interactions of solitary waves of the first mode with various bathymetric features (Vlasenko and Hutter, 2001). Positive (convex) solitary waves of this kind appear substantially (by about 20 times) more frequently in the records than negative (concave) waves (Yang et al., 2010).

The dynamics of long internal waves of the second mode can be described with reasonable accuracy using weakly nonlinear evolution equations of the Korteweg–de Vries (KdV) family. In particular, Gardner’s equation is commonly used as the

classic model of internal waves of the first mode (Holloway et al., 1999; Grimshaw et al., 2004; [Talipova and Pelinovsky, 2013](#); Talipova et al., 2014, 2015). This model has been applied *inter alia* to explain and replicate a polarity switch of internal solitons propagating along the north-eastern continental shelf in the South China Sea (Liu et al., 1998; Orr and Mingerey, 2003; Zhao et al., 2004; Grimshaw et al., 2010).

5 The models of this kind are correct only asymptotically. Their core advantage is that a small set of parameters governs the appearance and properties of internal solitary waves. This feature makes it possible to use these models to isolate and identify principally new features of the dynamics of internal waves even if some details of the system are not reproduced. For example, a new kind of quasi-steady nonlinear internal waves (so-called breathers) has been predicted using the framework of Gardner's equation. The possibility of generation of such phenomena by solitary waves of the second mode and the basic properties of its long-term propagation have been obtained in a numerical "wave tank" using Euler's equations (Lamb et al., 2007; Terletska et al., 2016). Several features of the process of generation of table-top solitary waves were also extracted based on Gardner's equation (Kurkina et al., 2016). The effect of a change in the polarity of solitary waves predicted by the asymptotic theory has been repeatedly observed in various areas including the South China Sea (see above). It is however inevitable that many specific features and details (e.g. radiation of short waves, properties of strongly nonlinear disturbances or breaking of solitonic structures) cannot be reproduced using equations for weakly nonlinear waves and specific configurations of stratification may require the use of higher-order analysis and equations.

15 The parameters selected for the model have a significant effect on many features of internal solitary waves. In other words, the appearance and core qualities of the propagation and transformation of such waves are governed by spatial variations in the coefficients of Gardner's equation along the propagation path of the waves in question. The associated variations have been thoroughly studied for internal solitary waves of the first mode using common data bases of the vertical structure of temperature and salinity (Levitus, 1982; Carnes, 2009). This approach made it possible to construct climatologically valid maps of spatio-temporal variations in various coefficients of Gardner's equation for internal waves of the first mode in different regions of the World Ocean. These maps depict the values of phase speed of long waves (also called wave speed because for long waves it is also equal to group speed) and coefficients of various terms (linear, quadratic and cubic term) in the relevant Gardner's equation (Pelinovsky et al., 1995; [Talipova et al., 1998](#); Talipova and Polukhin, 2001; Polukhin et al., 2003, 2004; Kurkina et al., 2011, 2017). Similar maps have been also calculated for the South China Sea (Grimshaw et al., 2010; Liao et al., 2014).

25 As many regions of the World Ocean support propagation of internal waves of higher modes, it is important to expand this kind of 'climatology' of internal wave propagation regimes to cover, to a first approximation, the properties of large-amplitude internal waves of the second mode. Such maps of the kinematic parameters (wave speed and the coefficient at the linear term) and coefficients at the nonlinear terms of the relevant evolution equation make it possible to rapidly evaluate several core properties of the dynamics and impact of internal waves, build pathways of the propagation of waves from their typical areas of generation and identify which regions are possibly affected by hydrodynamic loads created by large internal waves.

For example, the polarity of solitons is governed by the sign of the coefficient at the quadratic term of Gardner's equation (Grimshaw et al., 2007). The values of this coefficient as well as other kinematic parameters of waves can be calculated in a straightforward manner from the so-called mode function and its derivatives. The lines where the coefficient at the quadratic term vanishes or changes its sign mark the regions of a switch of the polarity of internal solitons. This switch may be accompanied by radical changes in the further behaviour of waves or the region may even be a location of the onset of wave breaking. This feature is valid for solitons of the first and second modes. Similar maps of the values of the coefficient at the cubic term specify, e.g., the regions where modulational instability of internal wave trains may modify wave properties or where a specific type of solitons – internal breather – may exist (Talipova et al, 2011).

This paper focuses on the construction of maps of phase speed and coefficients at various terms of Gardner's equation. These quantities are often called kinematic and nonlinear parameters of long internal waves of the second mode. The target area is the South China Sea where such maps are **useful** to better evaluate the core properties of internal waves and their propagation. We start with a short description of the setup of the problem of internal wave propagation. An asymptotic solution to this problem can be provided by an evolution equation for such internal waves – Gardner's equation. To properly evaluate the values of its coefficients that govern the appearance and dynamics of internal waves of the second mode, it is necessary to adequately describe the structure of the mode function. A relevant nonlinear correction to this function is derived using an asymptotic procedure, which is discussed in Section 2 together with the main features of the appearance of internal solitary waves of the second mode. Section 3 describes the resulting maps of phase speed and various coefficients at the nonlinear terms of the Gardner model for internal waves of the second mode and the applicability of the entire model for the conditions of the continental shelf of the South China Sea. The main conclusions of the study are formulated in Section 4.

2 Vertical structure of long internal waves of the second mode

Similarly to the treatment of internal waves of the first mode, the dynamics of long internal waves of the second mode in the ocean can be adequately described using a classic evolution equation – Gardner's equation (Holloway et al, 1999; Grimshaw et al, 2004, 2007). This model equation, presented here in the nondimensional form:

$$\frac{\partial \eta}{\partial t} + (c + \alpha \eta + \alpha_1 \eta^2) \frac{\partial \eta}{\partial x} + \beta \frac{\partial^3 \eta}{\partial x^3} = 0, \quad (1)$$

is valid for internal waves of any mode. Here x denotes distance along the propagation direction of the wave, t is time, η is the vertical deviation of the isopycnals from their equilibrium position at a selected vertical location z^* , c is the phase speed of internal waves, α and α_1 are the coefficients at the quadratic and cubic nonlinear terms, respectively (sometimes also called the quadratic and cubic nonlinear parameters), and β is the coefficient at the linear dispersive term (often called the dispersion coefficient). The quantities c , α , α_1 , and β represent the major kinematic characteristics of the internal wave field.

The mode function Φ is an eigenfunction of the Sturm–Liouville problem:

$$\frac{d^2\Phi}{dz^2} + \frac{N^2(z)}{c^2}\Phi = 0, \quad (2)$$

where $N(z)$ is the buoyancy (**Brunt–Väisälä** frequency) frequency. This frequency depends on the local stratification and is defined as follows:

$$5 \quad N^2(z) = -\frac{g}{\rho(z)} \frac{d\rho(z)}{dz}, \quad (3)$$

where g is acceleration due to gravity, $\rho(z)$ is the undisturbed density profile, and H is the total water depth. The boundary conditions for Eq. (3) usually include the requirement of the vanishing of Φ at the bottom and at the sea surface. We chose the common approximation of the so-called rigid lid at the surface, for which these conditions reduce to $\Phi(0) = \Phi(H) = 0$.

The phase speed c of long internal waves is an eigenvalue of the described Sturm–Liouville problem. The vertical location z^* is, theoretically, arbitrary but the resulting numerical values of the coefficients of Gardner’s equation (1) obviously depend on the choice of z^* .

We follow the tradition to select z^* at the location z_{\max} , which corresponds to the maximum value Φ_{\max} of the mode function Φ (Holloway et al., 1999). This function is normalised as $\Phi(z^*) = 1$. Details of the spatio-temporal structure of internal waves are described in this model as

$$15 \quad \zeta(x, z, t) = \eta(x, t)\Phi(z) + \eta^2 F(z). \quad (4)$$

Here $F(z)$ has the meaning of a second-order nonlinear correction to the mode function. It is defined as a solution of the following inhomogeneous boundary problem:

$$\frac{d^2F}{dz^2} + \frac{N^2}{c^2}F = -\frac{\alpha}{c} \frac{d^2\Phi}{dz^2} + \frac{3}{2} \frac{d}{dz} \left[\left(\frac{d\Phi}{dz} \right)^2 \right], \quad F(0) = F(H) = 0. \quad (5)$$

A unique solution for Eq. (5) can be obtained using an additional normalising condition $F(z^*) = 0$. Even though the location z^* can be chosen arbitrarily, the resulting vertical structure of motions and displacements of different water parcels **do not depend on** the particular choice of z^* (Holloway et al., 1999, 2001). The coefficients of Eq. (1) can be expressed explicitly for any stratification in terms of the mode function, its derivatives and integrals:

$$\beta = \frac{c}{2D} \int_0^H \Phi^2 dz, \quad \alpha = \frac{3c}{2D} \int_0^H \left(\frac{d\Phi}{dz} \right)^3 dz, \quad D = \int_0^H \left(\frac{d\Phi}{dz} \right)^2 dz, \quad (6)$$

$$\alpha_1 = \frac{1}{2D} \int_0^H dz \left\{ 9c \frac{dF}{dz} \left(\frac{d\Phi}{dz} \right)^2 - 6c \left(\frac{d\Phi}{dz} \right)^4 + 5\alpha \left(\frac{d\Phi}{dz} \right)^3 - 4\alpha \frac{dF}{dz} \frac{d\Phi}{dz} - \frac{\alpha^2}{c} \left(\frac{d\Phi}{dz} \right)^2 \right\}. \quad (7)$$

The impact of stratification and mode correction on the value and sign of the coefficient at the cubic term in Gardner's equation is analysed in detail in (Grimshaw et al, 1997; Kurkina et al., 2015). Consequently, for the specifying of the coefficients of Gardner's equation it is necessary to evaluate the mode function from Eq. (2) and its nonlinear correction from Eq. (5).

5 The vertical structure of internal waves of the second mode is more complicated than the same structure for the classic internal waves of the first mode. The core difference between these structures can be illustrated on the example of a simple model of quasi-two-layer stratification (Fig. 3a). The water masses described by such a model have one jump layer of density. The Brunt–Väisälä frequency (Fig. 3b) has one maximum along each vertical cross-section. The maximum is located in the region of the fastest variation in density. Similarly, the mode function for the waves of the first mode has one
10 extremum (maximum or minimum depending on the normalisation) along each vertical cross-section. Importantly, the mode function for the waves of the first mode exhibits no sign change within the entire water column.

In contrast, the mode function for the waves of the second mode changes its sign. It has the maximum positive value near the upper boundary of the jump layer and the minimum (negative) value near the lower boundary of the jump layer (Fig. 4a). This means that two more intrinsic quantities are present in the system: the locations of zero-crossing z_0 and minimum z_{\min} of
15 the mode function. If some function Φ satisfies Eq. (2) with $\Phi(0) = \Phi(H) = 0$, the function $-\Phi$ is also a valid solution to this boundary problem. Therefore, it is not clear beforehand whether z_{\max} or z_{\min} should be chosen to normalise the mode function and to specify the unique mode function from the family described by Eq. (2) and the relevant boundary conditions.

There are different approaches in the literature. Liu and Wang (2012) rely on the values of the mode function at its minimum z_{\min} , where the absolute value of Φ is usually the largest. This approach, in essence, follows the logic of addressing the
20 dynamics of internal waves of the first mode where the absolute maximum of the mode function is chosen as the scale for the normalisation of this function.

Other recent studies of internal solitons of the second mode in the South China Sea address the situation on the continental shelf where the largest absolute values of Φ are located at z_{\max} relatively close to the sea surface (Yang et al, 2009, 2010). In such situations it is natural to choose the maximum of Φ in a location above the jump layer (main pycnocline) as the basis
25 for normalisation. The quality and resolution of measurements above the main pycnocline are often better than in deeper layers and thus the vertical structure of the mode function is more reliably represented.

In such environments it is convenient to adjust Gardner's equation so that it describes the deviations of the isopycnals that correspond to $z^* = z_{\max}$. Similarly to the analysis of internal waves of the first mode, the entire mode function Φ is then normalised so that the global maximum of its absolute values is 1. Also, in this case the zero-crossing point of the nonlinear
30 correction F (Eq. (5)) is linked to z_{\max} . In this framework the function η expresses deviations of the isopycnal $\zeta(x, z, t)$ in Eq. (4) at $z = z_{\max}$ from its undisturbed location.

Importantly, with this choice of normalisation the polarity of the internal solitons of the second mode matches the sign of the coefficient at the quadratic term of Eq. (1). In other words, positive (convex) solitons correspond to positive values of the coefficient α . This match follows the usual interpretation of the coefficients and the appearance of solutions of the family of

generalisations of the KdV equation. This choice, however, may be problematic in the analysis of wave motions of deeper parts of the World Ocean and the South China Sea. The problem becomes evident when both the seasonal and the main pycnocline are located relatively close to the surface. In such cases the absolute value $|\Phi(z_{\min})|$ may by several times exceed the maximum of the mode function $\Phi(z_{\max})$. Consequently, the largest negative values of the normalised mode function may reach values well beyond -1 .

This feature may lead to certain problems in the analysis of the dynamics of internal waves of this kind. However, the normalisation is, in essence, arbitrary and the vertical structure of motions is independent of the chosen normalisation. Therefore, the relevant issues are purely technical and do not impact on the results of the analysis. Thus, we decided to meet the possible technical implications but still follow the more logical and straightforward normalisation using the maximum of the absolute values of the mode function at the upper boundary of the jump layer.

3 Kinematic parameters of long internal waves of the second mode

The South China Sea is a large (surface area about 3.5 million km²) semi-sheltered water body bordered by China from the north, Vietnam and Cambodia from the west and the Philippines from the south-east (Fig. 5a). The water depth of this sea varies greatly (Fig. 5b). About half of the sea is located on the continental shelf and has water depths just a few 100's of metres while another half has depths comparable with those of the open ocean. This variability together with extensive variations in the hydrological fields in this sea gives rise to large spatial variations in the coefficients of the underlying nonlinear evolution equations and, consequently in the kinematic parameters of internal waves in the area.

To construct spatial maps of these parameters, we followed the approach implemented for the calculation of similar parameters of internal waves of the first mode and the coefficients of Gardner's equation for this basin (Grimshaw et al., 2010; Liao et al., 2014). We employed generalised climatologic information about long-term mean temperature and salinity profiles. This information was extracted from the Generalized Digital Environment Model (GDEM) (Teague et al., 1990; Carnes et al., 2009). The GDEM <https://data.nodc.noaa.gov/cgi-bin/iso?id=gov.noaa.nodc:9600094> provides coefficients of mathematical expressions describing the vertical profiles of temperature and salinity with a horizontal resolution ranging from 30' in the deep ocean to 10' in selected coastal regions (incl. the South China Sea) at 77 vertical levels. The relevant database integrates over three million observations since 1975.

The maps in this paper were calculated for the stratification that is characteristic in July. **Seasonal variations in these maps are discussed shortly at the end of Section 3.2. The field of large-scale currents was ignored because there is no detailed information about the currents in this area in the existing databases. We stress that both large-scale currents and mesoscale structures may considerably affect the local stratification and greatly impact the values of coefficients of Gardner's equation. However, their impact is highly variable in space and time and it is likely that it becomes evident via limited variations of the seasonal values of the coefficients in question.**

Mean density profiles were computed for each horizontal pixel of the GDEM database from temperature and salinity profiles using the International Equation for State of Sea Water (Fofonoff and Millard, 1983). With these density profiles, we evaluated the mode function $\Phi(z)$ for the second mode as the normalised eigenfunction of the boundary problem (2) similarly to the procedure employed in Kurkina et al. (2017). The field of large-scale currents was ignored. The eigenvalue problem (2) was solved numerically at each pixel of the GDEM for the first and the second eigenvalue c (phase speed of long linear internal waves of the first and second vertical mode) and for the first and second eigenfunction $\Phi(z)$ (vertical structure of the wave). Further, the boundary-value problem (5) for the nonlinear correction $F(z)$ was solved numerically by the method of variation of parameters. Finally, the coefficients at the linear, quadratic and cubic nonlinear terms were evaluated from Eqs. (6,7).

10 3.1 Spatial variations in the parameters of the mode function

As described above, the calculations of various parameters and coefficients rely on the values of maxima z_{\max} , minima z_{\min} and zero-crossings z_0 of the mode function (Fig. 4a). Figures 6–8 present spatial distributions of these quantities (normalised against the total depth of the sea) and frequency histograms of the occurrence of their different values.

A large part of the values of z_{\max}/H are concentrated around $z_{\max}/H = 0.97$ (Fig. 6b). This relatively wide peak in the histogram indicates that in a substantial part of the sea the location of the maximum of the mode function is found relatively close to the sea surface. The pixels with such values evidently belong to the deep-water region of the study area. Another, minor and narrow peak is located at $z_{\max}/H = 0.75$. This peak apparently reflects a more or less horizontal sub-region of the sea on the continental shelf. The histogram of z_0/H (Fig. 7b) has a similar shape. The main and secondary peaks in this histogram are concentrated around slightly smaller values $z_0/H = 0.9$ and $z_0/H = 0.5$, respectively. In contrast, the distribution of z_{\min}/H (Fig. 8b) is much flatter but still contains distinct peaks at $z_{\min}/H = 0.25$, 0.45 and 0.65 , and a narrow peak at $z_{\min}/H = 0.2$. These features suggest that interrelations between the vertical locations of the maximum, zero-crossing and minimum of the mode function are greatly different.

The locations of zero-crossings of the mode function largely follow the relevant locations of the maximum. Therefore, both zero-crossings and maxima of the mode function roughly reflect the core variations in the water depth. In contrast, the minima of the mode function are only weakly, if at all, correlated with z_{\max} and z_0 . It is therefore likely that the quantity z_{\min} reflects some other features of the bathymetry and hydrography of the sea. This conjecture once more supports the choice of the maximum of the mode function for the normalisation of this function.

Another view of the nature of the distributions of the quantities z_{\max}/H , z_0/H and z_{\min}/H can be provided using a scatter-plot of their values against the physical water depth (Fig. 9). The plots of all three quantities exhibit a cluster with extensive variation in their values for relatively small depths. This feature indicates that very large variability in kinematic properties of internal waves of the second mode is an intrinsic feature of relatively shallow regions of the study area. For depths larger than 500 m all three quantities show a clear, almost rigorous dependence on water depth. Consistently with the above, z_{\max}/H and z_0/H are concentrated in a narrow range close to 1. Interestingly, z_{\min}/H exhibits an almost linear relationship with water

depth. This feature signals that the structure of the mode function of the second mode may have a certain systematic pattern of changes along the propagation of internal waves from their generation area over the deep-water region of the South China Sea towards the continental shelf. This pattern does not become visible in the behaviour of the quantities z_{\max}/H and z_0/H .

As discussed above, it is debatable whether the maximum or minimum values of the mode function should be used for normalising this function. The spatial distribution of the values of Φ_{\min}/Φ_{\max} indicates that the maximum of Φ exceeds the absolute value of the relevant minimum in most of the relatively shallow-water part of the study area whereas in the deeper regions $|\Phi_{\min}|$ is systematically larger than Φ_{\max} (Fig. 10). A histogram of the normalised values of Φ_{\min} contains two peaks of comparable height and width. The peak at $\Phi_{\min}/\Phi_{\max} = -1$ evidently reflects the typical values of this ratio in the shallow areas whereas another peak at -2 is characteristic of this ratio in deeper regions. The values of $|\Phi_{\min}|$ do not exceed 2.5 in the interior of the South China Sea but reach levels >3 in the Sulu Sea.

3.2 Distributions of kinematic parameters of internal waves of the second mode

Spatial distributions of phase speeds of long linear internal waves of the first and second modes are very similar to each other in the South China Sea (Fig. 11). The phase speeds for internal waves of the second mode are mostly below 1.5 m/s in this water body in typical conditions of July. Internal waves of the first mode propagate much faster. The phase speeds of waves from the first and second modes usually differ by a factor of 1.5–2. As expected, the phase speed of waves of both modes largely depends on the water depth (Talipova and Polukhin, 2001; Polukhin et al., 2003). The presence of two subregions of the study area with different characteristic phase speeds appears in the scatter-plot of phase speeds and water depth (Fig. 12a). This feature becomes distinctly evident as a two-peak distribution of the empirical distribution of different phase speeds (Fig. 12b). Most internal waves of the second mode propagate with speeds around 0.2 m/s or around 1.4 m/s in the South China Sea.

Even though water depth is one of the most important factors governing the propagation speed of internal waves, stratification of water masses equally contributes to the properties of the propagation of internal waves. **Its impact is apparently complemented by variations in the amount of incoming radiation from the Sun. These variations may be one of the reasons** of the presence of the meridional pattern of the phase speed of internal waves of the second mode. This meridional pattern is well known for internal waves of the first mode (Talipova and Polukhin, 2001). Its presence is a likely reason why the dependence of the phase speed on water depth shows substantial scatter in the study area (Fig. 12a). The level of scatter is, however, fairly moderate and the relationship between the water depth and phase speed can be reasonably approximated using a power function

$$c = q_c H^a \tag{8}$$

For water depths less than 500 m an appropriate approximation of the coefficient in Eq. (8) is $q_c = 0.0078 \text{ m}^{0.25} \text{ s}^{-1}$ (Fig. 12a). The 95% confidence interval of this estimate is [0.0075, 0.0081]. The estimate for the power in Eq. (8) is $a = 0.75$ whereas

the relevant 95% confidence interval is [0.743, 0.757]. For water depths exceeding 500 m (Fig 12a) respective estimates are $q_c = 0.1901 \text{ m}^{0.756} \text{ s}^{-1}$ (95% confidence interval [0.1802, 0.2]) and $a = 0.244$ (95% confidence interval [0.237, 0.251]).

Spatial distributions of the coefficient at the dispersive term of Gardner's equation (1) for internal waves of the second (Fig. 13a) and first (Fig. 13b) modes are also qualitatively similar. However, the numerical values of this coefficient differ substantially. This coefficient (and, consequently, the impact of linear dispersion on the wave propagation and dynamics) for waves of the second mode is by about 3–4 times smaller than the similar coefficient for the waves of the first mode. The relationship between this coefficient and water depth (Fig. 13c) is remarkably different from a similar relationship (8) for phase speed. Figure 13c clearly represents a quadratic relationship that graphically can be presented as a parabola

$$\beta = q_\beta H^2. \quad (9)$$

An estimate for the coefficient in Eq. (11) is $q_\beta = 0.01682 \text{ m s}^{-1}$, with a 95% confidence interval [0.01669, 0.01695]. The scatter of the values of this coefficient for a given depth increases with the increase in the water depth. This feature demonstrates that deep-water stratification may have a considerable impact on the values of the coefficient at the dispersive term in deeper areas.

Differently from the coefficient at the dispersive term, the values of coefficients at the nonlinear terms of Gardner's equation are mostly governed by properties of stratification and only insignificantly depend on the water depth (Talipova and Polukhin, 2001). It is therefore not surprising that the maps of these coefficients for waves of the second (Fig. 14a) and first (Fig. 14b) modes are qualitatively similar to each other and that the numerical values of these coefficients for the two modes are comparable.

The histogram of the values of the coefficient at the quadratic term in Eq. (1) indicates that, differently from several other quantities addressed above, this coefficient has a clearly skewed but unimodal distribution. The values with both signs are more or less equally represented (Fig. 14c). The range of values is from -0.01 to $+0.02 \text{ s}^{-1}$. The most frequent values are negative, the relevant peak is located at -0.007 s^{-1} , and the majority of single values are also negative. This feature apparently mirrors the larger extent of deep-water regions compared to relatively shallow ones in the South China Sea. However, the area of the shallow-water region of the sea is also significant and almost half of the values of the coefficient at the quadratic term are positive.

Interestingly, a smaller peak exists for zero values of this coefficient. Gardner's equation transforms into the modified KdV equation in locations where the coefficient at the quadratic term vanishes and one has to use this equation in order to properly describe weakly nonlinear dynamics of internal waves in such regions. Importantly, the study area contains regions characterised by large gradients and changes in the sign of this coefficient. In general, the signs of this coefficient are different in deeper-water and shallower regions of the South China Sea. Interestingly, the signs of this coefficient are also different in the north-western and south-western regions of the continental shelf for both modes.

The coefficient in question is positive in most of the northern part of the shelf; consequently, the situation is favourable for the existence of positive internal solitons of the second mode. This feature explains why convex solitons are predominantly

recorded in the north-eastern segments of the continental shelf (Yang et al., 2010). In contrast, this coefficient is generally negative for internal waves of the first mode whereas its positive values are found only in a few small areas of the South China Sea. Further, this coefficient for waves of the second mode is predominantly positive in the southern relatively shallow part of the South China Sea whereas for waves of the first mode the sign of this coefficient is highly variable.

5 It is well known that the values of the coefficient of the quadratic term of Eq. (2) for internal waves of the first mode are practically independent of the water depth (Talipova and Polukhin, 2001). This property is also true for internal waves of the second mode in the South China Sea (Fig. 15). The largest absolute values of this coefficient (corresponding to both negative and positive values) occur in relatively shallow areas. The range of its values in deeper parts (depths >1000 m) of the study area extends from -0.008 s^{-1} to 0.008 s^{-1} , with the majority between -0.007 s^{-1} and 0.002 s^{-1} . Several negative outliers ($<-$
10 0.01 s^{-1}) become evident at very large depths (4–5 km).

The coefficient at the cubic nonlinear term of Eq. (1) has relatively small (but positive) values for waves of the first mode in the entire deep-water region of the South China Sea (Fig. 16b). This coefficient for waves of the second mode has also small absolute values in this area. It is positive only on the continental slope and turns negative in the entire eastern part of the sea. This coefficient for waves of the second mode has large positive values in selected locations of the Sulu Sea. The north-
15 eastern shelf of the South China Sea is characterised by intermittent variations in the sign of this coefficient for both modes of internal waves. This area also shows the largest absolute values of this coefficient ($0.001 \text{ m}^{-1}\text{s}^{-1}$) for both modes.

The histogram of different values of the coefficient at the cubic term of Eq. (2) is moderately skewed. It covers values from $-0.001 \text{ m}^{-1}\text{s}^{-1}$ to $0.001 \text{ m}^{-1}\text{s}^{-1}$ and has a high and relatively narrow peak at zero values (Fig. 16c). The majority of the values of this coefficient are negative, in the range from $-0.0005 \text{ m}^{-1}\text{s}^{-1}$ to zero. Positive values are scarce and small. For example,
20 only 5 values are counted around $0.00025 \text{ m}^{-1}\text{s}^{-1}$ whereas some 75 negative values of the same magnitude exist at $-0.00025 \text{ m}^{-1}\text{s}^{-1}$. Similarly to the coefficient at the quadratic term, the values of the coefficient at the cubic term of Eq. (2) are practically independent of the water depth for both modes (Fig. 17). Extensive scatter and the largest absolute values of this coefficient are characteristic of shallow areas. For water depths >1 km this coefficient is in the range from $0.00013 \text{ m}^{-1}\text{s}^{-1}$ to $-0.0003 \text{ m}^{-1}\text{s}^{-1}$. As an exception, a few pixels in the Sulu Sea contain much larger positive (for waves of the second mode) or
25 smaller negative (for waves of the first mode) values.

Even though several properties of water masses of the South China Sea exhibit extensive seasonal variations, this feature not necessarily becomes evident in terms of kinematic parameters of internal waves of the second mode. The maps of quantities that express the normalised stratification conditions z_{\max}/H , z_0/H , z_{\min}/H , Φ_{\min} and the linear parameters c and β for January (not shown) qualitatively almost coincide with similar maps for July. The match is almost perfect in the deeper area of the
30 basin. The largest quantitative differences (on the order of 20%) occur in shallow areas of this sea. However, both coefficients at the nonlinear terms of Gardner's equation have substantial seasonal variations. The values of the coefficient α at the quadratic term change insignificantly from July to January in deeper areas but are instead of very small values in July quite large (around and above 0.01 s^{-1}) in shallow areas. The values of the coefficient α_1 at the cubic nonlinear term vary in a complicated manner between January and July.

3.3 Applicability of the asymptotic model for long internal waves in the South China Sea

Gardner's equation is, strictly speaking, only an asymptotically valid model for weakly nonlinear long internal waves. Thus, its applicability should be discussed for each particular environment and set of parameters of internal waves. The observed amplitudes of internal waves of the second mode in the shelf region of the South China Sea were in the range of 10–30 m. According to Yang et al. (2009, 2010), amplitudes of internal solitons of the second mode are about 20 m. We use the value $A = 20$ m for the evaluation of the applicability of the Gardner model (1) in the western part of the South China Sea located on the continental shelf together with the typical dimensional (physical) values of the coefficients of the quadratic and cubic nonlinear terms in Eq. (1).

The above shows that in this region usually $\alpha = 0.01 \text{ s}^{-1}$ and thus the typical magnitude of the quadratic term is $\alpha A = 0.2 \text{ m s}^{-1}$. Similarly, the typical value of the coefficient at the cubic nonlinear term is $\alpha_1 = 0.0005 \text{ m}^{-1} \text{ s}^{-1}$ and the magnitude of this term is $\alpha_1 A^2 = 0.2 \text{ m s}^{-1}$. **The case when both nonlinear terms are small is discussed in detail by Pelinovsky et al. (2007), Kurkina et al., 2015.** The typical magnitude of the phase speed of linear long internal waves of the second mode is $c \sim 0.4 \text{ m s}^{-1}$. Therefore, both nonlinear terms of Gardner's equation have an equal magnitude that is about half of the long wave speed of the internal waves of the second mode. **In the light of estimates of Maderich et al (2009, 2010) the presented relationships signal that Gardner's equation is suitable for the description and analysis of properties, propagation and dynamics of internal waves with the amplitude of up to 20 m in the South China Sea conditions.** Even though **such solitary waves are strongly nonlinear**, possible errors in the estimates of their parameters (first of all wave amplitudes) based on the Gardner model do not exceed 20% (Maderich et al, 2009, 2010). This conjecture is consistent with the practice of the use of such asymptotic models. This level of deviations of the estimates from the true values is commonly acceptable (Liu et al., 2004; ~~Talipova and Pelinovsky, 2013;~~ Talipova et al., 2014, 2015). As errors of this kind rapidly increase with increasing wave amplitude, the use of such models for smaller-amplitude waves is associated with much lower levels of errors.

4 Discussion and conclusions

The derived maps of various parameters of the governing quantities of the underlying model (such as the location of the maxima of the modal function) and the parameters of the weakly nonlinear models provide a new insight into qualitative features of the propagation and transformations of internal waves of the second mode in the South China Sea. The presented climatologically valid distributions of the phase speed and coefficients at the nonlinear terms of Gardner's equation (1) (or other equations of the family of KdV-type equations) may be used for express estimates of various parameters of internal waves of this kind. This includes *inter alia* evaluation of hydrodynamic loads on the seabed (and on offshore engineering structures) created by the propagation of such waves, forecasting of areas and depths strongly affected by the internal wave activity after intense wave generation events, and identification of regions with a very high probability that such waves will break.

A promising development is the possibility of evaluation of the limiting amplitude of internal solitons that correspond to negative values of the coefficient at the cubic nonlinear term (Kurkina et al, 2011, 2017) as well as the amplitude of algebraic solitons that correspond to the positive values of this coefficient.

The main conclusions of the study are:

- 5 • Spatial distributions of all kinematic parameters of internal waves of the second mode in the South China Sea (except for the coefficient at the cubic nonlinear term of Gardner's equation) are qualitatively similar to analogous distributions for internal waves of the first mode.
- The dispersive term of Gardner's equation for internal waves of the second mode is about 3–4 times smaller than this term for waves of the first mode.
- 10 • The phase speed for internal waves of the second mode is about half of that for waves of the first mode.
- The coefficients at the quadratic and cubic terms of Gardner's equation for internal waves of the second mode mainly depend on the stratification and much less on the total water depth.
- In contrast to internal waves of the first mode, the quadratic term of Gardner's equation is mostly negative for waves of the second mode in the South China Sea.
- 15 An important limitation of the current study is that the potential impact of large-scale currents and mesoscale activity is not taken into account in our analysis. Both these phenomena may substantially modify the local stratification and greatly impact the values of coefficients of Gardner's equation. To our knowledge, no detailed information is available about the currents in this area in the existing databases at a level that would be acceptable to quantify their impact on the local stratification on scales of propagation of internal waves. A feasible way forward seems to be an attempt to quantify the level of variations of
- 20 the seasonal values of the coefficients in question using single profiles of temperature and salinity in selected sea areas.

Data availability. The derived maps of the parameters as well as underlying data for histograms and scatter plots may be obtained from the authors in digital form via requests by e-mail.

- 25 *Competing interests.* The authors declare that they have no conflict of interest.

Acknowledgements. This study was initiated in the framework of the state task programme in the sphere of scientific activity of the Ministry of Education and Science of the Russian Federation (projects No. 5.4568.2017/6.7 and No. 5.1246.2017/4.6) and financially supported by this programme, grants of the President of the Russian Federation (NSh-6637.2016.5 and MK-30 5208.2016.5), Russian Foundation for Basic Research (grant No. 16-05-00049), and institutional support IUT33-3 from the Estonian Research Council.

References

- Cai, S., Long, X., and Gan, Z.: A numerical study of the generation and propagation of internal solitary waves in the Luzon Strait, *Oceanologica Acta*, 25, 51–60, 2002.
- Carnes, M.R.: Description and evaluation of GDEM - V3.0, NRL Rep. NRL/MR/ 7330 - 09 - 9165, Nav. Res. Lab., 1–27,
5 2009.
- Fofonoff, N., and Millard, R.Jr.: Algorithms for computation of fundamental properties of seawater. UNESCO Technical Paper in Marine Science 44, pp. 15–25, 1983.
- Grimshaw, R., Pelinovsky, E., and Talipova, T.: The modified Korteweg–de Vries equation in the theory of the large–amplitude internal waves, *Nonlin. Process. Geophys.*, 4, 237–250, 1997.
- 10 Grimshaw, R., Pelinovsky, E., Talipova, T., and Kurkin, A.: Simulation of the transformation of internal solitary waves on oceanic shelves, *J. Phys. Oceanogr.*, 34, 2774–2791, 2004.
- Grimshaw, R., Pelinovsky, E., and Talipova, T.: Modeling internal solitary waves in the coastal ocean, *Surv. Geophys.*, 28(2), 273–298, 2007.
- Grimshaw, R., Talipova, T., Pelinovsky, E., and Kurkina, O.: Internal solitary waves: propagation, deformation and
15 disintegration, *Nonlin. Process. Geophys.*, 633–649, 2010.
- Guo, P., Fang, W., Gan, Z. Chen, R., and Long, X.: Internal tide characteristics over northern South China Sea continental slope, *Chinese Sci. Bull.*, 51(2), 17–25, doi: 10.1007/s11434-006-9017-y, 2006.
- Holloway, P., Pelinovsky, E., and Talipova, T.: A generalized Korteweg–de Vries model of internal tide transformation in the coastal cone, *J. Geophys. Res.*, 104(C8), 18333–18350, 1999.
- 20 Holloway, P., Pelinovsky, E., and Talipova, T.: Internal tide transformation and oceanic internal solitary waves. In: *Environmental Stratified Flows* (Ed. by R. Grimshaw), Kluwer Acad. Publ., 29–60, 2001.
- Ivanov, V.A., Lisichenok, A.D., and Nemirovsky, M.S.: Excitation of short-period internal waves by wind pulsations, *Izvestiya Atm. Ocean. Phys.*, 23, 179–185, 1987.
- Klymak, J.M., Pinkel, R., Liu, C.-T., Liu, A.K., and David, L.: Prototypical solitons in the South China Sea, *Geophys. Res. Lett.*, 33, 1–4, 2006.
25
- Kurkina, O., Talipova, T., Pelinovsky, E., and Soomere, T.: Mapping the internal wave field in the Baltic Sea in the context of sediment transport in shallow water, *J. Coast. Res. SI*, 64, 2042–2047, 2011.
- Kurkina, O.E., Kurkin, A.A., Rouvinskaya, E.A., and Soomere, T.: Propagation regimes of interfacial solitary waves in a three-layer fluid, *Nonlin. Process. Geophys.*, 22, 117–132, 2015.
- 30 Kurkina, O., Rouvinskaya, E., Talipova, T., Kurkin, A., and Pelinovsky, E.: Nonlinear disintegration of sine wave in the framework of the Gardner equation, *Physica D*, 333, 222–234, 2016.
- Kurkina, O., Rouvinskaya, E., Talipova, T., and Soomere, T.: Propagation regimes and populations of internal waves in the Mediterranean Sea basin, *Estuar. Coast. Shelf Sci.*, 185, 44–54, doi: 10.1016/j.ecss.2016.12.003, 2017.

- Lamb, K., Polukhina, O., Talipova, T., Pelinovsky, E., Xiao, W., and Kurkin, A.: Breather Generation in the Fully Nonlinear Models of a Stratified Fluid, *Phys. Rev. E.*, 75(4), 046306, 2007.
- Levitus, S.: Climatological Atlas of the World Ocean, NOAA Professional Paper, 13, 1982.
- Liao, G., Hua Xu, X., Liang, C., Dong, C., Zhou, B., Ding, T., Huang, W., and Xu, D.: Analysis of kinematic parameters of internal solitary waves in the northern south china sea, *Deep-Sea Res. I*, 94, 159–172, 2014.
- 5 Liu, A.K., Chang, Y.S., Hsu, M.K., and Liang, N.K.: Evolution of nonlinear internal waves in the East and South China Seas, *J. Geophys. Res.*, 103, 7995–8008, 1998.
- Liu, A.K., Ramp, S.R., Zhao, Y., Tswen, Yung, and Tang, T.Y.: A case study of internal solitary wave propagation during ASIAEX 2001, *IEEE J. Ocean. Eng.*, 29, 1144–1156, 2004.
- 10 Liu, Ch.-T., Pinkel, R., Klymak, J., Hsu, M.-K., Chen, H.-W., and Villanoy, C.: Nonlinear internal waves from the Luzon Strait, *EOS*, 87(42), 449–451, 2006.
- Liu, A. K., Su, F.-Ch., Hsu, M.-K., Kuo, N.-J., and Ho, Ch.-R.: Generation and evolution of mode-two internal waves in the South China Sea, *Cont. Shelf Res.*, 59, 18–27, 2013.
- Liu, P., and Wang, X.: Multi-layer model for nonlinear internal wave propagation in shallow water, *J. Fluid Mech.*, 695, 341–365, 2012.
- 15 Maderich, V., Talipova, T., Grimshaw, R., Pelinovsky, E., Choi, B.H., Brovchenko, I., Terletska, K., and Kim, D.C.: Internal solitary wave transformation at the bottom step in two-layer flow: the Gardner and Navier–Stokes frameworks, *Nonlin. Process. Geophys.*, 16, 33–42, 2009.
- Maderich, V., Talipova, T., Grimshaw, R., Pelinovsky, E., Choi, B.H., Brovchenko, I., and Terletska, K.: Interaction of a large amplitude interfacial solitary wave of depression with a bottom step, *Phys. Fluids*, 22, 076602, 2010.
- 20 Orr, M H and Mignerey, P C.: Nonlinear internal waves in the South China Sea: Observation of the conversion of depression internal waves to elevation internal waves, *J. Geophys. Res.*, 108(C3), 3064, 2003.
- Pelinovsky, E., Talipova, T., and Ivanov, V.: Estimations of nonlinear properties of internal wave field off the Israel Coast, *Nonlin. Process. Geophys.*, 2(2), 80–88, 1995.
- 25 **Pelinovsky, E.N., Slunyaev, A.V., Polukhina, O.E., and Talipova, T.G.: Internal solitary waves. In: Solitary Waves in Fluids (Ed. by R. Grimshaw), WIT Press, Southampton, Boston, 85–110, 2007.**
- Polukhin, N., Talipova, T., Pelinovsky, E., and Lavrenov, I.: Kinematic characteristics of the high-frequency internal wave field in the Arctic, *Oceanology*, 43(3), 333–343, 2003.
- Polukhin, N.V., Pelinovskii, E.N., Talipova, T.G., and Muyakshin, S.I.: On the effect of shear currents on the vertical structure and kinematic parameters of internal waves, *Oceanology*, 44, 22–29, 2004.
- 30 ~~Ramp, S.R., Tang, T.Y., Duda, T.F., Lynch, J.F., Liu, A.K., Chiu, C.S., Bahr, F.L., Kim, H.R., and Yang Y.J.: Internal solitons in the northeastern South China Sea—Part I: Sources and deep water propagation, *IEEE J. Ocean. Eng.*, 29(4), 1157–1181, doi: 10.1109/JOE.840839, 2004.~~

- Ramp, S.R., Yang, Y.J., and Bahr, F.L.: Characterizing the nonlinear internal wave climate in the northeastern South China Sea, *Nonlin. Process. Geophys.*, 17(5), 481–498, doi: 10.5194/npg-17-481-2010, 2010.
- Ramp, S.R., Yang, Y.J., Reeder, D.B., Buijsman, M.C., and Bahr, F.L.: The evolution of mode-2 nonlinear internal waves over the northern Heng-Chun Ridge south of Taiwan, *Nonlin. Process. Geophys.*, 22, 413–431, 2015.
- 5 Shroyer, E., Moum, J., and Nash, J.: Mode-2 waves on continental shelf: Ephemeral component of the nonlinear internal wave field, *J. Geophys. Res.*, C115, C07001, 2010.
- ~~Talipova, T., Pelinovsky, E., and Kōuts, T.: Kinematics characteristics of the internal wave field in the Gotland Deep, *Oceanology*, 38(1), 37–46, 1998.~~
- Talipova, T.G., Pelinovsky, E.N., and Kharif, Ch.: Modulational instability of long internal waves of moderate amplitudes in stratified and horizontally inhomogeneous ocean, *JETP Lett.*, 94(3), 199–203, 2011.
- 10 ~~Talipova, T.G., and Pelinovsky, E.N.: Modeling of propagating long internal waves in an inhomogeneous ocean: The theory and its verification, *Fund. Appl. Hydrophys.*, 6(2), 46–54, (in Russian), 2013.~~
- Talipova, T.G., Pelinovsky, E.N., Kurkin, A.A., and Kurkina, O.E.: Modeling the dynamics of intense internal waves on the shelf, *Izvestiya. Atmosph. Ocean. Phys.*, 50(6), 630–637, doi: 10.1134/S0001433814060164, 2014.
- 15 Talipova, T.G., Kurkina, O.E., Rouvinskaya, E.A., and Pelinovsky E.N.: Propagation of solitary internal waves in two layer ocean of variable depth, *Izvestiya Atmosph. Ocean. Phys.*, 51(1), 89–97, 2015.
- Talipova, T., and Polukhin, N.: Averaged characteristics of the internal wave propagation parameters in the World Ocean, *Izvestiya Russian Acad. Eng. Sci. Appl. Math. Informatics*, 2, 139–155, (in Russian), 2001.
- Teague, W.J., Carron, M.J., and Hogan, P.J.: A comparison between the Generalized Digital Environmental Model and Levitus climatologies, *J. Geophys. Res.*, 95, 7167–7183, 1990.
- Terletska, K., Jung, K.T., Talipova, T., Maderich, V., Brovchenko, I., and Grimshaw, R.: Internal breather-like wave generation by the second mode solitary wave interaction with a step, *Phys Fluids*, 28, 116602, 2016**
- Vlasenko, V.I. and Hutter, K.: Generation of second mode solitary waves by the interaction of a first mode soliton with a sill, *Nonlin. Process. Geophys.*, 8, 223–239, 2001.
- 25 Vlasenko, V. and Stashchuk, N.: Internal tides near the Celtic Sea shelf break: A new look at a well known problem, *Deep-Sea Res. I*, 24–36, 2015.
- Vlasenko, V., Sanchez Garrido, J.C., Stashchuk, N., Lafuente, J.G., and Losada, M.: Three-dimensional evolution of large-amplitude internal waves in the Strait of Gibraltar, *J. Phys. Oceanogr.*, 39, 2230–2246, 2009.
- Vlasenko, V., Stashchuk, N., Guo, C., and Chen, X.: Multimodal structure of baroclinic tides in the South China Sea, *Nonlin. Process. Geophys.*, 17, 529–543, 2010.
- 30 Vlasenko, V., Stashchuk, N., Inal, M., and Hopkins, J.: Tidal energy conversion in a global hotspot: On the 3D dynamics of baroclinic tides at the Celtic sea shelf break, *J. Geophys. Res.*, 119, 3249, 2014.
- Yang, Y.J., Fang, Y.Ch., Chang, M.H., Ramp, S.R., Kao, Ch.-Ch., and Tswen, Y.T.: Observations of second baroclinic mode internal solitary waves on the continental slope of the northern South China Sea, *J. Geophys. Res.*, V. 114, C10003, 2009.

Yang, Y.J., Fang, Y.C., Tang, T.Y., and Ramp, S.R.: Convex and concave types of second baroclinic mode internal solitary waves, *Nonlin. Process. Geophys.*, 17, 605–614, 2010.

Zhao, Zh, Klemas, V, Zheng, Q, Li, X and X.-H., and Yan, X-H.: Estimating parameters of a two-layer stratified ocean from polarity conversion of internal solitary waves observed in satellite SAR images, *Rem. Sens. Environ.*, 92(2), 276–287, 2004.

5 .

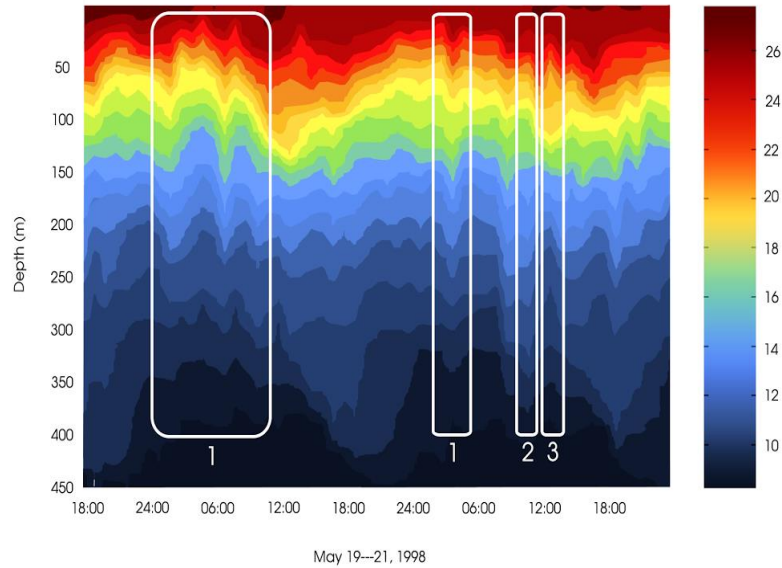


Figure 1: Internal waves representing the first, second and third mode (Guo et al., 2006). Numbers at the boxes in the panel indicate the number of the relevant mode.

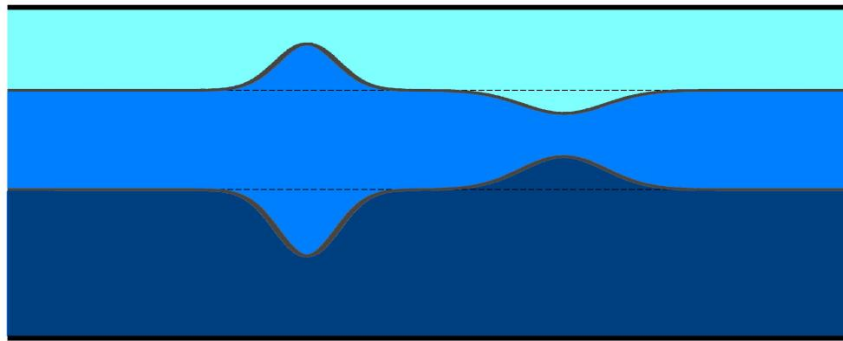


Figure 2: Scheme of internal solitary waves of the second mode with positive (left) and negative (right) polarity.

10

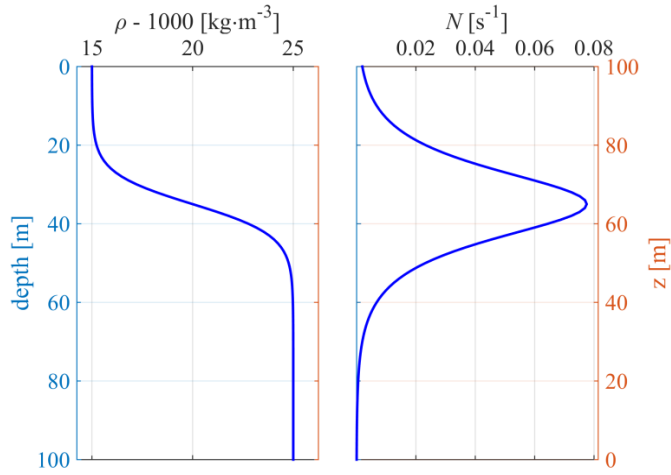
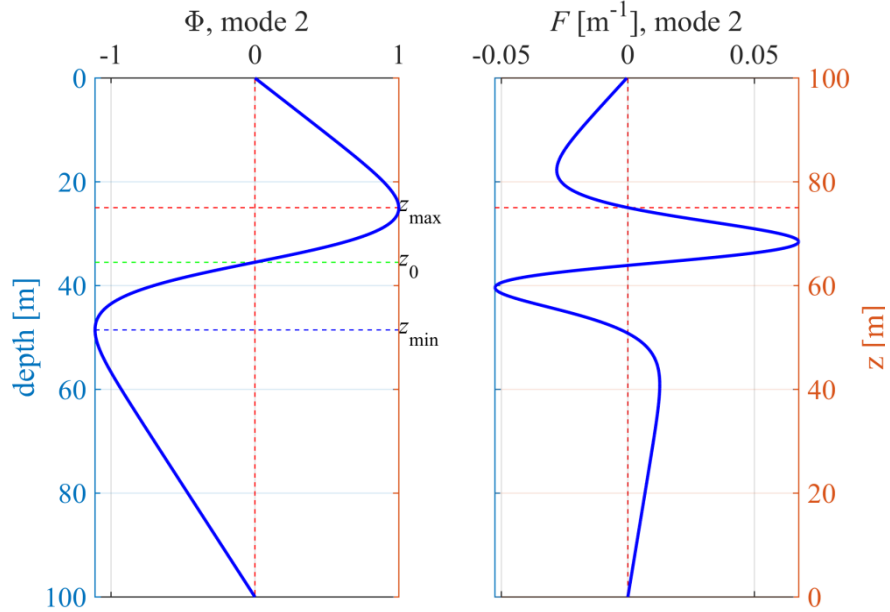


Figure 3: An example of the vertical profile of the density (left) and **Brunt-Väisälä** frequency (right) of a quasi-two-layer marine environment.



5 Figure 4: The **vertical structure of the mode function $\Phi(z)$** defined in Eq. (2) (left) and its nonlinear correction $F(z)$ defined by Eq. (5) (right) for internal solitary waves of the second mode for stratification presented in Fig. 3.

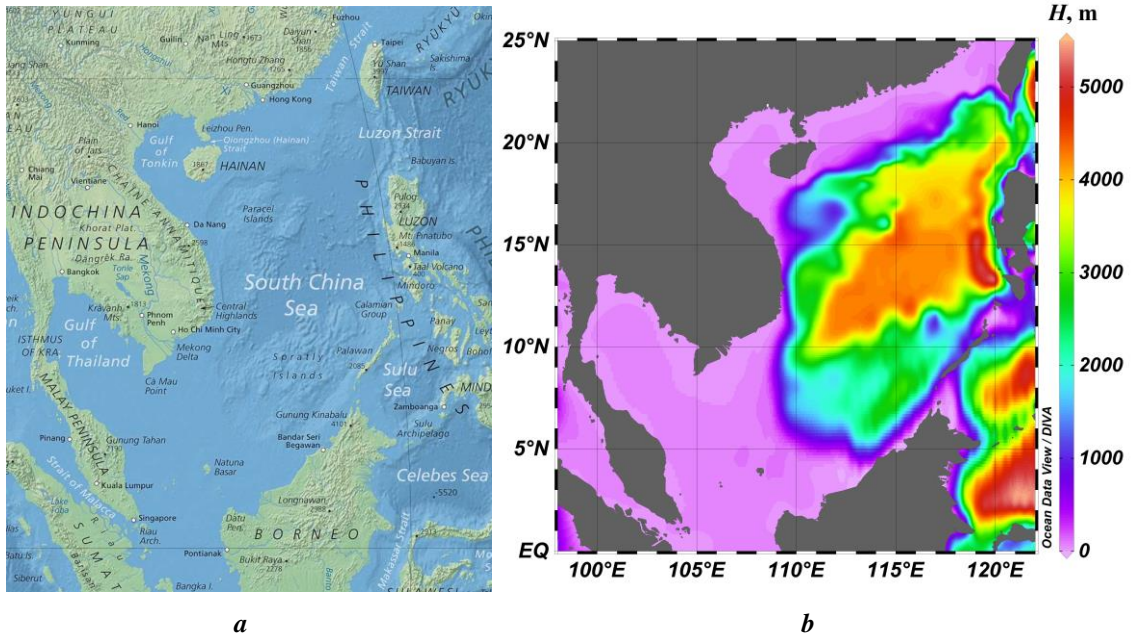


Figure 5: *a*) Location scheme of the South China Sea (<http://www.nationsonline.org/oneworld/map/South-China-Sea-political-map.htm>), *b*) bathymetry of the South China Sea extracted from the GDEM database (Carnes, 2009).

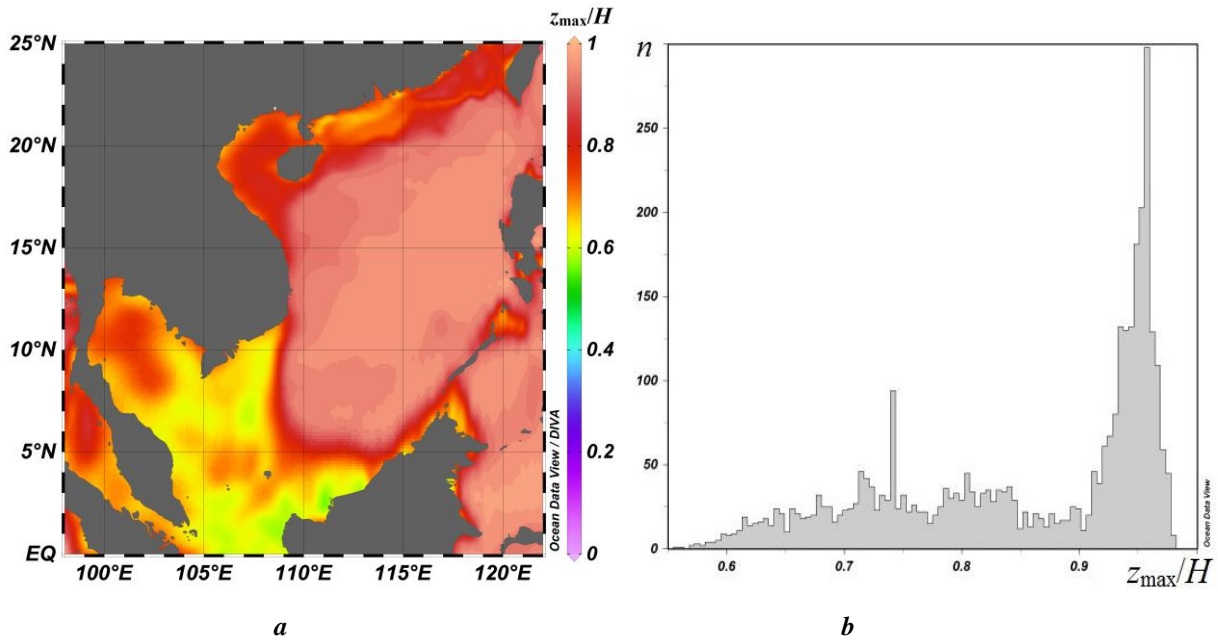


Figure 6: *a*) Map of the vertical location of the normalised depth z_{\max}/H of the maximum of the mode function in July in the South China Sea; *b*) histogram of values of z_{\max}/H in steps of 0.01 (n is the amount of values of z_{\max}/H in the relevant interval). The total number of pixels in the map is 3446.

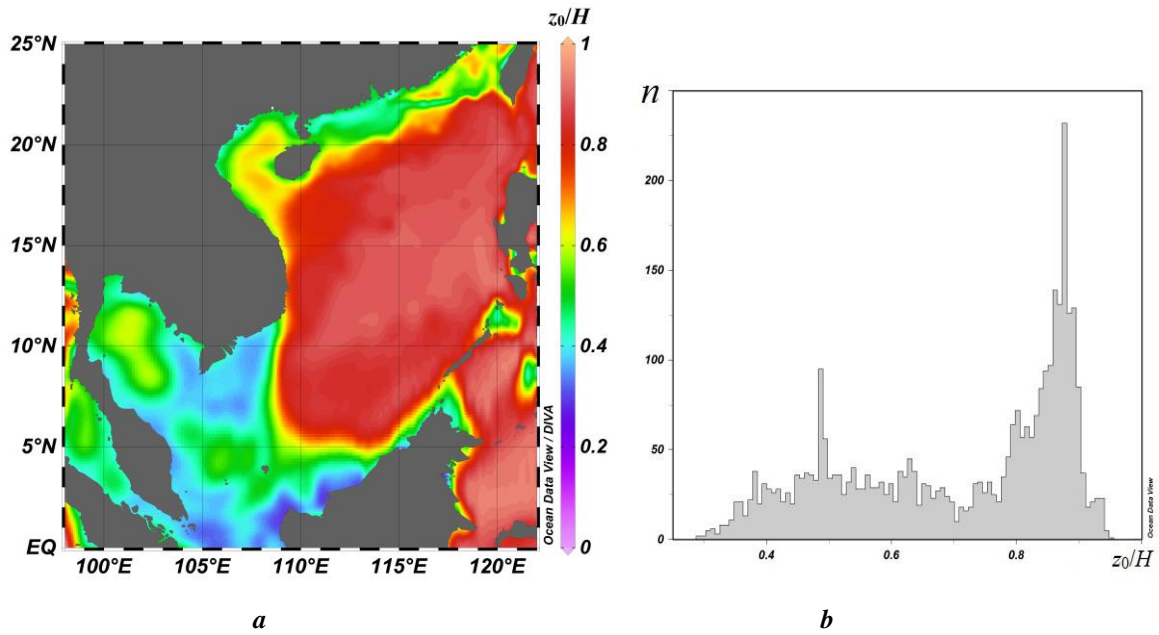


Figure 7: a) Map of the vertical location of the normalised zero-crossing depth z_0/H of the mode function in July in the South China Sea; b) histogram of values of z_0/H . Notations are the same as for Fig. 6.

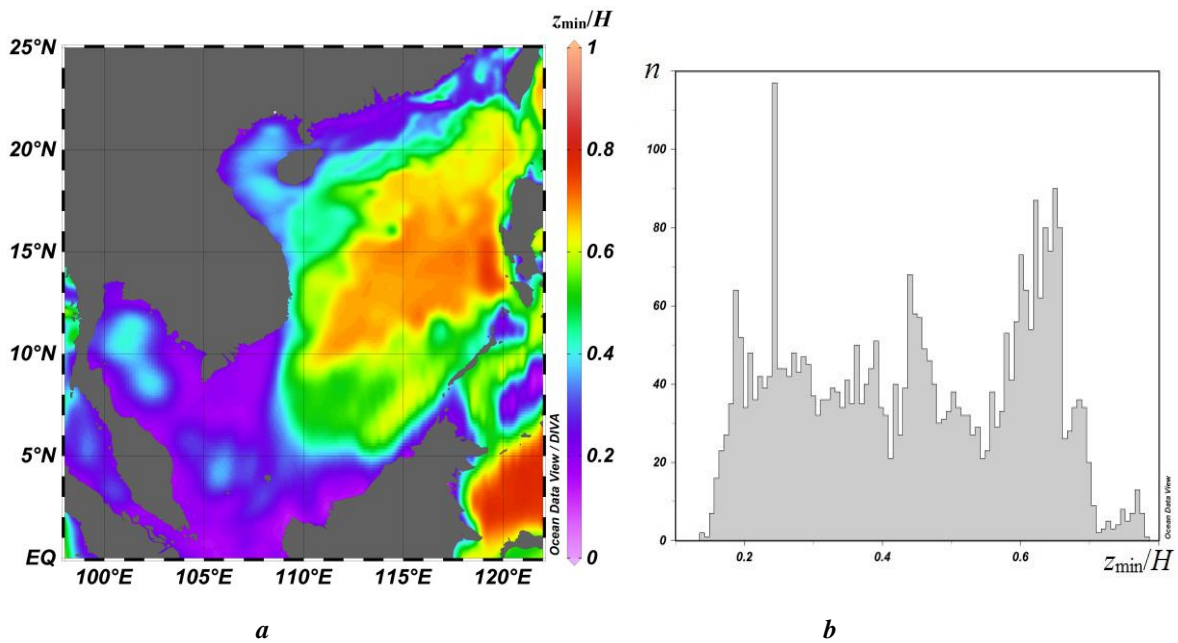


Figure 8: a) Map of the vertical location of the normalised depth z_{\min}/H of the minimum of the mode function in July in the South China Sea; b) histogram of values of z_{\min}/H . Notations are the same as for Fig. 6.

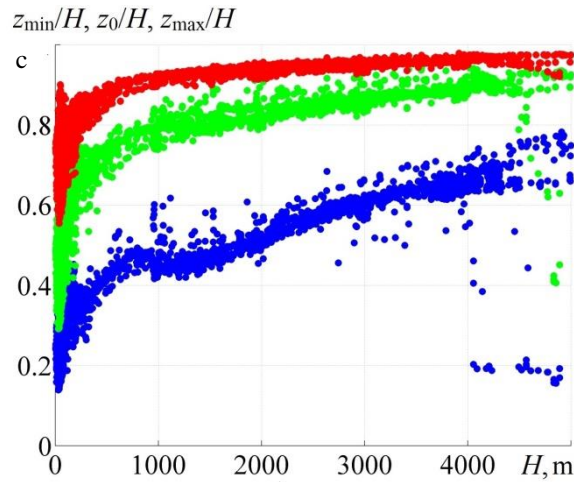


Figure 9: Scatter-plot of normalised values of z_{\max}/H (red), z_0/H (green), and z_{\min}/H (blue) against the total water depth in the South China Sea.

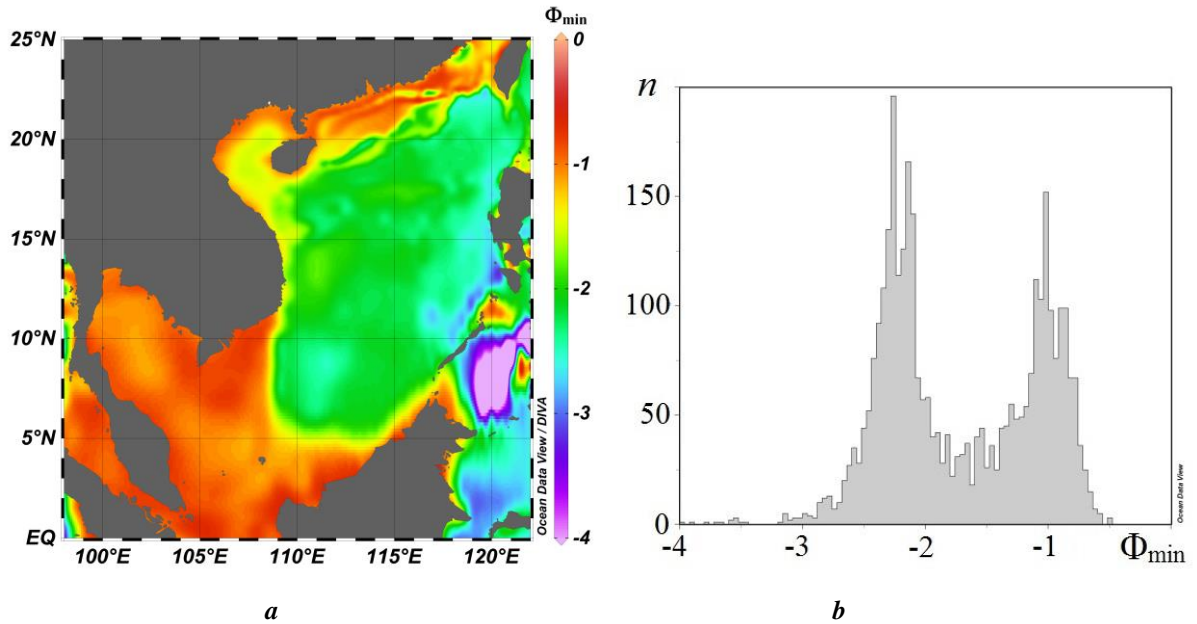


Figure 10: a) Map of normalised values Φ_{\min} of the minimum of the mode function in July in the South China Sea; b) histogram of values of Φ_{\min} . Notations are the same as for Fig. 6.

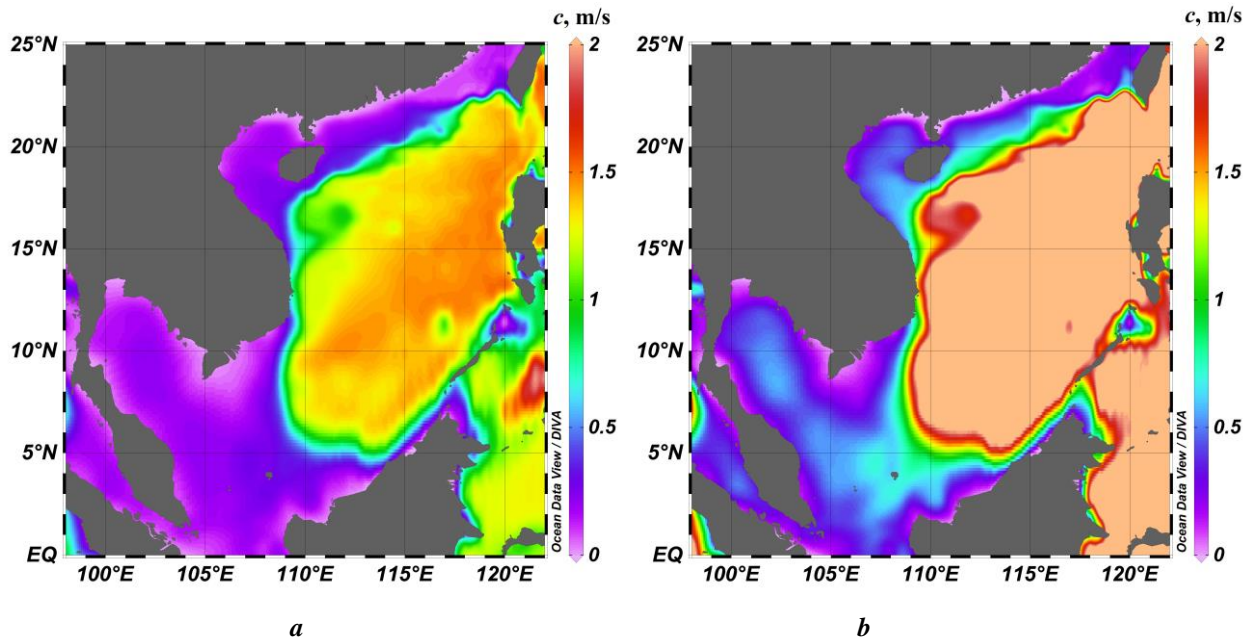


Figure 11: Map of phase speeds of long linear internal waves of the second (a) and first (b) mode in July in the South China Sea.

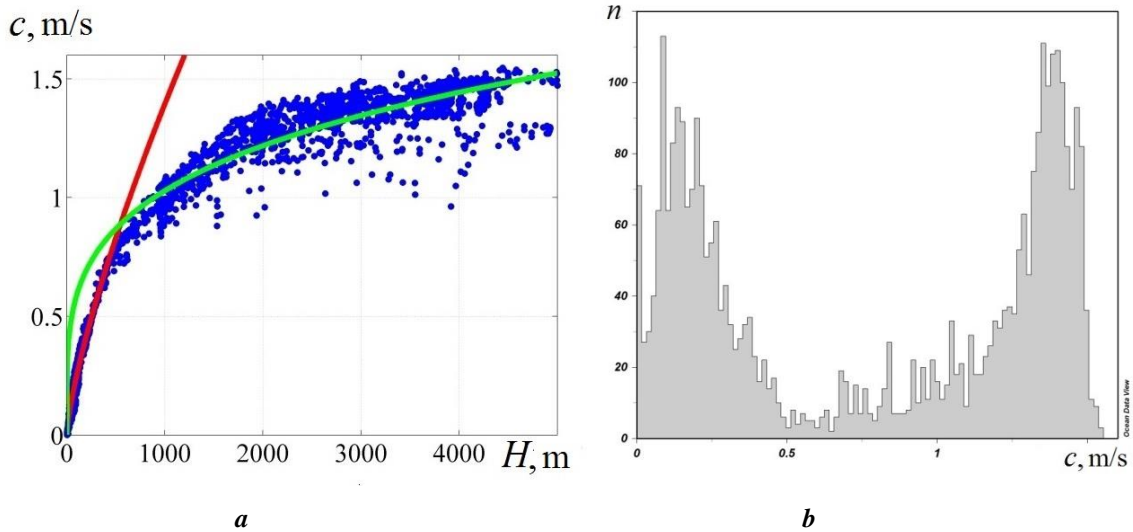
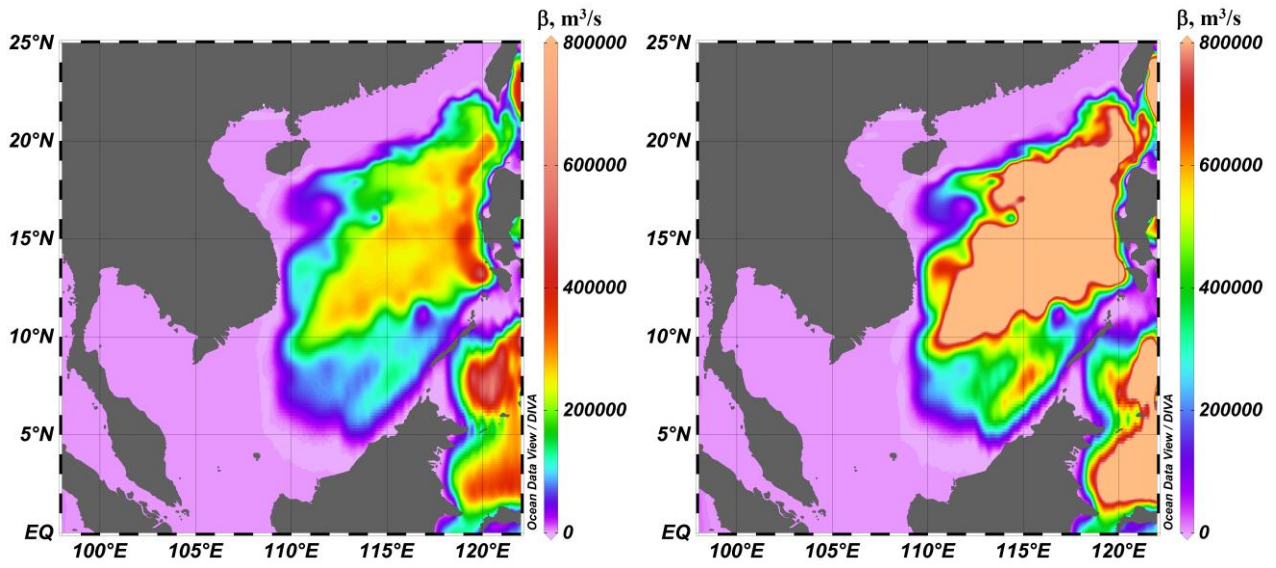
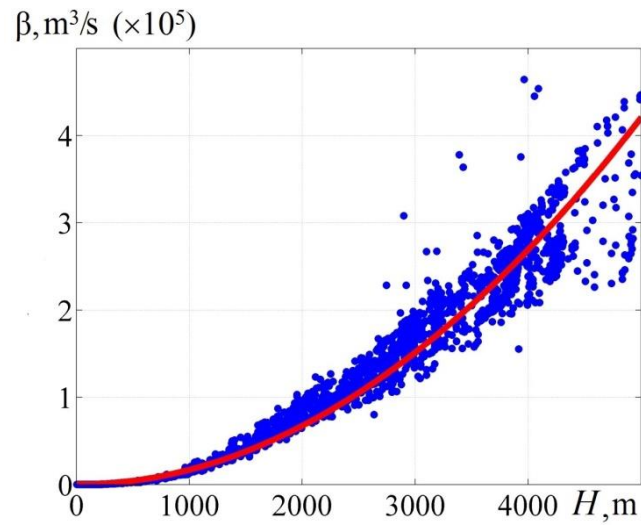


Figure 12: a) Scatter-plot of phase speeds of linear long internal waves of the second mode for different water depths in July in the South China Sea. Red curve: approximation of the relationship between the phase speed and water depth for depths below 500 m with a power function (8); green curve: the same approximation for depths >500 m; b) histogram of different values of the phase speed of linear long internal waves of the second mode. Other notations are the same as for Fig. 6.



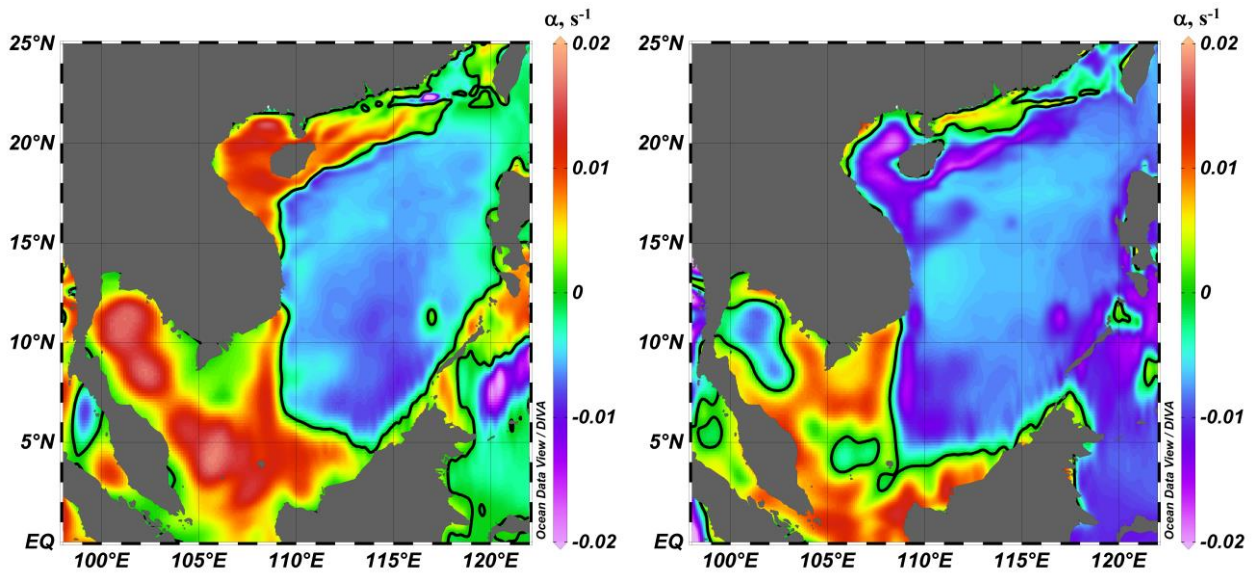
a

b



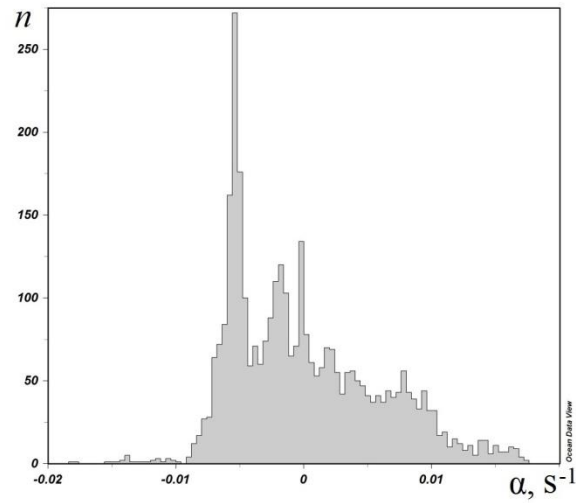
c

5 Figure 13: Map of coefficients at the dispersive term of Gardner equation for internal waves of the second mode (a) and first mode (b) in July in the South China Sea; c) scatter plot of this coefficient for internal waves of the second mode against water depth.



a

b



c

- 5 **Figure 14:** Map of coefficients at the quadratic term of Gardner equation for internal waves of the second mode (a) and first mode (b) in July in the South China Sea; c) histogram of this coefficient for internal waves of the second mode. Other notations are the same as for Fig. 6.

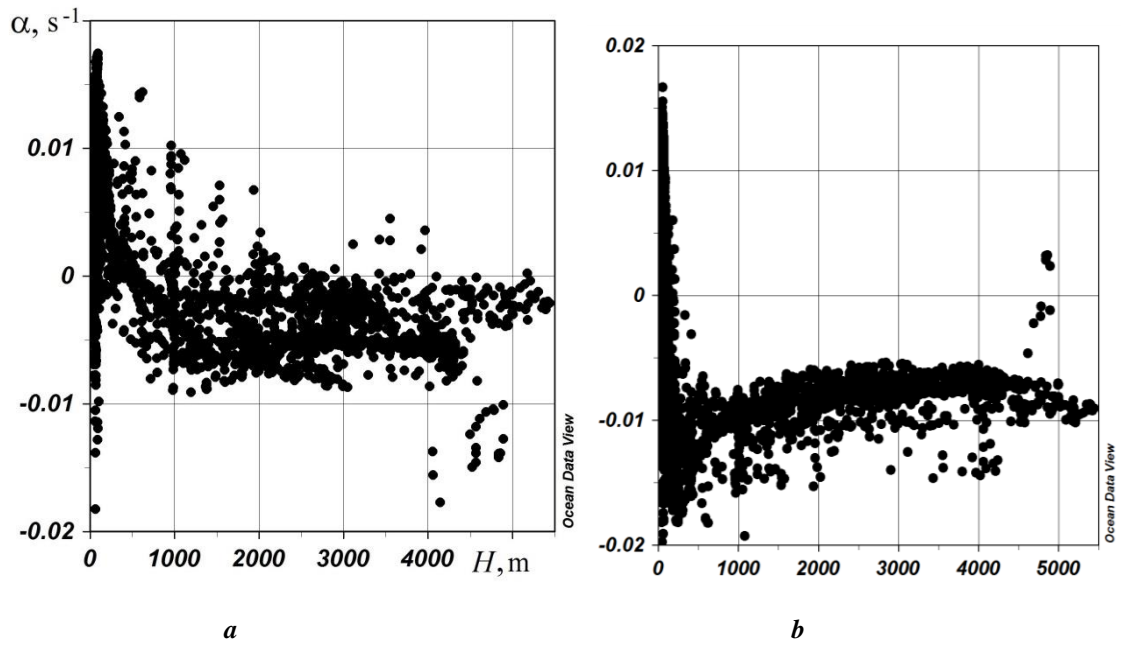
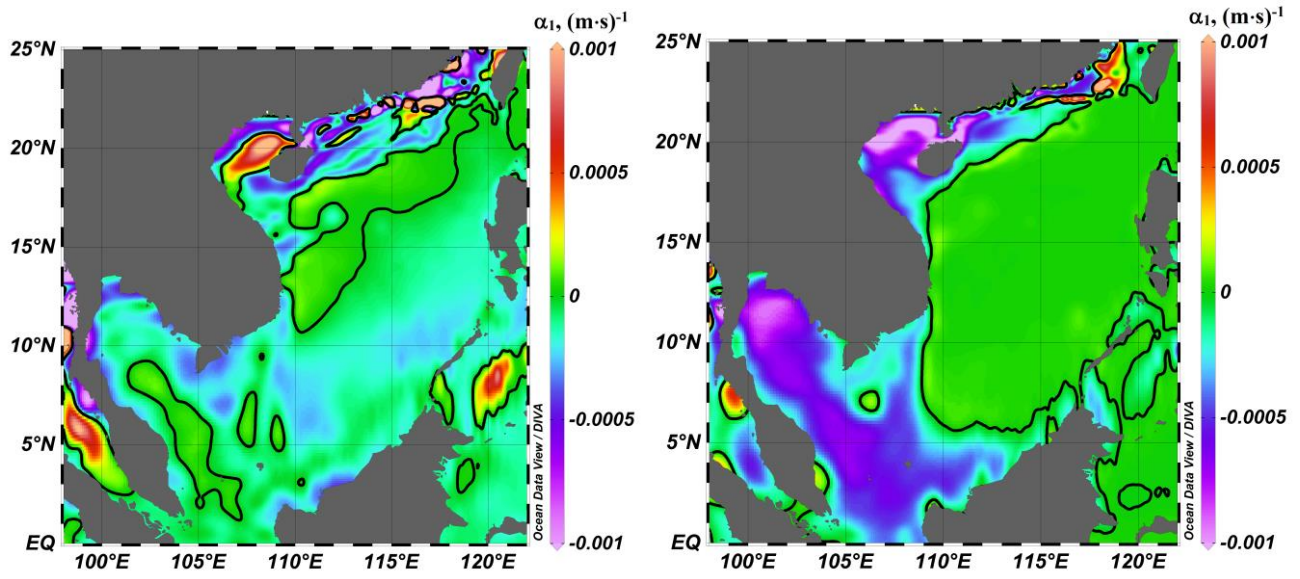


Figure 15: Scatter diagram of coefficients at the quadratic term of Gardner equation against water depth for internal waves of the second mode (a) and the first mode (b).

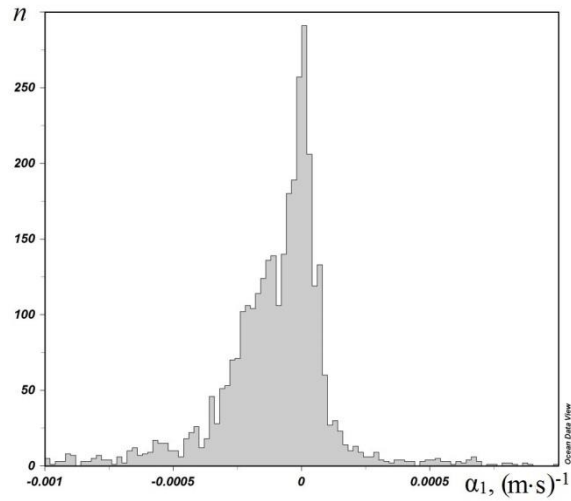
5

10



a

b



c

- 5 Figure 16: Map of coefficients at the cubic term of Gardner equation for internal waves of the second mode (a) and first mode (b) in July in the South China Sea; c) – histogram of this coefficient for internal waves of the second mode. Other notations are the same as for Fig. 6.

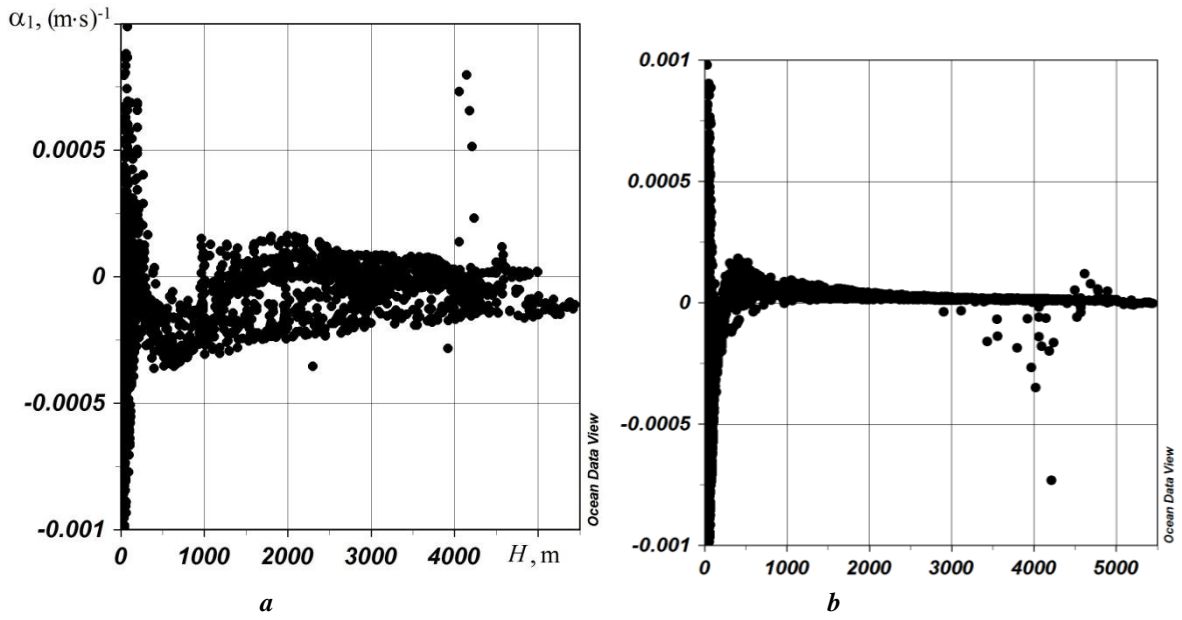


Figure 17: Scatter diagram of coefficients at the cubic term of Gardner equation against water depth for internal waves of the second mode (a) and the first mode (b).