

## Response to the reviewer 1's comments

In general, the paper is rather well written, addressing an interesting subject of intermittent turbulence by means of numerical simulations. The main subject of the study is well described with number of relevant citations, pointing out some of the problems associated with the notion of the term “intermittency” in turbulent flows. My major concerns related to the present manuscript are thus rather focused on the chosen methods, obtained results and conclusions based on them.

We thank the reviewer for the positive comments and constructive suggestions. We have revised the manuscript as suggested. Specifically, two additional simulations were conducted and we added an appendix (Appendix B) to evaluate the impact of simulation configurations, i.e., grid resolution, domain size, on the spatio-temporal characteristics of intermittency. In the following, we respond point-by-point to the reviewers' comments (colored in blue).

Although the general concept of using DNS methods to verify the hypothesis of generation of turbulent intermittency seems to be a good idea, there are several issues that have to be clarified in order to draw any definitive conclusion based on the obtained numerical results.

1) Description of the numerical method/solver in the paper The DNS is performed using an open-source package OpenFOAM. When it comes to the description of the numerical method itself, the authors claim (on page 187) that: "The governing equations are discretized using the finite-volume method. The spatial and temporal derivatives are discretized with the second-order central scheme and implicit second-order backward scheme, respectively. The pressure equation is solved using pressure implicit with splitting of operators (PISO) algorithm." Such a description seems to be insufficient and incomplete, as there are infinitely many second order central schemes for discretization of spatial derivatives and also infinitely many second order implicit backward formulas can be constructed for temporal discretization. The detailed description of these methods is not only important for allowing other authors to repeat and verify the simulations, but are also of a key point for interpretation of numerical results that do depend on numerical method being used. This is related with next comments.

We do not agree with the reviewer that the description of our spatial and temporal discretization schemes is incomplete. It is true that there are numerous second order discretization schemes for spatial and temporal differentials; however, they all have their specific names, e.g., backward-, forward-, and central-differential schemes for spatial derivatives, second order Runge-Kutta, Crank-Nicolson, implicit Euler backward schemes for temporal derivatives (please refer to Ferziger and Perić, p43-50, p148-151, Chung, p6 and p90, Cebeci et al., p99, and Tu et al., p133). As far as we know, there is only *one* second order central-differential scheme and *one* second order implicit Euler backward scheme. In addition, we cited the reference for the PISO algorithm (Issa 1986) for the solution of pressure equation. We believe our description for the numerical method is sufficient and not confusing to readers.

References:

Ferziger, J.H., and Perić, M.: Computational Methods for Fluid Dynamics. Springer, 2002.

Chung, T.J.: Computational Fluid Dynamics. Cambridge University Press, 2002.

Cebeci, T., Shao, J.P., Kafyeke, F., and Laurendeau, E.: Computational Fluid Dynamics for Engineers. Springer, 2005.

Tu, J., Yeoh, G.H., Liu, C.: Computational Fluid Dynamics: A Practical Approach. Butterworth-Heinemann, 2008.

Issa, R.I.: Solution of the Implicitly Discretised Fluid Flow Equations by Operator-splitting, J. Comput. Phys., 62, 40–65, 1986.

2) Choice of the numerical methods It is well known and documented that the numerical methods do affect to certain extent the results of simulations. Especially the convection dominated flows and DNS are prone to numerical artifacts caused by adopted solvers. This includes both the non-physical (numerical) oscillations in solution as well as excessive numerical diffusion introduced by the applied numerical discretization. Thus I will be very careful about justification of the choice of the specific numerical scheme, and will never base any conclusion on a simulations obtained using only a single numerical method. Especially an intriguing case like the one being solved in this paper necessarily needs to clearly distinguish and separate numerical artifacts from physical phenomena. So at least at this point I consider the presented numerical results as insufficient and unconvincing.

We have been careful on choosing a “sufficient” grid resolution in the current paper.

In the original manuscript:

- We collected the grid resolutions of the existing DNS simulations for neutrally and stably stratified channel flows in Table 2. According to Table 2, a relatively fine grid resolution was chosen in the current paper. With the current grid resolution, our simulation results agreed reasonably well with the well-cited spectral DNS benchmark data from Moser et al., 1999 for the neutral case.
- For the stably stratified case (S120), we compared the oblique intermittent turbulence bands reported in the current paper (Fig. 8) with the spectral DNS results shown in Brethouwer et al., 2012 (please refer to Fig. 11c in their paper), and a good agreement was observed.

In the revised manuscript:

- We added an appendix (Appendix B) to further evaluate the influence of grid resolution and domain size on a specific case (S120). Two additional simulations are conducted. For one simulation, the grid resolution is increased by 50% while the domain size is kept unchanged. For the other simulation, the grid resolution is kept unchanged while the domain size is increased by 50% in the horizontal directions. Generally, the new simulation results are qualitatively similar to those shown in Figs. 4 and 8. The control grid resolution and domain size are thus expected to be sufficient to resolve and accommodate the spatio-temporal evolution of intermittent turbulence.

Please see the following text for the new appendix:

#### “Appendix B: Influence of Simulation Configurations

In this appendix, we evaluate the influence of simulation configurations, e.g., grid resolution, domain size, on the spatio-temporal characteristics of intermittency. Two additional simulations are conducted for the  $Re_\tau = 180$ ,  $Ri_\tau = 120$  case. For one simulation, the horizontal grid resolution is increased to  $\Delta x^+ = 5.9$  and  $\Delta z^+ = 2.9$  while the domain size is kept to  $L_x/h = 8\pi$  and  $L_z/h = 4\pi$ . For the other simulation, the horizontal grid resolution is fixed to  $\Delta x^+ = 8.8$  and  $\Delta z^+ = 4.4$ , but the domain size is enlarged to  $L_x/h = 12\pi$  and  $L_z/h = 6\pi$ . Other simulation configurations are identical to the S120 case in Table 1. The simulations are run for 10 non-dimensional time. Fig. A3 shows the time-series of vertical velocity and contours of  $v'^2$  at a  $x$ - $z$  plane for these two simulations. Qualitatively, the spatio-temporal characteristics of intermittency, i.e., the oblique turbulence band and the height-dependency of temporal intermittency, are similar to what was observed in Figs. 4 and 8. The control grid resolution and domain size in Table 1 are thus expected to be sufficient to resolve and accommodate the spatio-temporal evolution of intermittent turbulence. ”

In summary, based on the above results, it is safe to conclude that the simulated intermittency in the current paper is of physical instead of numerical artifacts. There is no indication of non-physical oscillations or numerical diffusion in the simulated results. We are confident that the current grid resolution is sufficient to capture the characteristics of intermittent turbulence.

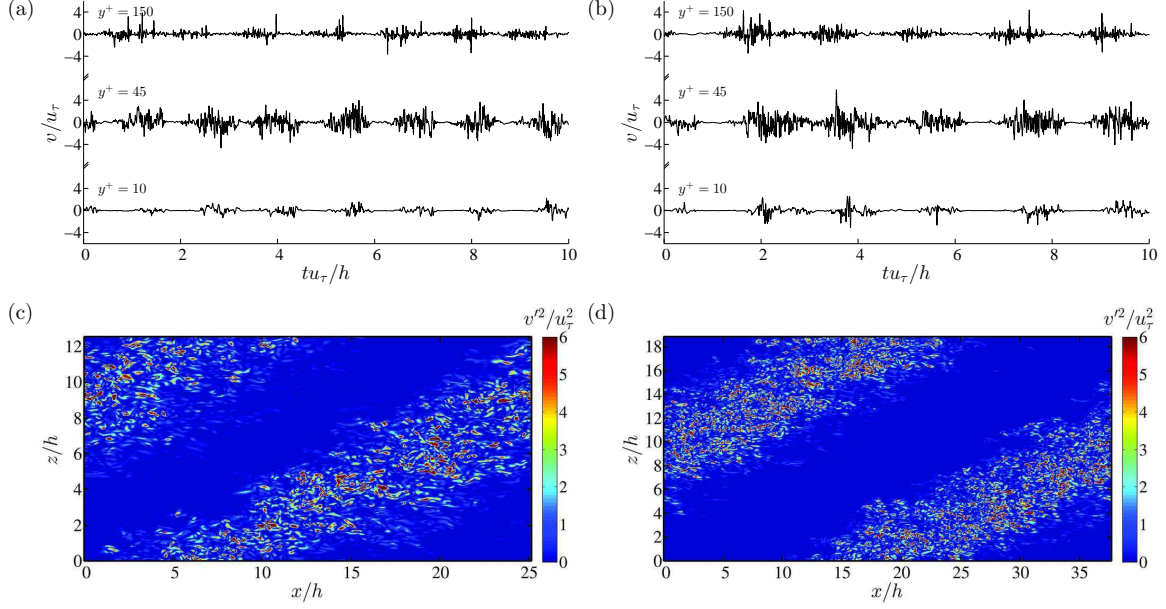


Figure A3: Influence of simulation configurations on the spatio-temporal characteristics of intermittency ( $Re_\tau = 180$ ,  $Ri_\tau = 120$ ). (a) and (b) are time-series of vertical velocity in the channel; (c) and (d) are instantaneous contours of  $v'^2$  at the  $x$ - $z$  plane located at  $y^+ = 45$ . For (a) and (c), the horizontal grid resolutions are  $\Delta x^+ = 5.9$  and  $\Delta z^+ = 2.9$ , and the domain sizes are  $L_x/h = 8\pi$  and  $L_z/h = 4\pi$ ; for (b) and (d), the horizontal grid resolutions are  $\Delta x^+ = 8.8$  and  $\Delta z^+ = 4.4$ , and the domain sizes are  $L_x/h = 12\pi$  and  $L_z/h = 6\pi$ .

#### Reference:

Brethouwer, G., Duguet, Y., and Schlatter, P.: Turbulent–laminar coexistence in wall flows with Coriolis, buoyancy or Lorentz forces, *J. Fluid Mech.*, 704, 137–172, 2012.

3) Choice of computational domain and grid As noted above, the DNS itself is very sensitive to numerical setup and prone to numerical artifacts. Thus one of the things I am missing in this specific case is a kind of sensitivity test to these factors. In the presented case all the simulations were performed on a computational domain of the same length using a periodic boundary conditions. Using this setup the simulation leads to occurrence of periodic (or better to say) recurring phenomena in the computational field, however there is no clear evidence on if (how much) these events depend on specific computational setup. Will the spatio-temporal evolution be affected by a change of size or aspect ratio of the computational domain or by the grid resolution? Without such a verification I will hesitate to accept all the observed phenomena as being really physical.

Please see our response to point 2. The control domain size is shown to be sufficient to accommodate the spatio-temporal evolution of intermittent turbulence.

4) Grid resolution versus accuracy The authors opted for a numerical solver using a second order accurate discretization for both spatial and temporal derivatives. It's a question if this level of numerical accuracy is sufficient for reliable DNS simulations. It would be nice to have at least some references based evidence for similar cases that second order method (for given grid resolution) is enough to properly capture and resolve such fine scale and low amplitude events as those intermittent bursts studied here. The details on available DNS simulations given in Table 2, page 215, shows for example information about grid cell sizes, but fails to show what was the order of accuracy for the applied numerical method. The combination of grid resolution together with the order of accuracy is what defines the size of the error. So the grid resolution that is sufficient for one numerical method (for a given case being solved) doesn't necessarily has to be sufficient

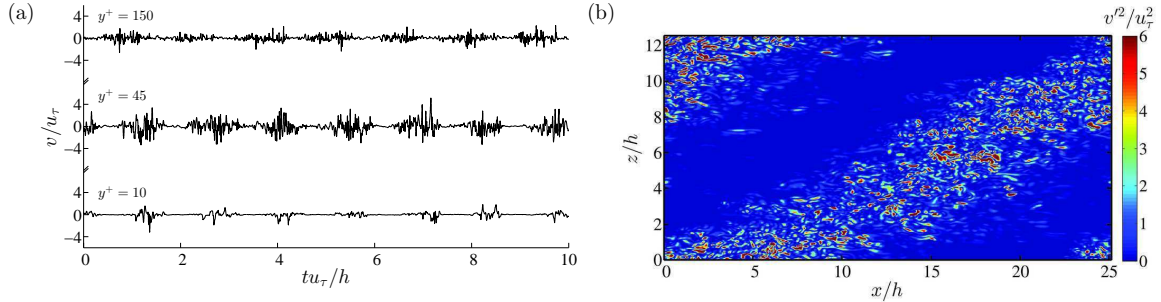


Figure B1: Influence of time step on the spatio-temporal characteristics of intermittency ( $Re_\tau = 180$ ,  $Ri_\tau = 120$ ). (a) time-series of vertical velocity in the channel; (b) instantaneous contours of  $v^2$  at the  $x$ - $z$  plane located at  $y^+ = 45$ . The time step is reduced to 20% of the value used in the S120 case.

for another numerical method. So again, the independence of the presented numerical results on the chosen spatial (and temporal) cell sizes is not clearly demonstrated.

We have added the information for grid resolution and order of accuracy for the finite-volume and finite-difference methods in Table 2 as suggested.

It is true that the second-order spatial discretization may introduce uncertainty if the grid resolution is insufficient. However, as mentioned above, we have compared the current DNS results with the benchmark DNS results using spectral method. In addition, we added an appendix to further evaluate the impact of grid resolution on the simulated spatio-temporal characteristics of intermittency. There is no indication that the current control grid resolution is insufficient. Furthermore, it is important to note that this study focuses on the characteristic of global (large-scale) intermittency instead of small-scale (inertial-scale) intermittency, the second order spatial discretization is expected to be sufficient to capture large-scale evolution of spatio-temporal intermittency with the current grid resolution (Nieuwstadt, 2005). Please note that with a similar grid resolution, the second-order spatial discretization has been used in DNS studies for both neutrally stratified (Bernardini et al., 2014) and stably stratified (Nieuwstadt, 2005) channel flows.

Regarding the impact of time step on our simulation results, we conducted another simulation with the time step reduced to 20% of value used in the S120 case, as can be seen in Fig. 2. Again, no significant difference is observed between Fig. 2 and those shown in Figs. 4 and 8 in the revised manuscript. To avoid redundancy, we did not include this figure in the revised manuscript.

Reference:

Nieuwstadt, F. T. M.: Direct numerical simulation of stable channel flow at large stability, *Bound.-Lay. Meteorol.*, 116, 277–299, 2005.

Bernardini, M. and Pirozzoli, S. and Orlandi, P.: Velocity statistics in turbulent channel flow up to  $Re_\tau = 4000$ , *J. Fluid Mech.*, 742, 171–191, 2014.

To sum up the comments, the problem is interesting, chosen approach seems to be appropriate, but the numerical results are not convincing and insufficient to support (without any doubts) the conclusions given by authors. I recommend the paper to be revised before being reconsidered for publication. I hope these comments will help the authors to improve their manuscript.

Based on the reviewer’s suggestions, we have conducted additional simulations to further confirm that the simulation configurations, i.e., grid resolution, domain size, are sufficient for capturing the spatio-temporal characteristics of intermittency. We believe that the new results improve the robustness of our numerical methods and further support the conclusions drawn in the paper.

## Response to the reviewer 2's comments

The paper addresses a very important point in prediction of environmental flows in general and here aimed towards the understanding of Stratified Atmospheric Wind Behaviour.

The authors simulate intermittent turbulence ( as they loosely identify also as bursting events)They compare field situations in a wide range of conditions as they comment that "This type of non-stationary time-series has been widely observed in geographically and climatologically diverse regions around the world."

We would like to thank the reviewer for his/her comments for our paper. We have revised the manuscript and clarified the definition of intermittency as suggested. In the following, we respond point-by-point to the reviewer's remarks (colored in blue).

In spite of the interest and the new work reflected in the paper. The paper does not define in a clear way the different methods used in the literature to describe and define intermittency.

The long -lasting multiplicity of definitions could be clarified for the benefit of the readers, specially the new-comers from diferent aspects of the study of stratified flows.

We agree with the reviewer that there is a confusion in the turbulence literature in the exact definition of "intermittency". Most of the time, the physics community utilizes this term to signify "small-scale (inertial-range and/or dissipation-range) intermittency". Classic references on this topic include (but not limited to): Kolmogorov (1962), chapter 8 of Frisch (1995), Bohr et al. (1998), chapter 7 of Tsinober (2001). The co-author (Basu) has also contributed in this line of turbulence scaling research: Basu et al. (2007). However, the word "intermittency" can also be used to describe "external or global intermittency". Classic references on this topic include (but not limited to): Townsend (1948), Mahrt (1989), Garcia-Villalba and del Alamo (2011), Brethouwer et al. (2012).

Following the reviewer's recommendation, we have added a paragraph on the definition of intermittency at the beginning of our paper. As such, we decided to cite Tsinober (1998) verbatim since he distinguishes the two types of intermittency in a very succinct manner:

"The term intermittency is used in two distinct (but not independent) aspects of turbulent flows. The first one is the so-called external intermittency. It is associated with what is called here partially turbulent flows, specifically with the strongly irregular and convoluted structure and random movement of the 'boundary' between the turbulent and nonturbulent fluid... The second aspect is the so-called small scale, internal or intrinsic intermittency. It is usually associated with the tendency to spatial and temporal localization of the "fine" or small scale structure(s) of turbulent flows".

We added appropriate references for both types of intermittency and emphasized that the current paper is on external or global intermittency.

References:

Basu, S., Fofoula-Georgiou, E., Lashermes, B., and Arneodo, A. (2007). "Estimating intermittency exponent in neutrally stratified atmospheric surface layer flows: A robust framework based on magnitude cumulant and surrogate analyses", *Phys. Fluids*, 19, 115102.

Bohr, T., Jensen, M. H., Paladin, G., and Vulpiani, A. (1998). *Dynamical systems approach to turbulence*, Cambridge University Press, 350 pp.

Brethouwer, G., Duguet, Y., and Schlatter, P. (2012). "Turbulent-laminar coexistence in wall flows with Coriolis, buoyancy or Lorentz forces", *J. Fluid Mech.*, 704, 137-172.

Frisch, U. (1995). *Turbulence: The legacy of A. N. Kolmogorov*, Cambridge University Press, 296 pp.

García-Villalba, M. and del Álamo, J. C. (2011). “Turbulence modification by stable stratification in channel flow”, *Phys. Fluids*, 23, p. 045104.

Kolmogorov, A. N. (1962). “A refinement of previous hypotheses concerning the local structure of turbulence in a viscous incompressible fluid at high Reynolds number”, *J. Fluid Mech.*, 13, 82-85.

Mahrt, L. (1989). “Intermittency of atmospheric turbulence”, *J. Atmos. Sci.*, 46, 79–95.

Townsend, A. A. (1948). “Local isotropy in the turbulent wake of cylinder”, *Austr. J. Sci. Res.*, 1, 161-174.

Tsinober, A. (2001). *An informal introduction to turbulence*, Kluwer Academic Publishers, 324 pp.

Basic definitions and references from (Kolmogorov 1962),... (noting that scaling at small scales of turbulence provides a key definition as (2 minus the sixth order velocity structure functions) only if the turbulent flow is local !.

The added complexities of the appearance of internal waves in stratified flows still cast a doubt of whether the spectra at small scales increases or decreases its slope?

This specific comment of the reviewer is in the context of small-scale intermittency. One of the most widely used statistics characterizing the intermittent nature of small-scale turbulence is the so-called “intermittency exponent” (denoted by  $\mu$ ). From observational and/or simulated data,  $\mu$  can be estimated directly or indirectly via several methods. The reviewer mentioned the well-known sixth-order velocity structure function approach (see Anselmet et al. 1984). Other competing estimation approaches have been proposed in the literature. For example, the co-author (Basu) proposed a magnitude cumulant based approach (Basu et al. 2007) a few years ago.

In spite of our background and prior publication in this line of scaling research, we intentionally refrained from including  $\mu$ -related information in our work. As mentioned before, our present work is on external or global intermittency. For this case,  $\mu$  is not a relevant statistic for the quantification of intermittency.

Our paper does document the existence of internal waves in DNS-generated data (see page 14). The influence of internal waves on small-scale intermittency is an intriguing topic and has not been studied (to the best of our knowledge). This topic will be addressed in our future work.

References: Anselmet, F., Gagne, Y., Hopfinger, E. J., and Antonia, R. A. (1984) “High-order velocity structure functions in turbulent shear flows,” *J. Fluid Mech.* 140, 63.

The extraction and comparison of intermittency related effects and descriptors in stably stratified open-channel flows using direct numerical simulation (Open Foam) is important and could clarify the many previous observations and methods previously used and discussed in the literature. Further references would be interesting.

We thank the reviewer for commenting on the importance of our DNS work. Traditionally, DNS is only used as a tool for fundamental fluid mechanics studies. In this work, we attempted to make the simulated results more relevant for atmospheric boundary layer studies.

As the Authors claim “Clear signatures of this intriguing phenomenon are observed for a range of stabilities. However, the spatio-temporal characteristics of intermittency are found to be strongly stability-dependent. In general, the bursting events occur often near the bottom wall than in the upper-channel region.”

The lax definitions used and the effects at large scales, at integral scales and at cascade or dissipative scales are confused often in the literature, but the paper does not attempt to clarify the issues.

At the beginning of the paper, we have clearly distinguished between external intermittency and small-scale (inertial-range and dissipation-range) intermittency. Furthermore, we have now clarified that we are not



focusing on small-scale intermittency. We sincerely hope that readers find our modified text to be clear and easy to follow.

It even attempts a Reynolds number dependent intermittency as ” A steady coexistence of laminar and turbulent flows is almost always detected at various horizontal planes. This spatially intermittent pattern is found to propagate downstream and strongly correlate with the temporal evolution of intermittency. The forcing of the flow may be a cause or an effect, and it seems that this is not clear !, even in the definitions.

In this study, we addressed a fundamental question: is intermittent turbulence an inherent property of stably stratified boundary layer flows? That is to say, we would like to find out if this phenomenon can be simulated in the absence of any external forcings (e.g., topography, Coriolis force and associated inertial oscillation, mesoscale atmospheric phenomena). In other words, external forcing is not pertinent for our study. This information appears on page 3.

The hypothesis by Blackadar(1979), strong connection between local stability and intermittent turbulence, is claimed to be corroborated by this modeling study, but this would occur due to internal wave ( or coherent structure ) resonance.

Our DNS results indicate that there is a coexistence of significant wave activity and intermittent turbulence in stably stratified flows. However, the strong spatial-correlation between the low/high  $Ri_{qi}$  and the turbulent/laminar regions, observed at the central-channel, strongly corroborates the Blackadar’s hypothesis.

The existence of global intermittency (Mahrt, 1989) (also known as turbulent bursting events) in the atmospheric boundary layer (ABL) is well known but very often confused.

Intermittent turbulence is usually characterized as alternately quiescent and bursty portions of an observed time-series, representing laminar and turbulent states of the ABL flow, respectively, but this Reynolds number effect may be just forcing intermittency, or due to a larger scale effect or resonance. Stratification itself introduces internal Non-Linear waves, the spectral regions between integral and Taylor microscales may behave one way, while the dissipation range turbulence has another type of intermittency ( at small scale !)

At the beginning of the paper, we have clearly distinguished between external intermittency (aka global intermittency) and small-scale intermittency. In other words, we have now clarified that we are not focusing on inertial-range and dissipation-range intermittency.

Intermittent turbulence was generated in wind-tunnel experiments under idealized settings may be used to compare loose definitions such as: TBE, TF, Ratio of vertical velocity variance,... PDF Kurtosis, Scaling exponents, Modulation of Gradient  $Ri$ ,... etc.

Several wind tunnel studies (e.g., Modane wind tunnel) have documented small-scale intermittency in turbulent flows. However, to the best of our knowledge, external or global intermittency in stratified flows has only been reported by Ohya et al., 2008 in his wind tunnel experiments. Since Ohya et al. considered low-level jet type of velocity profiles in his experiments (i.e., external forcings), our results cannot be compared with his data in a quantitative manner. Furthermore, since our paper is on global intermittency, we do not report PDF Kurtosis, scaling exponents, etc.

As the Authors discuss, It is well known ”That intermittent turbulence is a truly multiscale (bursting duration ranging from seconds to hours) and a dynamically complicated (and perhaps complex) phenomenon. It is also known in the literature that this phenomenon portrays intriguing spatial characteristics” ( also temporal !)

With these considerations in mind and considering that the paper performs DNS using OpenFoam, by running an statistical ensemble of cases, the paper could attempt to clarify these controversial issues ( separating effects like due to non-stationarity, to non- homogeneity (different in the vertical/horizontal. even non-locality and 3D and 2D effects. The large potential of this paper is to clarify both the definitions, the ranges, the effects and the causes of intermittency.

In this paper, we characterized global intermittency in a comprehensive manner. We documented various traits of spatial intermittency. As emphasized by the reviewer, we also documented various aspects of “temporal” intermittency throughout the paper. We also provided quantification of intermittency (e.g., intermittency factor) and correlated with relevant fluid properties (e.g., Richardson number).

The stress on the large scale (or forcing intermittency) should be made clearer pointing out the comparison of the simulation conditions with the range of real conditions in the Atmosphere, Many relevant measurements of high frequency in the ABL under stratified conditions (e.g. SABLES, SHEEBA,.. Antarctic wind data,... ) have been parametrized. How do the DNS compare with the scope of existing intermittency data.

In this study, we try to address a fundamental question: is intermittent turbulence an inherent property of stably stratified boundary layer flows? That is to say, we try to find out if this phenomenon can be simulated in the absence of any external forcings (e.g., topography, Coriolis force and associated inertial oscillation, mesoscale atmospheric phenomena). In the case of real conditions, various atmospheric phenomena (e.g., low-level jets, density current, gravity waves) will further modulate intermittency. At present, only a handful of these processes can be incorporated in a DNS. For example, Werne et al., 2007 studied the wind shear instability and wave-breaking using DNS, and analyzed their impacts on optical turbulence. García-Villalba, and del Álamo, 2008 simulated gravity waves in stably stratified flows and discussed their impacts on turbulence structures. Even though these types of idealized simulations cannot capture all the complexities of the atmosphere, they can provide non-trivial information. For example, the vertical variation of bursting events, reported in this study, qualitatively agreed with field observation from the CASES-99 study (Nakamura and Mahrt, 2005).

In conclusion, our paper solely focuses on global intermittency in stratified flows. As such, we refrained from any discussion on small-scale intermittency. We sincerely hope that the revised text in the Introduction makes this aspect of our paper clear.

References:

García-Villalba, M., and del Álamo, J. C.: Turbulence and Internal Waves in a Stably Stratified Channel Flow. *High Performance Computing in Science and Engineering*. Springer, pp. 217–227, 2008.

Werne, J., Fritts, D., Lund, T.: *Simulations and Data Analysis for Air Force Optical Turbulence Forecasting Applications*. AFRL-VS-HA-TR-2007-1059, 2007.

Nakamura, R. and Mahrt, L.: A Study of Intermittent Turbulence with CASES-99 Tower Measurements, *Bound.-Lay. Meteorol.*, 114, 367–387, 2005.



Manuscript prepared for Nonlin. Processes Geophys. Discuss.  
with version 2014/09/16 7.15 Copernicus papers of the  $\LaTeX$  class copernicus.cls.  
Date: 15 June 2015

# Direct numerical simulation of intermittent turbulence under stably stratified conditions

**P. He and S. Basu**

Department of Marine, Earth, and Atmospheric Sciences, North Carolina State University, Raleigh, North Carolina, 27695, USA

Correspondence to: P. He (phe3@ncsu.edu)

## Abstract

In this paper, we simulate intermittent turbulence (also known as bursting events) in stably stratified open-channel flows using direct numerical simulation. Clear signatures of this intriguing phenomenon are observed for a range of stabilities. However, the spatio-temporal characteristics of intermittency are found to be strongly stability-dependent. In general, the bursting events are much more frequent near the bottom wall than in the upper-channel region. A steady coexistence of laminar and turbulent flows is detected at various horizontal planes in very stable cases. This spatially intermittent pattern is found to propagate downstream and strongly correlate with the temporal evolution of intermittency. Last, a long standing hypothesis by Blackadar, i.e., the strong connection between local stability and intermittent turbulence, is corroborated by this modeling study.

## 1 Introduction

The term “intermittency” has different connotations in various scientific communities. Even among the turbulence researchers, it does not have a unique definition. Tsinober (2001) attempted to distinguish between the two most common usages of intermittency in a very succinct manner:

“The term intermittency is used in two distinct (but not independent) aspects of turbulent flows. The first one is the so-called external intermittency. It is associated with what is called here partially turbulent flows, specifically with the strongly irregular and convoluted structure and random movement of the “boundary” between the turbulent and nonturbulent fluid. The second aspect is the so-called small scale, internal or intrinsic intermittency. It is usually associated with the tendency to spatial and temporal localization of the “fine” or small scale structure(s) of turbulent flows.”

There is an extensive literature on small-scale intermittency. A wide range of conceptual models (e.g., multifractal model) have been proposed to explain various traits of intermit-

Discussion Paper | Discussion Paper | Discussion Paper

tency. Chapter 8 of Frisch (1995) provides an excellent review on this topic. We would like to note that the present study does not contribute to this research arena. Instead, it focuses on the global (aka external) intermittency.

Townsend (1948) was one of the first to report global intermittency in a laboratory experiment. Its existence was also well documented in the atmospheric boundary layer (ABL) literature (e.g., Mahrt, 1989; Sun et al., 2002, 2004; Nakamura and Mahrt, 2005). Global intermittent turbulence (aka turbulent bursting events) is usually characterized as alternately quiescent and bursty portions of an observed time-series, representing laminar and turbulent states of the ABL flow, respectively. This type of non-stationary time-series has been widely observed in geographically and climatologically diverse regions around the world. For example, they were observed in the field experiments in Kansas, USA (Nakamura and Mahrt, 2005), Cabauw, the Netherlands (Holtslag et al., 2013), and Summit, Greenland (Cullen et al., 2007) (see Fig. 1a–c). In addition, intermittent turbulence was generated in wind-tunnel experiments under idealized settings (Ohya et al., 2008) (see Fig. 1d). From Fig. 1, one appreciates the fact that intermittent turbulence is a truly multiscale (bursting duration ranging from seconds to hours) and a dynamically complicated (and perhaps complex) phenomenon. It is also known in the literature that this phenomenon portrays intriguing spatio-temporal characteristics (Coulter and Doran, 2002).

Quantification of spatio-temporal characteristics of intermittent turbulence is of considerable importance from practical standpoints. For example, it has been shown that the turbulent bursts can cause unusually high concentration of surface layer ozone by transporting it from higher altitudes in the ABL (Salmond and McKendry, 2005). It has also been speculated that these events might be causing excessive fatigue damage to wind turbines located in the US Great Plains (Park et al., 2013). Furthermore, these episodic events have been associated with the degradation of the performance of astronomical telescopes as they tend to generate excessive optical turbulence (Lawrence et al., 2004).

Given its ubiquitous occurrence and practical importance, much effort has been devoted to investigate the characteristics and generation mechanism of intermittent turbulence. In the recent years, various mesoscale atmospheric phenomena, including (but not limited

to) low-level jets (LLJ) (Sun et al., 2002), density currents (Sun et al., 2002), and gravity waves (Sun et al., 2004), were identified as possible triggers for turbulent bursts. Even though these physical processes are extremely relevant for atmospheric intermittent turbulence generation, in this study, we would like to address a more fundamental question: is intermittent turbulence an inherent property of stably stratified boundary layer flows? That is to say, we would like to find out if this phenomenon can be simulated in the absence of any external forcings (e.g., topography, Coriolis force and associated inertial oscillation, mesoscale atmospheric phenomena). In some way, our investigation can be perceived as a numerical testing of an age-old hypothesis by Blackadar (1979).

Several decades ago, Blackadar associated the occurrence of intermittent turbulence with the modulation of gradient Richardson number (a stability parameter reflecting the balance between buoyancy and shear). He hypothesized that under stably stratified conditions, a turbulent flow becomes laminarized when the buoyancy forcing strongly dominates over shear causing the gradient Richardson number to exceed a critical value. The resulting reduction in turbulent mixing leads to flow acceleration and, in turn, triggers a turbulent burst. In nature, this decaying and bursting process can occur repeatedly generating turbulent intermittency (Businger, 1973; Stull, 1988; Mahrt, 1999). To the best of our knowledge, this hypothesis by Blackadar has not been confirmed using high-fidelity modeling approaches such as direct numerical simulation (DNS) or large-eddy simulation (LES). However, the wind-tunnel experiments by Ohya et al. (2008) seem to corroborate this hypothesis. The signatures of bursting events are very clear in their data (see Fig. 1d). However, Ohya et al. utilized a LLJ-type velocity profile to mimic typical nocturnal ABL flows over land. It is possible that this velocity profile played a significant role in triggering the intermittent events. To avoid any ambiguity, in the present study, we will refrain from using any artificial profiles or boundary/forcing conditions in our numerical simulations.

At present, LES is one of the most efficient computational techniques available for high Reynolds number turbulent flow simulations. However, its applicability to simulate strongly stratified flows has remained an unsettled issue (Basu and Porté-Agel, 2006; Flores and Riley, 2011). Furthermore, it is well-known in the literature that the LES-based flow charac-

teristics are strongly dependent on the employed subgrid-scale (SGS) model, spatial resolution, filter type, etc. To circumvent these ad-hoc numerical influences, in this study we opt to use a viable alternative: the DNS approach. In this approach, the Navier–Stokes (N–S) equations are solved without any averaging, any filtering, or any other approximations for turbulence. Owing to its precise representation of the N–S equations, the DNS-generated datasets are considered to be of extremely high fidelity and are utilized to provide a better physical understanding of various types of turbulent flows (see the review by Moin and Mahesh, 1998). Unfortunately, due to exorbitant computational costs, the DNS approach is limited to low Reynolds number flows. Despite this unavoidable limitation, we are hopeful that the DNS approach will enable us to answer our posed question in an unequivocal manner.

During the past decades, several DNS studies focused on the turbulence laminarization problem under stably stratified conditions (Garg et al., 2000; Barnard, 2000; Iida et al., 2002; Nieuwstadt, 2005; Flores and Riley, 2011; García-Villalba and del Álamo, 2011; Brethouwer et al., 2012; Ansonge and Mellado, 2014). Some of these studies discussed the transient nature of the laminarization phenomenon; a few of them documented steady coexistence of laminar and turbulent flows; and a handful of these studies proposed certain criteria for turbulence decay. Below, we briefly summarize some of these relevant works as the present study borrows scientific ideas and numerical strategies from them.

Nieuwstadt (2005) investigated the maximum level of stratification that a turbulent flow can survive in an open-channel. He proposed a stability parameter ( $h/L_N$ ) to probe this problem; it was found that turbulence intensity decayed rapidly with  $h/L_N > 1.25$ . Iida et al. (2002) studied the turbulence suppression in stratified channel flows, and it was indicated that, with increasing friction Richardson number ( $Ri_\tau = \Delta\rho gh/\rho_0 u_\tau^2$  with  $u_\tau$  the friction velocity), the flow became laminar on one wall while it was still turbulent on the other wall. Partial laminarization phenomenon was also observed in Flores and Riley (2011); however, the laminarization was transient due to the limited computational domain size. Domain size sensitivity was later discussed by García-Villalba and del Álamo (2011). The authors found that the turbulence was nonstationary with a domain size of  $4\pi h \times 2h \times 2\pi h$  and  $Ri_\tau > 60$ .

With increasing the domain size to  $18\pi h \times 2h \times 8\pi h$ , the turbulence became stationary even with a relatively high friction Richardson number ( $Ri_\tau = 480$ ), and turbulent-laminar patches were also observed in the channel. The coexistence of laminar and turbulent flows in a stably stratified open-channel was further studied by Brethouwer et al. (2012). The authors found that the laminar and turbulent flows can stably coexist within a wide range of Reynolds number and Richardson number. Intriguing spatial intermittency was also observed by Ansorge and Mellado (2014) in their DNS study of stably stratified Ekman layer. Similar to Nieuwstadt (2005) and Flores and Riley (2011), a transient process of turbulence collapse and recovery was generated by imposing a suddenly cooled surface to a neutrally stratified flow field. Spatial characteristic of intermittent turbulence was then analyzed in detail during this transient process. However, whether the spatial pattern of intermittency can persist in long-term was not discussed in the paper. Barnard (2000) performed a DNS study of intermittent turbulence in a stratified Ekman layer and intermittent time-series of vertical velocity and heat flux were documented. He proposed that the intermittent turbulence originated from the Ekman instability that lifted colder air over warmer air. Since this proposed mechanism is modulated by inertial oscillation, it is not effective in the absence of the Coriolis force.

Since the coexistence of laminar and turbulent flows has been observed in the papers by Flores and Riley (2011), García-Villalba and del Álamo (2011), Brethouwer et al. (2012) and Ansorge and Mellado (2014), we speculate that the time variation of velocity, temperature, and fluxes in a channel should manifest temporal intermittency. Unfortunately, no such results were documented in those studies. We would like to emphasize that the field experimental studies (Sun et al., 2002, 2004; Nakamura and Mahrt, 2005; Cullen et al., 2007; Coulter and Doran, 2002) almost always elaborate on temporal intermittency. Thus, there is a need for documenting simulated temporal intermittency results in order to make the DNS studies relevant to the ABL research. In the present study, we fill that void by presenting time-series and time-height plots of several variables. In addition, we quantify the spatio-temporal characteristics of intermittent turbulence in stably stratified channel flows. Most importantly, we investigate (i) if intermittent turbulence can be generated in the absence of

any external forcings, (ii) if our DNS results can corroborate Blackadar’s hypothesis, i.e., the strong correlation between local stability and turbulence intermittency.

The structure of this paper is as follows: in Sect. 2, we introduce the numerical method and summarize the computational configurations and modeling details. Spatio-temporal characteristics of intermittent turbulence are documented in Sect. 3. In this section, we also discuss the relationship between local stability and intermittent turbulence, as well as the sensitivity to Reynolds number. In Sect. 4, the conclusions and future directions are stated. Finally, verification for the DNS solver is performed in Appendix A.

## 2 Method

In this paper, the incompressible turbulent flow in a plane open-channel is studied under stably stratified conditions with three friction Reynolds numbers ( $Re_\tau = 180, 395, \text{ and } 550$ ). The friction Reynolds number,  $Re_\tau = u_\tau h / \nu$ , is based on the open-channel height ( $h$ ) and the friction velocity  $u_\tau = \sqrt{\tau_w / \rho_0}$ , where  $\nu$  is kinematic viscosity,  $\tau_w$  is wall shear stress, and  $\rho_0$  is reference density. Several stratification levels are considered by imposing different friction Richardson numbers  $Ri_\tau = \Delta \rho g h / \rho_0 u_\tau^2$ , where  $\Delta \rho$  is the density difference between the top and the bottom walls, and  $g$  denotes gravitational acceleration. In this study, seven simulations are performed with a wide range of friction Richardson numbers (cases S0–S2880 in Table 1). It is important to note that the open-channel flow is equivalent to a  $y$ -symmetrized (closed-channel) plane Poiseuille flow; however, the definitions of the friction Richardson number in these two cases are slightly different. The conventional definition for  $Ri_\tau$  in closed-channel flows (Armenio and Sarkar, 2002; García-Villalba and del Álamo, 2011) is two times larger than the definition used here for open-channel flows. In other words, the stratification level with  $Ri_\tau = 240$  in a closed-channel is similar to that in open-channel flows with  $Ri_\tau = 120$ .

According to García-Villalba and del Álamo (2011), a large domain is needed to simulate stably stratified flows with high friction Richardson numbers. For the current study, the domain size is chosen to be  $L_x \times L_y \times L_z = 8\pi h \times h \times 4\pi h$ . Here,  $L_x, L_y, L_z$  are the domain



lengths in the streamwise ( $x$ ), vertical ( $y$ ), and spanwise ( $z$ ) directions, respectively (see Fig. 2). This domain size is shown to be sufficient to accommodate the spatio-temporal evolution of intermittent turbulence (please refer to the detailed discussion in Appendix B). The grid distributions in the streamwise and spanwise directions are uniform. To fully resolve turbulence in near-wall regions, the first grid level near the bottom wall is located at  $y^+ = 0.1$ , and 15 grids are set within  $y^+ < 10$ , where  $y^+$  is the normalized grid distance from the bottom wall,  $y^+ = yu_\tau/\nu$ . A summary of the simulation configurations can be found in Table 1.

Under the Boussinesq approximation, the governing Navier–Stokes and the scalar transport equations are presented in Eqs. (1)–(3). The governing equations are normalized by  $h$  and  $u_\tau$  (e.g.,  $u_i^* = u_i/u_\tau$ ,  $x_i^* = x_i/h$ ). We consider stably stratified air flow, so Prandtl number,  $Pr = \nu/\kappa$ , is set to 0.71. The temperature and density are normalized as  $T^* = (T - T_{\text{top}})/(T_{\text{top}} - T_{\text{bot}})$ ,  $\rho^* = (\rho - \rho_{\text{top}})/(\rho_{\text{bot}} - \rho_{\text{top}})$ , respectively, where the top and bot subscripts represent the top and bottom walls, respectively.  $\Delta P^*$  is the streamwise pressure gradient driving the flow and  $p^*$  is the dynamic pressure.

$$\frac{\partial u_j^*}{\partial x_j^*} = 0 \quad (1)$$

$$\frac{\partial u_i^*}{\partial t^*} + \frac{\partial u_i^* u_j^*}{\partial x_j^*} = -\frac{\partial p^*}{\partial x_i^*} + \Delta P^* \delta_{i1} - Ri_\tau \rho^* \delta_{i3} + \frac{1}{Re_\tau} \frac{\partial}{\partial x_j^*} \frac{\partial u_i^*}{\partial x_j^*} \quad (2)$$

$$\frac{\partial T^*}{\partial t^*} + \frac{\partial T^* u_j^*}{\partial x_j^*} = \frac{1}{Re_\tau Pr} \frac{\partial}{\partial x_j^*} \frac{\partial T^*}{\partial x_j^*} \quad (3)$$

The DNS solver used here is based on an open source CFD package called OpenFOAM. OpenFOAM has been well verified for a number of scientific and engineering applications (Flores et al., 2013; Hoang et al., 2013). The governing equations are discretized using the finite-volume method. The spatial and temporal derivatives are discretized with the second-order central scheme and implicit second-order backward scheme, respectively (OpenFOAM, 2015). The pressure equation is solved using pressure implicit with splitting

of operators (PISO) algorithm (Issa, 1986). Periodic boundary conditions are prescribed along the streamwise and spanwise boundaries. A non-slip boundary condition ( $u^*$ ,  $v^*$ ,  $w^* = 0$ ) is specified at the bottom wall ( $y^* = 0$ ), whereas at the top wall ( $y^* = 1$ ), a free-slip boundary condition is imposed ( $\partial u^*/\partial y^* = 0$ ,  $v^* = 0$ ,  $\partial w^*/\partial y^* = 0$ ). Here  $u^*$ ,  $v^*$ , and  $w^*$  are streamwise, vertical, and spanwise normalized velocity components, respectively. Fixed normalized temperatures ( $T_{\text{top}}^* = 0$ ,  $T_{\text{bot}}^* = -1$ ) are also prescribed along the top and the bottom walls. For the neutrally stratified case ( $Ri_\tau = 0$ ), the buoyancy term (the third term on the right hand side of Eq. 2) is removed from the momentum equation. Under this scenario, the temperature equation actually represents the transport of a passive scalar.

In order to obtain initial conditions for the simulations, coarse-resolution cases are run for about 200 non-dimensional time units (i.e.,  $tu_\tau/h \approx 200$ ) to obtain quasi-stationary flow fields. Then the flow variables are interpolated to fine-resolution initial fields. For the cases with  $Re_\tau = 180$ , the simulations are conducted for 50 non-dimensional time to obtain the mean flow and turbulence statistics profiles, as well as time-series results. For  $Re_\tau = 395$  and 550, the simulations are run for 10 non-dimensional time.

According to Kim et al. (1987) and Spalart (1988), in order to fully resolve the wall-bounded turbulence using spectral methods, the streamwise and spanwise grid resolutions should satisfy  $\Delta x^+ < 15$  and  $\Delta z^+ < 8$ . One would expect the corresponding requirement for a finite-volume solver to be more stringent. In the current study, our analyses mainly focus on the cases with  $Re_\tau = 180$ . In lieu of any established criteria for DNS grid resolutions, we wanted to get some guidance from the literature. So, we summarized different grid resolutions used in the past DNS studies of neutral and stratified channel flows in Table 2. Then, to be on the conservative side, we chose a relatively fine grid resolution reported in Table 2 for the present study. Several verification cases (cases V1–V5 in Table 1) are conducted which shows that the simulation results from the current solver agree well with the benchmark results for both neutral and stratified cases (see Appendix A for details). In addition, we increase the horizontal grid resolution by 50% and no essential change is observed in the simulation results (see Appendix B). These results indicate that the grid resolution, employed in this study for  $Re_\tau = 180$ , is sufficient for the DNS of stably stratified flows. In

order to evaluate the impact of Reynolds number on our key findings, we also conduct two additional simulations with  $Re_\tau = 395$  and  $550$ . The grid resolutions for  $Re_\tau = 395$  are similar to those used for  $Re_\tau = 180$  (see Table 1); however, for  $Re_\tau = 550$ , a relatively coarse resolution is used. For the case with  $Re_\tau = 550$ , an estimation of the ratio of grid size to Kolmogorov length scale following Nieuwstadt (2005) shows that  $\Delta x \approx 7\eta$  and  $\Delta z \approx 3.5\eta$ , where  $\eta$  is the Kolmogorov length scale. Although these grid sizes are near the lower limit of DNS resolution (Moin and Mahesh, 1998), it is nevertheless acceptable for a qualitative estimation of the impact of Reynolds numbers in the current study.

### 3 Results

According to the linear stability theory in Gage and Reid (1968), the Poiseuille channel flow is stable for approximately  $Ri_\tau > 900$  at  $Re_\tau = 180$ . As was mentioned in Sect. 2, this corresponds to about  $Ri_\tau > 450$  for open-channel flows at the same Reynolds number. Taking this into account, a wide range of stratification levels, i.e., from neutral ( $Ri_\tau = 0$ ) to very stable ( $Ri_\tau = 480$ ), are considered in this section in order to obtain comprehensive characteristics of intermittent turbulence at  $Re_\tau = 180$ . Specifically, time-series and time-height plots are presented to delineate the temporal variations of turbulence with various stratification levels. In parallel, different horizontal ( $x-z$ ) and spanwise ( $x-y$ ) planes are shown to describe various patterns of spatial intermittency. In addition to these visual documentations, several statistics (e.g., turbulence enhancement index, turbulent fraction) are provided for quantification of turbulence intermittency. Furthermore, a strong emphasis is placed on understanding the relationship between gradient Richardson number and turbulence intermittency. The impact of Reynolds number on the aforementioned characteristics of intermittent turbulence is discussed at the end of this section.

#### 3.1 Stratification effects on mean flow and turbulence statistics profiles

Before investigating the spatio-temporal features of intermittency, it is informative to document the influence of stable stratification on the overall flow structure in the open-channel

by analyzing the mean flow and turbulence statistics profiles. Vertical distributions of mean streamwise velocity, temperature, and turbulent momentum- and heat-fluxes with different  $Ri_\tau$  are shown in Fig. 3 ( $Re_\tau = 180$ ). One can see that the flow accelerates with increasing  $Ri_\tau$  in the channel. The slope of the  $\bar{u}$  profiles remains invariant between different cases in the near-wall region ( $y/h < 0.1$ ), implying that a constant viscous wall shear is enforced by the streamwise pressure gradient (see  $\Delta P^*$  in Eq. 2). In the central-channel region, however, the  $\bar{u}$  profiles change from well-mixed ( $Ri_\tau = 0$ ) to curved ( $Ri_\tau > 0$ ); these profiles qualitatively agree with those observed in the closed-channel simulations (Armenio and Sarkar, 2002; García-Villalba and del Álamo, 2011). In addition, for the case with  $Ri_\tau = 480$ , a parabolic profile of streamwise velocity is observed, indicating that the flow is laminarized; our simulation agrees with the linear stability theory in Gage and Reid (1968).

The acceleration of mean velocity is caused by the reduced vertical mixing due to stable stratification, which can be clearly seen in Fig. 3b. The maximal and overall values of turbulent momentum-flux ( $-\overline{u'v'}$ ) decrease with increasing  $Ri_\tau$ , and the peak  $-\overline{u'v'}$  moves from  $y/h \approx 0.18$  ( $Ri_\tau = 0$ ) to  $y/h \approx 0.25$  ( $Ri_\tau = 240$ ). For the case with  $Ri_\tau = 480$ , the flow becomes laminar and the turbulent momentum-flux decreases to zero at all channel heights as would be expected.

The temperature profiles are also modified by the stratification. With increasing  $Ri_\tau$ , the gradient of mean temperature decreases near the wall, implying that the surface heat-flux is significantly reduced by the stratification. This can be clearly indicated by the Nusselt number in Table 1. The Nusselt number, defined as the heat transfer due to turbulence with respect to its laminar value (pure conduction), can be used to describe how close the flow is to a laminar state:

$$Nu = \frac{h}{\Delta T} \left( \frac{\partial T}{\partial y} \right)_{\text{bot}} = \left( \frac{\partial T^*}{\partial y^*} \right)_{\text{bot}}. \quad (4)$$

One can see that the Nusselt number equals the non-dimensional temperature gradient at the bottom wall. For the neutral stratification case ( $Ri_\tau = 0$ ), the Nusselt number is relatively high ( $Nu = 4.64$ ), whereas for the very stable case ( $Ri_\tau = 240$ ),  $Nu = 1.72$ , implying that the flow is becoming closer to laminar. Eventually, for the case with  $Ri_\tau = 480$ , the flow is fully

laminarized and  $Nu = 1.0$ . This is further confirmed in Fig. 3c by the fact that the mean temperature profile for  $Ri_\tau = 480$  is linear.

Under the influence of the stable stratification, the turbulent heat-flux is significantly suppressed, which can be seen in Fig. 3d. As was noted by Armenio and Sarkar (2002), the gradient of mean temperature is related to the turbulent heat-flux. This can be illustrated by integrating the Reynolds-averaged temperature equation in channel flows:

$$\frac{\partial \bar{T}}{\partial y} = \frac{1}{k} \overline{T'v'} + \left( \frac{\partial \bar{T}}{\partial y} \right)_{\text{bot}}. \quad (5)$$

In the near-wall ( $y/h < 0.1$ ) and top-wall ( $y/h > 0.9$ ) regions, the turbulent heat-fluxes ( $-\overline{T'v'}$ ) change sharply in the vertical ( $y$ ) direction for  $Ri_\tau = 0 - 240$ . By virtue of Eq. (5), sharp changes in temperature profiles near the walls are expected as shown in Fig. 3c. Please note that with increasing stratification, both the gradients in turbulent heat-flux and mean temperature decrease rapidly in a monotonic fashion for any stratification level. In the central-channel region, the  $-\overline{T'v'}$  remains almost unchanged resulting in a nearly constant gradient of mean temperature. Similar to that observed for the turbulent momentum-flux, the turbulent heat-flux decreases to zero for  $Ri_\tau = 480$ .

In summary, the stable stratification significantly reduces the transport and mixing of turbulent flows in the vertical direction as would be expected. Therefore, in the following subsections, the vertical velocity field will be primarily utilized to probe if the simulated flow becomes laminarized or intermittent with high stratification levels.

### 3.2 Temporal characteristics of intermittent turbulence

To analyze the temporal characteristics of intermittent turbulence, several probe points are placed in the channel to monitor the time-variations of the stratified turbulent flows. Time-series of vertical velocity in the channel with different  $Ri_\tau$  are shown in Fig. 4. For the weakly stratified case ( $Ri_\tau = 30$ ), the turbulent flow is continuous and no intermittency can be observed. However, with increasing the stratification level (i.e.,  $Ri_\tau = 120$ ), intermittent turbulence can be clearly seen, especially at the near-wall location (around  $y^+ = 10$ ). Interest-

ingly, the bursting and decaying turbulence follows quasi-periodic cycles; approximately 6–7 bursting events are observed in every 10 non-dimensional time ( $tu_\tau/h \approx 10$ ) at  $y^+ = 10$ . In contrast to the near-wall region, in the upper-channel region (i.e., around  $y^+ = 150$ ) the intermittency can be hardly observed. We would like point out that this height-dependency behavior was earlier observed in a wind-tunnel experiment by Ohya et al. (2008). With further increasing the friction Richardson number to  $Ri_\tau = 240$ , intermittency becomes more pronounced. For example, a large segment of decaying turbulence is found in approximately  $10 < tu_\tau/h < 15$ . In contrast to the  $Ri_\tau = 120$  case, the time interval between the turbulent burst and decay is much less rhythmic and instead more irregular. Eventually, when the stratification level increases to  $Ri_\tau=480$ , the turbulence is fully laminarized and no turbulent fluctuation is found.

Time-series of streamwise velocity and temperature in the channel with  $Ri_\tau = 120$  are shown in Fig. 5. Similar to what was found for the vertical velocity, turbulent bursts of streamwise velocity and temperature can be easily identified in the near-wall region. However, compared to the “symmetric” distributions of bursting vertical velocity (i.e., the vertical velocity is equally fluctuating up and down around zero mean), ramp-like variations are found for the streamwise velocity and temperature time-series; the  $u$  and  $T$  increase sharply just after the bursting events and then gradually decrease to their laminar value. This phenomenon is especially evident in the near-wall region. It is quite exciting to see that the ramp-like time-series of streamwise velocity and temperature, simulated in the current DNS study, remarkably resemble those measured in stratified wind-tunnel flows in Ohya et al. (2008) (please refer to Figs. 12 and 13 in their work).

As were depicted in Figs. 4 and 5, the intermittent characteristics vary at different vertical locations. In order to comprehensively illustrate the temporal variability of intermittent turbulence across the entire channel, time-height plots of square of instantaneous vertical velocity, namely  $v'^2 = (v - \bar{v})^2$ , are shown in Fig. 6. Here,  $\bar{v}$  denotes long-term temporal average of  $v$  (essentially,  $\bar{v} \approx 0$ ).  $v'^2$  can be used to measure the bursting intensity, and high (low)  $v'^2$  represents turbulent (laminar) flow states, respectively. In the vertical direction,  $v'^2$  is generally higher in the central-channel regions than near the walls. At the bottom and

the top walls,  $v'^2$  decreases to zero as a result of the constraint of the boundary conditions ( $v = 0$ ). Alternating distributions of high and low  $v'^2$  can be clearly observed at most of the channel heights (except in close proximity of the walls) which indicates the burst and decay of turbulent flows. Moreover, an interesting temporal feature can be observed that the turbulent bursts are not synchronous along the vertical direction but instead are detected earlier at higher vertical locations. For example, for  $Ri_\tau = 120$  at  $t^* \approx 39$ , the flow becomes turbulent at the channel center ( $y/h \approx 0.5$ ), whereas at the same time, the flow remains laminar in the near-wall region ( $y/h \approx 0.1$ ). There is a time lag ( $\Delta t u_\tau / h \approx 0.5$ ) for the bursting events between the central-channel and the near-wall regions. This time lag is related to the angular orientation of the near-wall turbulent flow structures which are elaborated on in Sect. 3.3.

In order to quantitatively analyze the vertical distribution of turbulent intermittency, the turbulence enhancement index (TEI) is used to detect the turbulent bursting events. The TEI is defined as the ratio of increase of vertical velocity variance ( $v'^2$ ) between two consecutive windows with respect to the variance in the first window (Eq. 6):

$$\text{TEI} = \frac{\overline{v_2'^2} - \overline{v_1'^2}}{\overline{v_1'^2}} \quad (6)$$

where the subscripts 1 and 2 represent the current and next windows, respectively (Nakamura and Mahrt, 2005). The window is the prescribed time span for the calculations of  $v'^2$ . The choice of window size should be small enough to eliminate the influence of wave-like motions of vertical velocity and large enough to capture the turbulent bursts (Nakamura and Mahrt, 2005). A window range of  $t_w^+ = \Delta t u_\tau^2 / \nu = 90$  is used here and the interval between two consecutive windows is set to be  $t_i^+ = 0.4 t_w^+$ . The threshold of TEI is set to be 3, above which the rapid increase of velocity is considered to be a turbulent burst. In order to avoid an insufficiently small (spurious) interval between two consecutive bursting events, the minimal bursting interval is set to be  $\Delta t_{\min}^+ = 0.8 t_w^+$ , below which multiple bursting events are considered to be a single event. In addition, we would like to emphasize that the turbulent bursting events obtained from the TEI approach can be very sensitive to the calculation



settings mentioned above, e.g., the threshold. By utilizing a relatively high TEI threshold, we exclude classical bursting events in neutral channel flows, e.g., the burst-sweep cycles (Johnson, 1998) generated by the coherent vortices in the near-wall region. In other words, we only consider the bursting events under the impact of stable stratification. A detailed discussion on the determination of the TEI threshold can be seen in Appendix C.

Vertical distribution of turbulent bursting events in the channel is shown in Fig. 7. One can see that, no bursting event can be detected for  $Ri_\tau = 30$  or 480, which coincides with the previous analyses. For  $Ri_\tau = 120, 240$ , the most frequent bursting events can be found in the near-wall region, whereas in the central-channel region, the bursting frequency decreases drastically. The peak bursting frequency for  $Ri_\tau = 120$  (32 events) is larger than that for  $Ri_\tau = 240$  (26 events); however, for the case with  $Ri_\tau = 120$ , the bursting frequency decreases more rapidly especially in  $y/h > 0.3$ . Interestingly, it is found that the vertical distribution of turbulent bursting events has a similar trend compared to that of turbulent momentum-flux (see Fig. 3b). We speculate that this trend is attributed to the competition between the shear generation and negative buoyancy (due to stable stratifications). Due to the high turbulent momentum-flux and therefore the stronger turbulent mixing in the near-wall region, the turbulent bursts are much more frequent near the wall than in the upper-channel region where the dominant buoyant force significantly suppresses the turbulent motion.

Using observational data based on the CASES-99 experiment, Nakamura and Mahrt (2005) analyzed naturally occurring intermittent turbulence in the atmosphere. The authors calculated TEI using the velocity time-series collected from the 8 levels of sonic anemometers on a 60 m tall meteorological tower. It was found that the frequency of turbulent bursting events decreased with height; the bursting events happened 5–6 times a night at and under 20 m, and 3–4 times a night above 20 m. It is quite encouraging to find that the DNS-based trend of turbulent bursting events in  $y/h > 0.1$  qualitatively agrees with that observed in atmospheric boundary layer flows by Nakamura and Mahrt (2005).

### 3.3 Spatial characteristics of intermittent turbulence

As was mentioned in Sect. 1, intermittent turbulence varies in both space and time. Although intermittent time-series signals have been widely observed, little is known about the spatial distribution of these intermittent structures in the atmosphere. In recent years, DNS studies of stably stratified channel flows, conducted by Flores and Riley (2011), García-Villalba and del Álamo (2011), Brethouwer et al. (2012) and Ansorge and Mellado (2014), have presented intriguing patterns of spatial intermittency. In light of these findings, in this subsection, we further investigate the spatial characteristics of intermittent turbulence in detail.

Instantaneous contours of  $v'^2$  at a horizontal ( $x$ - $z$ ) plane are shown in Fig. 8 for four simulations of varying  $Ri_\tau$ . The  $x$ - $z$  plane is located at  $y^+ = 45$ , and the definition of the  $x$ - $z$  plane can be seen in Fig. 2. For the case with  $Ri_\tau = 30$ , the entire flow is turbulent at the  $x$ - $z$  plane. With increasing the friction Richardson number to  $Ri_\tau = 120$ , oblique “bands”, with an angle  $\sim 30^\circ$  with respect to the streamwise direction, can be seen at the  $x$ - $z$  plane. These bands alternate between high and low  $v'^2$  (i.e., corresponding to turbulent and laminar flows, respectively), and the space between two turbulent bands is  $\sim 12h$ . These oblique patterns qualitatively coincide with previous studies of stratified channel flow in García-Villalba and del Álamo (2011); Brethouwer et al. (2012). For the case with  $Ri_\tau = 240$ , a coexistence of laminar and turbulent flows is also observed; however, in this case the patterns are not organized, rather randomly distributed. Eventually, with increasing the friction Richardson number to  $Ri_\tau = 480$ , the entire flow at the  $x$ - $z$  plane becomes laminar, which concurs with the time-series results in Fig. 4d.

The aforementioned results show that, for  $Ri_\tau = 120$  and 240, the coexistence of laminar and turbulent flows can be observed at a given time. As was stated in Sect. 1, previous studies have shown complex transient phenomena (Flores and Riley, 2011) in stably stratified channel flows. In order to verify if laminar and turbulent flows can coexist continually, instantaneous contours of  $v'^2$  at different times ( $t^* = 36, 38, 40$ ) are shown in Fig. 9. One can see that, with increasing time, continuous coexistence of laminar–turbulent flows can be

observed, which coincides with those reported in García-Villalba and del Álamo (2011) and Brethouwer et al. (2012). Moreover, persistent pattern of oblique bands of laminar–turbulent flow can be found for the case with  $Ri_\tau = 120$ ; the oblique bands seem to propagate downstream with similar widths and spacings. Once again, no particular temporal pattern can be found for the  $Ri_\tau = 240$  case.

In the vertical direction, the spatially intermittent patterns can vary under different flow conditions. For example, in Couette flow, the spatial patterns can extend from the bottom to the top walls at low Reynolds numbers, whereas at high Reynolds numbers, these patterns can be confined to each wall, and uncorrelated (Brethouwer et al., 2012). Additionally, in stably stratified closed-channel flows, laminarization has been observed near the top wall, whereas near the bottom wall, the flow remained turbulent (Iida et al., 2002). In order to study the vertical distribution of the spatial patterns, instantaneous contours of  $v'^2$  at different horizontal planes are shown in Fig. 10. One can see that the oblique bands can be found at all of the channel heights; however, the intensity of these turbulent bands varies. In the near-wall region, the turbulent band is very weak, whereas at  $y^+ = 45$ , the intensity of  $v'^2$  in the turbulent band becomes much higher and the interface between laminar and turbulent flow can be easily identified. However, in the central-channel region, the turbulent band expands and the laminar–turbulent interface becomes diffused. At a higher channel location, the turbulent intensity in the oblique bands decreases again. In conjunction with the results in Fig. 9, it is indicated that an oblique pattern of laminar–turbulent coexistence is found at  $Re_\tau = 180$  and  $Ri_\tau = 120$  in the open-channel flow, and this pattern can steadily persist through time at all of the channel heights.

Additionally, with increasing the  $x$ - $z$  plane from  $y^+ = 10$  to 135, one can observe that the center of the turbulent band moves downstream  $\sim 7h$  (see the red dashed line for the approximate center of the turbulent bands in Fig. 10). This indicates that the turbulent bands are not upright in the vertical direction. This can be clearly seen in Fig. 11, where the contours of  $v'^2$  at the mid spanwise plane are shown (see Fig. 2 for the definition of the spanwise plane). In Fig. 11a, the black dashed lines denote the approximate boundary of the turbulent bands at different vertical locations and the red dashed lines represent the

width of the turbulent bands observed in the  $x-z$  plane. One can see that, in the vertical direction, the turbulent bands lean downstream, and the inclination angle with respect to the streamwise ( $x$ ) direction is approximately 5 deg ( $Ri_\tau = 120$ ). For the case with  $Ri_\tau = 240$ , similar inclination can also be found. The inclined structure conforms well with our previous observations in the context of the time-height plots of  $v'^2$  in Fig. 6. When these forward leaning turbulent bands move downstream, the turbulent bursts are detected earlier in the higher vertical locations.

The aforementioned results clearly show that a coexistence of laminar and turbulent flows can be found in the stratified open-channel flows, and the spatial characteristic may vary with respect to vertical location. In order to quantify the turbulence coverage with respect to different  $x-z$  planes, turbulent fraction ( $F_T$ ) is used to analyze the spatial distribution of intermittent turbulence.  $F_T$  is defined as the spatial area, over which the flow is considered to be turbulent, normalized by the area of the entire  $x-z$  plane (Duguet et al., 2010). The calculation of  $F_T$  consists of two steps. First, the square of instantaneous vertical velocity ( $v'^2$ ), is filtered using a Gaussian filter at a certain  $x-z$  plane. Then, the filtered  $v'^2$  (i.e.,  $v_f'^2$ ) is thresholded with a given critical value and  $F_T$  can be calculated based on the thresholded field. For the Gaussian filter function  $G(r) = (2\pi\sigma^2)^{-1}e^{-0.5r^2/\sigma^2}$ , the variance is chosen to be  $\sigma^2 = \Delta^2/12$  in order to match the second moments of the Gaussian and box filters (Leonard, 1975; Manneville, 2011; Pope, 2000). The filter width  $\Delta_{x,z}$  is chosen to be 100 normalized wall distance ( $\Delta_{x,z}u_\tau/\nu = 100$ ) and the threshold is set to be 10% value of the averaged  $v'^2$  over the whole plane.

Vertical distribution of  $F_T$  with different  $Ri_\tau$  is shown in Fig. 12. One can see that, for all the  $Ri_\tau$ ,  $F_T$  drop drastically to zero at both of the bottom and the top walls owing to the constraint of the boundary conditions ( $v = 0$ ). For  $Ri_\tau = 30$ , as was mentioned above, there is no intermittency observed and  $F_T = 1.0$ . On the other hand, for  $Ri_\tau = 480$ , the entire flow in the channel is fully laminarized so  $F_T = 0$  at all of the vertical locations. For  $Ri_\tau = 120$ , however,  $F_T$  is observed to vary vertically.  $F_T$  is relatively low ( $\sim 0.63$ ) at  $y/h = 0.06$ , whereas at  $y/h = 0.75$ ,  $F_T$  increases to  $\sim 0.9$ . For  $Ri_\tau = 240$ , a similar trend can be found except that the overall value of  $F_T$  decreases for  $\sim 0.15$ . In conjunction with the aforementioned results

from Fig. 7, one can see that the higher frequency of turbulent bursts is generally associated with a lower turbulent fraction at each vertical location.

An intriguing phenomenon in stratified flows is the internal gravity wave. As reported in Komori et al. (1983), wave-like turbulence motions were measured in the core region of strongly stratified open-channel flows. These wave motions were then corroborated by the LES simulations in Kosović and Curry (2000), Saiki et al. (2000) and Armenio and Sarkar (2002). As shown in Armenio and Sarkar (2002), in the strongly stratified case, the prominent internal waves can even extend to the near-wall region. Based on the DNS results, here we further investigate the behavior of internal waves in intermittent turbulence. Instantaneous contours of temperature at the mid spanwise plane is shown in Fig. 13. In the upper-channel region ( $y/h \approx 0.8$ ), internal waves can be identified for both cases ( $Ri_\tau = 120$  and 240). Compared with the prominent internal waves observed in Armenio and Sarkar (2002), here the wave motions seem to constraint themselves in  $y/h > 0.7$ . In the meantime, intermittent turbulence can be observed in the lower-channel region (please also refer to Figs. 4 and 5). Our DNS results indicate that there is a coexistence of significant wave activity and intermittent turbulence in stably stratified flows, which coincides with the field observations in the atmospheric boundary layer (e.g., Sun et al., 2004). This coexistence implies that the internal gravity wave can be a possible trigger to generate intermittent turbulence; however, this topic is beyond the scope of the current study, which will be investigated in our future work.

### 3.4 Relationship between spatial and temporal intermittency

As reported in Coulter and Doran (2002), the temporal intermittency was found to be spatially correlated in the atmospheric boundary layer. The authors analyzed the time-series of turbulent heat flux measured at different site locations of the CASES-99 field campaign. It was shown that the temporal distributions of intermittent turbulence were strongly correlated between different sites, separated by at least 1 km. For example, the episode of turbulent bursts observed at one site location was found to have similar features with that at another site with a time delay of half an hour (please refer to the discussion in Sect. 4.2

in Coulter and Doran, 2002). These results indicate that the turbulent bursting event may not be a fully localized phenomenon in stably stratified flows. In other words, it is possible that the disturbance of intermittent turbulence can be advected by mean flows. In light of these findings, in this subsection we evaluate whether our DNS results can corroborate the strong correlation between spatial and temporal intermittency as observed in Coulter and Doran (2002).

Profiles of mean velocity ( $\bar{u}$ ) and convection velocity ( $\bar{u}_c$ ) of intermittent turbulence are shown in Fig. 14. The convection velocity is calculated based on the space–time correlation approach reported in Kim and Hussain (1993). Specifically, the convection velocity is determined by  $u_c = \Delta x_{\max} / \Delta t$ , where  $\Delta x_{\max}$  is the streamwise distance for which the space–time correlation of  $v'^2$ , i.e.,  $R(\Delta x, y, \Delta t)$ , is maximum at a given time delay ( $\Delta t$ ). In the current study, the time delay is chosen to be 0.5 non-dimensional time ( $\Delta t u_\tau / h = 0.5$ ). Following Brethouwer et al. (2012), in order to consider only the large scale motion of turbulent/laminar flows, a Gaussian filter is applied to the  $v'^2$  fields before calculating the space–time correlation. Both  $\bar{u}$  and  $\bar{u}_c$  are normalized by the bulk/average velocity ( $u_b$ ) in the channel. One can see that for both  $Ri_\tau = 120$  and 240 cases, the convection velocity is lower than the bulk velocity. Moreover, the profile of  $\bar{u}_c$  seems to be essentially invariant along the vertical direction, which coincides well with that observed in Brethouwer et al. (2012). In Brethouwer et al. (2012), the averaged  $\bar{u}_c$  in the channel was found to be  $\sim 0.8u_b$  for a case with  $Re_\tau = 192$ . In the current study, a slightly lower averaged  $\bar{u}_c$  is observed, i.e., approximately  $0.76u_b$  and  $0.73u_b$  for  $Ri_\tau = 120$  and  $Ri_\tau = 240$ , respectively.

Now, using Figs. 4, 9, and 14, we can analyze the relationship between spatial and temporal intermittency. As mentioned in Fig. 9, the turbulent/laminar bands seem to propagate downstream. When the turbulent and laminar bands pass through the probe points in the channel, the time-series of velocity or temperature should alternate between turbulent and laminar states. In order to test this concept, we analyze the case with  $Ri_\tau = 120$ . In Fig. 9, one can see that the spacing between two turbulent bands is approximately  $0.5L_x$  ( $4\pi h$ ). With a constant convection speed of  $0.76u_b$  ( $\sim 19u_\tau$ ), the interval between two bursting events ( $\Delta t_{\text{burst}}$ ) should be about 0.66 non-dimensional time. As discussed in Fig. 4b, ap-

proximately 6–7 bursting events can be observed in every 10 non-dimensional time. This corresponds to a bursting interval of 0.6–0.7 non-dimensional time, which coincides well with the above analysis ( $\Delta t_{\text{burst}} \approx 0.66$ ). In other words, a strong correlation between the spatial and temporal intermittency is observed in the simulated stratified flows. This finding corroborates the analysis in Coulter and Doran (2002) that intermittent turbulence may not be a fully localized phenomenon, and it can be advected by mean flows.

### 3.5 Relationship between intermittency and stability parameter

In stratified shear flows, the gradient Richardson number ( $Ri_g$ ) has been identified as the key parameter which determines the influence of stratifications. The gradient Richardson number is defined as the ratio between the buoyancy frequency ( $N$ ) and the shear rate ( $S$ ):

$$Ri_g = \frac{N^2}{S^2} = -\frac{g\partial\bar{\rho}/\partial y}{\rho_0(\partial\bar{u}/\partial y)^2} = Ri_\tau \frac{\partial\bar{T}^*/\partial y^*}{(\partial\bar{u}^*/\partial y^*)^2}. \quad (7)$$

Compared with the bulk quantities such as  $Ri_\tau$  and  $h/L$ , the gradient Richardson number is a very useful parameter which reflects the local stability of the stratified flow. Linear stability analysis performed by Miles (1961) and Howard (1961) shows that  $Ri_g \geq 0.25$  is a sufficient condition for laminarization of inviscid stratified shear flows. As mentioned in Sect. 1, the Blackadar's hypothesis (Blackadar, 1979) (see also, Stull, 1988; Mahrt, 1999) associated the intermittent turbulence with the modulation of  $Ri_g$ . In this subsection, we would like to explore if Blackadar's hypothesis, i.e., a strong relationship between  $Ri_g$  evolution and intermittent turbulence, holds for the DNS results.

As a first step, we analyze the mean profiles of  $Ri_g$  in the channel, which are shown in Fig. 15. All the three Reynolds numbers ( $Re_\tau = 180, 395$  and  $550$ ) are considered, and more analyses of Reynolds number sensitivity will be presented in Sect. 3.6. One can see that, for all the stratification levels ( $Ri_\tau$ ), the local stability ( $Ri_g$ ) monotonically increases along the vertical direction as a result of decreasing mean shear.  $Ri_g$  becomes singular at the top wall where the mean shear vanishes. At a given vertical location,  $Ri_g$  generally increases with increasing overall stratification level ( $Ri_\tau$ ). In addition, one notices that the



slope of the  $Ri_g$  profiles increases sharply at  $Ri_g \approx 0.2$  for all the  $Re_\tau$  cases. The mean profiles of  $Ri_g$ , as well as the sharp increase in  $Ri_g$  slope, qualitatively coincides with those observed in the stratified closed-channel flows in Armenio and Sarkar (2002) and García-Villalba and del Álamo (2011).

Next, we discuss the overall impact of  $Ri_g$  on turbulence statistics. Distribution of  $Ri_g$  with respect to correlation coefficient of momentum and heat fluxes is shown in Fig. 16. One can see that in the low  $Ri_g$  region, the correlation coefficients are relatively invariant. However, in  $0.15 < Ri_g < 0.2$ , there is a sharp drop of correlation coefficients of both  $\overline{u'v'}$  and  $\overline{T'v'}$ . The agreement of this sharp drop trend is relatively good between different  $Re_\tau$  cases, especially for  $\overline{u'v'}$ . These results corroborate the linear stability analysis by Miles (1961) and Howard (1961), as well as the LES results reported in Armenio and Sarkar (2002), implying that the vertical motion of turbulence activity is significantly suppressed in the region with  $Ri_g > 0.25$ .

In addition to the impact of  $Ri_g$  on the overall stability of stratified flows, in this study, we also explore the relation between  $Ri_g$  and local turbulence. This is done by correlating the instantaneous gradient Richardson number (henceforth  $Ri_{gi}$ ) and  $v'^2$ . The definition of  $Ri_{gi}$  is similar to that in Eq. (7), except that the instantaneous gradients of temperature and velocity are utilized:

$$Ri_{gi} = Ri_\tau \frac{\partial T^* / \partial y^*}{(\partial u^* / \partial y^*)^2}. \quad (8)$$

The concept of instantaneous gradient Richardson number is similar to the point-wise gradient Richardson number proposed in Mason (1994). Instantaneous contours of  $Ri_{gi}$  and  $v'^2$  at the  $x$ - $z$  plane with  $y^+ = 90$  is shown in Fig. 17. One can observe that the  $Ri_{gi}$  pattern (Fig. 17a) remarkably resembles the laminar/turbulent pattern in Fig. 17b. Similar to that observed in Sect. 3.3, the  $Ri_{gi}$  pattern is also found to convect downstream, closely connected to the laminar/turbulent pattern (not shown). By using the approach introduced in Sect. 3.3, we separate the turbulent and the laminar regions in the  $x$ - $z$  plane. The plane-averaged  $Ri_{gi}$  in the laminar region and the turbulent region are 0.34 and 0.19, respectively. The strong spatial-correlation between the low/high  $Ri_{gi}$  and the turbulent/laminar regions,

observed at the central-channel, well corroborates the Blackadar's hypothesis. In addition, the plane-averaged  $Ri_{gi}$  in the laminar region coincides with the linear stability analysis that  $Ri_g > 0.25$  is sufficient for laminarization.

Similarly, we also plot the profiles of plane-averaged  $Ri_{gi}$  for the turbulent ( $\overline{Ri_{gi}^T}$ ) and the laminar ( $\overline{Ri_{gi}^L}$ ) regions (see Fig. 18). As expected,  $\overline{Ri_{gi}^L}$  is generally higher than  $\overline{Ri_{gi}^T}$ . In the bottom and the top wall regions, the magnitudes of  $\overline{Ri_{gi}^T}$  and  $\overline{Ri_{gi}^L}$  are nearly identical. While in the central-channel region,  $\overline{Ri_{gi}}$  becomes quite distinguishable between the laminar and the turbulent regions, especially for the case with  $Ri_\tau = 120$ . The profiles of  $\overline{Ri_{gi}^T}$  and  $\overline{Ri_{gi}^L}$  qualitatively resemble the profiles of  $Ri_g$ , calculated at the locations inside and outside of the oblique turbulent-bands, in Brethouwer et al. (2012).

In addition to investigate the spatial-correlation between  $Ri_{gi}$  and intermittent turbulence, we also explore the temporal evolution of  $Ri_{gi}$  associated with turbulent bursts. In the wind-tunnel experiments performed by Ohya et al. (2008), it was observed that the local  $Ri_g$  was closely correlated to turbulent bursting events; for  $Ri_g < 0.25$ , the velocity time-series exhibited turbulent behavior; whereas for  $Ri_g > 0.25$ , the velocity time-series became quiescent. Here we would like to see whether our DNS results can corroborate the above dynamical characteristic as reported in Ohya et al. (2008). Similar to Ohya et al. (2008), a moving-average filter is applied on the simulated time-series of  $Ri_{gi}$  (hereinafter called  $\widetilde{Ri_{gi}}$ ) with a filter width of  $\Delta t u_\tau / h = 0.2$ . Time-series of  $v'^2$  and  $\widetilde{Ri_{gi}}$  at the central-channel are shown in Fig. 19 ( $Re_\tau = 180$ ,  $Ri_\tau = 120$ ). One can see that, during the period with quiescent portions of  $v'^2$  (i.e., laminar state of flow, see Fig. 19b for reference),  $\widetilde{Ri_{gi}}$  is generally larger than the critical value (0.25). While in the turbulent portions of  $v'^2$ ,  $\widetilde{Ri_{gi}}$  drops sharply ( $< 0.25$ ). The temporal correlation between  $\widetilde{Ri_{gi}}$  and intermittent turbulence qualitatively coincides with those reported in Ohya et al. (2008) (see Fig. 16 in their work). Furthermore, it is suggested that  $Ri_{gi}$  can be a good localized parameter to predict spatial and temporal evolution of intermittent turbulence in stably stratified flows. It is important to note that, in this study, the prominent dynamical correlation between  $\widetilde{Ri_{gi}}$  and turbulent burst is most distinguishable in the central-channel region ( $0.4 < y/h < 0.6$ ). However, in the near-wall region, the

above dynamical relation becomes less evident (not shown). We speculate that this incoherent correlation is due to the significant impact of viscosity in the near-wall region, as discussed in Turner (1979) and Defina et al. (1999). The detailed impact of viscosity on the correlation between local stability and intermittent turbulence will be studied in the future.

### 3.6 Sensitivity of intermittency with respect to Reynolds numbers

The above analyses mainly focused on a relatively low Reynolds number case ( $Re_\tau = 180$ ). In this subsection, we discuss whether the spatial and temporal characteristics of intermittent turbulence, observed in Sects. 3.2 to 3.5, hold for higher Reynolds numbers. To do this, we perform two additional simulations with  $Re_\tau = 395$  ( $Ri_\tau = 960$ ) and  $Re_\tau = 550$  ( $Ri_\tau = 2880$ ). Time-series of vertical and streamwise velocity for these higher Reynolds number cases are shown in Figs. 20 and 21, respectively. One can see that the temporal evolutions of both vertical and streamwise velocities qualitatively resemble those shown in Figs. 4 and 5. Intermittent turbulence is much more distinguishable in the near-wall region ( $y^+ = 10$ ) than in the central-channel ( $y^+ = 150$ ). Moreover, the ramp-like variations of streamwise velocity can be clearly observed for both  $Re_\tau = 395$  and  $550$ , especially near the wall. Similar ramp-like variation is also found in the temperature time-series (not shown). Next, we analyze the vertical distribution of turbulent bursting events for the higher Reynolds number cases (please refer to Fig. 22). Similar to what was observed for  $Re_\tau = 180$  (see Fig. 7), the turbulent bursting events near the bottom wall are more frequent than that in the upper-channel region. Moreover, compared with  $Re_\tau = 180$ , the bursting events decrease much more sharply along the vertical direction. Lastly, we evaluate whether the close connection between  $\widetilde{Ri}_{gi}$  and intermittent turbulence can be observed for the higher Reynolds number cases. Time-series of  $\widetilde{Ri}_{gi}$  and  $v'^2$  for  $Re_\tau = 395$  is shown in Fig. 23. Again, the dynamical correlation between the temporal variation of  $\widetilde{Ri}_{gi}$  and intermittent turbulence is clearly observed, coinciding with what was observed in Fig. 19 for  $Re_\tau = 180$ . A similar correlation can also be observed for the case with  $Re_\tau = 550$  (not shown). Above all, the spatial and temporal characteristics of intermittent turbulence, observed for the higher Reynolds numbers, are qualitatively similar to those shown in  $Re_\tau = 180$ , although there

are some differences in detail (e.g., the sharper drop of turbulent bursting events in vertical direction).

## 4 Conclusions

In this paper, direct numerical simulation is utilized to simulate open-channel flows under stably stratified conditions. The spatio-temporal characteristics of intermittent turbulence are discussed, and several conclusions are made as summarized below.

Under stably stratified conditions, the vertical transport of turbulent momentum- and heat-fluxes is suppressed and the mean flow and turbulence statistics profiles are significantly modified. For the weakly stratified case with  $Ri_\tau = 30$  ( $Re_\tau = 180$ ), the turbulence is continuous and no intermittency is found. With increasing the stratification level to  $Ri_\tau = 120$  and 240, intermittent turbulence is clearly observed from the time-series of velocity and temperature, especially in the near-wall regions. Eventually, the entire flow is laminarized in the channel for  $Ri_\tau = 480$ . This result is in agreement with linear stability analysis by Gage and Reid (1968). Turbulence enhancement index is utilized to detect turbulent bursting events. It is found that the most frequent bursting event occurs in the near-wall region; in the upper-channel region where the buoyant force is dominant, the bursting event frequency decreases significantly. The vertical variation of bursting events qualitatively agrees with those observed in laboratory and field experiments (Ohya et al., 2008; Nakamura and Mahrt, 2005).

Stable coexistence of laminar and turbulent flows is found at various horizontal planes. For the case with  $Ri_\tau = 120$  ( $Re_\tau = 180$ ), alternating laminar and turbulent bands are observed at an angle  $\sim 30^\circ$  to the streamwise direction. This oblique pattern persists through time and the bands propagate downstream with similar widths and spacings. With increasing  $Ri_\tau$  to 240, however, the coexistent pattern of laminar and turbulent flows becomes less organized. Turbulent fraction is utilized to analyze the vertical variation of intermittent turbulence. It is found that, for  $Ri_\tau = 120$  and 240, the turbulent fraction is relatively low in the near-wall region, whereas it increases rapidly in the upper-channel region.

Strong correlation between the spatial and temporal intermittency is observed in the channel. The turbulent/laminar bands are found to propagate downstream with an uniform convection velocity, and the time-series signal alternates between turbulent and laminar states when the corresponding turbulent/laminar bands pass through the probe points. This prominent correlation, observed in the DNS results, corroborates the observation-based analyses in Coulter and Doran (2002) that intermittent turbulence may not be a fully localized phenomenon, and it can be advected by mean flows in the atmosphere.

The instantaneous gradient Richardson number ( $Ri_{gi}$ ), a local stability parameter reflecting the balance between wind shear and buoyancy, is found to be a quite relevant quantity to predict the spatial and temporal characteristics of intermittent turbulence. It is found that the alternating low/high  $Ri_{gi}$  pattern remarkably correlates with the turbulent/laminar bands at the horizontal plane in central-channel region. Furthermore, the temporal evolution of the filtered  $Ri_{gi}$  is strongly connected to the bursting and quiescent state of  $v'^2$  time-series. Indirectly, our DNS results corroborate an age-old hypothesis by Blackadar that the intermittent turbulence is strongly correlated with the modulation of  $Ri_g$  in the atmosphere. Additionally, the Reynolds number sensitivity study, performed at the end of the paper, suggests that the spatial and temporal characteristics of intermittent turbulence, observed for the cases with  $Re_\tau = 180$ , qualitatively holds for higher Reynolds number ( $Re_\tau = 395$  and  $550$ ).

It is evident that some of the findings of the present work have striking similarities with results gleaned from ABL flows. However, given the Reynolds number disparity, these similarities should be considered with caution. In the near-future, we will explore the strengths and weaknesses of a suite of LES-SGS models in capturing low Reynolds number intermittency by using our DNS-based results as benchmark. Several contemporary LES-SGS models assume local balance of turbulent kinetic energy (TKE) production with its dissipation. We speculate that these models might not fare well in this exercise. On the other hand, we expect the SGS models with dynamic TKE formulations and energy backscatter options (e.g., Ghosal et al., 1995; Davidson, 1997; Kim and Menon, 1999) to be highly competitive. We envisage that a subset of these SGS models might be (not guaranteed) successful in mimicking the intermittent ABL flows.

Our future work will also involve characterization of intermittent turbulence from a complex systems perspective. Over the years, a number of simple dynamical systems have been reported to exhibit intermittency (Heagy et al., 1994; Marthaler et al., 2001; Toniolo et al., 2002). Several mechanisms were proposed, such as on-off intermittency, Pomeau–Manneville mechanism, etc. (Pomeau and Manneville, 1980; Platt et al., 1993), to explain such intrinsic dynamical behaviors. It was noticed that bursting activity can only be triggered within certain regions of a parameter space (Toniolo et al., 2002). More interestingly, the duration of quiescent period was found to follow certain power laws (Toniolo et al., 2002). We are interested to find out if analogous results can be discovered for intermittency in stably stratified flows.

## Appendix A: Solver verification

In this Appendix, we first compare the simulation results produced by the current DNS solver (OF) against the DNS results from Nagaosa and Saito (1997) (referred to as NS97 henceforth). A digitizer is used to extract the simulated data from the plots reported by Nagaosa and Saito (1997). Comparisons of mean and root-mean-square (rms) velocity, and turbulent momentum-flux for neutrally and stably stratified cases are presented in Fig. A1. One can see that the results from the current solver (OF) agree well with those from NS97 for all cases. The maximal discrepancy is found for  $u_{\text{rms}}$  at  $y/h \approx 0.3$ , and the averaged and maximum differences are  $\sim 1.5$  and  $\sim 2.2\%$ , respectively.

Next, we also compare our results with those obtained by a spectral method in order to ascertain that the grid resolution utilized in the present DNS study is sufficient. For this purpose, we use the well-cited DNS results (neutrally stratified case) from Moser et al. (1999) (referred to as MKM99 henceforth) as benchmarks. Comparisons of mean and rms velocity, turbulent momentum-flux, and production of turbulence kinetic energy for the neutral case are presented in Fig. A2. One can see that the results produced by the current solver (OF) agree well with those from MKM99 for both  $Re_\tau = 180$  and 395. We do point out that the

mean velocity ( $\bar{u}$ , see Fig. A2a) is overestimated in the central-channel region ( $y/h \approx 1$ ) with the averaged and maximum differences of  $\sim 2.2$  and  $\sim 2.5\%$ , respectively.

Although there are some differences between the results from the current DNS solver and those from NS97 and MKM99, this level of discrepancy is not unexpected from different DNS solvers (for example, see the code verification in Vreman and Kuerten, 2014; Kasagi et al., 1992, for reference). In a nutshell, the current solver accurately simulates the mean and turbulent components of the flows for neutral and stratified cases. There is no indication that the current grid resolution is insufficient to fully resolve the turbulence phenomena in various stably stratified flows. Without any doubt, these solver verification results build confidence for the simulations and analyses reported in the rest of the paper.

## Appendix B: Influence of Simulation Configurations

In this appendix, we evaluate the influence of simulation configurations, e.g., grid resolution, domain size, on the spatio-temporal characteristics of intermittency. Two additional simulations are conducted for the  $Re_\tau = 180$ ,  $Ri_\tau = 120$  case. For one simulation, the horizontal grid resolution is increased to  $\Delta x^+ = 5.9$  and  $\Delta z^+ = 2.9$  while the domain size is kept to  $L_x/h = 8\pi$  and  $L_z/h = 4\pi$ . For the other simulation, the horizontal grid resolution is fixed to  $\Delta x^+ = 8.8$  and  $\Delta z^+ = 4.4$ , but the domain size is enlarged to  $L_x/h = 12\pi$  and  $L_z/h = 6\pi$ . Other simulation configurations are identical to the S120 case in Table 1. The simulations are run for 10 non-dimensional time. Fig. A3 shows the time-series of vertical velocity and contours of  $v'^2$  at a  $x$ - $z$  plane for these two simulations. Qualitatively, the spatio-temporal characteristics of intermittency, i.e., the oblique turbulence band and the height-dependency of temporal intermittency, are similar to what was observed in Figs. 4 and 8. The control grid resolution and domain size in Table 1 are thus expected to be sufficient to resolve and accommodate the spatio-temporal evolution of intermittent turbulence.

## Appendix C: Determination of TEI threshold

As mentioned in Sect. 3.2, we chose a relatively high TEI threshold to exclude classical bursting events in neutral or near-neutral flows, e.g., burst-sweep cycles (Johnson, 1998). In this Appendix, determination of the TEI threshold is discussed. Time-series of  $v'^2$  and TEI at  $y^+ = 10$  is shown in Fig. A4. For  $Ri_\tau = 30$ , sharp spikes are observed in the  $v'^2$  time-series (see Fig. A4a), which can be caused by the burst-sweep cycles in the near-wall region. However, the ratio between the magnitudes of bursting and quiescent  $v'^2$  is much less significant compared with that observed in the very stable case (see Fig. A4b). As a result, the TEI value for  $Ri_\tau = 30$  is much less than that for  $Ri_\tau = 120$  (see Fig. A4b and d). In this study, we only consider the bursting events under the impacts of stable stratification, the TEI value is set to be 3.0 (see the red dash line in Fig. A4b and d) to exclude the classical bursting events in neutral or near-neutral flows.

*Acknowledgements.* The authors acknowledge financial support received from the Department of Defense (AFOSR grant under award number FA9550-12-1-0449) and the National Science Foundation (grant AGS-1122315). Any opinions, findings and conclusions or recommendations expressed in this material are those of the authors and do not necessarily reflect the views of the Department of Defense or the National Science Foundation. The authors also acknowledge computational resources obtained from the Extreme Science and Engineering Discovery Environment (XSEDE), which is supported by National Science Foundation (grant number ACI-1053575). In addition, the authors would like to thank Christopher G. Nunalee, Kiliyanpilakkil V. Praju, and the anonymous reviewers for their valuable comments and suggestions to improve the quality of the paper.



## References

- Ansorge, C. and Mellado, J. P.: Global intermittency and collapsing turbulence in the stratified planetary boundary layer, *Bound.-Lay. Meteorol.*, 153, 89–116, 2014.
- Armenio, V. and Sarkar, S.: An investigation of stably stratified turbulent channel flow using large-eddy simulation, *J. Fluid Mech.*, 459, 1–42, 2002.
- Barnard, J. C.: Intermittent turbulence in the very stable Ekman layer, PhD thesis, University of Washington, Washington, 2000.
- Basu, S. and Porté-Agel, F.: Large-eddy simulation of stably stratified atmospheric boundary layer turbulence: a scale-dependent dynamic modeling approach, *J. Atmos. Sci.*, 63, 2074–2091, 2006.
- Bernardini, M. and Pirozzoli, S. and Orlandi, P.: Velocity statistics in turbulent channel flow up to  $Re_\tau = 4000$ , *J. Fluid Mech.*, 742, 171–191, 2014.
- Blackadar, A.: High-resolution models of the planetary boundary layer, *Adv. Environ. Sci. Eng.*, 1, 50–85, 1979.
- Brethouwer, G., Duguet, Y., and Schlatter, P.: Turbulent–laminar coexistence in wall flows with Coriolis, buoyancy or Lorentz forces, *J. Fluid Mech.*, 704, 137–172, 2012.
- Businger, J. A.: Turbulent transfer in the atmospheric surface layer, in: *Workshop on Micrometeorology*, American Meteorological Society, Boston, MA, USA, 67–100, 1973.
- Coulter, R. L. and Doran, J. C.: Spatial and temporal occurrences of intermittent turbulence during CASES-99, *Bound.-Lay. Meteorol.*, 105, 329–349, 2002.
- Cullen, N. J., Steffen, K., and Blanken, P. D.: Nonstationarity of turbulent heat fluxes at Summit, Greenland, *Bound.-Lay. Meteorol.*, 122, 439–455, 2007.
- Davidson, L.: LES of recirculating flow without any homogeneous direction: a dynamic one-equation subgrid model, in: *2nd International Symposium on Turbulence Heat and Mass Transfer*, Delft University Press, Delft, 481–490, 1997.
- Defina, A., Lanzoni, S., and Susin, F. M.: Stability of a stratified viscous shear flow in a tilted tube, *Phys. Fluids*, 11, 344–355, 1999.
- Deusebio, E., Schlatter, P., Brethouwer, G., and Lindborg, E.: Direct numerical simulations of stratified open channel flows, *J. Phys. Conf. Ser.*, 318, 022009, doi:10.1088/1742-6596/318/2/022009, 2011.
- Dong, Y.-H. and Lu, X.-Y.: Direct numerical simulation of stably and unstably stratified turbulent open channel flows, *Acta Mech.*, 177, 115–136, 2005.

- Duguet, Y., Schlatter, P., and Henningson, D. S.: Formation of turbulent patterns near the onset of transition in plane Couette flow, *J. Fluid Mech.*, 650, 119–129, 2010.
- Flores, F., Garreaud, R., and Muñoz, R.: CFD simulations of turbulent buoyant atmospheric flows over complex geometry: solver development in OpenFOAM, *Comput. Fluids*, 82, 1–13, 2013.
- Flores, O. and Riley, J. J.: Analysis of turbulence collapse in the stably stratified surface layer using direct numerical simulation, *Bound.-Layer. Meteorol.*, 139, 241–259, 2011.
- Frisch, U.: *Turbulence: the legacy of AN Kolmogorov*, Cambridge University Press, 1995.
- Gage, K. S. and Reid, W. H.: The stability of thermally stratified plane Poiseuille flow, *J. Fluid Mech.*, 33, 21–32, 1968.
- García-Villalba, M. and del Álamo, J. C.: Turbulence modification by stable stratification in channel flow, *Phys. Fluids*, 23, 045104, doi:10.1063/1.3560359, 2011.
- Garg, R. P., Ferziger, J. H., Monismith, S. G., and Koseff, J. R.: Stably stratified turbulent channel flows, I. Stratification regimes and turbulence suppression mechanism, *Phys. Fluids*, 12, 2569–2594, 2000.
- Ghosal, S., Lund, T. S., Moin, P., and Akselvoll, K.: A dynamic localization model for large-eddy simulation of turbulent flows, *J. Fluid Mech.*, 286, 229–255, 1995.
- Heagy, J. F., Platt, N., and Hammel, S. M.: Characterization of on-off intermittency, *Phys. Rev. E*, 49, 1140–1150, 1994.
- Hoang, D. A., van Steijn, V., Portela, L. M., Kreutzer, M. T., and Kleijn, C. R.: Benchmark numerical simulations of segmented two-phase flows in microchannels using the Volume of Fluid method, *Comput. Fluids*, 86, 28–36, 2013.
- Holtslag, A. A. M., Svensson, G., Baas, P., Basu, S., Beare, B., Beljaars, A. C. M., Bosveld, F. C., Cuxart, J., Lindvall, J., Steeneveld, G. J., Tjernström, M., and Van De Wiel, B. J. H.: Stable atmospheric boundary layers and diurnal cycles: challenges for weather and climate models, *B. Am. Meteorol. Soc.*, 94, 1691–1706, 2013.
- Howard, L. N.: Note on a paper of John W. Miles, *J. Fluid Mech.*, 10, 509–512, 1961.
- Iida, O., Kasagi, N., and Nagano, Y.: Direct numerical simulation of turbulent channel flow under stable density stratification, *Int. J. Heat Mass Tran.*, 45, 1693–1703, 2002.
- Issa, R. I.: Solution of the implicitly discretised fluid flow equations by operator-splitting, *J. Comput. Phys.*, 62, 40–65, 1986.
- Johnson, R. W.: *The Handbook of Fluid Dynamics*, CRC Press, Boca Raton, FL, USA, 1998.
- Kasagi, N., Tomita, Y., and Kuroda, A.: Direct numerical simulation of passive scalar field in a turbulent channel flow, *J. Heat Transf.*, 114, 598–606, 1992.

- Kawamura, H., Abe, H., and Matsuo, Y.: DNS of turbulent heat transfer in channel flow with respect to Reynolds and Prandtl number effects, *Int. J. Heat Fluid Fl.*, 20, 196–207, 1999.
- Kim, J. and Hussain, F.: Propagation velocity of perturbations in turbulent channel flow, *Phys. Fluids*, 5, 695–706, 1993.
- Kim, J., Moin, P., and Moser, R.: Turbulence statistics in fully developed channel flow at low Reynolds number, *J. Fluid Mech.*, 177, 133–166, 1987.
- Kim, W.-W. and Menon, S.: An unsteady incompressible Navier–Stokes solver for large eddy simulation of turbulent flows, *Int. J. Numer. Meth. Fl.*, 31, 983–1017, 1999.
- Komori, S., Ueda, H., Ogino, F., and Mizushima, T.: Turbulence structure in stably stratified open-channel flow, *J. Fluid Mech.*, 130, 13–26, 1983.
- Kosović, B. and Curry, J. A.: A large eddy simulation study of a quasi–steady, stably stratified atmospheric boundary layer, *J. Atmos. Sci.*, 57, 1052–1068, 2000.
- Lawrence, J. S., Ashley, M. C. B., Tokovinin, A., and Travouillon, T.: Exceptional astronomical seeing conditions above Dome C in Antarctica, *Nature*, 431, 278–281, 2004.
- Leonard, A.: Energy cascade in large-eddy simulations of turbulent fluid flows, *Adv. Geophys.*, 18, 237–248, 1975.
- Mahrt, L.: Intermittency of atmospheric turbulence, *J. Atmos. Sci.*, 46, 79–95, 1989.
- Mahrt, L.: Stratified atmospheric boundary layers, *Bound.-Lay. Meteorol.*, 90, 375–396, 1999.
- Manneville, P.: On the decay of turbulence in plane Couette flow, *Fluid Dyn. Res.*, 43, 065501, doi:10.1088/0169-5983/43/6/065501, 2011.
- Marthaler, D., Armbruster, D., Lai, Y.-C., and Kostelich, E. J.: Perturbed on-off intermittency, *Phys. Rev. E*, 64, 016220, doi:10.1103/PhysRevE.64.016220, 2001.
- Mason, P. J.: Large-eddy simulation: a critical review of the technique, *Q. J. Roy. Meteorol. Soc.*, 120, 1–26, 1994.
- Miles, J. W.: On the stability of heterogeneous shear flows, *J. Fluid Mech.*, 10, 496–508, 1961.
- Moin, P. and Mahesh, K.: Direct numerical simulation: a tool in turbulence research, *Annu. Rev. Fluid Mech.*, 30, 539–578, 1998.
- Moser, R. D., Kim, J., and Mansour, N. N.: Direct numerical simulation of turbulent channel flow up to  $Re_\tau = 590$ , *Phys. Fluids*, 11, 943–945, 1999.
- Nagaosa, R. and Saito, T.: Turbulence structure and scalar transfer in stratified free–surface flows, *AIChE J.*, 43, 2393–2404, 1997.
- Nakamura, R. and Mahrt, L.: A study of intermittent turbulence with CASES-99 tower measurements, *Bound.-Lay. Meteorol.*, 114, 367–387, 2005.

- Nieuwstadt, F. T. M.: Direct numerical simulation of stable channel flow at large stability, *Bound.-Lay. Meteorol.*, 116, 277–299, 2005.
- Ohya, Y., Nakamura, R., and Uchida, T.: Intermittent bursting of turbulence in a stable boundary layer with low-level jet, *Bound.-Lay. Meteorol.*, 126, 349–363, 2008.
- OpenFOAM: The open source CFD toolbox, programmer's guide, version 2.4.0, 2015.
- Park, J., Basu, S., and Manuel, L.: Large-eddy simulation of stable boundary layer turbulence and estimation of associated wind turbine loads, *Wind Energy*, 17, 359–384, 2013.
- Platt, N., Spiegel, E. A., and Tresser, C.: On-off intermittency: a mechanism for bursting, *Phys. Rev. Lett.*, 70, 279–282, 1993.
- Pomeau, Y. and Manneville, P.: Intermittent transition to turbulence in dissipative dynamical systems, *Commun. Math. Phys.*, 74, 189–197, 1980.
- Pope, S. B.: *Turbulent Flows*, Cambridge University Press, 2000.
- Saiki, E. M., Moeng, C.-H., and Sullivan, P. P.: Large-eddy simulation of the stably stratified planetary boundary layer, *Bound.-Lay. Meteorol.*, 95, 1–30, 2000.
- Salmond, J. A. and McKendry, I. G.: A review of turbulence in the very stable nocturnal boundary layer and its implications for air quality, *Prog. Phys. Geogr.*, 29, 171–188, 2005.
- Spalart, P. R.: Direct simulation of a turbulent boundary layer up to  $R_\theta = 1410$ , *J. Fluid Mech.*, 187, 61–98, 1988.
- Stull, R. B.: *An Introduction to Boundary Layer Meteorology*, Kluwer Academic Publishers, Dordrecht, the Netherlands, 1988.
- Sun, J., Burns, S. P., Lenschow, D. H., Banta, R., Newsom, R., Coulter, R., Frasier, S., Ince, T., Nappo, C., Cuxart, J., Blumen, W., Lee, X., and Hu, X.-Z.: Intermittent turbulence associated with a density current passage in the stable boundary layer, *Bound.-Lay. Meteorol.*, 105, 199–219, 2002.
- Sun, J., Lenschow, D. H., Burns, S. P., Banta, R. M., Newsom, R. K., Coulter, R., Frasier, S., Ince, T., Nappo, C., Balsley, B. B., Jensen, M., Mahrt, L., Miller, D., and Skelly, B.: Atmospheric disturbances that generate intermittent turbulence in nocturnal boundary layers, *Bound.-Lay. Meteorol.*, 110, 255–279, 2004.
- Toniolo, C., Provenzale, A., and Spiegel, E. A.: Signature of on-off intermittency in measured signals, *Phys. Rev. E*, 66, 066209, doi:10.1103/PhysRevE.66.066209, 2002.
- Townsend, A. A.: Local isotropy in the turbulent wake of a cylinder, *Aust. J. Chem.*, 1, 161–174, 1948.

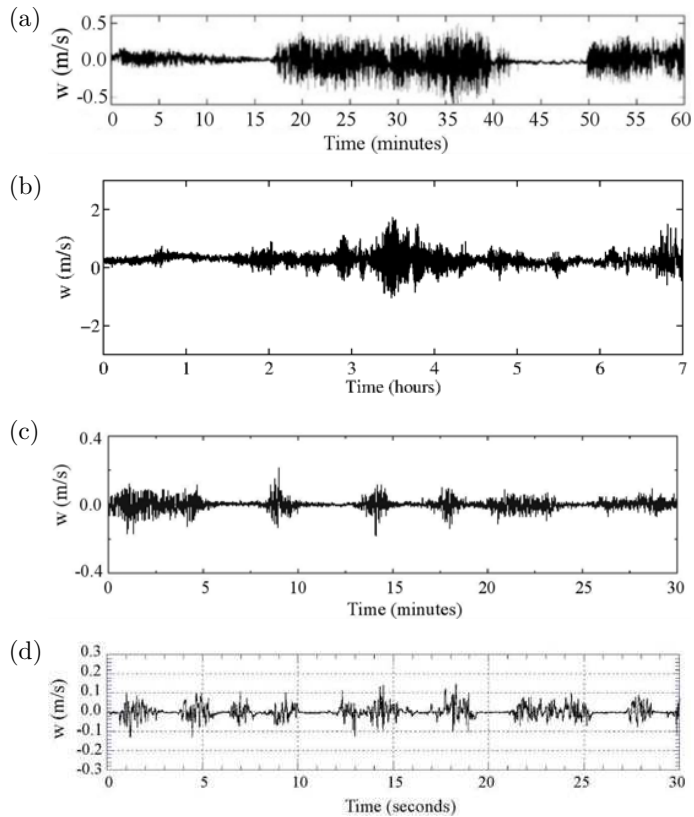
- Tsinober, A.: An Informal Introduction to Turbulence, vol. 63, Springer, Dordrecht, the Netherlands, 2001.
- Turner, J. S.: Buoyancy Effects in Fluids, Cambridge University Press, 1979.
- Vreman, A. W. and Kuerten, J. G. M.: Comparison of direct numerical simulation databases of turbulent channel flow at  $Re_\tau = 180$ , Phys. Fluids, 26, 015102, doi:10.1063/1.4861064, 2014.
- Zonta, F., Onorato, M., and Soldati, A.: Turbulence and internal waves in stably-stratified channel flow with temperature-dependent fluid properties, J. Fluid Mech., 697, 175–203, 2012.

**Table 1.** Summary of the simulation configurations used in this study.  $Re_\tau$  is friction Reynolds number;  $Ri_\tau$  is friction Richardson number;  $Nu$  is Nusselt number;  $L_x$  and  $L_z$  are the domain lengths in the streamwise ( $x$ ) and spanwise ( $z$ ) directions, respectively;  $h$  is the open-channel height in the vertical ( $y$ ) direction ( $h$  is set to be 1.0 for the current study);  $N_x, N_y, N_z$  are the cell numbers in  $x, y, z$  directions, respectively; and  $\Delta x^+, \Delta y^+, \Delta z^+$  are the normalized grid resolutions (e.g.,  $\Delta x^+ = \Delta x u_\tau / \nu$ ). The smaller and larger  $\Delta y^+$  represent the vertical grid resolution at the bottom and the top walls, respectively.

Case	$Re_\tau$	$Ri_\tau$	$Nu$	$L_x/h$	$L_z/h$	$N_x$	$N_y$	$N_z$	$\Delta x^+$	$\Delta y^+$	$\Delta z^+$
S0	180	0	4.64	$8\pi$	$4\pi$	512	50	512	8.8	0.1–5.5	4.4
S30	180	30	3.01	$8\pi$	$4\pi$	512	50	512	8.8	0.1–5.5	4.4
S120	180	120	2.07	$8\pi$	$4\pi$	512	50	512	8.8	0.1–5.5	4.4
S240	180	240	1.72	$8\pi$	$4\pi$	512	50	512	8.8	0.1–5.5	4.4
S480	180	480	1.00	$8\pi$	$4\pi$	512	50	512	8.8	0.1–5.5	4.4
S960	395	960	2.08	$8\pi$	$4\pi$	1088	92	1088	9.1	0.1–5.6	4.6
S2880	550	2880	1.76	$8\pi$	$4\pi$	1152	100	1152	12.0	0.1–6.5	6.0
V1	180	0	...	$4\pi$	$2\pi$	256	100	256	8.8	0.1–5.5	4.4
V2	395	0	...	$2\pi$	$\pi$	288	184	288	8.6	0.1–5.6	4.3
V3	150	0	...	$2\pi$	$\pi$	108	45	108	8.7	0.1–5.5	4.4
V4	150	10	...	$2\pi$	$\pi$	108	45	108	8.7	0.1–5.5	4.4
V5	150	20	...	$2\pi$	$\pi$	108	45	108	8.7	0.1–5.5	4.4

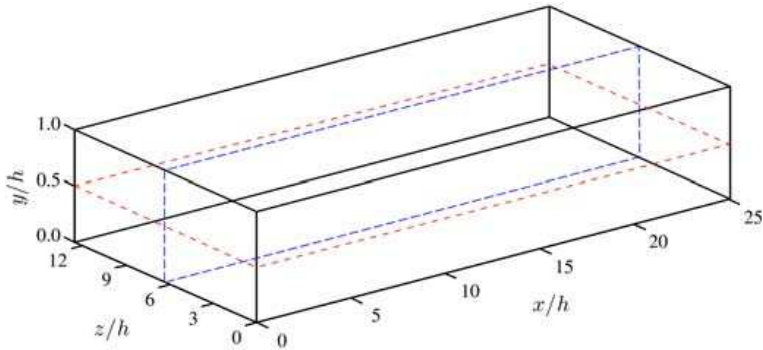
**Table 2.** Summary of different grid resolutions used for DNS studies of neutral and stratified channel flows.  $Re_\tau$  is friction Reynolds number;  $Re_g$  is Reynolds number based on geostrophic wind;  $Ri_\tau$  is friction Richardson number;  $Ri_b$  is bulk Richardson number;  $h/L$  is stability parameter;  $x, y, z$  are streamwise, vertical, and spanwise directions, respectively;  $\Delta x^+, \Delta y^+, \Delta z^+$  are the normalized grid resolution (e.g.,  $\Delta x^+ = \Delta x u_\tau / \nu$ ); O and C denote the open-channel and closed-channel flows, respectively; and FD, FV, and SP represent finite-difference, finite-volume, and spectral methods, respectively. The numbers in the FD and FV methods represent the order of accuracy for the adopted spatial discretization schemes.

	$Re_\tau, Re_g$	$Ri_\tau, Ri_b, h/L$	$\Delta x^+$	$\Delta y_{\max}^+$	$\Delta z^+$	O/C	Method
Iida et al. (2002)	$Re_\tau = 150$	$Ri_b = 0-0.54$	36.8	N/A	14.7	C	SP
Kasagi et al. (1992)	$Re_\tau = 150$	$Ri_\tau = 0$	18.4	4.9	7.4	C	SP
Nieuwstadt (2005)	$Re_\tau = 360$	$h/L = 0.41-2.05$	18.0	N/A	18.0	O	FV2
Nagaosa and Saito (1997)	$Re_\tau = 150$	$Ri_\tau = 0-20$	14.7	4.7	7.4	O	FD2
Barnard (2000)	$Re_g = 400$	$Ri_b = 0-0.1$	14.2	N/A	14.2	O	SP
Flores and Riley (2011)	$Re_\tau = 360, 560$	$h/L = 0-2.05$	12.0	6.0	6.0	O	SP
Deusebio et al. (2011)	$Re_\tau = 360$	$h/L = 0-1.5$	11.8	N/A	5.9	O	SP
Moser et al. (1999)	$Re_\tau = 180-590$	$Ri_\tau = 0$	9.7-17.7	4.4-7.2	4.8-6.5	C	SP
Brethouwer et al. (2012)	$Re_\tau = 80-334$	$Ri_\tau = 0-985$	9.4-15.6	N/A	4.7-7.8	O	SP
Bernardini et al. (2014)	$Re_\tau = 550-4079$	$Ri_\tau = 0$	9.2-10	N/A	6.1-6.7	C	FD2
Kawamura et al. (1999)	$Re_\tau = 180, 395$	$Ri_\tau = 0$	9.0-9.9	N/A	4.5-4.9	C	FD2
Garg et al. (2000)	$Re_\tau = 180$	$Ri_\tau = 0-45$	8.8-17.6	5.5	4.4	C	SP
Dong and Lu (2005)	$Re_\tau = 180$	$Ri_\tau = 0-20$	8.8	N/A	6.6	O	FD2
Zonta et al. (2012)	$Re_\tau = 110-180$	$Ri_\tau = 0-926$	5.4-8.8	N/A	2.7-4.4	C	SP
García-Villalba and del Álamo (2011)	$Re_\tau = 180, 550$	$Ri_\tau = 0-1920$	8.8-9.0	5.9-6.7	4.1-4.4	C	SP
Ansorge and Mellado (2014)	$Re_g = 500-1000$	$Ri_b = 0-0.62$	4.1-5.9	N/A	4.1-11.7	O	FD6
Current configuration	$Re_\tau = 180-550$	$Ri_\tau = 0-2880$	8.8-12	5.5-6.5	4.4-6.0	O	FV2

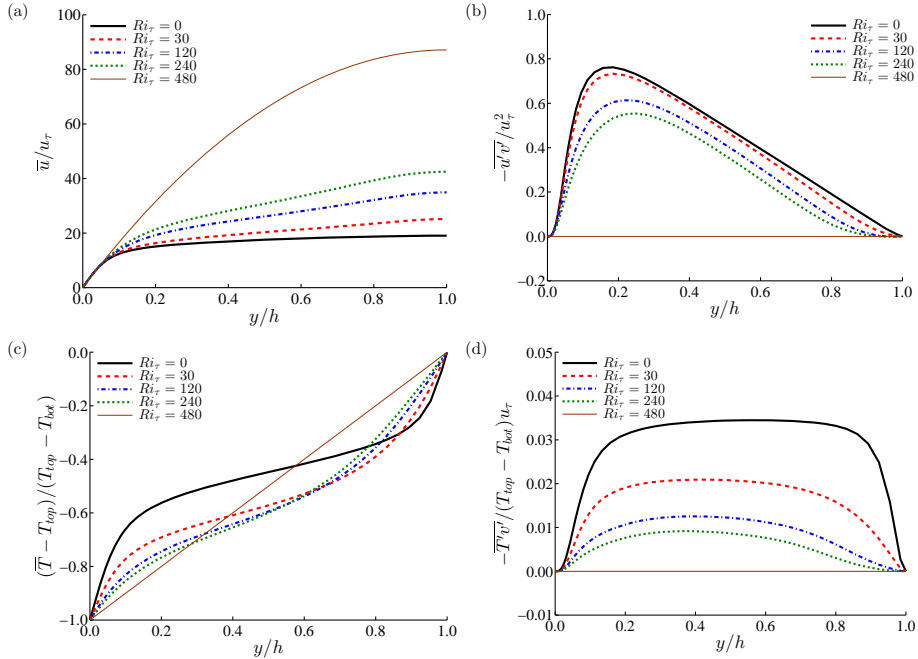


**Figure 1.** Intermittent time-series of vertical velocity observed in field and laboratory experiments. **(a)** Kansas, USA (Nakamura and Mahrt, 2005). **(b)** Cabauw, the Netherlands. **(c)** Summit, Greenland (Cullen et al., 2007). **(d)** Wind-tunnel experiment (Ohya et al., 2008).

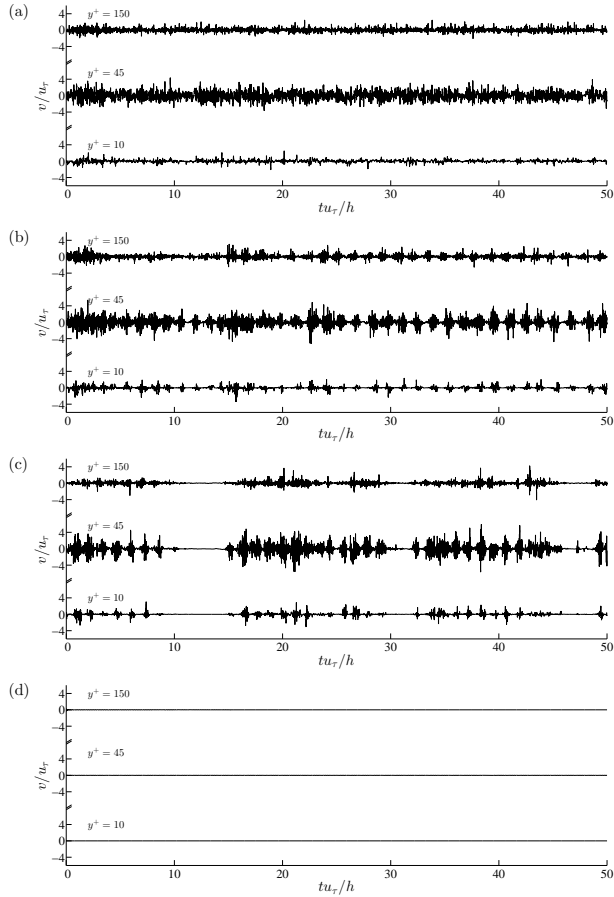




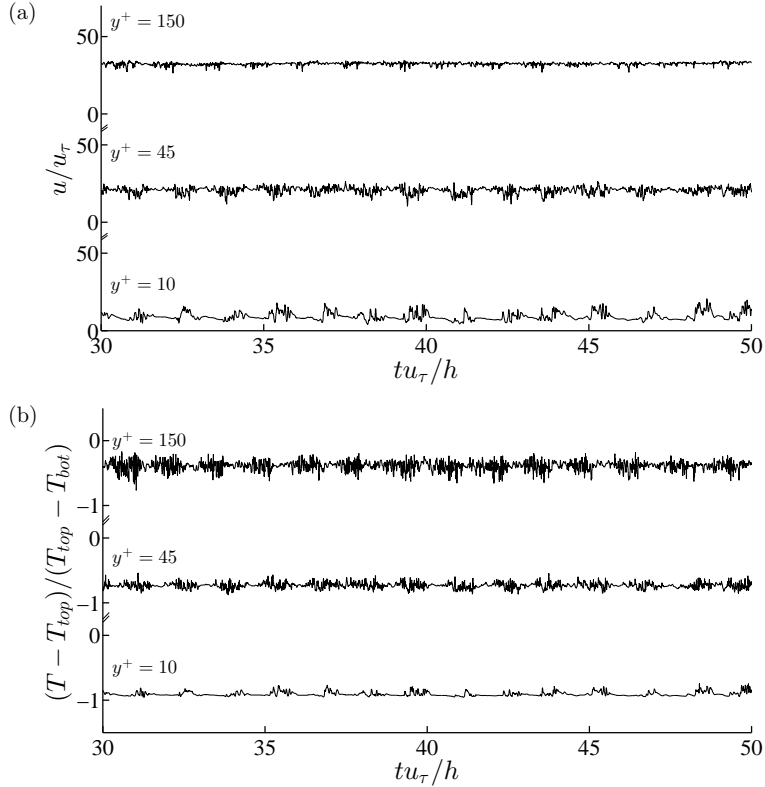
**Figure 2.** Illustration of the computational domain, where  $x$ ,  $y$ , and  $z$  are streamwise, vertical, and spanwise directions, respectively. The red short-dashed and blue long-dashed lines define a horizontal  $(x-z)$  plane and a spanwise  $(x-y)$  plane, respectively.



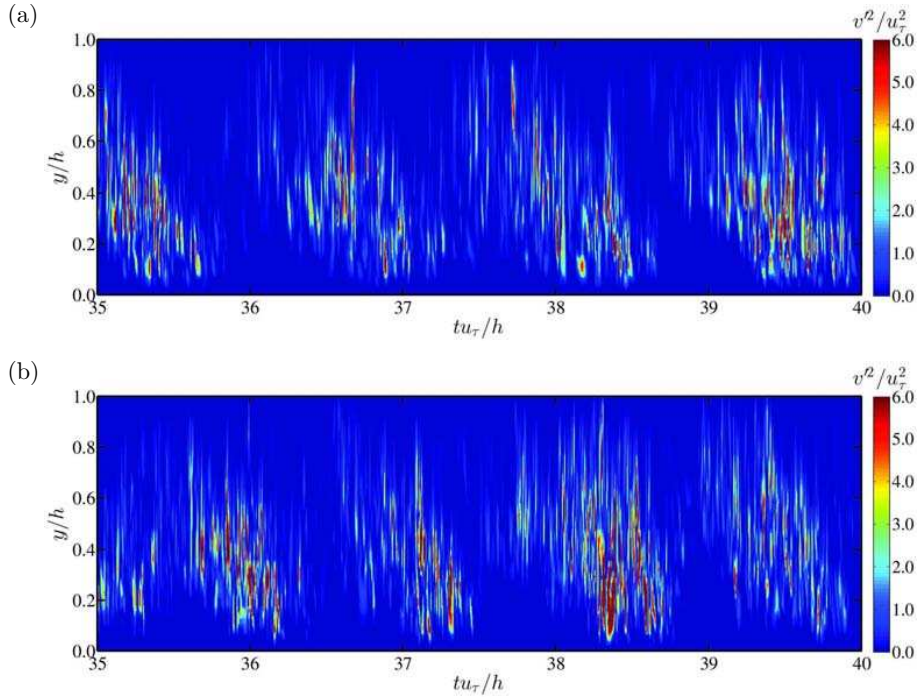
**Figure 3.** Vertical distributions of variables with different  $Ri_\tau$  ( $Re_\tau = 180$ ). **(a)** Mean streamwise velocity ( $\bar{u}$ ), **(b)** turbulent momentum-flux ( $-\bar{u}'v'$ ), **(c)** mean temperature ( $\bar{T}$ ), and **(d)** turbulent heat-flux ( $-\bar{T}'v'$ ).



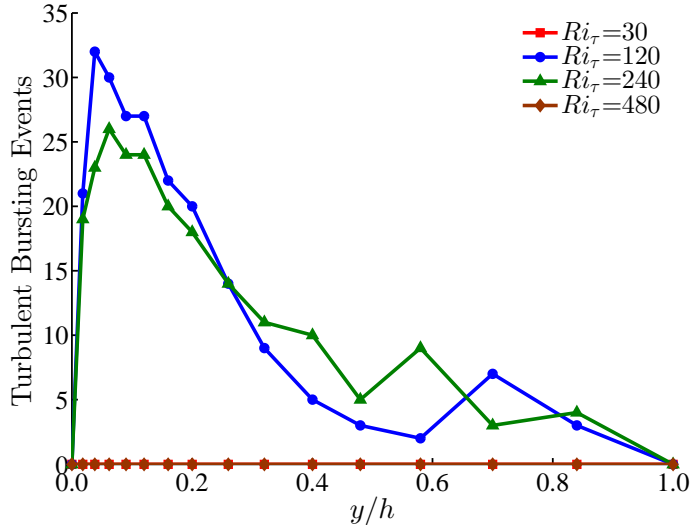
**Figure 4.** Time-series of vertical velocity in the channel with different  $Ri_\tau$  ( $Re_\tau = 180$ ). **(a)**  $Ri_\tau = 30$ , **(b)**  $Ri_\tau = 120$ , **(c)**  $Ri_\tau = 240$ , and **(d)**  $Ri_\tau = 480$ .



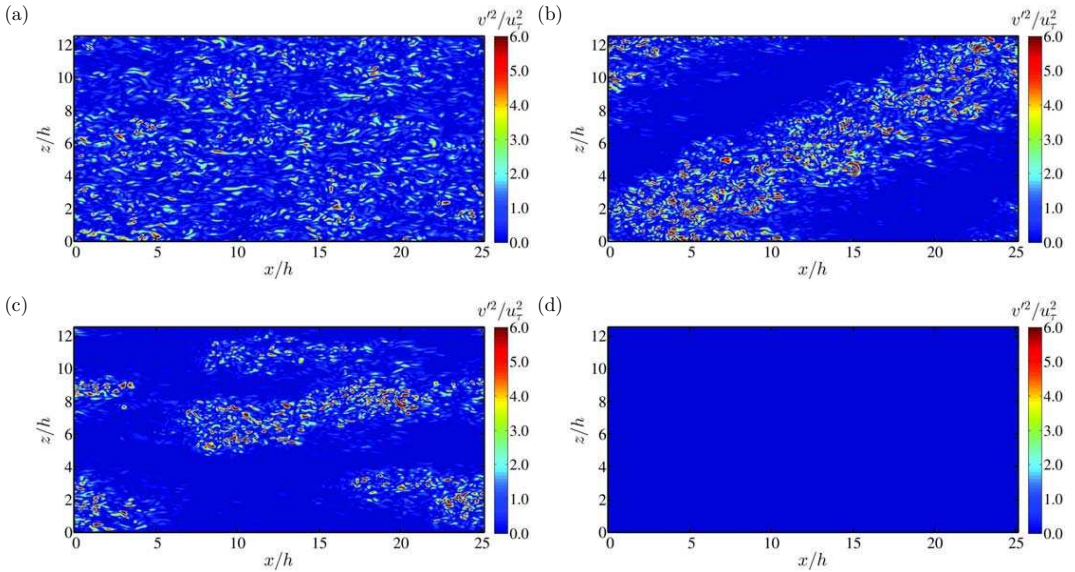
**Figure 5.** Time-series of streamwise velocity and temperature in the channel at  $Re_\tau = 180$ ,  $Ri_\tau = 120$ . **(a)** Streamwise velocity,  $u$ , and **(b)** temperature,  $T$ .



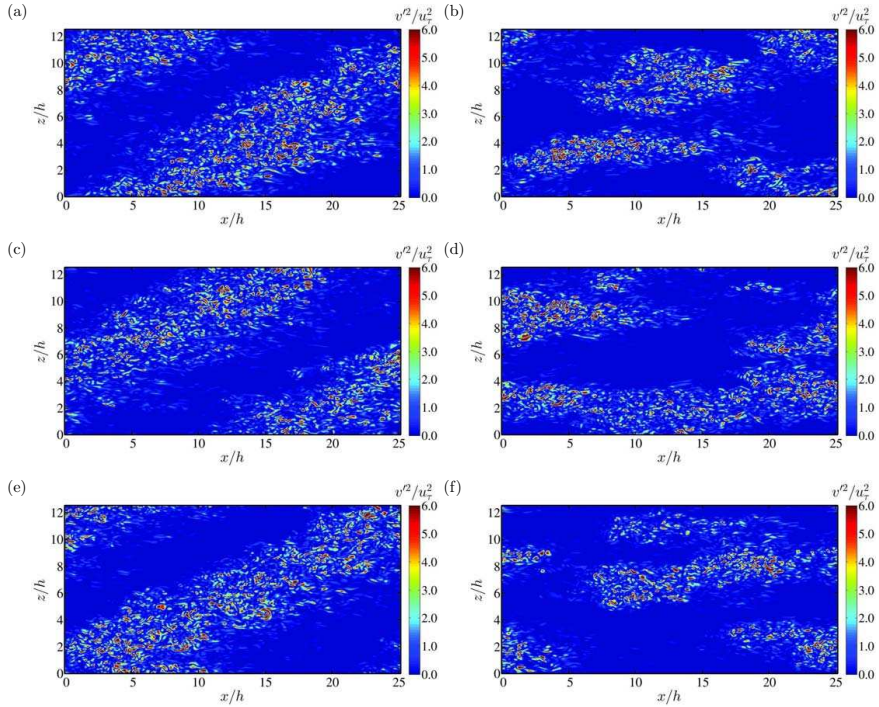
**Figure 6.** Time-height plots of square of instantaneous vertical velocity ( $v^2$ ) in the channel ( $Re_\tau = 180$ ). (a)  $Ri_\tau = 120$ , and (b)  $Ri_\tau = 240$ .



**Figure 7.** Vertical distribution of turbulent bursting events with different  $Ri_\tau$  in the channel ( $Re_\tau = 180$ ). The turbulent bursting events are calculated within 50 non-dimensional time.

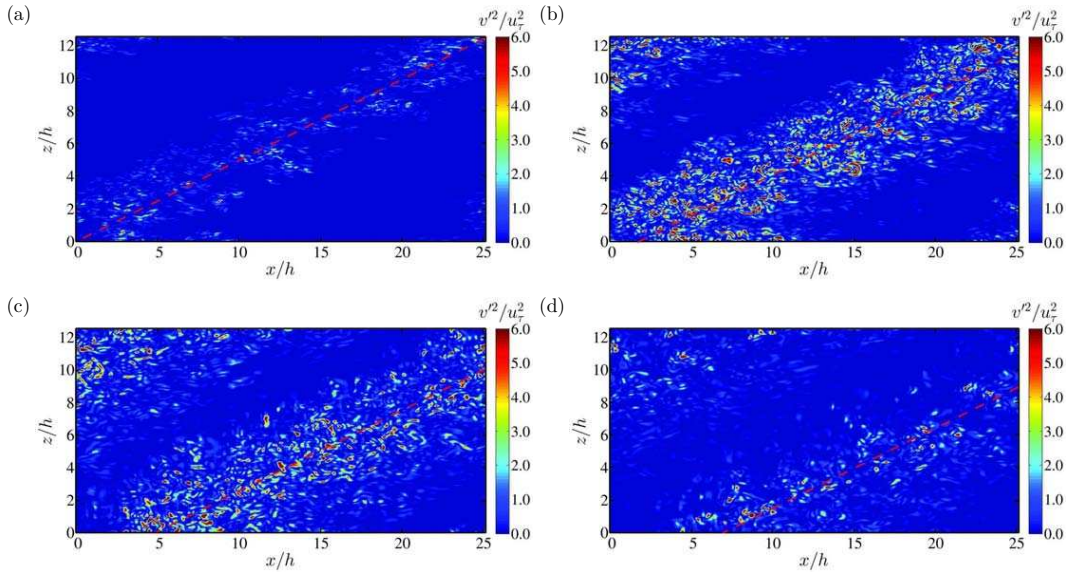


**Figure 8.** Instantaneous contours of  $v'^2$  at a horizontal ( $x$ - $z$ ) plane with different  $Ri_\tau$  ( $Re_\tau = 180$ ). The  $x$ - $z$  plane is located at  $y^+ = 45$  (see Fig. 2 for the definition of the  $x$ - $z$  plane). **(a)**  $Ri_\tau = 30$ , **(b)**  $Ri_\tau = 120$ , **(c)**  $Ri_\tau = 240$ , and **(d)**  $Ri_\tau = 480$ .

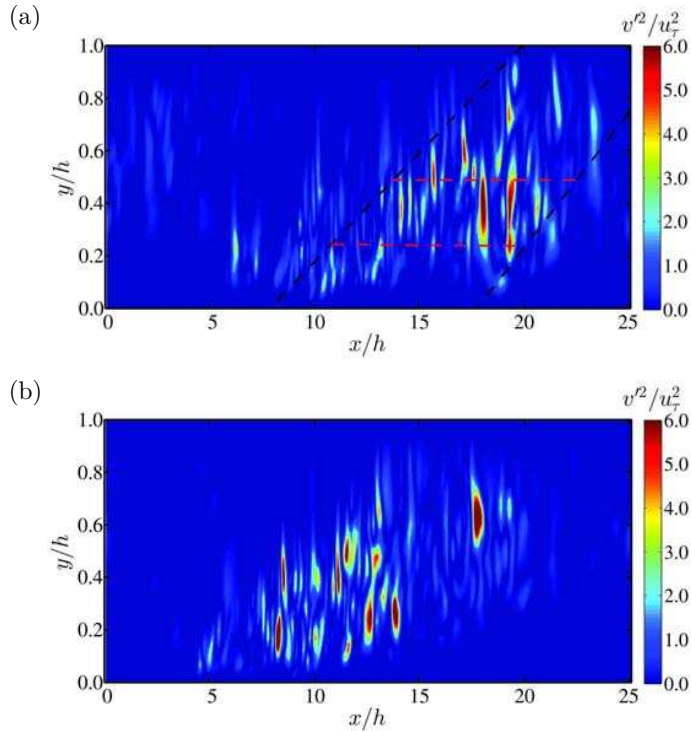


**Figure 9.** Instantaneous contours of  $v^2$  at different times ( $Re_\tau = 180$ ). The  $x$ - $z$  planes are located at  $y^+ = 45$ . **(a)**  $Ri_\tau = 120$ ,  $t^* = 36$ , **(b)**  $Ri_\tau = 240$ ,  $t^* = 36$ , **(c)**  $Ri_\tau = 120$ ,  $t^* = 38$ , **(d)**  $Ri_\tau = 240$ ,  $t^* = 38$ , **(e)**  $Ri_\tau = 120$ ,  $t^* = 40$ , and **(f)**  $Ri_\tau = 240$ ,  $t^* = 40$ .

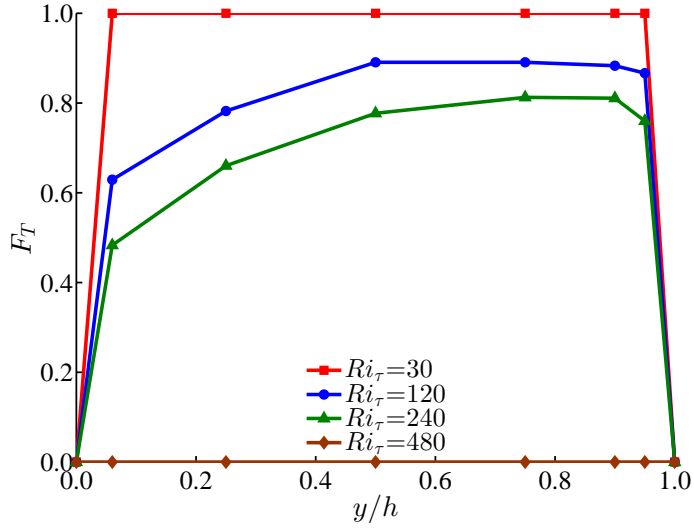




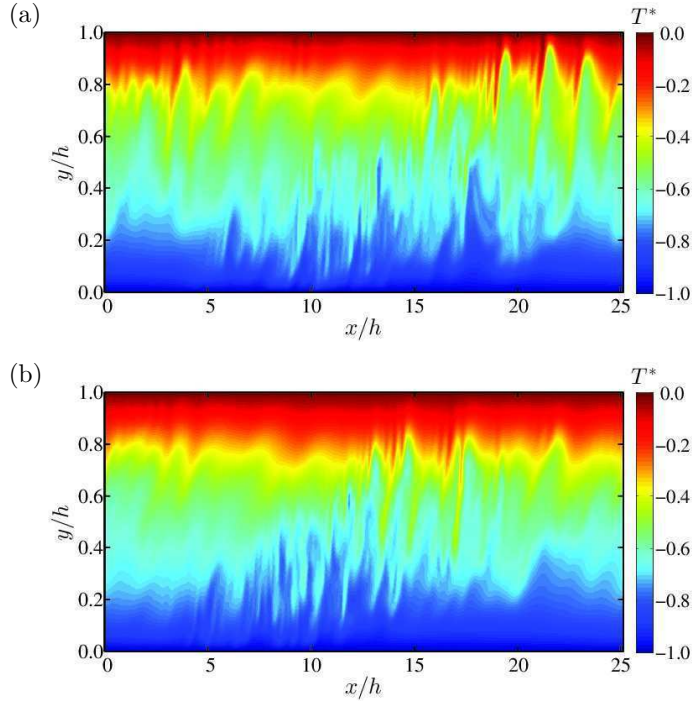
**Figure 10.** Instantaneous contours of  $v'^2$  at different horizontal planes ( $Re_\tau = 180$ ,  $Ri_\tau = 120$ ). The red dashed line denotes the approximate center of the turbulent bands. **(a)**  $y^+ = 10$ , **(b)**  $y^+ = 45$ , **(c)**  $y^+ = 90$ , and **(d)**  $y^+ = 135$ .



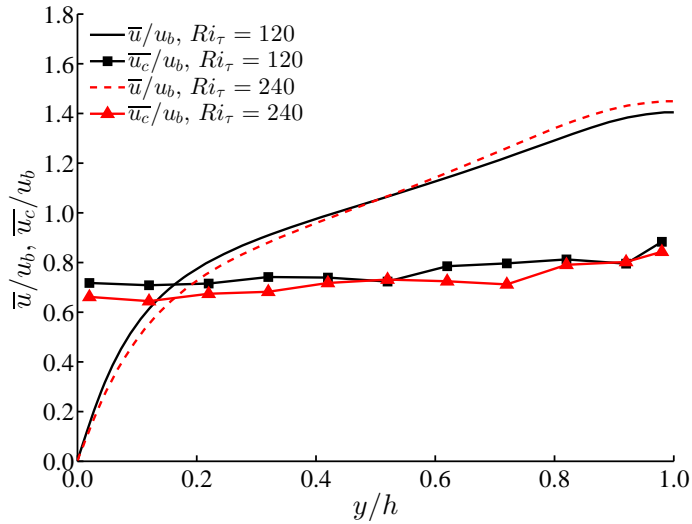
**Figure 11.** Instantaneous contours of  $v^2$  at the mid spanwise plane (not to scale,  $Re_\tau = 180$ ). Please refer to Fig. 2 for the definition of the spanwise plane. The black dashed lines denote the approximate boundary of the turbulent bands at different vertical locations and the red dashed lines represent the width of the turbulent bands observed in the  $x$ - $z$  plane in Fig. 10. **(a)**  $Ri_\tau = 120$ ,  $z/h = 2\pi$ , **(b)**  $Ri_\tau = 240$ ,  $z/h = 2\pi$ .



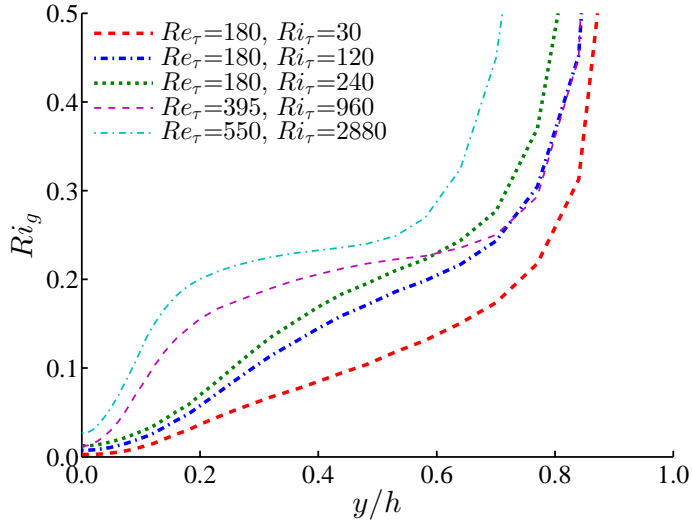
**Figure 12.** Vertical distribution of turbulent fraction ( $F_T$ ) with different  $Ri_\tau$  ( $Re_\tau = 180$ ).



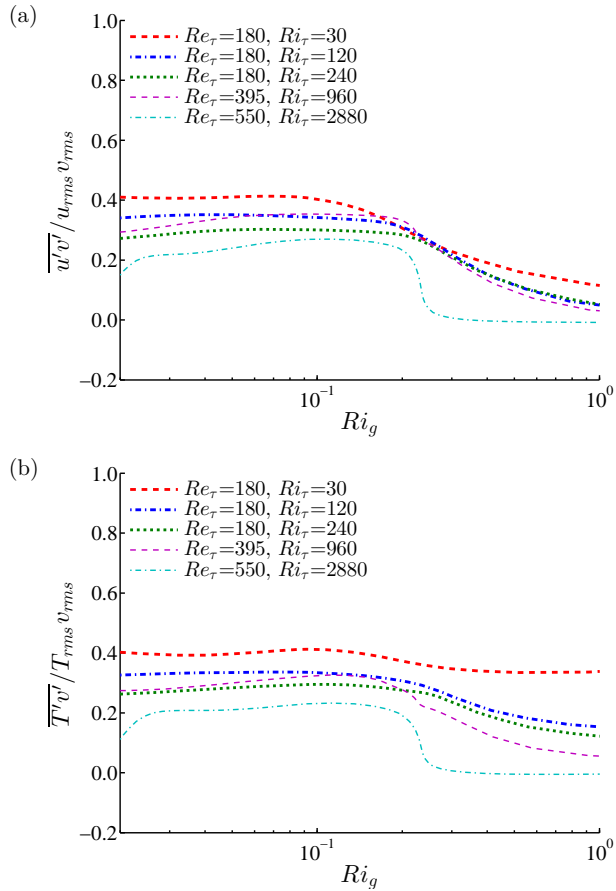
**Figure 13.** Instantaneous contours of temperature at the mid spanwise plane (not to scale,  $Re_\tau = 180$ ). **(a)**  $Ri_\tau = 120$ ,  $z/h = 2\pi$ , **(b)**  $Ri_\tau = 240$ ,  $z/h = 2\pi$ .



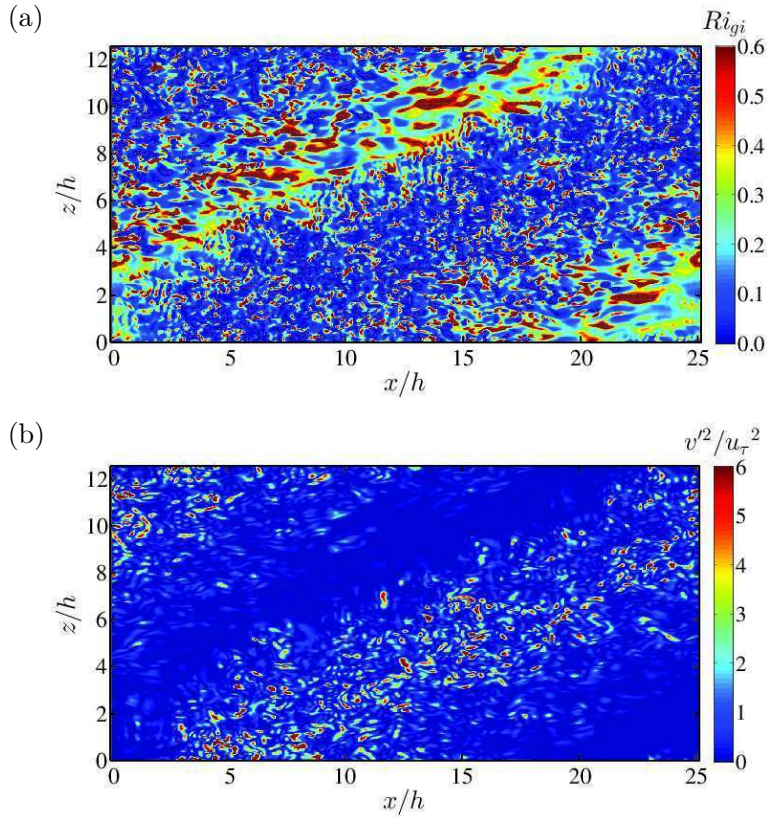
**Figure 14.** Profiles of mean velocity ( $\bar{u}$ ) and convection velocity ( $\bar{u}_c$ ) of intermittent turbulence ( $Re_\tau = 180$ ).



**Figure 15.** Vertical distribution of gradient Richardson number ( $Ri_g$ ) in the channel.

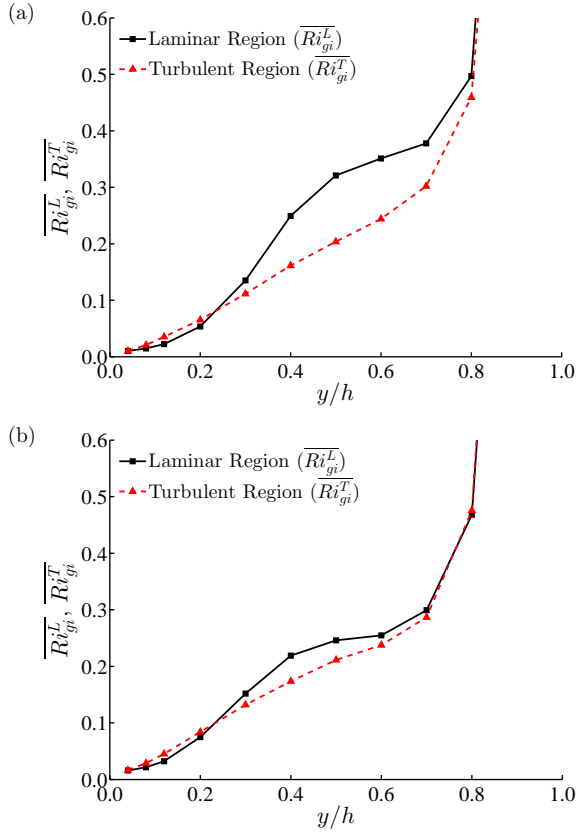


**Figure 16.** Distribution of  $Ri_g$  with respect to correlation coefficient of (a) momentum and (b) heat fluxes.

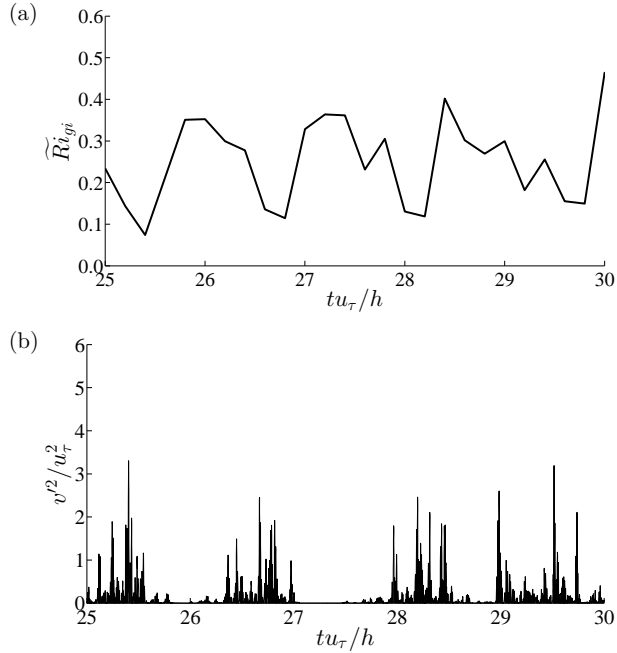


**Figure 17.** Instantaneous contour of (a)  $Ri_{gi}$  and (b)  $v^2$  at the horizontal plane with  $y^+ = 90$  ( $Re_\tau = 180$ ,  $Ri_\tau = 120$ ).

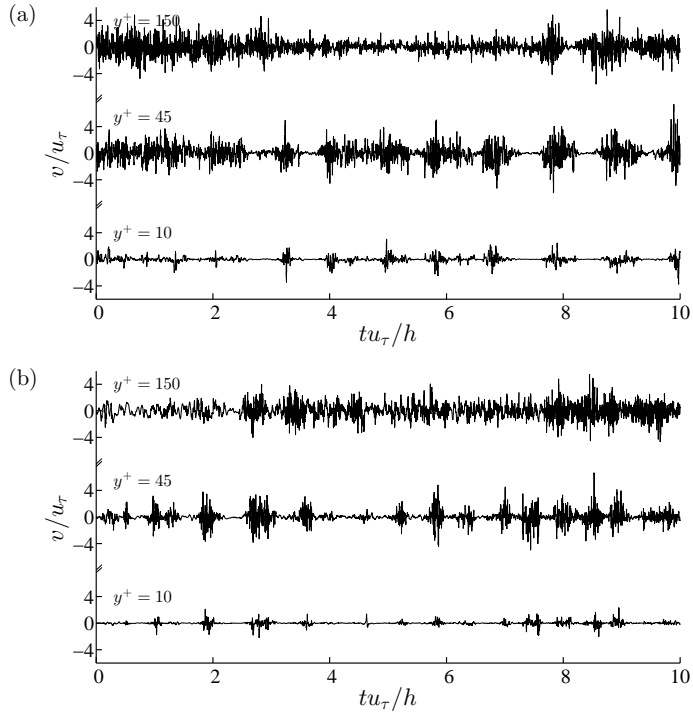




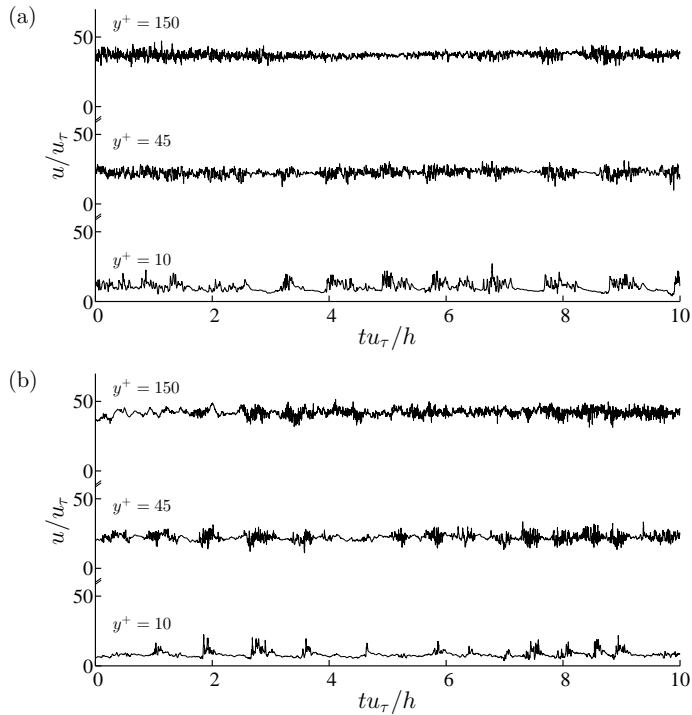
**Figure 18.** Profiles of plane-averaged  $Ri_g$  in the turbulence and laminar regions ( $Re_\tau = 180$ )  
**(a)**  $Ri_\tau = 120$ , **(b)**  $Ri_\tau = 240$ .



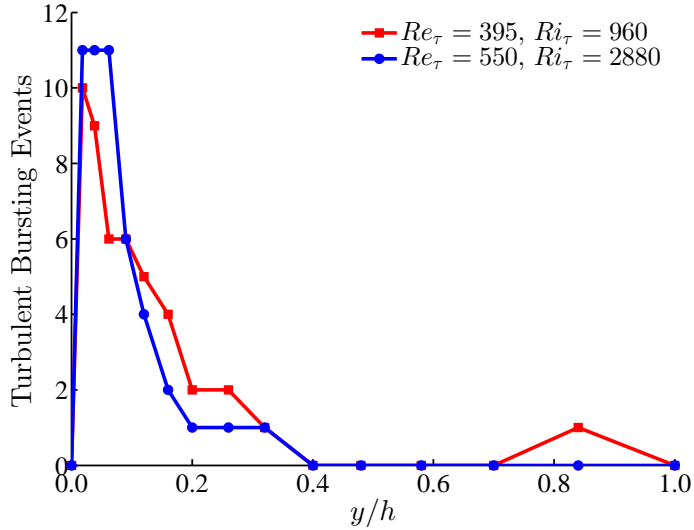
**Figure 19.** Time-series of (a)  $\widetilde{Ri_{gi}}$  and (b)  $v'^2$  at the central-channel with  $y^+ = 90$  ( $Re_\tau = 180$ ,  $Ri_\tau = 120$ ).



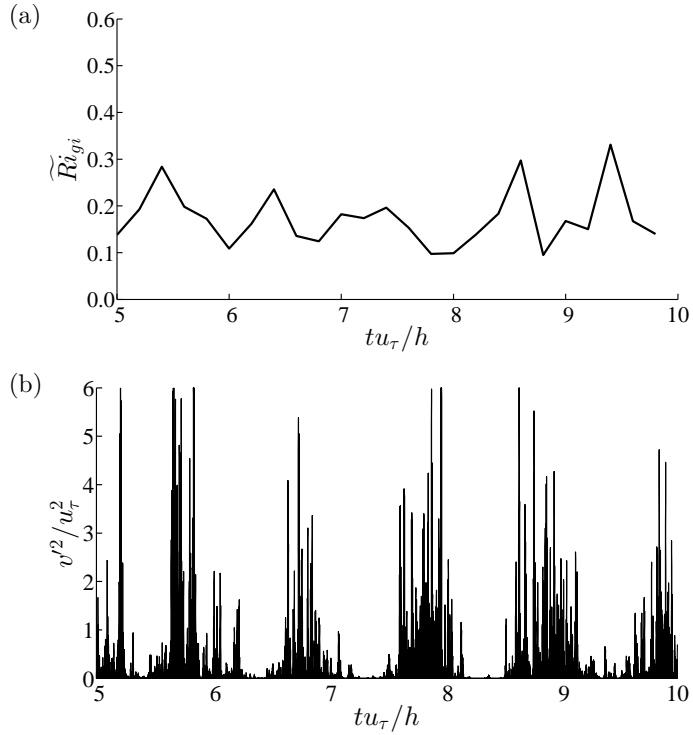
**Figure 20.** Time-series of vertical velocity in the channel. **(a)**  $Re_\tau = 395$ ,  $Ri_\tau = 960$ , and **(b)**  $Re_\tau = 550$ ,  $Ri_\tau = 2880$ .



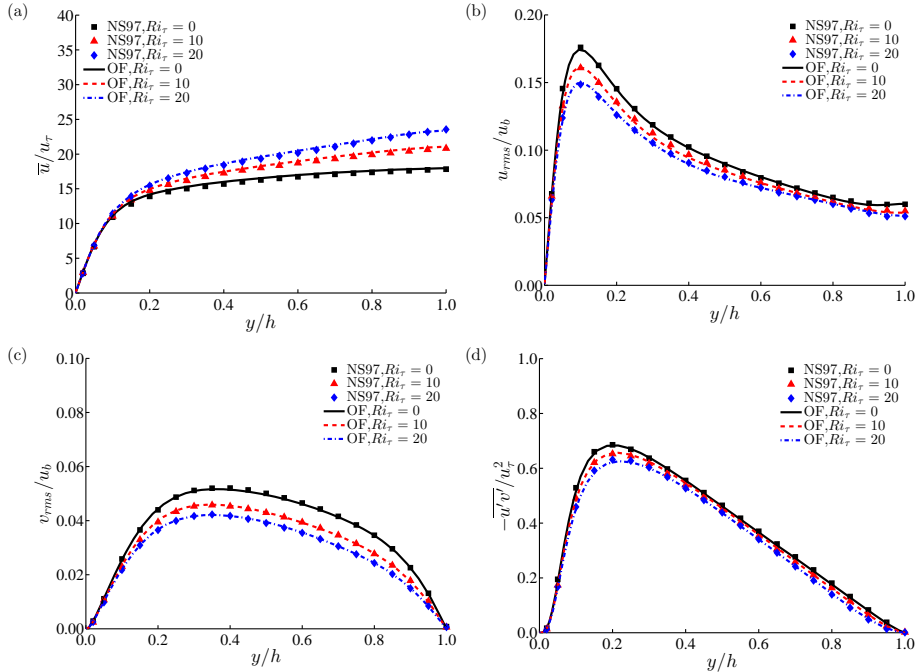
**Figure 21.** Time-series of streamwise velocity in the channel. **(a)**  $Re_\tau = 395$ ,  $Ri_\tau = 960$ , and **(b)**  $Re_\tau = 550$ ,  $Ri_\tau = 2880$ .



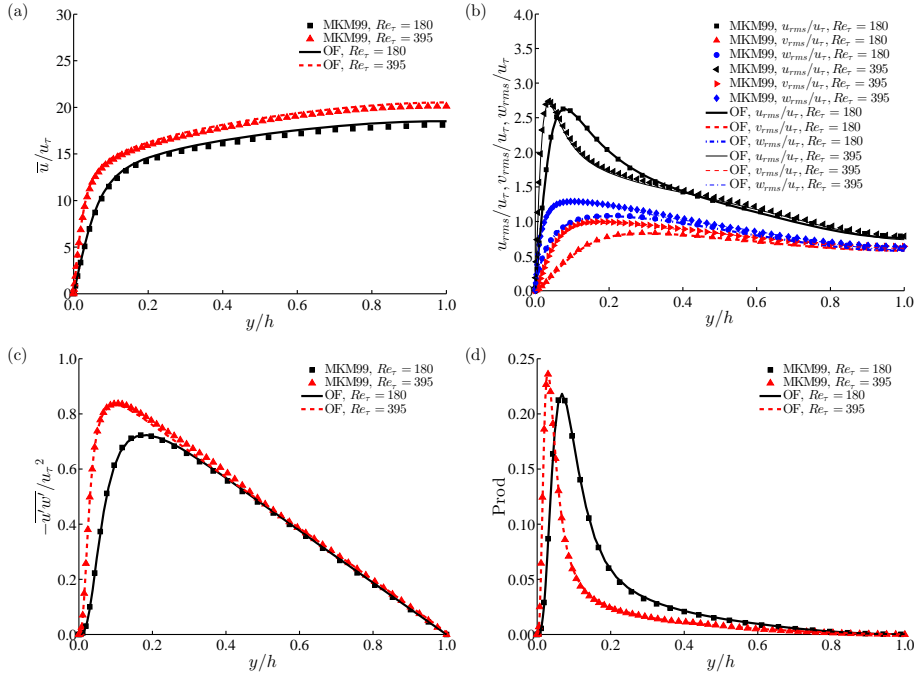
**Figure 22.** Vertical distribution of turbulent bursting events in the channel. The turbulent bursting events are calculated within 10 non-dimensional time.



**Figure 23.** Time-series of (a)  $\widetilde{Ri}_{gi}$  and (b)  $v'^2$  at  $y^+ = 90$  ( $Re_\tau = 395$ ,  $Ri_\tau = 960$ ).

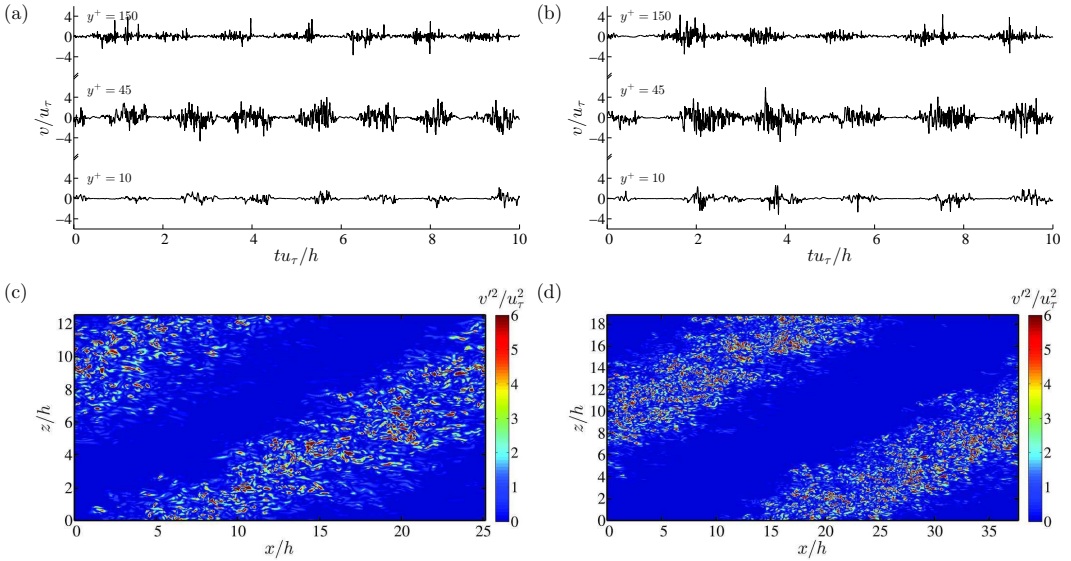


**Figure A1.** Comparisons of variables for neutral and stratified flows,  $Ri_\tau = 0, 10, 20$ . The lines are the results by current solver (OF), and the symbols are results from Nagaosa and Saito (1997) (NS97). **(a)** Mean velocity, **(b)** rms streamwise velocity, **(c)** rms vertical velocity, and **(d)** turbulent momentum-flux.

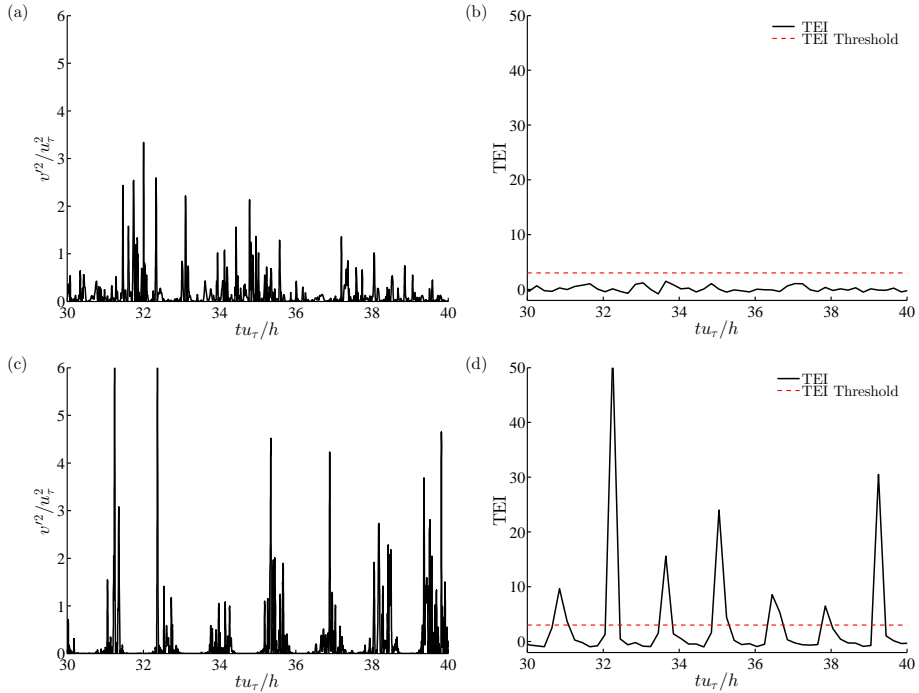


**Figure A2.** Comparisons of variables for neutral flows,  $Ri_\tau = 0$ . The lines are the results from the current solver (OF), and the symbols are results from Moser et al. (1999) (MKM99). The production of TKE are normalized by  $\nu/u_\tau^4$ . **(a)** Mean velocity, **(b)** rms velocity, **(c)** turbulent momentum-flux, and **(d)** production of turbulence kinetic energy.





**Figure A3.** Influence of simulation configurations on the spatio-temporal characteristics of intermittency ( $Re_\tau = 180$ ,  $Ri_\tau = 120$ ). (a) and (b) are time-series of vertical velocity in the channel; (c) and (d) are instantaneous contours of  $v^2$  at the  $x$ - $z$  plane located at  $y^+ = 45$ . For (a) and (c), the horizontal grid resolutions are  $\Delta x^+ = 5.9$  and  $\Delta z^+ = 2.9$ , and the domain sizes are  $L_x/h = 8\pi$  and  $L_z/h = 4\pi$ ; for (b) and (d), the horizontal grid resolutions are  $\Delta x^+ = 8.8$  and  $\Delta z^+ = 4.4$ , and the domain sizes are  $L_x/h = 12\pi$  and  $L_z/h = 6\pi$ .



**Figure A4.** Time-series of  $v'^2$  and TEI at  $y^+ = 10$  ( $Re_\tau = 180$ ). The red dash line denotes the threshold for TEI. **(a)**  $v'^2$ ,  $Ri_\tau = 30$ , **(b)** TEI,  $Ri_\tau = 30$ , **(c)**  $v'^2$ ,  $Ri_\tau = 120$ , and **(d)** TEI,  $Ri_\tau = 120$ .