

Letter to the Editor and the Referees

Predicting climate extremes - a complex network approach

M. Weimer, S. Mieruch, G. Schädler and C. Kottmeier

Dear Dr. Kurths, dear Referees,

We herewith submit the revised version of our manuscript, now entitled “**Decadal prediction of heat periods based on regional climate model data – a complex network approach**”.

We have considered all points raised by the referees and we think that the paper has been clearly improved now.

We rearranged the “Methods” section with the motivation of our approach as an extra section in the paper and by introducing new subsections for pre-processing of the data, standard approach, new approach and introduction of the prediction skill. In addition, we included a new subsection to demonstrate how to predict the number of heat periods for real forecasts with our new approach.

Due to the very helpful comments regarding the fact that our network approach could detect also undesired cold periods, we expanded our algorithm and removed cold data points prior to the analysis. Accordingly, the results have been improved clearly. Now, the network method is superior in 5 out of 8 regions in Europe. Due to this, we simplified the significance test and just answered the question “What is the probability to be superior with one method in 5 out of 8 regions by chance?”. Based on a surrogate test we found that this result is significant.

Regarding the comment by referee #1:

p149215-7: It would be interesting to see where the error of the network approach to heat wave detection comes from in the different $(r; d)$ cases. There are two possibilities, as far as I can see:

1. the network approach to heat wave detection does simply not work
2. the network approach to heat wave detection does work but the CCLM simulations are bad

You can check which possibility applies to which case by comparing $m_d^r(W)$ with W_τ based on CCLM data (let me call this M_{CCLM}) to $m_d^r(W)$ with W_τ based on E-OBS data (as in Fig. 4; let me call this M_{EOBS}). If M_{CCLM} is similar to M_{EOBS} we have possibility 1 while if $M_{CCLM} \gg M_{EOBS}$ we have possibility 2, right?! Please do this analysis and discuss your findings.

As mentioned in the review answers, we have already shown that the network approach works well, by applying the method to observational data shown in Fig. 4. We included now in the

supplementary material the corresponding plots E-OBS number of heat periods vs. E-OBS link strength, where it can be clearly seen that the method works well in most regions and decades. However, it is clear that the link strength, as we used it, is not equivalent to counting heat periods. It is an alternative estimator with advantages and disadvantages. Additionally, our assumption is that the standard approach is the “error-free” truth in detecting the number of heat periods. But there is of course also uncertainty in estimating the number of heat periods in E-OBS data.

We know that the prediction skill of the ensemble is rather weak, which is of course a problem. Nevertheless, we tested the suggestion of referee #1, but we think it is not necessary to include this analysis in the paper. We investigated the reasons for the discrepancies between E-OBS number of heat periods and the CCLM link strength (Fig. 6). Particularly, it is the question if our approach does not work or if it is a result of the low prediction skill of decadal predictions. Exactly as suggested by the referee, we calculated:

$$M_{\text{EOBS}} = \left| \frac{1}{10} \sum_{\tau=1}^{10} (\Omega_{d,\tau}^r - \xi_{d,\tau}^r) \right| = |\bar{\Omega}_d^r - \bar{\xi}_d^r|, \quad (1)$$

and

$$M_{\text{CCLM}} = \left| \frac{1}{10} \sum_{\tau=1}^{10} (\Omega_{d,\tau}^r - \psi_{d,\tau}^r) \right| = |\bar{\Omega}_d^r - \bar{\psi}_d^r|, \quad (2)$$

where Ω , ξ and ψ denote the rescaled values of EOBS number of heat periods, EOBS link strength and CCLM link strength, respectively.

The corresponding rank matrix is shown in the figure below. We found that in 26 of the 40 (r,d) boxes the differences $M_{\text{CCLM}} - M_{\text{EOBS}}$ are greater than or near zero (colored red and white), or the red/white boxes dominate in 6 regions, respectively. Therefore, the differences in the temporal evolution between E-OBS and CCLM time series are rather a result of the uncertain decadal predictions, which supports the usefulness of the network method.

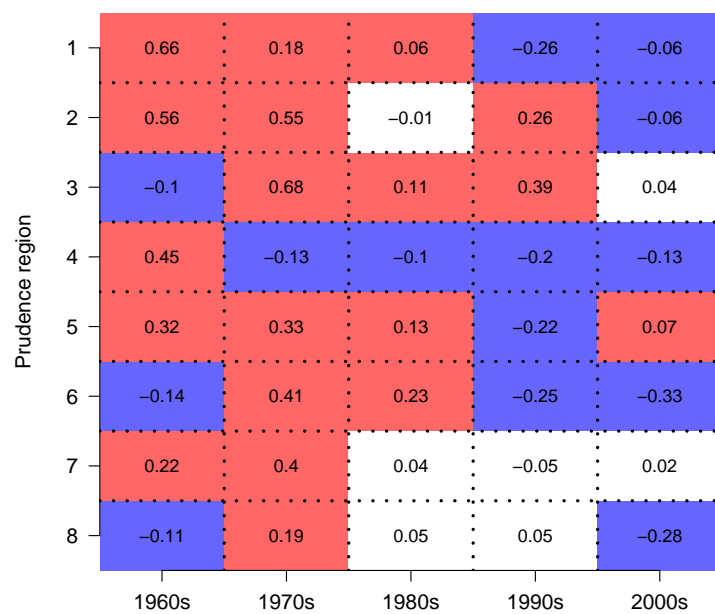


Figure 1: Rank matrix of differences between the absolute mean differences according to Eqs. (2) and (1).

Dear Dr. Kurths,

we have already answered the referee comments point by point during the interactive discussion. You can find our answers in the discussion's part of <http://www.nonlin-processes-geophys-discuss.net/npg-2015-52/>.

Relevant changes in the current version of the manuscript are:

1. changed title: "Decadal prediction of heat periods based on regional climate model data – a complex network approach"
2. new section for the motivation of our approach
3. rearranged structure of the Method's section including a subsection for prediction of the number of heat periods
4. adapted method to minimize the effect of cold periods
5. Results' section enlarged by a significance test concluding that our method is significant on the 5 % level

This is, of course, only an overview of the relevant changes. Please find below the marked-up version of all changes in the new manuscript with respect to the latest version.

Manuscript prepared for Nonlin. Processes Geophys. Discuss.
with version 2014/09/16 7.15 Copernicus papers of the \LaTeX class copernicus.cls.
Date: 1 February 2016

~~Predicting~~ Decadal prediction of heat periods based on regional climate extremes model data – a ~~complex network approach~~

M. Weimer, S. Mieruch, G. Schädler, and C. Kottmeier

Institute of Meteorology and Climate Research, Karlsruhe Institute of Technology,
Karlsruhe, Germany

Correspondence to: M. Weimer (michael.weimer@kit.edu)

Abstract

Regional decadal predictions have emerged in the past few years as a research field with high application potential, especially for extremes like heat and drought periods. However, up to now the prediction skill of decadal hindcasts, as evaluated with standard methods is moderate, and for extreme values even rarely investigated. In this study, we use hindcast data from a regional climate model (CCLM) for ~~8-eight~~ regions in Europe ~~to construct and quantify the skill of the model alternatively by constructing~~ time evolving climate networks and use the network correlation threshold (link strength) as a predictor for heat periods. We show that the skill of the network measure to predict the low frequency dynamics of heat periods is ~~similar to the one of the standard approach, with the potential of being even better in some regions~~ superior to the typical approach of using a fixed temperature threshold for estimating the number of heat periods in Europe.

1 Introduction

Decadal prediction is a relatively new field in climate research. Skillful prediction of climate from years up to a decade would be beneficial for our society, economy and for a better adaption to a changing climate. Within the large international ~~GMIP5-project (Coupled Model Intercomparison Project Phase 5, Taylor et al., 2012)~~ (CMIP5 Taylor et al., 2012) global decadal predictions of climate key variables like temperature and precipitation have been performed with state-of-the-art Earth system models. In order to validate the prediction skill of the models so called hindcast experiments are conducted. That means, the models are initialized with observations e.g. in 1961 and then run freely for 10 years and stop at the end of 1970. In 1971, the models are again initialized and start to run for another 10 years and so on. More advanced approaches of initializing every year have ~~been also followed~~ followed as well. These hindcasts can be evaluated against observational data to quantify the prediction skill of the models depending on the lead time, which is the time range between the initialization and the forecast datum of interest. In recent years, several

studies on decadal predictions have shown the potential of these initialized (global) model runs (e.g. Keenlyside et al., 2008; Müller et al., 2012; Matei et al., 2012; van Oldenborgh et al., 2012; Corti et al., 2012; Doblas-Reyes et al., 2013; García-Serrano et al., 2013; Smith et al., 2013; Meehl et al., 2014; Chikamoto et al., 2015). However most studies concentrate on regions like the Tropical Pacific or North Atlantic and on slowly evolving variables like sea-surface temperature. These regions receive their predictability from large scale processes like the ~~AMOC~~ (Atlantic Meridional Overturning Circulation) ~~or~~ ~~PDO~~ ((~~AMOC~~) ~~or~~ Pacific Decadal Oscillation (~~PDO~~)) and thus allow to extract predictable signals out of the noise. To be useful for society, and climate change adaption, regional climate predictions are required which should provide skillful forecasts on smaller regions, shorter periods, and include climate extreme events on populated land areas like the European continent. The European climate is more connected to short term processes like ~~NAO~~ (the North Atlantic Oscillation (~~NAO~~)), which is to a certain extent predictable on seasonal scales, whereas the decadal predictable signal is weak (Scaife et al., 2014), which has been shown also for temperature and precipitation in large projects like ENSEMBLES (MacLeod et al., 2012). Further, the complex orography with the Alps in the center ~~contribute~~ ~~contributes~~ to a manifold of general weather situations and hence to a complex climate (~~e.g. CORDEX-EU, Jacob et al., 2013; Giorgi et al., 2009~~) (~~e.g. World Climate Research Program~~). Nevertheless, the European continent is influenced by the AMOC and thus this process may yield to a certain predictability, although the signal to noise ratio is most probably small. Up to now, the prediction skill for Europe is weaker than for such regions as the South Pacific or North Atlantic. Mieruch et al. (2014) have used a regional decadal hindcast ensemble for Europe and detected moderate prediction skill for summer and winter temperature and summer precipitation anomalies ~~in the order~~ ~~within the lead time~~ of five years. Eade et al. (2012) analyzed the predictability of temperature and precipitation extremes in a global model and found a moderate but significant skill (correlation) for seasonal extremes. They also ~~find~~ ~~found~~ skill beyond the first year, but this skill ~~arises~~ ~~arose~~ from external forcing. Thus, Eade et al. (2012) compared initialized climate predictions with uninitialized

projections to evaluate the skill gained by initializing and excluding the external forcing. They found that the “... impact of initialization is disappointing”.

~~On the other hand an innovative approach~~ Another relatively new field in climate research has been established ~~in the recent years~~, namely the complex climate network approach.

The general idea of climate networks is to consider climate time series e.g. at the grid points of a climate model as nodes of the network and the statistical connection between the time series as links of the network. A link between two arbitrary time series (geolocations) exists, if the correlation measure between the time series exceeds a certain threshold.

The climate network community has been very active in recent years. Tsonis et al. (2007) proposed “A new dynamical mechanism for major climate shifts” and explained e.g. decadal shifts in global mean temperature (Tsonis and Swanson, 2012). Radebach et al. (2013) ~~discriminate~~ discriminated different El Niño types using the network approach, Ludescher et al. (2013) developed a network method to improve El Niño forecasting and Donges et al. (2011) revealed a connection between (paleo-) climate variability and human evolution using recurrence-networks, which are similar to the complex climate networks. Generally, it has been shown that climate networks contain useful information for climate applications, e.g. the relation between climate and topography found by Peron et al. (2014), dynamics of the sun activity using visibility graphs (Zou et al., 2014) and the prediction of extreme floods Boers et al. (2014).

~~Extremes like heat periods are defined as events which coherently exceed a threshold over a certain time-space domain. From a complex network perspective the node degree describes correlation (above a threshold) of data also on a time-space domain. Therefore, the area-averaged node degree and thus the link strength could be an indicator for extreme events like heat periods.~~ In this paper, we exploit this idea the idea to use an alternative heat period estimator, based on complex climate networks, and show that its skill is ~~similar to the skill of the standard approach and has the potential to improve the~~ superior to the typical approach of using a fixed temperature threshold for prediction of heat periods on time scales up to a decade.

In Sect. 2 we introduce the daily maximum temperature data used in this study [and motivate our approach in Sect. 3](#). Section 4 describes our approach, which includes the preparation of the data, the definition of heat periods and the construction of time evolving climate networks. The results [, for applying the new approach to hindcasts are](#) shown in Sect. 5, [indicate that the network measure is equally skillful as the standard approach and in some regions in Europe can be the better estimator of heat periods](#). Finally, we give the conclusions and an outlook in Sect. 6.

2 Data

We apply the climate network approach to a decadal prediction ensemble generated within the German research project MiKlip [. The regional climate model \(Mittelfristige Klimaprognosen, Decadal Climate Prediction, e.g. Kadow et al. \(2015\)\) by the regional COSMO model in CLimate Mode \(COSMO-CLM \(Consortium for small scale modeling in climate mode\), called CCLM hereafter is described in or CCLM\)](#) Doms and Schättler (2002). CCLM has been used in numerous studies recently e.g. in Kothe et al. (2014); Dosio et al. (2015), a comprehensive overview can be found here: <http://www.clm-community.eu>. CCLM has been used to downscale global decadal predictions from the [MPI-ESM \(Stevens et al., 2013\) global model Earth System Model of the Max Planck Institute for Meteorology \(MPI-ESM, Stevens et al., 2013\)](#). From a suite of different decadal prediction experiments we have selected the so-called regional baseline 0 ensemble. This ensemble consists of 10 members [each, , each](#) covering the period 1961–2010 for the European region (according to CORDEX-EU Jacob et al., 2013; Giorgi et al., 2009) on a 0.22° grid. This ensemble has already been used by Mieruch et al. (2014).

The regional baseline 0 ensemble (based on the global MPI-ESM model) has been initialized every 10 years (1961, 1971, 1981, 1991, 2001). Within a decade the CCLM model runs freely, except for the prescription of the atmospheric boundary conditions by the global MPI-ESM model.

More details on the development of the ensemble and the initialization can be found in Matei et al. (2012), Müller et al. (2012), Mieruch et al. (2014).

In the study presented here we use daily maximum near-surface temperatures from the CCLM model and from the E-OBS v8.0 gridded climatology (Haylock et al., 2008) for the European continent.

For our comparison, we use the so-called Prudence regions <http://prudence.dmi.dk/>, namely British Isles, Iberian Peninsula, France, Central Europe, Scandinavia, Alps, Mediterranean and Eastern Europe shown in Fig. 1.

3 Method Motivation

~~Our hypothesis is that complex network measures may be complementary or even better estimators for climate extremes than standard measures like absolute threshold exceedances.~~ Generally, heat periods are maximum temperature values persisting for several days and occurring on spatially expanded regions. This means that many temperature time series (grid points) behave in a “cooperative mode” (see e.g. Ludescher et al. (2013)). This cooperative state can be described by the link strength, i.e. essentially the correlation between time series, of a climate network. Thus, the link strength of a climate network could turn out to be the better heat period estimator for model data, because it is independent of the typically critical thresholds used in classical extreme value detection.

~~As mentioned before, we use the case of heat periods to illustrate the method.~~ The standard estimator for heat periods according to the WMO World Meteorological Organization (WMO) is that the daily maximum temperature is 5K above the 1961–1990 mean maximum temperature at five consecutive days at least (Frich et al., 2002). Thus, the standard approach method to compare the prediction skill of heat periods between observations and model would be to count the heat periods e.g. for each year in an observational reference data set and similarly in the model data, both according to the WMO definition (cf. Fig. 2).

As an alternative heat period estimator, we propose to use the time-varying link-strength W_τ (τ represents the years) of a network. A crucial problem of the standard estimator for model predictions is the inherent static threshold used to detect heat periods. Although this threshold can be adapted to the model climatology the problem is that it is still likely that the model slightly undershoots or otherwise slightly misses the threshold if a true heat period occurs, assuming the model exhibits at least some predictive skill.

To account for this situation in decadal predictions we propose a new method, based on modeled daily maximum temperature time series. The link strength W_τ is the correlation threshold between time series complex climate networks, to detect heat periods, which is needed to construct a network of a given edge density (more details below). Accordingly independent of a fixed temperature threshold. Again we want to show that W_τ has the potential to be at least as good as, or even a better estimator for observational heat periods than the standard estimator. This approach is similar to that used by Ludescher et al. (2013), who forecasted El Niño events using the link-strength of a network and showed the superiority to standard sea surface temperature predictions by state-of-the-art climate models emphasize that no new method for the detection of heat periods is needed, if past observational data is used. The WMO based definition works well. However, for detecting heat periods in 10-yearly initialized forecast/hindcast data, new methods are needed. Not only to overcome the threshold problem, but also to consider complex long-term climate evolution in contrast to short-term weather.

Figure 2 illustrates the motivation schematically, assuming. The following schematic examples in Figs. 2a-c and Fig. 3 illustrate why the complex network approach is able to detect heat periods without using a temperature threshold. The black curves represent (artificially generated) daily maximum temperature model data. Further we assume that one heat period has actually occurred, and assuming that the model has a certain prediction in Figs. 2a-c persisting for 15 days from day 11 to day 25. Accordingly the black curves show different possible model results if the model exhibits predictive skill to detect the a signal out of the noise.

Figure 2a depicts that using the standard approach the model correctly detects one heat period above the threshold. In Fig. 2b the model detects a signal, but this signal is too weak to cross the threshold, thus no heat period would have been detected and the model underestimates the number of heat periods. Overestimation of the number of heat periods happens in Fig. 2c, where the model detects two heat periods (5 days above the threshold). ~~At the edges and below the threshold in between.~~ Now, the key point for our motivation is that a heat period constitutes an event in space and time, thus in a certain region, many time series would look like the ones in Fig. 2. ~~Now, the~~ The link strength of a network would be given by the correlation between these coherent time series. ~~Generally,~~ Since the signals in ~~Fig~~Figs. 2a–c look quite similar ~~and,~~ the link strength of the network would thus be very similar in all three cases. Whereas the standard approach would correctly predict the heat period in only one case (Fig. 2a), the networks' link strength would correctly predict the heat period in all three cases, given a proper relation between link strength and heat periods.

To test the relation in principle, we created 100 artificial time series (Gaussian noise) and included successively 0–9 heat periods. Figure 3a shows such a time series with three artificial heat periods indicated by the dashed lines. In a following step, we calculated the mean correlation (link strength) between these 100 coherent time series dependent on the number of included heat periods depicted in Fig. 3b. As can be seen, ~~the relation is nearly linear, thus~~ more heat periods are connected with a larger link strength. This simplified test shows that a proper relation between link strength and heat periods could exist. Note that Fig. 3b is not a calibration curve for real data, because we simply used Gaussian noise to create the time series.

It is clear that the argumentation above concerning the link strength as a heat period estimator is quite simplistic, but it elucidates our approach and the main idea.

~~To apply the method we proceed as follows. Suppose we have initialized our climate model in the year 2001 with the ocean, soil, ice and atmospheric state at that time. Accordingly the climate model runs freely for 10 years, i.e. a retrospective decadal climate prediction. Now we are interested in the capability of the model to represent heat periods in summer. Based on the standard approach of counting heat~~

periods, according to the WMO definition, we could determine the prediction skill of the model in forecasting (hindcasting) the number of heat periods. Our approach, in contrast, is to create a time-evolving complex network with fixed edge density (Berezin et al., 2012; Radebach et al., 2013; Ludescher et al., 2013; Hlinka et al., 2014) from the modeled daily maximum temperature time series and use, as mentioned, the dynamics of the link strength W_T as a heat period estimator

4 Method

Our hypothesis is that complex network measures may be better estimators for climate extremes than standard measures like absolute threshold exceedances.

4.1 Data pre-processing

Before using the complex ~~network approach~~ networks in general it is necessary to remove ~~the~~ stationary biases and long-term variabilities from the climate time series (Donges et al., 2009).

We remove ~~the~~ bias, trend and the average annual cycle by subtracting a standard linear regression including a Fourier series from the time series ÷ according to:

$$y_i(t) = \underline{\mu} \delta_i + \omega_i t + \sum_{j=1}^2 \alpha_{i,j} \sin\left(\frac{2\pi j \cdot t}{365.25}\right) + \beta_{i,j} \cos\left(\frac{2\pi j \cdot t}{365.25}\right), \quad (1)$$

where $y_i(t)$ represents daily maximum temperature from 1961 to 2010, $\underline{\mu} \delta_i$ is the intercept, ω_i is the linear trend and $\alpha_{i,j}$ and $\beta_{i,j}$ represent the Fourier coefficients. Equation (1) is evaluated individually at each grid point $i = 1, \dots, N$.

In order to minimize the influence of cold periods on the network approach (details below in Sect. 4.3), we remove the data lower than the 10% quantile. This filtering has no influence on the standard estimator of heat periods. Then, the months from June to September are selected because we are interested in summer heat periods.

These summer anomalies are used for both the standard approach, defined in Sect. 4.2, and the new approach illustrated in Sect. 4.3. We introduce a skill measure to compare the number of heat periods with values of the link strength (Sect. 4.4). Finally we present a simple calibration formula to predict heat periods with the link strength, which can be applied to real forecasts in Sect. 4.1.

4.2 The standard approach for determining the number of heat periods

In this study, we define a heat period for E-OBS observational data as a time range when the anomaly maximum temperature (according to Eq. 1) exceeds a fixed threshold of 3K at five consecutive days at least, and additionally includes not less than 20% of the grid points in the area of interest. This choice has been made to observe events frequently enough for reliable statistics while simultaneously ensuring important impacts.

To account for the inherent model bias it is essential to adjust the temperature threshold to the model climate. Thus, we estimate the percentile \mathcal{P}^{3K} corresponding to the 3K E-OBS threshold for the complete time from 1961 to 2010 and the area of interest. Accordingly, we use this percentile as the threshold for heat periods for the model data which is nevertheless fixed for the whole area and time range and the argumentation of Sect. 3 still holds for the model data. Table 1 shows this threshold in K for the 8-eight Prudence regions, estimated from the CCLM ensemble means. ~~As could be expected, the threshold is higher for low latitudes~~In the following, we will refer to this definition as *standard approach*.

4.3 The new approach

As an alternative heat period estimator, we propose to use the time varying link strength W_{τ} (τ represents the years) of a network, based on modeled daily maximum temperature time series. The link strength W_{τ} is the correlation threshold between time series, which is needed to construct a network of a given edge density. Accordingly we want to show that W_{τ} has the potential to be a better estimator for observational heat periods than the standard estimator. This approach is similar to that used by Ludescher et al. (2013), who forecasted

El Niño events using the link strength of a network and showed the superiority to standard sea surface temperature predictions by state-of-the-art climate models. By contrast to Ludescher et al. (2013), however, we use the predicted 2m maximum temperature of CCLM to create the networks and to forecast the number of heat periods.

To apply the method we proceed as follows. Suppose we have initialized our climate model in the year 2001 with the ocean, soil, ice and atmospheric state at that time. Accordingly the climate model runs freely for 10 years, i.e. a retrospective decadal climate prediction. Now we are interested in the capability of the model to represent heat periods in summer. Based on the standard approach of counting heat periods (see Sect. 4.2) we could determine the prediction skill of the model in forecasting (hindcasting) the number of heat periods. Our approach, in contrast, is to create a time-evolving complex network with fixed edge density (Berezin et al., 2012; Radebach et al., 2013; Ludescher et al., 2013; Hlinka et al., 2014) from the modeled daily maximum temperature time series and use, as mentioned, the dynamics of the link strength W_{τ} as a heat period estimator.

Following our aim to use a network measure as a heat period estimator we construct a complex network from the daily maximum temperature model data. Here we use an undirected and unweighted simple **approachgraph**. Thus, the network consists of vertices V , which are the spatial grid points of our temperature data, and edges (connections) E , which are added between vertices and represent the statistical interdependence between the anomaly daily maximum temperature time series. This complex climate network can be represented by the symmetric adjacency matrix \mathbf{A} with:

$$A_{ij} = \begin{cases} 0 & \text{if } ij \text{ not connected} \\ 1 & \text{if } ij \text{ connected} \end{cases}, \quad (2)$$

where i and j represent the vertices, i.e. time series at grid points $i, j = 1, \dots, N$. Two grid points are connected if the correlation between their time series exceeds a predefined threshold. The statistical interdependence between pairs $\{ij\}$ (self-loops $\{ii\}$ are not allowed) of time series is measured using the Pearson (standard) correlation coefficient

(Donges et al., 2009). From sensitivity studies we found that correlations between time series in the order of 0.7–0.9 yield ~~acceptable results. That means that using these thresholds, we observe~~ patterns with not too few and not ~~to~~ too many connections. This is important in order to resolve temporal dynamics of the network. Correlations in this order of magnitude are significant on the 5% level for the here used summer time series with length of about 120 days. However, since we want to analyze different regions in Europe and to generate comparable results we decided to alternatively create our networks with a constant edge density (ratio of number of actual connections to maximum number of connections) of

$$\rho = E / \binom{N}{2} = \langle k_i \rangle / (N - 1) = 0.3, \quad (3)$$

where E is the number of edges and $\langle k_i \rangle$ is the mean *node degree* with

$$k_i = \sum_{j=1}^N A_{ij}, \quad (4)$$

which gives the number of connections of a vertex i .

~~We implemented an iterative correlation threshold adaption method, which creates networks for each area in Europe and each year with a constant~~ As mentioned above we removed the data lower than the 10% quantile, to avoid that the link strength W_T is influenced by possible cold periods in the data. We tested smaller quantiles (5%) and larger quantiles (20%) and found that the results are robust, i.e. they changed only slightly. The above used parameters (like the density of 0.3) and the 10% filtering turned out to be optimal for our data. For other data, these parameters most probably have to be adjusted. Additionally, by removing the data lower than the 10% quantile, gaps in the time series are generated. To ensure significance, we take into account only correlation coefficients where the two underlying time series exhibit 60 common data points (days). An effective way to estimate the link strength of a network with an edge density of $\rho = 0.3 \pm 0.00050.3$ is to calculate the 70% quantile of all correlation coefficients involved in the network.

In a similar way as Berezin et al. (2012) we analyze the temporal variation of the link strength W_τ , i.e the correlation threshold between time series (grid points) for a single year τ (summer) from 1961 to 2010. Thus, instead of using the *node degree* as an estimator of heat periods we use the link strength W_τ .

Using the definitions above, we finally construct a network for the summer months of each year based on anomaly maximum temperature model data. The quantity whose year-to-year variation we are interested in is the link strength W_τ ; however, since we are interested in ~~decadal~~ *decadal* variability, and since we do not expect the model to represent the year to year fluctuations, we applied a 10 year moving average filter to ~~the data~~ *both link strength and number of heat periods, subsequently*. Since the CCLM model has been initialized every decade (1961, 1971, ..., 2001) we apply the filter only within a decade in order to avoid transferring information between decades. *At the boundaries of the decades, the time range for the running average is shortened: For instance at the beginning of the decade, we use only the six years' mean (e.g. from 2001 to 2005), in the second year seven, and so on.*

4.4 *Comparison of the different quantities*

To quantify the prediction skill *of the model*, we calculate the absolute mean difference ~~between E-OBS heat periods (see Eqs. 6 and 7) between the number of heat periods in E-OBS (oand CCLM heat periods-) and CCLM (m and-) and the CCLM link strength (W_τ).~~ To be comparable we normalized the time series to the range $\{0,1\}$ by a subtraction of the minimum of the time series and accordingly a ~~division~~ *division* by the maximum for the whole time span, e.g. *for the number of heat periods in CCLM:*

$$m\mu_{d,\tau}^r = \left(m_{d,\tau}^r - \min_{\tau=1} (m_{d,\tau}^r) \right) / \max_{\tau=1} \left(m_{d,\tau}^r - \min_{\tau=1} (m_{d,\tau}^r) \right) \quad (5)$$

where r denotes the European region, d stands for the decade and τ represents the years. The similarly rescaled E-OBS number of heat periods will be denoted as Ω and the rescaled CCLM link strength as ψ .

Thus the absolute mean difference ~~between~~ (based on normalized data) between observation and model heat periods for a region r and a decade d is given by

$$M_d^r(\underline{m\mu}) = \left| \frac{1}{10} \sum_{\tau=1}^{10} \left(\underline{o\Omega_{d,\tau}^r - m - \mu_{d,\tau}^r} \right) \right| = |\overline{\Omega}_d^r - \overline{\mu}_d^r|, \quad (6)$$

and the mean difference between observation heat periods and model link strength is

$$M_d^r(\underline{W\psi}) = \left| \frac{1}{10} \sum_{\tau=1}^{10} \left(\underline{o\Omega_{d,\tau}^r - W - \psi_{d,\tau}^r} \right) \right| = |\overline{\Omega}_d^r - \overline{\psi}_d^r|, \quad (7)$$

where τ ~~represents the years within a decade and~~ the bars in the above equations denote temporal averages. ~~Thus~~ Therefore, if the absolute mean difference is about 0, observations and model agree well, whereas a difference of about 1 denotes the maximum discrepancy.

5 Results

4.1 Prediction of heat periods

~~Figure 4 shows that~~ For a real application of our method to predict the number of heat periods in a forecasting sense, a calibration step using observational data o is needed to convert the link strength W_τ is a suitable estimator of the model to the number of heat periods for France (Prudence region 3). m_y (the index y stands for year in the future). Therefore long hindcast data are needed. Based on our analysis we suggest as a first attempt to apply a linear conversion from link strength W_y to the number of heat periods m_y , which is also supported by our tests shown in Fig. 3:

$$m_{y,W}^r = \frac{W_y^r - \min_{\tau=1}^{50}(W_\tau^r)}{\max_{\tau=1}^{50}(W_\tau^r) - \min_{\tau=1}^{50}(W_\tau^r)} \cdot \left(\max_{\tau=1}^{50}(o_\tau^r) - \min_{\tau=1}^{50}(o_\tau^r) \right) + \min_{\tau=1}^{50}(o_\tau^r) \quad (8)$$

This linear approach corresponds to our skill analysis, where a linear connection between the link strength and the number of heat periods is assumed as well. Again we note that this study presents only the skill analysis of hindcast data and Eq. 8 is actually not used now.

5 Results

Figure 4 depicts the number of observed heat periods (solid line) and the corresponding link strength (dashed line) retrieved from the complex evolving network, both from E-OBS data. Figure 4 for France (Prudence region 3), and shows that the link strength W_τ is a suitable estimator of heat periods. It shows that the network contains climate information in the sense that the dynamics of the link strength W_τ is very similar to the dynamics of heat periods, both based on the same data. So, the link strength can here be considered as equivalent an estimator for heat periods which is comparable to the standard heat period estimator. Jumps between the decades occur as the running mean filter is only applied within the decades (see Sect. 4.3). The corresponding figures for the seven other Prudence regions can be found in the supplementary material.

Prudence region 5 (Scandinavia) As an example, Prudence region 8 (Eastern Europe) is a region where the network method performs better than the standard method approach (Figs. 5 and 6). Figure 5 shows the E-OBS number of heat periods o (black) and the CCLM ensemble mean number of heat periods m (blue) for France Eastern Europe together with the interquartile range (25th and 75th percentiles) IQR. As can be seen, the model cannot follow the observational reference, especially from 1970–2010, well. By contrast, the CCLM link strength, shown in Fig. 6 (red) follows the decadal variability of the E-OBS heat periods dynamics well. Thus, in this case the network measure is the better heat period estimator, and Fig. 6 shows again the E-OBS number of heat periods now compared to

the CCLM link strength. Comparing the absolute mean differences, denoted as M in the two figures reveals that our network approach enhances the skill in four decades, namely 1970, 1980, 1990, 2000. Especially the 1970s, 1980s, 1990s show a clear improvement and our network approach better reflects the low frequency dynamics of the heat periods. The 2000s seem to be off in both model cases, the number of heat periods and the link strength, which indicates a failed model initialization.

In order to see how the prediction skill of the standard as well as the network heat period estimators vary with the ~~region considered~~ considered region, we performed the same analysis as above for the ~~8-eight~~ Prudence regions in Europe and for the 1960s, 1970s, 1980s, 1990s and 2000s. The corresponding figures for the other regions can be found in the supplement. To summarize our results we calculated as the prediction skill the absolute mean difference within a decade between E-OBS heat periods and CCLM heat periods (Eq. 6) and E-OBS heat periods and CCLM link strength (Eq. 7) ~~based on normalized time series. The prediction skill “M” is also included in Figs. 5 and 6.~~ Figure 7 shows which method performs better regarding the ~~8-eight~~ regions (columns) and ~~5-five~~ decades (rows). Blue color in Fig. 7 indicates that the network approach performs better ($M_d^r(W) < M_d^r(m)$, $M_d^r(\psi) < M_d^r(\mu)$) and red color stands for a better performance of the standard ~~method~~ ($M_d^r(W) > M_d^r(m)$) approach ($M_d^r(\psi) > M_d^r(\mu)$). White boxes in Fig. 7 denote a tie between the methods in the case of too small differences ($|M_d^r(W) - M_d^r(m)| \leq 0.05$). ~~Interpreting the~~ $|M_d^r(\psi) - M_d^r(\mu)| < 0.05$). The matrix of Fig. 7 ~~we conclude~~ shows that the network method is superior in 3 regions (4, clearly superior in three regions (5,7,8) and slightly superior in two regions (4,6), the standard approach is superior in 2 regions (two regions (1 and 3,-8) and in 3 regions (-1, region 2,-7) we observed a tie, i.e. no clear result.

The crucial question is if this result indicates that the network method performs significantly better than the standard approach or not. However, testing for statistical significance bears serious problems. There are so many factors involved in the analysis, i.e. the models themselves, the downscaling, the ensemble, the initialization, the different regions, the filtering, etc. that any nullhypothesis would be not well-posed and any

test would be questionable. This issue is discussed in detail in a 2013 paper entitled "Testing ensembles of climate change scenarios for "statistical significance"" by climate statistics instances Hans von Storch and Francis Zwiers (von Storch and Zwiers, 2013), who claim that "... a statistical nullhypothesis may not be a well-posed problem ..." and "Even if statistical testing were completely appropriate, the dependency of the power of statistical tests on the sample size n remains a limitation on interpretation." and finally "... propose to employ instead a simple descriptive approach for characterising the information in an ensemble ...". Although we totally agree with the argumentation by (von Storch and Zwiers, 2013) that a "classical" significance test would most probably fail in our analysis, we think that alternative significance tests, based on bootstrapping or surrogate data, could definitely help for a better interpretation of the results. Thus, we construct the following significance test based on surrogate data to answer the question: "What is the probability of getting a rank matrix like the one in Fig. 7 by chance?".

First, we have to define what is the possibly "significant" characteristic of the matrix in Fig. 7. It is, as we concluded above, that the network method is superior in five regions. Thus the question is: "What is the probability to observe at least five regions, where we have in each at least one blue matrix element more than a red one by chance?". Accordingly we constructed matrices like in Fig. 7 by randomly coloring 20 matrix elements blue and 20 red. Afterwards we colored 8 matrix elements white as in Fig. 7. Finally, we repeated this surrogate procedure 1000 times and counted the cases (regions) where the blue matrix elements dominate. Table 2 shows the probabilities that blue matrix elements dominate in n regions. Since we have 16 blue elements and 16 red, it is sure that blue dominates in $n = 1$ region and impossible to dominate in $n = 7$ and $n = 8$ regions. As can be seen from Tab. 2 the probability of dominating in $n = 5$ regions by chance is only about 5%, thus the results of our network approach have to be stated significant. Due to the symmetry of the test, the same argumentation is valid for red matrix elements. Dominating in $n = 2$ regions, as achieved by the standard approach (Fig. 7), can be realized easily by chance with a probability of approx. 99%. Page 1 in the supplementary material shows an example of 12

of these randomly generated matrices, where one matrix, depicted by a black frame, fulfills the “significance” criterion.

6 Conclusions and outlook

We presented a novel approach examining ~~climate predictions~~ heat periods using a complex network analysis. We have investigated the predictability of the slow dynamics of the occurrence of heat periods in Europe based on daily maximum near-surface temperature data.

We found that the network approach ~~has similar skill as the standard method and has the potential~~ is superior (significance is $\approx 5\%$) to the standard approach in predicting heat periods in Europe, hence highlighting the potential of network methods to improve the ~~predictability of heat periods for some European regions~~ skill estimation in decadal prediction experiments. Picking up our hypothesis and simplified argumentation from Sect. 43, the crucial point why we detect heat periods with the network link strength is that heat periods are cooperative events in space and time. Thus, the link strength can be used as an estimator of heat periods. The drawback of the standard ~~method approach~~ is most probably the inflexible threshold for the detection of heat periods (cf. Fig. 2). If the climate model contains the signal of a heat period, but with a slightly too small amplitude, the threshold will not be crossed and no heat period will be detected. In contrast, the complex climate network does not depend on such fixed thresholds, and can use this information, which makes it the more robust estimator of heat periods. ~~At present, we have no explanation for the dependence of the skill on the region.~~

The general prediction skill of climate in Europe using standard measures is still moderate. In this sense our work adds new aspects to our previous study (Mieruch et al., 2014) and also the work of Eade et al. (2012) who found a strong variation of skill with region and decade. In essence, we found regions and decades in Europe where our climate model output, or more specifically the used network estimator, follows the slowly evolving dynamics of observed heat periods. We also found regions and decades, where

the network estimator is not able to represent the observational reference. Understanding of this variability in prediction skill is one of the future challenges of decadal predictions.

Concluding, our approach shows that the complex climate networks approach yields meaningful climate information and ~~can complement standard~~ has the potential to improve skill measures within the framework of climate prediction. ~~Furthermore, our study has given examples that~~ It is the first time that such network techniques have been used in climate predictions. Since climate or decadal predictions aim to predict natural variability in the order of years, suitable statistics are needed. Natural variability in the order of years evolves highly dynamical and often nonlinear. Thus, the complex climate ~~network approach has networks could bear~~ the potential to ~~improve climate prediction of extremes.~~

~~Several research questions remain and arise. From~~ be very useful in climate predictions. Our approach, which is even based on the most simple network measure, the node degree (or as we used it the link strength) yields optimistic results. So, we think that our analysis could be the starting point for using the complex networks in climate predictions, using other measures and/or multivariate data could turn out to be the better way of analyzing predictions of natural variability years ahead than using methods from short- or medium range forecasting. Further, from the network perspective it would be interesting to analyze other network measures like clustering, similarities or path lengths and how they are connected to climate evolution. ~~Additionally, the~~ The incorporation of other relevant variables like precipitation, wind or soil moisture into the network is an appealing aspect. From a physical or climatological point of view it is important to understand why the network measures are able to represent climate dynamics, which could also contribute to a better understanding of the sources of decadal predictability.

Thus, the incorporation and investigation of processes like the AMOC, PDO or NAO together with complex networks and climate prediction might be an option for the future.

Acknowledgements. We acknowledge the E-OBS dataset from the EU-FP6 project ENSEMBLES (<http://ensembles-eu.metoffice.com>) and the data providers in the ECA&D project (<http://www.ecad.eu>).

The research program MiKlip is funded by the German ministry of education and research (BMBF).

We also acknowledge the ETOPO1 data set (Amante and Eakins, 2009) from the NGDC (National Geophysical Data Center, Boulder, Colorado).

The article processing charges for this open-access publication were covered by a Research Centre of the Helmholtz Association.

References

- Amante, C. and Eakins, B.: ETOPO1 1 Arc-Minute Global Relief Model: Procedures, Data Sources and Analysis. NOAA Technical Memorandum, Tech. Rep. NESDIS NGDC-24, National Geophysical Data Center, NOAA, Boulder, Colorado, USA, doi:10.7289/V5C8276M, 2009.
- Berezin, Y., Gozolchiani, A., Guez, O., and Havlin, S.: Stability of climate networks with time, *Sci. Rep.*, 2, 666, doi:10.1038/srep00666, 2012.
- Boers, N., Bookhagen, B., Barbosa, H. M. J., Marwan, N., Kurths, J., and Marengo, J. A.: Prediction of extreme floods in the eastern Central Andes based on a complex networks approach, *Nat. Commun.*, 5, 5199, doi:10.1038/ncomms6199, 2014.
- Chikamoto, Y., Timmermann, A., Luo, J.-J., Mochizuki, T., Kimoto, M., Watanabe, M., Ishii, M., Xie, S.-P., and Jin, F.-F.: Skilful multi-year predictions of tropical trans-basin climate variability, *Nat. Commun.*, 6, 6869, doi:10.1038/ncomms7869, 2015.
- Corti, S., Weisheimer, A., Palmer, T. N., Doblas-Reyes, F. J., and Magnusson, L.: Reliability of decadal predictions, *Geophys. Res. Lett.*, 39, 21, doi:10.1029/2012GL053354, 2012.
- Doblas-Reyes, F. J., Andreu-Burillo, I., Chikamoto, Y., García-Serrano, J., Guemas, V., Kimoto, M., Mochizuki, T., Rodrigues, L. R. L., and van Oldenborgh, G. J.: Initialized near-term regional climate change prediction, *Nat. Commun.*, 4, 1715, doi:10.1038/ncomms2704, 2013.
- Doms, G. and Schättler, U.: A Description of the Non-Hydrostatic Regional Model LM, Part I: Dynamics and Numerics, Tech. rep., Deutscher Wetterdienst, P. O. Box 100465, 63004 Offenbach, Germany, LM_F90 2.18, 2002.
- Donges, J. F., Zou, Y., Marwan, N., and Kurths, J.: Complex networks in climatic dynamics, *The European Physical Journal Special Topics*, 174, 157–179, doi:10.1140/epjst/e2009-01098-2, 2009.

- Donges, J. F., Donner, R. V., Trauth, M. H., Marwan, N., Schellnhuber, H.-J., and Kurths, J.: Nonlinear detection of paleoclimate-variability transitions possibly related to human evolution, *P. Natl. Acad. Sci. USA*, 108, 20422–20427, 2011.
- Dosio, A., Panitz, H.-J., Schubert-Frisius, M., and Lüthi, D.: Dynamical downscaling of CMIP5 global circulation models over CORDEX-Africa with COSMO-CLM: evaluation over the present climate and analysis of the added value, *Clim. Dynam.*, 44, 2637–2661, doi:10.1007/s00382-014-2262-x, 2015.
- Eade, R., Hamilton, E., Smith, D. M., Graham, R. J., and Scaife, A. A.: Forecasting the number of extreme daily events out to a decade ahead, *J. Geophys. Res.-Atmos., Res.*, 117, D21110, doi:10.1029/2012JD018015, 2012.
- Frich, P., Alexander, L., Della-Marta, P., Gleason, B., Haylock, M., Klein Tank, A., and Peterson, T.: Observed coherent changes in climatic extremes during the second half of the twentieth century, *Clim. Res.*, 19, 193–212, 2002.
- García-Serrano, J., Doblas-Reyes, F. J., Haarsma, R. J., and Polo, I.: Decadal prediction of the dominant West African monsoon rainfall modes, *J. Geophys. Res.-Atmos.*, 118, 5260–5279, 2013.
- Giorgi, F., Jones, C., and Asrar, G.: Addressing climate information needs at the regional level: the CORDEX framework, *Bulletin of the World Meteorologic Organization*, 58, 175–183, 2009.
- Haylock, M. R., Hofstra, N., Klein Tank, A. M. G., Klok, E. J., Jones, P. D., and New, M.: A European daily high-resolution gridded data set of surface temperature and precipitation for 1950–2006, *J. Geophys. Res.*, 113, D20119, doi:10.1029/2008JD010201, 2008.
- Hlinka, J., Hartman, D., Jajcay, N., Vejmelka, M., Donner, R., Marwan, N., Kurths, J., and Paluš, M.: Regional and inter-regional effects in evolving climate networks, *Nonlin. Processes Geophys.*, 21, 451–462, doi:10.5194/npg-21-451-2014, 2014.
- Jacob, D., Petersen, J., Eggert, B., Alias, A., Christensen, O. B., Bouwer, L., Braun, A., Colette, A., Déqué, M., Georgievski, G., Georgopoulou, E., Gobiet, A., Menut, L., Nikulin, G., Haensler, A., Hempelmann, N., Jones, C., Keuler, K., Kovats, S., Kröner, N., Kotlarski, S., Kriegsmann, A., Martin, E., Meijgaard, E., Moseley, C., Pfeifer, S., Preuschmann, S., Radermacher, C., Radtke, K., Rechid, D., Rounsevell, M., Samuelsson, P., Somot, S., Soussana, J.-F., Teichmann, C., Valentini, R., Vautard, R., Weber, B., and Yiou, P.: EURO-CORDEX: new high-resolution climate change projections for European impact research, *Reg. Environ. Change*, 14, 1–16, 2013.
- [Kadow, C., S. Illing, O. Kunst, H. W. Rust, H. Pohlmann, W. A. Müller, and U. Cubasch \(2015\), Evaluation of forecasts by accuracy and spread in the miklip decadal climate prediction system, *Meteorologische Zeitschrift*, pp. –.](#)

- Keenlyside, N. S., Latif, M., Jungclaus, J., Kornblueh, L., and Roeckner, E.: Advancing decadal-scale climate prediction in the North Atlantic sector, *Nature*, 453, 84–88, 2008.
- Kothe, S., Panitz, H.-J., and Ahrens, B.: Analysis of the radiation budget in regional climate simulations with COSMO-CLM for Africa, *Meteorol. Z.*, 23, 123–141, doi:10.1127/0941-2948/2014/0527, 2014.
- Ludescher, J., Gozolchiani, A., Bogachev, M. I., Bunde, A., Havlin, S., and Schellnhuber, H. J.: Improved El Niño forecasting by cooperativity detection, *P. Natl. Acad. Sci. USA*, 110, 11742–11745, doi:10.1073/pnas.1309353110, 2013.
- MacLeod, D. A., Caminade, C., and Morse, A. P.: Useful decadal climate prediction at regional scales?, a look at the ENSEMBLES stream 2 decadal hindcasts, *Environ. Res. Lett.*, 7, 044012, doi:10.1088/1748-9326/7/4/044012, 2012.
- Matei, D., Pohlmann, H., Jungclaus, J., Müller, W., Haak, H., and Marotzke, J.: Two tales of initializing decadal climate prediction experiments with the echam5/mpi-om model, *J. Climate*, 25, 8502–8523, 2012.
- Meehl, G. A., Teng, H., and Arblaster, J. M.: Climate model simulations of the observed early-2000s hiatus of global warming, *Nature Climate Change*, 4, 898–902, doi:10.1038/nclimate2357, 2014.
- Mieruch, S., Feldmann, H., Schädler, G., Lenz, C.-J., Kothe, S., and Kottmeier, C.: The regional MiKlip decadal forecast ensemble for Europe: the added value of downscaling, *Geosci. Model Dev.*, 7, 2983–2999, doi:10.5194/gmd-7-2983-2014, 2014.
- Müller, W. A., Baehr, J., Haak, H., Jungclaus, J. H., Kröger, J., Matei, D., Notz, D., Pohlmann, H., von Storch, J. S., and Marotzke, J.: Forecast skill of multi-year seasonal means in the decadal prediction system of the Max Planck Institute for Meteorology, *Geophys. Res. Lett.*, 39, L22707, doi:10.1029/2012GL053326, 2012.
- Peron, T. K. D., Comin, C. H., Amancio, D. R., da F. Costa, L., Rodrigues, F. A., and Kurths, J.: Correlations between climate network and relief data, *Nonlin. Processes Geophys.*, 21, 1127–1132, doi:10.5194/npg-21-1127-2014, 2014.
- Radebach, A., Donner, R. V., Runge, J., Donges, J. F., and Kurths, J.: Disentangling different types of El Niño episodes by evolving climate network analysis, *Phys. Rev. E*, 88, 052807, doi:10.1103/PhysRevE.88.052807, 2013.
- Scaife, A. A., Arribas, A., Blockley, E., Brookshaw, A., Clark, R. T., Dunstone, N., Eade, R., Fereday, D., Folland, C. K., Gordon, M., Hermanson, L., Knight, J. R., Lea, D. J., MacLachlan, C., Maidens, A., Martin, M., Peterson, A. K., Smith, D., Vellinga, M., Wallace, E., Waters, J., and

- Williams, A.: Skillful long-range prediction of European and North American winters, *Geophys. Res. Lett.*, 41, 2514–2519, 2014.
- Smith, D., Eade, R., and Pohlmann, H.: A comparison of full-field and anomaly initialization for seasonal to decadal climate prediction, *Clim. Dynam.*, 41, 3325–3338, doi:10.1007/s00382-013-1683-2, 2013.
- Stevens, B., Giorgetta, M., Esch, M., Mauritsen, T., Crueger, T., Rast, S., Salzmann, M., Schmidt, H., Bader, J., Block, K., Brokopf, R., Fast, I., Kinne, S., Kornblueh, L., Lohmann, U., Pincus, R., Reichler, T., and Roeckner, E.: Atmospheric component of the MPI-M Earth System Model: ECHAM6, *Adv. Model. Earth Syst.*, 5, 146–172, doi:10.1002/jame.20015, 2013.
- Taylor, K. E., Stouffer, R. J., and Meehl, G. A.: An overview of CMIP5 and the experiment design, *B. Am. Meteorol. Soc.*, 93, 485–498, doi:10.1175/BAMS-D-11-00094.1, 2012.
- Tsonis, A. A. and Swanson, K. L.: Review article “On the origins of decadal climate variability: a network perspective”, *Nonlin. Processes Geophys.*, 19, 559–568, doi:10.5194/npg-19-559-2012, 2012.
- Tsonis, A. A., Swanson, K., and Kravtsov, S.: A new dynamical mechanism for major climate shifts, *Geophys. Res. Lett.*, 34, L13705, doi:10.1029/2007GL030288, 2007.
- van Oldenborgh, G. J., Doblas-Reyes, F. J., Wouters, B., and Hazeleger, W.: Skill in the trend and internal variability in a multi-model decadal prediction ensemble, *Clim. Dynam.*, 38, 1263–1280, 2012.
- [von Storch, H. and Zwiers, F. W.: Testing ensembles of climate change scenarios for "statistical significance", *Climatic Change*, 117, 2013.](#)
- Zou, Y., Donner, R. V., Marwan, N., Small, M., and Kurths, J.: Long-term changes in the north–south asymmetry of solar activity: a nonlinear dynamics characterization using visibility graphs, *Nonlin. Processes Geophys.*, 21, 1113–1126, doi:10.5194/npg-21-1113-2014, 2014.

Table 1. Ensemble mean variation of the temperature threshold calculated for heat periods [with the standard approach](#) in CCLM data ([see Sect. 4.2](#)).

Prudence region	1	2	3	4	5	6	7	8
Temperature threshold (in K)	3.16	3.38	2.81	2.52	2.66	2.85	3.46	2.79

Table 2. Probability that blue matrix elements in Fig. 7 dominate in n regions by chance. Half of the elements are colored blue and red, respectively, and eight white elements are randomly added subsequently.

Number of regions n	1	2	3	4	5	6	7	8
Probability in %	100	99	82	35	5	0.1	0	0

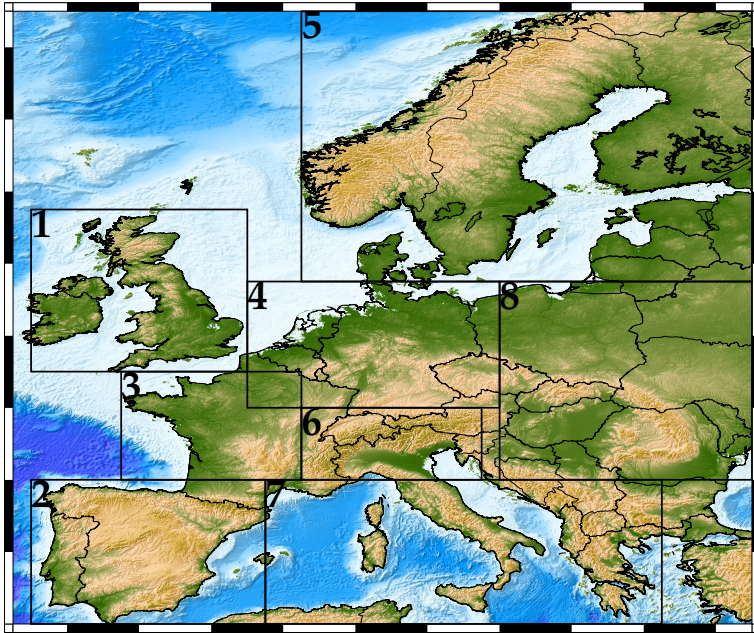


Figure 1. The 8 Prudence regions. (Topography: ETOPO1, Amante and Eakins, 2009.)

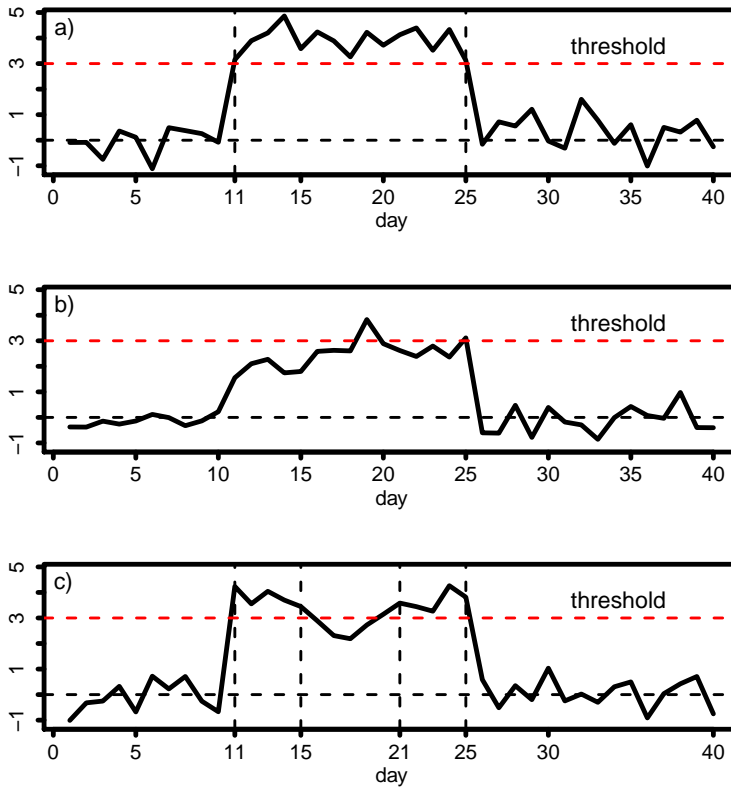


Figure 2. Schematical illustration of our approach (temperature anomaly on the y axis): **(a)** model detects correctly one heat period above the threshold, **(b)** model underestimates the number of heat periods, **(c)** model overestimates the number of heat periods (details see text).

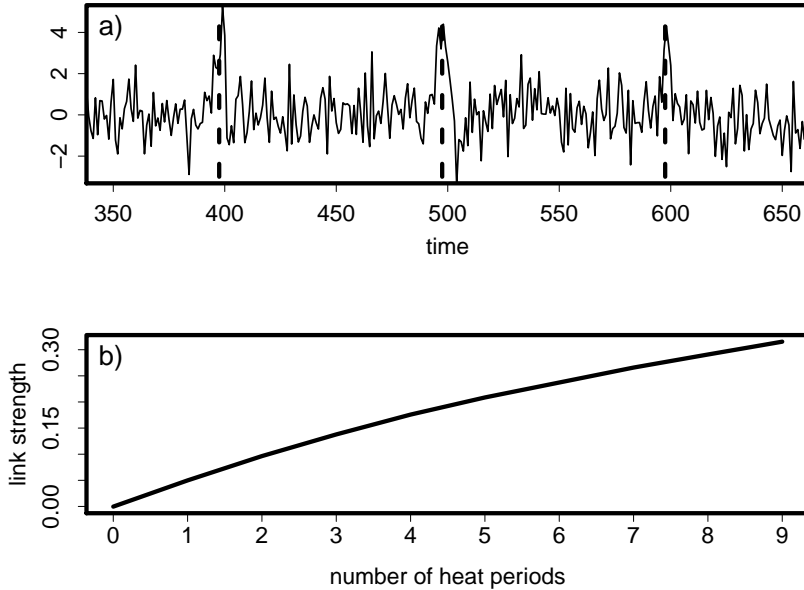


Figure 3. (a) Artificial time series including 3 heat periods (dashed lines). (b) Relation between the network link strength and the number of heat periods, based on 100 artificial time series.

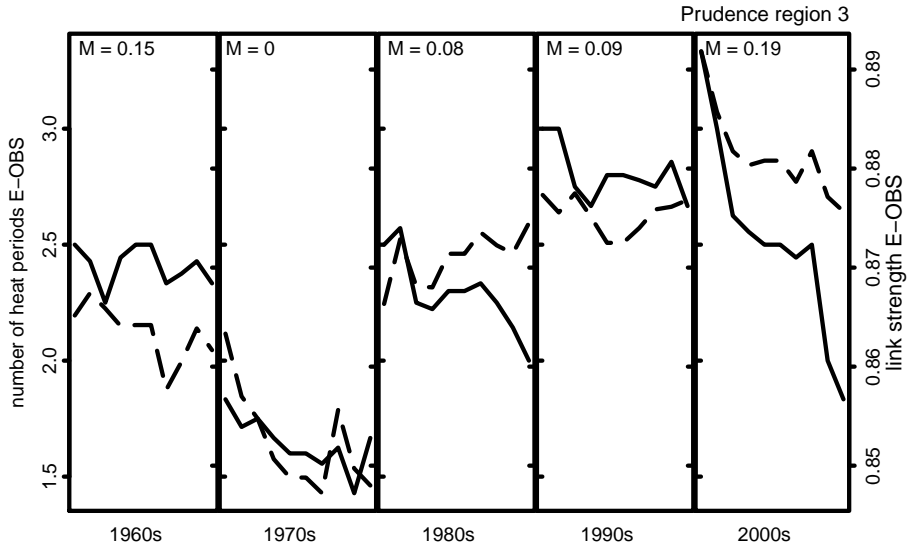


Figure 4. Number of heat periods (1961–2010) in France (Prudence 3) in summer from E-OBS [data](#) (solid line) and corresponding E-OBS link strength W (dashed line). [The “M’s” denote the absolute mean difference within a decade between E-OBS and the CCLM ensemble mean after normalization, see Eq. 7.](#)

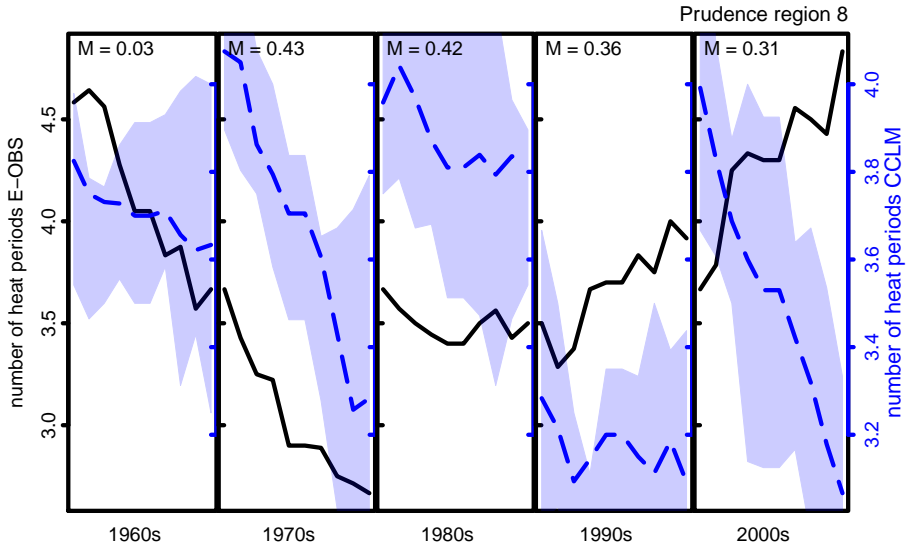


Figure 5. Number of heat periods (1961-2010) in [Scandinavia-Eastern Europe \(Prudence 8\)](#) in summer from E-OBS [\(black\)](#) and CCLM number of heat periods (blue: ensemble mean and interquartile range). The “M’s” denote the absolute mean difference within a decade between E-OBS and the CCLM ensemble mean after normalization, [see Eq. 6](#).

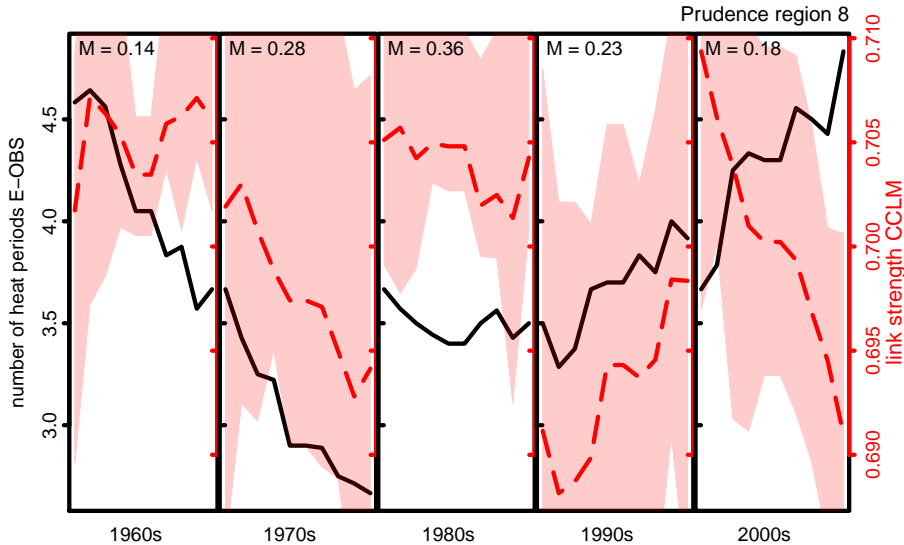


Figure 6. Number of heat periods (1961-2010) in [Scandinavia-Eastern Europe \(Prudence 8\)](#) in summer from E-OBS q (black) and CCLM link strength or correlation threshold W (red: ensemble mean and interquartile range). The “M’s” denote the absolute mean difference within a decade between E-OBS and the CCLM ensemble mean after normalization, [see Eq. 7](#).

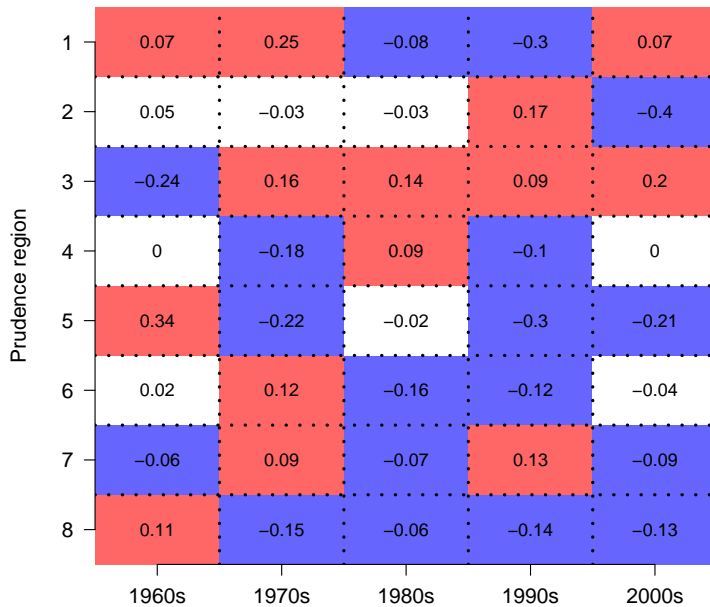


Figure 7. Rank matrix of the performance of the two methods. Blue: network approach performs better, red: standard approach performs better, white: tie.