



Identification of magnetic anomalies based on multifractal modeling

E. Mansouri et al.

This discussion paper is/has been under review for the journal Nonlinear Processes in Geophysics (NPG). Please refer to the corresponding final paper in NPG if available.

Identification of magnetic anomalies based on ground magnetic data analysis using multifractal modeling: a case study in Qoja-Kandi, East Azerbaijan Province, Iran

E. Mansouri¹, F. Feizi², and A. A. Karbalaei Ramezani¹

¹Young Researchers and Elite Club, South Tehran Branch, Islamic Azad University, Tehran, Iran

²Mine Engineering Department, South Tehran Branch, Islamic Azad University, Tehran, Iran

Received: 10 May 2015 – Accepted: 23 June 2015 – Published: 24 July 2015

Correspondence to: F. Feizi (feizi.faranak@yahoo.com)

Published by Copernicus Publications on behalf of the European Geosciences Union & the American Geophysical Union.

Title Page

Abstract

Introduction

Conclusions

References

Tables

Figures



Back

Close

Full Screen / Esc

Printer-friendly Version

Interactive Discussion



Identification of magnetic anomalies based on multifractal modeling

E. Mansouri et al.

Title Page

Abstract

Introduction

Conclusions

References

Tables

Figures



Back

Close

Full Screen / Esc

Printer-friendly Version

Interactive Discussion



a map can provide additional details about the specification of underground magnetic anomalies especially exact location. Magnetic anomaly depends on the inclination and declination of the body's magnetization generally. Therefore, according to this point and the orientation of the magnetic body with respect to magnetic north; Baranov (1957) and Baranov and Naudy (1964) proposed a mathematical approach known as reduction-to-the-pole (RTP) for simplifying anomaly shape and determining anomaly exact location. As a result of increasing the resolution of RTP technique, concentration-area (C-A) fractal method was applied. Fractal geometry is a Non-Euclidean geometry established by Mandelbrot (1983) and has been applied in geosciences and mineral exploration, especially in geophysical and geochemical exploration since 1980s, e.g. Turcotte (1989), Bolviken et al. (1992), Korvin (1992), Cheng et al. (1994), Agterberg et al. (1996), Cheng (1999), Turcotte (2004), Dimri (2005) and Shen et al. (2009).

In this study, concentration-area (C-A) fractal method was used to gridded RTP data set, for better classification of RTP map which generated from RTP technique. This procedure was applied to the ground magnetic data of Qoja-Kandi, Zanjan Province, Iran.

2 The concentration-area fractal method

The concentration-area (C-A) method serves to illustrate the relationship correlated between the obtained results. Its most useful features are the easy implementation and the ability to compute quantitative anomalous thresholds (Cheng et al., 1994).

Cheng et al. (1994) proposed the concentration-area (C-A) method for separating geochemical anomalies from background in order to characterize the distribution of elemental concentrations. Equation (1) shows the general form of this model.

$$A(\rho \leq \nu) \propto \rho^{-a_1}; \quad A(\rho \geq \nu) \propto \rho^{-a_2}, \quad (1)$$

where $A(\rho)$ denotes the area with concentration values greater than the contour value ρ ; ν represents the threshold; and a_1 and a_2 are characteristic exponents. The breaks

Identification of magnetic anomalies based on multifractal modeling

E. Mansouri et al.

Title Page

Abstract

Introduction

Conclusions

References

Tables

Figures



Back

Close

Full Screen / Esc

Printer-friendly Version

Interactive Discussion



between straight line segments in C-A log–log plot and the corresponding values of ρ are known as thresholds to separate geophysical values into different components representing different causal factors such as, lithological differences, geochemical processes and mineralizing events (Lima et al., 2003). Thus, applying C-A fractal model to the geochemical data, improves resolution of the data helping to explore the deposits. It seems that, applying this model to ground magnetic data improves the accuracy of magnetite deposit exploration. The most useful feature of the C-A method is its capability to compute anomaly thresholds (Goncalves et al., 2001). Using fractal theory, Cheng et al. (1994) derived similar power–law relationships and equations in extended form. The area $A(\rho)$ for a given ρ is equal to the number of cells multiplied by cell area with concentration values greater than ρ . Average concentration values are used for those boxes containing more than one sample. Area-concentration [$A(\rho)$] with element concentrations greater than ρ usually shows a power–law relation (Cheng et al., 1994). The study area and geological setting.

The Qoja-Kandi area is located within the Orumieh-Dokhtar magmatic arc in northwest of Iran (Fig. 1). This magmatic arc is the most important for metals, and hosts the majority of the larger metals deposits such as copper and iron (Hassan-Nezhad and Moore, 2006) The investigated area characterized by Precambrian to Jurassic units and Oligo-Miocene volcanic rocks. Different types of metal ore deposits, such as iron have already been documented near studied area. The lithology of this part includes schist and shale (Kahar formation), dolomite and limestone (Elika formation), shale, sandstone and limestone (Shemshak formation), limestone, marl, sandstone, conglomerate and andesite. A magnetite dyke which has outcrops in andesite units has already been seen near studied area. It seems that this magnetite dyke presence in Qoja-Kandi area.

3 Ground magnetic data analysis

Ground magnetic data are acquired in the region at 15 m spacing along lines in the north direction and spaced 10 m apart. 6997 geophysical ground data were collected by GSM-19T proton.

3.1 The TMI anomaly map

The Total-Magnetic-Intensity (TMI) map of the Qoja-Kandi area was obtained to delineate the subsurface anomaly. Figure 2 indicates TMI with ground magnetic data points. The ground magnetic anomalies range from 38 633 to 69 509 nT and are characterized by both low and high frequencies of anomalies. The map reveals that dipolar (anomalies having positive and negative components) magnetic anomalies have a general E–W direction, which is in the center and north of studied area. There are three obvious dipolar magnetic anomalies (two anomalies in the east and west of the center and one anomaly in the north) in the Qoja-Kandi prospecting area which are expected to depend on two magnetite dyke in andesite units.

3.2 Reduction to the pole technique

An interpretation difficulty with TMI anomalies is that they are dipolar (anomalies having positive and negative components) such that the shape and phase of the anomaly depends in part on the magnetic inclination and the presence of any remanent magnetization. Because of depending magnetic anomaly on the inclination and declination of the body's magnetization, the inclination and declination of the local earth's magnetic field, and the orientation of the body with respect to magnetic north, Baranov (1957) and Baranov and Nudy (1964) proposed a mathematical approach known as reduction to the pole for simplifying anomaly shape.

The reduction-to-the-pole (RTP) technique transforms TMI anomalies to anomalies that would be measured if the field were vertical (assuming there is only an inducing

Identification of magnetic anomalies based on multifractal modeling

E. Mansouri et al.

Title Page

Abstract

Introduction

Conclusions

References

Tables

Figures



Back

Close

Full Screen / Esc

Printer-friendly Version

Interactive Discussion



Identification of magnetic anomalies based on multifractal modeling

E. Mansouri et al.

Title Page

Abstract

Introduction

Conclusions

References

Tables

Figures



Back

Close

Full Screen / Esc

Printer-friendly Version

Interactive Discussion



field). This RTP transformation makes the shape of magnetic anomalies more closely related to the spatial location of the source structure and makes the magnetic anomaly easier to interpret, as anomaly maxima will be located centrally over the body (provided there is no remanent magnetization present). Thus, the RTP reduces the effect of the Earth's ambient magnetic field and provides a more accurate determination of the position of anomalous sources. It is therefore understood that the total magnetization direction is equivalent to that of the current inducing field.

Before applying the methods, the total field anomaly data were converted to RTP using a magnetic inclination of 55.43° and a declination of 4.93° . RTP anomalies, shows three obvious magnetic anomalies (two anomalies in the east and west of the south and one anomaly in the north) in the studied area, elongated in approximate E–W direction. The highest class of RTP-Magnetic-Anomalies (RTP-MA) based on reduction-to-the-pole technique is $> 55\,370.7$ nT with $24\,941.79$ m² area. Also, RTP anomalies was classified to different populations based on this method, as illustrated in Fig. 3. Based on this method, drilling points determination with RTP technique was complicated.

3.3 Application of C-A modeling on the RTP-MA

Multifractal models are utilized to quantify patterns such as geophysical data. Fractal and multifractal modeling are widely applied to distinguish the different mineralized zones (Cheng, 2007). Multifractal theory could be interpreted as a theoretical framework that explains the power law relationships between areas enclosing concentrations below a given threshold value and the actual concentrations itself. To demonstrate and prove that data distribution has a multifractal nature, an extensive computation is required (Halsey et al., 1986; Evertz and Mandelbrot, 1992). This method has several constrains especially when the boundary effects on irregular geometrical data sets are involved (Agterberg et al., 1996; Goncalves, 2001; Cheng, 2007; Xie et al., 2010). Multifractal modelings in geophysical and geochemical exploration help to find exploration targets and mineralization potentials in different types of deposits (Yao and Cheng, 2011). The C-A method seems to be equally

Identification of magnetic anomalies based on multifractal modeling

E. Mansouri et al.

Title Page

Abstract

Introduction

Conclusions

References

Tables

Figures

⏪

⏩

◀

▶

Back

Close

Full Screen / Esc

Printer-friendly Version

Interactive Discussion



applicable to all cases which means that geophysical distributions mostly satisfy the properties of a multifractal function. There is some evidence that geophysical and geochemical data distributions have fractal behavior in nature, e.g. Bolviken et al. (1992), Turcotte (1997), Goncalves (2001), Gettings (2005) and Li and Cheng (2006). This theory improves the development of an alternative interpretation validation and useful methods to be applied to geophysical distributions analysis.

In this study, 57 307 transformed RTP data were processed for identification of magnetic anomalies. Statistical results reveal that RTP-MA mean value is 48 441 nT, as depicted in Fig. 4, and the RTP-MA domain shows a wide range. RTP-MA distribution map was generated with minimum curvature method. The estimated RTP-MA model in terms of RTP data values was intended to build of the C-A log–log plot for RTP-MA. Based on linear segments and breakpoints log–log plot, as shown in Fig. 5, geophysical population were divided. RTP threshold values are 45 383, 47 424.2, 49 493.7, 56 493.7 and 635 331.1 which are very low, low, moderate, high and very high intensity anomaly threshold values, respectively, as illustrated in Table 1. These geophysical populations were determined based on the breakpoints in log–log plot. Actuaaly the length of the tangent, demonstrate the extents of geophysical populations in fractal model. It is mentioned that the number of population in fractal model could be more or less than five, but actually the extent of the last class population is not highly dependent on the number of population in fractal model. Hence, there are five populations for RTP-MA which illustrate that fifth class of RTP-MA based on fractal method is $> 63\,533.1$ nT with very high priority for drilling. Consequently, the locations of RTP-MA (two anomalies) based on fractal method are situated in the east of southern part of the area, as depicted in Fig. 6.

4 Control with borehole data

A method of investigating subsurface geology is, of course, drilling boreholes. For a more accurate results about identification of magnetic anomalies, the results of C-

Identification of magnetic anomalies based on multifractal modeling

E. Mansouri et al.

Title Page

Abstract

Introduction

Conclusions

References

Tables

Figures



Back

Close

Full Screen / Esc

Printer-friendly Version

Interactive Discussion



A Modeling on the RTP-MA are compared with borehole data (Table 2). There are 8 drilled boreholes in this area that are used for identification of magnetic anomalies obtained from boreholes (Fig. 7). The drilled boreholes were analyzed and studied by geologists. Hence, range of magnetite ores in each borehole were obtained and documented as log report in Table 2. The accepted lower limit for the ore length, is the grade 20 % Fe total.

RTP transformed data based on ground magnetic anomaly data collected from C-A moderate anomalies in Qoja-Kandi prospecting area show magnetic susceptibility concentration between 63533.1 and 66296 nT with 1957.64 m² area. This study shows that the areas with very high priority obtained by C-A method have magnetite concentration with appropriate thickness. This point is significant that borehole 1 and 2 were drilled in mentioned places and confirmed the results of C-A model (Fig. 8) for increasing the resolution of drilling point determination and decreasing the drilling risk. Figure 8 shows 3-D RTP map of Qoja-Kandi based on C-A method with pictures from magnetite zones in the surface of drilled borehole 1 and 2, in addition of mentioned boreholes log plots. It is necessary to mention that, the TERRA satellite has a back-looking telescope with a resolution of 15 m in the VNIR that matches with the wavelength of the band 3 that is used to extract 3-D information for provided Fig. 8.

The results confirmed there is affirmative correlation between anomalies derived via C-A method and log report of boreholes. Furthermore, the ratio of the ore length and total core length is calculated in Table 2. The number of this ratio is between ranges of 0–1. Whatever this number is larger and close to 1, the resolution of the drilling point determination increase and the drilling risk decrease. The results shows positive correlation between the ratio of the ore and total core column, and Priority areas for drilling column. Based on this study, anomalies associated with andesite units host iron mineralization. Also, there isn't any mineralization in other geological units such as limestones and conglomerates in northwest of the studied area. It should be noted that, magnetite ores have outcrops in andesite units (Fig. 8).

5 Conclusions

Separation of magnetic anomalies using combine of RTP technique and C-A fractal modelling has been used in Qoja-Kandi prospecting area as a new geophysical method for increasing the resolution of the drilling points determination. This study demonstrates that C-A method utilizing for ground magnetic anomaly separation is an appropriate manner for geophysical prospecting.

There was a multifractal model for RTP-MA, based on log-log plots in the prospecting area. In this paper, RTP anomalies results from C-A method and RTP technique were compared. Anomalies resulting from RTP technique show huge anomalies in three parts, but C-A method show two small anomalies. RTP anomalies based on RTP technique are similar to anomalies from C-A method because of normal distribution in Qoja-kandi area. According to correlation between geological particulars and RTP anomalies obtained from C-A method, andesite units host the anomalies in the studied area.

There is an appropriate correlation between the calculated anomalous threshold values and ore thicknesses in total cores. Also, the ratio of the ore length and total core length is related to anomalous threshold, calculated with C-A method. Based on RTP technique, three anomalies (two RTP anomalies were identified in the east and west of the southern part of the area and one anomaly in the northern part). Also, according to the C-A method, two small anomalies are situated in the east of southern part of the prospecting area with very high priority for drilling. Borehole 1 and 2 were drilled in mentioned places and confirmed the results of C-A model for increasing the resolution of drilling point determination and decreasing the drilling risk.

Hence study geophysical magnetic anomalies with the C-A method can be a proper way for geophysicists to find targets with enriched magnetic elements. Also, applying C-A log-log can increase the resolution of the drilling point determination and decrease the drilling risk.

Identification of magnetic anomalies based on multifractal modeling

E. Mansouri et al.

Title Page

Abstract

Introduction

Conclusions

References

Tables

Figures



Back

Close

Full Screen / Esc

Printer-friendly Version

Interactive Discussion



References

- Abedi, M., Torabi, S. A., and Norouzi, G. H.: Application of fuzzy AHP method to integrate geophysical data in a prospect scale, a case study: seridune copper deposit, *B. Geofis. Teor. Appl.*, 54, 145–164, 2013.
- 5 Agterberg, F. P., Cheng, Q., Brown, A., and Good, D.: Multifractal modeling of fractures in the Lac du Bonnet batholith, Manitoba, *Comput. Geosci.*, 22, 497–507, 1996.
- Arian, M.: Physiographic-tectonic zoning of Iran's sedimentary basins, *Open Journal of Geology*, 3, 169–177, 2013.
- Baranov, V.: A new method for interpretation of aeromagnetic maps; pseudo-gravimetric anomalies, *Geophysics*, 22, 359–382, 1957.
- 10 Baranov, V. and Naudy, H.: Numerical calculation of the formula of reduction to the magnetic pole, *Geophysics*, 29, 67–79, 1964.
- Bolviken, B., Stokke, P. R., Feder, J., and Jossang, T.: The fractal nature of geochemical landscapes, *J. Geochem. Explor.*, 43, 91–109, 1992.
- 15 Cheng, Q.: Spatial and scaling modelling for geochemical anomaly separation, *J. Geochem. Explor.*, 65, 175–194, 1999.
- Cheng, Q.: Multifractal imaging filtering and decomposition methods in space, Fourier frequency, and eigen domains, *Nonlin. Processes Geophys.*, 14, 293–303, doi:10.5194/npg-14-293-2007, 2007.
- 20 Cheng, Q., Agterberg, F. P., and Ballantyne, S. B.: The separation of geochemical anomalies from background by fractal methods, *J. Geochem. Explor.*, 51, 109–130, 1994.
- Dimri, V. P.: *Fractal Behavior of the Earth System*, Springer, The Netherlands, 208 pp., 2005.
- Evertz, C. J. G. and Mandelbrot, B. B.: Multifractal measures (appendix B), in: *Chaos and Fractals*, edited by: Peitgen, H.-O., Jurgens, H., and Saupe, D., Springer, New York, 534–546, 1992.
- 25 Gettings, M. E.: Multifractal magnetic susceptibility distribution models of hydrothermally altered rocks in the Needle Creek Igneous Center of the Absaroka Mountains, Wyoming, *Nonlin. Processes Geophys.*, 12, 587–601, doi:10.5194/npg-12-587-2005, 2005.
- Goncalves, M. A., Mateus, A., and Oliveira, V.: Geochemical anomaly separation by multifractal modeling, *J. Geochem. Explor.*, 72, 91–114, 2001.
- 30

Identification of magnetic anomalies based on multifractal modeling

E. Mansouri et al.

Title Page

Abstract

Introduction

Conclusions

References

Tables

Figures



Back

Close

Full Screen / Esc

Printer-friendly Version

Interactive Discussion



Identification of magnetic anomalies based on multifractal modeling

E. Mansouri et al.

Title Page

Abstract

Introduction

Conclusions

References

Tables

Figures



Back

Close

Full Screen / Esc

Printer-friendly Version

Interactive Discussion



- Halsey, T. C., Jensen, M. H., Kadanoff, L. P., Procaccia, I., and Shraiman, B. I.: Fractal measures and their singularities: the characterization of strange sets, *Phys. Rev. A*, 33, 1141–1151, 1986.
- Hassan-Nezhad, A. A. and Moore, F.: A stable isotope and fluid inclusion study of the Qaleh-Zari Cu–Au–Ag deposit, Khorasan Province, Iran, *J. Asian Earth Sci.*, 27, 805–818, 2006.
- Korvin, G.: *Fractal Models in the Earth Science*, Elsevier, Amsterdam, 396 pp., 1992.
- Li, Q. and Cheng, Q.: VisualAnomaly: a GIS-based multifractal method for geochemical and geophysical anomaly separation in Walsh domain, *Comput. Geosci.*, 32, 663–672, 2006.
- Lima, A., De Vivo, B., Cicchella, D., Cortini, M., and Albanese, S.: Multifractal ID winterpolation and fractal filtering method in environmental studies: an application on regional stream sediments of (Italy), Campania region, *Appl. Geochem.*, 18, 1853–1865, 2003.
- Mandelbrot, B. B.: *The Fractal Geometry of Nature*, W. H. Freeman, San Fransisco, 468 pp., 1983.
- Shen, W., Fang, C., and Zhang, D.: Fractal and chaos research of geomagnetic polarity reversal, *Earth Sci. Front.*, 16, 201–206, 2009.
- Turcotte, D. L.: Fractals in geology and geophysics, *Pure Appl. Geophys.*, 131, 171–196, 1989.
- Turcotte, D. L.: *Fractals and Chaos in Geology and Geophysics*, Cambridge University Press, Cambridge, 398 pp., 1997.
- Turcotte, D. L.: The relationship of fractals in geophysics to “the new science”, *Chaos Soliton. Fract.*, 19, 255–258, 2004.
- Xie, S., Cheng, Q., Zhang, S., and Huang, K.: Assessing microstructures of pyrrhotites in basalts by multifractal analysis, *Nonlin. Processes Geophys.*, 17, 319–327, doi:10.5194/npg-17-319-2010, 2010.
- Yao, L. and Cheng, Q.: Multi-scale interactions of geological processes during mineralization: cascade dynamics model and multifractal simulation, *Nonlin. Processes Geophys.*, 18, 161–170, doi:10.5194/npg-18-161-2011, 2011.

Identification of magnetic anomalies based on multifractal modeling

E. Mansouri et al.

Title Page

Abstract

Introduction

Conclusions

References

Tables

Figures



Back

Close

Full Screen / Esc

Printer-friendly Version

Interactive Discussion



Table 1. RTP classification of magnetic anomalies based on fractal method.

Class ID	Classes range (nT)	Priority areas for drilling
1	45 383–47 424.2	Very low
2	47 424.2–49 493.7	Low
3	49 493.7–56 493.7	Moderate
4	56 493.7–63 533.1	High
5	63 533.1–66 296	Very high

Identification of magnetic anomalies based on multifractal modeling

E. Mansouri et al.

Title Page

Abstract

Introduction

Conclusions

References

Tables

Figures



Back

Close

Full Screen / Esc

Printer-friendly Version

Interactive Discussion



Table 2. Log report of boreholes with RTP classification based on fractal method.

Borehole ID	Total core (m)	Magnetite thickness (m) in total core (grades greater than 20 % Fe total)	Ore/total core	Magnetite range (m)		Priority areas for drilling
				From	To	
BH1	136.5	52.4	0.38	19.3 60.7 109.4	25.2 85.2 131.4	Very high
BH2	171.2	47.2	0.27	4 50.2 130.6	12.2 53.5 166.3	Very high
BH3	151.2	32	0.21	80 112	102 122	High
BH4	106	12.5	0.11	44 81	48 89.5	Moderate
BH5	58.9	0	0	–	–	Very low
BH6	136.5	3	0.02	69	72	Low
BH7	172	14	0.08	44 61.5 156	47 63.5 164	Moderate
BH8	157	29	0.18	70 133	90 142	High

Identification of magnetic anomalies based on multifractal modeling

E. Mansouri et al.

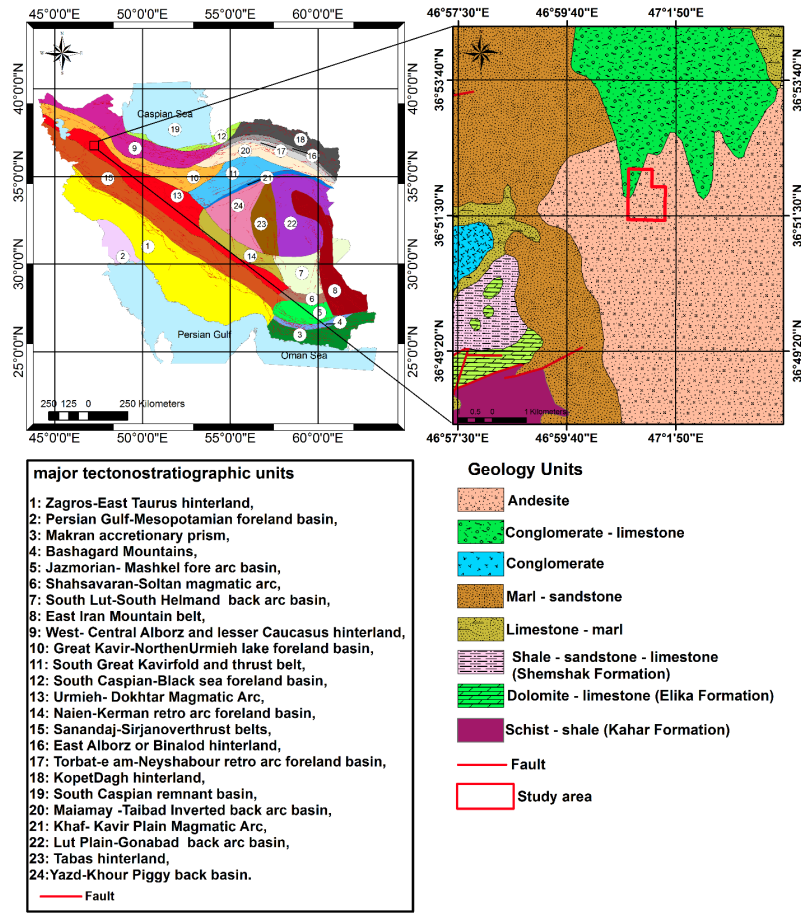


Figure 1. Physiographic-tectonic zoning map of Iran's sedimentary basins (Arian, 2013) and location of study area.

Title Page

Abstract Introduction

Conclusions References

Tables Figures

◀ ▶

◀ ▶

Back Close

Full Screen / Esc

Printer-friendly Version

Interactive Discussion



Identification of magnetic anomalies based on multifractal modeling

E. Mansouri et al.

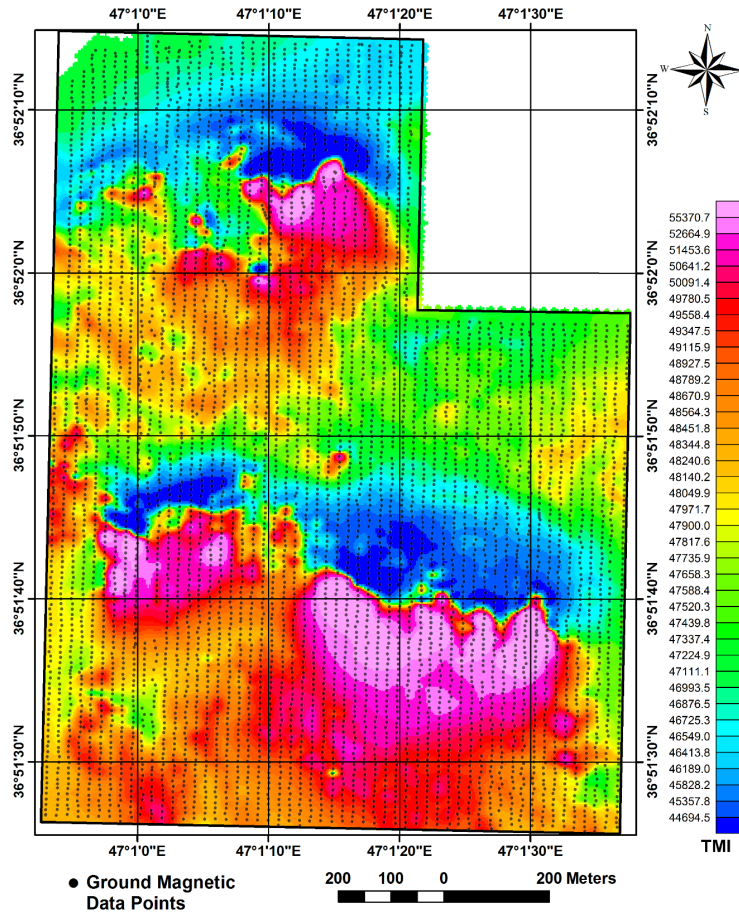


Figure 2. TMI map of Qoja-Kandi with ground magnetic data points.

Title Page

Abstract Introduction

Conclusions References

Tables Figures

◀ ▶

◀ ▶

Back Close

Full Screen / Esc

Printer-friendly Version

Interactive Discussion



Identification of magnetic anomalies based on multifractal modeling

E. Mansouri et al.

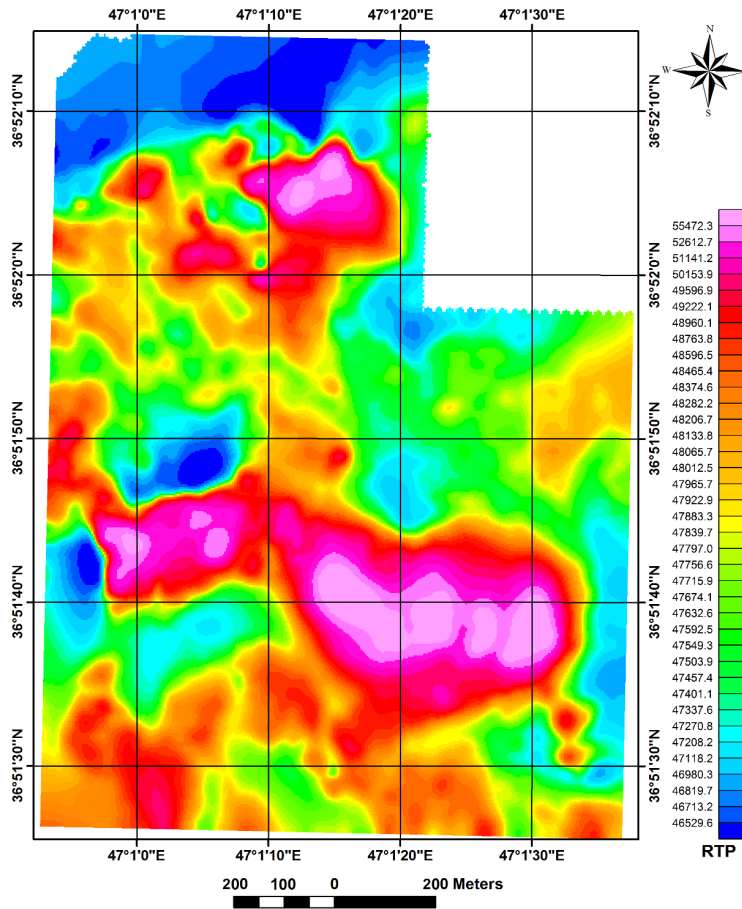


Figure 3. RTP map of Qoja-Kandi based on Reduction to the pole technique.

Title Page

Abstract

Introduction

Conclusions

References

Tables

Figures



Back

Close

Full Screen / Esc

Printer-friendly Version

Interactive Discussion



Identification of magnetic anomalies based on multifractal modeling

E. Mansouri et al.

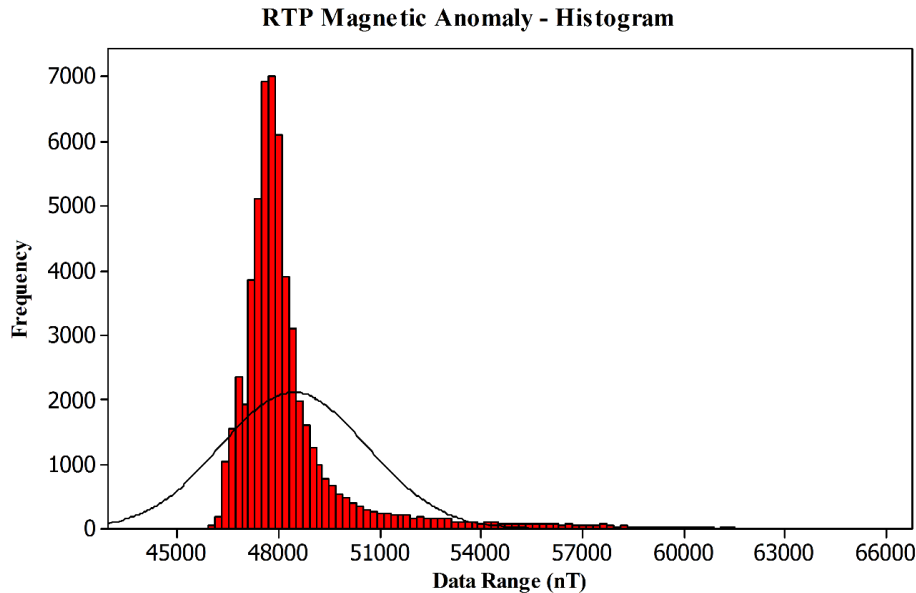


Figure 4. Histogram of RTP-MA data in Qoja-Kandi.

Title Page

Abstract	Introduction
Conclusions	References
Tables	Figures

⏪
⏩

◀
▶

Back
Close

Full Screen / Esc

Printer-friendly Version

Interactive Discussion



Identification of magnetic anomalies based on multifractal modeling

E. Mansouri et al.

Title Page

Abstract

Introduction

Conclusions

References

Tables

Figures



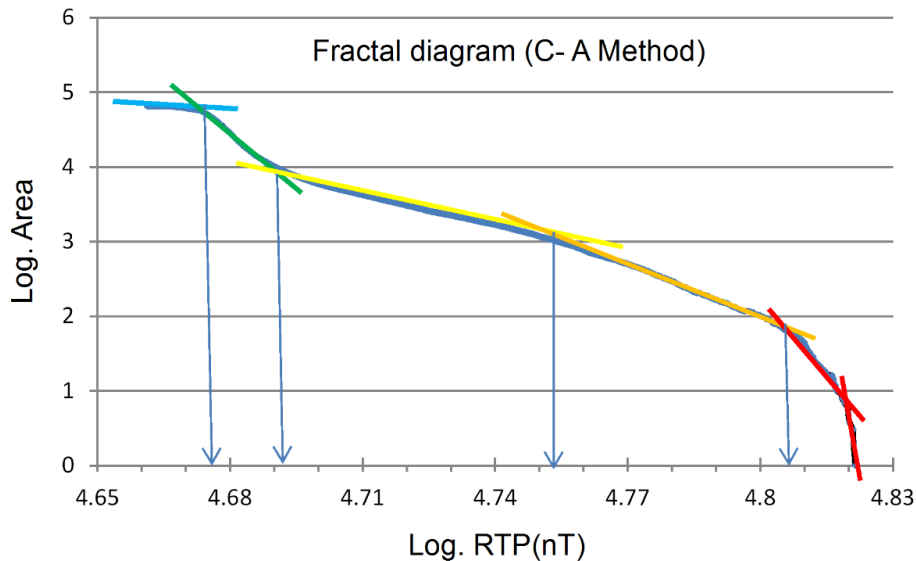
Back

Close

Full Screen / Esc

Printer-friendly Version

Interactive Discussion

**Figure 5.** Log–log plot for RTP-MA data in Qoja-Kandi.

Identification of magnetic anomalies based on multifractal modeling

E. Mansouri et al.

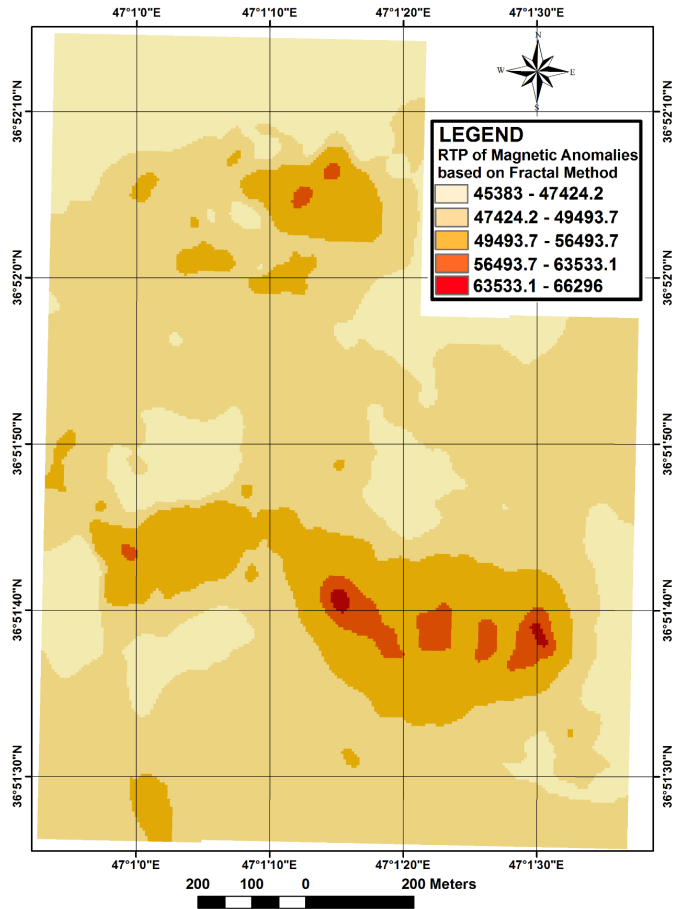


Figure 6. RTP map of Qoja-Kandi based on C-A method.

Title Page

Abstract

Introduction

Conclusions

References

Tables

Figures

⏪

⏩

◀

▶

Back

Close

Full Screen / Esc

Printer-friendly Version

Interactive Discussion



Identification of magnetic anomalies based on multifractal modeling

E. Mansouri et al.

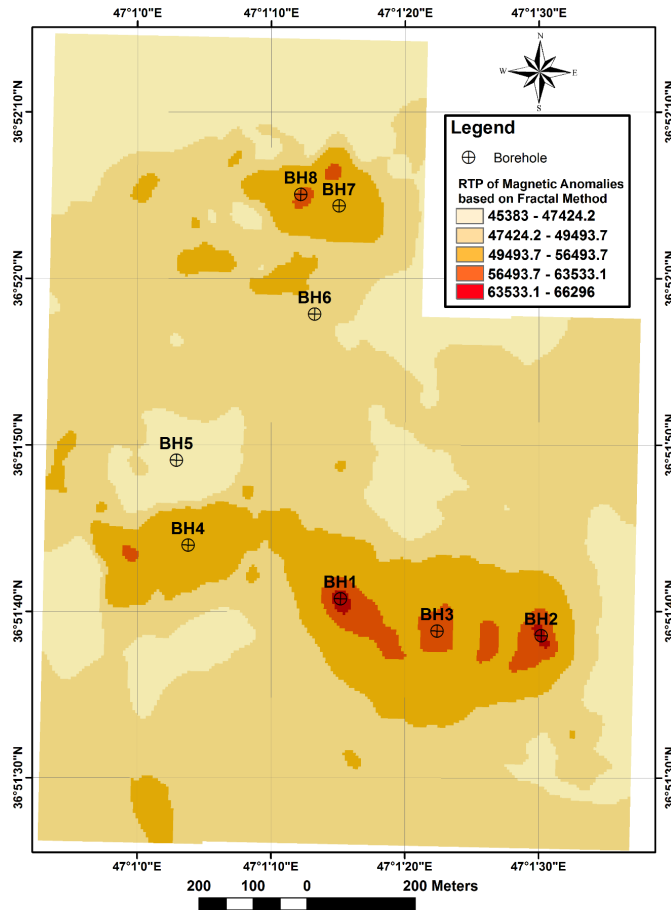


Figure 7. RTP map of Qoja-Kandi based on C-A method with drilled boreholes.

Title Page

Abstract Introduction

Conclusions References

Tables Figures

⏪ ⏩

◀ ▶

Back Close

Full Screen / Esc

Printer-friendly Version

Interactive Discussion



Identification of magnetic anomalies based on multifractal modeling

E. Mansouri et al.

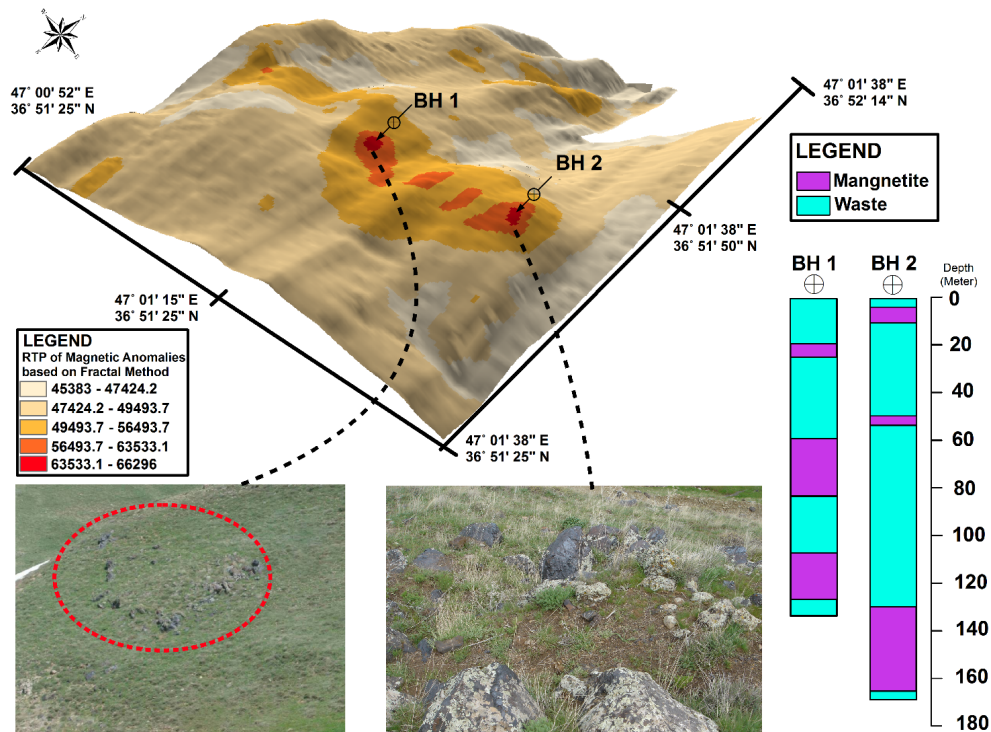


Figure 8. 3-D RTP map of Qoja-Kandi based on C-A method with pictures from magnetite zones in the surface of drilled borehole 1 and 2, in addition of mentioned boreholes log plots.

Title Page

Abstract Introduction

Conclusions References

Tables Figures

◀ ▶

◀ ▶

Back Close

Full Screen / Esc

Printer-friendly Version

Interactive Discussion

