

Interactive  
Comment

# ***Interactive comment on “Temperature distribution and Hadley circulation in an axisymmetric model” by N. Tartaglione***

**N. Tartaglione**

nazario.tartaglione@unicam.it

Received and published: 6 November 2014

I became aware that in the published paper Figures 9 and 12 have the lower and upper panels inverted. Moreover in Fig. 12 the caption c and d are missing. Sorry for that, it was completely my responsibility. I attach the correct figures.

---

Interactive comment on Nonlin. Processes Geophys. Discuss., 1, 1621, 2014.

Full Screen / Esc

Printer-friendly Version

Interactive Discussion

Discussion Paper

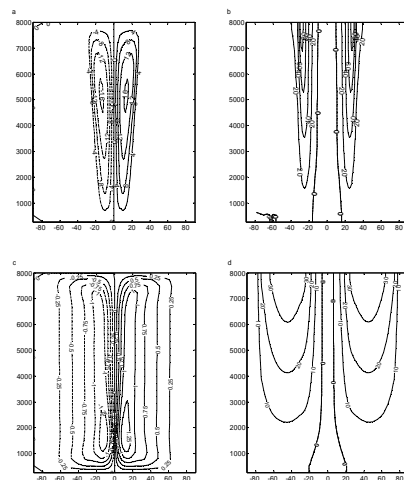


Figure 9. Annually averaged non-dimensional stream function (a and c) and zonal wind speed (b and d) for the steady cases  $n=0.5, k=0.5$  (upper panels) and  $n=3, k=3$  (lower panels).

Fig. 1. Figure 9

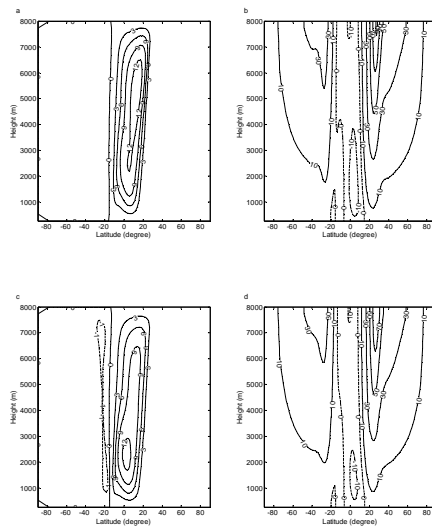


Figure 12. Winter circulation, non-dimensional stream function (a and c) and zonal wind speed (b and d) when  $n=2$ ,  $k=0.5$  (upper panels) and  $n=2$ ,  $k=3$  (lower panels) for the time-dependent simulation.

Fig. 2. Figure 12