

Interactive comment on “Temperature distribution and Hadley circulation in an axisymmetric model” by N. Tartaglione

N. Tartaglione

nazario.tartaglione@unicam.it

Received and published: 6 November 2014

I became aware that in the published paper Figures 9 and 12 have the lower and upper panels inverted. Moreover in Fig. 12 the caption c and d are missing. Sorry for that, it was completely my responsibility. I attach the correct figures.

Interactive comment on Nonlin. Processes Geophys. Discuss., 1, 1621, 2014.

C583

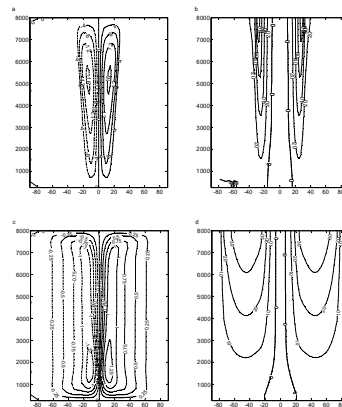


Figure 9. Annually averaged non-dimensional stream function (a and c) and zonal wind speed (b and d) for the steady cases $n=0.5, k=0.5$ (upper panels) and $n=3, k=3$ (lower panels).

Fig. 1. Figure 9

C584

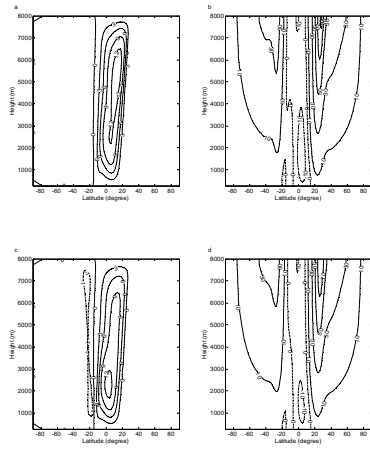


Figure 12. Winter circulation, non-dimensional stream function (a and c) and zonal wind speed (b and d) when $n=2, k=0.5$ (upper panels) and $n=2, k=3$ (lower panels) for the time-dependent simulation.

Fig. 2. Figure 12

C585