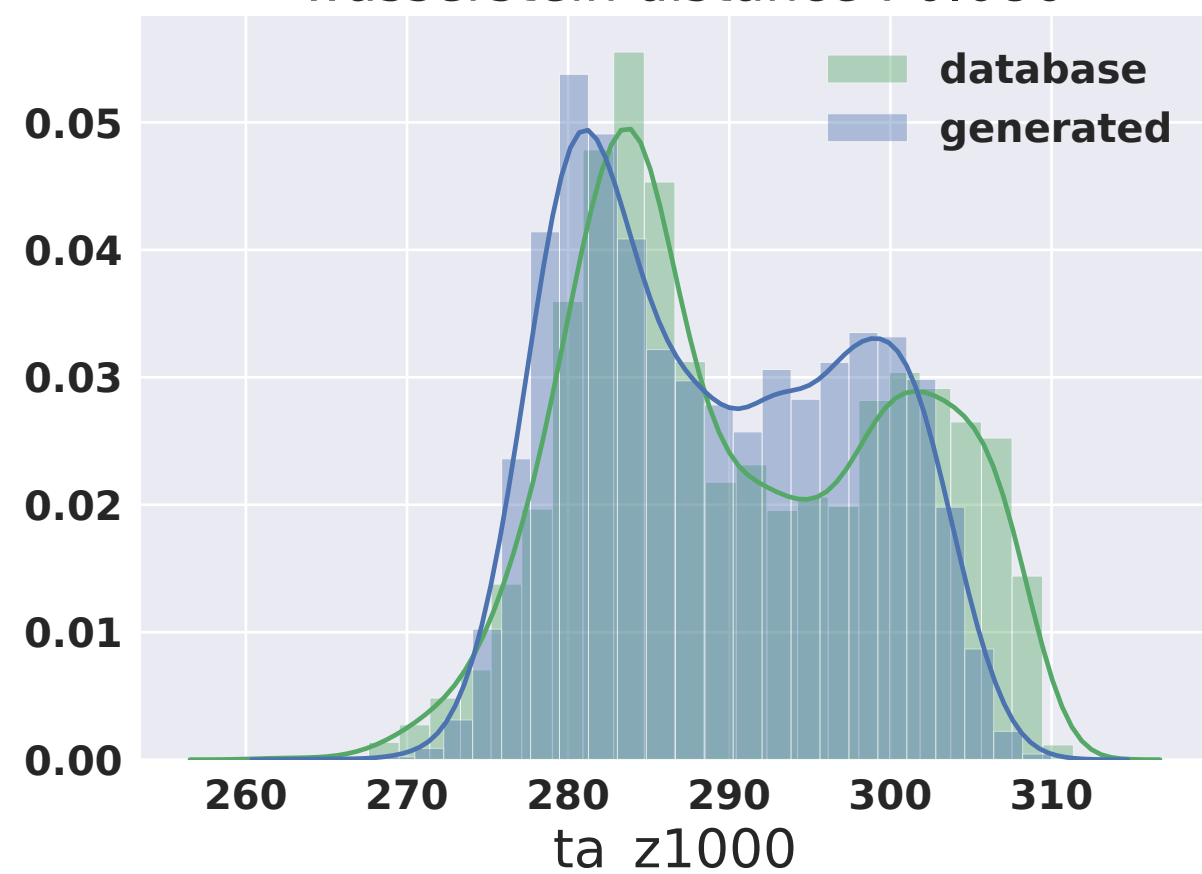


Temperature distribution at different pixels.

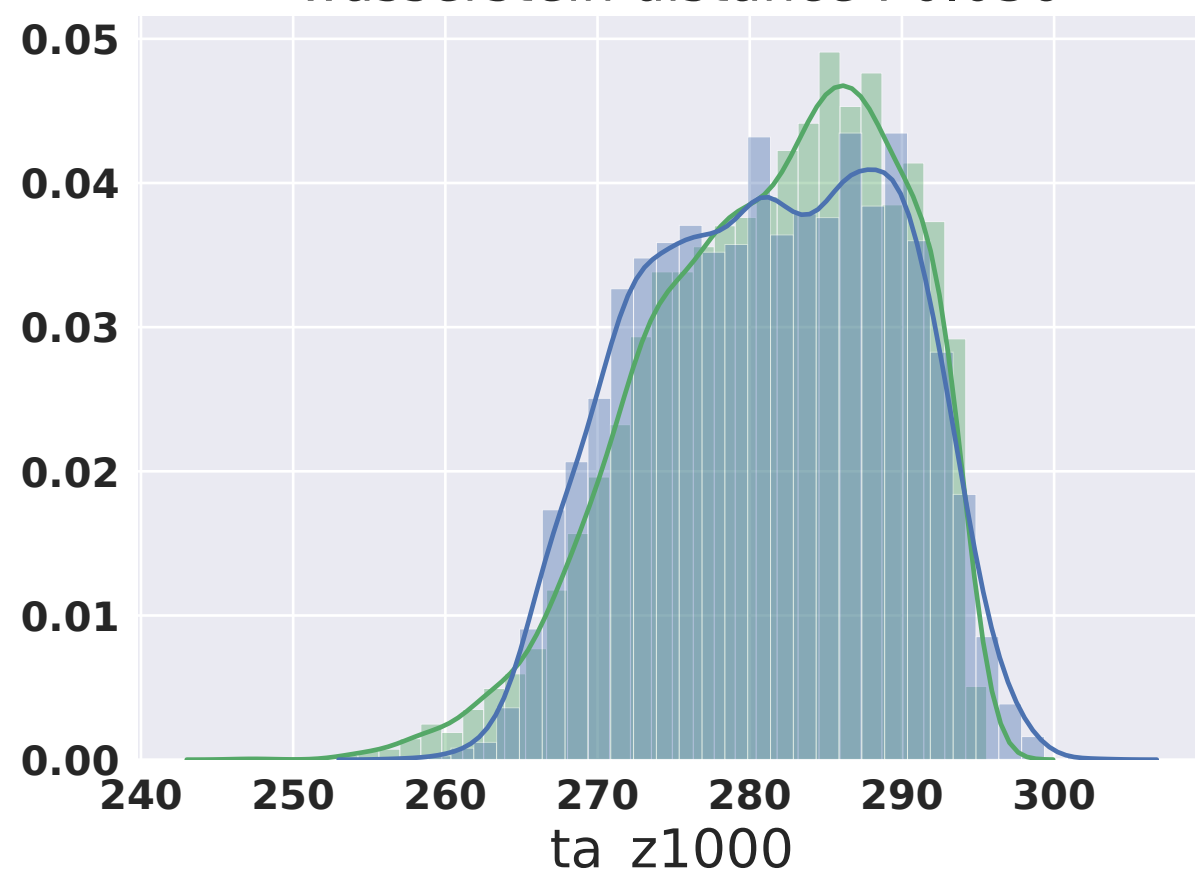
(a)

Marseille - France (42,5)
wasserstein distance : 0.086



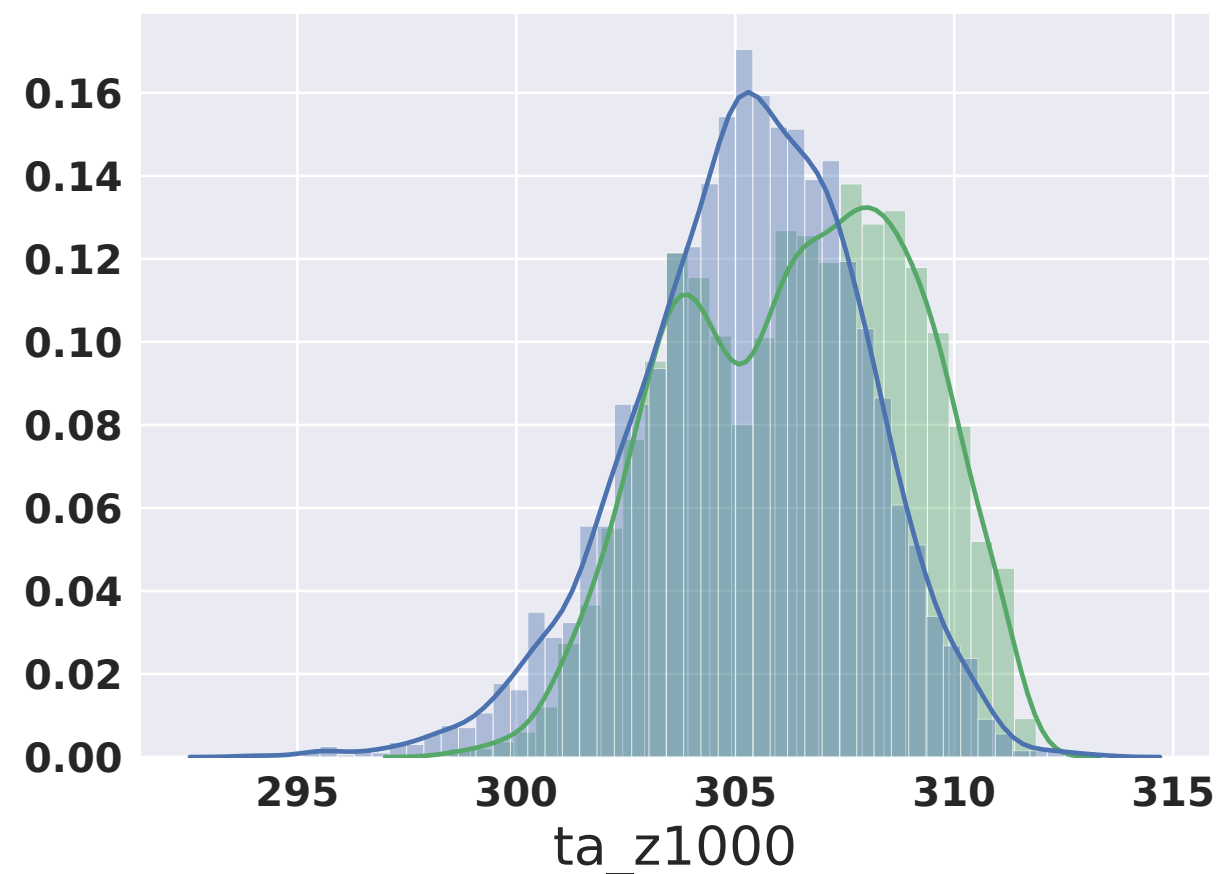
(b)

Boston - USA (42,-70)
wasserstein distance : 0.036



(c)

Brazil (-2,-70)
wasserstein distance : 0.056



(d)

South Argentina (-46,-70)
wasserstein distance : 0.089

