

Role of multifractal analysis in understanding the preparation zone for large size earthquake in the North-Western Himalaya region

S. S. Teotia and D. Kumar

Department of Geophysics, Kurukshetra University, Kurukshetra – 136 119, India

Received: 1 July 2010 – Revised: 25 December 2010 – Accepted: 27 January 2011 – Published: 15 February 2011

Abstract. Seismicity has power law in space, time and magnitude distributions and same is expressed by the fractal dimension D , Omori's exponent p and b -value. The spatio-temporal patterns of epicenters have heterogeneous characteristics. As the crust gets self-organised into critical state, the spatio-temporal clustering of epicenters emerges to heterogeneous nature of seismicity. To understand the heterogeneous characteristics of seismicity in a region, multifractal studies hold promise to characterise the dynamics of region. Multifractal study is done on seismicity data of the North-Western Himalaya region which mainly involve seismogenic region of 1905 Kangra great earthquake in the North-Western Himalaya region. The seismicity data obtained from USGS catalogue for time period 1973–2009 has been analysed for the region which includes the October 2005 Muzaffabad-Kashmir earthquake ($M_w = 7.6$). Significant changes have been observed in generalised dimension D_q , D_q spectra and b -value. The significant temporal changes in generalised dimension D_q , b -value and $D_q - q$ spectra prior to occurrence of Muzaffabad-Kashmir earthquake relates to distribution of epicenters in the region. The decrease in generalised dimension and b -value observed in our study show the relationship with the clustering of seismicity as is expected in self-organised criticality behaviour of earthquake occurrences. Such study may become important in understanding the preparation zone of large and great size earthquake in various tectonic regions.

1 Introduction

Fracture exhibits a fractal structure over a wide range of fracture scale, i.e. from the scales of micro fracture to mega faults (Aki, 1981; Allègre et al., 1982; Brown and Scholz, 1985; Turcotte, 1986a, b; Scholz and Aviles, 1986; Hirata, 1987). Recent studies have shown that many natural phenomena such as the spatial distribution of earthquakes (Telesca et al., 2003a, b, 2004), fluid turbulence are heterogeneous fractals (Mandelbrot, 1989). For heterogeneous fractals, a unique fractal dimension is not sufficient to characterise them and it differs by the method used to calculate it. Such fractal are called multifractals and they are characterised by generalised D_q or the $f(\alpha)$ spectrum (Hentschel and Procraccia, 1983; Halsey et al., 1986). A wide variety of heterogeneous phenomena such as diffusion – limited aggregation, dendritic crystallization, dielectric breakdown, various fingering and river-flow, are multifractals and multifractal analysis must be used to characterise those complex phenomena (Stanley and Meakin, 1988). If the spatio-temporal distribution of earthquakes is multifractal, the fractal property of earthquakes in different areas and different time spans must be compared using whole spectrum of D_q or $f(\alpha)$ (Hirabayashi et al., 1992). Several studies have been made to investigate the temporal variation of heterogeneity in seismicity using multifractal analysis in various seismic regions (Hirata and Imoto, 1991; Hirabayashi et al., 1992; Li et al., 1994; Dimitriu et al., 2000; Teotia et al., 1997; Telesca et al., 2005; Teotia and Kumar, 2007). Recently it has been recognised that the parameters which describe seismicity in a region show a spatial and temporal evolution which may be associated with the process of generation of large size/great size earthquakes i.e. evolving of fracture from micro fracture to mega fault (Telesca et al., 2003a, b). The change in seismicity pattern of earthquakes is reflected in generalised



Correspondence to: S. S. Teotia
(teotia_ss@rediffmail.com)

dimension D_q and D_q spectra of the seismicity. Therefore, the study of temporal variation D_q and D_q spectra may be used to study the changes in the seismicity structure before the occurrence of large earthquake, which may prove to be useful in understanding the preparation zone of large to great size earthquakes. Accordingly (Hirata and Imoto, 1991) have performed multifractal analysis of micro earthquake data of Kanto region using correlation integral method. Hirabayashi et al. (1992) have done multifractal analysis of seismicity in regions of Japan, California and Greece using various methods such as fixed mass and fixed radius methods. Li et al. (1994) have performed the multifractal analysis of spatial distribution of earthquakes of Tanshan region ($M_1 > 1.8$) using extended Grassberger-Procaccia method of dimension D_q estimation. Teotia et al. (1997), Teotia and Kumar (2007), Teotia (2000), Sunmonu et al. (2001) have studied the multifractal characteristics of seismicity of the Himalaya region and Sumatra region ($m_b \geq 4.5$). The 8 October 2005, Muzaffrabad-Kashmir earthquake ($M_w = 7.6$) killed more than 80 000 people and was the deadliest in the history of the Indian subcontinent. The earthquake occurred on a rupture plane 75 km long and 35 km wide with strike of 331° and a dip angle of 29° . The epicenter of the event was located north of Muzaffrabad (34.493° N and 73.629° E) in Kashmir Himalaya (USGS¹). The fractal nature of earthquake occurrence of the Northwest Himalayan region is also reported by Roy and Mandal (2009). However this study deals with the multifractal analysis of seismicity of region which resulted in Muzaffrabad-Kashmir earthquake of ($M_w = 7.6$) to understand the intrinsic nature of seismicity controlling multifractal characteristics i.e. generalised dimension D_q and D_q spectra in the region.

2 Methodology

For the analysis of seismicity of the North-Western Himalaya, the earthquake data set of USGS for the grid (36° N, 72° E), (30° N, 72° E), (28° N, 85° E), (35° N, 85° E) was analysed. The tectonic map along with grid is shown in Fig. 1. The most of the seismic activity is controlled by two lineaments i.e. Main Central Thrust (MCT) and Main Boundary Fault (MBF). The time window for analysis was chosen to be 1973–2009. To gain an unbiased and homogeneous data set, we restricted the USGS data by setting a lower limit of magnitude for period 1973–2009. The magnitude of completeness is shown in the frequency magnitude plot and it is found to be complete for magnitude threshold in $m_b \geq 4.5$ (see Fig. 2a). The distribution of earthquakes occurring in the selected region for time period (1973–2009) is shown in Fig. 2b.

The available methods for calculating D_q are the box counting method, the fixed-radius method and the fixed-mass method (Greenside et al., 1982; Grassberger et al., 1988; Baddi and Broggi, 1988). These methods work well provided the numbers of data points are very large. The extended Grassberger and Procaccia method (Grassberger and Procaccia, 1983) was used to calculate the generalised dimension D_q and D_q spectrum. This method has been applied by many authors on earthquake data of different regions for estimation of generalised dimension D_q even for small data points. It is described as:

$$\log C_q(r) = D_q \log(r) \quad (r \rightarrow 0) \quad (1)$$

$$C_q(r) = \lim_{r \rightarrow 0} \left[\frac{1}{N} \sum_{j=1}^N \left\{ \frac{1}{N} \sum_{\substack{i=1 \\ i \neq j}}^N H(r - |X_i - X_j|) \right\}^{q-1} \right]^{1/q-1} \quad (2)$$

where r is the scaling radius, N is the total number of data points within a search region in a certain time interval (also called the sample volume): X_i is the epicentral location (given in latitude and longitude) of the i -th event, X_j is the epicenter (given in latitude and longitude) of the j -th event, $C_q(r)$ is the q -th integral and $H(\cdot)$ is the Heaviside step function.

For estimating D_q spectra as a function of time, a time series of earthquake epicenters has to be formed and divided into subseries (subsets). Let set $\{X_i, M_i\}$, $i = 1, M$ be a complete set of earthquakes occurring in time period analysed, and M_i the magnitude of an earthquake occurring at time t_i . Thus the earthquake constitutes a time series of N elements. The time series consists of 902 events in the region. We consider this time series as the original data set for multifractal analysis of this region. In this study the original data set for the North-Western Himalaya is divided into 27 subsets (i.e. S1–S27). Each subset in the region consists of 100 events with an overlap 70 events. The shift of 30 events has been used in the analysis. The same number of events in each subset will avoid any non stationarity effect in data set. There is no limitation of number of events in the formation of subsets and shift used to move from one subset to another subset. For studying the spatio-temporal variation of fractal dimensions, i.e. generalised dimensions (D_q) and the number of events i.e. 100 is large enough to provide the reliable estimate of fractal dimensions. The correlation integral is calculated using Eq. (2) for the epicentral distribution X_i of the subset. The distance r between subset is calculated by using spherical triangle (Bullen and Bolt, 1985; Hirata, 1989). For

¹<http://neic.usgs.gov/mneis/epic>

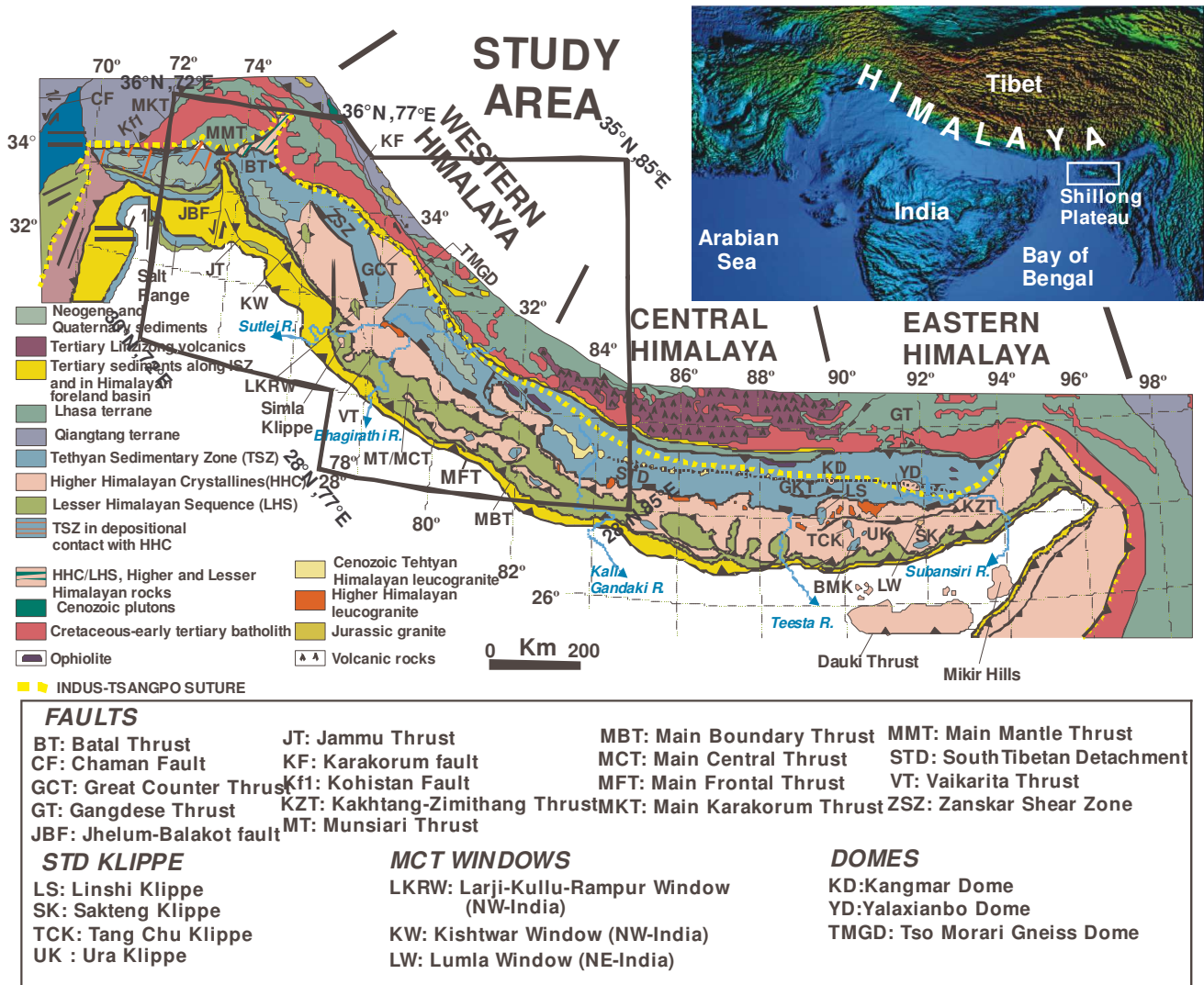


Fig. 1. The tectonic map (modified from Yin, 2006; Yin et al., 2010) and study area shown in grid.

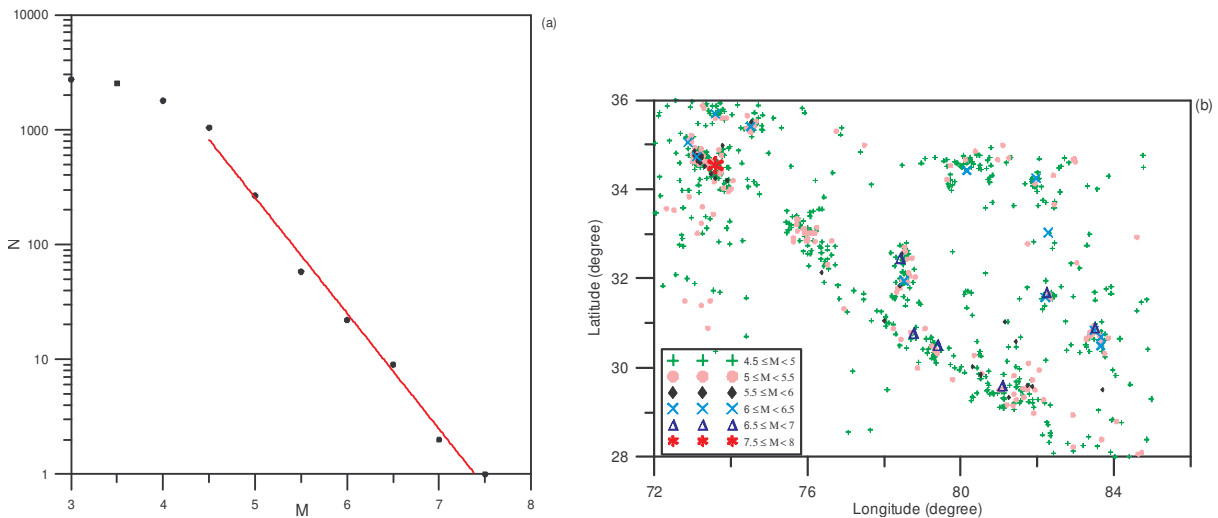


Fig. 2. (a) Frequency magnitude plot for USGS data during period from 1973 to 2009 for selected region; (b) seismicity of the selected region for $m_b \geq 4.5$.

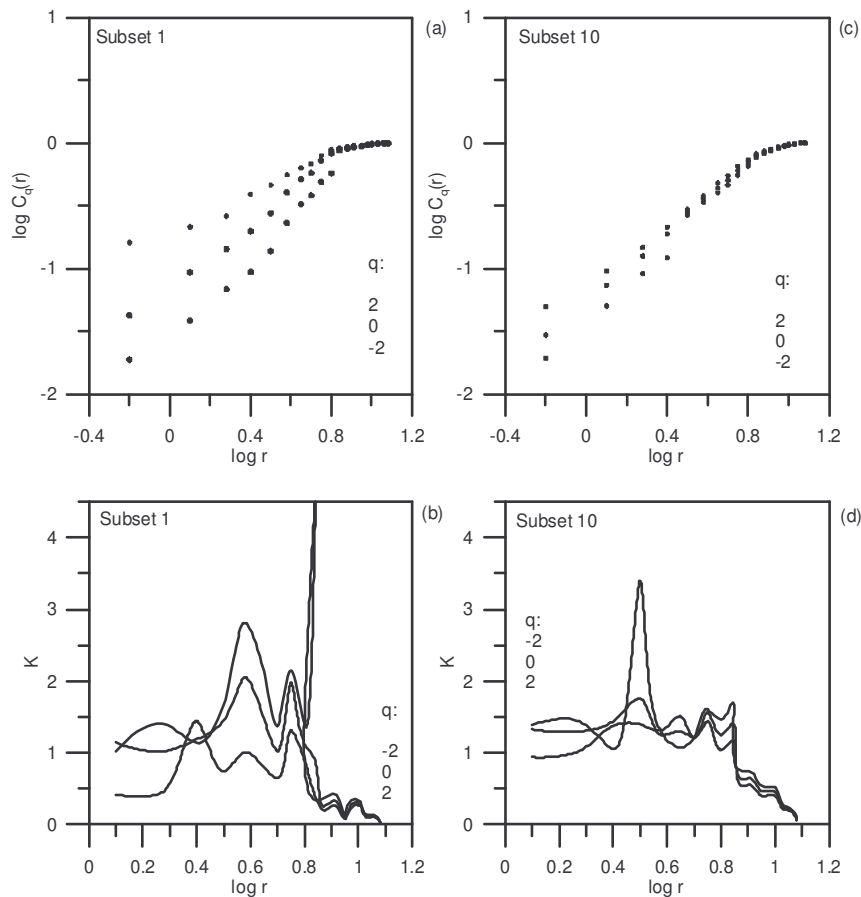


Fig. 3. (a) $\log C_q(r)$ vs. $\log r$ for $q = 2, -2$ for subset S1; (b) $\log C_q(r)$ vs. $\log r$ for $q = 2, -2$ for subset S10; (c) K vs. $\log r$ for subset S1; (d) K vs. $\log r$ for subset S10.

epicentral distribution having a fractal structure, the following power law relationship is obtained in the scaling region $C_q(r) \sim r^{D_q}$.

An appropriate scaling region has been estimated before the computation of generalised dimension D_q . For this we have used Li et al. (1994) method to determine the scaling region in the western Himalaya. Three point curves for $q = -2.0, 0.0, 2.0$ estimated in selected region for two different subsets i.e. subsets 1 and 10 are shown in Fig. 3a and b. There may be more linear segments in each curve. It is known that slopes of adjacent points in the graph will be constant when these points lie on a linear segment. The graph of $\log r$ vs. K for two subsets is shown in Fig. 3c and d. K is the slope of adjacent points of the graph of $\log r$ vs. $\log C_q(r)$. The scaling region has been selected for the range in r for which the variation in K slope is minimum for all three values of q . The scaling region has been found to be consistent irrespective of subsets. Based on this method K have been found to be minimum for range of $\log r$ (from -2.0 to 0.7) i.e. first seven points in $\log C_q(r)$ vs. $\log r$ plot for all three values of q . The generalised dimensions for all

27 subsets have been estimated by least square fit from first seven points (Table 1). The errors shown in Table 1 of fractal dimensions variation in best fit line in different subsets will be reflected in least square errors.

The b -value in the Gutenberg-Richter relation ($\log N(m > M) = a - bM$, where M is the magnitude and $N(m > M)$ is the number of events of magnitude larger than M) was estimated for $\{M_i\}_{i=1+30j}^{100+30j}$ of 27 subsets generated from the original data set by changing j from 0 to 26. Magnitude distribution obeys the Gutenberg-Richter relation, the b -value may be estimated by the maximum likelihood method, which gives better estimation of the b -value than the least square method (Utsu, 1965; Aki, 1965). When the number of events exceeds about 50, the maximum likelihood method provides us a stable estimation of b -value (Utsu, 1965). The number of events in each subset, $N = 100$ is also large enough to provide reliable estimates of b -value using maximum likelihood method (Utsu, 1965). The uncertainty is estimated by (Aki, 1965) which is given by $\sigma_b = b/\sqrt{N}$, where N is number of earthquakes in the subset. The 95% confidence error in the b -values is 0.08 in our estimated b -values of 27 subsets.

Table 1. Showing the subsets description along with time periods and fractal dimension.

Sr. no.	Subset name	Subset event	Time period (years)	D_{-2}	D_2	$M \geq 7.0$ (No. of events)
1.	S1	1–100	1972.044–1976.137	1.4790 ± 0.0207 (s.d)	0.7429 ± 0.0067 (s.d)	–
2.	S2	31–130	1974.052–1977.745	1.5459 ± 0.0269 (s.d)	0.8087 ± 0.0080 (s.d)	–
3.	S3	61–160	1974.556–1979.645	1.7412 ± 0.0385 (s.d)	0.9738 ± 0.0094 (s.d)	–
4.	S4	91–190	1975.688–1980.863	1.7830 ± 0.0876 (s.d)	1.0728 ± 0.0110 (s.d)	–
5.	S5	121–220	1977.323–1982.784	1.8278 ± 0.1242 (s.d)	1.0081 ± 0.0095 (s.d)	–
6.	S6	151–250	1979.525–1983.992	1.7651 ± 0.0389 (s.d)	0.9824 ± 0.0089 (s.d)	–
7.	S7	181–280	1980.701–1985.573	1.7062 ± 0.0187 (s.d)	1.0439 ± 0.0168 (s.d)	–
8.	S8	211–310	1981.956–1987.921	1.5712 ± 0.0038 (s.d)	1.1610 ± 0.0054 (s.d)	–
9.	S9	241–340	1983.708–1990.403	1.5898 ± 0.1266 (s.d)	1.1835 ± 0.0039 (s.d)	–
10.	S10	271–370	1985.162–1991.648	1.7108 ± 0.0516 (s.d)	1.0779 ± 0.0059 (s.d)	–
11.	S11	301–400	1987.063–1993.586	1.6417 ± 0.0511 (s.d)	1.1652 ± 0.0045 (s.d)	–
12.	S12	331–430	1990.036–1996.014	1.6507 ± 0.0555 (s.d)	1.1636 ± 0.0046 (s.d)	–
13.	S13	361–460	1991.309–1998.326	1.6790 ± 0.0219 (s.d)	1.0593 ± 0.0053 (s.d)	–
14.	S14	391–490	1992.545–2000.096	1.7828 ± 0.0712 (s.d)	1.1022 ± 0.0029 (s.d)	–
15.	S15	421–520	1995.544–2001.759	1.7543 ± 0.0373 (s.d)	1.0950 ± 0.0028 (s.d)	–
16.	S16	451–550	1998.247–2002.170	1.6841 ± 0.0221 (s.d)	0.8221 ± 0.0095 (s.d)	–
17.	S17	481–580	1999.544–2003.833	1.6731 ± 0.0484 (s.d)	0.6972 ± 0.0031 (s.d)	–
18.	S18	511–610	2001.145–2004.773	1.6513 ± 0.0716 (s.d)	0.5766 ± 0.0018 (s.d)	–
19.	S19	541–640	2001.863–2004.773	1.5511 ± 0.1167 (s.d)	0.4192 ± 0.0018 (s.d)	–
20.	S20	571–670	2003.527–2004.773	1.2007 ± 0.0298 (s.d)	0.1505 ± 0.0002 (s.d)	–
21.	S21	601–700	2004.773–2004.773	0.0142 ± 0.0000 (s.d)	0.0111 ± 0.0000 (s.d)	1
22.	S22	631–730	2004.773–2004.775	0.1539 ± 0.0056 (s.d)	0.0371 ± 0.0003 (s.d)	1
24.	S24	691–790	2004.773–2004.970	0.8422 ± 0.0707 (s.d)	0.1121 ± 0.0020 (s.d)	1
25.	S25	721–820	2004.775–2006.049	1.3293 ± 0.0491 (s.d)	0.1622 ± 0.0010 (s.d)	–
26.	S26	751–850	2004.792–2007.188	1.6297 ± 0.1409 (s.d)	0.3845 ± 0.0009 (s.d)	–
27.	S27	781–880	2004.890–2007.902	1.6696 ± 0.1675 (s.d)	0.6576 ± 0.0081 (s.d)	–

3 Results and discussion

Observation of seismicity suggests a relationship between the distribution of earthquake magnitudes and the distribution of earthquake epicenters (Hirata, 1989; Henderson et al., 1994). The fractal dimension D_2 and D_{-2} for all 27 subsets are shown in Table 1. Figure 4 shows the spatio-temporal variation of generalised fractal dimension D_q ($q = 2, -2$) along with b -values in all 27 subsets analysed in the study.

It is evident that there is a significant increase in clustering prior to occurrence of Muzaffrabad-Kashmir earthquake. The same is evident in $D_q - q$ spectra. The flat $D_q - q$ spectra in subset 21 shows the convergence of epicenters to a point i.e. confinement of seismicity in the zone of preparation of large size Muzaffrabad-Kashmir earthquake ($M_w = 7.6$) leading to very small values of generalised dimension. Subset 21 includes very few epicenters of aftershock events of Muzaffrabad-Kashmir earthquake of 8 October 2005. The steep slope in D_q spectra also gives better indication for preparation zone for large size earthquake in the Himalayan region which is considered to be store house of elastic energy and have potential to generate moderate, large size and great size earthquakes. The same has been observed for the

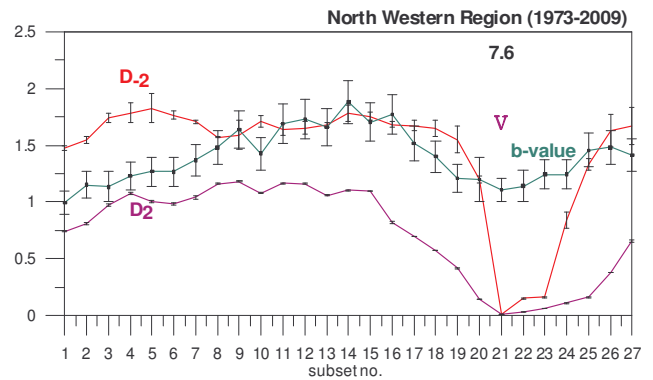


Fig. 4. The temporal variation of generalised dimension D_q ($q = 2, -2$) along with the temporal variation of b -value. The D_q ($q = 2, -2$) and b -values are shown with error bars.

North-Western Himalaya region which shows the steep slope in D_q spectra from subset S15 (1995.544–2001.759) to subset S20 (2003.527–2004.773) prior to occurrence of large size ($M_w = 7.6$) Muzaffrabad-Kashmir earthquake which belong to subset S21 (see Fig. 5). Steep slope in $D_q - q$ spectra

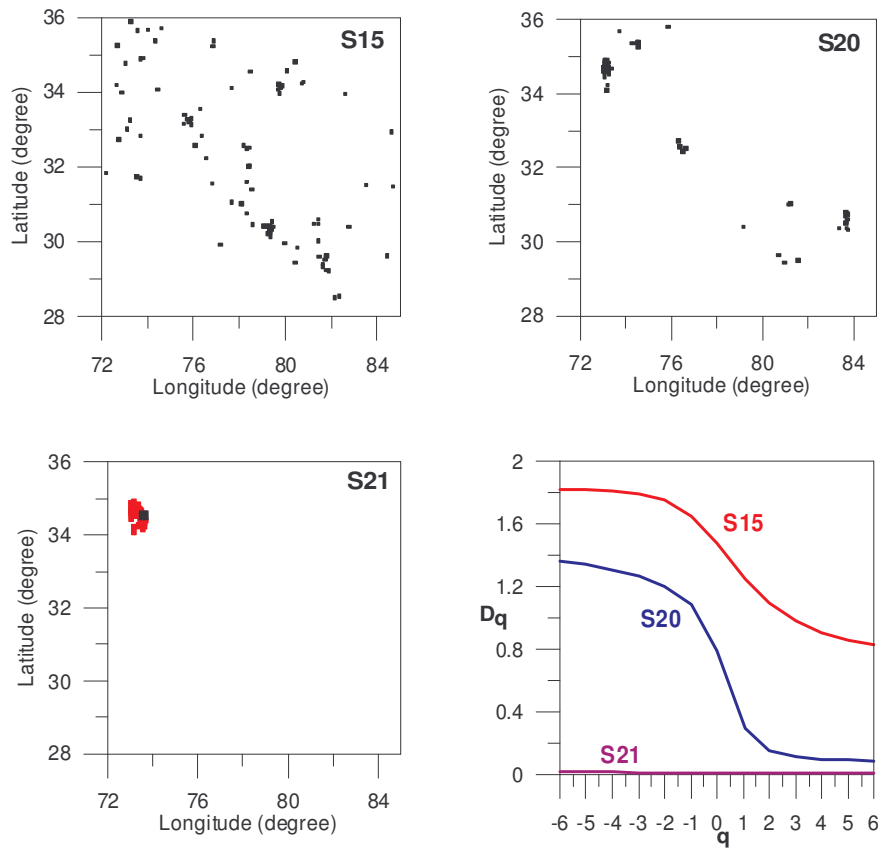


Fig. 5. The seismicity of subsets S15, S20 and S21. The Muzaffrabad-Kashmir earthquake of October 2005 lies in subset S21. The corresponding $D_q - q$ spectra of these subsets are also shown.

relates to clustering in the zone of preparation or nucleation. Therefore, in the regions having zone of preparation for large size earthquake events $M > 7$, the completeness of earthquake catalogue for $m_b \geq 4.5$ may give substantial indication in $D_q - q$ spectra as is found in this study and also in other studies of the Himalayan and Sumatra region (Teotia et al., 1997; Teotia and Kumar, 2007; Sunmonu et al., 2001).

The b -value varies from $0.94 \pm .09$ to $1.8 \pm .18$ in the subsets (S1–S27) for the time period 1973–2009 in the region. The consistent and significant decreases in D_q and b -value have been observed prior to occurrence of Muzaffrabad-Kashmir earthquake. We note that the changes in b -values as well as D_2 starts from subset S15 (1995.544–2001.759) with lowest value in subset S21 (2004.773–2004.773). The Muzaffrabad-Kashmir large size earthquake lies in subset 21. The decrease in correlation dimension D_c is also reported prior to Muzaffrabad earthquake (Roy and Mandal, 2009) however the completeness of data is not carried out in their study which used merged catalogue of microseismic data of Wadia Institute of the Himalaya Geology and USGS catalogue. Therefore, the decrease in correlation dimension in study by Roy and Mandal (2009) may not entirely be associated with intrinsic nature of seismicity in the

region. However, in our study the completeness of USGS catalogue is ascertained, therefore, the decrease in generalised dimension D_q and b -value may be completely associated with the intrinsic nature of seismicity of the northwestern Himalaya.

The consistent decrease in spatial dimension (D_s) may correspond to introduction of clustering of seismicity in the region shows the region preparedness for the occurrence of major size events (De Rubeis et al., 1993). De Rubeis et al. (1993) have also found the temporal evolution for three seismic zones of Italy by means of the correlation integral fractal method and the decrease in fractal dimension prior of occurrence of major events also supports the results in our study. The decrease in the fractal dimension with the evolution of rock fracture was also reported by Hirata et al. (1987). These studies and our study for the Himalayan region show similar behaviour in spatio-temporal variation of fractal dimension as the seismicity in the region evolves from extended distribution of epicenters to clustered distribution and again back to distributed seismicity. This is evident from the decrease in D_q from subset 15 to subset 21 and increase in D_q from subset 21 to subset 27 (see Fig. 4). De Rubeis et al. (1993) have also found the same pattern of distributed

seismicity and increase in fractal dimension D_s from the minimum value during the major sequence, indicating the tendency of seismic activity to spread in space. Therefore, the spatio-temporal evolution of seismicity can be best understood in the framework of self-organised criticality. The concept of Self-Organised Criticality (SOC) can be applied to distribution of seismicity (Bak and Tang, 1988, 1989). The definition of Self-Organised criticality is that a natural system is in a marginally stable state when perturbed from this state, will evolve back to the state of marginal stability. A simple Cellular-automata model illustrates self-organised criticality. The results in this study supports the evolution of epicenters distribution from a random spatial distribution to an organised fractal structure as is given in modified SOC model (Ito and Matsuzaki, 1990). Thus the application of nonlinear geophysics (NG) methods is important for extreme phenomena and new hazard assessment techniques (Rundle et al., 2003).

4 Conclusions

The seismicity data of studied region show multifractal behaviour. Multifractal analysis of seismicity data holds promise in understanding the zone of preparation which may result in damaging earthquakes. The spatio-temporal variation of D_q and $D_q - q$ spectra provides some lessons to learn from nature. This study supports the use of spatio-temporal variation of D_q at small q (i.e. $q = -2, 2$) to detect the seismicity change in regional area. The steep slope in $D_q - q$ spectra is detected before the occurrence of Muzaffrabad-Kashmir earthquake ($M_w = 7.6$) of 8 October 2005. However, the steep slope of D_q spectra may not necessarily be due to increase in D_q for negative value of q and decrease in D_q for positive values of q when compared from one subset to consecutive subset in case seismicity is converging to very localise distribution, i.e. from randomised extended distribution to self-organised clustered distribution of epicenters. The changes in D_q are consistent with the tectonics of the region which evolves from plane filling of epicenters to line filling of epicenters, i.e. large size/great size earthquake occurrence along Main Central Thrust (MCT) in the Himalaya region. The same has been observed in this study which shows significant decrease in generalised dimension, i.e. D_2 and D_{-2} as seismicity evolves from plane filling distribution to line filling distribution. Our study supports the spatio-temporal variation of b -value, D_q and D_q spectra for assessing the zone of preparation for different size earthquakes. The completeness for lower magnitude threshold by ensuring better monitoring and location capabilities in the Himalaya region may help in further constraining the results and will provide better understanding of zone of preparation for major, large and great size earthquake.

Acknowledgements. The authors are thankful to American Geophysical Union 2010 organizers who gave us opportunity to present this work at AGU 2010, NGRI, Hyderabad. The authors also would like to acknowledge the fruitful suggestions given by reviewers and editors.

Edited by: V. P. Dimri

Reviewed by: two anonymous referees

References

- Aki, K.: Maximum likelihood estimate of b in the formula $\log(N) = a - bM$ and its confidence limits, *Bull. Earthq. Res. Inst. Tokyo Univ.*, 43, 237–239, 1965.
- Aki, K.: A probabilistic synthesis of precursory phenomena, in earthquake prediction, in: *An International Rev.*, M. Ewing series 4, edited by: Simpson, D. W. and Richard, P. G., Am. Geophys. Union, Washington D.C., 566–574, 1981.
- Allègre, C. J., Le Mouél, J. L., and Provost, A.: Scaling rules in rock failure and possible implications for earthquake prediction, *Nature*, 297, 47–49, doi:10.1038/297047a0, 1982.
- Baddi, R. and Broggi, G.: Measurement of the dimension spectrum $f(\alpha)$: Fixed-mass approach, *Phys. Lett. A.*, 131, 339–343, doi:10.1016/0375-9601(88)90784-0, 1988.
- Bak, P. and Tang, C.: Self-Organized Criticality, *Phys. Rev. A*, 38, 364–371, doi:10.1103/PhysRevA.38.364, 1988.
- Bak, P. and Tang, C.: Earthquakes as a self-organised criticality phenomenon, *J. Geophys. Res.*, 94(B11), 15635–15637, 1989.
- Brown, S. R. and Scholz, C. H.: Broadband width with study of the topography of the natural surfaces, *J. Geophys. Res.*, 90, 12575–12582, 1985.
- Bullen, K. E. and Bolt, B. A.: *An introduction to theory of seismology*, Cambridge university press, New York, 1985.
- De Rubeis, V., Dimitriu, P. P., Papadimitriou, E., and Tosi, P.: Recurrence Patterns in the Spatial behaviour of Italian Seismicity revealed by the fractal approach, *Geophys. Res. Lett.*, 20(18), 1911–1914, doi:10.1029/93GL01889, 1993.
- Dimitriu, P. P., Scordilis, E. M., and Karacostas, V. G.: Multifractal Analysis of the Arnea, Greece Seismicity with Potential Implications for Earthquake Prediction, *Nat. Hazards*, 21, 277–295, 2000.
- Grassberger, P. and Procraccia, I.: Measuring the strangeness of strange attractors, *Physica D*, 9, 189–208, doi:10.1016/0167-2789(83)90298-1, 1983.
- Greenside, H. S., Wolf, A., Swift, J., and Pignataro, T.: Impracticality of Box-counting algorithm for calculating the Dimensionality of strange attractors, *Phys. Rev. A*, 25, 3453–3459, doi:10.1103/PhysRevA.25.3453, 1982.
- Grassberger, P., Baddi, R., and Politi, A.: Scaling Laws for Invariant Measures on Hyperbolic attractors, *J. Stat. Phys.*, 51, 135–178, doi:10.1007/BF01015324, 1988.
- Halsey, T. C., Jensen, M. H., Kadanoff, L. P., Procraccia, I., and Shraiman, B. I.: Fractal Measures and Their Singularities: the Characterizations of strange sets, *Phys. Rev. A*, 33, 1141–1151, 1986.
- Henderson, J., Main, I. G., Pearce, R. G., and Takeya, M.: Seismicity in north-eastern Brazil: Fractal clustering and the evaluation of b value, *Geophys. J. Int.*, 116, 217–226, doi:10.1111/j.1365-246X.1994.tb02138.x, 1994.

- Hentschel, H. G. E. and Procraccia, I.: The infinite number of Generalized Dimensions of Fractals and strange attractor, *Physica D*, 8, 435–444, doi:10.1016/0167-2789(83)90235-X, 1983.
- Hirabayashi, T., Ito, K., and Yoshii, T.: Multifractal analysis of earthquakes, *Pure Appl. Geophys.*, 138, 561–610, doi:10.1007/BF00876340, 1992.
- Hirata, T.: Omori's power law aftershock sequences of microfracturing in rock fracture experiment, *J. Geophys. Res.*, 92(B7), 6215–6221, 1987.
- Hirata, T.: A correlation between the b value and the fractal dimension of earthquakes, *J. Geophys. Res.*, 94(B6), 7507–7514, 1989.
- Hirata, T. and Imoto, M.: Multifractal analysis of spatial distribution of micro earthquakes in the Kanto region, *Geophys. J. Int.*, 107, 155–162, doi:10.1111/j.1365-246X.1991.tb01163.x, 1991.
- Ito, K. and Matsuzaki, M.: Earthquakes as self-organized critical phenomena, *J. Geophys. Res.*, 95(B5), 6853–6860, 1990.
- Li, D., Zhaobi, Z., and Binghong, W.: Research into the multifractal of earthquake spatial distribution, *Tectonophysics*, 223, 91–97, doi:10.1016/0040-1951(94)90222-4, 1994.
- Mandelbrot, B. B.: Multifractal measures, especially for Geophysicist, *Pure Appl. Geophys.*, 131, 5–42, doi:10.1007/BF00874478, 1989.
- Roy, P. N. S. and Mandal, S. K.: Fractal Nature of Earthquake Occurrence in Northwest Himalayan Region, *J. Ind. Geophys. Union*, 13(2), 63–68, 2009.
- Rundle, J. B., Turcotte, D. L., Shcherbakov, R., Klein, W., and Sammis, C.: Statistical physics approach to understanding the multi-scale dynamics of earthquake fault system, *Rev. Geophys.*, 41(4), 1019, doi:10.1029/2003RG000135, 2003.
- Scholz, C. H. and Aviles, C. A.: The fractal geometry of faults and faulting, in: *Source Mechanics*, edited by: Das, S., Boatwright, J., and Scholz, C., *Geophys. Mongr. Ser.*, 37, 147–155, 1986.
- Stanley, H. E. and Meakin, P.: Multifractal phenomena in Physics and Chemistry, *Nature*, 335, 405–409, doi:10.1038/335405a0, 1988.
- Sunmonu, L. A., Dimri, V. P., Ravi Prakash, M., and Bansal, A. R.: Multifractal approach of the time series of $M > 7$ earthquakes in Himalayan region and its vicinity during 1985–1995, *JGSI*, 58, 163–169, 2001.
- Telesca, L., Lapenna, V., and Macchiato, M.: Investigating the time-clustering properties in seismicity of Umbria-Marche region (Central Italy), *Chaos Soliton. Fract.*, 18(2), 202–217, doi:10.1016/S0960-0779(02)00654-9, 2003a.
- Telesca, L., Lapenna, V., and Macchiato, M.: Spatial variability of the time-correlated behavior in Italian Seismicity, *Earth Planet. Sc. Lett.*, 212(3–4), 279–290, doi:10.1016/S0012-821X(03)00286-3, 2003b.
- Telesca, L., Cumo, V., Lapenna, V., and Macchiato, M.: Detrended fluctuation analysis of the spatial variability of the temporal distribution of southern California seismicity, *Chaos Soliton. Fract.*, 21(2), 335–342, doi:10.1016/j.chaos.2003.10.021, 2004.
- Telesca, L., Lapenna, V., and Macchiato, M.: Multifractal fluctuations in seismic interspike series, *Physica A*, 354, 629–640, doi:10.1016/j.physa.2005.02.053, 2005.
- Teotia, S. S.: Multifractal analysis of earthquakes: An overview, edited by: Dimri, V. P., Oxford 7 IBH publishing Co. Pvt. Ltd. New Delhi, 161–170, 2000.
- Teotia, S. S. and Kumar, D.: The great Sumatra-Andaman earthquake of 26 December 2004 was predictable even from seismicity data of $m_b \geq 4.5$: A lesson to learn from nature, *Indian J. Mar. Sci.*, 36, 122–127, 2007.
- Teotia, S. S., Khattri, K. N., and Roy, P. K.: Multifractal analysis of seismicity of the Himalayan region, *Current Science*, 73, 359–366, 1997.
- Turcotte, D. L.: A model of crustal deformation, *Tectonophysics*, 132, 261–269, doi:10.1016/0040-1951(86)90036-3, 1986a.
- Turcotte, D. L.: Fractals and fragmentation, *J. Geophys. Res.*, 91(B2), 1921–1926, 1986b.
- Utsu, T.: A method of determining the value of b in a formula $\log n = a - bM$ showing the magnitude-frequency relation for earthquakes, *Geophys. Bull. Hokkaido Univ.*, 13, 99–103, 1965 (in Japanese).
- Yin, A.: Cenozoic tectonic evolution of the Himalayan orogeny as constrained by along-strike variation of structural geometry, exhumation history, and foreland sedimentation, *Earth Sci. Rev.*, 76, 1–131, doi:10.1016/j.earscirev.2005.05.004, 2006.
- Yin, A., Dubey, C. S., Kelty, T. K., Webb, A. A. G., Harrison, T. M., Chou, C. Y., and C el erier, J.: Geologic correlation of the Himalayan orogeny and Indian craton: Part 2. Structural geology, geochronology, and tectonic evolution of the Eastern Himalaya, *Bull. Geol. Soc. Am.*, 122, 360–395 doi:10.1130/B26461.1, 2010.